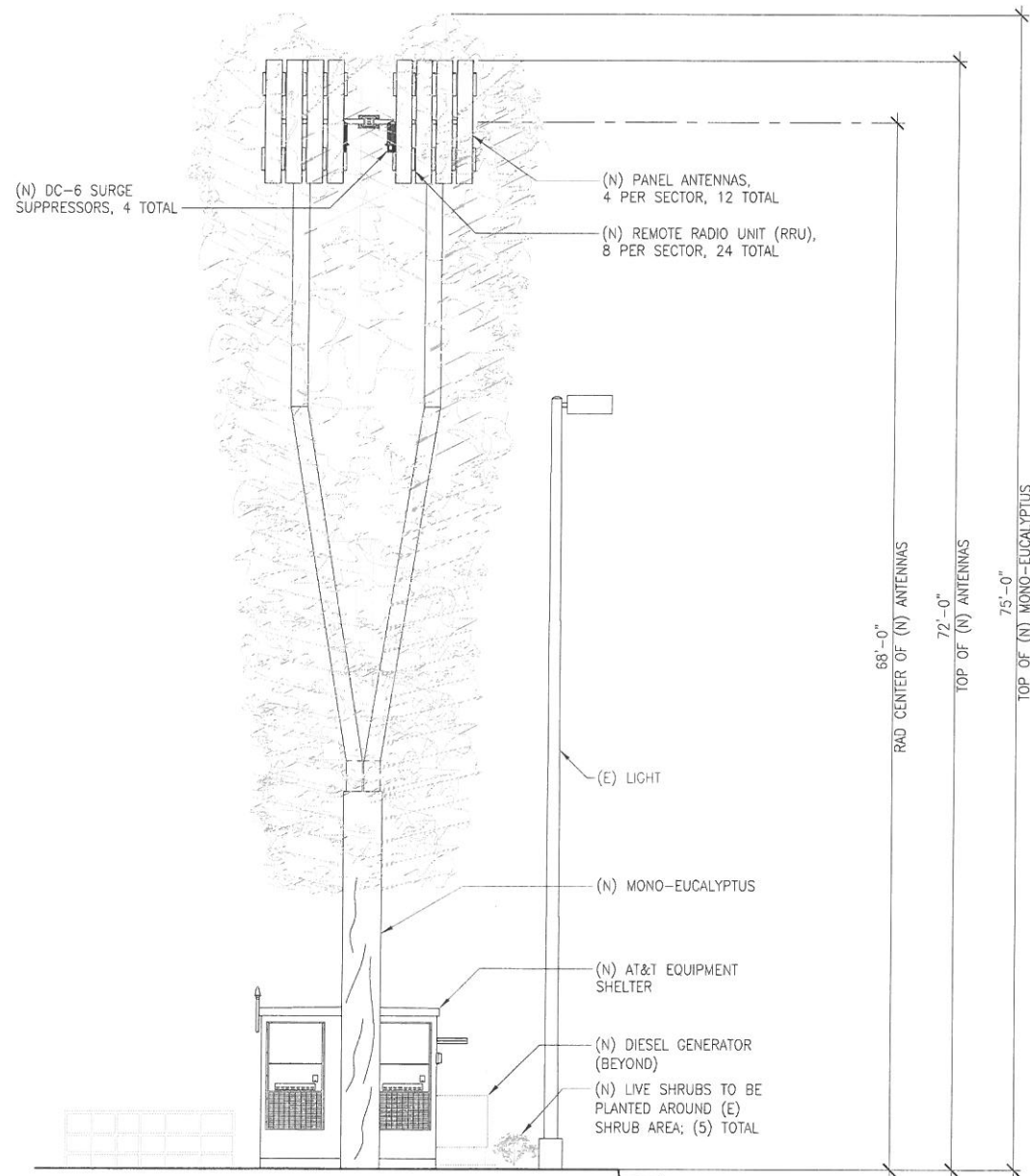


COPYRIGHT: BECHTEL INFRASTRUCTURE AND POWER CORPORATION 2015. THIS ITEM CONTAINS CONFIDENTIAL INFORMATION PROPRIETARY TO BECHTEL INFRASTRUCTURE AND POWER CORPORATION THAT IS NOT TO BE USED, DISCLOSED, OR REPRODUCED IN ANY FORMAT BY ANY NON-BECHTEL PARTY WITHOUT BECHTEL'S PRIOR WRITTEN PERMISSION. NOTWITHSTANDING THE ABOVE, "AT&T MOBILITY" HAS THE RIGHT TO USE THE INFORMATION CONTAINED IN THIS DOCUMENT PURSUANT TO CONTRACT 25736 BETWEEN BECHTEL INFRASTRUCTURE AND POWER CORPORATION AND "AT&T MOBILITY". ALL RIGHTS RESERVED.



EAST ELEVATION

SCALE: 3/16"=1'-0"



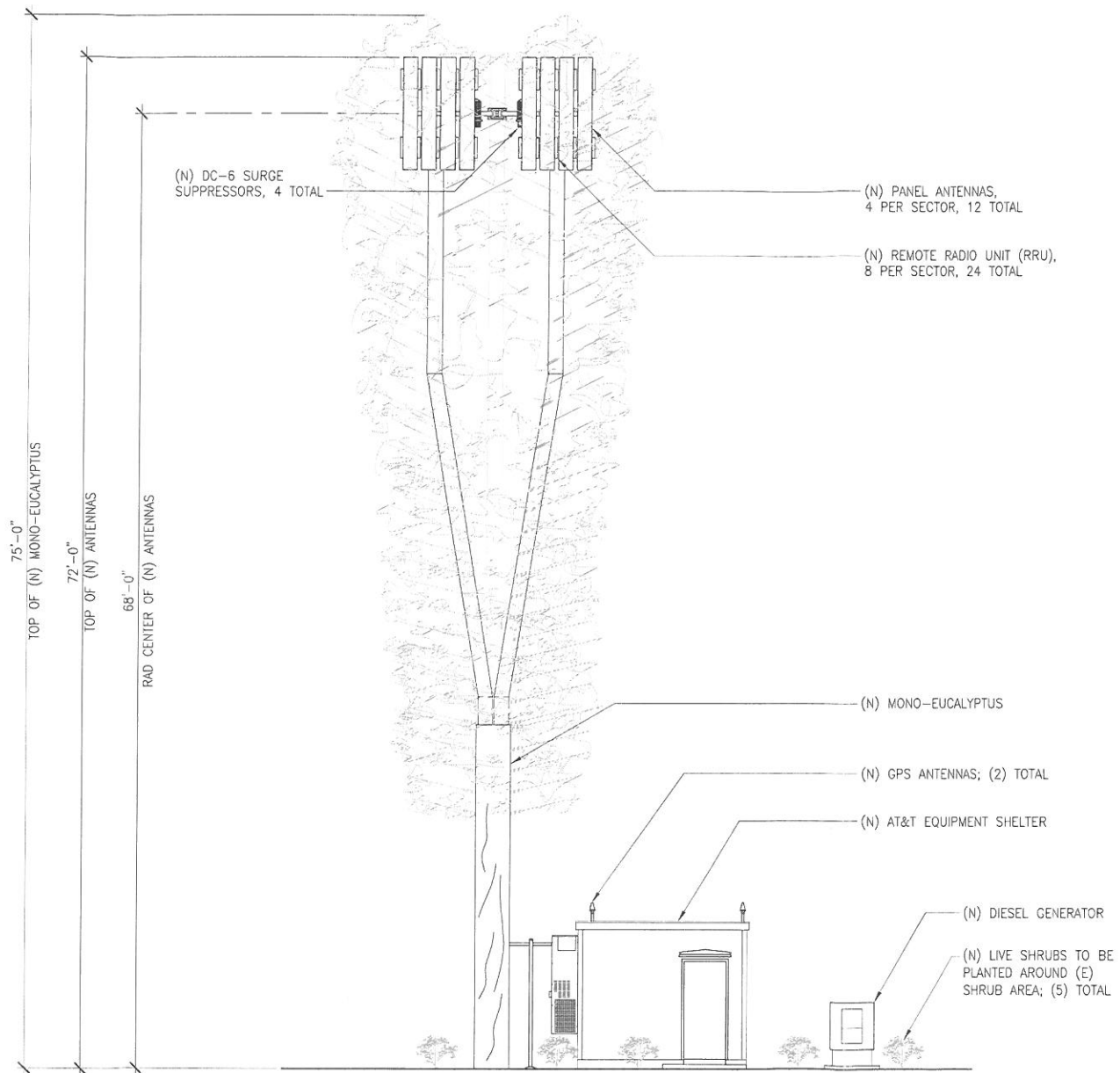
2

DCI PACIFIC
A|E|C WORKS

ARCHITECTURE | ENGINEERING | CONSULTING
32 EXECUTIVE PARK | SUITE 110
IRVINE | CA 92614

LESTER WATER TREATMENT
RS0310

2970 RIMPAU AVE
CORONA, CA 92881



NORTH ELEVATION

SCALE: 3/16"=1'-0"



1



1452 EDINGER AVENUE, 3RD FLOOR
TUSTIN, CA 92780

3	06/01/18	PLANNING COMMENTS AND TELCO UPDATE	BY	BOK	DKD
2	02/19/18	INCORPORATED PHOTO-SIMS	HT	BOK	DKD
1	12/19/17	PLANNING COMMENTS	JY	BOK	DKD
0	11/07/17	ISSUED FOR ZONING PERMIT	MG	BOK	DKD
A	10/12/17	ISSUED FOR ZD REVIEW AND COMMENTS	MG	BOK	DKD
NO.	DATE	REVISIONS	BY	CHK	APP'D
SCALE	AS SHOWN	DESIGNED			DRAWN



ELEVATIONS

25736-615	DRAWING NUMBER	REV.
AA-RS0310-Z03		3