



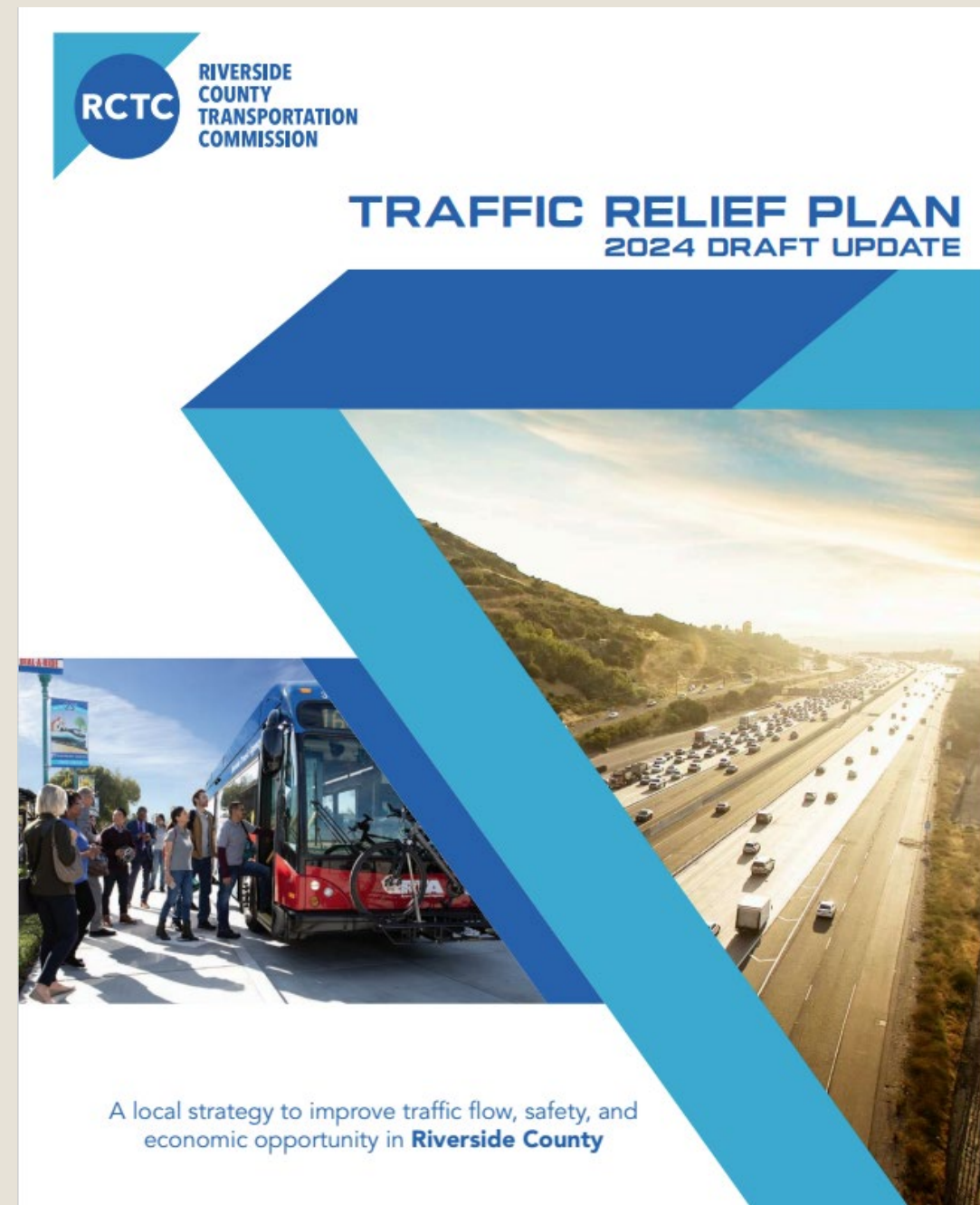
RCTC Traffic Relief Plan

City Council Meeting: February 7, 2024

Savat Khamphou – Public Works Director

The Why...

To update the City Council on the proposed RCTC Traffic Relief Plan and the 1% sales tax ballot measure.



What is the Traffic Relief Plan?

- Transportation products and services that meet the needs of Riverside County
- Cost/funding Model Plan for a potential ballot measure
- Built based upon extensive public outreach and engagement
- First approved in May 2020 without a funding mechanism and has been updated for 2024

What is heard from the community?

- Improve freeway traffic flow
- Improve traffic flow and safety on major roads
- Improve condition of existing roads
- Sidewalk and safety improvements for pedestrians and cyclists
- Increase frequency in public transportation
- Bring daily passenger rail service to the Coachella Valley
- Connect Riverside County by accelerating important projects
- Provide more independence and opportunity
- Utilize new technologies to improve efficiency and safety

Funding and Investment Regions

Palo Verde Valley (Blythe)

- Funds stay within the region
- Investment priorities are decided by Blythe and County

Coachella Valley

- CVAG manages the funds
- Investment priorities are determined using the Transportation Project Prioritization Study (TPPS)

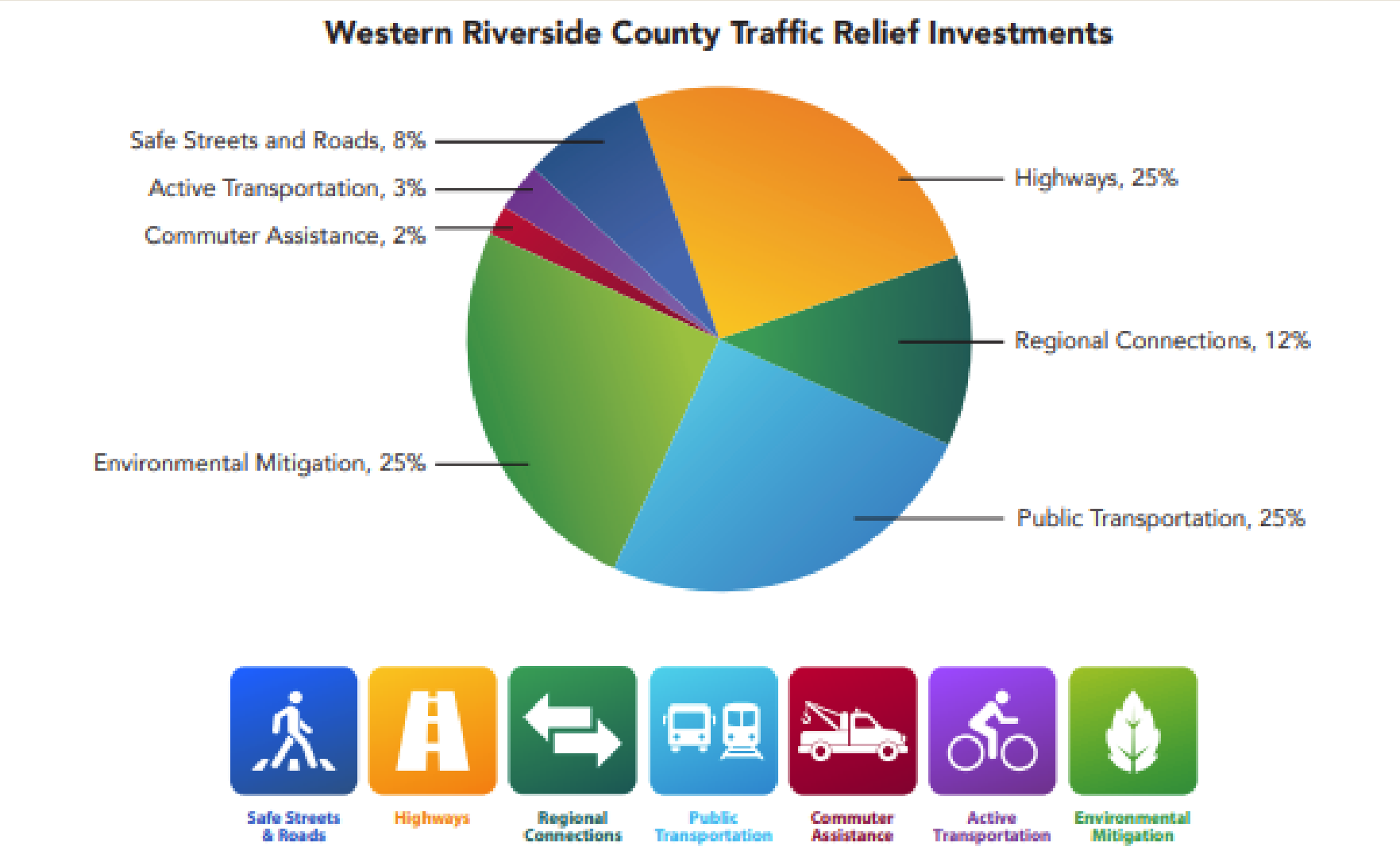
Western Riverside County

- Riverside and Corona areas, Moreno Valley and Perris areas, Hemet-San Jacinto Valley, San Gorgonio Pass, and Temecula-Murrieta-Lake Elsinore areas
- Percentage based upon % allocation
- Funds managed by RCTC

Category or Investment Types



Proposed Funding Allocation by Category



Safe Streets and Roads

New/Proposed 2024 Draft Traffic Relief Plan (1% sales tax)

- 4% given directly to cities based on formula (population)
 - \$1.7 million estimated, annually to City of Corona
- 4% for regional roads/major arterials distributed by RCTC
- Plan will fund highway projects, including toll roads

Current Measure A (half-cent sales tax, sunsets in 2039)

- 29% given directly to cities based upon formula (population)
 - Approximately \$6 million annually to City of Corona
- 9% for regional roads/major arterials distributed by RCTC
 - Received almost \$8 million for Ontario Avenue Widening at I-15
 - Competitive Process



Safe Streets & Roads

Proposed Funding Allocation

Category	Current Proposal	City of Riverside Revised Proposal
Safe Streets and Roads	8%	20% (with direct allocation to cities)
Highway	25%	25% (no change)
Public Transportation	25%	20%
Regional Connections	12%	12% (no change)
Commuter Assistance	2%	0% (include in Highway category)
Active Transportation	3%	3% (with direct allocation to cities)
Environmental Mitigation	25%	20%

RCTC Proposed Sales Tax Ballot Measure

- 1% sales tax for Riverside County (requires over 2/3 majority vote)
- 30 - year planning horizon
- \$25 billion in revenue estimates over 30 years
 - \$20 billion in Western Riverside County
 - \$5 billion in Coachella Valley
 - \$0.1 billion (\$100 Million) in Palo Verde Valley
- \$26.5 billion in needs consisting of projects, operations, and maintenance costs for the Western Riverside County areas
 - Other local, State, and federal funds will be needed
- 2024 Timeline:
 - March – RCTC representative to present to the City Council
 - April – RCTC to vote on the 2024 Traffic Relief Plan
 - June – RCTC to vote on putting 1% sales tax measure on the November ballot
 - November – Voting of the measure (if approved in June)

Options to Consider

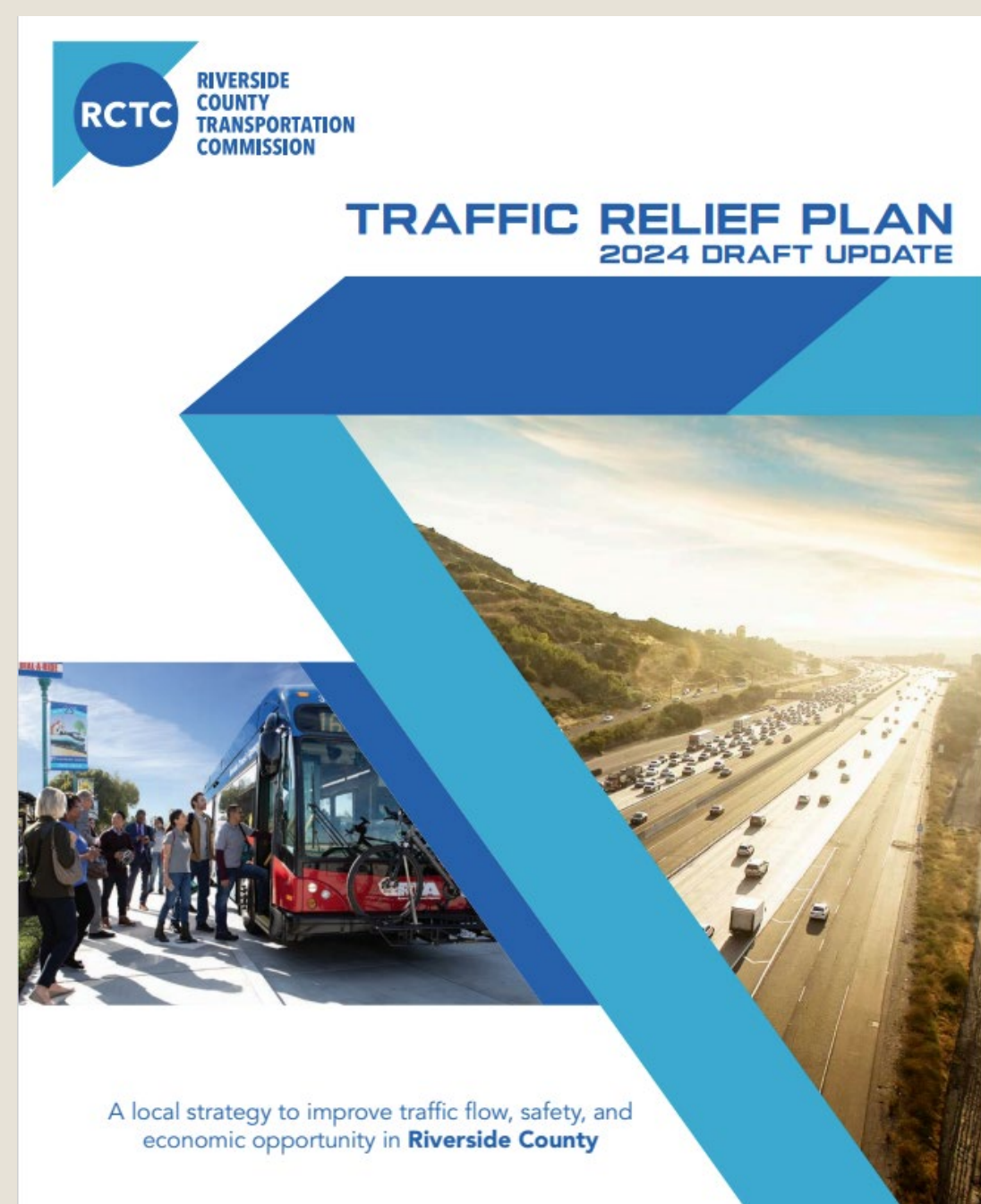
- When receiving presentation from RCTC, have the following options in mind:
 1. Support the TRP and funding plan
 2. Support the TRP and funding plan, but with amendments
 3. Oppose the TRP and funding plan
 4. Stay neutral

Next Steps

- March 6: Receive presentation from RCTC
- March 20: City Council to discuss position on TRP and funding plan
 - Give direction to Council RCTC representative and/or staff
- Corona advocates its proposed direction (if necessary)

The Why...

To update the City Council on the proposed RCTC Traffic Relief Plan and the 1% sales tax ballot measure.



Thank you.

