

LOS ARCOS PLAZA

SIGN#1
D/F ILLUMINATED
PYLON SIGN

SIGN#3
55' PLYON SIGN;
L-SHAPED

SIGN#2
D/F ILLUMINATED
"V-SHAPED"
DIRECTIONAL SIGN

SIGN#4
S/F ILLUMINATED
MONUMENT SIGN



NEW DEVELOPMENT RENDER; NTS

EXISTING RETAIL CENTER
REPOSITIONING;
MCKINLEY ST & SAMPSON AVE
CORONA, CA



VICINITY MAP; NTS

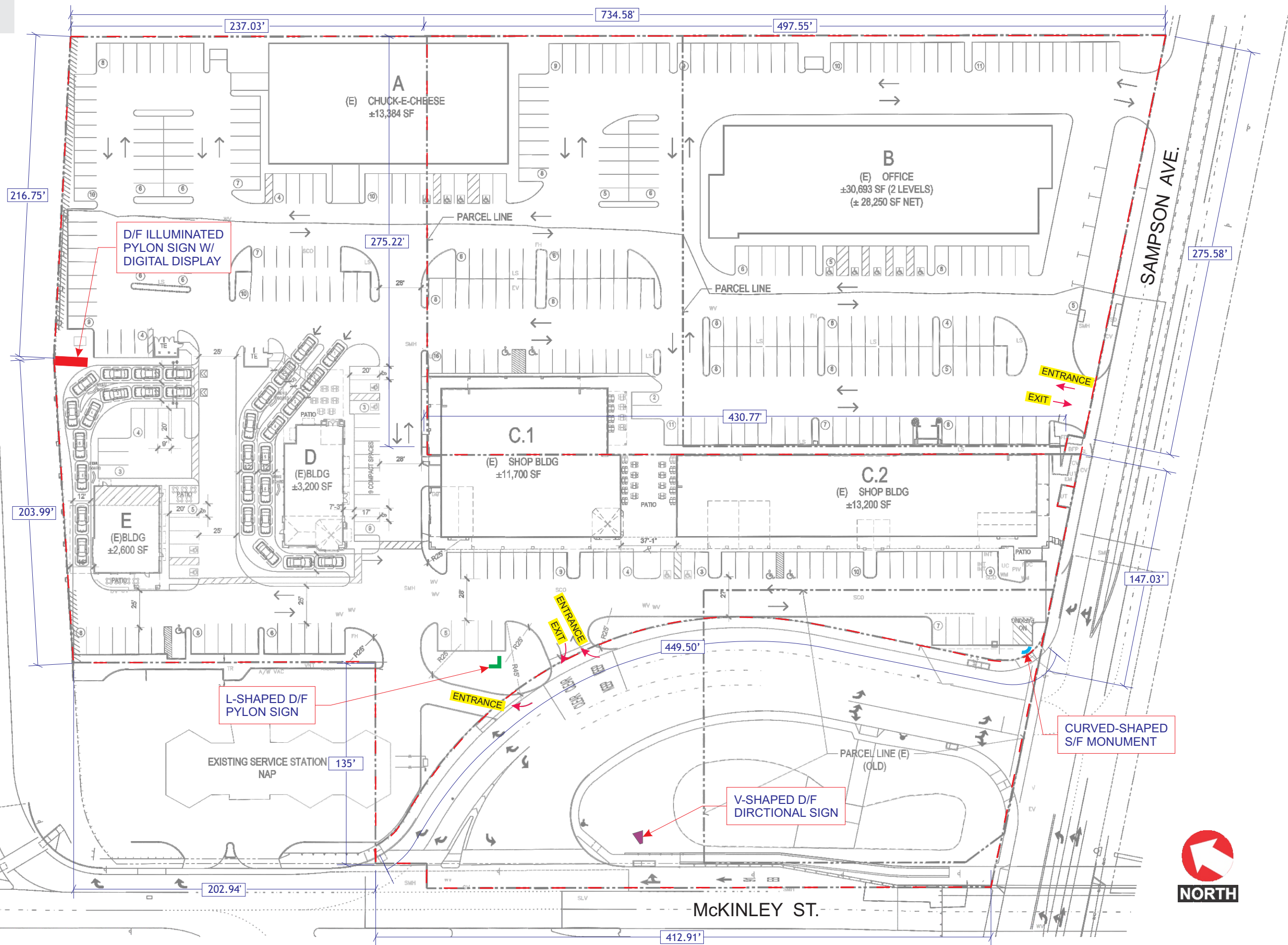


NEW DEVELOPMENT
PLOT PLAN;
PROPERTY LINES

SIGN#2
SUBJECT TO
SEPARATE APPROVAL

**AERIAL PHOTO / SITE PLAN - CORNER OF MCKINLEY ST. & SAMPSON AVE.
NOT TO SCALE**

LOS ARCOS PLAZA



LEGEND

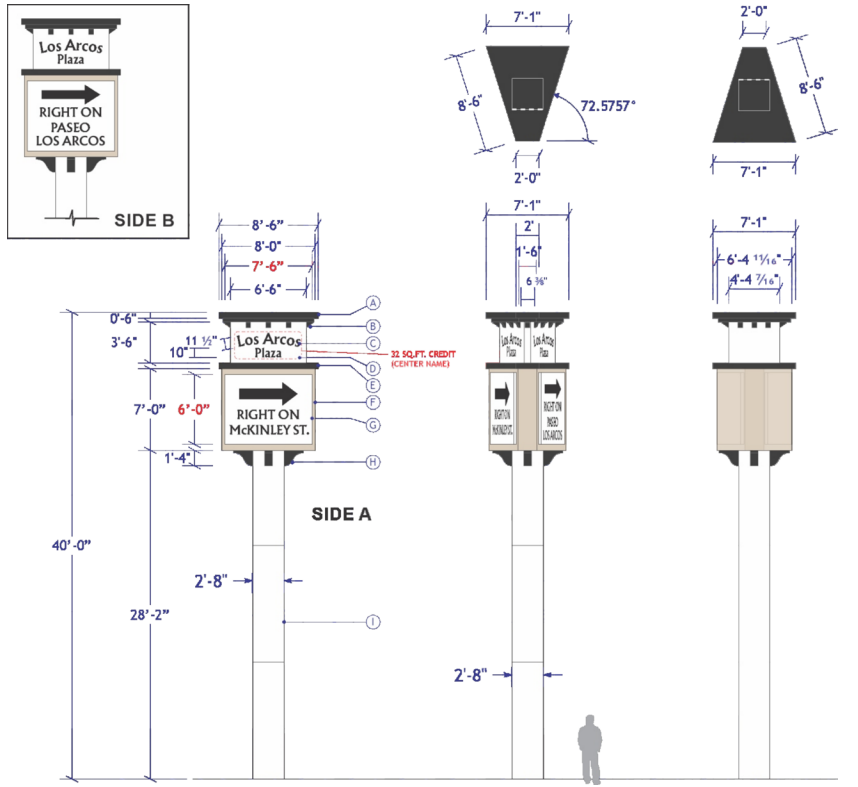
- PROPERTY LINE
- DOUBLE FACED PYLON SIGN W/ DIGITAL DISPLAY
- 55' PYLON SIGN L-SHAPED
- V-SHAPED DOUBLE FACED DIRECTIONAL SIGN
- CURVED SHAPED SINGLE FACED MONUMENT SIGN



PLOT PLAN

SCALE: 1/64" = 1'-0"

LOS ARCOS PLAZA



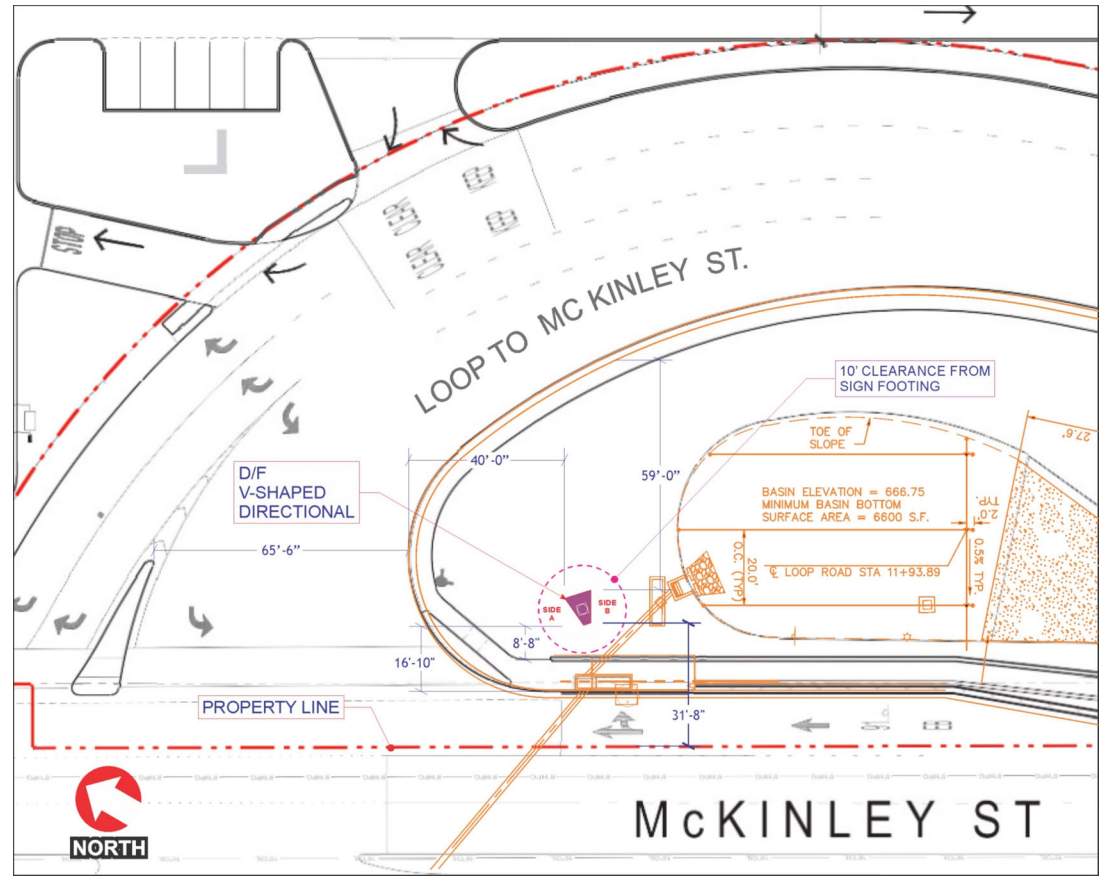
ILLUMINATED; D/F DIRECTIONAL SIGN 45 SQ.FT. FRONT VIEW BACK VIEW ②

SCALE: 3/32" = 1'-0"
SIGN #2

- A. ALUMINUM TOPPER; CLADDING PAINTED TO MATCH BUILDING ACCENTS. (COLOR TBD)
- B. ALUM. CORNICE ACCENTS; CLADDING PAINTED TO MATCH BUILDING ACCENTS (COLOR TBD)
- C. FRONT-LIT INTERNALLY ILLUMINATED CHANNEL LETTERS. WHITE ACRYLIC FACES DECORATED W/ 3M TRANSLUCENT VINYL FILM; (COLOR TBD.)
- D. ALUMINUM CABINET; CLADDING PAINTED TO MATCH BUILDING COLOR.(COLOR TBD).
- E. ALUMINUM ACCENTS; PAINTED TO MATCH.
- F. ALUMINUM CABINETS; PAINTED TO MATCH BUILDING ACCENTS; (COLOR TBD.)
- G. ALUMINUM PAN FACES; 4" DEEP W/ ROUTED OUT DIRECTIONAL COPY W/ 1/2" TRANSLUCENT WHITE PUSH-THRU ACRYLIC LETTERS. DECORATED W/ 3M TRANSLUCENT VINYL. (COLOR TBD.)
- H. ALUM. CORNICE ACCENTS; CLADDING PAINTED TO MATCH BUILDING ACCENTS (COLOR TBD)
- I. ALUMINUM CLADDING; POLE COVERS. PAINTED TO MATCH BUILDING ACCENT. COLOR TBD.

***NOTE; DIRECTIONAL SIGN
SIDE A IS GRABBING THE ATTENTION OF THE
VEHICLES EXISTING THE EAST BOUND FREEWAY OFF RAMP**

SIGN #2 UNDER A SEPARATE APPLICATION AND SUBJECT TO SEPARATE APPROVAL



SCALE: 1/32" = 1'-0"

PROPOSED;
COLOR SCHEDULE

BLACK MAGIC SW 6991	RIVERS EDGE SW 7517	WHITE
------------------------	------------------------	-------