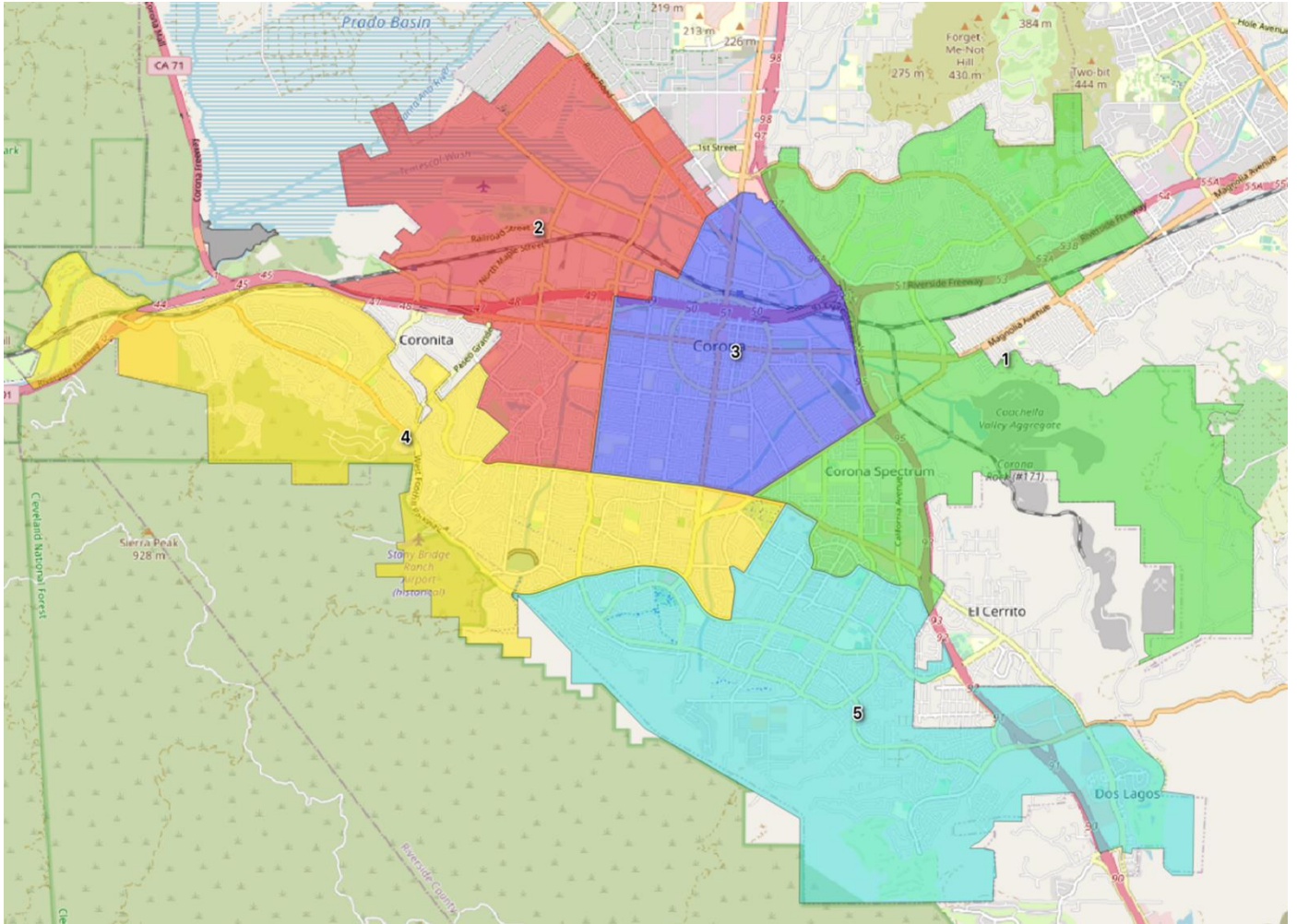


Map Option 1 with Demographic Data



District	Total Population	Raw Population	% Population	CVAP*19 Total	CVAP19 NL** White	CVAP19 NL Black	CVAP Hispanic	CVAP19 Not Hispanic	CVAP19 NL AIAN***	CVAP19 NL ASIAN	CVAP19 NL Hawaiian	CVAP19 NL Other
1	31,613	77	0.24%	22,082	8,647	1,924	7,565	14,502	83	3,282	127	73
2	31,674	138	0.44%	19,562	6,918	1,182	9,661	9,906	43	1,209	50	69
3	31,579	43	0.14%	19,182	6,929	592	10,631	8,563	78	806	32	36
4	31,443	-93	-0.29%	24,498	11,520	1,140	7,660	16,853	58	3,410	236	146
5	31,370	-166	-0.53%	23,962	12,082	1,692	5,540	18,384	31	3,937	87	141
Total	157,679											
Ideal	31,536	Deviation	0.96%									
*CVAP =	Citizen voting age population											
**NL =	Non-Latino											
***AIAN=	American Indian Alaskan Native											

Map Option 2

Deviation 36.48%

