

SANTA ANA RIVER MAINSTEM ALCOA ALUMINUM DIKE PHASE 2

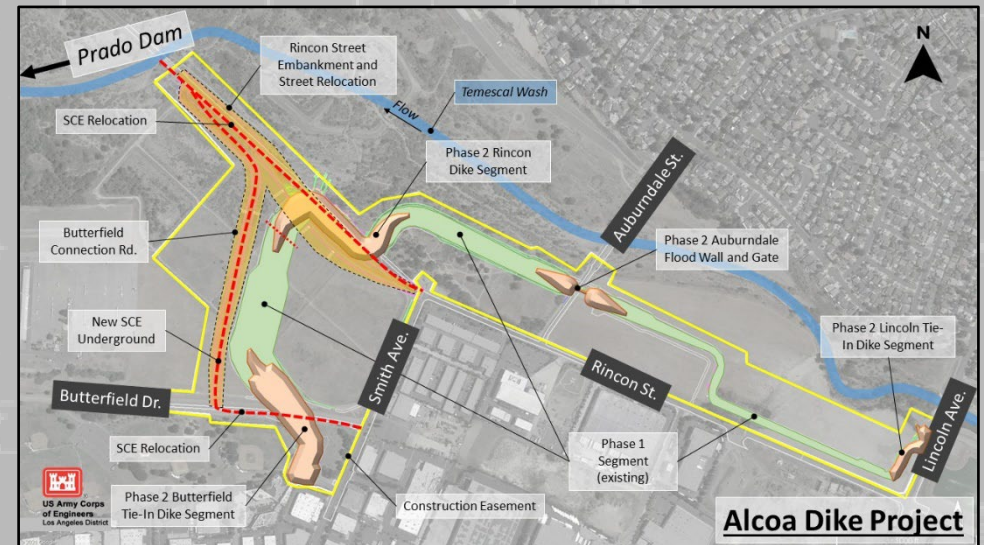
UPDATE #3 FOR: CITY OF CORONA, CA

U.S. Army Corps of Engineers

February 15, 2023



US Army Corps
of Engineers®



Alcoa Dike Project

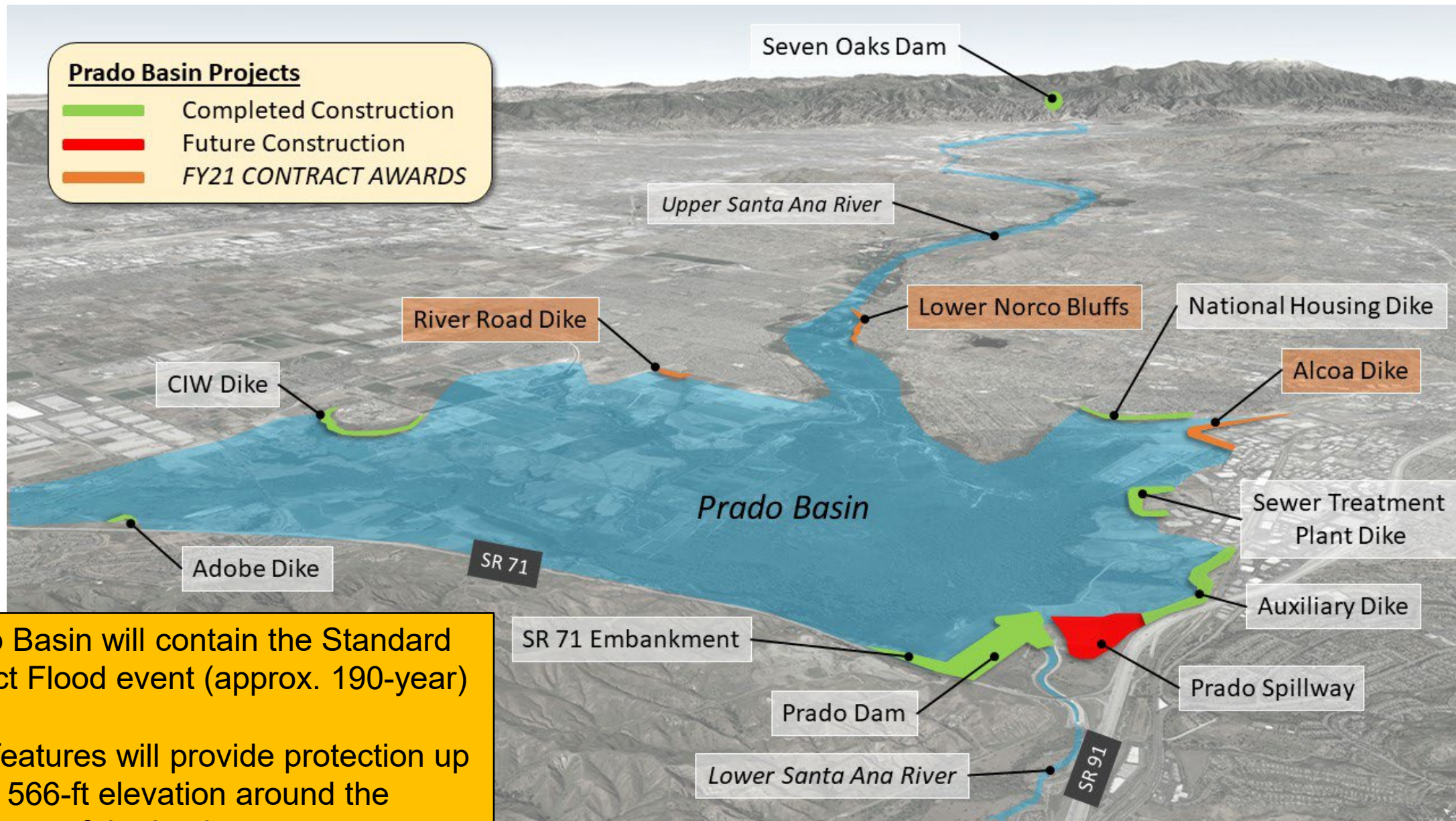


PRADO BASIN PROJECT FEATURES



Prado Basin Projects

- Completed Construction
- Future Construction
- FY21 CONTRACT AWARDS



Prado Basin will contain the Standard Project Flood event (approx. 190-year)

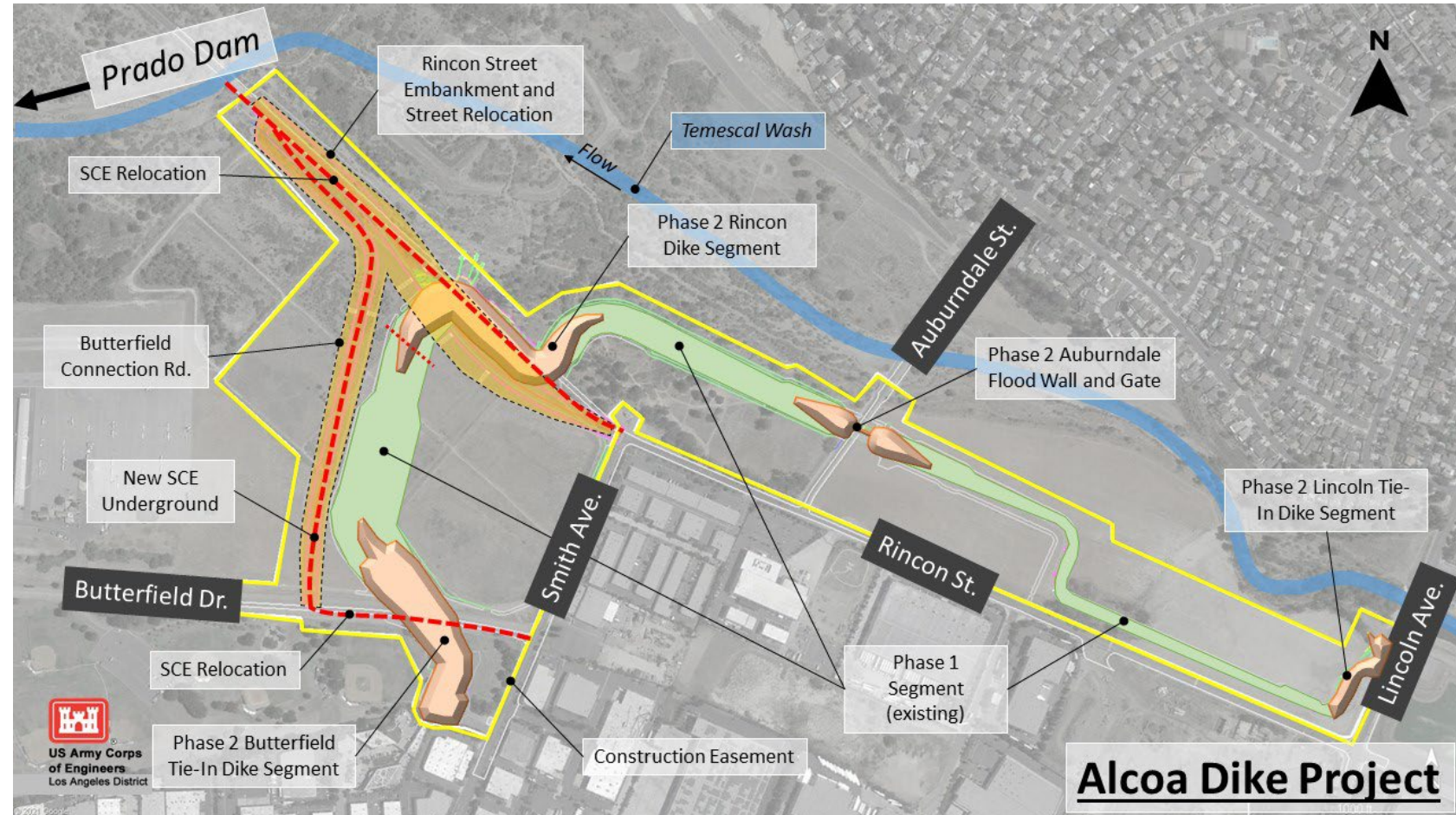
Dike features will provide protection up to the 566-ft elevation around the perimeter of the basin



ALCOA ALUMINUM DIKE PHASE 2: PROJECT BACKGROUND

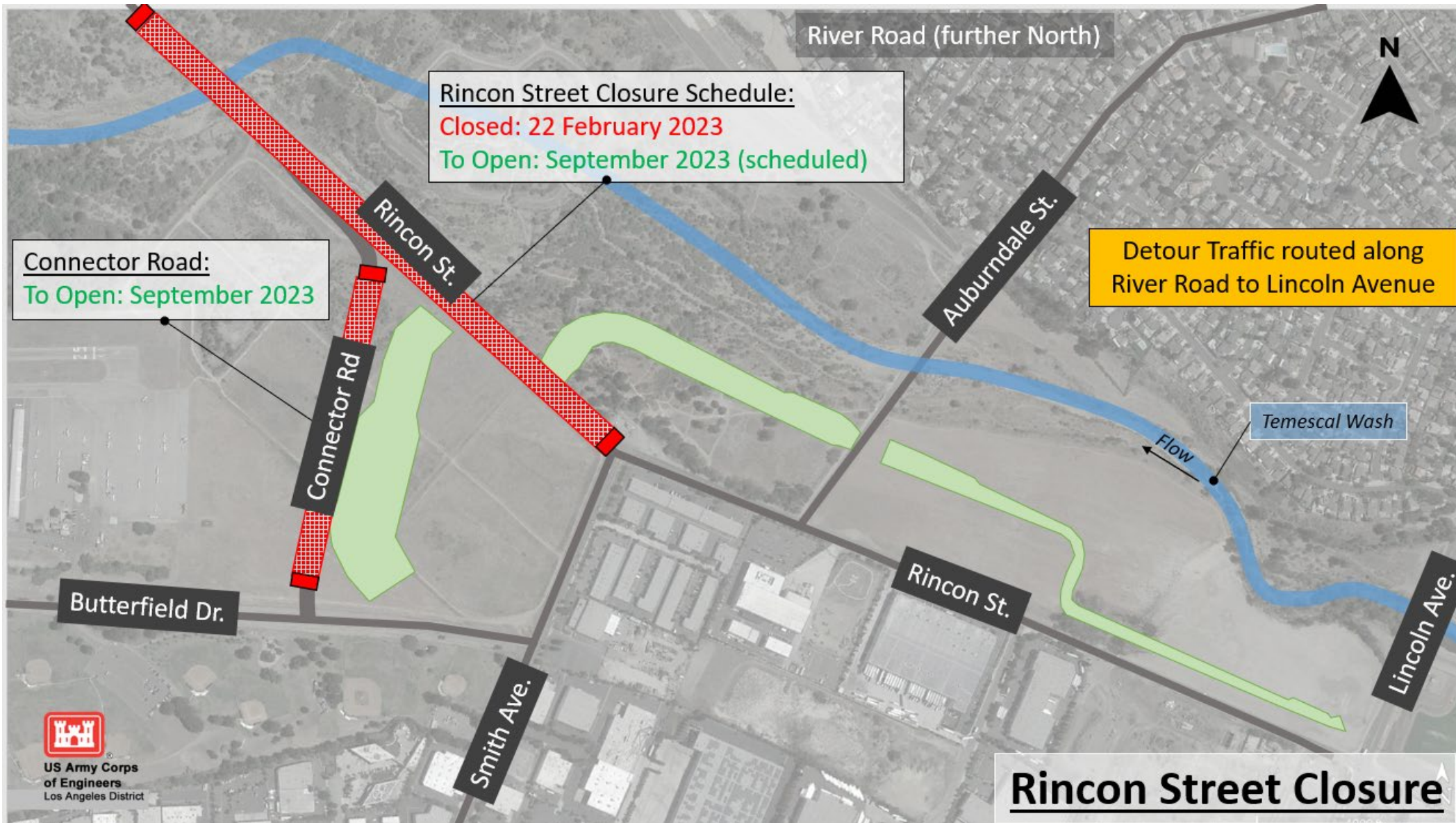
Status:

- Awarded September 2021 to Empire Equipment Service for \$25M
- Working with Southern California Edison and city for utility relocations
- Earthwork and road relocations: December 2021 – January 2024
- Hardscape warranty will begin in February 2024.
- Hydroseed application and 12-month contractor landscape maintenance period: February 2024 - February 2025
- Project will be turned over to Orange County Public Works for maintenance in February 2025.





TEMPORARY RINCON STREET CLOSURE



Rincon Street Closure



DETOUR FOR TEMPORARY RINCON CLOSURE

Effective: 22 February 2023

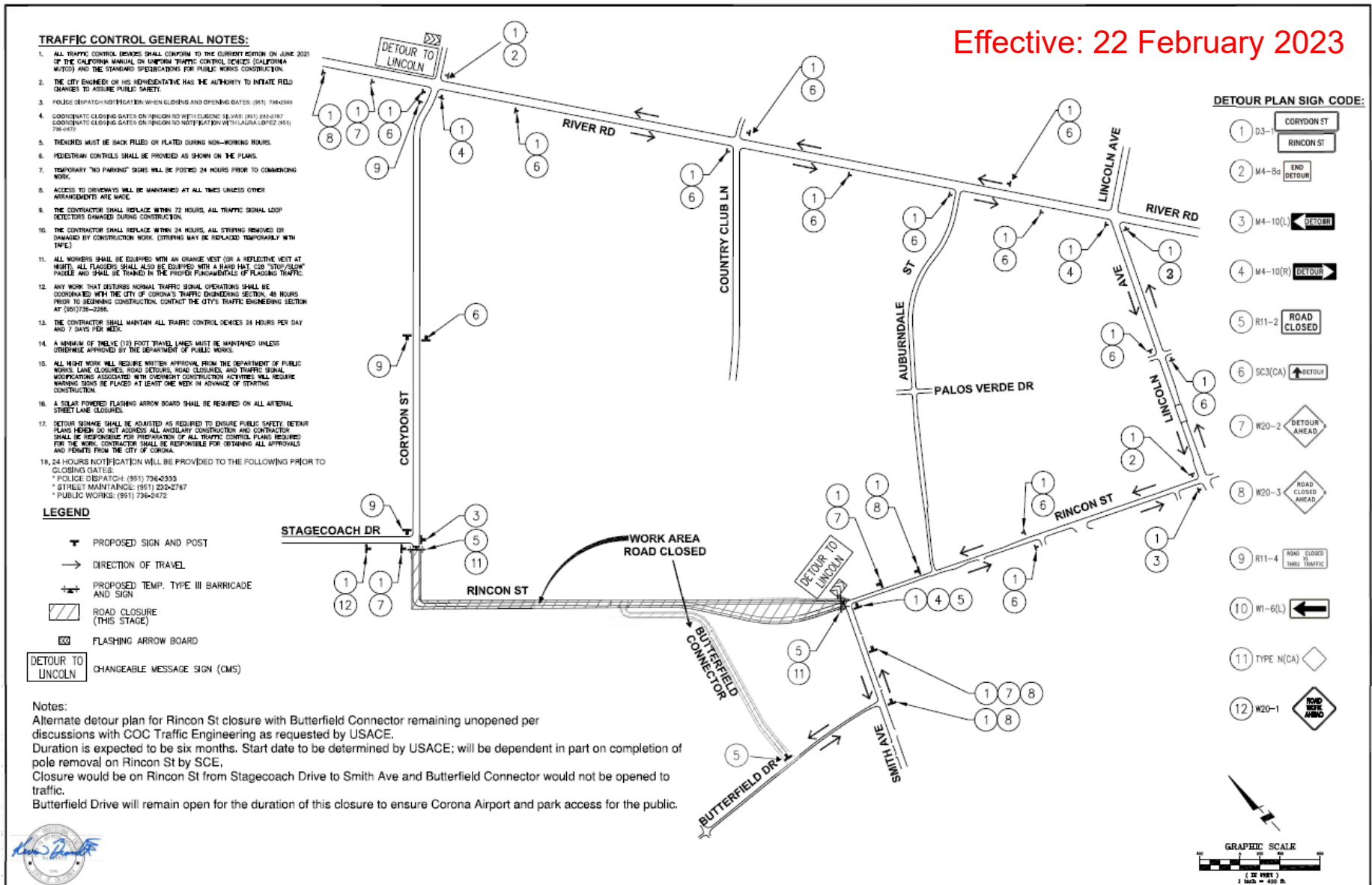
TRAFFIC CONTROL GENERAL NOTES:

- ALL TRAFFIC CONTROL DEVICES SHALL CONFORM TO THE CURRENT EDITION ON JUNE 2021 OF THE CALIFORNIA MANUAL ON UNIFORM TRAFFIC CONTROL DEVICES (CALIFORNIA MUTCD) AND THE STANDARD SPECIFICATIONS FOR PUBLIC WORKS CONSTRUCTION.
- THE CITY ENGINEER OR HIS REPRESENTATIVE HAS THE AUTHORITY TO INITIATE FIELD CHANGES TO ASSURE PUBLIC SAFETY.
- POLICE DISPATCH/NOTIFICATION WHEN CLOSING AND OPENING GATES: (911) 736-0333
- COORDINATE CLOSING GATES ON RINCON RD WITH LUCAS/EMILY SELVAZ: (911) 232-0787
COORDINATE CLOSING GATES ON RINCON RD WITH LAURA LOPEZ: (911) 736-0472
- TRUCKS MUST BE BACK FULLED OR FLATED DURING NON-WORKING HOURS.
- PEDESTRIAN CONTROLS SHALL BE PROVIDED AS SHOWN ON THE PLANS.
- TEMPORARY "NO PARKING" SIGNS WILL BE POSTED 24 HOURS PRIOR TO COMMENCING WORK.
- ACCESS TO OVERPASS WILL BE MAINTAINED AT ALL TIMES UNLESS OTHER ARRANGEMENTS ARE MADE.
- THE CONTRACTOR SHALL REPLACE WITHIN 72 HOURS, ALL TRAFFIC SIGNAL LOOP DETECTORS DAMAGED DURING CONSTRUCTION.
- THE CONTRACTOR SHALL REPLACE WITHIN 24 HOURS, ALL STRIPING REMOVED OR DAMAGED BY CONSTRUCTION WORK. (STRIPING MAY BE REPLACED TEMPORARILY WITH TAPE)
- ALL WORKERS SHALL BE EQUIPPED WITH AN ORANGE VEST (OR A REFLECTIVE VEST AT NIGHT), ALL FLAGGERS SHALL ALSO BE EQUIPPED WITH A HARD HAT, CDR "STOP/FLOW" PADDLE AND SHALL BE TRAINED IN THE PROPER FUNDAMENTALS OF FLAGGING TRAFFIC.
- ANY WORK THAT DISTURBS NORMAL TRAFFIC SIGNAL OPERATIONS SHALL BE COORDINATED WITH THE CITY OF CORONA'S TRAFFIC ENGINEERING SECTION 48 HOURS PRIOR TO BEGINNING CONSTRUCTION. CONTACT THE CITY'S TRAFFIC ENGINEERING SECTION AT (951)736-2266.
- THE CONTRACTOR SHALL MAINTAIN ALL TRAFFIC CONTROL DEVICES 24 HOURS PER DAY AND 7 DAYS PER WEEK.
- A MINIMUM OF TWELVE (12) FOOT TRAVEL LINES MUST BE MAINTAINED UNLESS OTHERWISE APPROVED BY THE DEPARTMENT OF PUBLIC WORKS.
- ALL NIGHT WORK WILL REQUIRE WRITTEN APPROVAL FROM THE DEPARTMENT OF PUBLIC WORKS. LANE CLOSURES, ROAD DETOURS, ROAD CLOSURES, AND TRAFFIC SIGNAL MODIFICATIONS ASSOCIATED WITH CONCURRENT CONSTRUCTION ACTIVITIES WILL REQUIRE WARNING SIGNS BE PLACED AT LEAST ONE WEEK IN ADVANCE OF STARTING CONSTRUCTION.
- A SOLAR POWERED FLASHING ARROW BOARD SHALL BE REQUIRED ON ALL ARTERIAL STREET LANE CLOSURES.
- DETOUR SIGNAGE SHALL BE ADJUSTED AS REQUIRED TO ENSURE PUBLIC SAFETY. DETOUR PLANS HEREIN DO NOT ADDRESS ALL ANCILLARY CONSTRUCTION AND CONTRACTOR SHALL BE RESPONSIBLE FOR PREPARATION OF ALL TRAFFIC CONTROL PLANS REQUIRED FOR THE WORK. CONTRACTOR SHALL BE RESPONSIBLE FOR OBTAINING ALL APPROVALS AND PERMITS FROM THE CITY OF CORONA.
- 24 HOURS NOTIFICATION WILL BE PROVIDED TO THE FOLLOWING PRIOR TO CLOSING GATES:
* POLICE DISPATCH: (951) 736-0333
* STREET MAINTENANCE: (951) 232-2747
* PUBLIC WORKS: (951) 736-0472

LEGEND

- PROPOSED SIGN AND POST
- DIRECTION OF TRAVEL
- PROPOSED TEMP. TYPE III BARRICADE AND SIGN
- ROAD CLOSURE (THIS STAGE)
- FLASHING ARROW BOARD
- DETOUR TO LINCOLN CHANGEABLE MESSAGE SIGN (CMS)

Notes:
 Alternate detour plan for Rincon St closure with Butterfield Connector remaining unopened per discussions with COC Traffic Engineering as requested by USACE.
 Duration is expected to be six months. Start date to be determined by USACE; will be dependent in part on completion of pole removal on Rincon St by SCE.
 Closure would be on Rincon St from Stagecoach Drive to Smith Ave and Butterfield Connector would not be opened to traffic.
 Butterfield Drive will remain open for the duration of this closure to ensure Corona Airport and park access for the public.

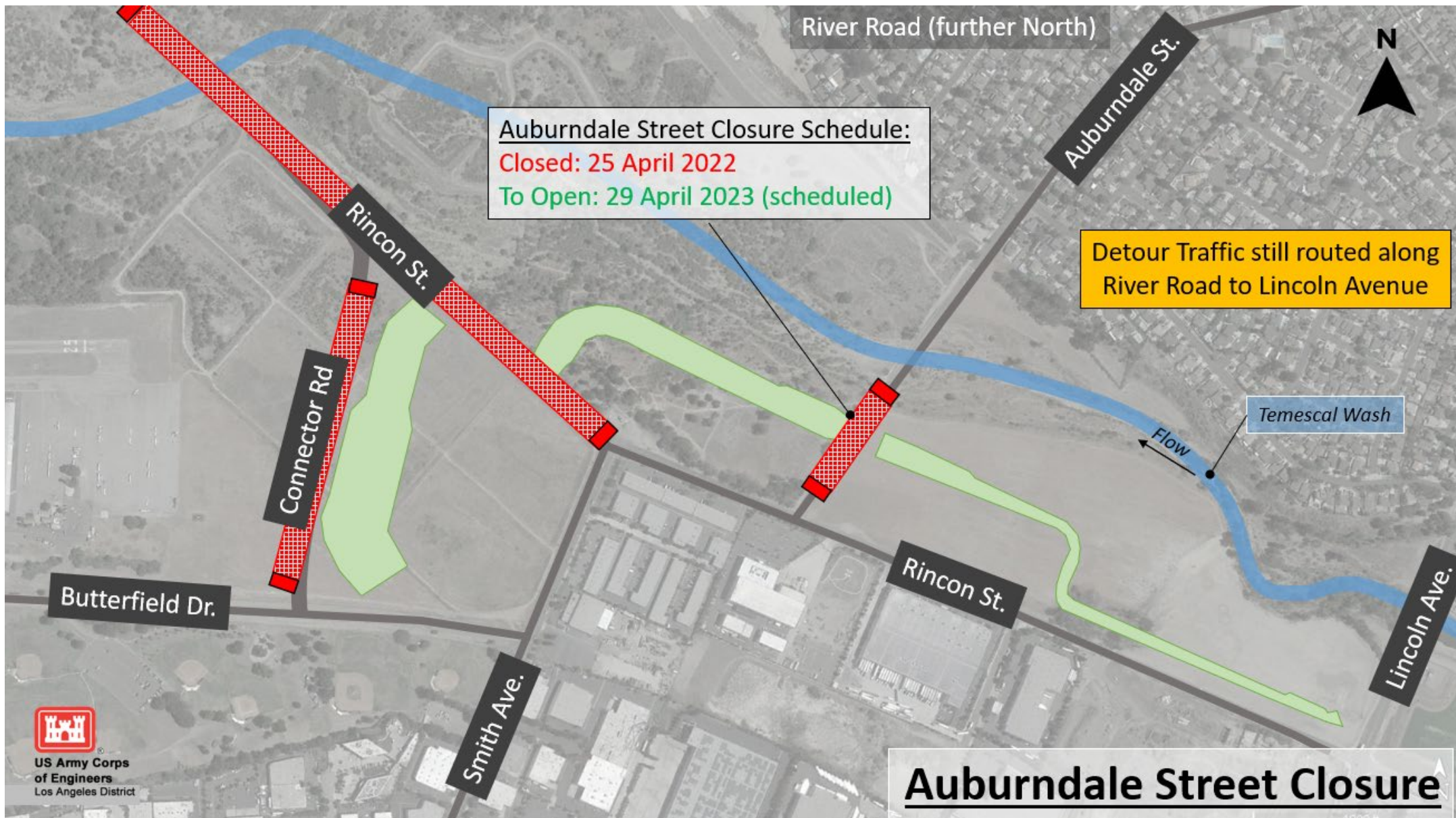


DETOUR PLAN SIGN CODE:

- 1 D3- RINCON ST
- 2 M4-8a END DETOUR
- 3 M4-10(L) DETOUR
- 4 M4-10(R) DETOUR
- 5 R11-2 ROAD CLOSED
- 6 SC3(CA) DETOUR
- 7 W20-2 DETOUR AHEAD
- 8 W20-3 ROAD CLOSED AHEAD
- 9 R11-4 ROAD CLOSED TO TRAFFIC
- 10 W1-6(L) DETOUR
- 11 TYPE N(CA)
- 12 W20-1 ROAD NOT OPEN



TEMPORARY AUBURNDALE STREET CLOSURE



Auburndale Street Closure Schedule:
 Closed: 25 April 2022
 To Open: 29 April 2023 (scheduled)

Detour Traffic still routed along River Road to Lincoln Avenue

Temescal Wash

Flow

Auburndale Street Closure





AUBURNDALE FLOODGATE

Auburndale Floodgate:

- Connects Alcoa Dike across Auburndale St
- 19-ft high x 36-ft wide x 2 feet thick swing gate
- 19-ft high concrete floodwalls transition from floodgate to dike embankment
- Gate to swing 180 degrees closed
- Will include a push/pull bar to facilitate manual operation of the gate
- Scheduled for MAR 2023 installation



Photo as of 03FEB23



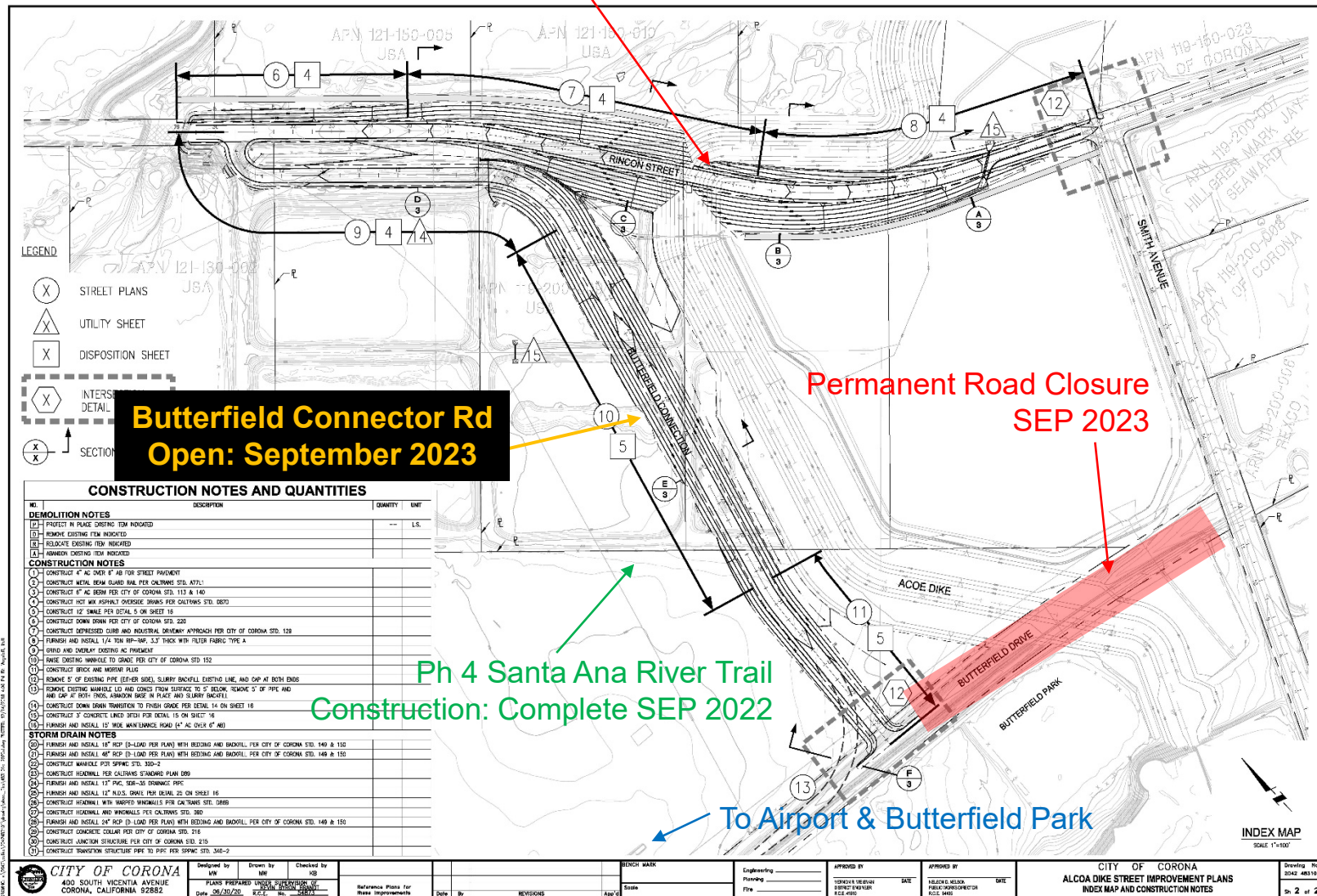
FINAL ROAD RE-ALIGNMENT LAYOUT



Rincon St Re-alignment
FEB 2023 – SEP 2023

Road Relocation Plan at Rincon and Butterfield:

- New Butterfield Connector Rd is near completion, will open simultaneously with the new Rincon St (Scheduled completion September 2023)
- Existing Rincon St. will be raised to cross over the Alcoa Dike (Scheduled completion September 2023)
- Existing Butterfield Dr. will be removed between Smith Ave. and new connector road (Scheduled completion November 2023)



**Butterfield Connector Rd
Open: September 2023**

**Permanent Road Closure
SEP 2023**

**Ph 4 Santa Ana River Trail
Construction: Complete SEP 2022**

To Airport & Butterfield Park



ALCOA DIKE PHASE 2: PROGRESS PHOTOS



Auburndale Floodwall and Floodgate Columns



Foundation for utility protection, Auburndale Floodgate



ALCOA DIKE PHASE 2 PROGRESS PHOTOS



Bike path along the adjacent Santa Ana River Trail (Phase 4)



DG Section of new Santa Ana River Trail



Placement of riprap (stone protection) in Butterfield Park section of Dike



QUESTIONS?



Floodwall site at Auburndale



Dike tie-in at Lincoln