



Relocation Options for the Corona Depot Building

(150 Depot Drive, Corona)

Aminah Mears, DPA

Assistant to the City Manager

The Ask...

That the City Council provide direction on one of four options regarding the relocation of the Corona Depot Building at 150 Depot Drive, Corona.



Background

1937

The Corona Depot building was built as a train station for the Santa Fe Railroad

2004

Placed on the City's Heritage Inventory (CMC Section 1763.090) and ranked "high with rehabilitation" as a potential listing for a local landmark



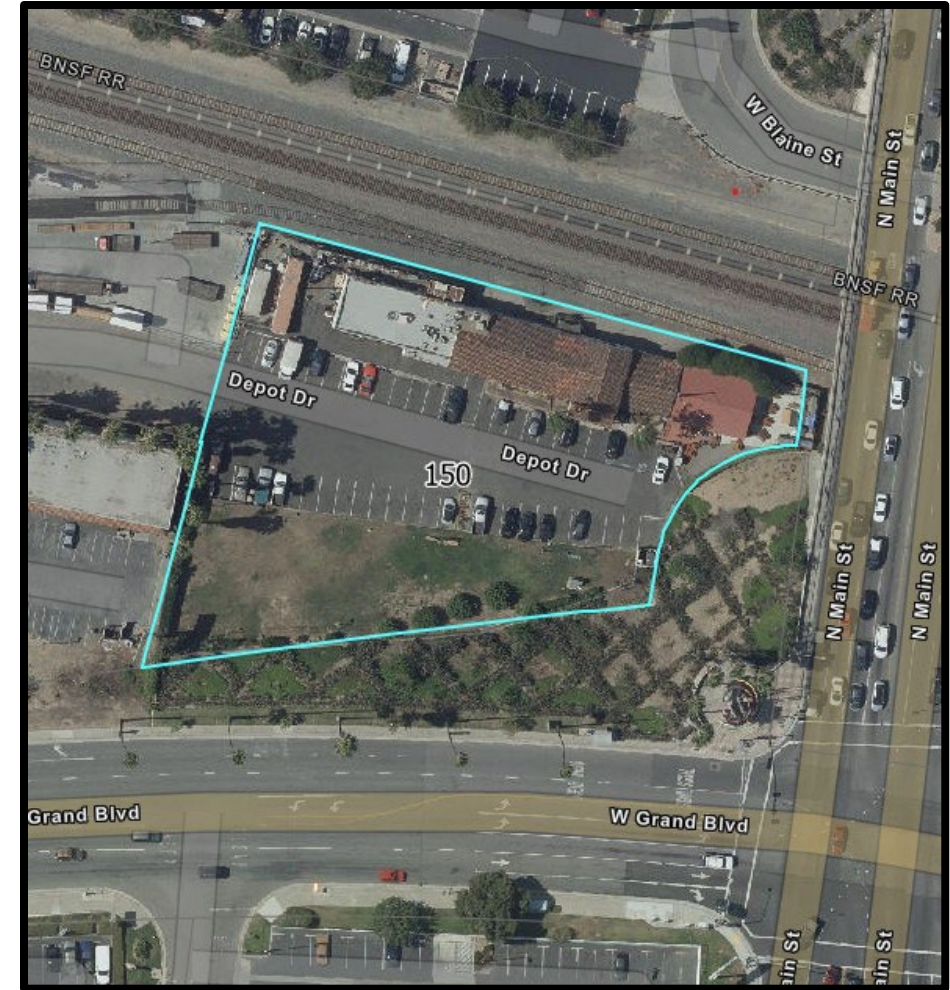
Background

Council Action

- Requested staff to research the feasibility of moving part of or all of the Corona Depot Building to a different location

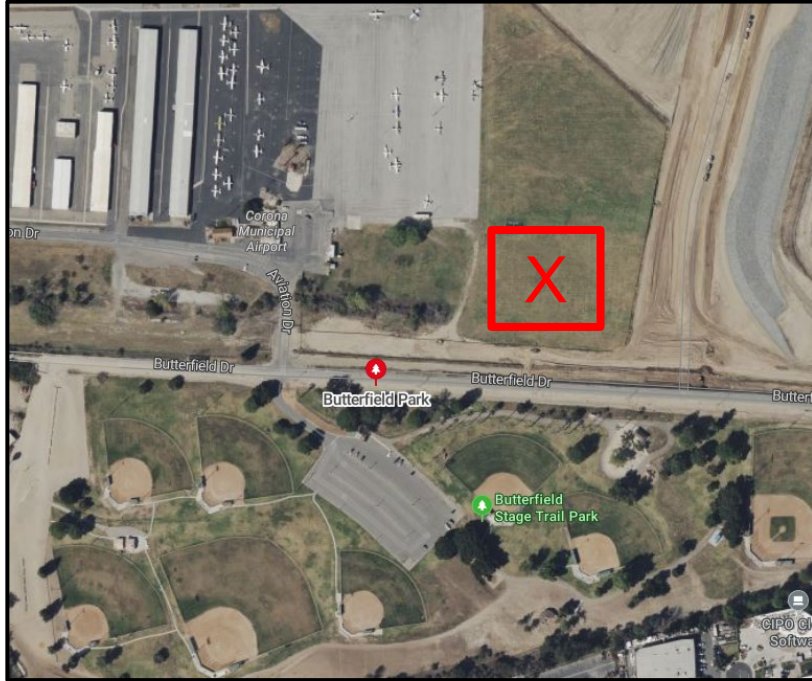
Structural Examination by Mover

- Not feasible to move the entire building due to the condition of some parts of the structure
- The non-original shade structure(east side) and freight room (west side) are not feasible to deconstruct and relocate

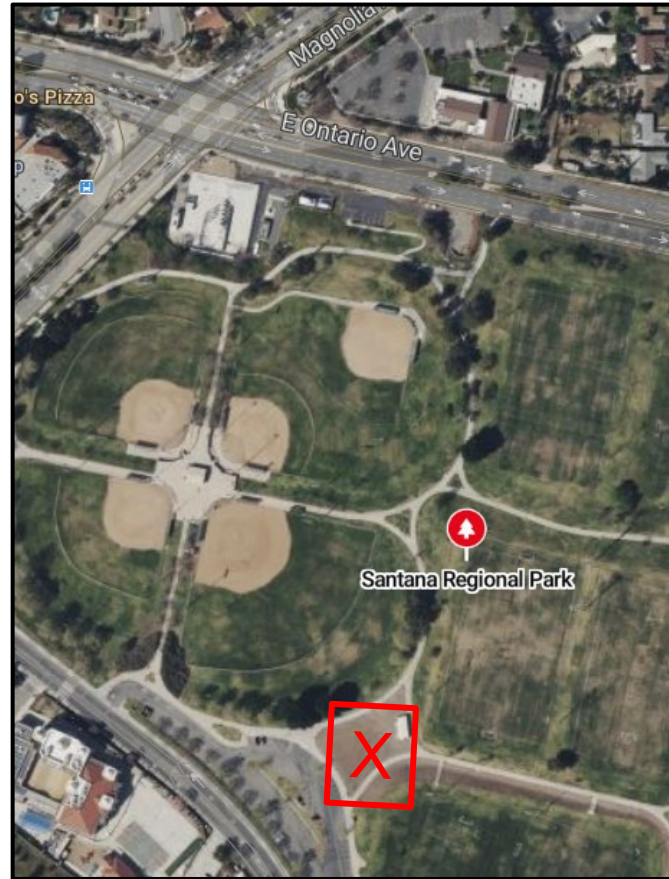




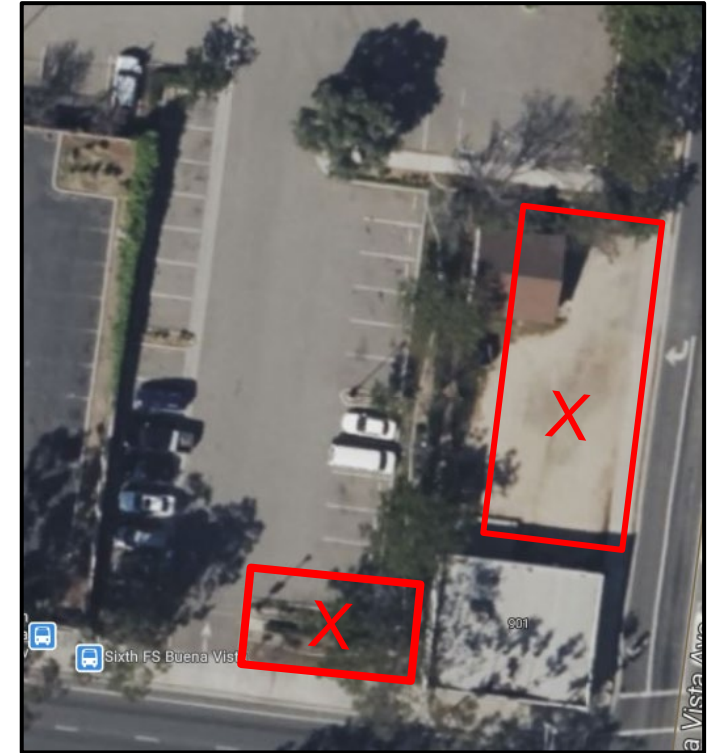
Locations



Butterfield Park



Santana Regional Park



901 W. 6th Street
Old Crown Vacuum & Sewing Store
(NW of 6th and Buena Vista)

Identified Options



Option 1

Do not move structure

Estimated Costs:
None

Option 2

Relocate the Waiting Room
and Enclosed Patio Areas of
the building

Estimated Costs:
Deconstruct + Relocate
approx. \$250,000

Option 3

Relocate the General
Office and Baggage Areas

Estimated Costs:
Deconstruct + Relocate
approx. \$400,000

Option 4

Relocate all "moveable"
portions of the building
(General Office/Baggage
Area and Waiting Room)

Estimated Costs:
Deconstruct + Relocate
approx. \$500,000

A \$50,000 off set donation from Ganahl Lumber is anticipated if the building is relocated

The Ask...

That the City Council provide direction on one of four options regarding the relocation of the Corona Depot Building at 150 Depot Drive, Corona.



Thank you!
