

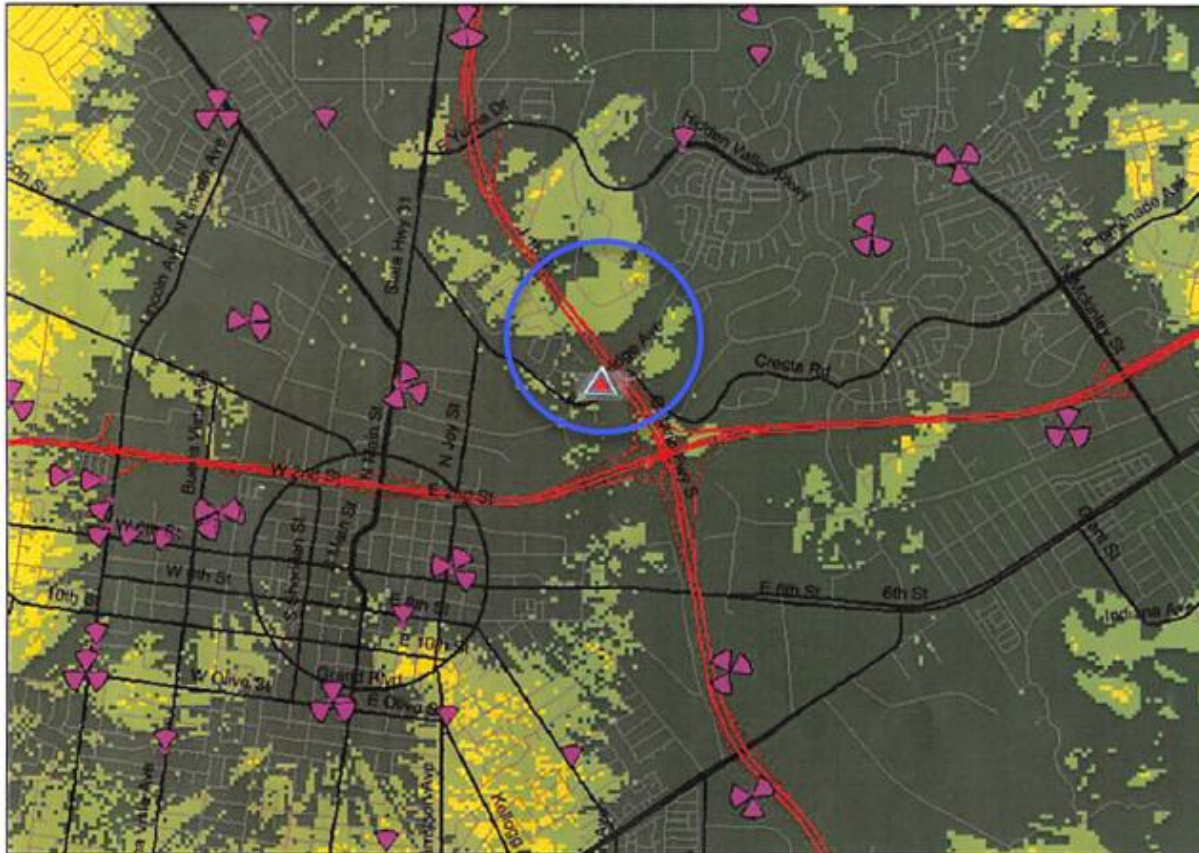
# AERIAL & ZONING MAP



R1-7.2 - Single Family Residential (7,200 square foot minimum lots)  
R1-9.6 - Single Family Residential (9,600 square foot minimum lots)  
A14.4 - Single Family Residential (14,400 square foot minimum lots)  
A - Agricultural  
M-1 - Light Manufacturing  
MSI - Medium Service Industry district of SP82-2  
SFR6 - Single Family Residential district of SP81-2  
Golf - Golf Course of SP81-2



# Existing LTE 2100 Coverage without IE94897C



ON AIR :



Macro

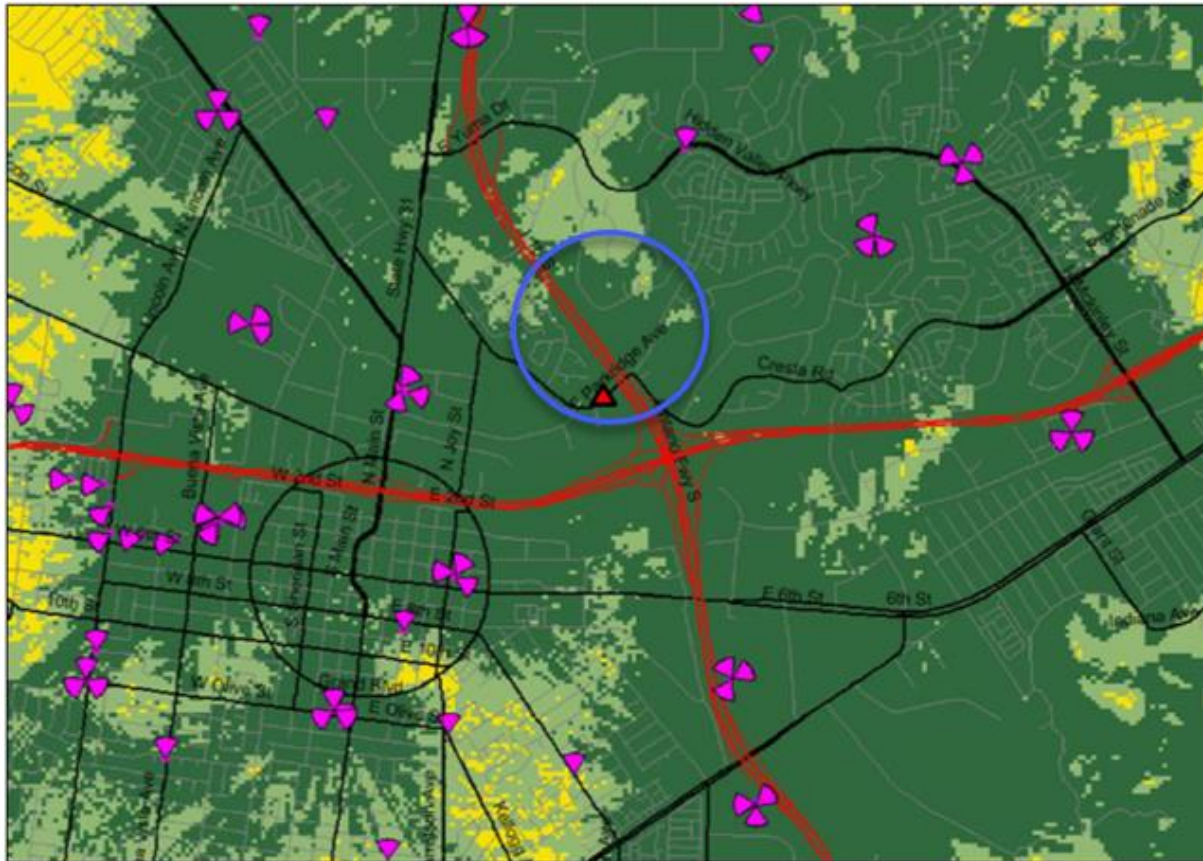


Proposed Project Site

## Legend

- In-building Commercial
- In-building *residential*
- In-Vehicle
- Outdoor

**T-Mobile**



New Site :



IE94897C

ON AIR :

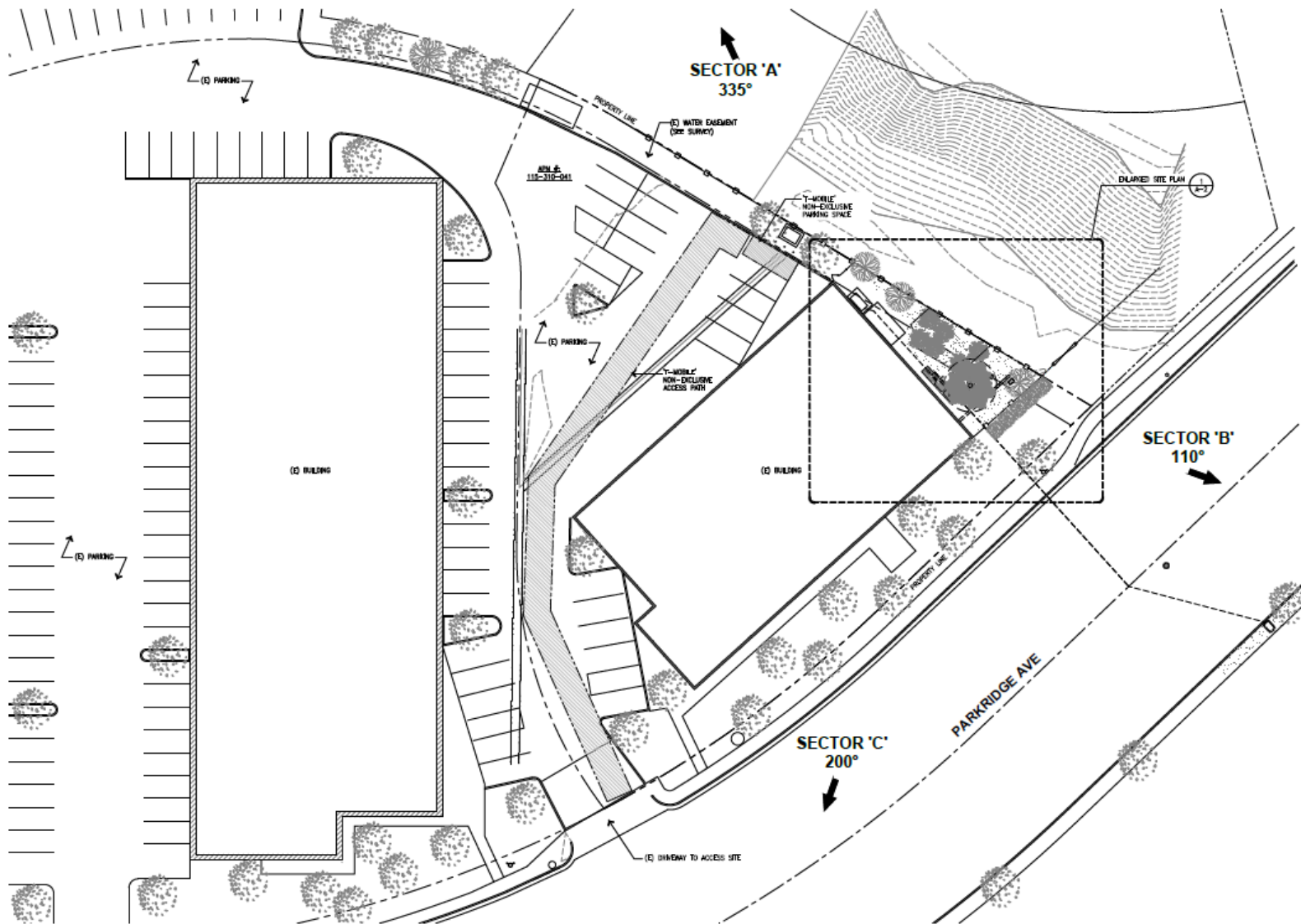


## Macro

**Legend**

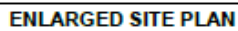
- In-building Commercial
- In-building
- In-Vehicle
- Outdoor





NOTES:  
 • UTILITY INFO IS PRELIMINARY AND WILL BE DETERMINED BY THE FINAL UTILITY COORDINATION.

# SITE PLAN

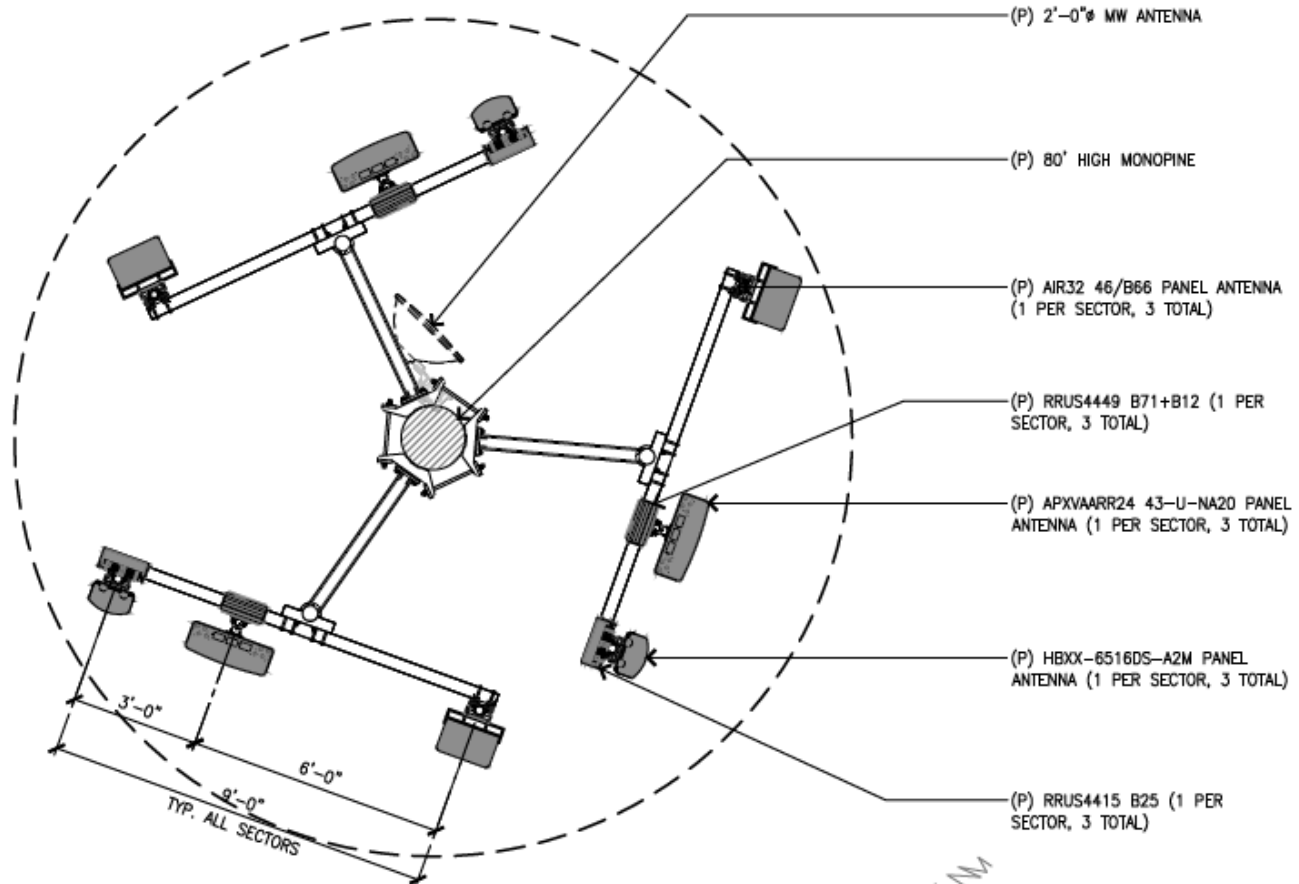




**SECTOR 'A'**  
335°

**SECTOR 'C'**  
200°

**SECTOR 'B'**  
110°



**NOTE:**

ANTENNAS/ASSOCIATED EQUIPMENT SHALL BE  
PAINTED GREEN TO MATCH THE MONOPINE NEEDLES.

**ANTENNA PLAN**



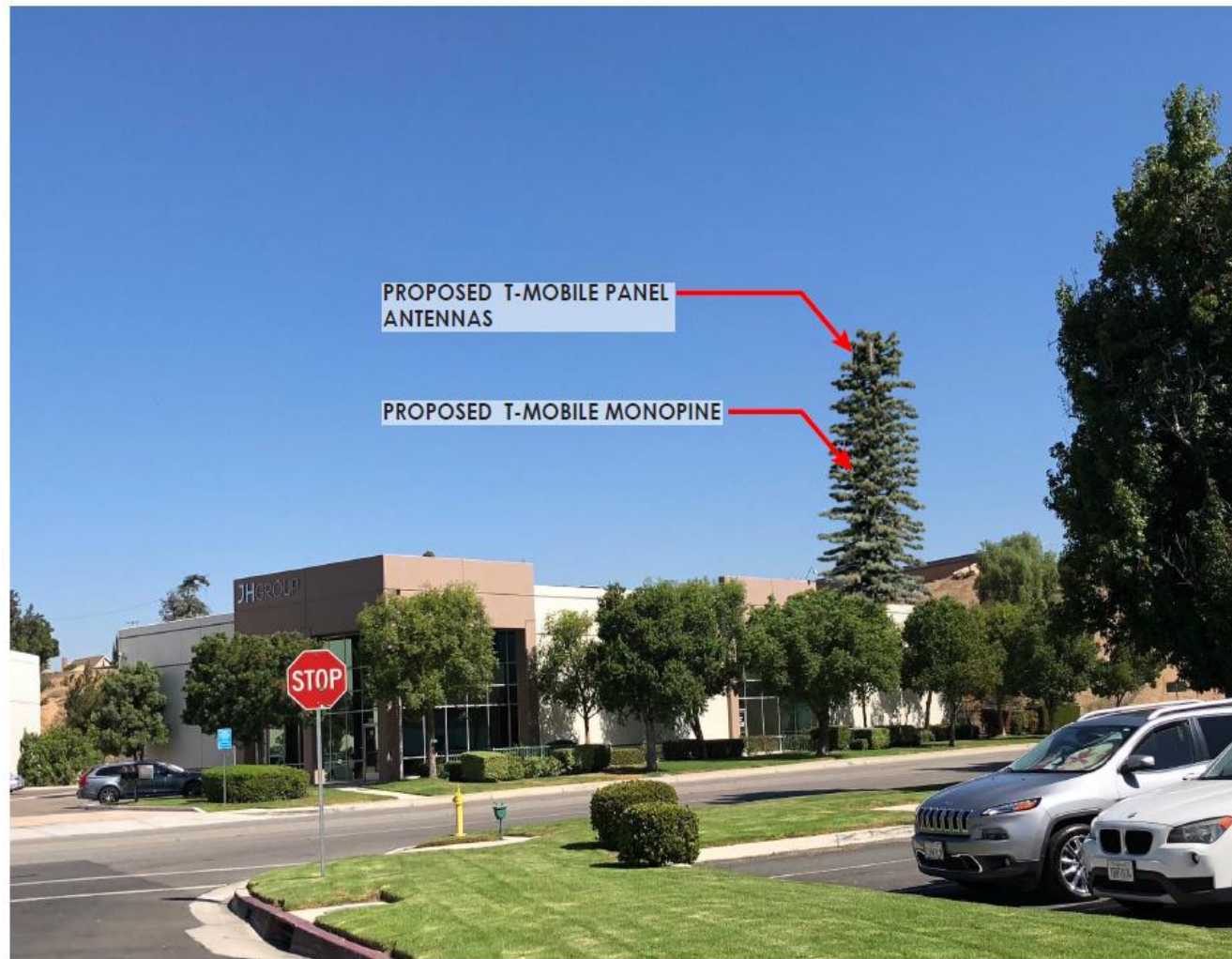
SCALE  
3/8"=1'-0"

**1**

**ANTENNA PLAN**







"Proposed View A"



"Existing View A"



"Vicinity Map" Copyright: Google Maps, 2018

**IE94897C**

809 E. PARKRIDGE AVE., CORONA, CA 92879

# PHOTOSIMS



Proposed View B"



"Existing View B"



"Vicinity Map" Copyright: Google Maps, 2018

**IE94897C**

809 E. PARKRIDGE AVE., CORONA, CA 9



# PHOTOSIMS





"Existing View C"



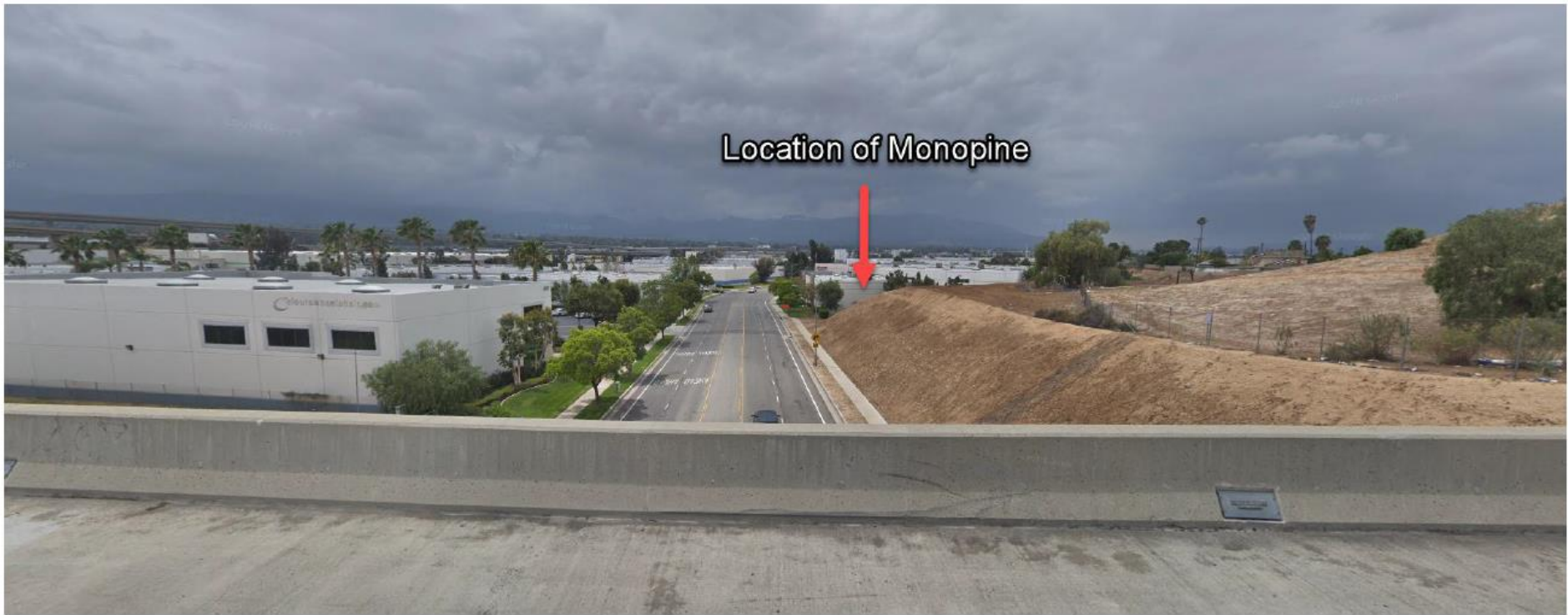
Copyright: Google Maps, 2018

**IE94897C**

809 E. PARKRIDGE AVE., CORONA, CA 92879

# PHOTOSIMS





Location of Monopine

View from Interstate 15 bridge over Parkridge Avenue.