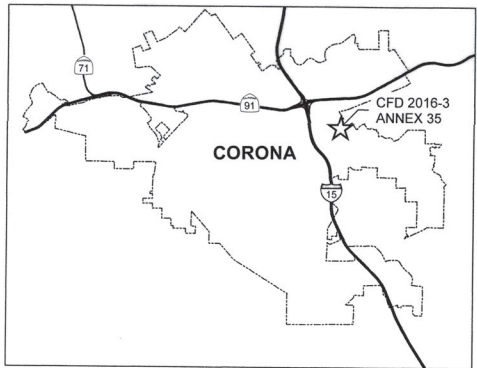
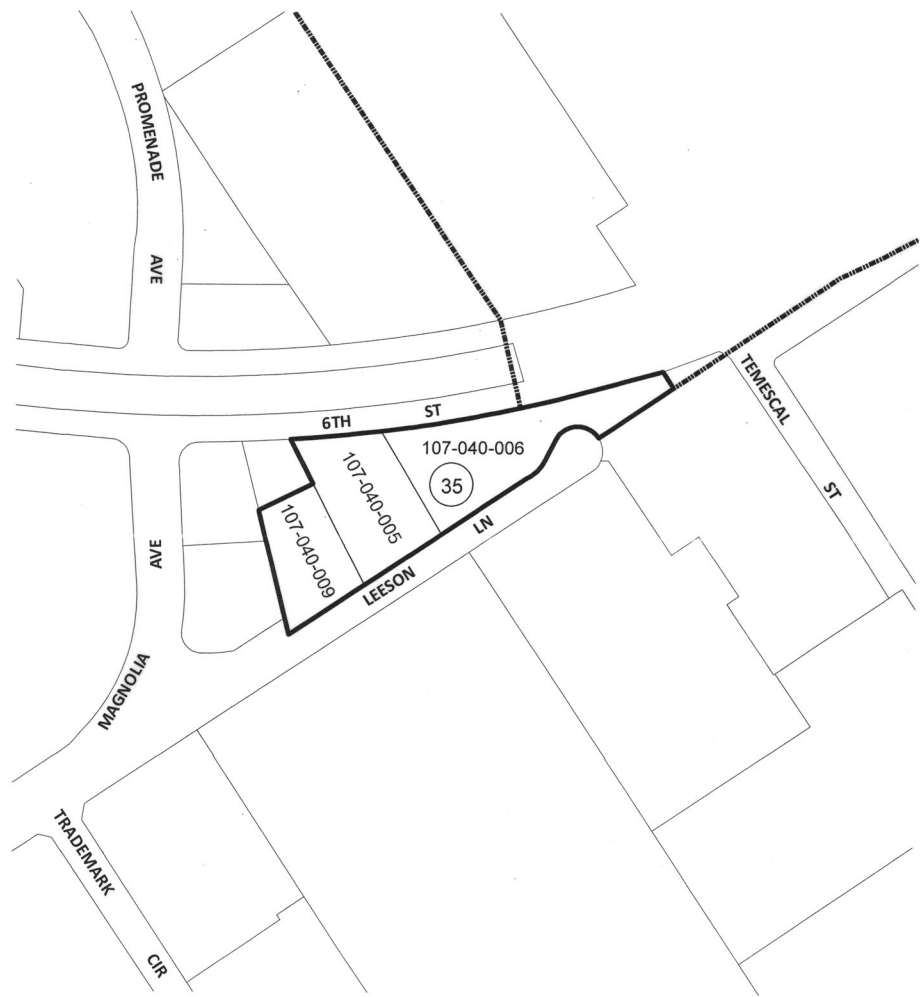


ANNEXATION MAP NO. 35
COMMUNITY FACILITIES DISTRICT NO. 2016-3
(MAINTENANCE SERVICES)
CITY OF CORONA, COUNTY OF RIVERSIDE, STATE OF CALIFORNIA

THIS MAP SHOWS THE BOUNDARIES OF AREAS TO BE ANNEXED TO COMMUNITY FACILITIES DISTRICT NO. 2016-3 (MAINTENANCE SERVICES), OF THE CITY OF CORONA, COUNTY OF RIVERSIDE, STATE OF CALIFORNIA.

THE BOUNDARIES OF WHICH COMMUNITY FACILITIES DISTRICT ARE SHOWN AND DESCRIBED ON THE MAP THEREOF WHICH WAS PREVIOUSLY RECORDED ON NOVEMBER 7, 2016 IN BOOK 80 OF MAPS OF ASSESSMENT AND COMMUNITY FACILITIES DISTRICT AT PAGE 24 AND AS INSTRUMENT NO. 2016-0494014 IN THE OFFICE OF THE COUNTY RECORDER OF THE COUNTY OF RIVERSIDE, STATE OF CALIFORNIA.



I HEREBY CERTIFY THAT THE WITHIN MAP SHOWING PROPOSED BOUNDARIES OF COMMUNITY FACILITIES DISTRICT NO. 2016-3 (MAINTENANCE SERVICES), OF THE CITY OF CORONA, COUNTY OF RIVERSIDE, STATE OF CALIFORNIA, WAS APPROVED BY THE CITY COUNCIL OF THE CITY OF CORONA AT A REGULAR MEETING THEREOF, HELD ON 21 DAY OF June, 2023, BY ITS RESOLUTION NO. 2023-048

Krista Duarte for
 CITY CLERK
 CITY OF CORONA

FILED IN THE OFFICE OF THE CITY CLERK, CITY OF CORONA, THIS 21 DAY OF June, 2023.

Krista Duarte for
 CITY CLERK
 CITY OF CORONA

FILED THIS 28 DAY OF June, 2023 AT THE HOUR OF 11:35 O'CLOCK A.M. IN BOOK 91 OF MAPS OF ASSESSMENT AND COMMUNITY FACILITIES DISTRICTS AT PAGE 52 IN THE OFFICE OF THE COUNTY RECORDER, IN THE COUNTY OF RIVERSIDE, STATE OF CALIFORNIA.

FEE: \$ 9.00 NO.: 2023-0185724
 PETER ALDANA, ASSESSOR, COUNTY CLERK, RECORDER

BY: Jackie Cott
 DEPUTY

LEGEND

- CITY BOUNDARY
- ANNEXATION AREA BOUNDARY
- PARCEL BOUNDARY
- XXX-XXX-XXX ASSESSOR'S PARCEL NUMBER
- (35) TAX ZONE



THIS ANNEXATION MAP CORRECTLY SHOWS THE LOT OR PARCEL OF LAND INCLUDED WITHIN THE BOUNDARIES OF THE COMMUNITY FACILITIES DISTRICT. FOR DETAILS CONCERNING THE LINES AND DIMENSIONS OF LOTS OR PARCEL REFER TO THE COUNTY ASSESSOR MAPS FOR FISCAL YEAR 2022-23.