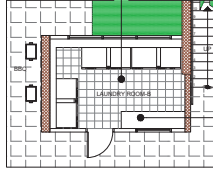


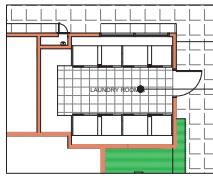
01 02 03 04 05 06 07 08 09 10 11 12 13 14 15 16 17 18 19 20 21 22 23 24 25 26 27 28 29 30 31 32 33 34 35 36 37 38 39 40 41 42 43 44

ADJACENCIES LIST

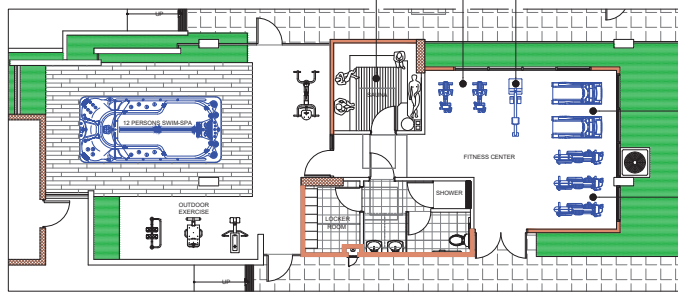
NO.	DESCRIPTION	LOCATION	NOTE
1	EXTERIOR	BEARING CL.	OPEN TO THE SKY
2	EXTERIOR FINISH EQUIPMENT	BEARING CL.	OPEN TO THE SKY
3	EXTERIOR FINISH EQUIPMENT	BEARING CL.	OPEN TO THE SKY
4	EXTERIOR FINISH EQUIPMENT	BEARING CL.	OPEN TO THE SKY
5	EXTERIOR FINISH EQUIPMENT	BEARING CL.	OPEN TO THE SKY
6	EXTERIOR FINISH EQUIPMENT	BEARING CL.	OPEN TO THE SKY
7	EXTERIOR FINISH EQUIPMENT	BEARING CL.	OPEN TO THE SKY
8	EXTERIOR FINISH EQUIPMENT	BEARING CL.	OPEN TO THE SKY
9	EXTERIOR FINISH EQUIPMENT	BEARING CL.	OPEN TO THE SKY
10	EXTERIOR FINISH EQUIPMENT	BEARING CL.	OPEN TO THE SKY
11	EXTERIOR FINISH EQUIPMENT	BEARING CL.	OPEN TO THE SKY
12	EXTERIOR FINISH EQUIPMENT	BEARING CL.	OPEN TO THE SKY
13	EXTERIOR FINISH EQUIPMENT	BEARING CL.	OPEN TO THE SKY
14	EXTERIOR FINISH EQUIPMENT	BEARING CL.	OPEN TO THE SKY
15	EXTERIOR FINISH EQUIPMENT	BEARING CL.	OPEN TO THE SKY
16	EXTERIOR FINISH EQUIPMENT	BEARING CL.	OPEN TO THE SKY
17	EXTERIOR FINISH EQUIPMENT	BEARING CL.	OPEN TO THE SKY
18	EXTERIOR FINISH EQUIPMENT	BEARING CL.	OPEN TO THE SKY
19	EXTERIOR FINISH EQUIPMENT	BEARING CL.	OPEN TO THE SKY
20	EXTERIOR FINISH EQUIPMENT	BEARING CL.	OPEN TO THE SKY
21	EXTERIOR FINISH EQUIPMENT	BEARING CL.	OPEN TO THE SKY
22	EXTERIOR FINISH EQUIPMENT	BEARING CL.	OPEN TO THE SKY
23	EXTERIOR FINISH EQUIPMENT	BEARING CL.	OPEN TO THE SKY
24	EXTERIOR FINISH EQUIPMENT	BEARING CL.	OPEN TO THE SKY
25	EXTERIOR FINISH EQUIPMENT	BEARING CL.	OPEN TO THE SKY
26	EXTERIOR FINISH EQUIPMENT	BEARING CL.	OPEN TO THE SKY
27	EXTERIOR FINISH EQUIPMENT	BEARING CL.	OPEN TO THE SKY
28	EXTERIOR FINISH EQUIPMENT	BEARING CL.	OPEN TO THE SKY
29	EXTERIOR FINISH EQUIPMENT	BEARING CL.	OPEN TO THE SKY
30	EXTERIOR FINISH EQUIPMENT	BEARING CL.	OPEN TO THE SKY
31	EXTERIOR FINISH EQUIPMENT	BEARING CL.	OPEN TO THE SKY
32	EXTERIOR FINISH EQUIPMENT	BEARING CL.	OPEN TO THE SKY
33	EXTERIOR FINISH EQUIPMENT	BEARING CL.	OPEN TO THE SKY
34	EXTERIOR FINISH EQUIPMENT	BEARING CL.	OPEN TO THE SKY
35	EXTERIOR FINISH EQUIPMENT	BEARING CL.	OPEN TO THE SKY
36	EXTERIOR FINISH EQUIPMENT	BEARING CL.	OPEN TO THE SKY
37	EXTERIOR FINISH EQUIPMENT	BEARING CL.	OPEN TO THE SKY
38	EXTERIOR FINISH EQUIPMENT	BEARING CL.	OPEN TO THE SKY
39	EXTERIOR FINISH EQUIPMENT	BEARING CL.	OPEN TO THE SKY
40	EXTERIOR FINISH EQUIPMENT	BEARING CL.	OPEN TO THE SKY
41	EXTERIOR FINISH EQUIPMENT	BEARING CL.	OPEN TO THE SKY
42	EXTERIOR FINISH EQUIPMENT	BEARING CL.	OPEN TO THE SKY
43	EXTERIOR FINISH EQUIPMENT	BEARING CL.	OPEN TO THE SKY
44	EXTERIOR FINISH EQUIPMENT	BEARING CL.	OPEN TO THE SKY



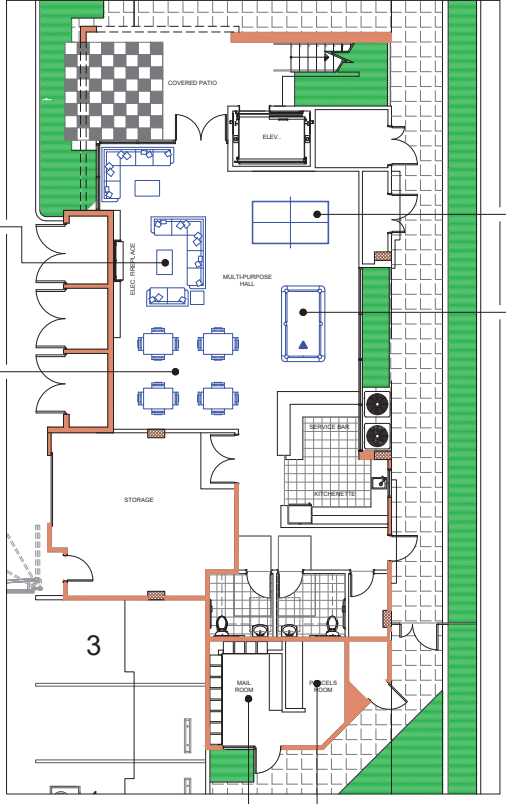
4 LAUNDRY ROOM (BUILDING-B)
SCALE: 1/4" = 1'-0"



3 LAUNDRY ROOM (BUILDING-A)
SCALE: 1/4" = 1'-0"



2 FITNESS CENTER (BUILDING-A)
SCALE: 1/4" = 1'-0"



1 MULTI-PURPOSE HALL (BUILDING-A)
SCALE: 1/4" = 1'-0"



BLIVE GROUP
8001 MAIN ST. | STANTON, CA 95757 | TEL: 520-290-0401

INDOOR AMENITIES

OWNER NAME & ADDRESS
BLIVE GROUP
8001 MAIN ST. | STANTON, CA 95757

PROJECT NAME & ADDRESS
BLIVE WEST BENTLEY LIVING
CORONAL, CA 92626

REVISIONS

NO.	DESCRIPTION	DATE
1	ISSUED FOR PERMITS	07-19-22
2	REVISED	07-11-22

DESIGNED BY
BLIVE GROUP

REVIEWED BY
BLIVE GROUP

PROJECT NUMBER
71000-19

SCALE
AS SHOWN

DATE
07-19-22

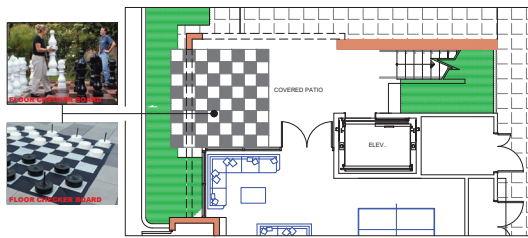
PROJECT NAME & ADDRESS
BLIVE WEST BENTLEY LIVING
CORONAL, CA 92626

INDOOR AMENITIES

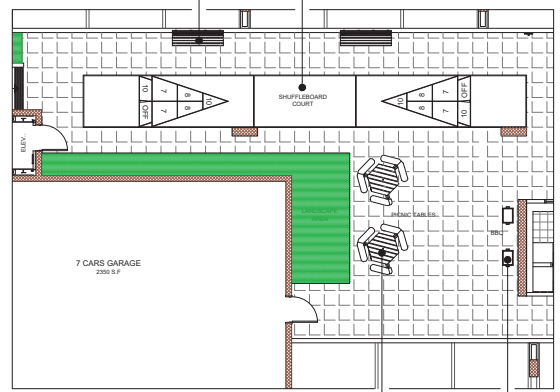
A01.3

EXHIBIT 5

01 02 03 04 05 06 07 08 09 10 11 12 13 14 15 16 17 18 19 20 21 22 23 24 25 26 27 28 29 30 31 32 33 34 35 36 37 38 39 40 41 42 43 44



2 | OUTDOOR GIANT FLOOR CHECKER BOARD (BUILDING-A)
 (B) SCALE: 1/4" = 1'-0"

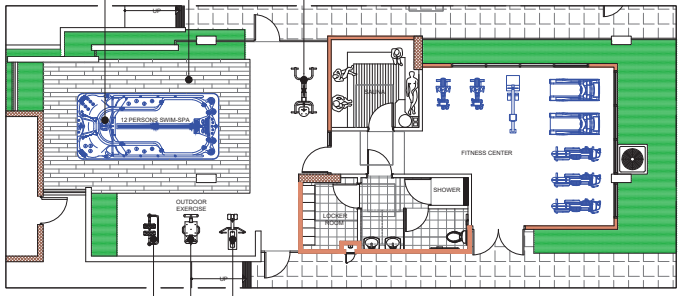
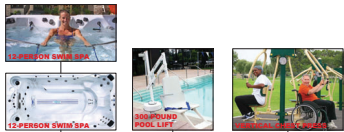


1 | OUTDOOR SHUFFLEBOARD COURT (BUILDING-B)
 (B) SCALE: 1/4" = 1'-0"



AMENITIES LIST

NO.	DESCRIPTION	LOCATION	NOTE
1	12 PERSON SWIM SPA	BUILDING A	OPENS TO THE SKY
2	12 PERSON SWIM SPA	BUILDING A	OPENS TO THE SKY
3	12 PERSON SWIM SPA	BUILDING A	OPENS TO THE SKY
4	12 PERSON SWIM SPA	BUILDING A	OPENS TO THE SKY
5	12 PERSON SWIM SPA	BUILDING A	OPENS TO THE SKY
6	12 PERSON SWIM SPA	BUILDING A	OPENS TO THE SKY
7	12 PERSON SWIM SPA	BUILDING A	OPENS TO THE SKY
8	12 PERSON SWIM SPA	BUILDING A	OPENS TO THE SKY
9	12 PERSON SWIM SPA	BUILDING A	OPENS TO THE SKY
10	12 PERSON SWIM SPA	BUILDING A	OPENS TO THE SKY
11	12 PERSON SWIM SPA	BUILDING A	OPENS TO THE SKY
12	12 PERSON SWIM SPA	BUILDING A	OPENS TO THE SKY
13	12 PERSON SWIM SPA	BUILDING A	OPENS TO THE SKY
14	12 PERSON SWIM SPA	BUILDING A	OPENS TO THE SKY
15	12 PERSON SWIM SPA	BUILDING A	OPENS TO THE SKY
16	12 PERSON SWIM SPA	BUILDING A	OPENS TO THE SKY
17	12 PERSON SWIM SPA	BUILDING A	OPENS TO THE SKY
18	12 PERSON SWIM SPA	BUILDING A	OPENS TO THE SKY
19	12 PERSON SWIM SPA	BUILDING A	OPENS TO THE SKY
20	12 PERSON SWIM SPA	BUILDING A	OPENS TO THE SKY
21	12 PERSON SWIM SPA	BUILDING A	OPENS TO THE SKY
22	12 PERSON SWIM SPA	BUILDING A	OPENS TO THE SKY
23	12 PERSON SWIM SPA	BUILDING A	OPENS TO THE SKY
24	12 PERSON SWIM SPA	BUILDING A	OPENS TO THE SKY
25	12 PERSON SWIM SPA	BUILDING A	OPENS TO THE SKY
26	12 PERSON SWIM SPA	BUILDING A	OPENS TO THE SKY
27	12 PERSON SWIM SPA	BUILDING A	OPENS TO THE SKY
28	12 PERSON SWIM SPA	BUILDING A	OPENS TO THE SKY
29	12 PERSON SWIM SPA	BUILDING A	OPENS TO THE SKY
30	12 PERSON SWIM SPA	BUILDING A	OPENS TO THE SKY
31	12 PERSON SWIM SPA	BUILDING A	OPENS TO THE SKY
32	12 PERSON SWIM SPA	BUILDING A	OPENS TO THE SKY
33	12 PERSON SWIM SPA	BUILDING A	OPENS TO THE SKY
34	12 PERSON SWIM SPA	BUILDING A	OPENS TO THE SKY
35	12 PERSON SWIM SPA	BUILDING A	OPENS TO THE SKY
36	12 PERSON SWIM SPA	BUILDING A	OPENS TO THE SKY
37	12 PERSON SWIM SPA	BUILDING A	OPENS TO THE SKY
38	12 PERSON SWIM SPA	BUILDING A	OPENS TO THE SKY
39	12 PERSON SWIM SPA	BUILDING A	OPENS TO THE SKY
40	12 PERSON SWIM SPA	BUILDING A	OPENS TO THE SKY
41	12 PERSON SWIM SPA	BUILDING A	OPENS TO THE SKY
42	12 PERSON SWIM SPA	BUILDING A	OPENS TO THE SKY
43	12 PERSON SWIM SPA	BUILDING A	OPENS TO THE SKY
44	12 PERSON SWIM SPA	BUILDING A	OPENS TO THE SKY



3 | OUTDOOR FITNESS CENTER (BUILDING-A)
 (B) SCALE: 1/4" = 1'-0"



BLIVE GROUP
 800 W. 11th Street, Santa Ana, CA 92701
 TEL: 626-290-0401

OWNER NAME & ADDRESS
 4000 W. 11th Street, Santa Ana, CA 92701

PROJECT NAME & ADDRESS
 BLIVE FIRST FLOOR PLAN
 CORONA, CA 92626

REVISIONS

NO.	DESCRIPTION	DATE
1	ISSUED FOR PERMIT	01-10-22
2	ISSUED FOR PERMIT	01-11-22

DESIGNED BY
 BLIVE GROUP

CHECKED BY
 BLIVE GROUP

SCALE
 AS SHOWN

PROJECT NUMBER
 71000-19

DATE PLOTTED
 01-11-22

OUTDOOR AMENITIES

A01.4