

110
99
C.A.

9 NUMBERED LOTS + LOT 'A', 'B', 'C' AND 'D'
ACREAGE IN NUMBERED LOTS: 7.706 ACRES
ACREAGE IN LETTERED LOTS: 3.778 ACRES
TOTAL ACREAGE: 11.484 AC.
ALL OF TENTATIVE TRACT MAP NO. 32584

IN THE CITY OF CORONA, COUNTY OF RIVERSIDE,
STATE OF CALIFORNIA

SHEET 2 OF 2 SHEETS

TRACT MAP NO. 32584

BEING A SUBDIVISION OF PARCELS 1 & 2 OF PARCEL MAP NO. 20810, AS SHOWN ON A MAP RECORDED IN BOOK 132,
PAGES 44-45 OF PARCEL MAPS, RECORDS OF RIVERSIDE COUNTY, CALIFORNIA.

MARK L. RAAB

RCE 29816

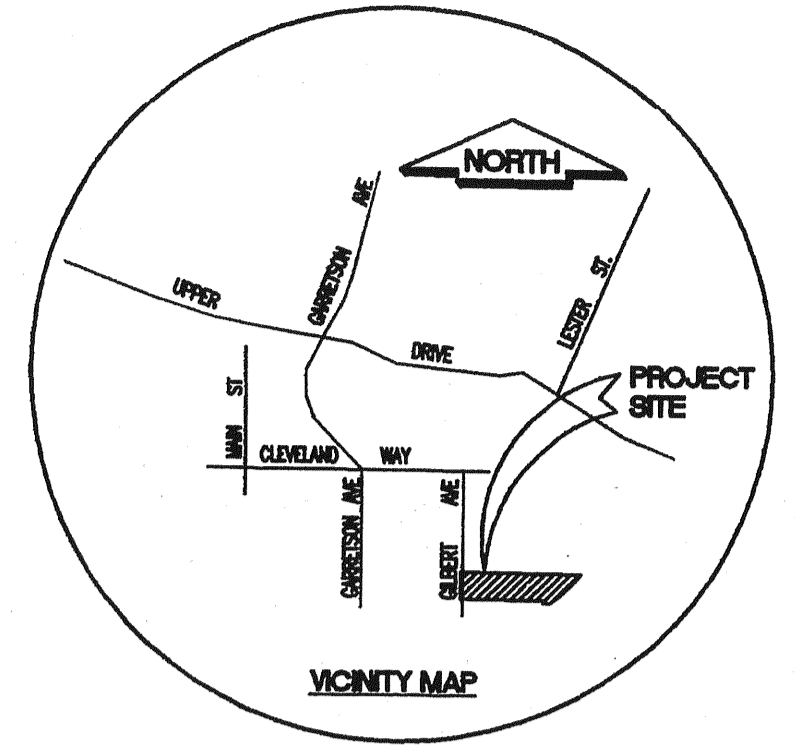
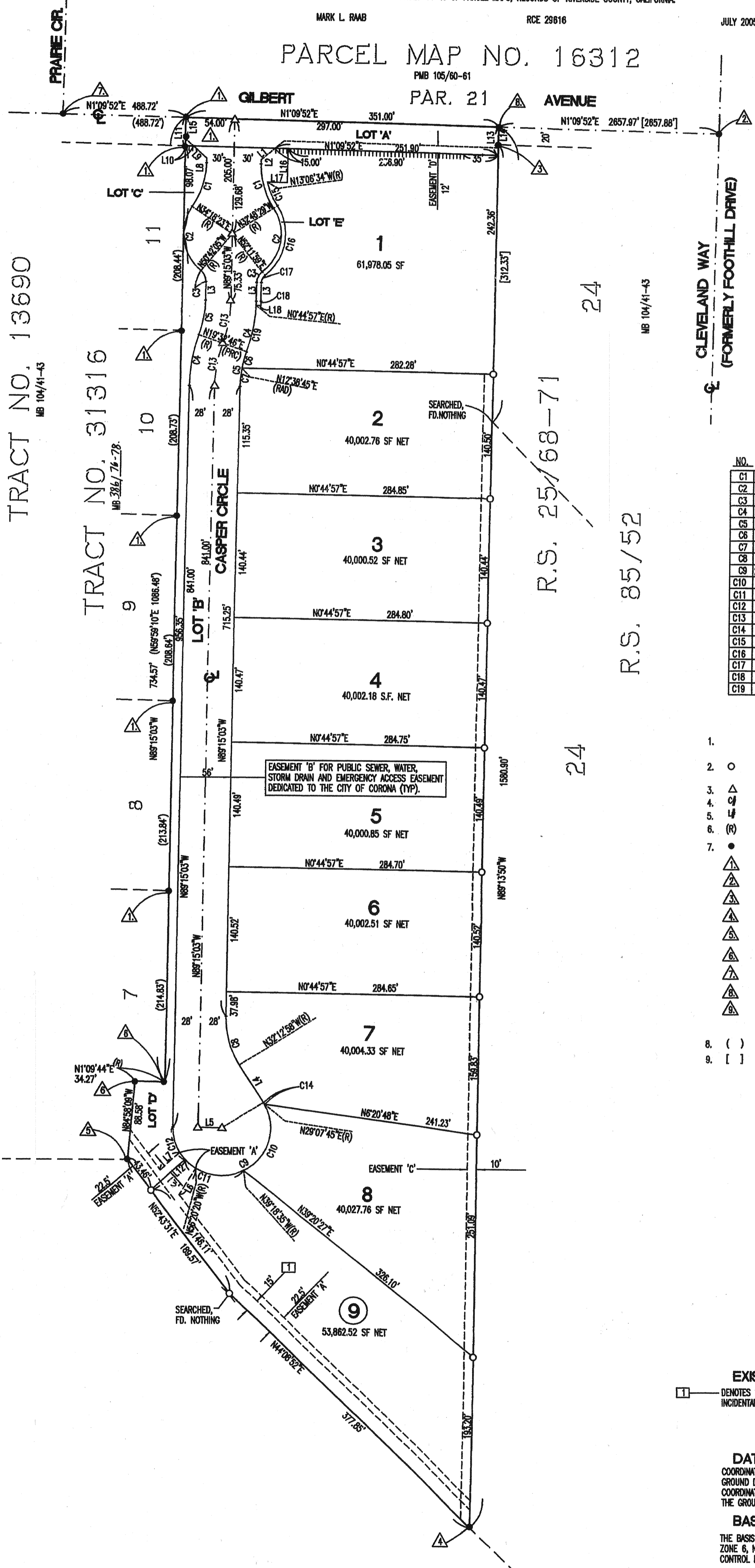
JULY 2005

PARCEL MAP NO. 16312

PMB 105/60-61

PAR. 21

GILBERT AVENUE



SCALE: 1"=80'

TRACT NO. 13690
MB 104/41-43

TRACT NO. 31316
MB 386/74-78

R.S. 25/68-71

R.S. 85/52

CURVE DATA

NO.	Δ	RADIUS	LENGTH	TANGENT	
C1		33.3326'	90.00'	52.71'	27.14'
C2		85.0028'	54.00'	80.12'	49.49'
C3		51.2702'	15.00'	13.47'	7.23'
C4		18.4749'	178.00'	58.40'	29.48'
C5		18.4749'	122.00'	40.02'	20.19'
C6		6.5401'	122.00'	14.69'	7.36'
C7		11.5348'	122.00'	25.33'	12.71'
C8		32.5755'	100.00'	57.54'	29.59'
C9		212.5755'	54.00'	200.72'	182.50'
C10		84.4125'	54.00'	79.82'	49.21'
C11		85.4705'	54.00'	80.85'	50.17'
C12		40.0332'	54.00'	37.76'	19.69'
C13		18.4749'	150.00'	49.21'	24.83'
C14		2.2553'	54.00'	2.29'	1.15'
C15		18.4155'	85.00'	29.22'	14.76'
C16		85.0028'	59.00'	87.54'	54.07'
C17		51.2702'	10.00'	8.98'	4.82'
C18		01.3126'	183.00'	4.87'	2.43'
C19		17.1349'	178.00'	53.53'	26.97'

LINE DATA

NO.	BEARING	DISTANCE
L1	N39°59'13"W	19.92'
L2	N89°15'03"W	4.75'
L3	N89°15'03"W	21.36'
L4	N57°47'02"E	50.00'
L5	N0°44'57"E	26.00'
L6	N57°02'52"W	30.23'
L7	N38°18'35"W	26.12'
L8	N89°15'03"W	5.40'
L9	N41°50'30"E	19.78'
L10	N01°59'32"E	9.09'
L11	N89°15'03"W	32.00'
L12	N38°18'35"W(R)	48.05'
L13	N89°13'50"W	32.00'
L14	N89°13'50"W	20.00'
L15	N89°15'03"W	22.00'
L16	N89°50'08"W	38.00'
L17	N00°44'57"E	22.34'
L18	N00°44'57"E	5.00'

MONUMENT NOTES AND LEGEND

- SET NAIL AND TAG RCE 29816 IN TOP OF CURB ON ALL SIDE PROPERTY LINE PROLONGATIONS.
- INDICATES SET NAIL AND TAG RCE 29816 IN FACE OF BLOCK WALL ON PROPERTY LINE PROLONGATION.
- INDICATES SET SPK AND TAG RCE 29816, FLUSH, UNLESS OTHERWISE SHOWN.
- DENOTES CURVE DATA SHOWN IN TABULAR FORM.
- DENOTES LINE DATA SHOWN IN TABULAR FORM.
- DENOTES RADIAL BEARING
- INDICATES FOUND MONUMENT AS NOTED BELOW:
 - FOUND 1" IP TAGGED LS 3745 PER TRACT NO. 31316, MB 386/74-78 TO BE SET.
 - FOUND 3/4" IP W/ PLUG LS 3018 PER PM 104/54-55; ACC. AS Δ INTERSECTION.
 - FD. 3/4" IP, TAG ILLEG PER RS 85/52
 - FD. 1" IP TAGGED RCE 862 PER RS 25/68-71; ACC. AS N.E. PROPERTY CORNER
 - FD. 3/4" IP TAGGED RCE 862, NO REF; ACC. AS S.E. PROPERTY CORNER
 - FD. 1" IP NO PLUG, TAG LS 3745 TO BE SET PER TRACT NO. 31316, MB 386/74-78.
 - FD. 3/4" IP TAGGED LS 3018 PER PMB 105/60-61; ACC. AS Δ INTER.
 - FD. 2" IP TAGGED LS 3338 PER TRACT NO. 31316, MB 386/74-78
 - FD. 1" IP TAGGED LS 3686 PER TRACT NO. 31316, MB 386/74-78; ON S'LY PROPERTY LINE, 2.00' EASTERLY.
- () DENOTES RECORD DATA PER TRACT NO. 31316, MB 386/74-78
- [] DENOTES RECORD DATA PER RS 85/52

EXISTING EASEMENT NOTES

- DENOTES 15' WIDE CITY OF CORONA EASEMENT FOR SANITARY SEWER, SLOPES AND INCIDENTAL PURPOSES PER DEED RECORDED 5/6/05 AS INST. # 2005-0362293, O.R.

DATUM STATEMENT

COORDINATES SHOWN HEREON ARE GRID. DISTANCES SHOWN HEREON ARE GROUND DISTANCES. GRID DISTANCES PER THE CALIFORNIA STATE PLANE COORDINATE SYSTEM, ZONE 6, NAD 83 MAY BE OBTAINED BY MULTIPLYING THE GROUND DISTANCE BY AN AVERAGE COMBINED FACTOR OF 0.99995699.

BASIS OF BEARINGS NOTE

THE BASIS OF BEARINGS FOR THIS SURVEY IS THE CALIFORNIA STATE PLANE COORDINATE SYSTEM, ZONE 6, NAD 83, AS DETERMINED LOCALLY BY THE LINE BETWEEN THE CITY OF CORONA GPS CONTROL POINTS "3015" AND "3017" AS BEING N14°05'39"W.

EXHIBIT 1