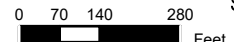


### Zone 5 Parcels and Zoning

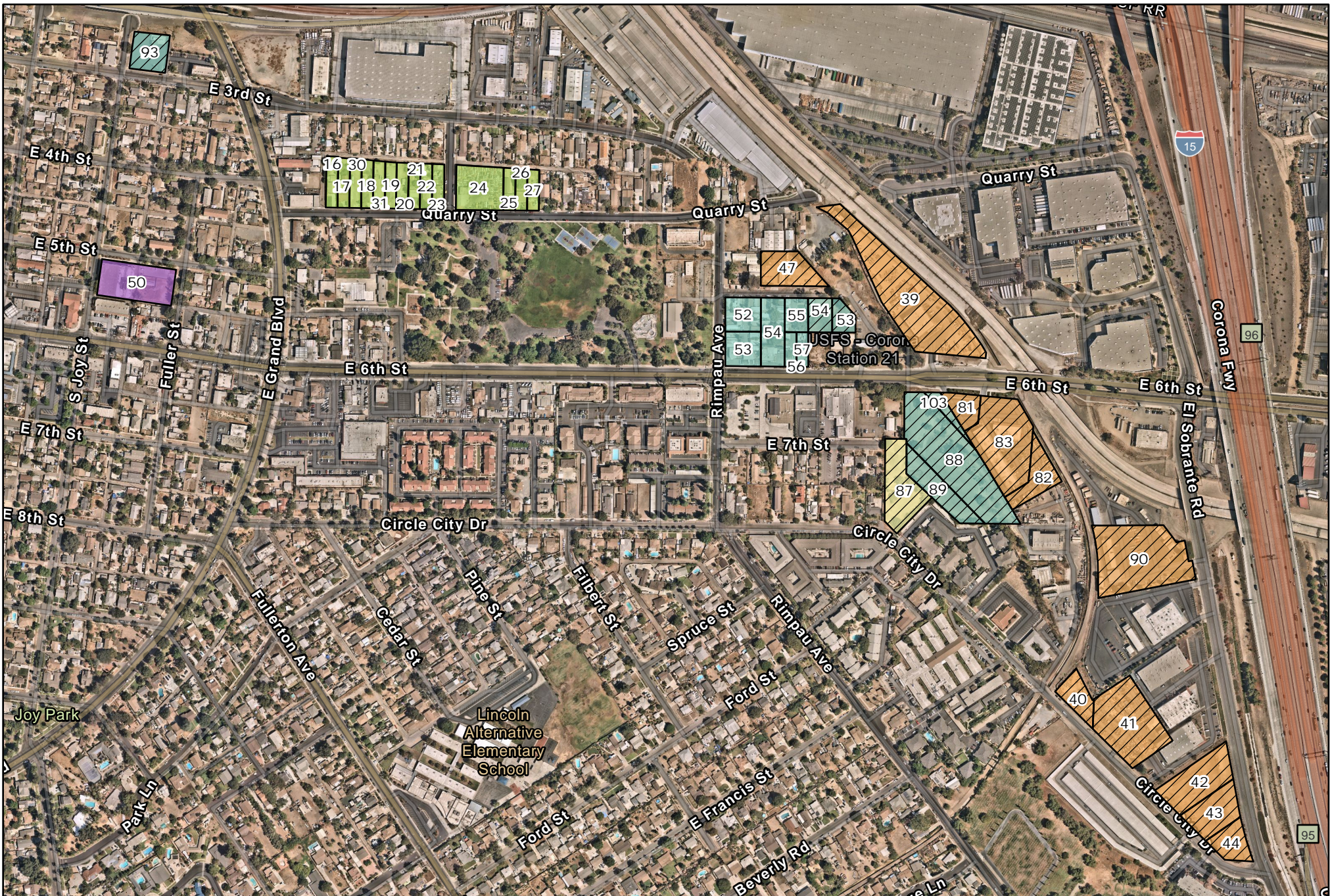


AHO Sites	Agriculture	Commercial/Office	General Industrial	Light Industrial	Mixed Use
Rezone Sites	Commercial	Flood Control	High Density Residential	Low Density Residential	Quasi Public

# EXHIBIT 9



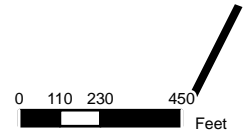
Path: \\c:\projects\maya's Projects\Zone Area Maps\Zone Area Maps\Zone Area Map.aprx



### Zone 5 Parcels and Zoning



Parcel Type		Zone Type									
	AHO Sites		Agriculture		Commercial/Office		General Industrial		Light Industrial		Mixed Use
	Rezone Sites		Commercial		Flood Control		High Density Residential		Low Density Residential		Quasi Public



Zone 5  
Affordable Housing Overlay Zone Parcels

ID No.	Site Address or Street	Assessor's Parcel Number (APN)	Acres	General Plan Land Use Designation	Proposed General Plan	Current Zoning	Proposed Zoning	Application Type
39	1201 E 6th Street	115690013	2.96	MU2	--	BP	BP (AHO)	SPA2022-0003
40	Circle City Drive	111290040	0.44	MU2	--	M1	M1 (AHO)	CZ2022-0003
41	Circle City Drive	111290039	1.71	MU2	--	M1	M1 (AHO)	CZ2022-0003
42	Circle City Drive	111290021	1.08	MU2	--	M1	M1 (AHO)	CZ2022-0003
43	Circle City Drive	111290022	0.77	MU2	--	M1	M1 (AHO)	CZ2022-0003
44	Circle City Drive	111290023	0.47	MU2	--	M1	M1 (AHO)	CZ2022-0003
47	E 5th Street	117331006	0.74	MU2	--	BP	BP (AHO)	SPA2022-0003
53	E 6th Street	117332015	0.27	MU2	--	GC	GC (AHO)	SPA2022-0003
54	E 6th Street	117332016	0.33	MU2	--	GC	GC (AHO)	SPA2022-0003
55	E Blaine Street	119311019	0.27	MU1	--	MU	MU (AHO)	SPA2022-0003
56	E Blaine Street	119311018	0.17	MU1	--	MU	MU (AHO)	SPA2022-0003
57	E Blaine Street	119311017	0.07	MU1	--	MU	MU (AHO)	SPA2022-0003
58	E Blaine Street	119311016	0.07	MU1	--	MU	MU (AHO)	SPA2022-0003
59	E Blaine Street	119311043	0.10	MU1	--	MU	MU (AHO)	SPA2022-0003
60	E Blaine Street	119311042	0.10	MU1	--	MU	MU (AHO)	SPA2022-0003
61	E Blaine Street	119311041	0.10	MU1	--	MU	MU (AHO)	SPA2022-0003
62	100 E Harrison Street	119311025	1.09	MU1	--	MU	MU (AHO)	SPA2022-0003
63	E Blaine Street	119311015	0.07	MU1	--	MU	MU (AHO)	SPA2022-0003
64	E Blaine Street	119311014	0.07	MU1	--	MU	MU (AHO)	SPA2022-0003

ID No.	Site Address or Street	Assessor's Parcel Number (APN)	Acres	General Plan Land Use Designation	Proposed General Plan	Current Zoning	Proposed Zoning	Application Type
65	E Blaine Street	119311013	0.04	MU1	--	MU	MU (AHO)	SPA2022-0003
66	320 E Harrison Street	119311005	0.53	MU1	--	MU	MU (AHO)	SPA2022-0003
67	280 E Harrison Street	119311004	0.35	MU1	--	MU	MU (AHO)	SPA2022-0003
68	240 E Harrison Street	119311003	0.27	MU1	--	MU	MU (AHO)	SPA2022-0003
69	122 E Harrison Street	119311002	0.97	MU1	--	MU	MU (AHO)	SPA2022-0003
70	E Blaine Street	119311040	0.20	MU1	--	MU	MU (AHO)	SPA2022-0003
81	1210 E 6th Street	115080002	0.38	MU2	--	BP	BP (AHO)	SPA2022-0003
82	1210 E 6th Street	115080041	0.62	MU2	--	BP	BP (AHO)	SPA2022-0003
83	1210 E 6 <sup>th</sup> Street	115080012	1.82	MU2	--	BP	BP(AHO)	SPA2022-0003
87	1203 Circle City Drive	111280005	1.05	HDR	UDR	R3	R3 (AHO)	SPA2022-0003 GPA2022-0002
88	1154 E 6th Street	111280001	2.13	MU2	--	GC	GC (AHO)	SPA2022-0003
89	6th Street	111280004	0.90	MU2	--	GC	GC (AHO)	SPA2022-0003
90	n/a	111290036	2.31	MU2	--	M1	M1 (AHO)	SPA2022-0003
93	E 3rd Street	117122003	0.54	MU1	--	TC	TC (AHO)	SPA2022-0003
96	400 E Rincon Street	119280070	3.00	LI	MU1	BP	BP (AHO)	SPA2022-0003 GPA2022-0002
97	400 E Rincon Street	119280071	3.00	LI	MU1	BP	BP (AHO)	SPA2022-0003 GPA2022-0002
101	160 E Rincon Street	119280044	1.92	GC	MU1	CR	CR(AHO)	SPA2022-0003 GPA2022-0002

ID No.	Site Address or Street	Assessor's Parcel Number (APN)	Acres	General Plan Land Use Designation	Proposed General Plan	Current Zoning	Proposed Zoning	Application Type
102	250 E Rincon Street	119280068	1.14	LI	MU1	BP	BP(AHO)	SPA2022-0003 GPA2022-0002
103	E. Sixth St.	115080001	0.27	MU2	--	BP	BP(AHO)	SPA2022-0003
104	170 E. Rincon	119280045	1.65	GC	MU1	CR	CR(AHO)	SPA2022-0003 GPA2022-0002

### Residential Rezone Parcels

ID No.	Site Address or Street	Assessor's Parcel Number (APN)	Acres	General Plan Land Use Designation	Proposed General Plan	Current Zoning	Proposed Zoning	Application Type
16	801 Quarry Street	117281007	0.25	LDR	MDR	SF	R2	SPA2022-0003 GPA2022-0002
17	805 Quarry Street	117281008	0.24	LDR	MDR	SF	R2	SPA2022-0003 GPA2022-0002
18	901 Quarry Street	117281010	0.23	LDR	MDR	SF	R2	SPA2022-0003 GPA2022-0002
19	907 Quarry Street	117281012	0.21	LDR	MDR	SF	R2	SPA2022-0003 GPA2022-0002
20	911 Quarry Street	117281013	0.22	LDR	MDR	SF	R2	SPA2022-0003 GPA2022-0002
21	915 Quarry Street	117281014	0.23	LDR	MDR	SF	R2	SPA2022-0003 GPA2022-0002
22	919 Quarry Street	117281015	0.22	LDR	MDR	SF	R2	SPA2022-0003 GPA2022-0002
23	923 Quarry Street	117281016	0.22	LDR	MDR	SF	R2	SPA2022-0003 GPA2022-0002
24	1001 Quarry Street	117282005	0.84	LDR	MDR	SF	R2	SPA2022-0003 GPA2022-0002
25	1019 Quarry Street	117290019	0.20	LDR	MDR	SF	R2	SPA2022-0003 GPA2022-0002

ID No.	Site Address or Street	Assessor's Parcel Number (APN)	Acres	General Plan Land Use Designation	Proposed General Plan	Current Zoning	Proposed Zoning	Application Type
26	1023 Quarry Street	117290020	0.20	LDR	MDR	SF	R2	SPA2022-0003 GPA2022-0002
27	1025 Quarry Street	117290021	0.20	LDR	MDR	SF	R2	SPA2022-0003 GPA2022-0002
30	Quarry Street	117281009	0.24	LDR	MDR	SF	R2	SPA2022-0003 GPA2022-0002
31	Quarry Street	117281011	0.23	LDR	MDR	SF	R2	SPA2022-0003 GPA2022-0002
34	44 E Grand Boulevard	117080003	0.18	GC	HDR	GB	MF	SPA2022-0003 GPA2022-0002
35	116 N Victoria Avenue	117080004	0.17	GC	HDR	GB	MF	SPA2022-0003 GPA2022-0002
36	110 N Victoria Avenue	117080005	0.18	GC	HDR	GB	MF	SPA2022-0003 GPA2022-0002
37	108 N Victoria Avenue	117080018	0.17	GC	HDR	GB	MF	SPA2022-0003 GPA2022-0002
38	115 N Victoria Avenue	117080009	0.21	GC	HDR	GB	MF	SPA2022-0003 GPA2022-0002
39	111 N Victoria Avenue	117080022	0.16	GC	HDR	GB	MF	SPA2022-0003 GPA2022-0002
50	551 S Joy Street	117165020	0.52	MU1	--	RO	MF	SPA2022-0003 GPA2022-0002
52	1108 E 5th Street	117332005	0.5	MU2	MU1	GC	MF	SPA2022-0003 GPA2022-0002
53	6th Street	117332006	0.5	MU2	MU1	GC	MF	SPA2022-0003 GPA2022-0002
54	1111 E 6th Street	117332004	0.67	MU2	MU1	GC	MF	SPA2022-0003 GPA2022-0002
55	5th Street	117332003	0.32	MU2	MU1	GC	MF	SPA2022-0003 GPA2022-0002
56	6th Street	117332007	0.17	MU2	MU1	GC	MF	SPA2022-0003 GPA2022-0002
57	6th Street	117332008	0.17	MU2	MU1	GC	MF	SPA2022-0003 GPA2022-0002

General Plan Legend		Zoning Legend	
GC	General Commercial	AHO	Affordable Housing Overlay
LDR	Low Density Residential 3 to 6 units per acre	SF	Single Family Residential
MDR	Medium Density Residential 6 to 15 units per acre	MF	Multiple Family
HDR	High Density Residential 15-36 units per acre	R-2	Low Density Multiple Family Residential
UDR	Urban Density Residential 36-60 units per acre	R3	Multiple Family Residential
MU1	Mixed Use 1 Commercial/Residential	GC	General Commercial
MU2	Mixed Use 2 Commercial/Industrial	CR	Commercial Retail
LI	Light Industry	TC	Transitional Commercial
		GB	Gateway Business
		BP	Business Park
		RO	Residential Office
		M1	Light Manufacturing
		C3	General Commercial
		MU	Mixed Use Commercial/Residential