

# Corona Trails Masterplan Phase II



Parks & Recreation Commission

City of Corona | 5/09/2023

**alta**

# PROJECT BACKGROUND



- 2019 Trails Master Inventory – Collect and Catalogue
- 2021 Trails Master Plan, Phase 1 – Concepts and Standards
- 2022 Trails Master Plan, Phase 2 – Refine and Prioritize

## VISION & GOALS

- *Vision: The Trails Master Plan will improve connectivity to local destinations, close gaps in our trail system and increase safety and accessibility to open spaces.*
- Goals:
  - Making Corona the City of Trails
  - Preserving & Improving Trail Access
  - Accommodating Needs of Various Trail Users & Stakeholders
  - Proposed Trail Analysis & Prioritization
  - Standards, Maps, & Implementation
  - Partner Jurisdiction Coordination



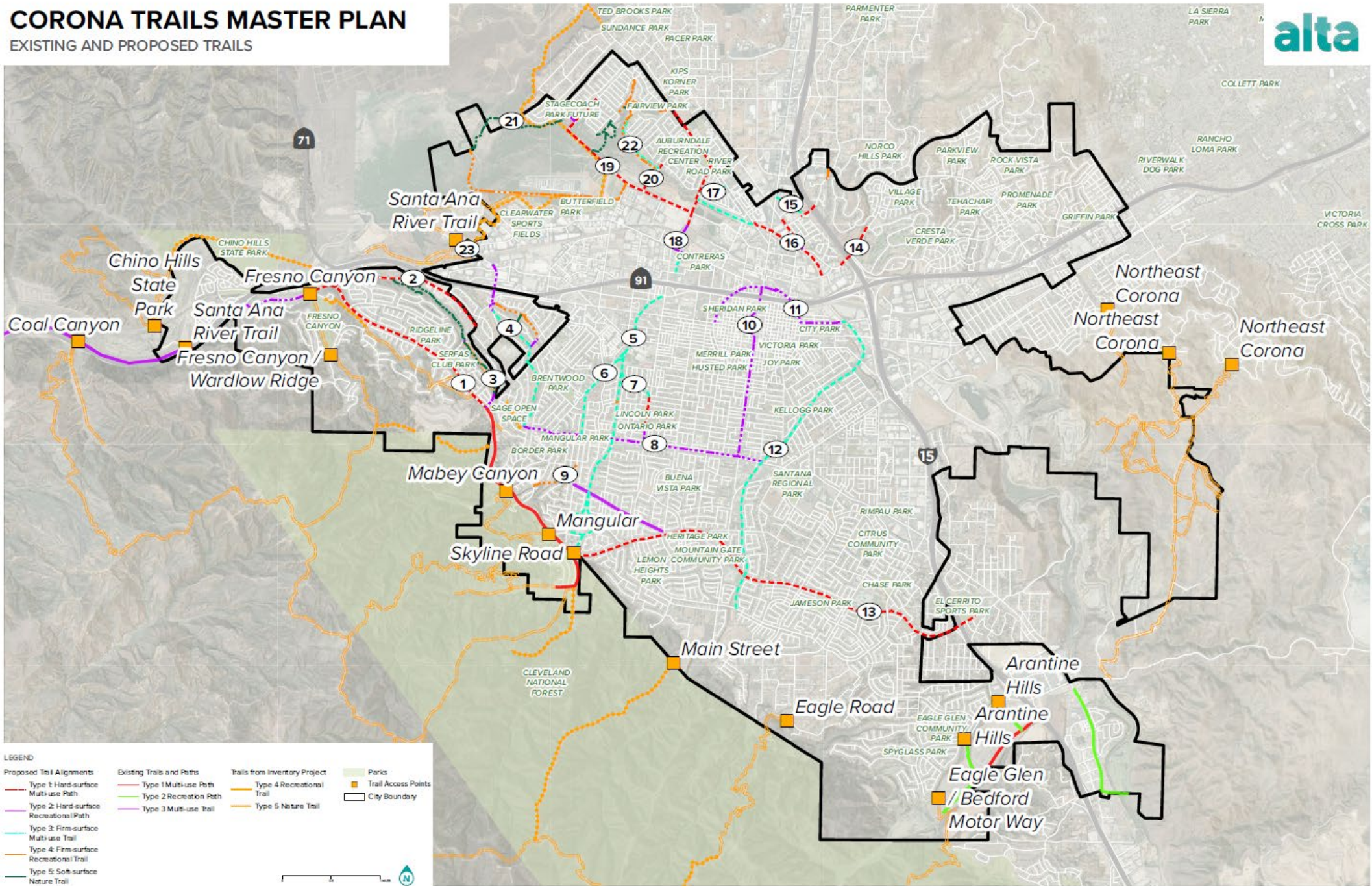
# CURRENT STATE OF TRAILS & OPPORTUNITIES ANALYSIS

- Trails Master Inventory
- Trails Master Plan Phase 1
- Adjacent / Previous Plans
- Existing and Proposed Trails
- Like Cities Research
- Trail Prioritization
- Impact Analysis



# CORONA TRAILS MASTER PLAN

EXISTING AND PROPOSED TRAILS

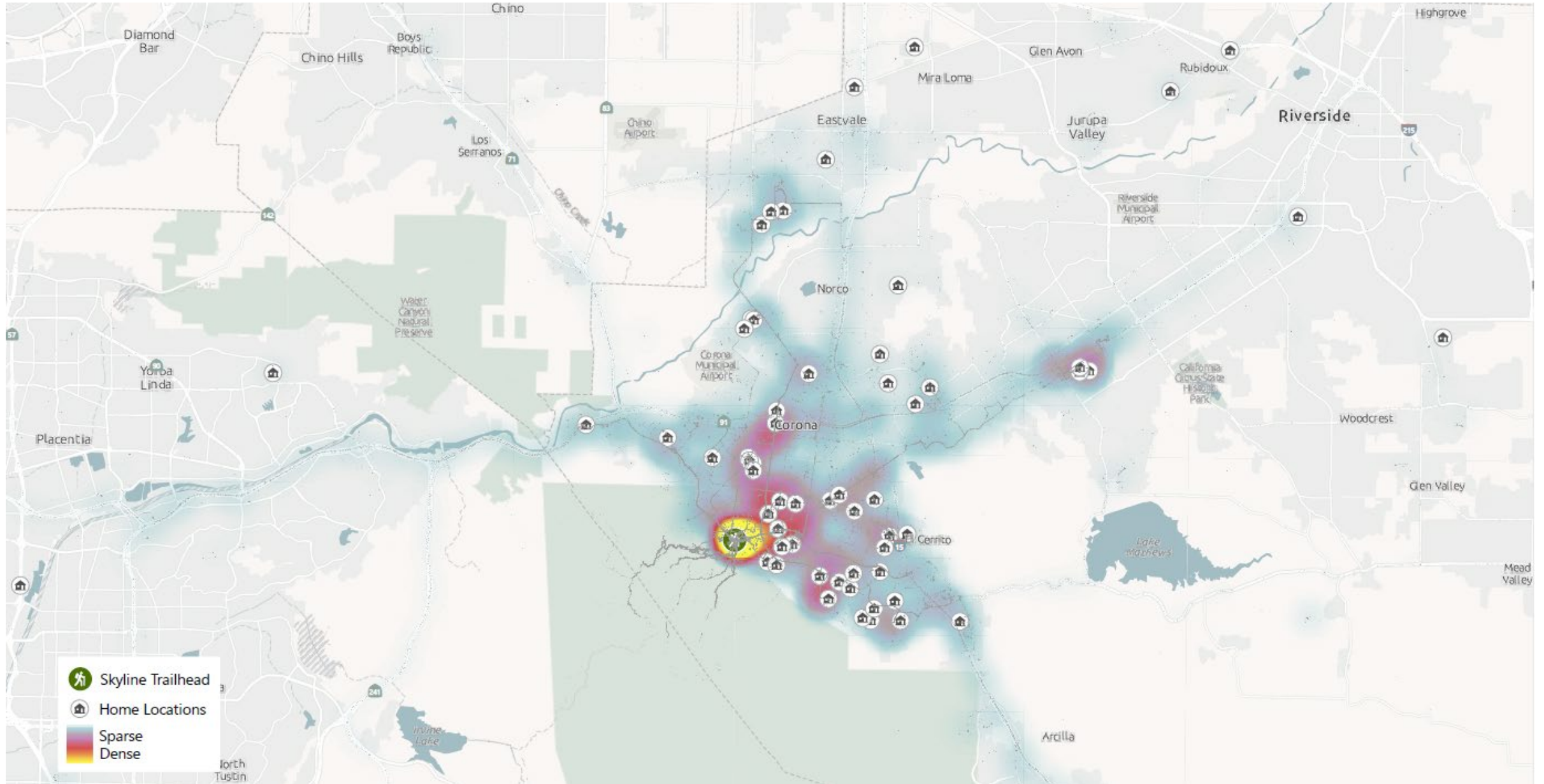


**LEGEND**

|  |                                  |                                      |                     |
|--|----------------------------------|--------------------------------------|---------------------|
| <b>Proposed Trail Alignments</b>       | <b>Existing Trails and Paths</b> | <b>Trails from Inventory Project</b> | <b>Parks</b>        |
| Type 1 Hard-surface Multi-use Path     | Type 1 Multi-use Path            | Type 4 Recreational Trail            | Trail Access Points |
| Type 2 Hard-surface Recreational Path  | Type 2 Recreation Path           | Type 5 Nature Trail                  | City Boundary       |
| Type 3 Firm-surface Multi-use Trail    | Type 3 Multi-use Trail           |                                      |                     |
| Type 4 Firm-surface Recreational Trail |                                  |                                      |                     |
| Type 5 Soft-surface Nature Trail       |                                  |                                      |                     |

Scale: 0 to 1 mile. North arrow pointing up.

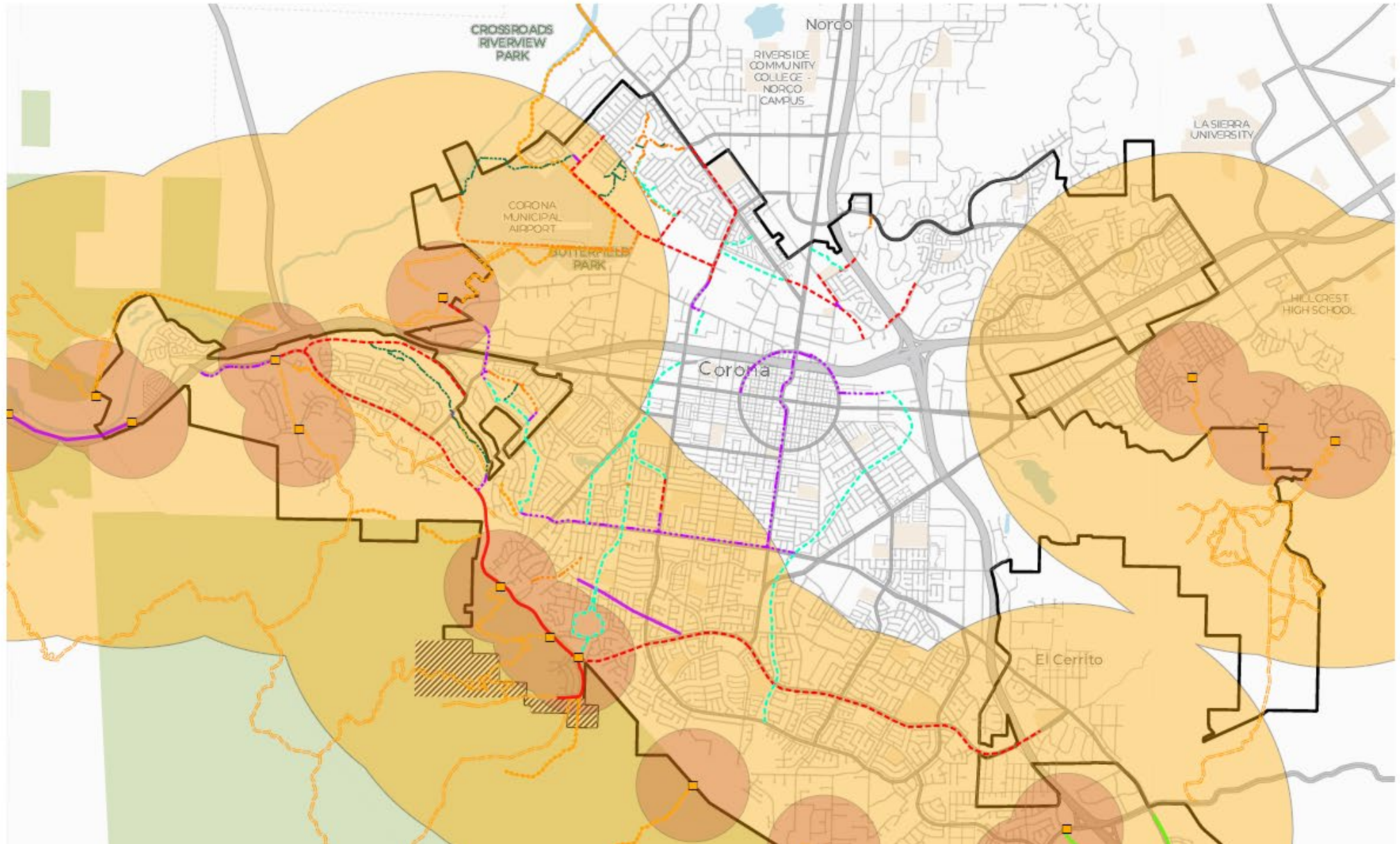
# ORIGIN & DESTINATION ANALYSIS



# ACCESS MAPPING

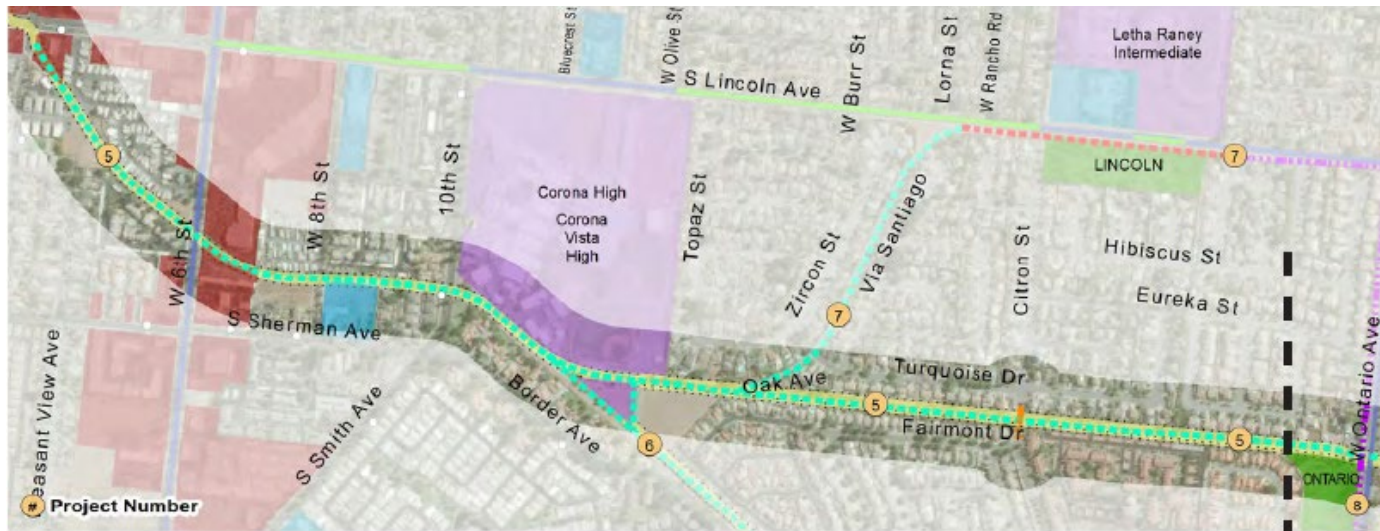
## CURRENT STATE OF TRAILS COVERAGE GAP ANALYSIS

- BIKESHED/WALKSHED**
- Trail Access Points
- Proposed Trail Alignments**
- Type 1: Hard-surface Multi-use Path
  - Type 2: Hard-surface Recreational Path
  - Type 3: Firm-surface Multi-use Trail
  - Type 4: Firm-surface Recreational Trail
  - Type 5: Soft-surface Nature Trail
- Existing Trails and Paths type**
- Type 1 Multi-use Path
  - Type 2 Recreation Path
  - Type 3 Multi-use Trail
- Trails from Inventory Project**
- Type 4 Recreational Trail
  - Type 5 Nature Trail
- .5 Mile Trailhead Buffer
- 2 Mile Trailhead Buffer
- Skyline Property
- Corona Boundary

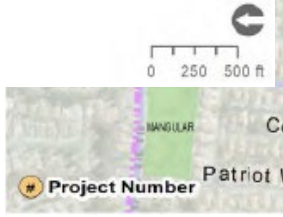


# #5 Sixth Street to Skyline Multi-use Trail Connection

- This trail again crosses much of the city and thus provides a meaningful connection for many communities in the area. This trail also connects with other proposed trails and thus, would serve as an important path



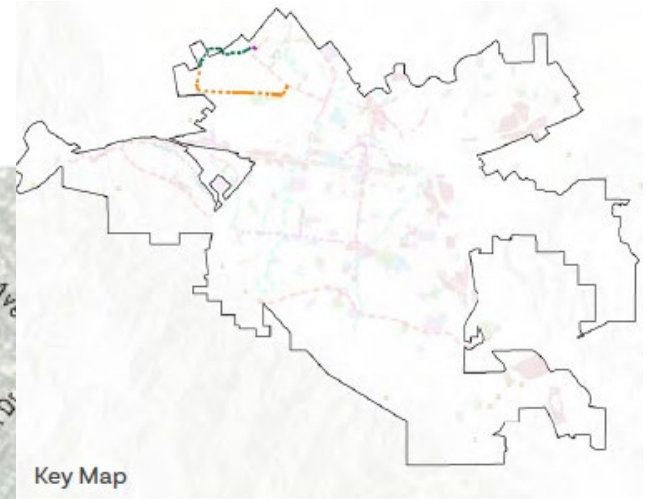
| Proposed Trail Alignments                   | Existing Bike Facilities | Destinations & Connections    |
|---|--------------------------|-------------------------------|
| --- Type 1: Hard-surface Multi-use Path     | --- Class 2              | ○ Bus Stop                    |
| --- Type 2: Hard-surface Recreational Path  | --- Class 3              | ■ Park                        |
| --- Type 3: Firm-surface Multi-use Trail    |                          | ■ School                      |
| --- Type 4: Firm-surface Recreational Trail |                          | ■ Public Facility             |
| --- Urban Trail                             |                          | ■ Commercial and Office       |
|   |                          | ■ RCFC Flood Control property |





# # 21-Butterfield Park Loop

- The Butterfield Park Trail Loop is an off-street trail that branches off of corridor 18 along Rincon Street and runs along the south end of the Corona Municipal Airport along Butterfield Drive.



### Proposed Trail Alignments

- Type 1: Hard-surface Multi-use Path
- Type 2: Hard-surface Recreational Path
- Type 3: Firm-surface Multi-use Trail
- Type 4: Firm-surface Recreational Trail
- Type 5: Soft-surface Nature Trail
- Urban Trail

### Existing Bike Facilities

- Class 2
- Class 3

### Destinations & Connections

- Park
- Public Facility

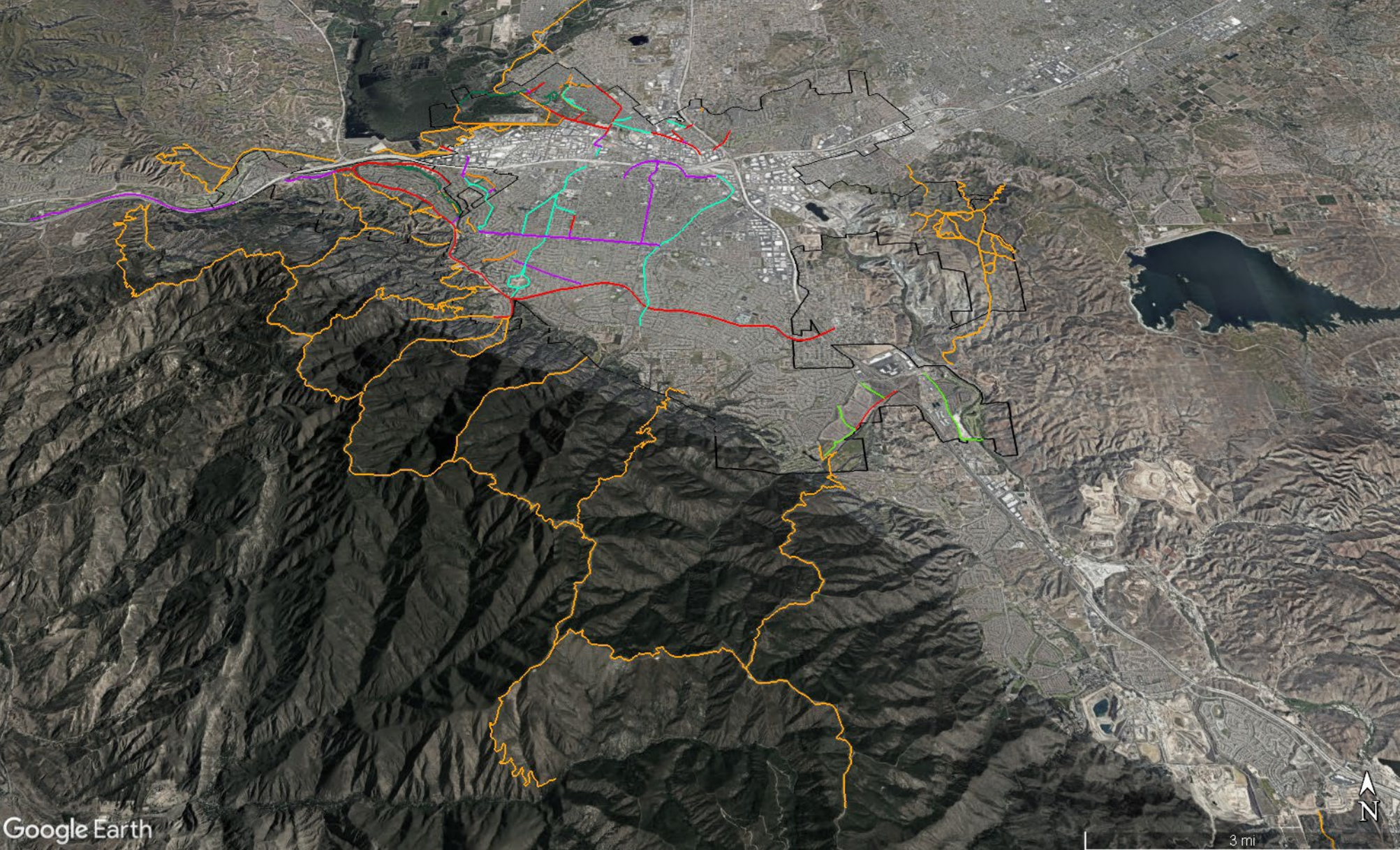


## OUTSIDE JURISDICTION COORDINATION

- Agency's Needs and Perspectives
- Property Lines
- Governing Plans
- Easements
- Maintenance
- Formal Access Points



# CLEVELAND NATIONAL FOREST



## ADDITIONAL AMENITIES / LIKE CITIES

- Altadena, Laguna Beach, Riverside, Santa Clarita, & Temecula
- Programs, parking, fees, facilities, volunteers, signage, etc.



Above: Other than the Eaton Canyon Nature Center and trailhead, most of the trailheads in Altadena do not have any amenities, such as this location which only has a signpost for the Altadena Crest Trail. Below: The Altadena Crest Trail is accessible from several trailheads in the community and has signage and maps at key points.



Despite the smaller size of the trailheads in Altadena, they are all well signed, at both the trailhead itself, and the streets leading to the trailhead.

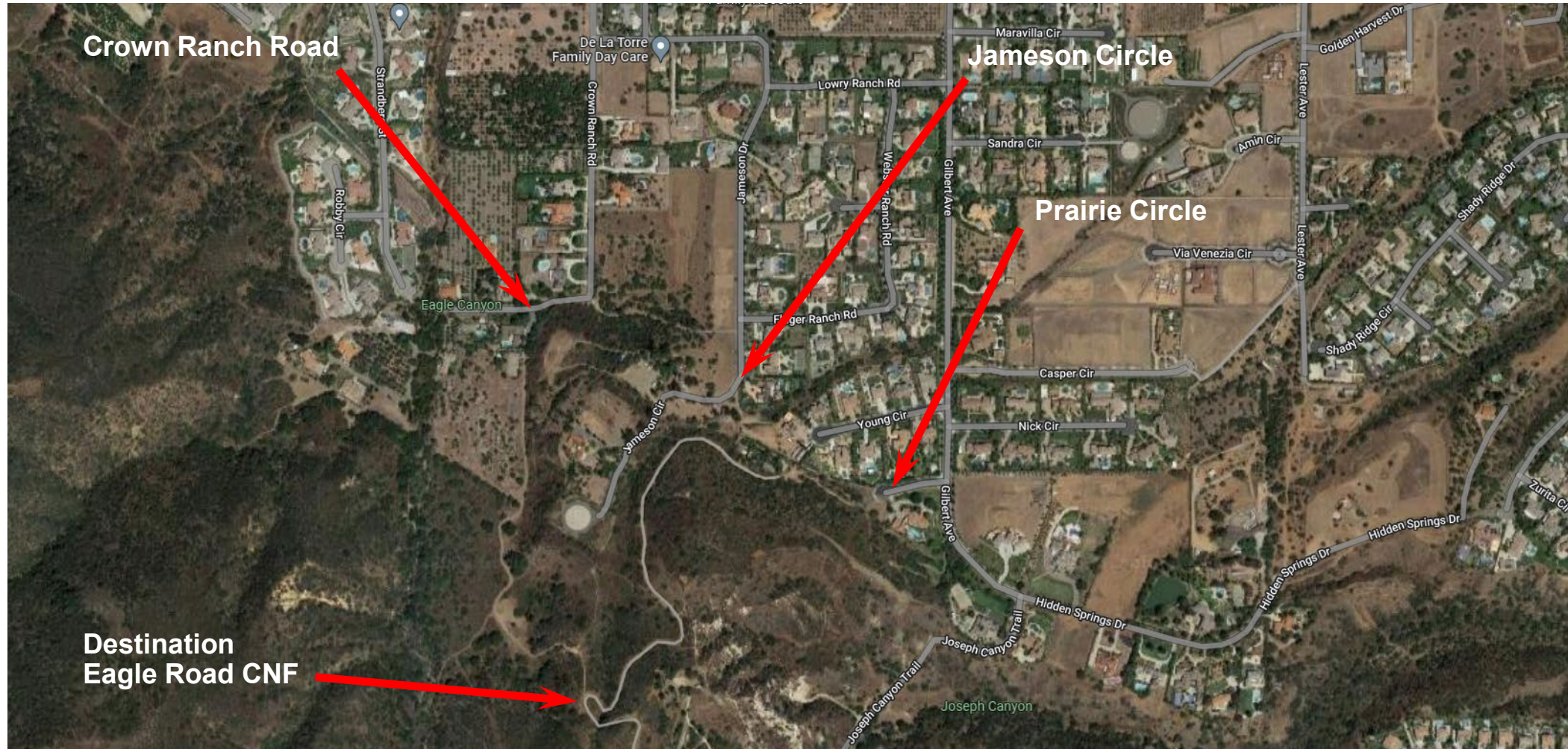
# TRAILS WORKING GROUP

- Bureaucratic Overlays
  - Ownership & access
  - Coordination & clarity
  - Diverging goals & capacity
- Skyline/Bedford/Eagle Access
  - Private Property / Outside Agency Ownership
  - TWG Priority Trails
- Trail Safety
  - Conflicts w/ cyclists, hikers, dogs, motorcycles, e-cycles, speeds...
  - Parking / evening safety
- Indigenous Lands
  - Acknowledgements
  - Education
- Trailheads General
  - Verify Phase 1 trailheads
  - Improved wayfinding
  - Maps, parking, water, restrooms...



TWG Meeting

# EAGLE ROAD (USFS)



# EAGLE ROAD (USFS)



# EAGLE ROAD (USFS)





# EAGLE ROAD (USFS)

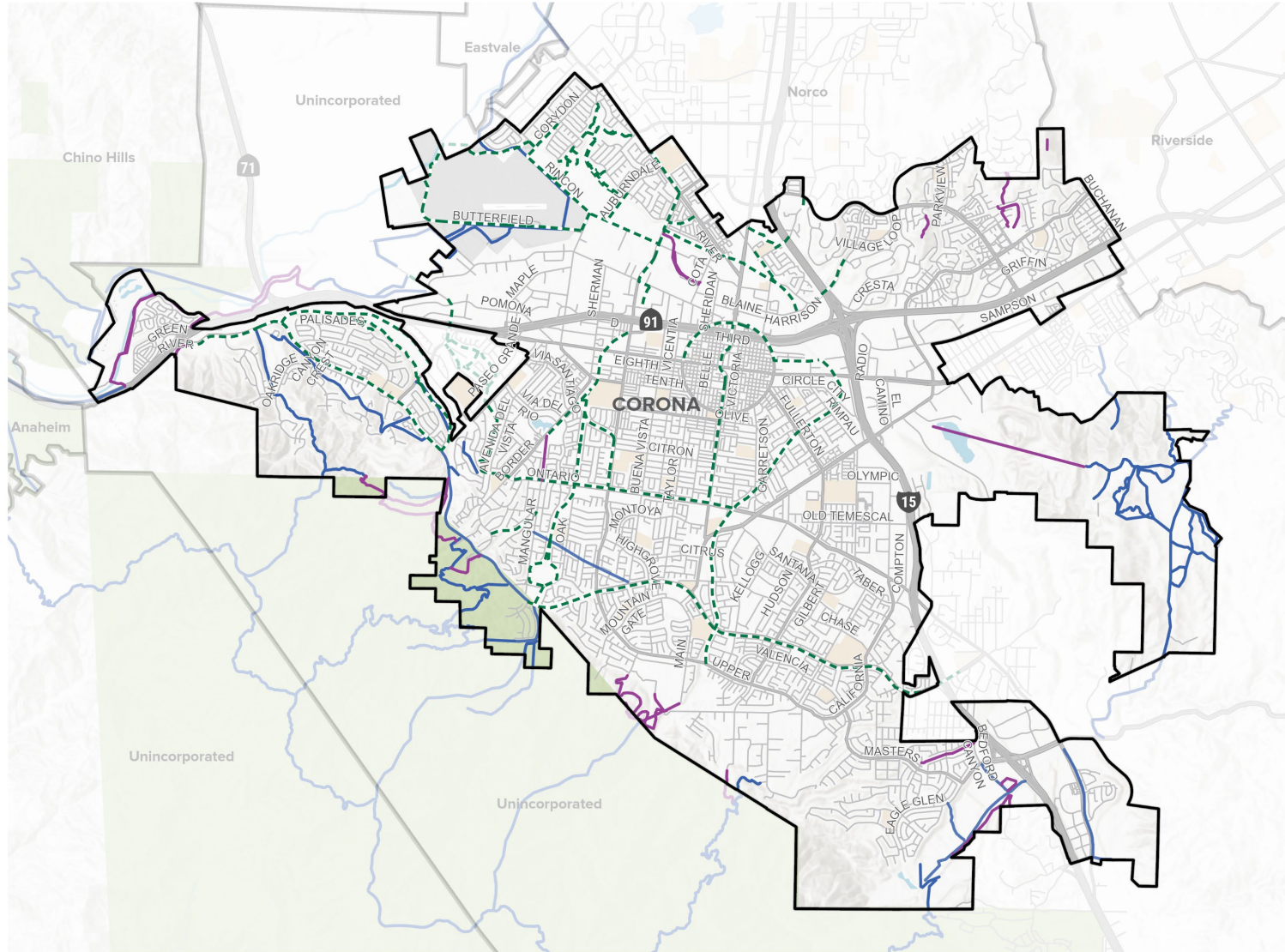


# PHASE II TRAILS

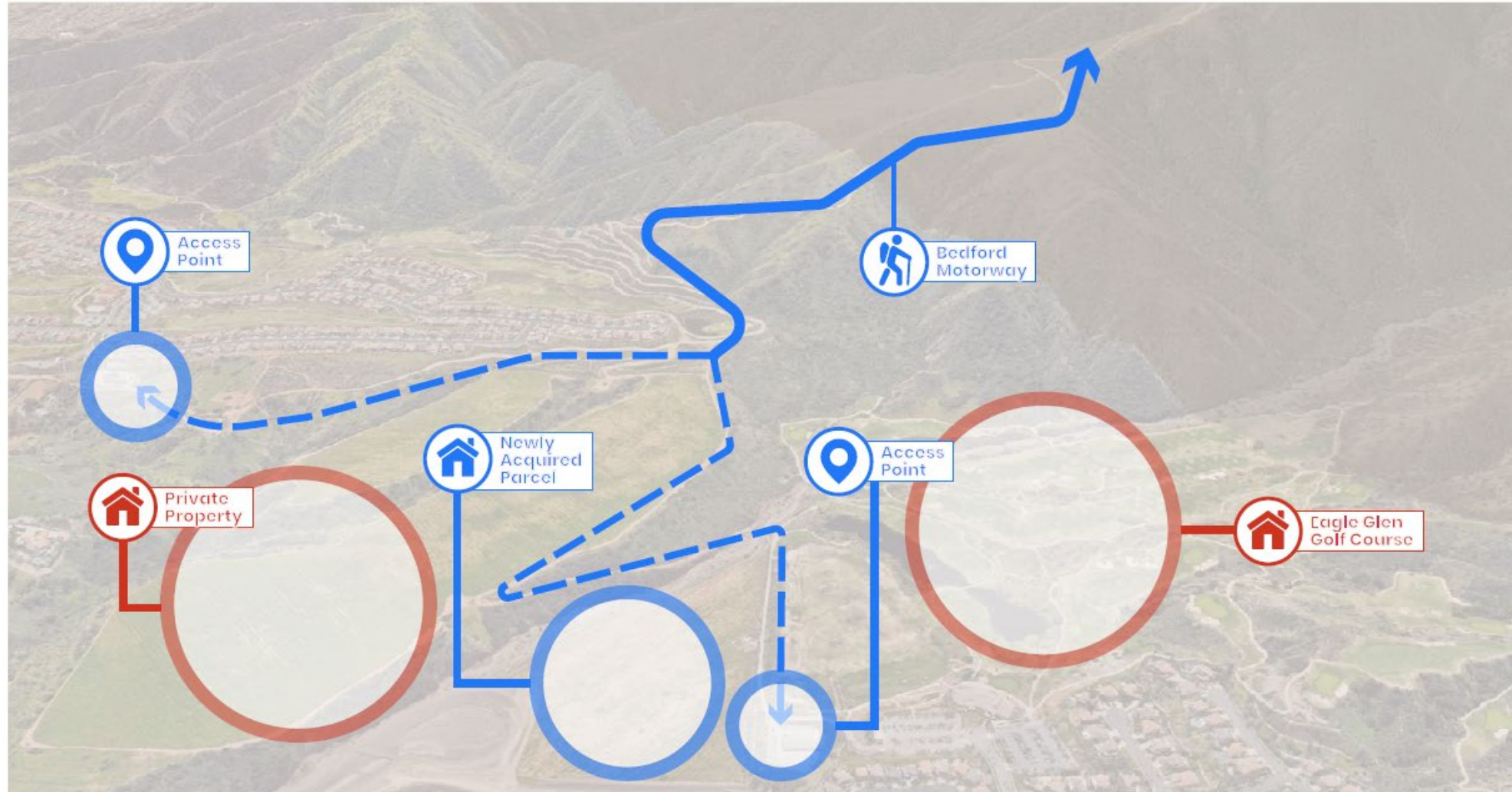
## PHASE II TRAILS MASTER PLAN

### EXISTING/PROPOSED TRAILS

- City Boundary
- Trails Working Group Identified Alignments
- Existing Trails (TMI, TMP I)
- Proposed Trail Alignments (TMP I)



# BEDFORD MOTORWAY



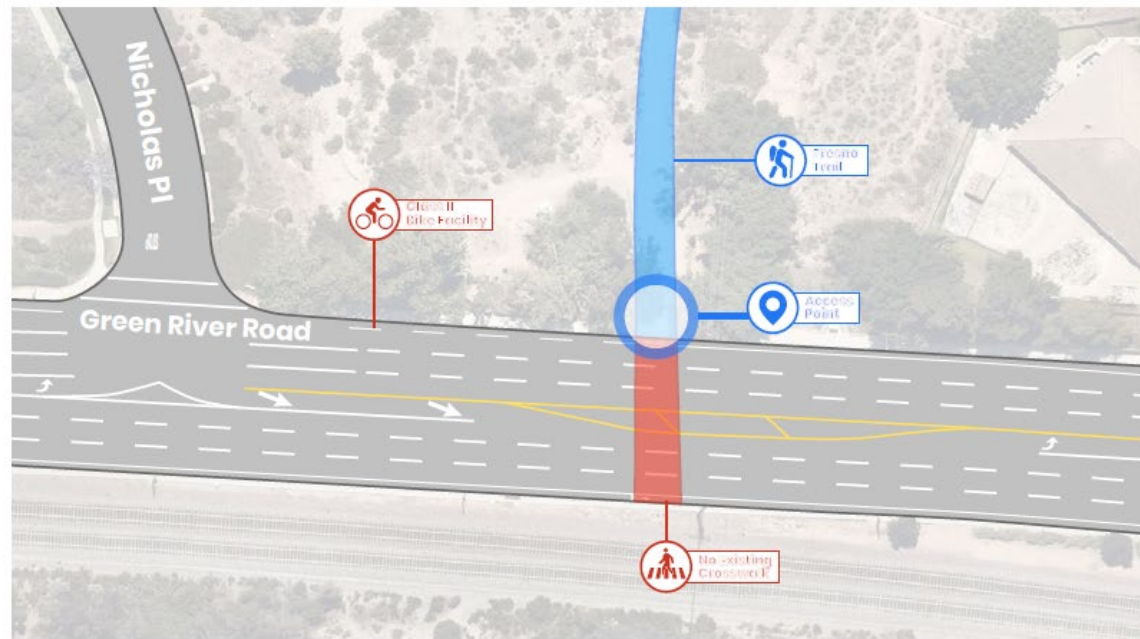
Visitors can access Bedford Motorway via the Eagle Glen Golf Course. However, most visitors access the Motorway through the private McMillan Property.

# EAGLE ROAD



*Accessing the trail from Crown Ranch Road via Jameson Circle requires trespassing on private property.*

# FRESNO CANYON



*The access point at Green River Road (above) is less comfortable for active transportation users and has less parking than the Oakridge Drive access point (below).*

# TRAIL PRIORITIZATION – INDICATORS & WEIGHTING

- **Implementation**
  - Within City ROW
  - Feasibility
  - Costs & Maintenance
  
- **Access & Equity**
  - Improved Access for Underserved Areas
  - Improves Access for Disadvantaged Communities
  - Connectivity (up to 1 mile)
    - Key Destinations
    - Parks & Open Space
    - Public Transit Network
    - Existing/planned Active Transportation Network
  - Available / planned parking
  
- **Safety**
  - Level of Traffic Stress
  - Collision History (up to ½ mile)
  - Crime (up to ¼ mile; if available)
  
- **User Experience**
  - Slopes
  - Trailheads & signage
  - Planned / existing facilities
  - Viewsheds
  - Existing shade
  
- **Community Support**
  - Trails Working Group Input
  - Community Identified Need (survey, meetings, comments)
  
- **Others**
  - Discussion

*Thank you!*

Moses Cortez

Facilities, Parks, and Trails Manager

[moses.cortez@coronaca.gov](mailto:moses.cortez@coronaca.gov)

Tim Bevins

Alta Planning + Design

[timbevins@altago.com](mailto:timbevins@altago.com)

Anne K. Turner

Director of Community Services

[anne.turner@coronaca.gov](mailto:anne.turner@coronaca.gov)

[WWW.TRAILS.CORONACA.GOV](http://WWW.TRAILS.CORONACA.GOV)