

◇ EAGLE ROOFING TILE
CAPISTRANO ADOBE BLEND, PRODUCT No 3723



◇ 3/8" EXTERIOR CEMENT PLASTER LA HABRA STUCCO
CRYSTAL WHITE X-50 (79)-BASE 100 SMOOTH FINISH



◇ RECESSED VINYL EXTERIOR DOORS & WINDOWS
JELD-WEN V-2500 SERIES, BONE COLOR



BUENA VISTA SENIOR LIVING

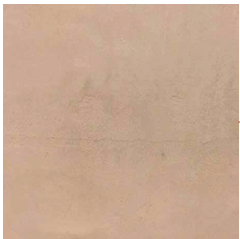
159 N. BUENA VISTA AVE
CORONA, CA 92882



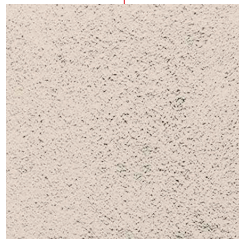
CONCEPTS
 LIVE SPOULD INC



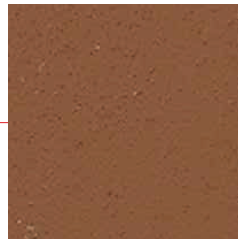
◇ 3x6 HOPE PLASTIC LUMBER TRELLIS BY TANGENT
FACTORY FINISH DARK BROWN



◇ 3/8" EXTERIOR CEMENT PLASTER LA HABRA STUCCO
BELLE GLADE 81583 (27)-BASE 100-SMOOTH FINISH



◇ 3/8" EXTERIOR CEMENT PLASTER LA HABRA STUCCO
ALAMO X-524 (45)-BASE 200 SAND FINISH



◇ 3/8" EXTERIOR CEMENT PLASTER LA HABRA STUCCO
ASHEVILLE 63152 (20)-BASE 100 SAND FINISH

MATERIAL

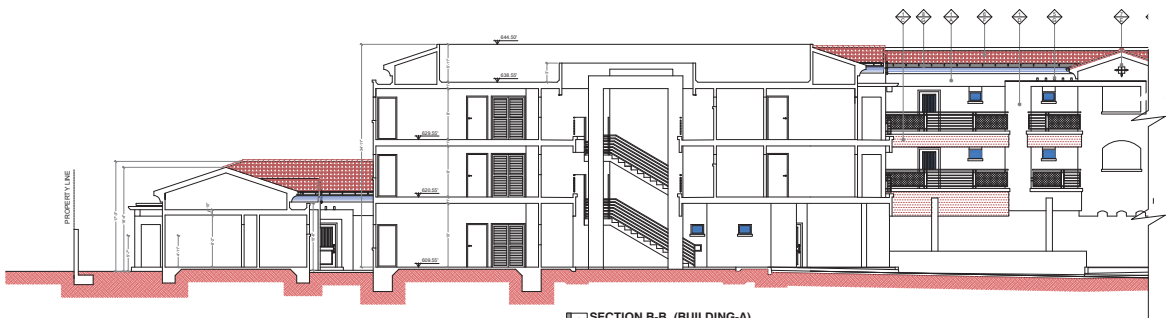
- ◇ 3/8" EXTERIOR CEMENT PLASTER LA HABRA STUCCO COMPANY
- ◇ 3x6 HOPE PLASTIC LUMBER TRELLIS BY TANGENT
- ◇ JELD-WEN
- ◇ EAGLE ROOFING TILE
- ◇ METAL CORNERKIT
- ◇ METAL TRAP DOOR COVER

FINISHES & COLORS

- ◇ LA HABRA STUCCO - ALAMO X-524 (45)-BASE 200 SAND FINISH
- ◇ LA HABRA STUCCO - ASHEVILLE 63152 (20)-BASE 100 SAND FINISH
- ◇ FACTORY FINISH - BROWN
- ◇ LA HABRA STUCCO - BELLE GLADE 81583 (27)-BASE 100 SMOOTH FINISH
- ◇ INTERIORS - OLIVE GREEN FLAT METAL
- ◇ CAPISTRANO ADOBE BLEND - PRODUCT NO 3723
- ◇ FACTORY FINISH - DARK BROWN
- ◇ JELD-WEN V-2500 SERIES - BONE COLOR WITH BRASS/ALUMINUM
- ◇ LA HABRA STUCCO - CRYSTAL WHITE X-50 (79)-BASE 100 SMOOTH FINISH



1 WEST ELEVATION INTERIOR VIEW-1/ SECTION A-A (BUILDING-A)
 SCALE: 3/16" = 1'-0"

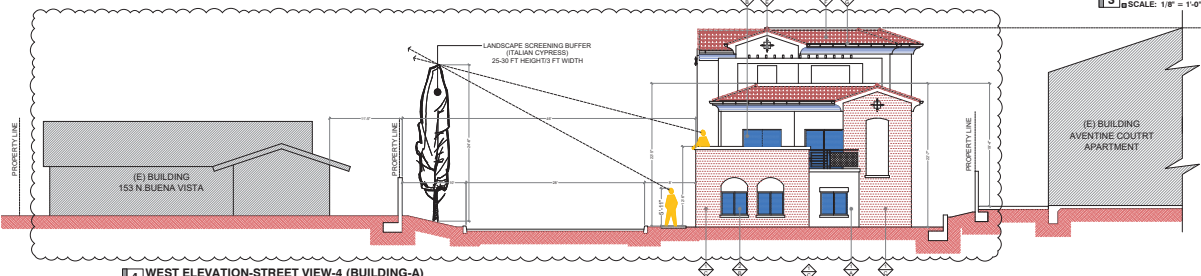


2 SECTION B-B (BUILDING-A)
 SCALE: 3/16" = 1'-0"

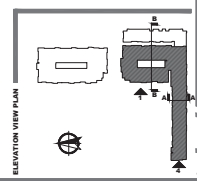
- MATERIAL**
- 1. EXTERIOR WALLS: BRICK WITH STUCCO FINISH
 - 2. INTERIOR WALLS: GYPSONUM BOARD WITH PLASTER FINISH
 - 3. INTERIOR CEILING: GYPSONUM BOARD WITH PLASTER FINISH
 - 4. FLOORING: POLISHED CONCRETE
 - 5. ROOFING: CLAY TILE
 - 6. BALCONY FLOORING: POLISHED CONCRETE
 - 7. BALCONY RAILING: WOOD WITH GLASS INFILL
 - 8. STAIRS: POLISHED CONCRETE
 - 9. STAIR RAILING: WOOD WITH GLASS INFILL
 - 10. WINDOW FRAMES: ALUMINUM
 - 11. DOOR FRAMES: WOOD
 - 12. STAIR CASE: WOOD
 - 13. STAIR CASE RAILING: WOOD WITH GLASS INFILL
 - 14. STAIR CASE BALUSTRADE: WOOD
 - 15. STAIR CASE BALUSTRADE RAILING: WOOD WITH GLASS INFILL
 - 16. STAIR CASE BALUSTRADE FINISH: WOOD
 - 17. STAIR CASE BALUSTRADE FINISH COLOR: WOOD
 - 18. STAIR CASE BALUSTRADE FINISH COLOR: WOOD
 - 19. STAIR CASE BALUSTRADE FINISH COLOR: WOOD
 - 20. STAIR CASE BALUSTRADE FINISH COLOR: WOOD
 - 21. STAIR CASE BALUSTRADE FINISH COLOR: WOOD
 - 22. STAIR CASE BALUSTRADE FINISH COLOR: WOOD
 - 23. STAIR CASE BALUSTRADE FINISH COLOR: WOOD
 - 24. STAIR CASE BALUSTRADE FINISH COLOR: WOOD
 - 25. STAIR CASE BALUSTRADE FINISH COLOR: WOOD
 - 26. STAIR CASE BALUSTRADE FINISH COLOR: WOOD
 - 27. STAIR CASE BALUSTRADE FINISH COLOR: WOOD
 - 28. STAIR CASE BALUSTRADE FINISH COLOR: WOOD
 - 29. STAIR CASE BALUSTRADE FINISH COLOR: WOOD
 - 30. STAIR CASE BALUSTRADE FINISH COLOR: WOOD
 - 31. STAIR CASE BALUSTRADE FINISH COLOR: WOOD
 - 32. STAIR CASE BALUSTRADE FINISH COLOR: WOOD
 - 33. STAIR CASE BALUSTRADE FINISH COLOR: WOOD
 - 34. STAIR CASE BALUSTRADE FINISH COLOR: WOOD
 - 35. STAIR CASE BALUSTRADE FINISH COLOR: WOOD
 - 36. STAIR CASE BALUSTRADE FINISH COLOR: WOOD
 - 37. STAIR CASE BALUSTRADE FINISH COLOR: WOOD
 - 38. STAIR CASE BALUSTRADE FINISH COLOR: WOOD
 - 39. STAIR CASE BALUSTRADE FINISH COLOR: WOOD
 - 40. STAIR CASE BALUSTRADE FINISH COLOR: WOOD
 - 41. STAIR CASE BALUSTRADE FINISH COLOR: WOOD
 - 42. STAIR CASE BALUSTRADE FINISH COLOR: WOOD
 - 43. STAIR CASE BALUSTRADE FINISH COLOR: WOOD
 - 44. STAIR CASE BALUSTRADE FINISH COLOR: WOOD
 - 45. STAIR CASE BALUSTRADE FINISH COLOR: WOOD
 - 46. STAIR CASE BALUSTRADE FINISH COLOR: WOOD
 - 47. STAIR CASE BALUSTRADE FINISH COLOR: WOOD
 - 48. STAIR CASE BALUSTRADE FINISH COLOR: WOOD
 - 49. STAIR CASE BALUSTRADE FINISH COLOR: WOOD
 - 50. STAIR CASE BALUSTRADE FINISH COLOR: WOOD
- FINISHES & COLORS**
- 1. EXTERIOR WALLS: BRICK WITH STUCCO FINISH
 - 2. INTERIOR WALLS: GYPSONUM BOARD WITH PLASTER FINISH
 - 3. INTERIOR CEILING: GYPSONUM BOARD WITH PLASTER FINISH
 - 4. FLOORING: POLISHED CONCRETE
 - 5. ROOFING: CLAY TILE
 - 6. BALCONY FLOORING: POLISHED CONCRETE
 - 7. BALCONY RAILING: WOOD WITH GLASS INFILL
 - 8. STAIRS: POLISHED CONCRETE
 - 9. STAIR RAILING: WOOD WITH GLASS INFILL
 - 10. WINDOW FRAMES: ALUMINUM
 - 11. DOOR FRAMES: WOOD
 - 12. STAIR CASE: WOOD
 - 13. STAIR CASE RAILING: WOOD WITH GLASS INFILL
 - 14. STAIR CASE BALUSTRADE: WOOD
 - 15. STAIR CASE BALUSTRADE RAILING: WOOD WITH GLASS INFILL
 - 16. STAIR CASE BALUSTRADE FINISH: WOOD
 - 17. STAIR CASE BALUSTRADE FINISH COLOR: WOOD
 - 18. STAIR CASE BALUSTRADE FINISH COLOR: WOOD
 - 19. STAIR CASE BALUSTRADE FINISH COLOR: WOOD
 - 20. STAIR CASE BALUSTRADE FINISH COLOR: WOOD
 - 21. STAIR CASE BALUSTRADE FINISH COLOR: WOOD
 - 22. STAIR CASE BALUSTRADE FINISH COLOR: WOOD
 - 23. STAIR CASE BALUSTRADE FINISH COLOR: WOOD
 - 24. STAIR CASE BALUSTRADE FINISH COLOR: WOOD
 - 25. STAIR CASE BALUSTRADE FINISH COLOR: WOOD
 - 26. STAIR CASE BALUSTRADE FINISH COLOR: WOOD
 - 27. STAIR CASE BALUSTRADE FINISH COLOR: WOOD
 - 28. STAIR CASE BALUSTRADE FINISH COLOR: WOOD
 - 29. STAIR CASE BALUSTRADE FINISH COLOR: WOOD
 - 30. STAIR CASE BALUSTRADE FINISH COLOR: WOOD
 - 31. STAIR CASE BALUSTRADE FINISH COLOR: WOOD
 - 32. STAIR CASE BALUSTRADE FINISH COLOR: WOOD
 - 33. STAIR CASE BALUSTRADE FINISH COLOR: WOOD
 - 34. STAIR CASE BALUSTRADE FINISH COLOR: WOOD
 - 35. STAIR CASE BALUSTRADE FINISH COLOR: WOOD
 - 36. STAIR CASE BALUSTRADE FINISH COLOR: WOOD
 - 37. STAIR CASE BALUSTRADE FINISH COLOR: WOOD
 - 38. STAIR CASE BALUSTRADE FINISH COLOR: WOOD
 - 39. STAIR CASE BALUSTRADE FINISH COLOR: WOOD
 - 40. STAIR CASE BALUSTRADE FINISH COLOR: WOOD
 - 41. STAIR CASE BALUSTRADE FINISH COLOR: WOOD
 - 42. STAIR CASE BALUSTRADE FINISH COLOR: WOOD
 - 43. STAIR CASE BALUSTRADE FINISH COLOR: WOOD
 - 44. STAIR CASE BALUSTRADE FINISH COLOR: WOOD
 - 45. STAIR CASE BALUSTRADE FINISH COLOR: WOOD
 - 46. STAIR CASE BALUSTRADE FINISH COLOR: WOOD
 - 47. STAIR CASE BALUSTRADE FINISH COLOR: WOOD
 - 48. STAIR CASE BALUSTRADE FINISH COLOR: WOOD
 - 49. STAIR CASE BALUSTRADE FINISH COLOR: WOOD
 - 50. STAIR CASE BALUSTRADE FINISH COLOR: WOOD



3 GENERAL WEST ELEVATION (BUILDING-A)
 SCALE: 1/8" = 1'-0"



4 WEST ELEVATION-STREET VIEW-4 (BUILDING-A)
 SCALE: 3/16" = 1'-0"



ELEVATION VIEW PLAN
 SCALE: 1/8" = 1'-0"

BLIVE GROUP
 8001 WILSON AVENUE, SUITE 100, BOSTON, MA 02118
 TEL: 617-262-0401

OWNER NAME & ADDRESS
 153 N. BUENA VISTA
 BOSTON, MA 02118

PROJECT NAME & ADDRESS
 153 N. BUENA VISTA
 BOSTON, MA 02118

REVISIONS

NO.	DESCRIPTION	DATE
1	ISSUED FOR PERMIT	09-19-22
2	ISSUED FOR PERMIT	09-19-22

DESIGNED BY
 BLIVE GROUP

SCALE
 1/8" = 1'-0"

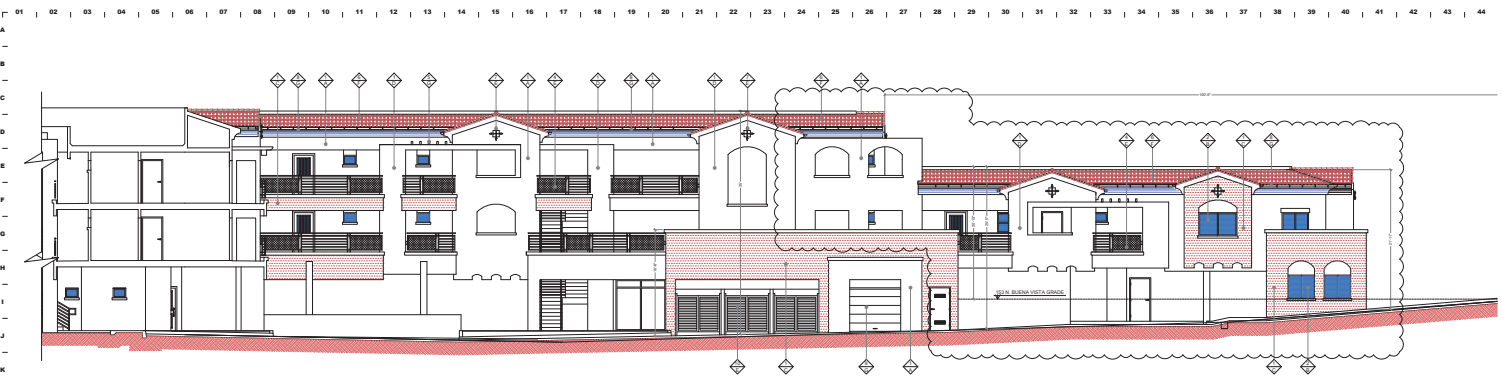
DATE
 09-19-22

PROJECT NUMBER
 77000-19

SCALE
 1/8" = 1'-0"

WEST ELEVATIONS & SECTIONS A-A & B-B BUILDING-A

A05



1 NORTH ELEVATION-INTERIOR VIEW-1 (BUILDING-A)
SCALE: 3/16" = 1'-0"



2 NORTH ELEVATION-INTERIOR VIEW-2 (BUILDING-A)
SCALE: 3/16" = 1'-0"

- MATERIAL**
- 1. 1/2" THICK CONCRETE SLAB ON GRADE
 - 2. 4" THICK CONCRETE WALLS
 - 3. 8" THICK CONCRETE WALLS
 - 4. 12" THICK CONCRETE WALLS
 - 5. 16" THICK CONCRETE WALLS
 - 6. 20" THICK CONCRETE WALLS
 - 7. 24" THICK CONCRETE WALLS
 - 8. 28" THICK CONCRETE WALLS
 - 9. 32" THICK CONCRETE WALLS
 - 10. 36" THICK CONCRETE WALLS
 - 11. 40" THICK CONCRETE WALLS
 - 12. 44" THICK CONCRETE WALLS
 - 13. 48" THICK CONCRETE WALLS
 - 14. 52" THICK CONCRETE WALLS
 - 15. 56" THICK CONCRETE WALLS
 - 16. 60" THICK CONCRETE WALLS
 - 17. 64" THICK CONCRETE WALLS
 - 18. 68" THICK CONCRETE WALLS
 - 19. 72" THICK CONCRETE WALLS
 - 20. 76" THICK CONCRETE WALLS
 - 21. 80" THICK CONCRETE WALLS
 - 22. 84" THICK CONCRETE WALLS
 - 23. 88" THICK CONCRETE WALLS
 - 24. 92" THICK CONCRETE WALLS
 - 25. 96" THICK CONCRETE WALLS
 - 26. 100" THICK CONCRETE WALLS
 - 27. 104" THICK CONCRETE WALLS
 - 28. 108" THICK CONCRETE WALLS
 - 29. 112" THICK CONCRETE WALLS
 - 30. 116" THICK CONCRETE WALLS
 - 31. 120" THICK CONCRETE WALLS
 - 32. 124" THICK CONCRETE WALLS
 - 33. 128" THICK CONCRETE WALLS
 - 34. 132" THICK CONCRETE WALLS
 - 35. 136" THICK CONCRETE WALLS
 - 36. 140" THICK CONCRETE WALLS
 - 37. 144" THICK CONCRETE WALLS
 - 38. 148" THICK CONCRETE WALLS
 - 39. 152" THICK CONCRETE WALLS
 - 40. 156" THICK CONCRETE WALLS
 - 41. 160" THICK CONCRETE WALLS
 - 42. 164" THICK CONCRETE WALLS
 - 43. 168" THICK CONCRETE WALLS
 - 44. 172" THICK CONCRETE WALLS
- FINISHES & COLORS**
- 1. LIGHT GRAY CONCRETE
 - 2. WHITE PLASTER
 - 3. RED BRICK
 - 4. BLUE GROUT
 - 5. BROWN GROUT
 - 6. BLACK GROUT
 - 7. WHITE GROUT
 - 8. LIGHT GRAY GROUT
 - 9. MEDIUM GRAY GROUT
 - 10. DARK GRAY GROUT
 - 11. BLACK GROUT
 - 12. WHITE GROUT
 - 13. LIGHT GRAY GROUT
 - 14. MEDIUM GRAY GROUT
 - 15. DARK GRAY GROUT
 - 16. BLACK GROUT
 - 17. WHITE GROUT
 - 18. LIGHT GRAY GROUT
 - 19. MEDIUM GRAY GROUT
 - 20. DARK GRAY GROUT
 - 21. BLACK GROUT
 - 22. WHITE GROUT
 - 23. LIGHT GRAY GROUT
 - 24. MEDIUM GRAY GROUT
 - 25. DARK GRAY GROUT
 - 26. BLACK GROUT
 - 27. WHITE GROUT
 - 28. LIGHT GRAY GROUT
 - 29. MEDIUM GRAY GROUT
 - 30. DARK GRAY GROUT
 - 31. BLACK GROUT
 - 32. WHITE GROUT
 - 33. LIGHT GRAY GROUT
 - 34. MEDIUM GRAY GROUT
 - 35. DARK GRAY GROUT
 - 36. BLACK GROUT
 - 37. WHITE GROUT
 - 38. LIGHT GRAY GROUT
 - 39. MEDIUM GRAY GROUT
 - 40. DARK GRAY GROUT
 - 41. BLACK GROUT
 - 42. WHITE GROUT
 - 43. LIGHT GRAY GROUT
 - 44. MEDIUM GRAY GROUT
 - 45. DARK GRAY GROUT
 - 46. BLACK GROUT



3 GENERAL NORTH ELEVATION (BUILDING-A)
SCALE: 1/8" = 1'-0"

OWNER NAME & ADDRESS
W.M. BUENA VISTA GROCERIES
4000 LA BARRA DRIVE
CORONA, CA 92626

PROJECT NAME & ADDRESS
W.M. BUENA VISTA GROCERIES
4000 LA BARRA DRIVE
CORONA, CA 92626

REVISIONS

NO.	DESCRIPTION	DATE
1	ISSUED FOR PERMITS	01-19-22

DESIGNED BY
BLANCK-2

DESIGNED BY
BLANCK-2

SCALE
3/16" = 1'-0"

PROJECT NUMBER
77000-19

DATE PLOTTED
01-19-22

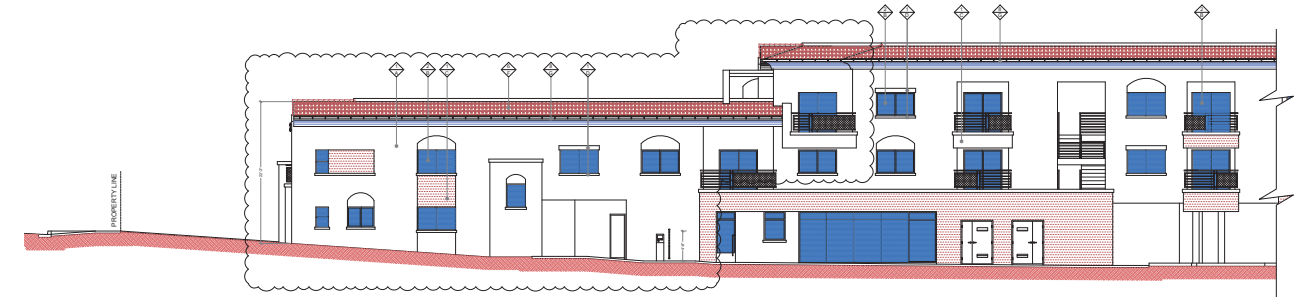
ELEVATION VIEW PLAN

NORTH ELEVATIONS VIEW 1 & 2
BUILDING-A

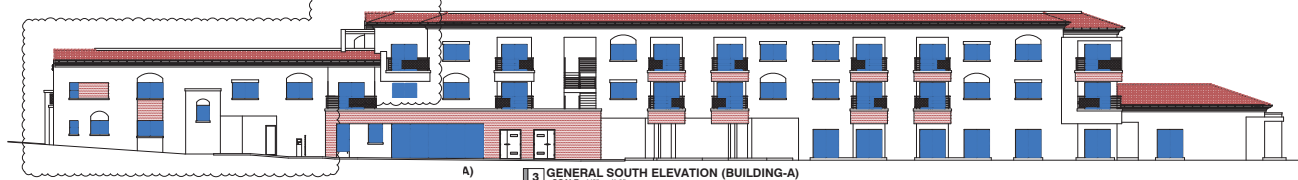
SCALE
A05.1 A



1 SOUTH ELEVATION SIDE VIEW-1 (BUILDING-A)
SCALE: 3/16" = 1'-0"



2 SOUTH ELEVATION SIDE VIEW-2 (BUILDING-A)
SCALE: 3/16" = 1'-0"

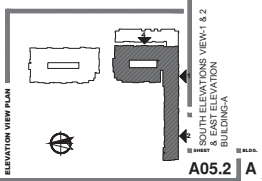


3 GENERAL SOUTH ELEVATION (BUILDING-A)
SCALE: 1/8" = 1'-0"



4 EAST ELEVATION (BUILDING-A)
SCALE: 3/16" = 1'-0"

- MATERIAL**
- 1. CONCRETE (SEE FINISHES & COLORS FOR FINISH)
 - 2. BRICK (SEE FINISHES & COLORS FOR FINISH)
 - 3. STUCCO (SEE FINISHES & COLORS FOR FINISH)
 - 4. METAL PANELS (SEE FINISHES & COLORS FOR FINISH)
 - 5. METAL ROOFING (SEE FINISHES & COLORS FOR FINISH)
 - 6. METAL FLASHING (SEE FINISHES & COLORS FOR FINISH)
 - 7. METAL DOWNSPOUTS (SEE FINISHES & COLORS FOR FINISH)
 - 8. METAL RAIN CAPS (SEE FINISHES & COLORS FOR FINISH)
 - 9. METAL VENT CAPS (SEE FINISHES & COLORS FOR FINISH)
 - 10. METAL GUTTERS (SEE FINISHES & COLORS FOR FINISH)
 - 11. METAL BALCONY RAILINGS (SEE FINISHES & COLORS FOR FINISH)
 - 12. METAL STAIRS (SEE FINISHES & COLORS FOR FINISH)
 - 13. METAL HANDRAILS (SEE FINISHES & COLORS FOR FINISH)
 - 14. METAL FLOORING (SEE FINISHES & COLORS FOR FINISH)
 - 15. METAL WALLS (SEE FINISHES & COLORS FOR FINISH)
 - 16. METAL CEILING (SEE FINISHES & COLORS FOR FINISH)
 - 17. METAL LIGHT FIXTURES (SEE FINISHES & COLORS FOR FINISH)
 - 18. METAL DOOR AND WINDOW FRAMES (SEE FINISHES & COLORS FOR FINISH)
 - 19. METAL WINDOW SILLINGS (SEE FINISHES & COLORS FOR FINISH)
 - 20. METAL WINDOW CASINGS (SEE FINISHES & COLORS FOR FINISH)
 - 21. METAL WINDOW GLASS (SEE FINISHES & COLORS FOR FINISH)
 - 22. METAL WINDOW SHUTTERS (SEE FINISHES & COLORS FOR FINISH)
 - 23. METAL WINDOW BLINDS (SEE FINISHES & COLORS FOR FINISH)
 - 24. METAL WINDOW COORDINATING DEVICES (SEE FINISHES & COLORS FOR FINISH)
 - 25. METAL WINDOW COORDINATING DEVICES (SEE FINISHES & COLORS FOR FINISH)
 - 26. METAL WINDOW COORDINATING DEVICES (SEE FINISHES & COLORS FOR FINISH)
 - 27. METAL WINDOW COORDINATING DEVICES (SEE FINISHES & COLORS FOR FINISH)
 - 28. METAL WINDOW COORDINATING DEVICES (SEE FINISHES & COLORS FOR FINISH)
 - 29. METAL WINDOW COORDINATING DEVICES (SEE FINISHES & COLORS FOR FINISH)
 - 30. METAL WINDOW COORDINATING DEVICES (SEE FINISHES & COLORS FOR FINISH)
 - 31. METAL WINDOW COORDINATING DEVICES (SEE FINISHES & COLORS FOR FINISH)
 - 32. METAL WINDOW COORDINATING DEVICES (SEE FINISHES & COLORS FOR FINISH)
 - 33. METAL WINDOW COORDINATING DEVICES (SEE FINISHES & COLORS FOR FINISH)
 - 34. METAL WINDOW COORDINATING DEVICES (SEE FINISHES & COLORS FOR FINISH)
 - 35. METAL WINDOW COORDINATING DEVICES (SEE FINISHES & COLORS FOR FINISH)
 - 36. METAL WINDOW COORDINATING DEVICES (SEE FINISHES & COLORS FOR FINISH)
 - 37. METAL WINDOW COORDINATING DEVICES (SEE FINISHES & COLORS FOR FINISH)
 - 38. METAL WINDOW COORDINATING DEVICES (SEE FINISHES & COLORS FOR FINISH)
 - 39. METAL WINDOW COORDINATING DEVICES (SEE FINISHES & COLORS FOR FINISH)
 - 40. METAL WINDOW COORDINATING DEVICES (SEE FINISHES & COLORS FOR FINISH)
 - 41. METAL WINDOW COORDINATING DEVICES (SEE FINISHES & COLORS FOR FINISH)
 - 42. METAL WINDOW COORDINATING DEVICES (SEE FINISHES & COLORS FOR FINISH)
 - 43. METAL WINDOW COORDINATING DEVICES (SEE FINISHES & COLORS FOR FINISH)
 - 44. METAL WINDOW COORDINATING DEVICES (SEE FINISHES & COLORS FOR FINISH)
- FINISHES & COLORS**
- 1. CONCRETE (SEE FINISHES & COLORS FOR FINISH)
 - 2. BRICK (SEE FINISHES & COLORS FOR FINISH)
 - 3. STUCCO (SEE FINISHES & COLORS FOR FINISH)
 - 4. METAL PANELS (SEE FINISHES & COLORS FOR FINISH)
 - 5. METAL ROOFING (SEE FINISHES & COLORS FOR FINISH)
 - 6. METAL FLASHING (SEE FINISHES & COLORS FOR FINISH)
 - 7. METAL DOWNSPOUTS (SEE FINISHES & COLORS FOR FINISH)
 - 8. METAL RAIN CAPS (SEE FINISHES & COLORS FOR FINISH)
 - 9. METAL VENT CAPS (SEE FINISHES & COLORS FOR FINISH)
 - 10. METAL GUTTERS (SEE FINISHES & COLORS FOR FINISH)
 - 11. METAL BALCONY RAILINGS (SEE FINISHES & COLORS FOR FINISH)
 - 12. METAL STAIRS (SEE FINISHES & COLORS FOR FINISH)
 - 13. METAL HANDRAILS (SEE FINISHES & COLORS FOR FINISH)
 - 14. METAL FLOORING (SEE FINISHES & COLORS FOR FINISH)
 - 15. METAL WALLS (SEE FINISHES & COLORS FOR FINISH)
 - 16. METAL CEILING (SEE FINISHES & COLORS FOR FINISH)
 - 17. METAL LIGHT FIXTURES (SEE FINISHES & COLORS FOR FINISH)
 - 18. METAL DOOR AND WINDOW FRAMES (SEE FINISHES & COLORS FOR FINISH)
 - 19. METAL WINDOW SILLINGS (SEE FINISHES & COLORS FOR FINISH)
 - 20. METAL WINDOW CASINGS (SEE FINISHES & COLORS FOR FINISH)
 - 21. METAL WINDOW GLASS (SEE FINISHES & COLORS FOR FINISH)
 - 22. METAL WINDOW SHUTTERS (SEE FINISHES & COLORS FOR FINISH)
 - 23. METAL WINDOW BLINDS (SEE FINISHES & COLORS FOR FINISH)
 - 24. METAL WINDOW COORDINATING DEVICES (SEE FINISHES & COLORS FOR FINISH)
 - 25. METAL WINDOW COORDINATING DEVICES (SEE FINISHES & COLORS FOR FINISH)
 - 26. METAL WINDOW COORDINATING DEVICES (SEE FINISHES & COLORS FOR FINISH)
 - 27. METAL WINDOW COORDINATING DEVICES (SEE FINISHES & COLORS FOR FINISH)
 - 28. METAL WINDOW COORDINATING DEVICES (SEE FINISHES & COLORS FOR FINISH)
 - 29. METAL WINDOW COORDINATING DEVICES (SEE FINISHES & COLORS FOR FINISH)
 - 30. METAL WINDOW COORDINATING DEVICES (SEE FINISHES & COLORS FOR FINISH)
 - 31. METAL WINDOW COORDINATING DEVICES (SEE FINISHES & COLORS FOR FINISH)
 - 32. METAL WINDOW COORDINATING DEVICES (SEE FINISHES & COLORS FOR FINISH)
 - 33. METAL WINDOW COORDINATING DEVICES (SEE FINISHES & COLORS FOR FINISH)
 - 34. METAL WINDOW COORDINATING DEVICES (SEE FINISHES & COLORS FOR FINISH)
 - 35. METAL WINDOW COORDINATING DEVICES (SEE FINISHES & COLORS FOR FINISH)
 - 36. METAL WINDOW COORDINATING DEVICES (SEE FINISHES & COLORS FOR FINISH)
 - 37. METAL WINDOW COORDINATING DEVICES (SEE FINISHES & COLORS FOR FINISH)
 - 38. METAL WINDOW COORDINATING DEVICES (SEE FINISHES & COLORS FOR FINISH)
 - 39. METAL WINDOW COORDINATING DEVICES (SEE FINISHES & COLORS FOR FINISH)
 - 40. METAL WINDOW COORDINATING DEVICES (SEE FINISHES & COLORS FOR FINISH)
 - 41. METAL WINDOW COORDINATING DEVICES (SEE FINISHES & COLORS FOR FINISH)
 - 42. METAL WINDOW COORDINATING DEVICES (SEE FINISHES & COLORS FOR FINISH)
 - 43. METAL WINDOW COORDINATING DEVICES (SEE FINISHES & COLORS FOR FINISH)
 - 44. METAL WINDOW COORDINATING DEVICES (SEE FINISHES & COLORS FOR FINISH)



A 01 02 03 04 05 06 07 08 09 10 11 12 13 14 15 16 17 18 19 20 21 22 23 24 25 26 27 28 29 30 31 32 33 34 35 36 37 38 39 40 41 42 43 44



1 WEST ELEVATION-INTERIOR (BUILDING-B)
SCALE: 3/16" = 1'-0"



2 EAST ELEVATION-INTERIOR (BUILDING-B)
SCALE: 3/16" = 1'-0"

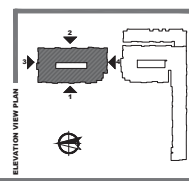


4 SOUTH ELEVATION-INTERIOR (BUILDING-B)
SCALE: 3/16" = 1'-0"



3 NORTH ELEVATION-INTERIOR (BUILDING-B)
SCALE: 3/16" = 1'-0"

- MATERIAL**
- 1. EXTERIOR WALLS - CONCRETE BLOCK WITH STUCCO FINISH
 - 2. EXTERIOR ROOFING - RED TILE
 - 3. EXTERIOR FLOORING - POLISHED CONCRETE
 - 4. EXTERIOR BALCONY FLOORING - POLISHED CONCRETE
 - 5. EXTERIOR BALCONY RAILINGS - ALUMINUM
 - 6. EXTERIOR BALCONY FENCING - WOOD
 - 7. EXTERIOR BALCONY LIGHTS - LED
 - 8. EXTERIOR BALCONY PLANTS - VARIOUS
 - 9. EXTERIOR BALCONY SEATING - WOOD
 - 10. EXTERIOR BALCONY STAIRS - ALUMINUM
 - 11. EXTERIOR BALCONY STAIRS - WOOD
 - 12. EXTERIOR BALCONY STAIRS - METAL
 - 13. EXTERIOR BALCONY STAIRS - CONCRETE
 - 14. EXTERIOR BALCONY STAIRS - METAL
 - 15. EXTERIOR BALCONY STAIRS - WOOD
 - 16. EXTERIOR BALCONY STAIRS - METAL
 - 17. EXTERIOR BALCONY STAIRS - WOOD
 - 18. EXTERIOR BALCONY STAIRS - METAL
 - 19. EXTERIOR BALCONY STAIRS - WOOD
 - 20. EXTERIOR BALCONY STAIRS - METAL
 - 21. EXTERIOR BALCONY STAIRS - WOOD
 - 22. EXTERIOR BALCONY STAIRS - METAL
 - 23. EXTERIOR BALCONY STAIRS - WOOD
 - 24. EXTERIOR BALCONY STAIRS - METAL
 - 25. EXTERIOR BALCONY STAIRS - WOOD
 - 26. EXTERIOR BALCONY STAIRS - METAL
 - 27. EXTERIOR BALCONY STAIRS - WOOD
 - 28. EXTERIOR BALCONY STAIRS - METAL
 - 29. EXTERIOR BALCONY STAIRS - WOOD
 - 30. EXTERIOR BALCONY STAIRS - METAL
 - 31. EXTERIOR BALCONY STAIRS - WOOD
 - 32. EXTERIOR BALCONY STAIRS - METAL
 - 33. EXTERIOR BALCONY STAIRS - WOOD
 - 34. EXTERIOR BALCONY STAIRS - METAL
 - 35. EXTERIOR BALCONY STAIRS - WOOD
 - 36. EXTERIOR BALCONY STAIRS - METAL
 - 37. EXTERIOR BALCONY STAIRS - WOOD
 - 38. EXTERIOR BALCONY STAIRS - METAL
 - 39. EXTERIOR BALCONY STAIRS - WOOD
 - 40. EXTERIOR BALCONY STAIRS - METAL
 - 41. EXTERIOR BALCONY STAIRS - WOOD
 - 42. EXTERIOR BALCONY STAIRS - METAL
 - 43. EXTERIOR BALCONY STAIRS - WOOD
 - 44. EXTERIOR BALCONY STAIRS - METAL
- FINISHES & COLORS**
- 1. EXTERIOR WALLS - STUCCO
 - 2. EXTERIOR WALLS - STUCCO
 - 3. EXTERIOR WALLS - STUCCO
 - 4. EXTERIOR WALLS - STUCCO
 - 5. EXTERIOR WALLS - STUCCO
 - 6. EXTERIOR WALLS - STUCCO
 - 7. EXTERIOR WALLS - STUCCO
 - 8. EXTERIOR WALLS - STUCCO
 - 9. EXTERIOR WALLS - STUCCO
 - 10. EXTERIOR WALLS - STUCCO
 - 11. EXTERIOR WALLS - STUCCO
 - 12. EXTERIOR WALLS - STUCCO
 - 13. EXTERIOR WALLS - STUCCO
 - 14. EXTERIOR WALLS - STUCCO
 - 15. EXTERIOR WALLS - STUCCO
 - 16. EXTERIOR WALLS - STUCCO
 - 17. EXTERIOR WALLS - STUCCO
 - 18. EXTERIOR WALLS - STUCCO
 - 19. EXTERIOR WALLS - STUCCO
 - 20. EXTERIOR WALLS - STUCCO
 - 21. EXTERIOR WALLS - STUCCO
 - 22. EXTERIOR WALLS - STUCCO
 - 23. EXTERIOR WALLS - STUCCO
 - 24. EXTERIOR WALLS - STUCCO
 - 25. EXTERIOR WALLS - STUCCO
 - 26. EXTERIOR WALLS - STUCCO
 - 27. EXTERIOR WALLS - STUCCO
 - 28. EXTERIOR WALLS - STUCCO
 - 29. EXTERIOR WALLS - STUCCO
 - 30. EXTERIOR WALLS - STUCCO
 - 31. EXTERIOR WALLS - STUCCO
 - 32. EXTERIOR WALLS - STUCCO
 - 33. EXTERIOR WALLS - STUCCO
 - 34. EXTERIOR WALLS - STUCCO
 - 35. EXTERIOR WALLS - STUCCO
 - 36. EXTERIOR WALLS - STUCCO
 - 37. EXTERIOR WALLS - STUCCO
 - 38. EXTERIOR WALLS - STUCCO
 - 39. EXTERIOR WALLS - STUCCO
 - 40. EXTERIOR WALLS - STUCCO
 - 41. EXTERIOR WALLS - STUCCO
 - 42. EXTERIOR WALLS - STUCCO
 - 43. EXTERIOR WALLS - STUCCO
 - 44. EXTERIOR WALLS - STUCCO



BLIVE GROUP
 8001 WILSON BLVD, SUITE 100, WEST GARDEN, CA 91301
 TEL: 626-296-0401
 WWW.BLIVEGROUP.COM

OWNER NAME & ADDRESS
 BLIVE GROUP
 8001 WILSON BLVD, SUITE 100
 WEST GARDEN, CA 91301

PROJECT NAME & ADDRESS
 BLIVE WEST GARDEN BUILDINGS
 8001 WILSON BLVD, SUITE 100
 WEST GARDEN, CA 91301

REVISIONS

NO.	DESCRIPTION	DATE
1	ISSUED FOR PERMITS	09-19-22
2	REVISED PER PERMITS	09-19-22

DESIGNED BY
 BLIVE GROUP

CHECKED BY
 BLIVE GROUP

DATE
 09-19-22

SCALE
 3/16" = 1'-0"

PROJECT NUMBER
 P000-19

DATE PLOTTED
 09-19-22

PROJECT NAME & ADDRESS
 BLIVE WEST GARDEN BUILDINGS
 8001 WILSON BLVD, SUITE 100
 WEST GARDEN, CA 91301

SCALE
 3/16" = 1'-0"

DATE PLOTTED
 09-19-22

PROJECT NAME & ADDRESS
 BLIVE WEST GARDEN BUILDINGS
 8001 WILSON BLVD, SUITE 100
 WEST GARDEN, CA 91301

SCALE
 3/16" = 1'-0"

DATE PLOTTED
 09-19-22