



CITY PARK MASTER PLAN

Parks and Recreation Commission Meeting Project Update

MAY 9, 2023
PRESENTED BY: RJM DESIGN GROUP

THE ASK

The Parks & Recreation Commission review key components of the City Park design and provide feedback for the final City Park Master Plan.



PROJECT PURPOSE



*Sound Infrastructure to
Create a Sense of
Place...*

Revisiting City Park
as a diverse, equitable,
and inclusive **experience**
for the Community of
Corona



PROJECT TIMELINE



COMMUNITY VOICE

Top Community Desires

1. Walking Trails
2. Playgrounds
3. Picnic Shelters / Pavilions
4. Botanical Garden or Arboretum
5. Performance or Event Space
6. Community or Recreation Building
7. Splashpad
8. Aquatic Center
9. Multi-Use Sports Field



2,100*

Survey Responses

*150 within 1 mile
325 within 1-2 miles
555 within 2-3 miles



CITY PARK



A STRONG REASON TO STAY ROOTED HERE!

Join us in planting some ideas.



We've thought of all kinds of ways to improve City Park. But first, we need your input. We want to know what's on your wish list. Your responses will help determine the updates we make to this park's facilities and programs.

Please fill out this survey by November 20, 2022. And know deep down, your voice matters here.

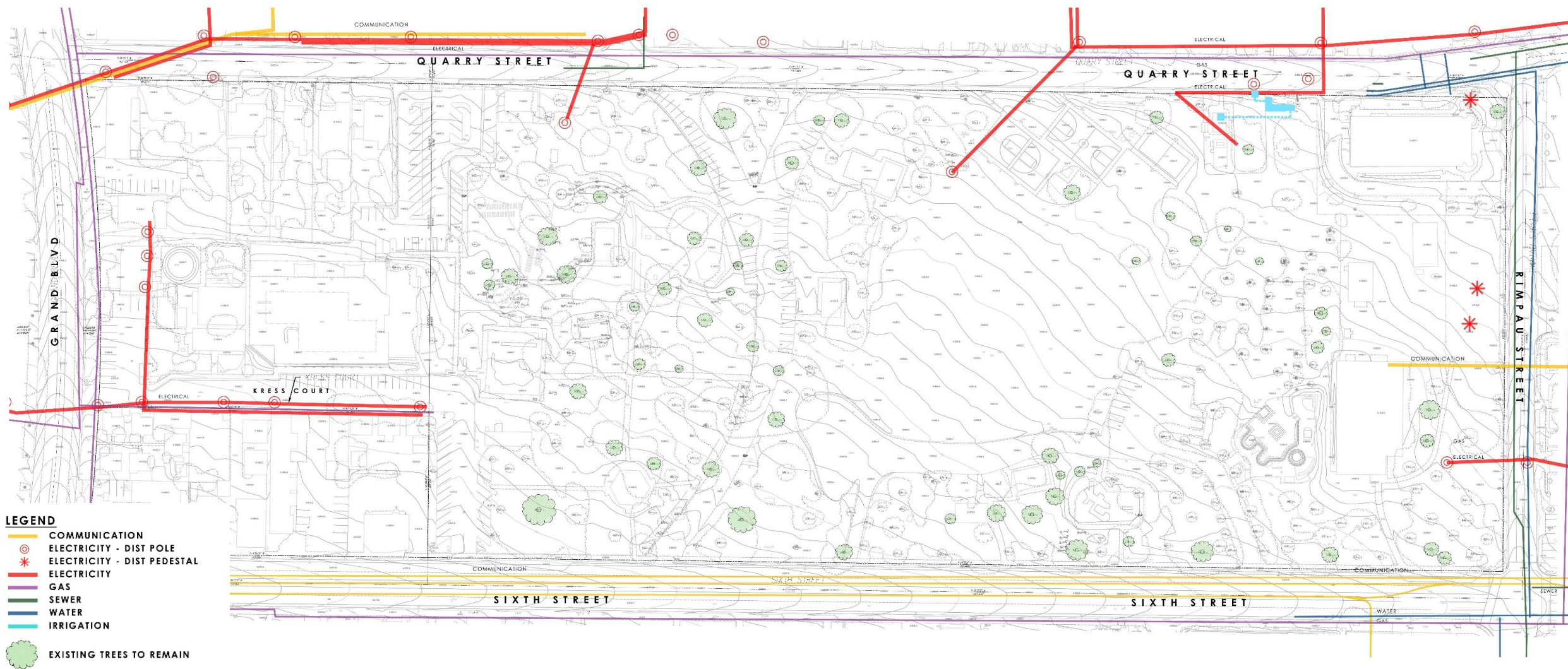
Scan the QR Code and help us plant some ideas or visit us at CityPark.CoronaCA.gov



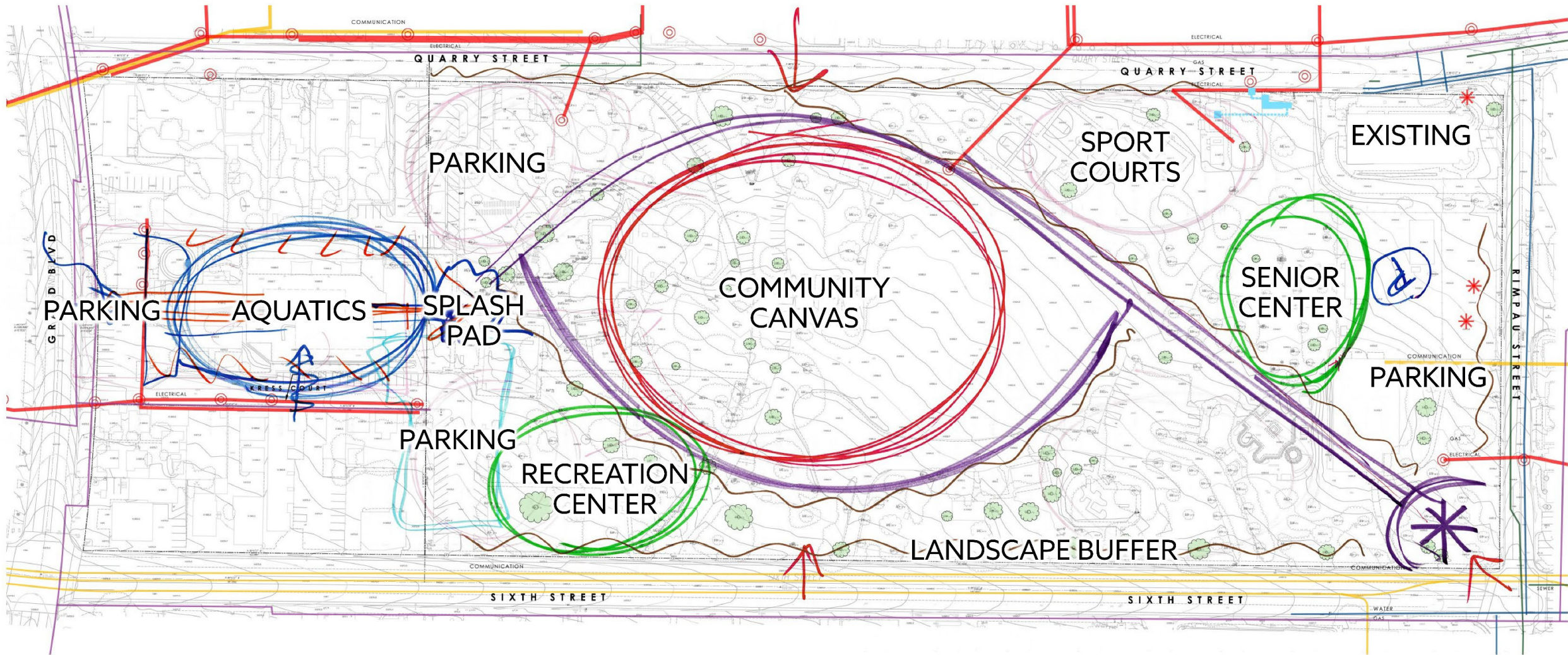
ROOTED IN COMMUNITY
CORONA PARKS



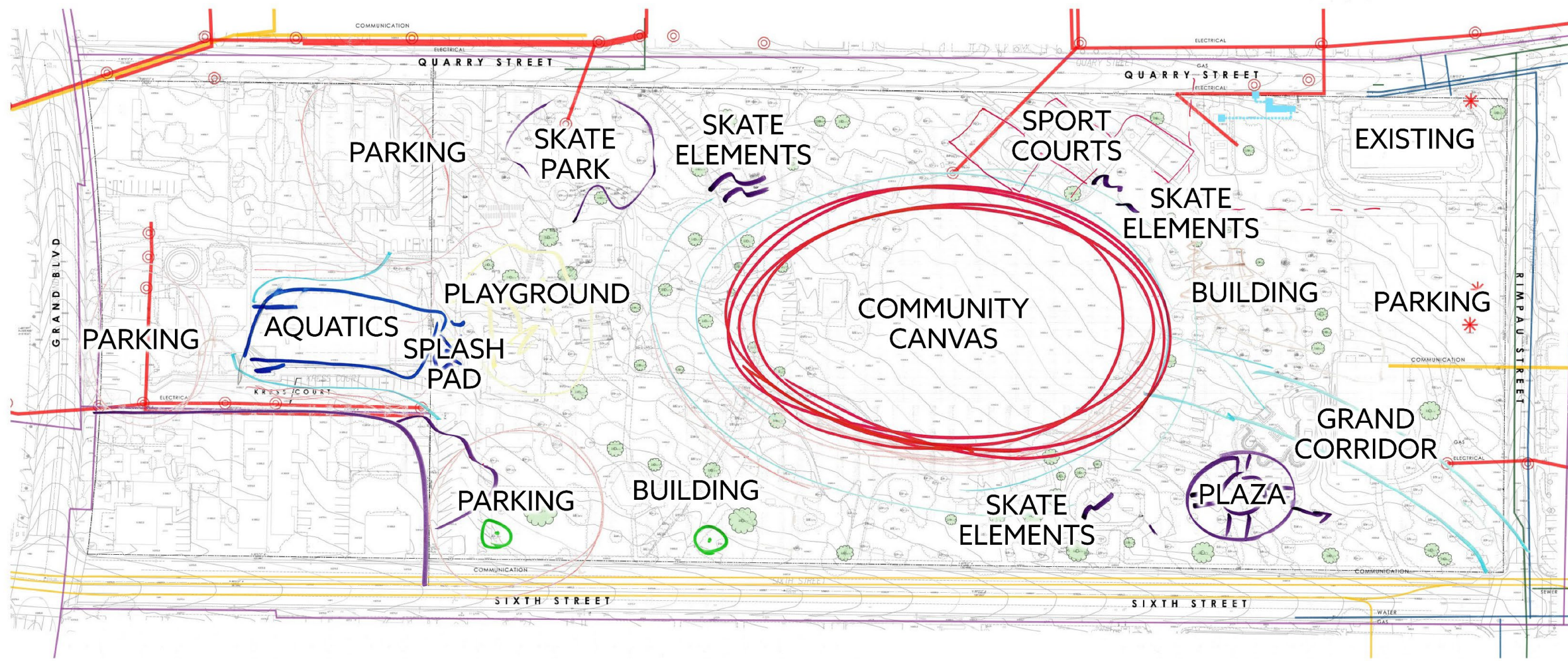
SITE ANALYSIS



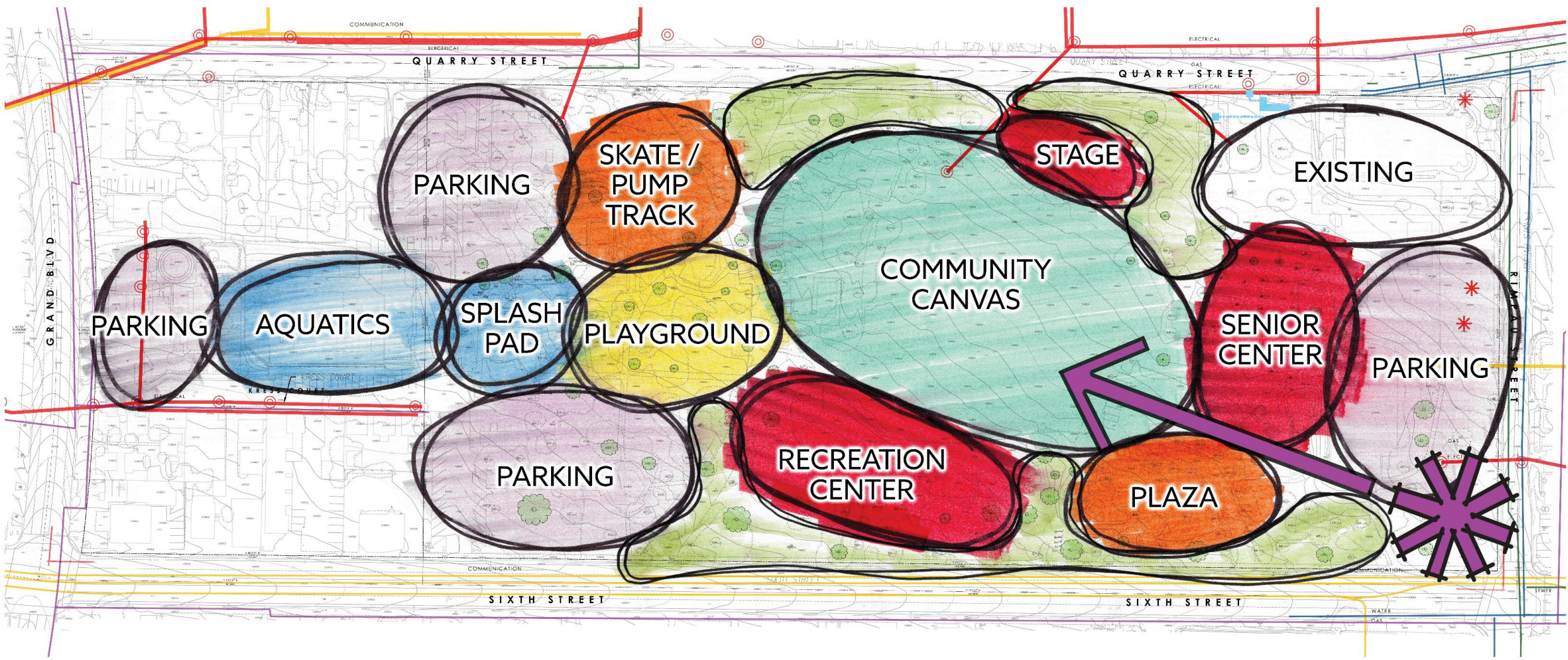
PROGRAM WORKSHOP – Bubble Diagram A



PROGRAM WORKSHOP – Bubble Diagram B



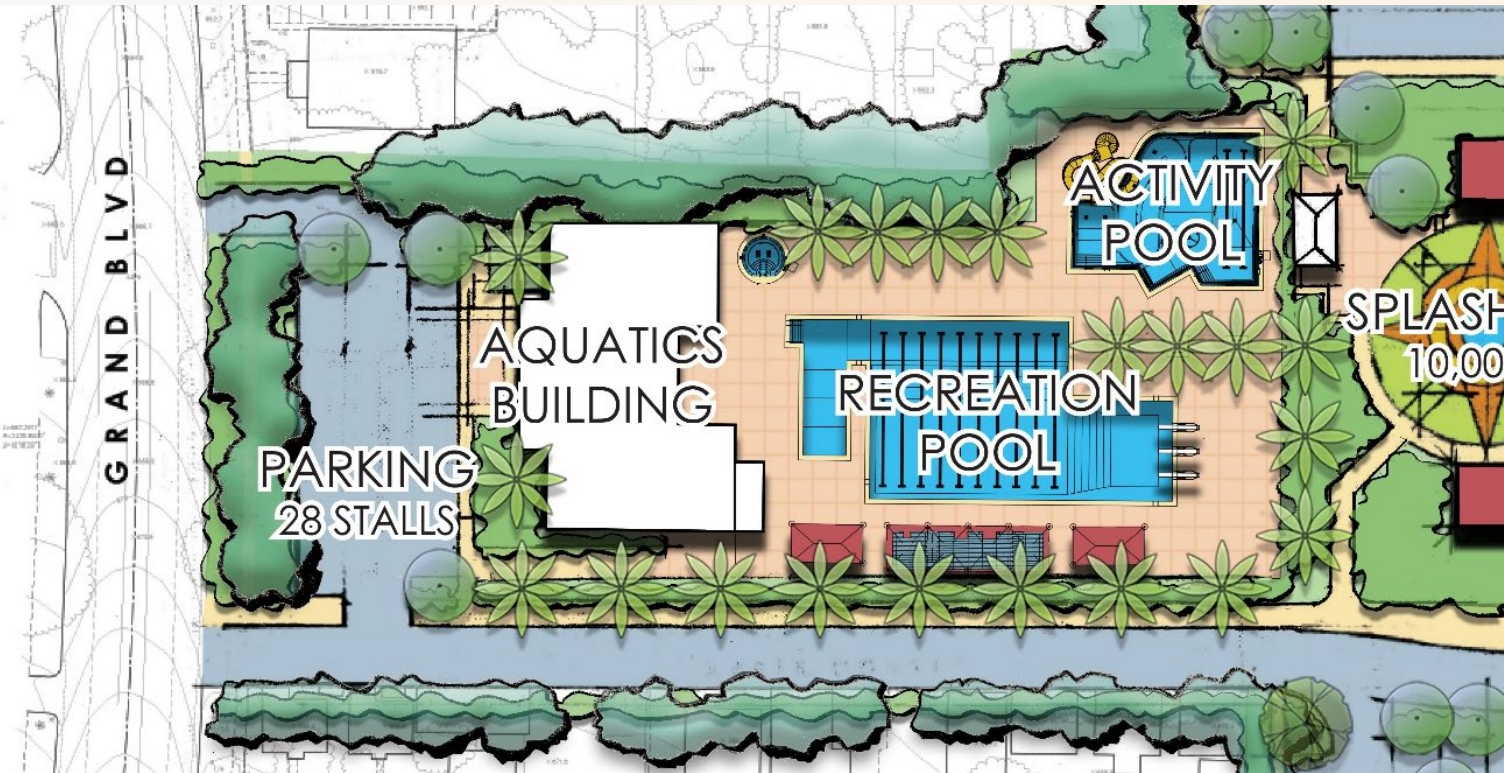
REFINED BUBBLE DIAGRAM



MASSING PLAN



PROGRAMMING



PROGRAM ELEMENTS

Aquatics Building (single-story) with Pool Equipment room, restrooms, and outdoor showers

Recreational pool (25yd x 25m) with beach entry and dedicated diving area – 12,000 S.F.

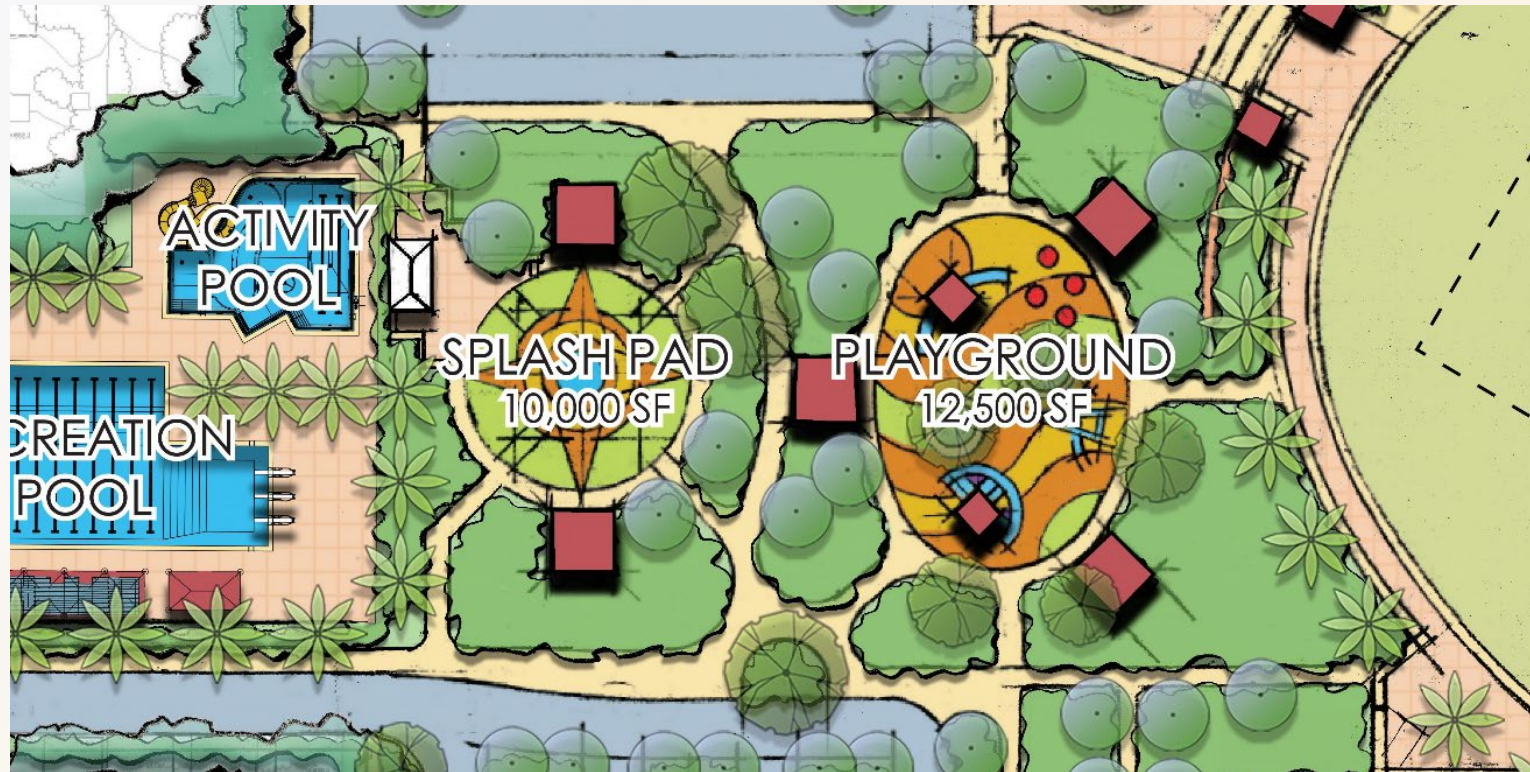
Activity Pool with waterslide and recirculating 'lazy river' – 3,685 S.F.

Spa – 250 S.F.

Spectator bleacher seating with shade structures



PROGRAMMING



PROGRAM ELEMENTS

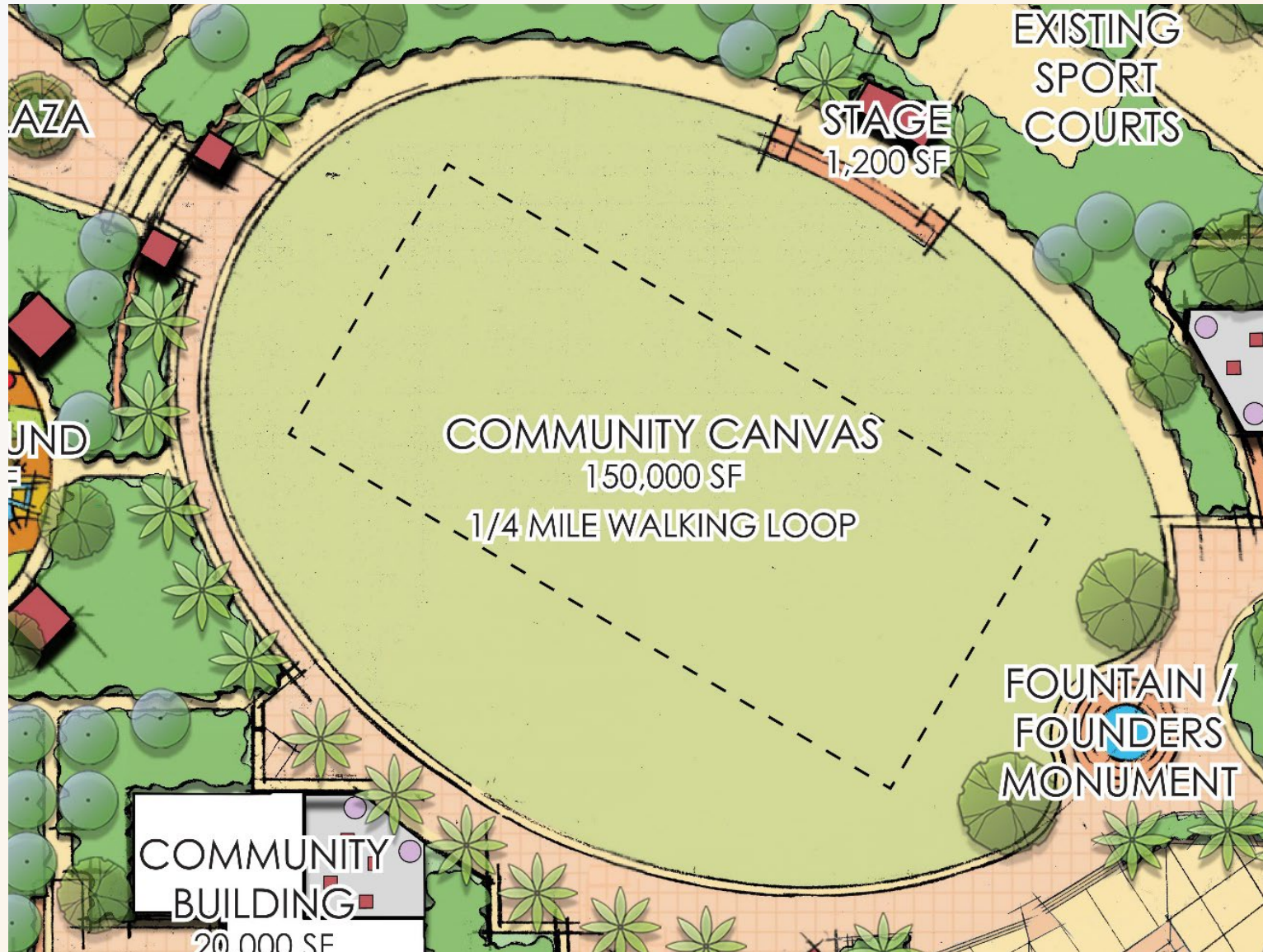
Iconic Splash Pad – 10,000 S.F.

Splash Pad restroom building with outdoor showers

Universal Playground (accessible and inclusive to all abilities) – 12,500 S.F.



PROGRAMMING



PROGRAM ELEMENTS

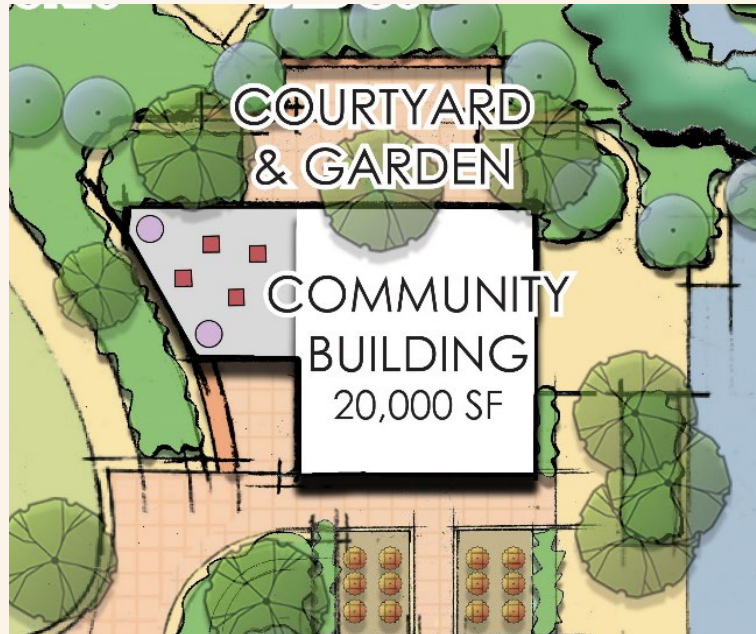
Community Canvas – 150,000 S.F.
Large gathering lawn located at the **heart of the park** for community events, concerts in the park, sporting events, etc.

1/4 Mile perimeter walking loop/trail

Event stage -1,200 S.F.



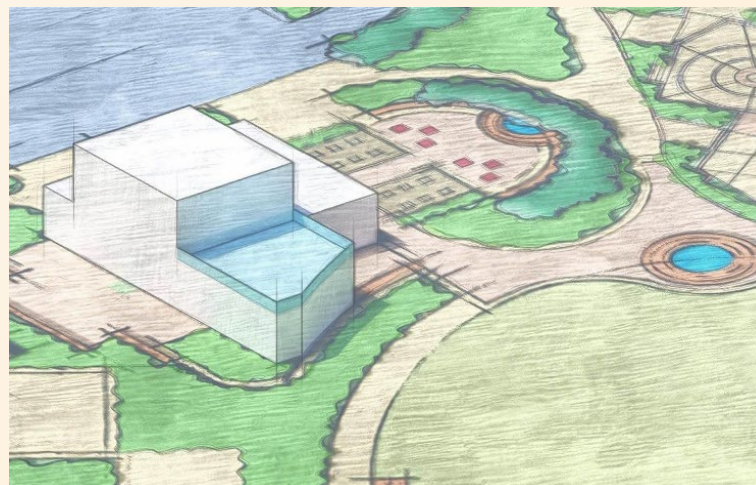
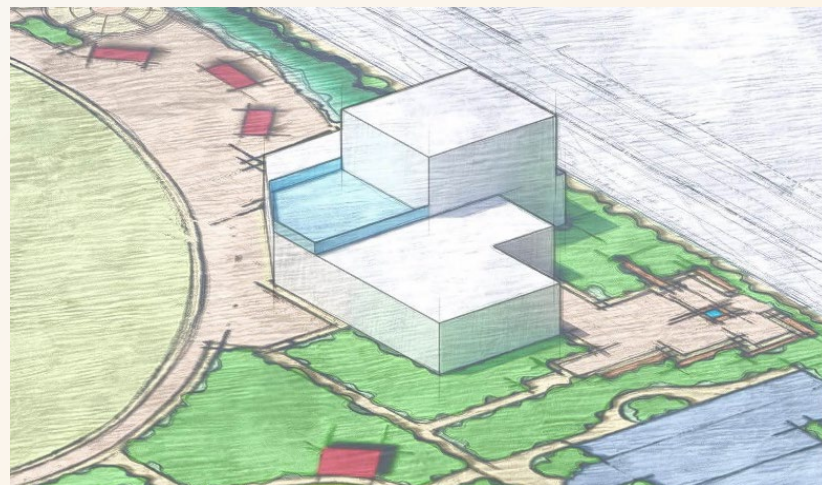
PROGRAMMING



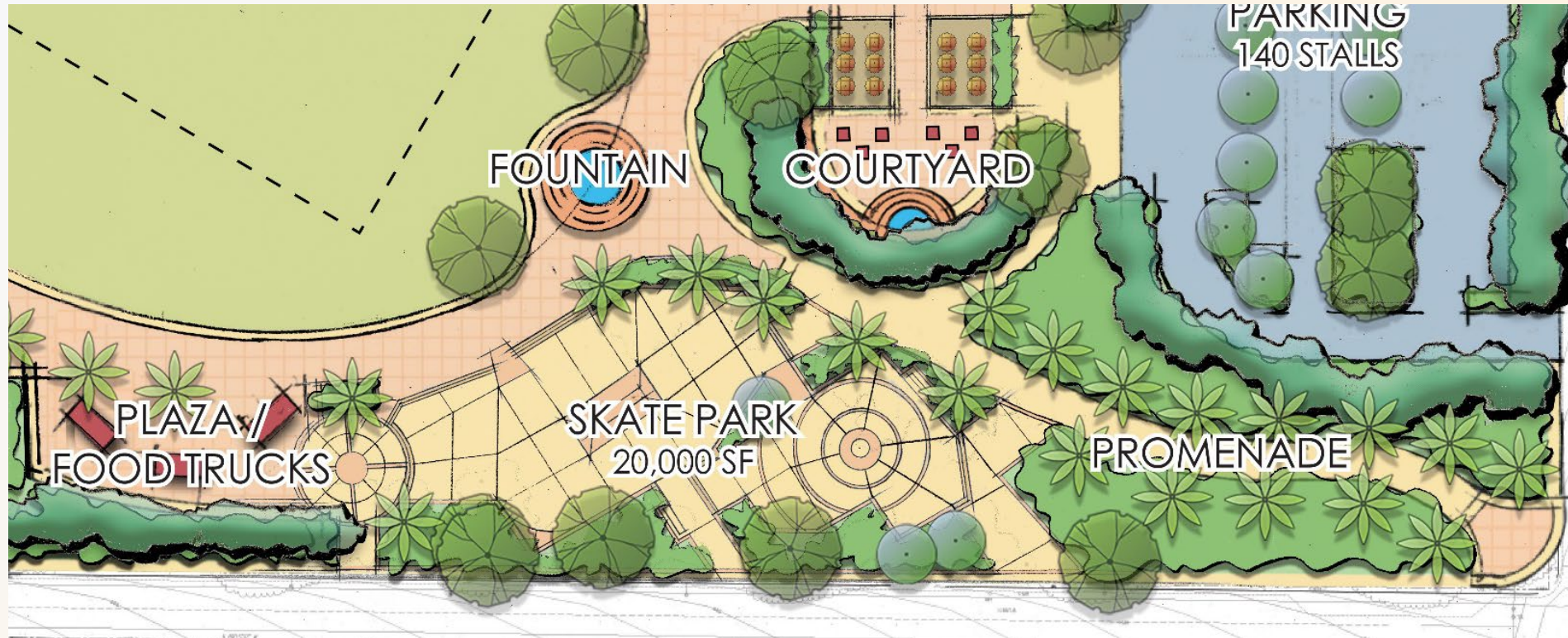
PROGRAM ELEMENTS

Two (2) Community Buildings – 20,000 SF

- Two-story buildings with roof decks overlooking the Community Canvas
- Large outdoor courtyard spaces for events/rental space



PROGRAMMING



PROGRAM ELEMENTS

All-wheel friendly
Skate Park – 20,000 S.F.

Plaza for Community Events/
Food Truck vendors

Central Fountain with
prominent location for the
Corona Founder's
Monument

Pedestrian Promenade

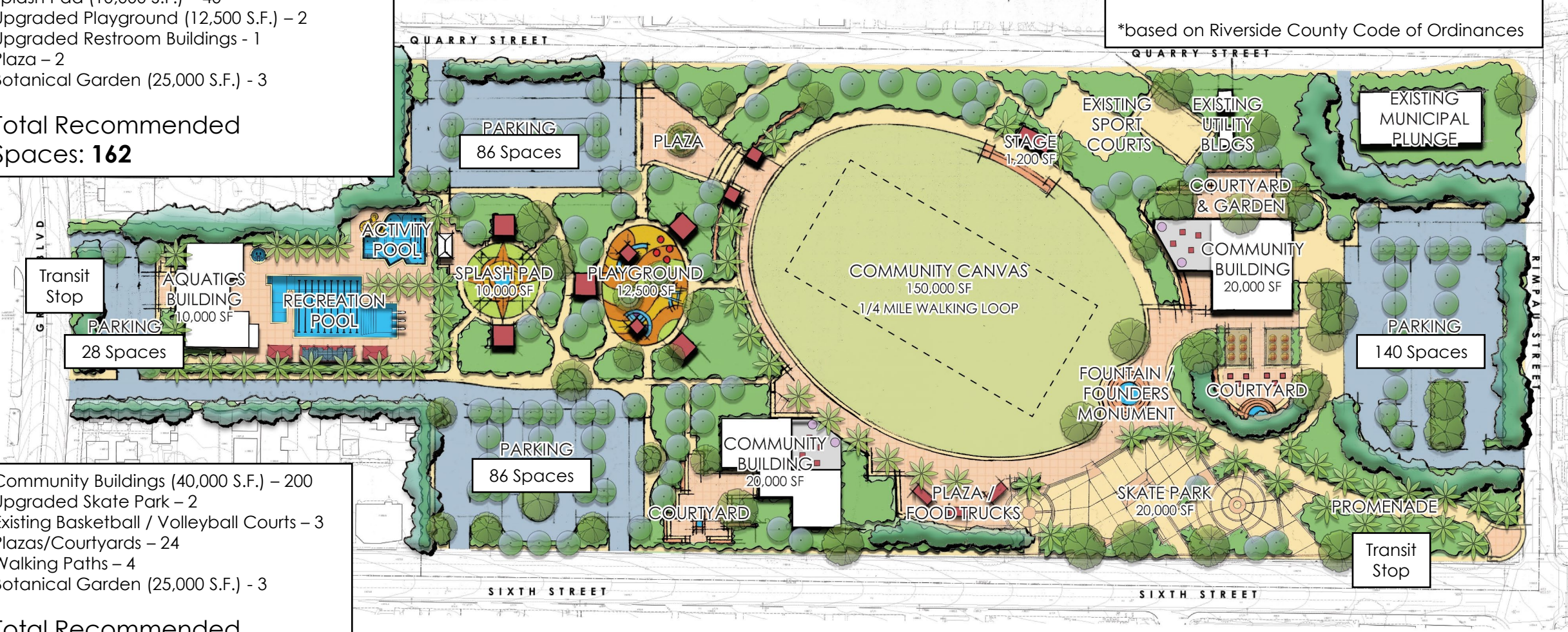


PROGRAMMING

- Aquatics Building (10,000 S.F.) – 50
 - Recreation Pool (12,000 S.F.) – 48
 - Activity Pool (3,685 S.F.) – 15
 - Spa (250 S.F.) – 1
 - Splash Pad (10,000 S.F.) – 40
 - Upgraded Playground (12,500 S.F.) – 2
 - Upgraded Restroom Buildings - 1
 - Plaza – 2
 - Botanical Garden (25,000 S.F.) - 3
- Total Recommended Spaces: 162**

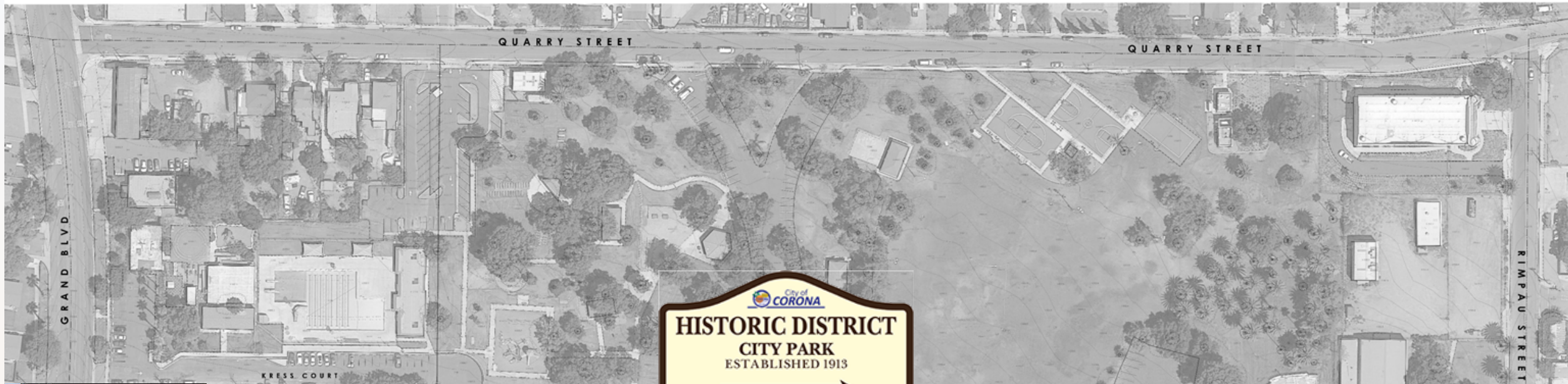
Proposed on-site parking: 340
 + Proposed on-street parking: 58
Total Proposed Parking: 398 spaces

**based on Riverside County Code of Ordinances*



- Community Buildings (40,000 S.F.) – 200
 - Upgraded Skate Park – 2
 - Existing Basketball / Volleyball Courts – 3
 - Plazas/Courtyards – 24
 - Walking Paths – 4
 - Botanical Garden (25,000 S.F.) - 3
- Total Recommended Spaces: 236**

HISTORY



CHPS
Historic Site
Marker #23

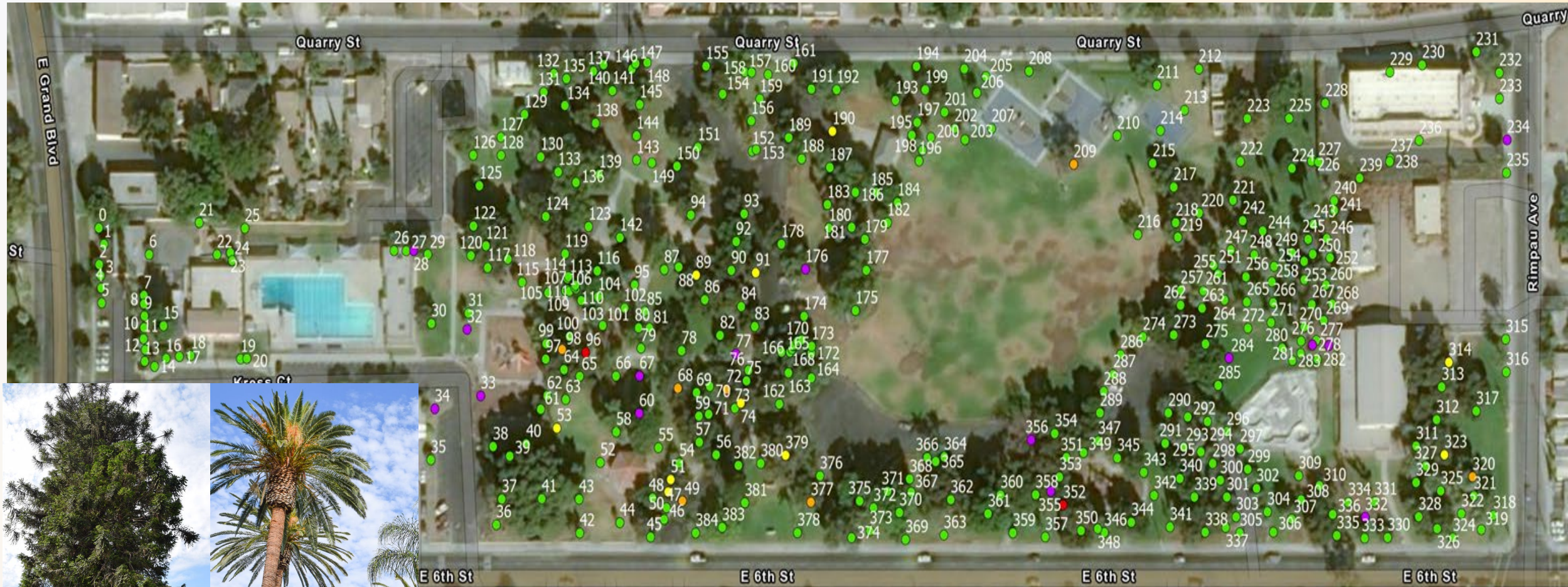
Existing
Stone to be
Salvaged &
Repurposed

Scene in City Park, Corona, Cal.

Historic
Farm
Equipment

Corona
Founder's
Monument

HISTORY



West Coast Arborists - Tree Inventory

Tree Condition

- Good
- Fair
- Poor
- Dead
- N/A

Total Existing Trees: 384

- Existing Trees in Poor/Fair Condition to be Removed: 20
- Existing Trees to be Removed for Site Improvements: 169
- + Existing Trees to be Relocated: 38
- + Existing/Historic Trees Preserved: 157
- + Proposed New Trees: 189

Total Trees: 384



CITY PARK MASTER PLAN

Parks and Recreation Commission Meeting Project Update

MAY 9, 2023
PRESENTED BY: RJM DESIGN GROUP