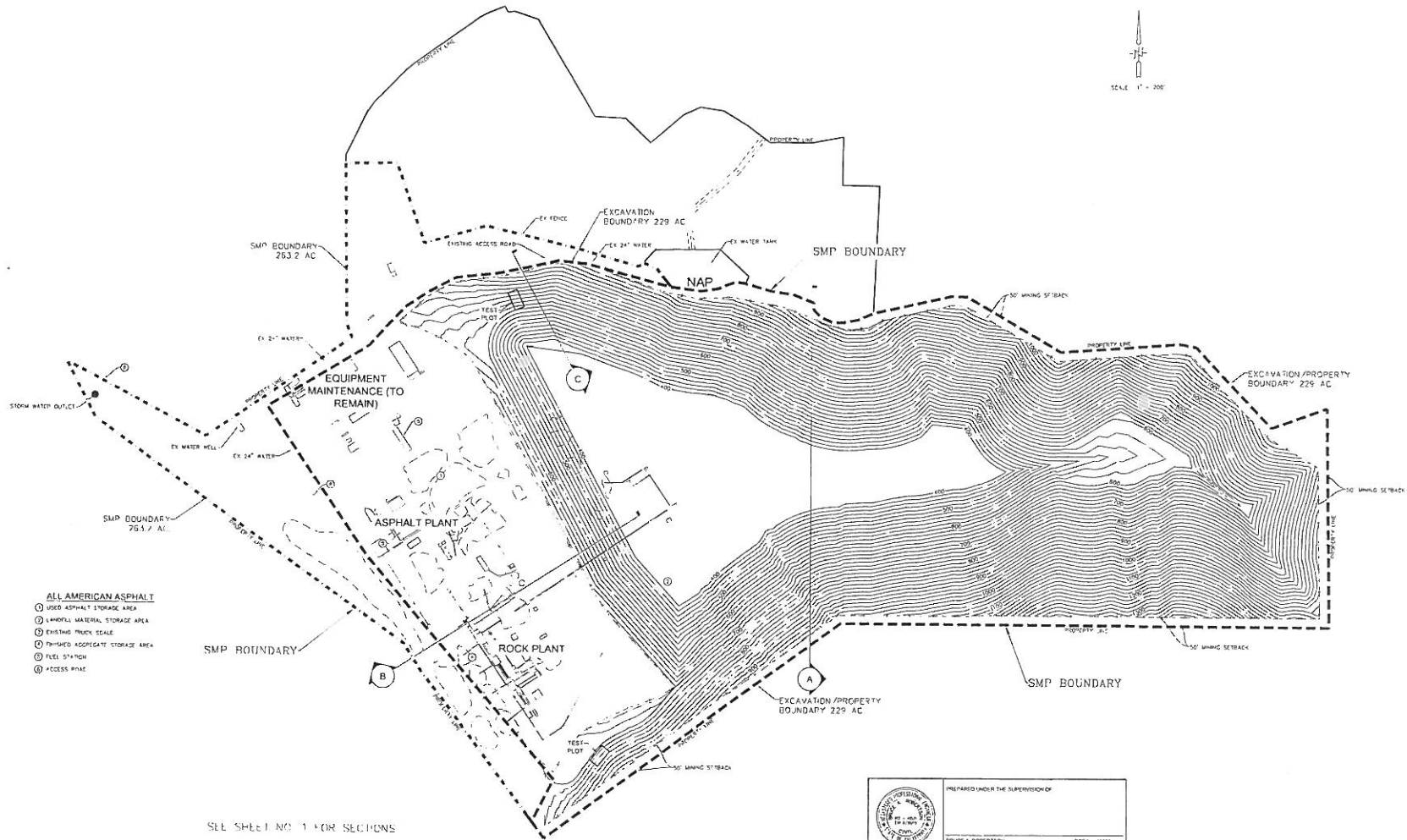


PHASE 1

CY CUT = 50,860,000 (Down to 500')  
 CY CUT = 56,300,000 (Down to 400')  
 AREA = 165.9 AC

ALL AMERICAN ASPHALT  
 S.M.P. 95-1  
 COMPREHENSIVE MINING PLAN  
 AMENDMENT NO. 2 JULY 2017



- ALL AMERICAN ASPHALT**
- ① USED ASPHALT STORAGE AREA
  - ② LANDFILL MATERIAL STORAGE AREA
  - ③ EXISTING PILE SCALE
  - ④ FINISHED AGGREGATE STORAGE AREA
  - ⑤ FUEL STATION
  - ⑥ ACCESS ROAD

SEE SHEET NO. 1 FOR SECTIONS

	PREPARED UNDER THE SUPERVISION OF		
	BRUCE A. ROBERTSON	REG. NO. 45838	
		Civil Engineering-Environmental Land Surveying 2442 Second Avenue San Diego, CA 92106 Corporation: S. 912 8818/227-9200 (619)333-9210 (4)	ALL AMERICAN ASPHALT CORONA PLANT S.M.P. 95-1 AMENDMENT NO. 2
SCALE DATE	BENCH MARK	SHEET NO. 2	OF 7 SHEETS
PREPARED BY DATE		FOR ALL AMERICAN ASPHALT	REF NO.