

# Sales Tax Update 1st Quarter 2023

(Jan.-Mar. 2023 vs Jan.-Mar. 2022 Results)

City of Corona

HdL<sup>®</sup> Companies



*City of Corona, CA*





# Bradley-Burns Regional Report

## 1Q23 Adjusted\* Sales Tax Growth

Region	1Q23 vs 1Q22 % Change
Corona	+6.6%
Riverside County	-1.5%
Southern California	-0.9%
California	-1.1%

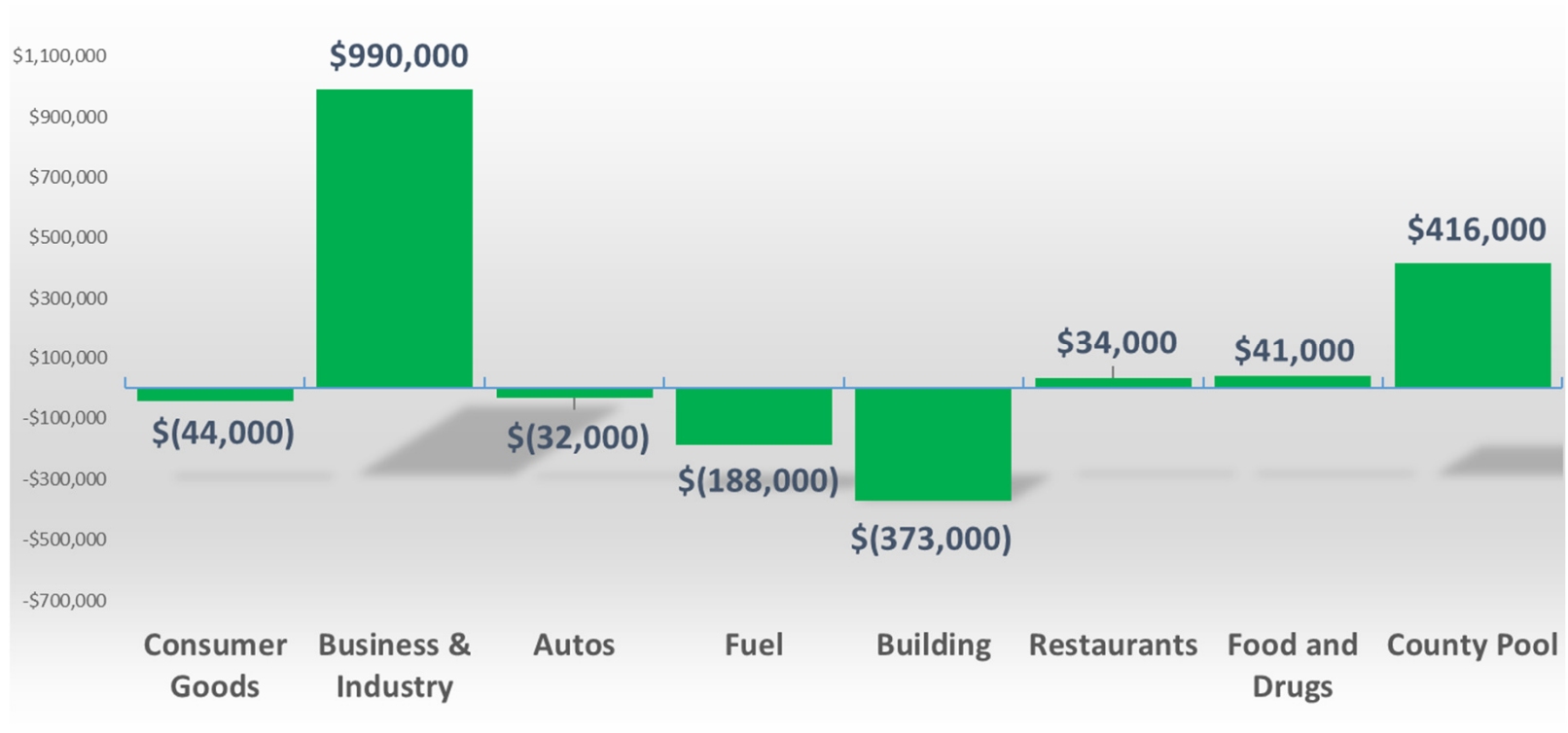
*\*Adjusted indicates that where there are aberrations associated with payment timing, the payment is presented in the quarter in which the sales transaction occurred, not when the cash was received, to better reflect underlying economic activity and results.*



# Corona Major Industry Group Performance

## 1Q23 Change in Adjusted Sales Tax by Category (vs 1Q22)

+\$0.8M / +6.6% Overall



# CORONA MAJOR INDUSTRY GROUPS (5 Largest)

**Business And Industry**

Count: 1,553

**Building And Construction**

Count: 253

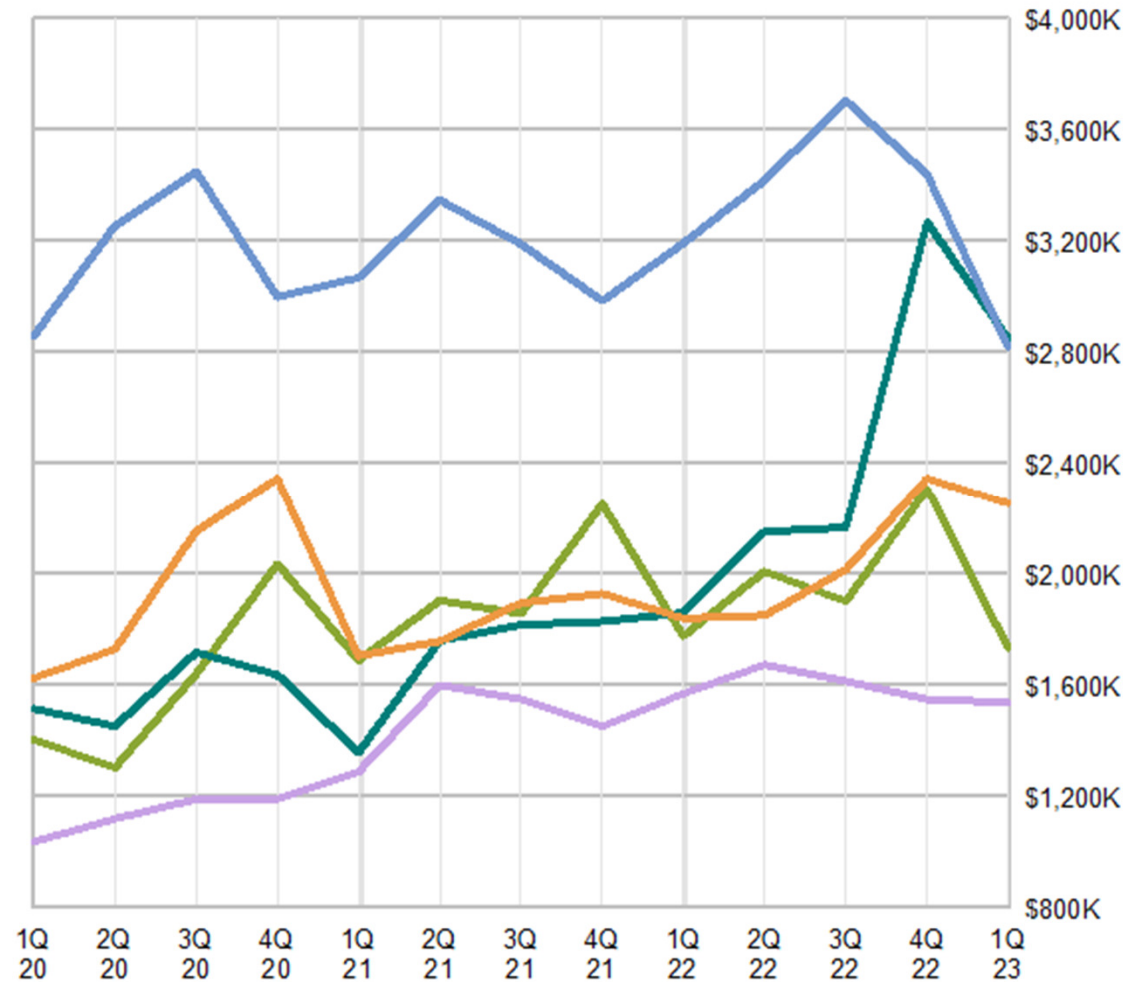
**State & County Pools**

**General Consumer Goods**

Count: 1,453

**Autos And Transportation**

Count: 435

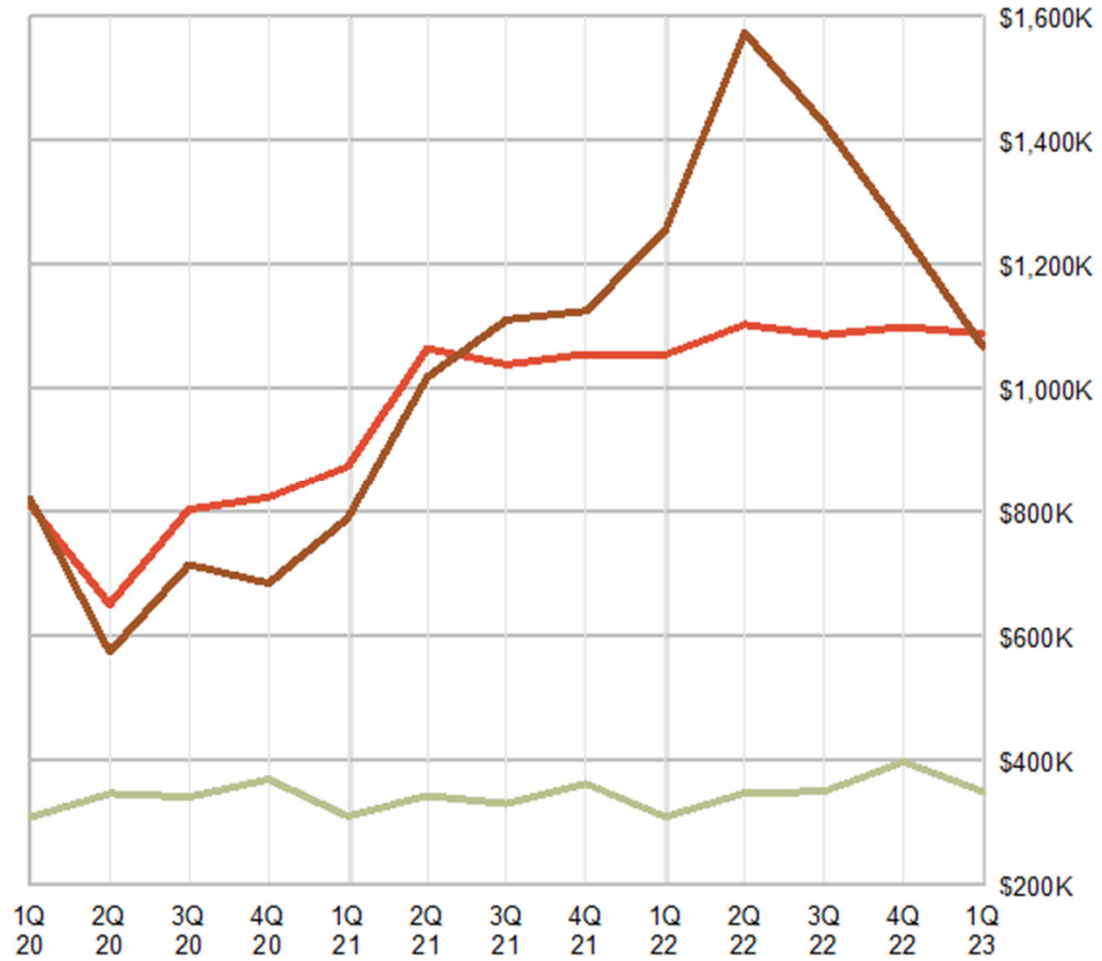


# CORONA MAJOR INDUSTRY GROUPS (Remaining 3)

Restaurants And Hotels  
Count: 467

Fuel And Service Stations  
Count: 56

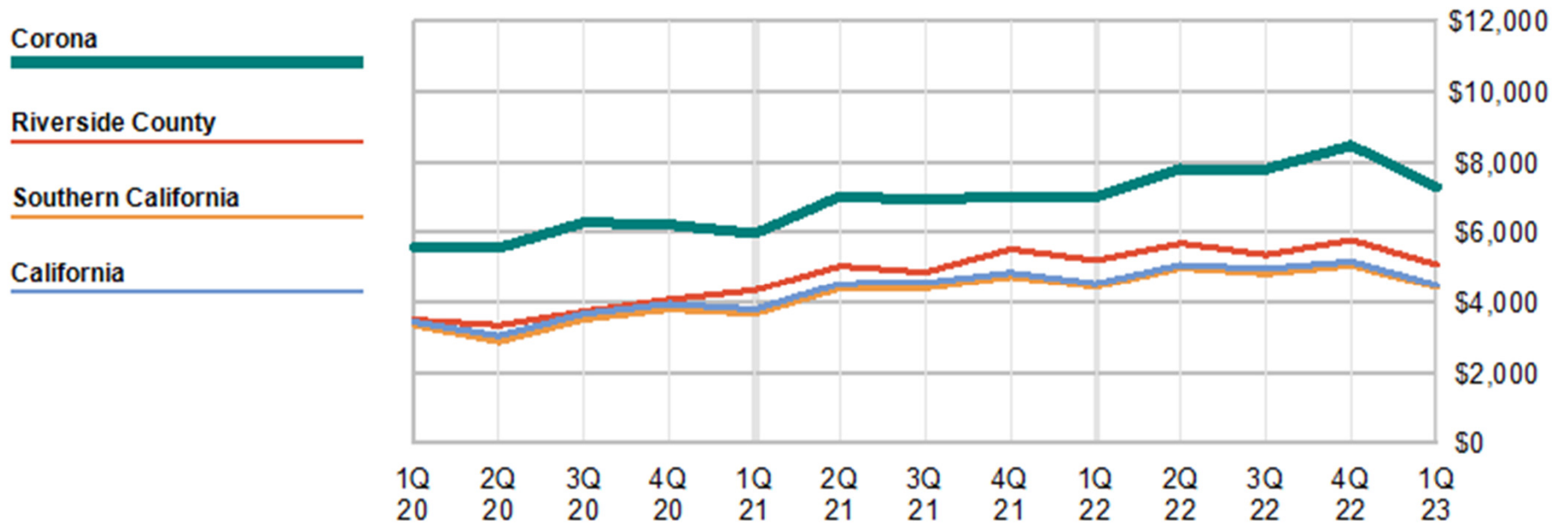
Food And Drugs  
Count: 145





# Regional Comparison

*Per Capita Adjusted Sales Tax Graph*

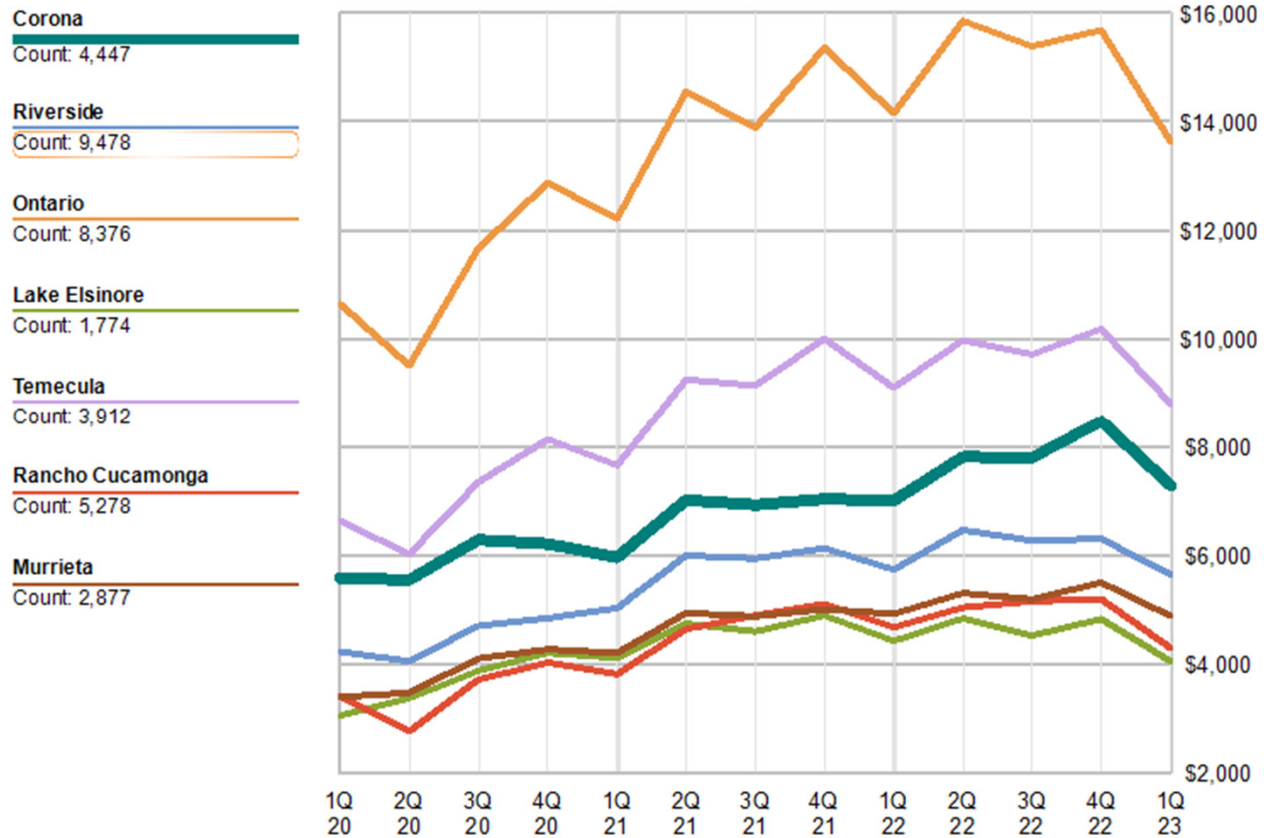


Periods shown reflect the period in which the sales occurred - Point of Sale



# City Comparison 1

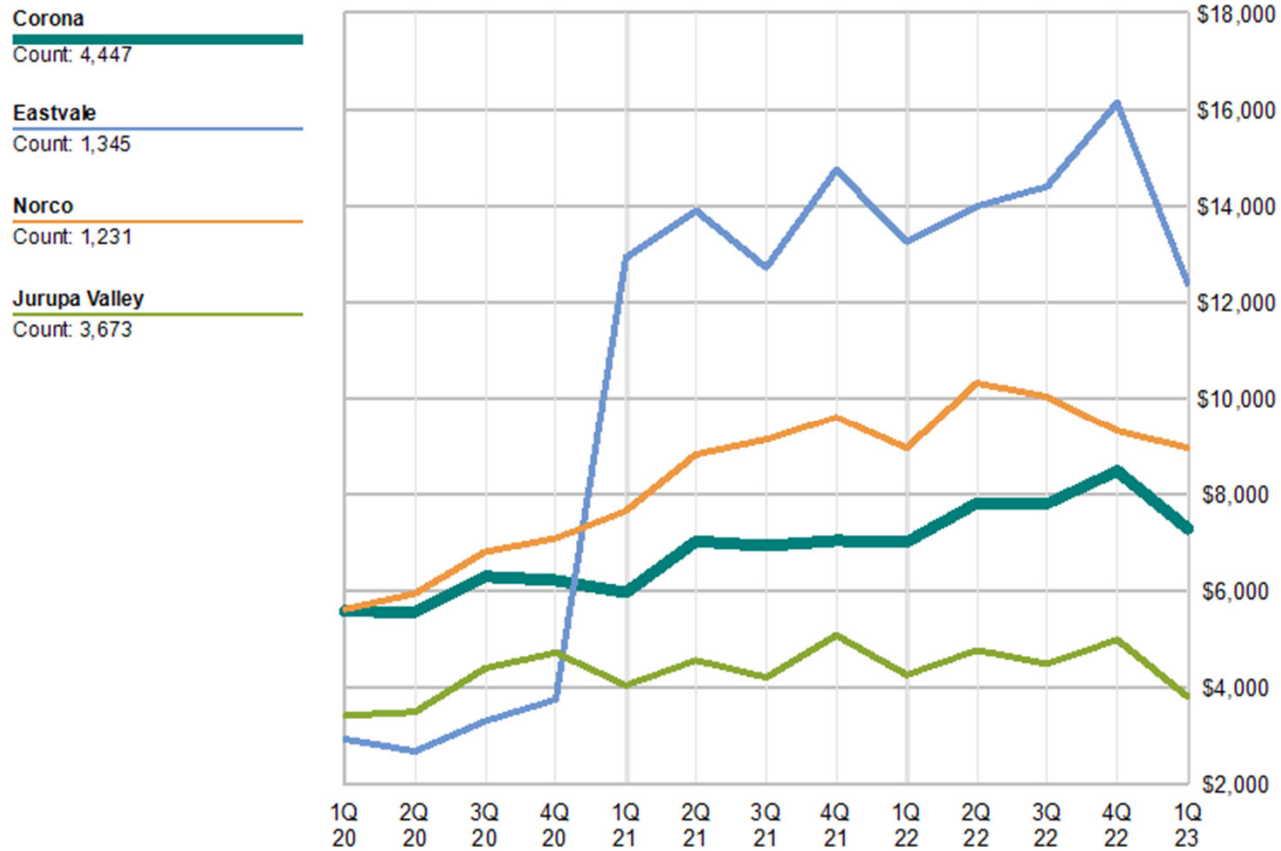
## Per Capita Adjusted Sales Tax Graph





# City Comparison 2

## Per Capita Adjusted Sales Tax Graph

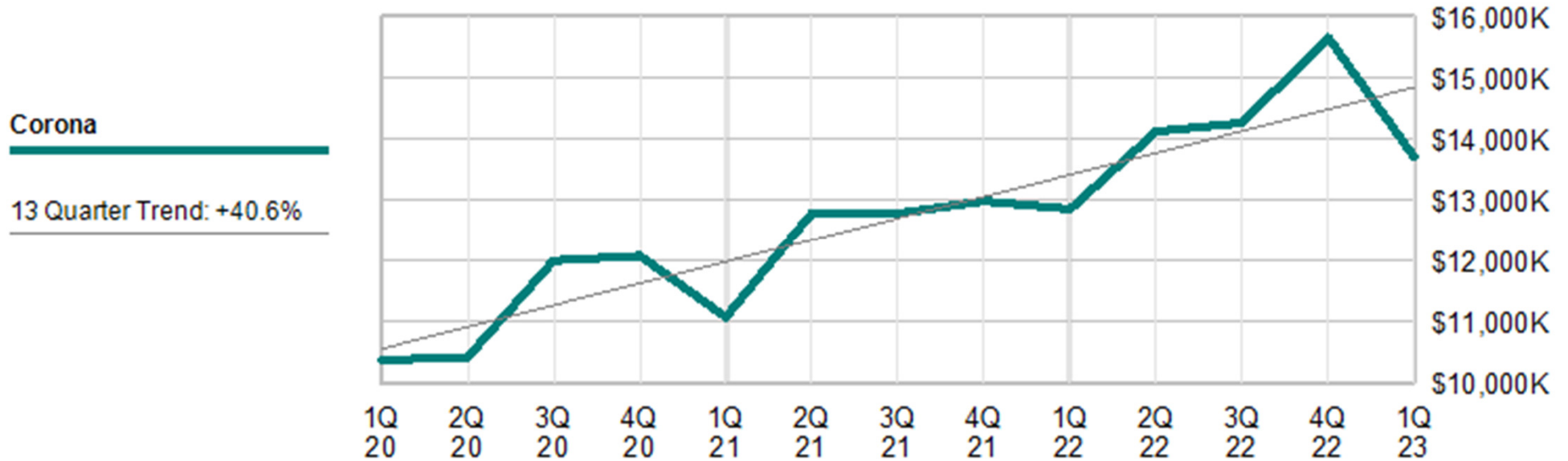






# Corona Long-Term Sales Tax Trend

Adjusted Point-of-Sale Receipts: 13-quarter trend: +40.6%





# Corona Measure X *(Adjusted results)*

Last Four-Quarters: \$44.6M  
(77.8% of Bradley-Burns Tax Receipts)

