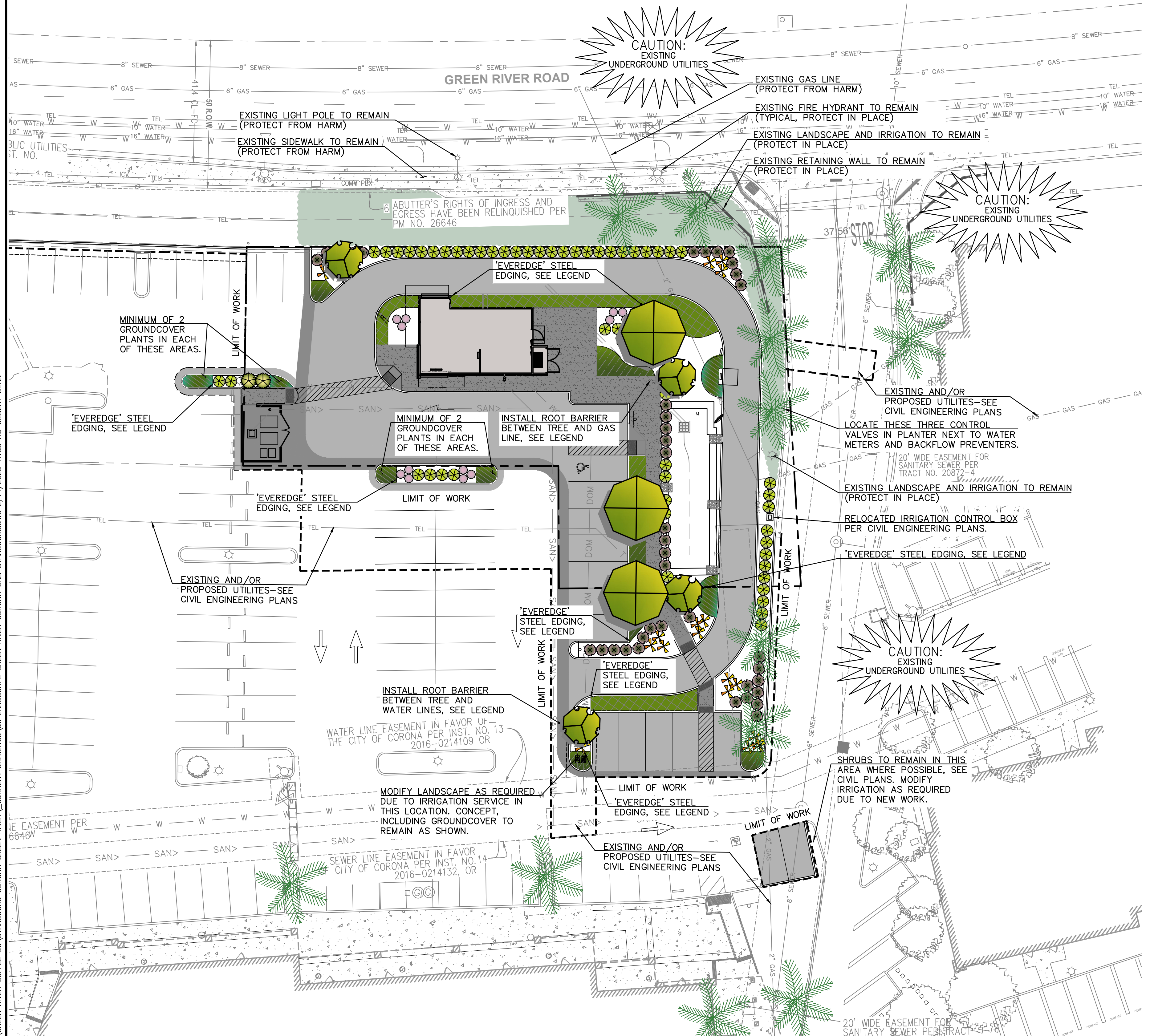
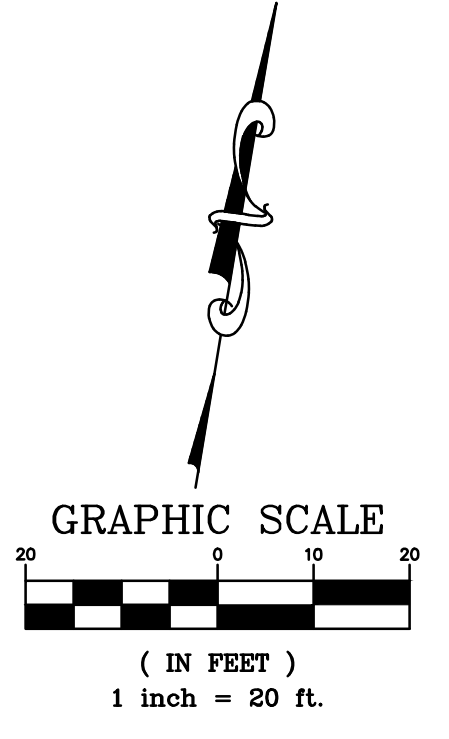


- GENERAL NOTES:**
1. LANDSCAPE PLANS AND INSTALLATION SHALL ADHERE TO CITY DESIGN GUIDELINES, CODES AND REGULATIONS.
 2. OTHER THAN MODERATE WATER USE REQUIREMENTS FOR THE CRAPE MYRTLE, ALL OTHER PLANTS SPECIFIED ARE LOW WATER USE.
 3. ALL ABOVE GROUND UTILITIES AND TRASH ENCLOSURE SHALL BE SCREENED WITH SHRUBS OR OTHER APPROVED ARCHITECTURAL OR LANDSCAPE TREATMENT, EXCEPT POSSIBLY BACKFLOW DEVICE.
 4. ALL PLANTING AREAS SHALL BE DRESSED WITH A 3" LAYER OF MULCH, EXCEPT GROUNDCOVER PLANTED FROM FLATS WHERE MULCH DEPTH SHALL BE 1-1/2".
 5. ALL LANDSCAPING INSTALLED AS A RESULT OF THESE PLANS SHALL BE PERMANENTLY MAINTAINED.
 6. RHUS LANCEA MUST HAVE A STRONG CENTRAL LEADER AT THE TIME IT IS PURCHASED.



LEGEND:

SYMBOL	SCIENTIFIC NAME	COMMON NAME	CONTAINER	FLWR.COLOR	QTY	WUCOLS REGION 4
--------	-----------------	-------------	-----------	------------	-----	-----------------

EXISTING TREES

- EXISTING PALMS TO REMAIN (SOME SHOWN FOR REFERENCE)
- EXISTING TREES TO REMAIN (SHOWN FOR REFERENCE)

TREES (SIZES PER AGENCY REQUIREMENTS)

	LAGERSTROEMIA INDICA X FAURIEI 'NATCHEZ'	NATCHEZ CRAPE MYRTLE	15 GALLON	WHITE	3	MODERATE
	RHUS LANCEA (MALE)	AFRICAN SUMAC	24" BOX	RED	3	LOW

SHRUBS (SIZES PER AGENCY REQUIREMENTS)

	CALLISTEMON 'LITTLE JOHN'	DWARF CALLISTEMON	5 GALLON	RED	41	LOW
	HESPERALOE PARVIFLORA	RED YUCCA	1 GALLON	RED	25	LOW
	MUHLENBERGIA CAPILLARIS	PINK MUHLY GRASS	1 GALLON	PINK	21	LOW
	RHUS LENTII	PINK-FLOWERING SUMAC	15 GALLON	PINK	6	LOW
	SALVIA CLEVELANDII 'WINNFRED GILMAN'	CLEVELAND SAGE	5 GALLON	BLUE-PURPLE	62	LOW

EXISTING LANDSCAPE, GROUND COVER, MULCH AND MISCELLANEOUS

	LANTANA MONTEVIDENSIS	TRAILING LANTANA	FLATS @ 2' O.C	PURPLE	585 SF	LOW
	MYOPORUM PARVIFOLIUM	MYOPORUM	FLATS @ 4' O.C	WHITE	205 SF	LOW
	ROSMARINUS OFFICINALIS 'LOCKWOOD DE FOREST'	ROSEMARY	1 GAL @ 4' O.C	LIGHT BLUE	745 SF	LOW
		EXISTING LANDSCAPE TO REMAIN				
		CEDAR MULCH OR AGENCY AND CLIENT APPROVED EQUAL, (MIN. 3" DEPTH W/ WEED BARRIER FABRIC)				SEE GENERAL NOTES BELOW REGARDING DEPTH.
		EVEREDGE STEEL EDGING (GARDEN RING WHERE NOTED)				LINEAR FEET PER PLAN

NOTE: INSTALL CUTEX COPPER COMPOSITE ROOT BARRIER, BY GEOFABRICS WHERE NOTED, CONSULT WITH MANUFACTURER FOR INSTALLATION REQUIREMENTS AND LOCATION PER SITE CONDITIONS
 GEOFABRICS CONTACT: PHONE: 1(816)305-3160
 EMAIL: SALES@GEOFABRICS.COM

LANDSCAPE TABULATION

TOTAL LANDSCAPE AREA:	4,872 S.F.
TOTAL PROPOSED TREES:	6

WATER CONSERVATION STATEMENT

THE PROPOSED LANDSCAPING IS LOCATED IN THE GREEN RIVER PROMENADE SHOPPING CENTER. ALL PLANT MATERIAL SPECIFIED IS APPROPRIATE FOR THE LOCATION INCLUDING BASED ON THE LOCAL CLIMATE AND THEIR ADAPTABILITY TO DROUGHT SITUATIONS. MAJORITY OF THE PLANT MATERIAL IS FROM THE CITIES PLANT LIST, WITH OTHER PLANTS BEING WUCOLS MATERIAL LIST APPROPRIATE FOR THE AREA AS NOTED ABOVE. NO HIGH WATER USE PLANT MATERIALS ARE SPECIFIED.

THE IRRIGATION SYSTEM INCORPORATES USE OF DRIP IRRIGATION APPROPRIATE FOR THE PLANT SELECTION AND SPACING, WITH TREES ON SEPARATE VALVES FROM OTHER PLANT MATERIAL. TREES WITH DIFFERENT WATER USES CLASSIFICATIONS WILL ARE ON SEPARATE IRRIGATION VALVES. RAIN SHUT DEVICE ALONG WITH AUTOMATIC CONTROLLER IS SPECIFIED ON THE IRRIGATION SYSTEM.



EXHIBIT 19



PROJECT NO.	DATE	DESCRIPTION
JM-GR21000	08/22/22	INITIAL SUBMITTAL
	11/23/22	FOURTH SUBMITTAL
	01/20/23	FIFTH SUBMITTAL