



# Griffin Park Update and Discussion

**Parks and Recreation Commission**



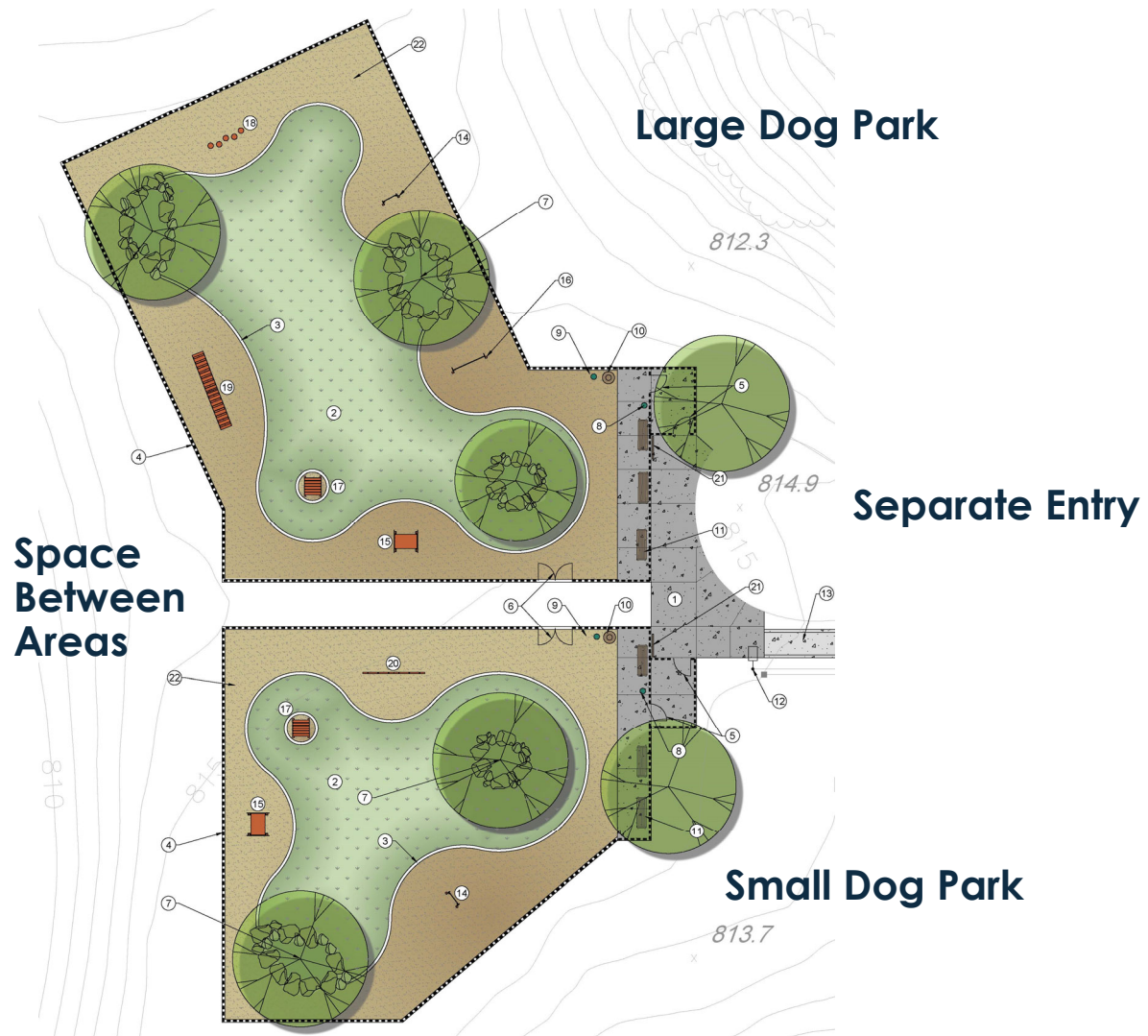
**Tracy Martin**

February 12, 2020



Three vertical bars of different colors (yellow, dark blue, and light green) are positioned on the left side of the slide.

# Dog Park Details





# Amenities



⑧ LEASH POST  
BARK PARK



⑨ PET WASTE STATION  
BARK PARK



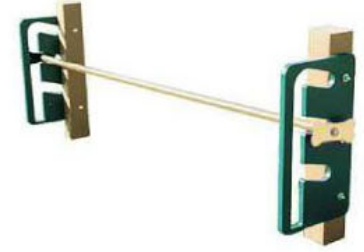
⑪ BACKLESS BENCH  
WEB COAT



⑭ RING JUMP  
BARK PARK



⑮ CRAWL TUNNEL  
BARK PARK



⑯ DOG JUMP  
BARK PARK



⑰ GROOMING TABLE  
BARK PARK



⑱ STEPPING PAWS  
BARK PARK



⑲ HILLTOP CHALLENGE  
BARK PARK



⑳ ROOKIE WEAVE POSTS  
BARK PARK



㉑ WELCOME SIGN  
BARK PARK





# Fitness Area

Equipment Discussion



## Trees for Shade



## Basic Exercise Equipment



⑦ DRINKING FOUNTAIN W/ WATER  
BOTTLE FILLER AND PET STATION  
ELKAY



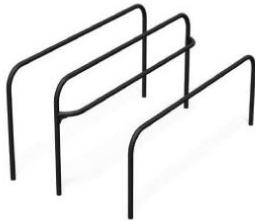
⑨ BIKE RACK  
WEB COAT



⑩ ROMAN CHAIR SQUAT  
GAME TIME



⑪ BENCH DIP STATION  
GAME TIME



⑫ ACCESSIBLE PARALLEL BARS  
GAME TIME



⑬ COMBINATION HUB  
GAME TIME



⑭ TRAPEZE RACK  
GAME TIME



⑮ CAPTAIN'S CHAIR  
GAME TIME



⑯ SIT-UP/BACK EXTENSION  
GAME TIME



⑰ STEP-UP STATION  
GAME TIME



⑱ BALANCE BOARD STATION  
GAME TIME

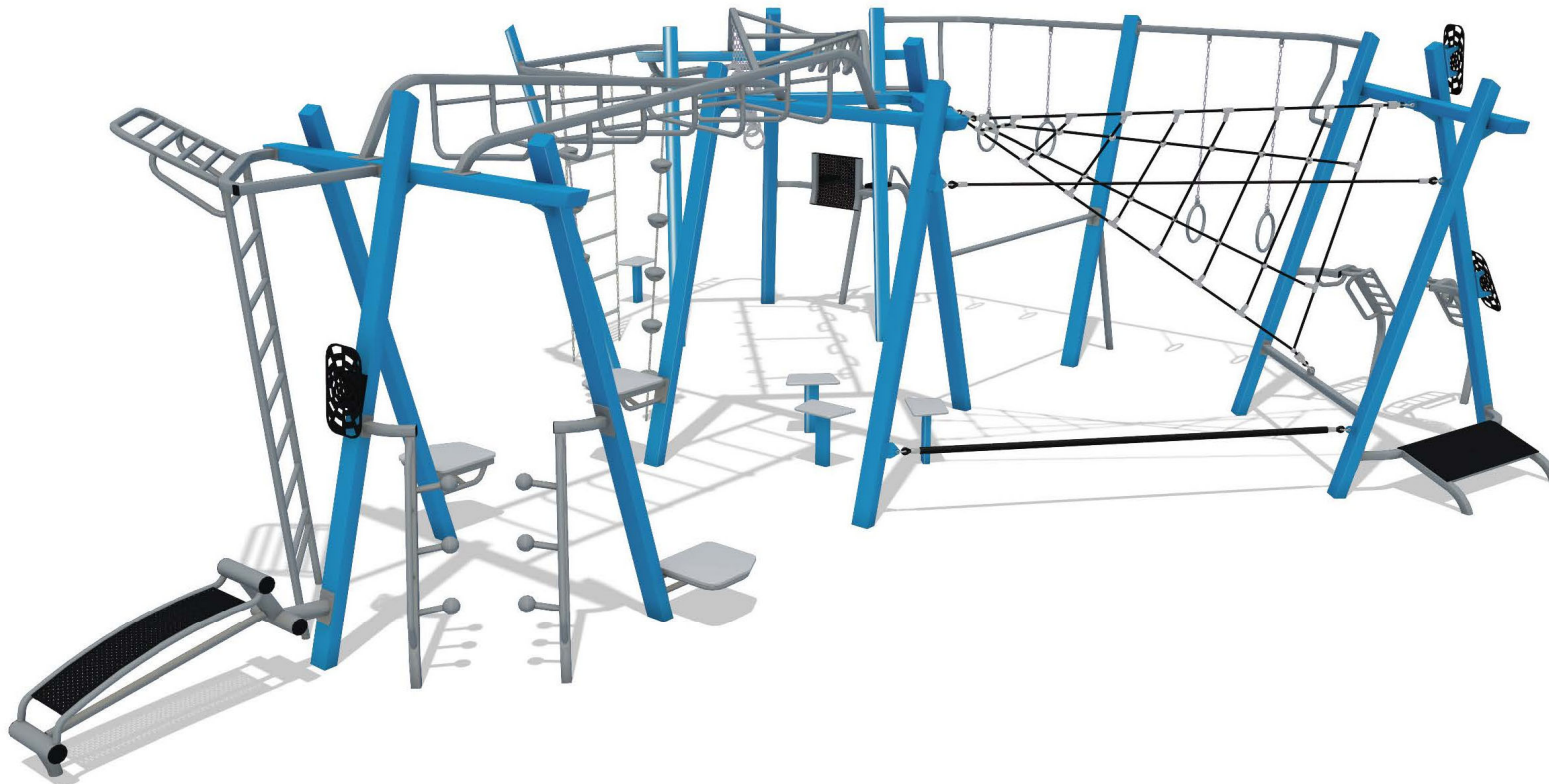


⑲ ACCESSIBLE SHOULDER ROTATOR  
GAME TIME

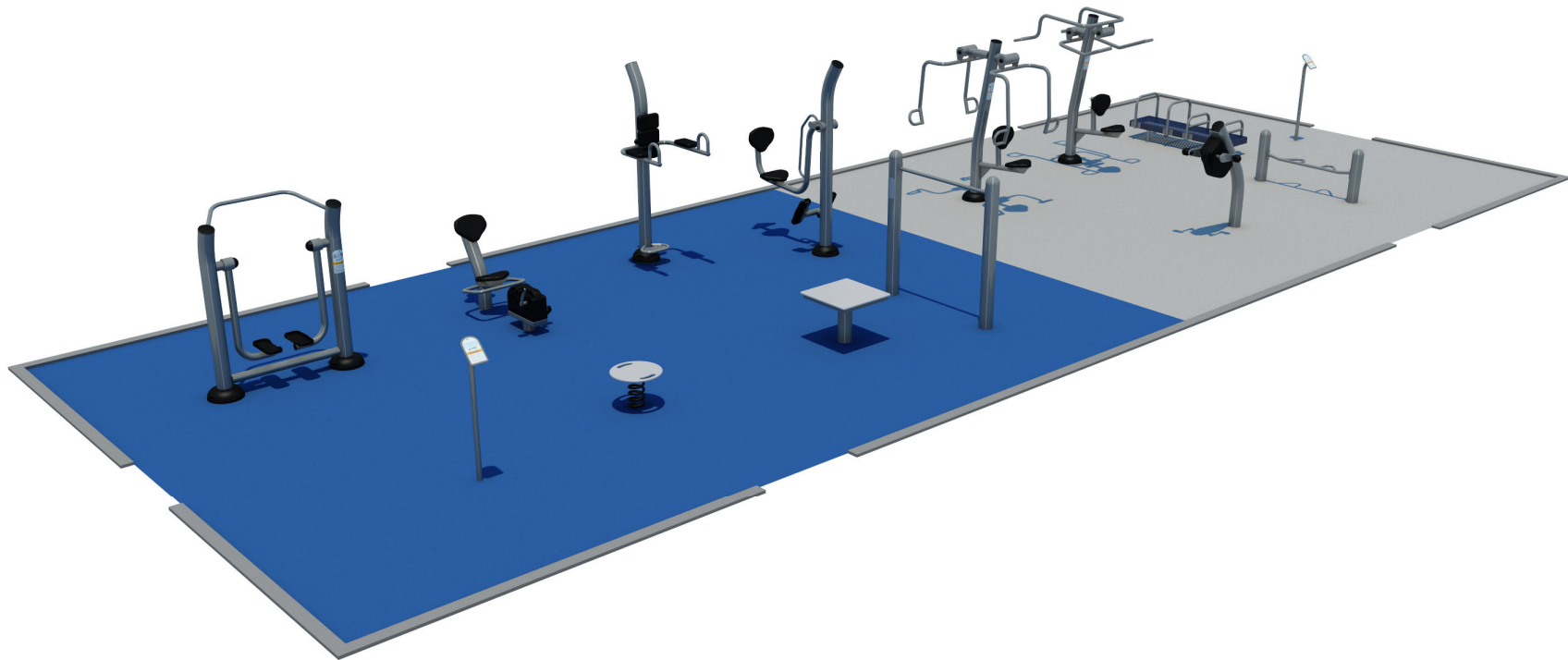




## One-Piece Fitness System



## Thrive System



## Muscle Fitness



Accessible Lat Pull Down

#132721 \$5,302

Use Zone: 9'10" x 10'6" (3m x 3.2m)



Lat Pull Down

#135561 \$3,948

Use Zone: 9'9" x 10'9" (3m x 3.3m)



Accessible Chest Press

#132711 \$5,284

Use Zone: 9'10" x 12'7" (3m x 3.8m)



Chest Press

#135551 \$3,807

Use Zone: 9'10" x 10'8" (3m x 3.3m)



Leg Extension

#135631 \$2,767

Use Zone: 8'2" x 9'9" (2.5m x 3m)



Leg Press

#135591 \$4,008

Use Zone: 7'8" x 10'10" (2.3m x 3.3m)



Accessible Vertical Press

#132741 \$5,281

Use Zone: 9'10" x 12'7" (3m x 3.8m)



Vertical Press

#135571 \$3,931

Use Zone: 9'10" x 10'8" (3m x 3.3m)



## Aerobic Fitness Equipment



**Accessible Hand Cycle**  
 #149251 \$4,399  
 Use Zone: 11'7" x 11'10" (3.5m x 3.6m)



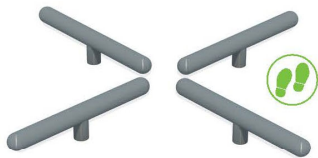
**Hand Cycle**  
 #149241 \$4,499  
 Use Zone: 11'7" x 12'3" (3.5m x 3.7m)



**Recumbent Cycle**  
 #149221 \$4,299  
 Use Zone: 11'10" x 12'4" (3.6m x 3.8m)



**Cardio Walker**  
 #135621 \$4,008  
 Use Zone: 10'7" x 11'3" (3.2m x 3.4m)



**Log Hop Station**  
 #13573 \$1,223  
 Use Zone: 12'4" x 12'4" (3.7m x 3.7m)



**Hurdle Station**  
 #13576 \$418  
 Use Zone: 10'2" x 17'2" (3.1m x 5.2m)



**High Jump Station**  
 #13578 \$732  
 Use Zone: 8'4" x 14'10" (2.5m x 4.5m)



**Step-Up Station**  
 #13569 \$1,365  
 Use Zone: 13'9" x 15'2" (4.2m x 4.6m)



## Shade / Picnic Area





# QUESTIONS?



951-817-5880



Tracy.Martin@CoronaCA.gov



www.CoronaCA.gov





[www.CoronaCA.gov](http://www.CoronaCA.gov)

