

# Sales Tax Update 2nd Quarter 2023

(April-June 2023 vs April-June 2022 Results)

City of Corona

HdL<sup>®</sup> Companies



*City of Corona, CA*





# Bradley-Burns Regional Report

## 2Q23 Adjusted\* Sales Tax Growth

Region	2Q23 vs 2Q22 % Change
Corona	+10.3%
Riverside County	-2.9%
Southern California	-2.9%
California	-2.9%

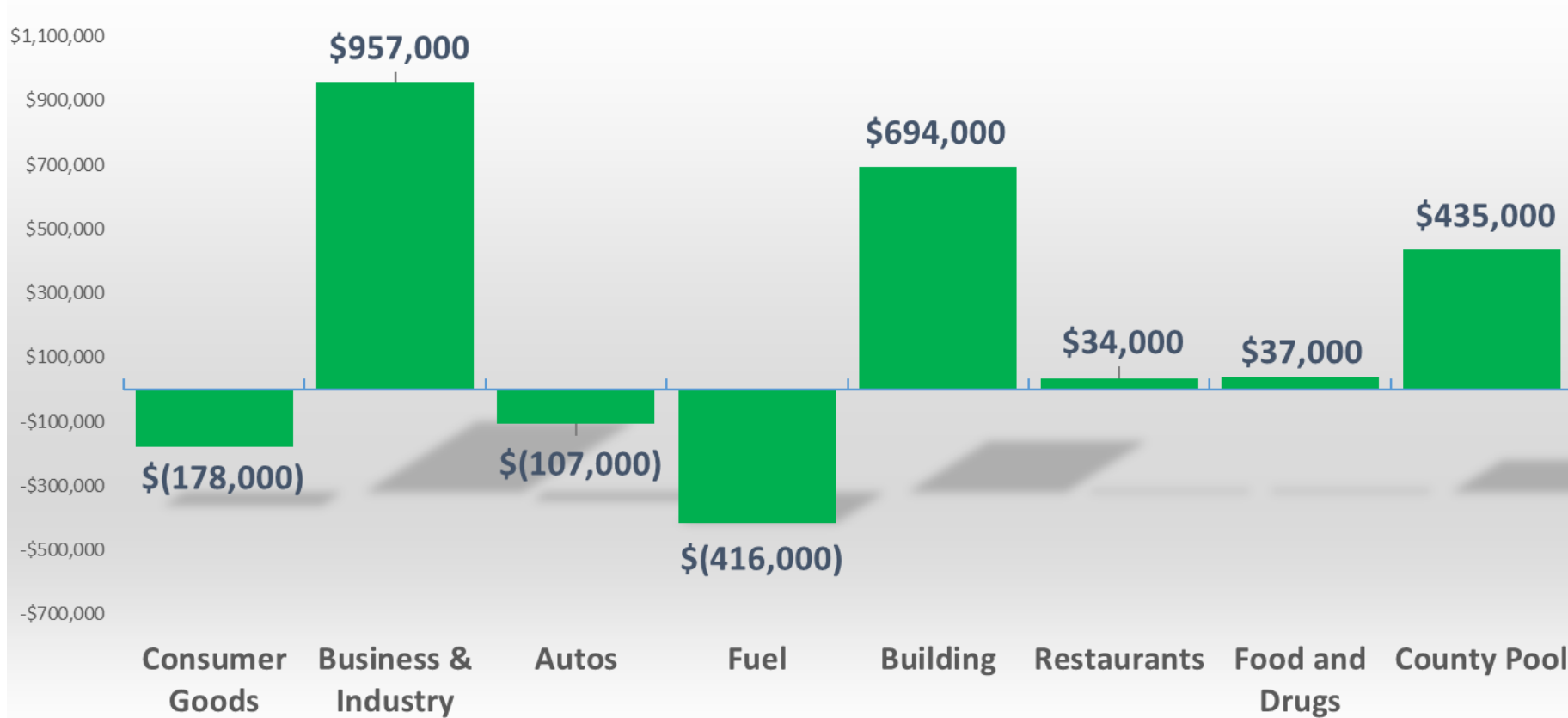
*\*Adjusted indicates that where there are aberrations associated with payment timing, the payment is presented in the quarter in which the sales transaction occurred, not when the cash was received, to better reflect underlying economic activity and results.*



# Corona Major Industry Group Performance

## 2Q23 Change in Adjusted Sales Tax by Category (vs 2Q22)

+\$1.5M / +10.3% Overall



# CORONA MAJOR INDUSTRY GROUPS (5 Largest)

## Building And Construction

Count: 252

## Business And Industry

Count: 1,566

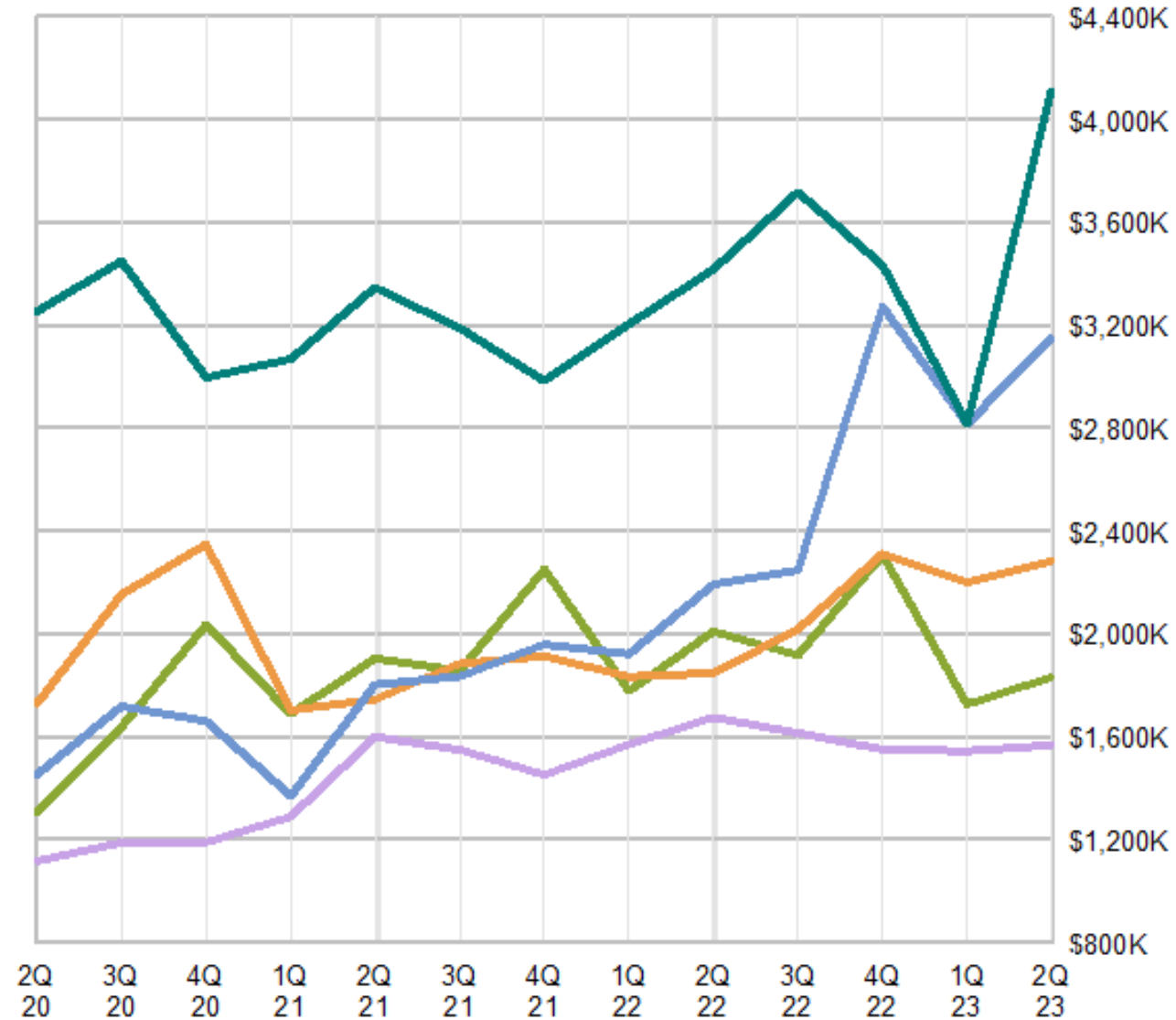
## State & County Pools

## General Consumer Goods

Count: 1,368

## Autos And Transportation

Count: 434



# CORONA MAJOR INDUSTRY GROUPS (Remaining 3)

## Fuel And Service Stations

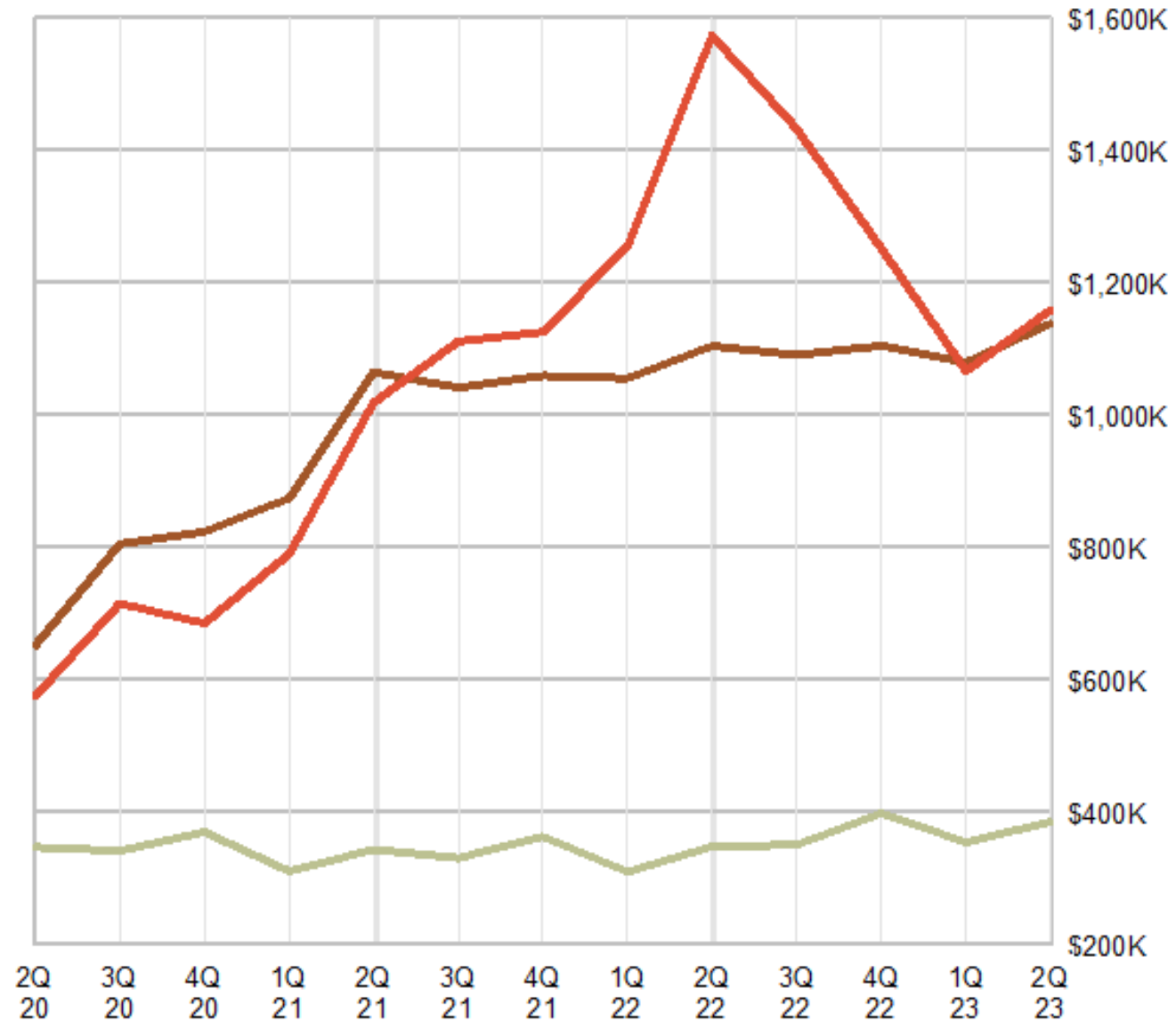
Count: 56

## Restaurants And Hotels

Count: 469

## Food And Drugs

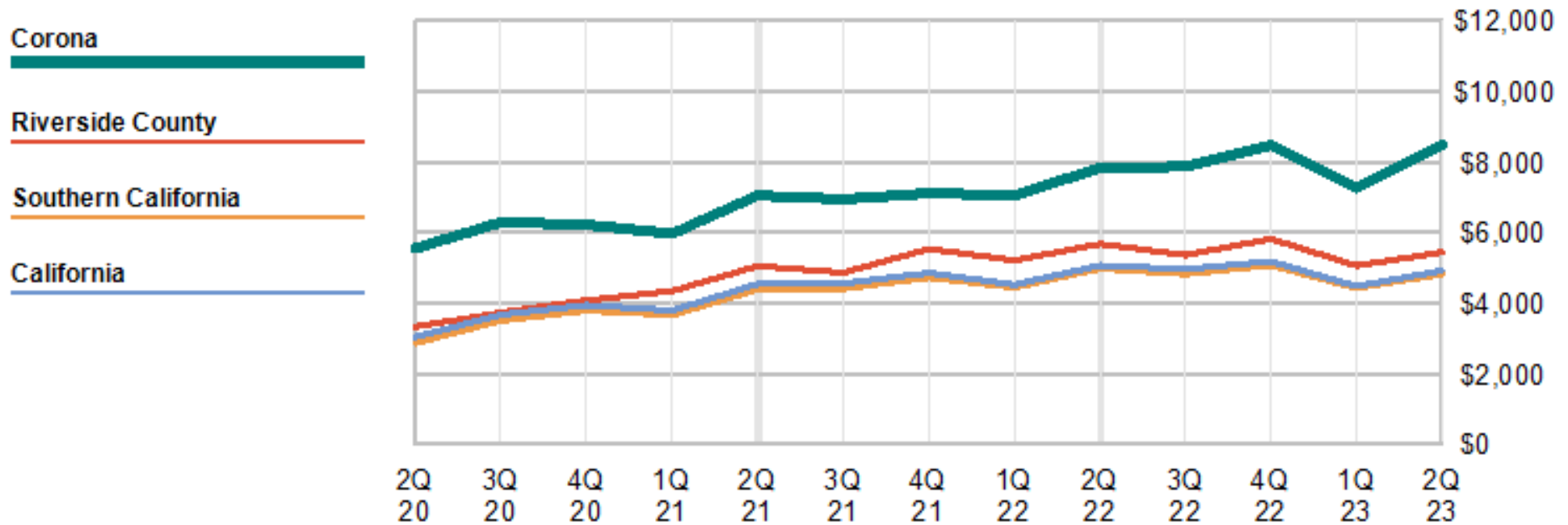
Count: 145





# Regional Comparison

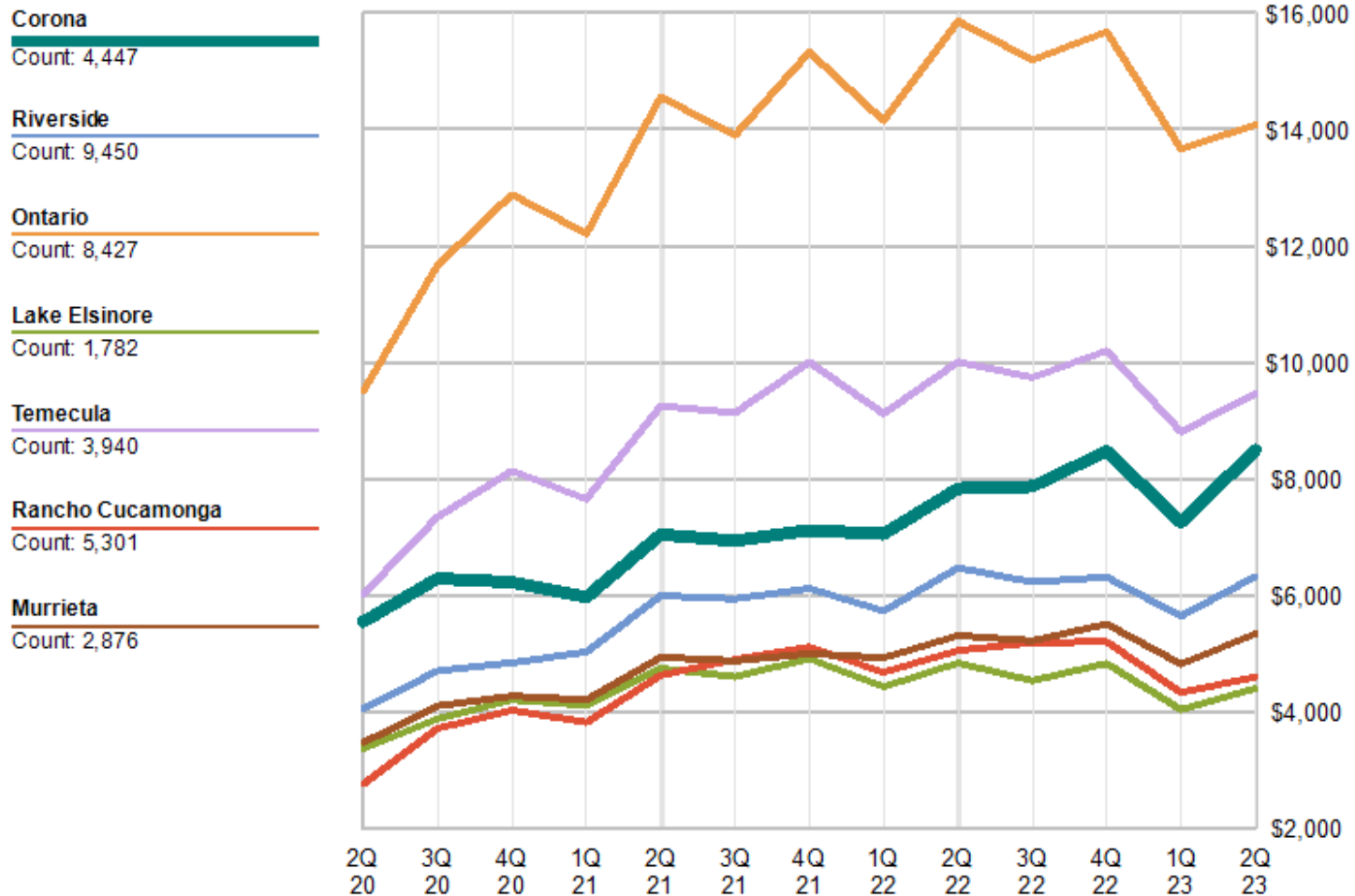
*Per Capita Adjusted Sales Tax Graph*





# City Comparison 1

## Per Capita Adjusted Sales Tax Graph

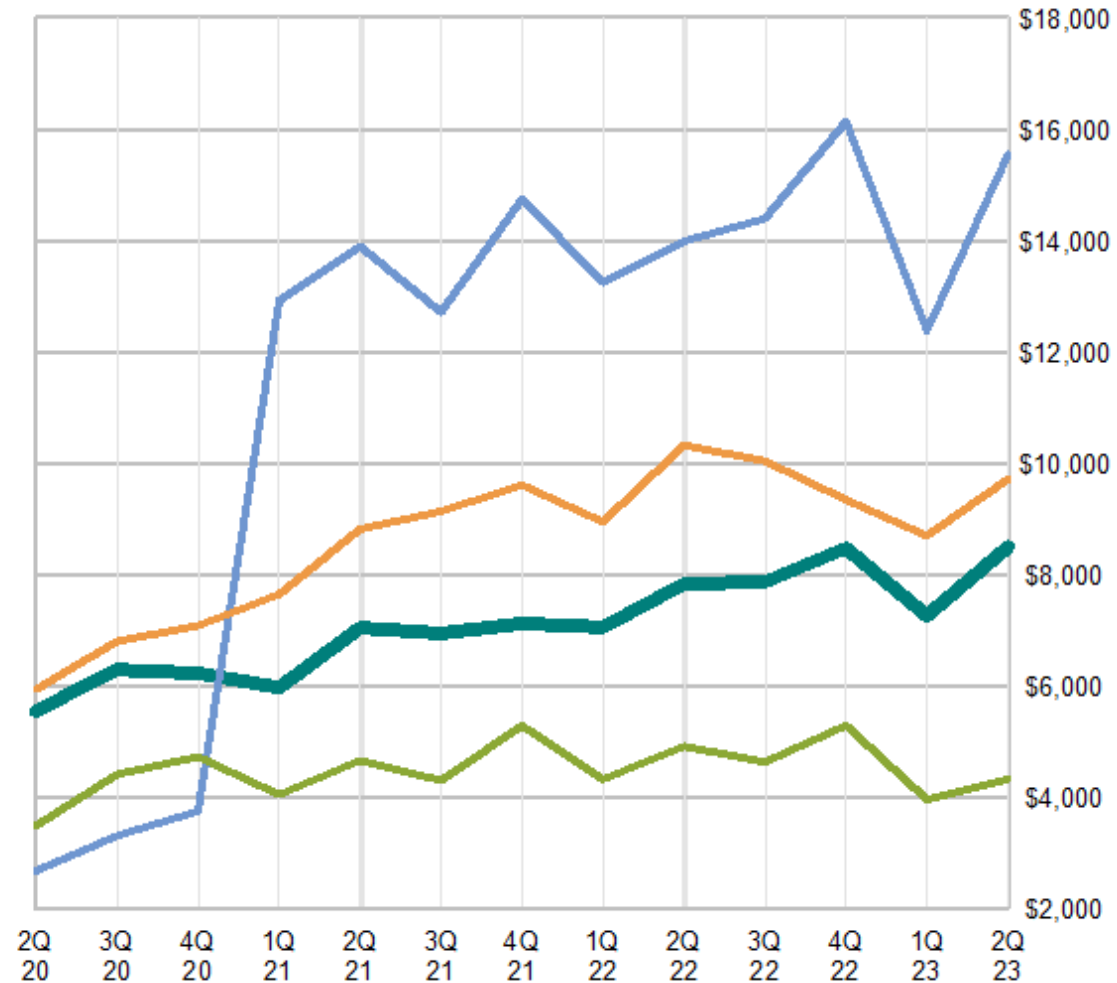




# City Comparison 2

## Per Capita Adjusted Sales Tax Graph

- Corona**  
Count: 4,447
- Eastvale**  
Count: 1,378
- Norco**  
Count: 1,244
- Jurupa Valley**  
Count: 3,685

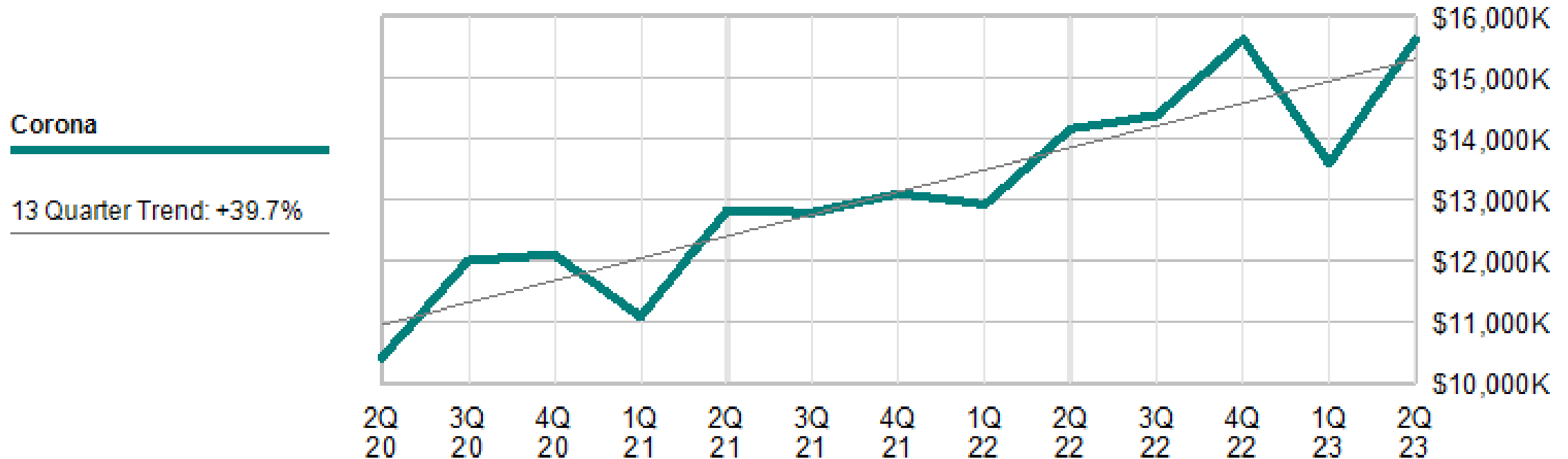






# Corona Long-Term Sales Tax Trend

Adjusted Point-of-Sale Receipts: 13-quarter trend: +39.7%





# Corona Measure X *(Adjusted results)*

Last Four-Quarters: \$44.8M  
(75.6% of Bradley-Burns Tax Receipts)

