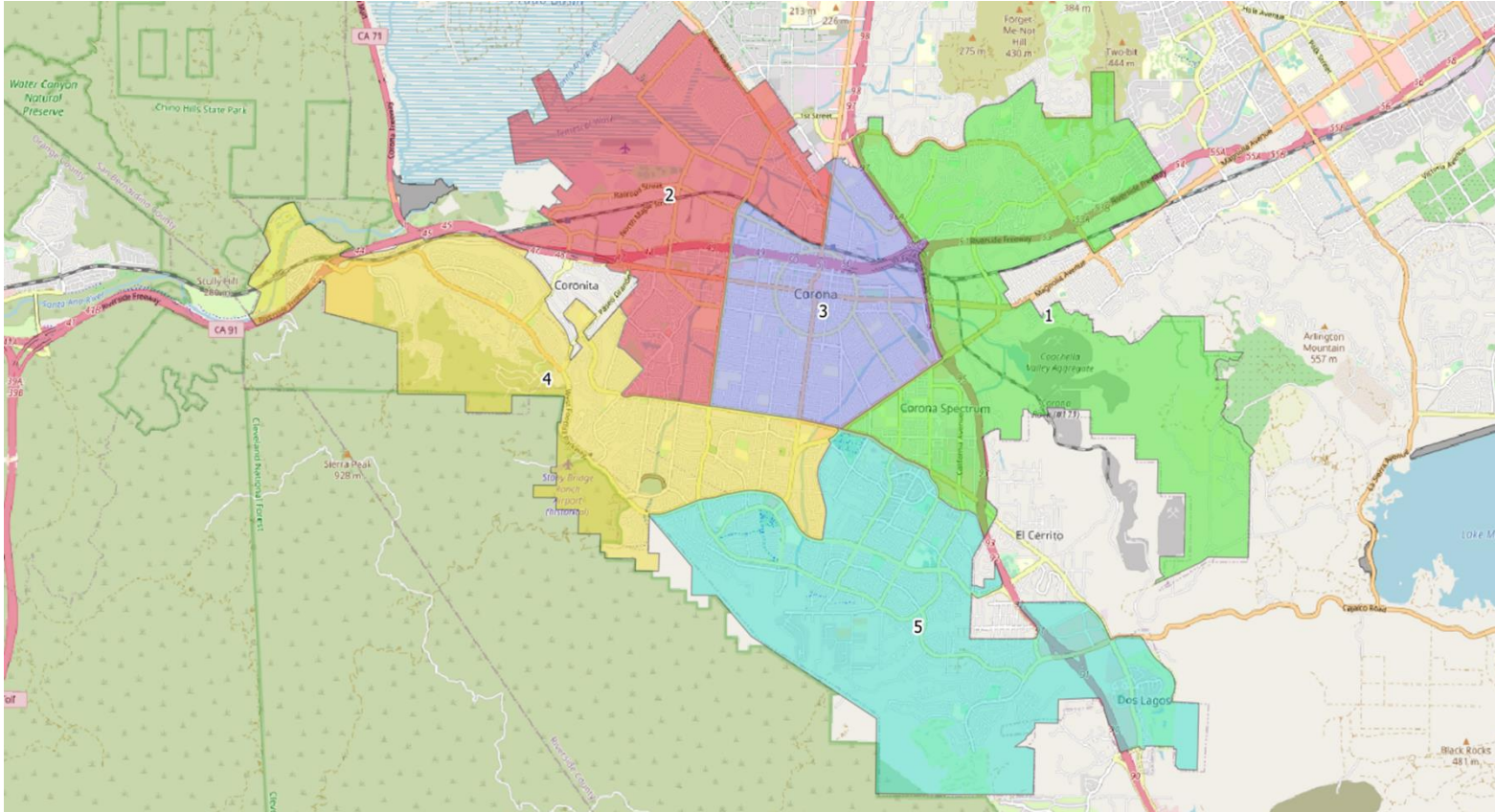


Exhibit 1

Existing Districts with Demographic Data



District	Total_Population	Raw Population	% Population	Latino	CVAP*19 Total	CVAP19 NL** White	CVAP19 NL Black	CVAP Hispanic	CVAP19 Not Hispanic	CVAP19 NL AIAN***	CVAP19 NL ASIAN	CVAP19 NL Hawaiian	CVAP19 NL Other
1	30,314	-1,222	-3.87%	12,450	21,028	8,284	1,865	7,098	13,911	83	3,114	127	73
2	32,952	1,416	4.49%	19,230	20,560	7,339	1,298	9,868	10,689	66	1,324	72	79
3	30,301	-1,235	-3.92%	21,632	18,184	6,508	476	10,424	7,780	55	691	10	26
4	30,957	-579	-1.84%	10,824	24,231	11,336	1,136	7,586	16,658	58	3,400	232	145
5	33,155	1,619	5.13%	9,263	25,283	12,629	1,755	6,081	19,170	31	4,115	91	142
Total	157,679												
Ideal	31,536	Deviation	9.05%										
*CVAP = Citizen voting age population													
**NL = Non-Latino													
***AIAN = American Indian Alaskan Native													