



City of Corona Parks and Recreation Master Plan

Parks and Recreation Commission Meeting

May 9, 2023





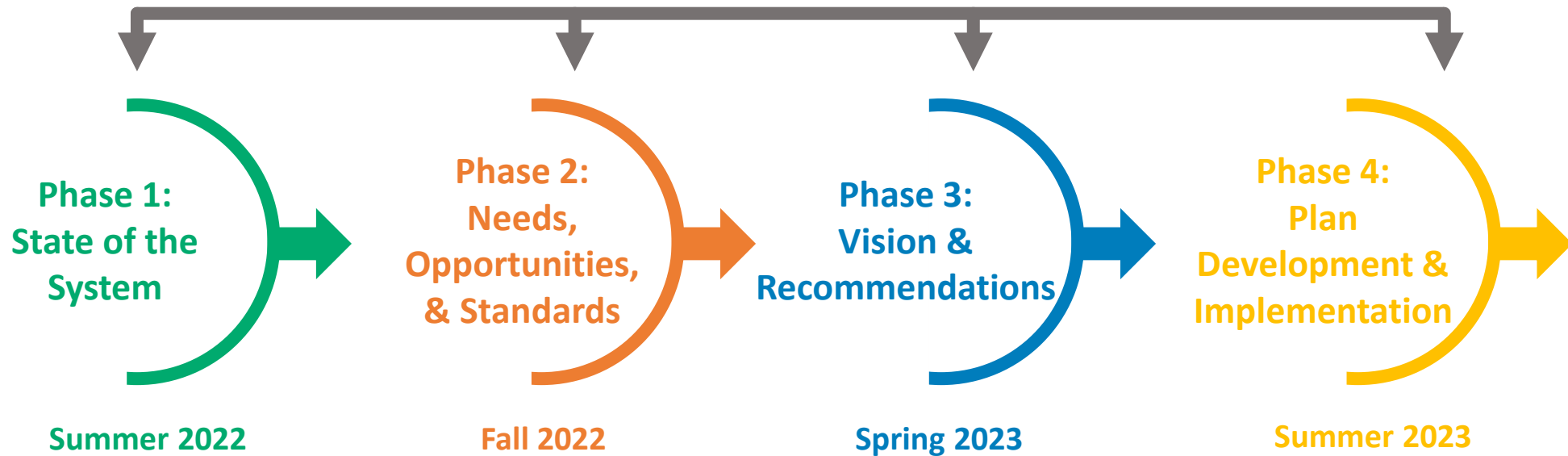
The Ask:

Master Plan Process Update
Needs Assessment Overview
Master Plan Vision Framework
Next Steps
Discussion

Community-Driven Process

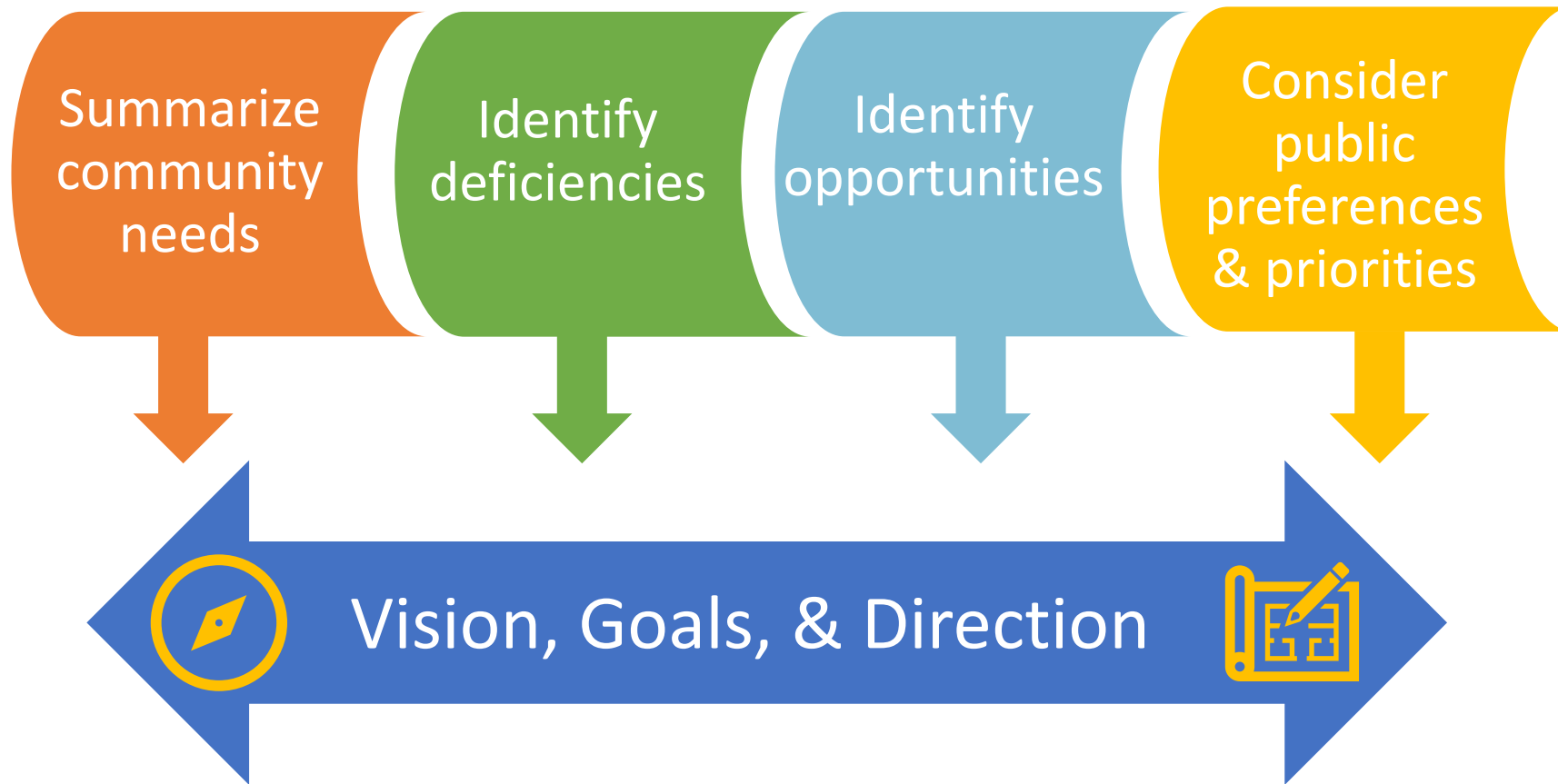


Public Engagement and Outreach



Needs Assessment Purpose

To guide the development of the Parks and Recreation Master Plan, including the vision, goals, and recommendations.



Needs Survey



1,347
Respondents

- English & Spanish
- Online
- QR codes at parks
- Social Media
- City channel
- Local advocates/leaders
- Hard copy at City events



City of Corona Parks and Recreation Master Plan FEEDBACK & NEEDS SURVEY

The City of Corona is collecting community input to guide improvements to its parks, recreation facilities, trails, and programs. Please share your thoughts with us!

PARK-SPECIFIC

1. What Park do you visit most frequently in Corona?

Thinking about the entire park and recreation system in our community, how satisfied are you with the mix and availability of the following questions about needs:



PLAN MAESTRO DE PARQUES Y RECREACIÓN DE LA CIUDAD DE CORONA

Encuesta de necesidades de recreación

La ciudad de Corona está recopilando información de la comunidad para guiar las mejoras a sus parques, instalaciones recreativas, senderos y programas. ¡Comparta sus opiniones con nosotros!

ESPECÍFICO A UN PARQUE

1. ¿Qué parque en Corona visitas con más frecuencia? (Escribe uno)

2. ¿Con qué frecuencia visita este parque?

- Diario o casi diario
- Aproximadamente una vez por semana
- Algunas veces al mes
- Cada dos o tres meses
- Algunas veces al año

3. ¿Cómo calificas este parque?

Malo Aceptable Promedio Bueno Excelente

4. ¿Qué le gustaría ver mejorado en este parque?

Marque todas las opciones que correspondan.

- Mayor variedad de cosas para hacer
- Amenidades más nuevas o instalaciones en mejores condiciones
- Más programas, actividades y clases
- Horas extendidas
- Que se agreguen baños y bebederos
- Más estructuras de juegos para niños
- Más instalaciones para apoyar el fitness
- Más espacios verdes, árboles, áreas naturales y senderos
- Mejorar el acceso para ciclistas y peatones
- Arte o elementos interpretativos
- Más grilla
- Ingrese un comentario.
- Algo que no está en esta lista (ingrese a continuación)

NECESIDADES

Pense en todo el sistema de parques y recreación en Corona, responda las siguientes preguntas sobre las necesidades de nuestra comunidad. (¿Qué tan satisfecho/a está con la mezcla y disponibilidad de lo siguiente en Corona?)

5. Parques

Muy insatisfecho/a Muy satisfecho/a

6. Eventos especiales (Películas en el parque, festival del 4 de julio, etc.)

Muy insatisfecho/a Muy satisfecho/a

7. Programas de recreación organizados, actividades, ligas, componentes y clases.

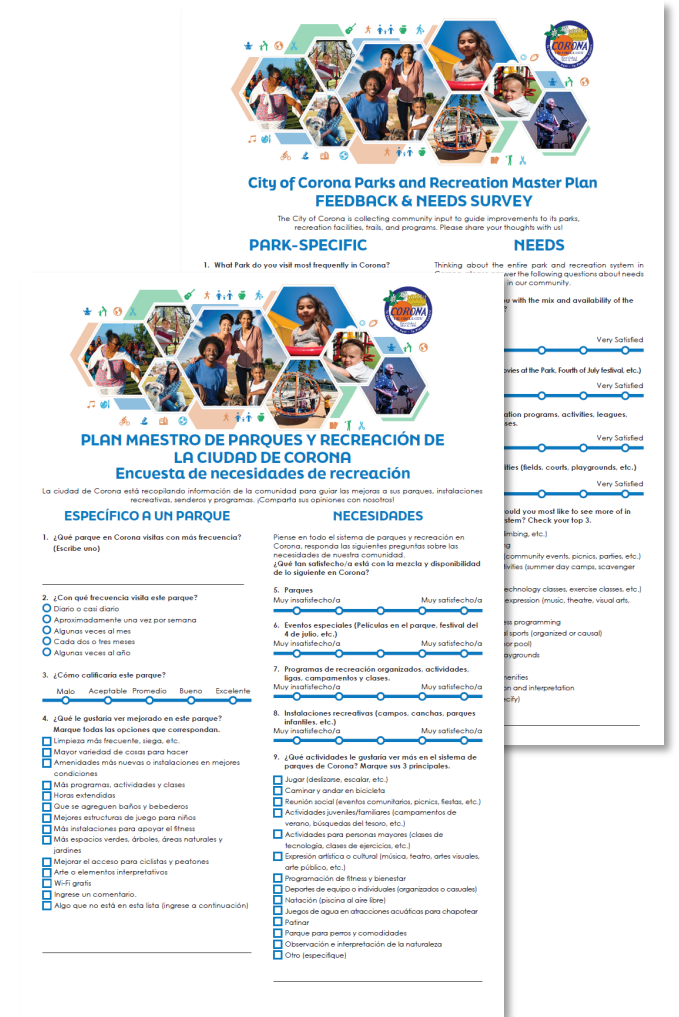
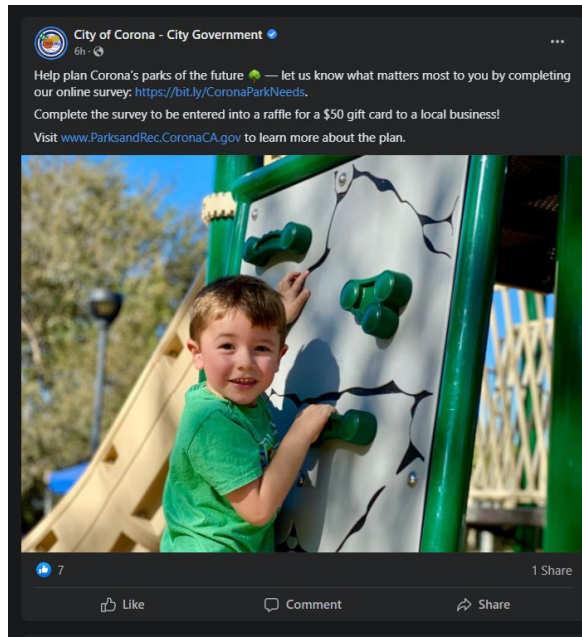
Muy insatisfecho/a Muy satisfecho/a

8. Instalaciones recreativas (campos, canchas, parques infantiles, etc.)

Muy insatisfecho/a Muy satisfecho/a

9. ¿Qué actividades le gustaría ver más en el sistema de parques de Corona? Marque sus 3 principales.

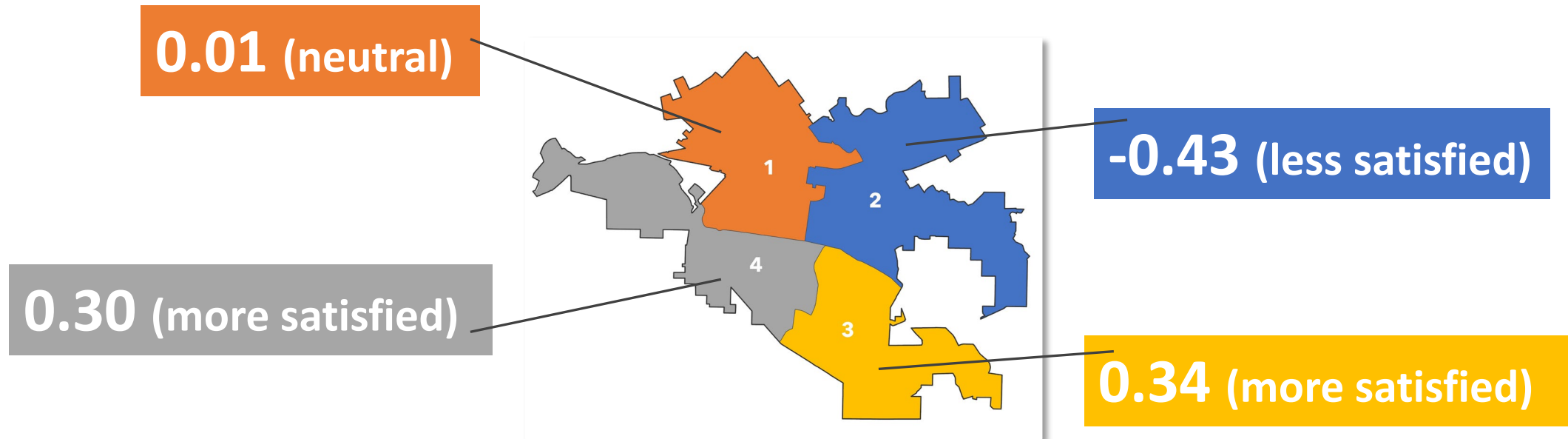
- Jugar (deporte, escolar, etc.)
- Caminar y andar en bicicleta
- Reunión social (eventos comunitarios, picnics, fiestas, etc.)
- Actividades juveniles/familiares (campamentos de verano, cumpleaños del tesoro, etc.)
- Actividades para personas mayores (clases de tecnología, clases de ejercicios, etc.)
- Expresión artística o cultural (música, teatro, artes visuales, arte público, etc.)
- Programación de fitness y bienestar
- Deportes de equipo o individuales (organizados o casuales)
- Navegación (piscina al aire libre)
- Juegos de agua en atracciones acuáticas para chapotear
- Patinar
- Parque para perros y mascotas
- Observación e interpretación de la naturaleza
- Otro (especifique)



Satisfaction with Parks

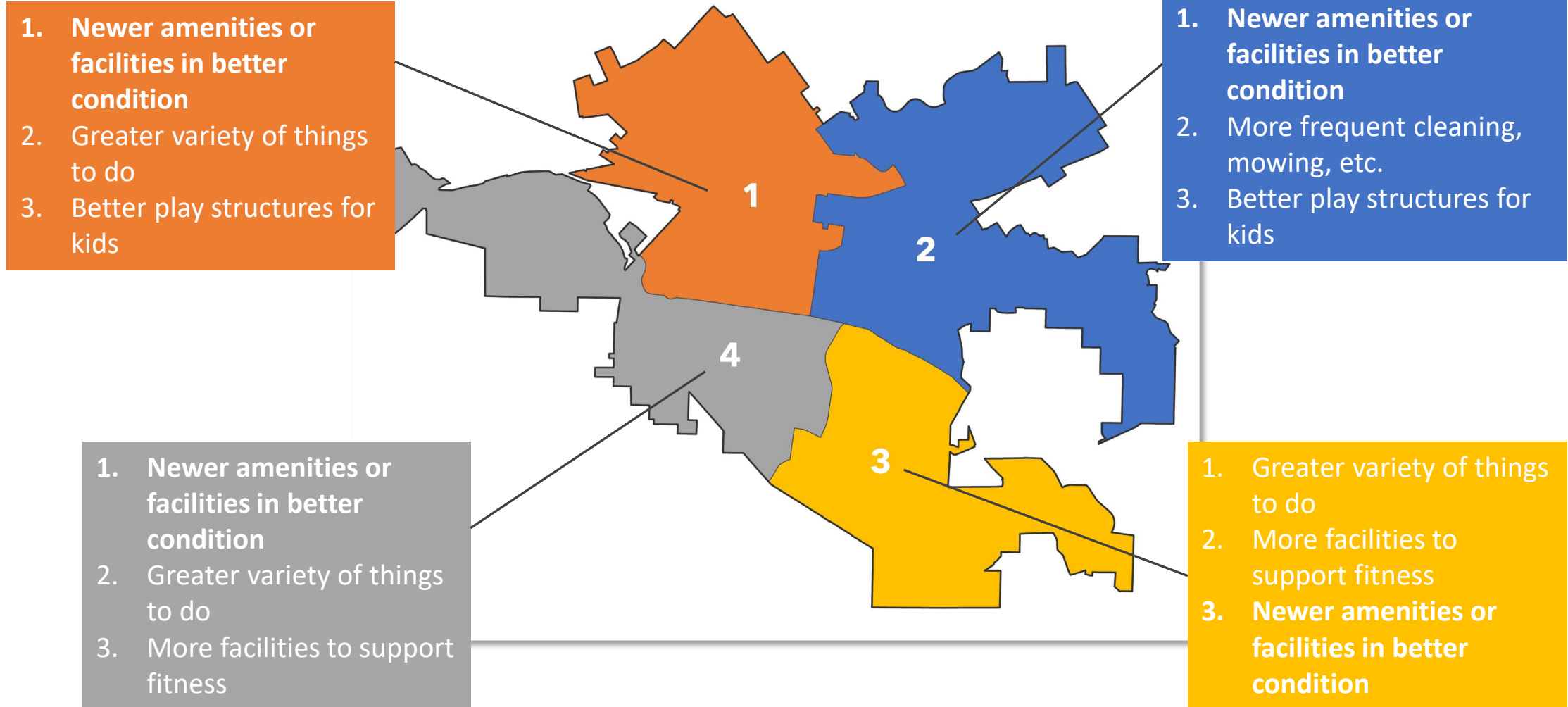
60% are satisfied or very satisfied with Corona's parks

Park Satisfaction Levels by Quadrant
(Scale -1 to 1)



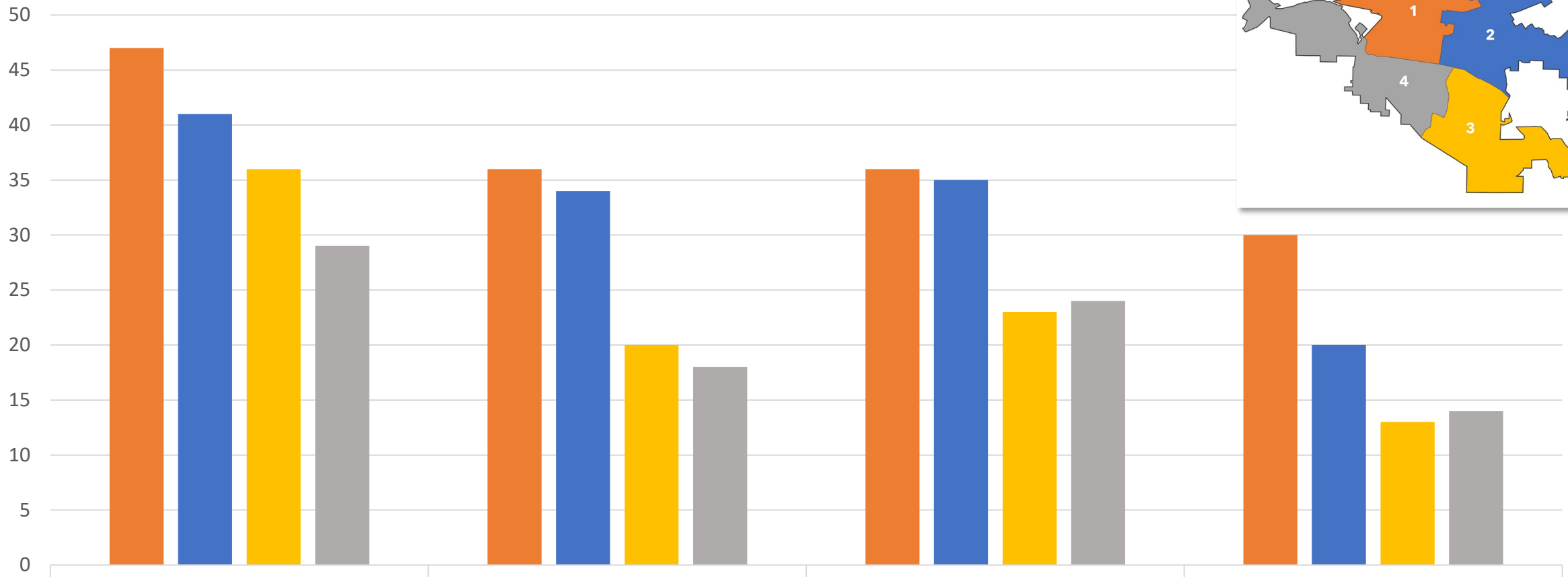
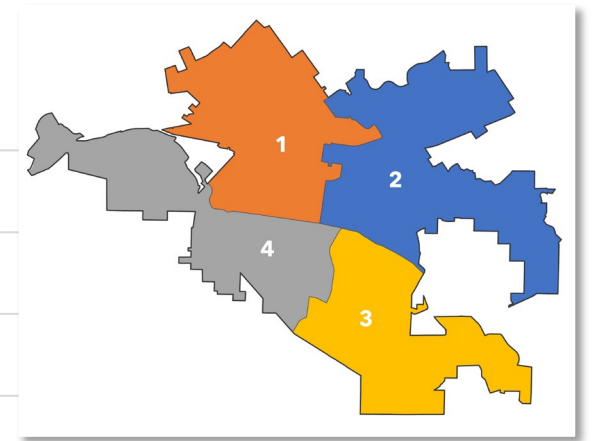
What Improvements are Needed?

(Top 3 Needs by Quadrant)



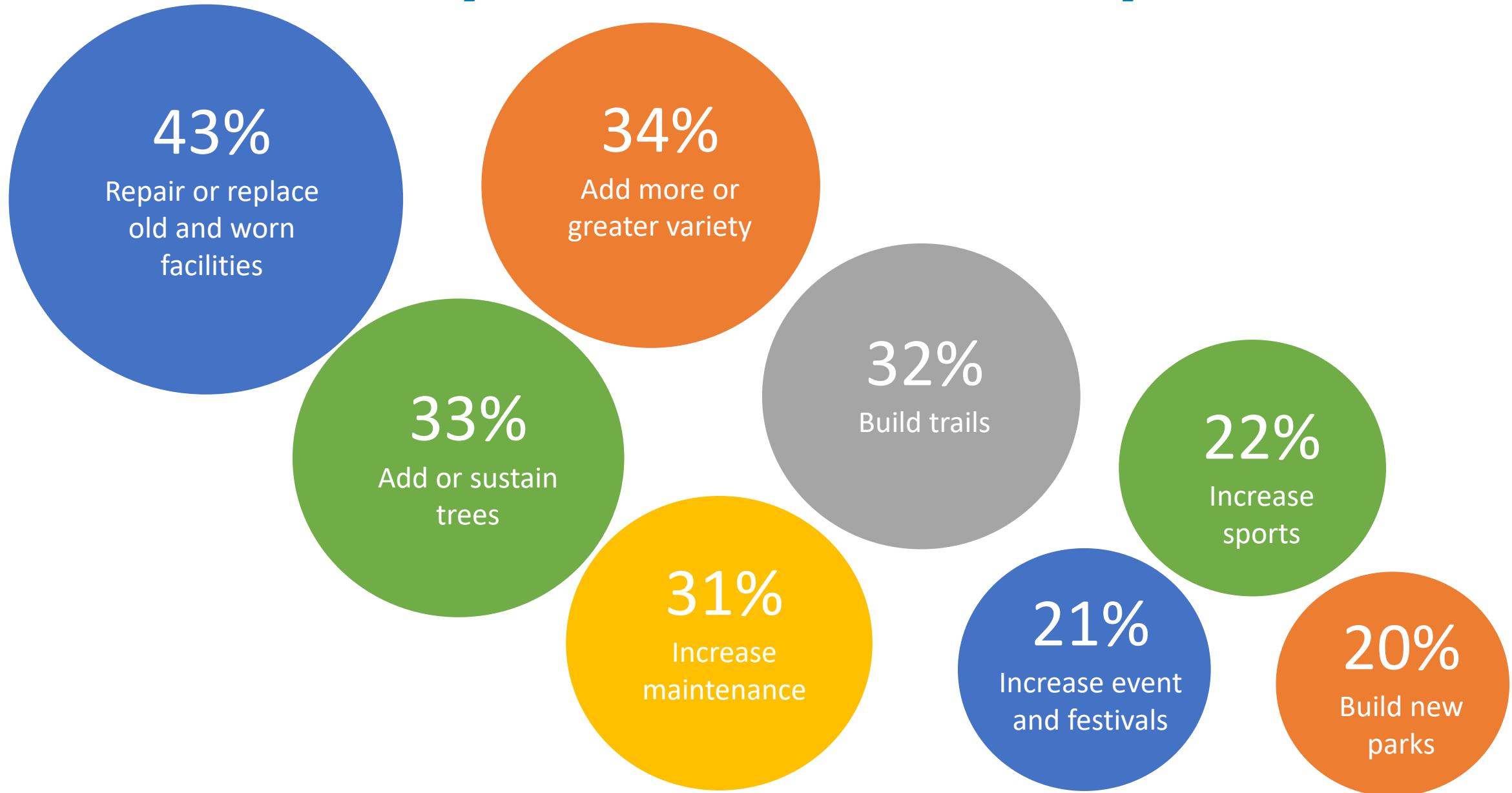
What Improvements are Needed?

(In Parks by Quadrant)

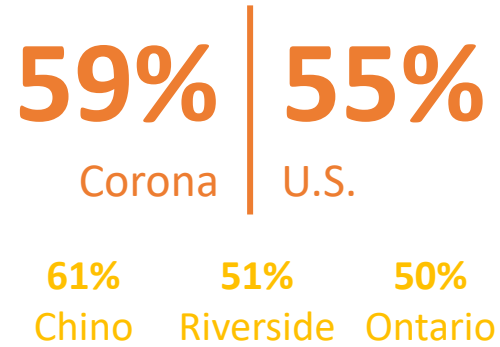


Quadrant 1 2 3 4

If the City Had More Money . . .



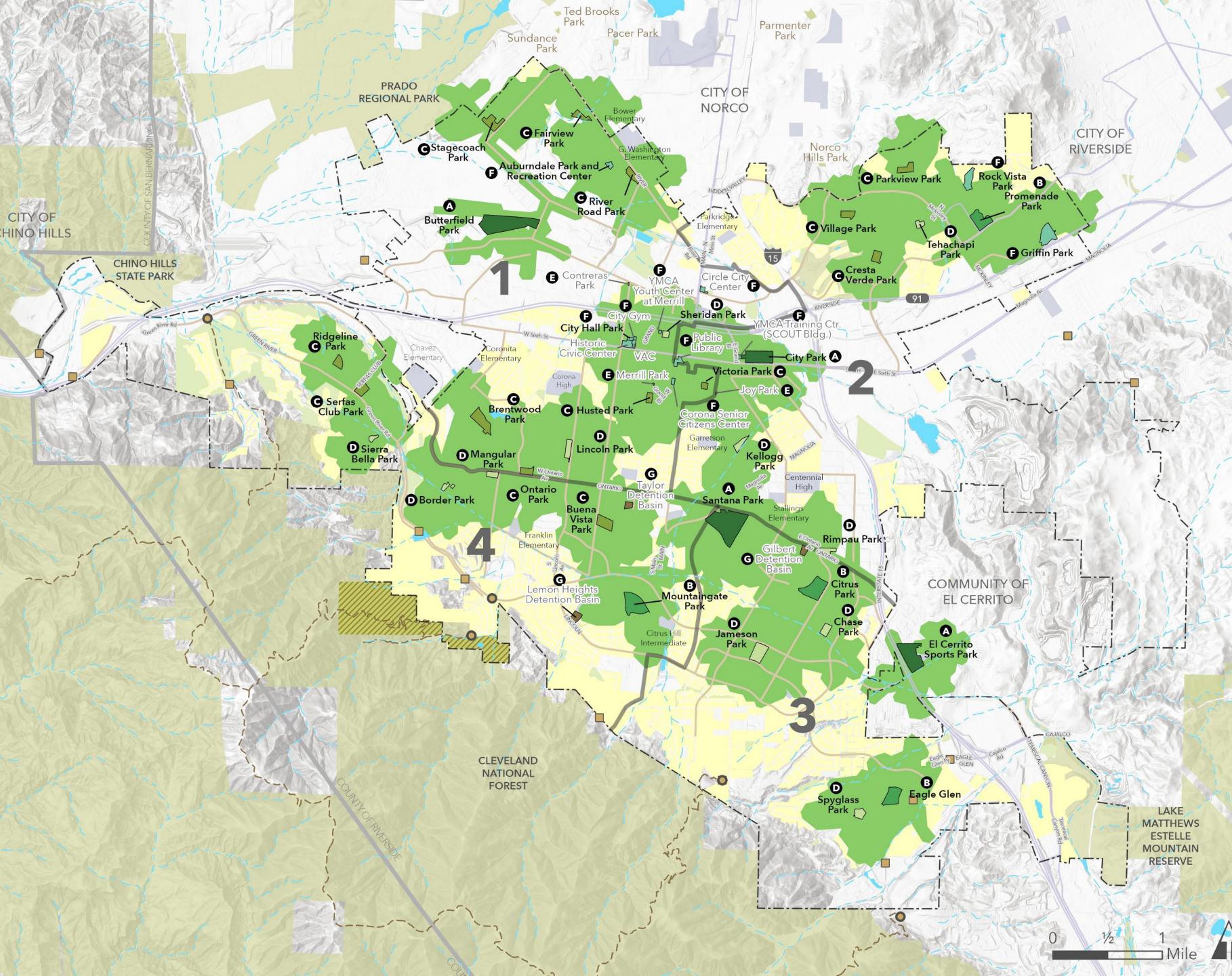
What is Park Access?



Residents that live within a 10-minute walk of a park.



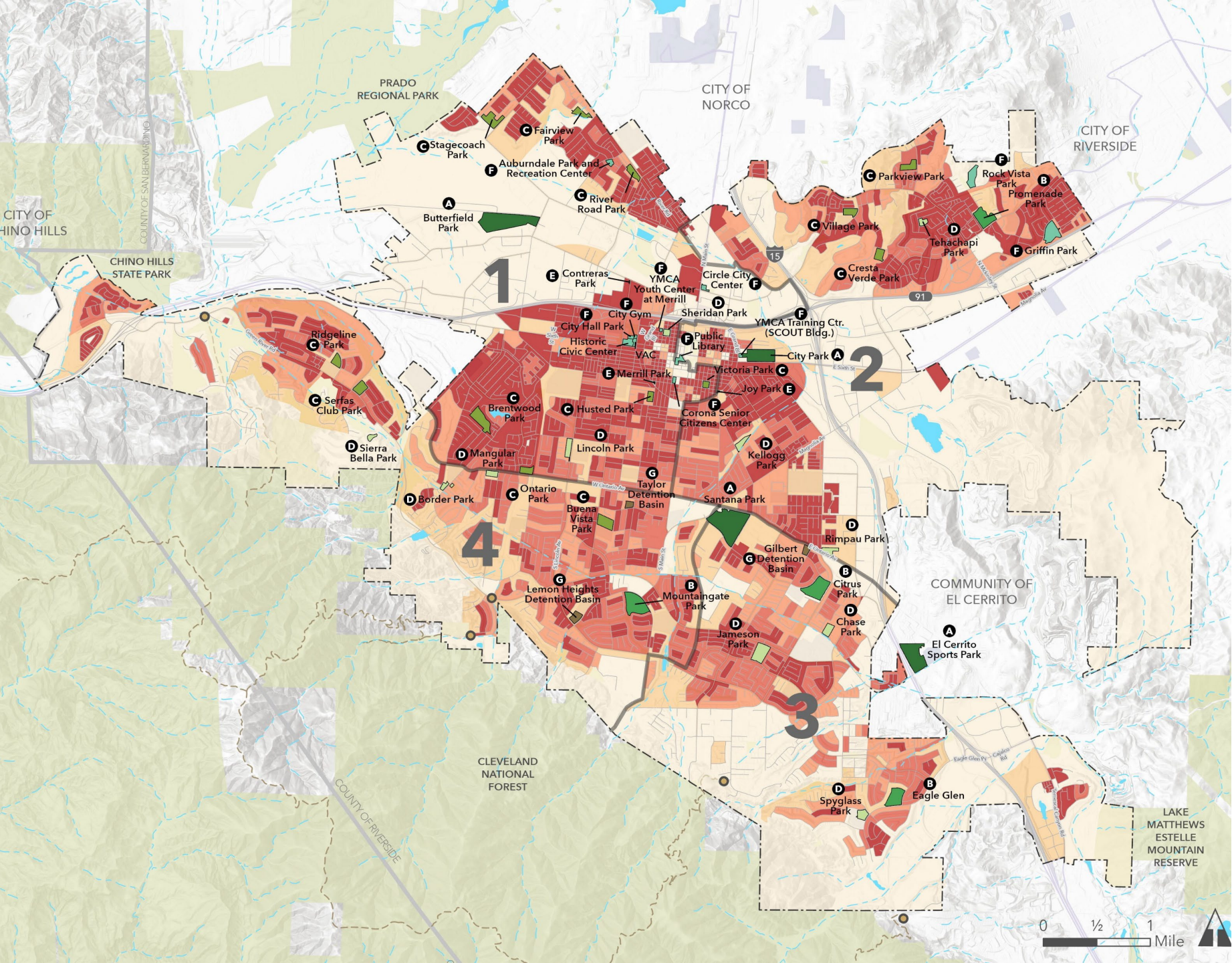
Parks Access Analysis



City of Corona Parks

- A** Citywide Park
- B** Community Park
- C** Neighborhood Park - Multi-Use
- D** Neighborhood Park - Basic
- E** Pocket Park
- F** Special Use Site
- G** Undeveloped Parkland
- Potential Parkland Acquisition
- 10-minute Walk to City Parks
- Residential Areas

Population Density



Population Density
(Persons per Square Mile)

- 0 - 2,000
- 2,001 - 4,000
- 4,001 - 6,000
- 6,001 - 8,000
- 8,001 and Greater

The City of Corona has an overall population density of 3,926 persons per square mile.

City of Corona Parks

- A** Citywide Park
- B** Community Park
- C** Neighborhood Park - Multi-Use
- D** Neighborhood Park - Basic
- E** Pocket Park
- F** Special Use Site
- G** Undeveloped Parkland



Healthy Places Index

HEALTHY PLACES INDEX INDICATORS	ECONOMIC	Income exceeding 200% of federal poverty level
		Employed (ages 25-64)
		Per capita income
	EDUCATION	Bachelor's education or higher (ages 25+)
		Enrolled in school (ages 15-17)
		Enrolled in pre-school (ages 3-4)
	SOCIAL	Registered voters
		Respondents to the 2020 census
	TRANSPORTATION	Access to an automobile
		Commuting by walking, cycling, or transit (ages 16+)
	HEALTHCARE ACCESS	Insured adults (ages 18-64)
		Living within ½ -mile of a park, beach, or open space greater than 1 acre
		Census tract with tree canopy
Employment density (retail, entertainment, supermarkets, and educational uses)		

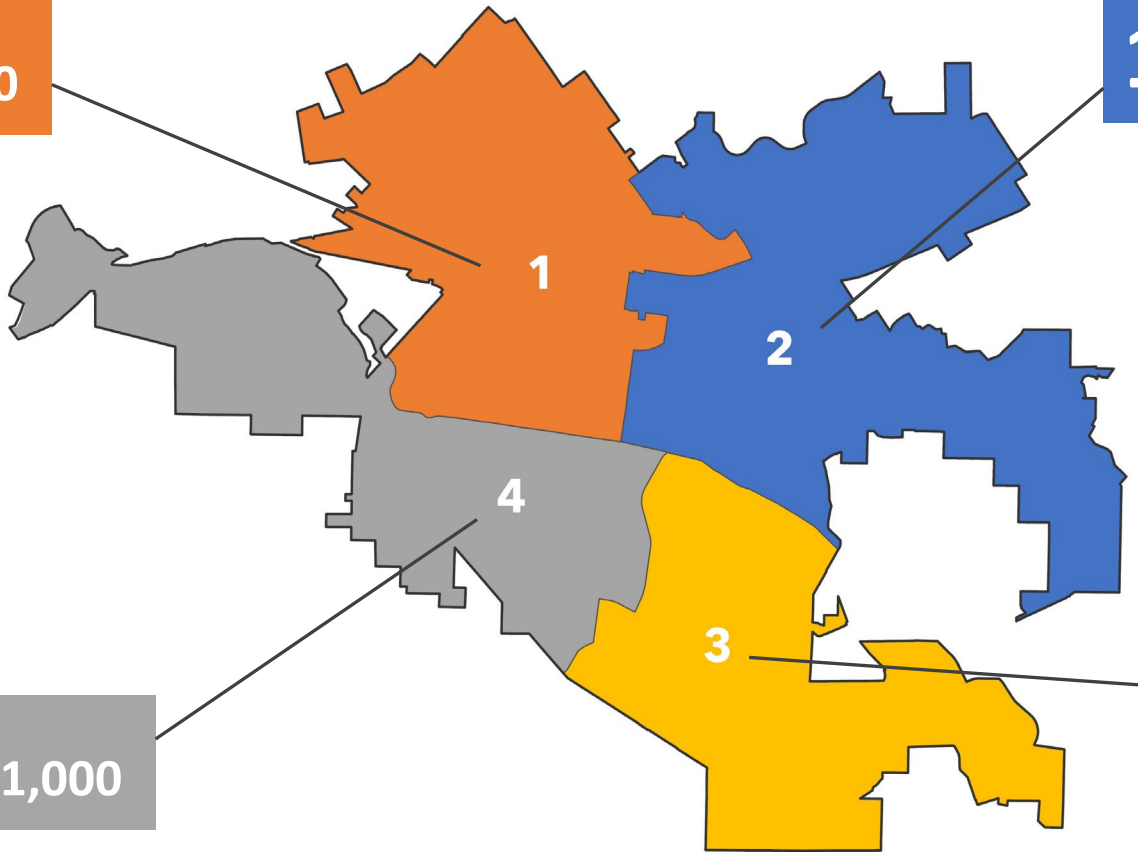
- The CA Health Places Index (HPI 3.0) **2022 Update**
 - Summarizes the health of community conditions (per census tracts)
 - 23 indicators of social determinants of health

HOUSING	Owner-occupied housing units
	Households with complete kitchen facilities and plumbing
	Severe cost burden (owner households)
	Severe rent burden (renter households)
	Households with less or equal to 1 occupant per room
CLEAN ENVIRONMENT	PM emissions
	Drinking water contaminants
	Ozone concentration
	PM2.5 concentration

What's Our Level of Service?

2.2 acres per 1,000

1.9 acres per 1,000



1.7 acres per 1,000

5.1 acres per 1,000

City Standard: 3 acres/1,000

City Total: 2.5 acres/1,000

City Total + Recently Acquired Land: 305 acres/1,000

Recreation Facilities LOS

Level of Service (LOS) = Total Population per number of facilities

Calculation Example:

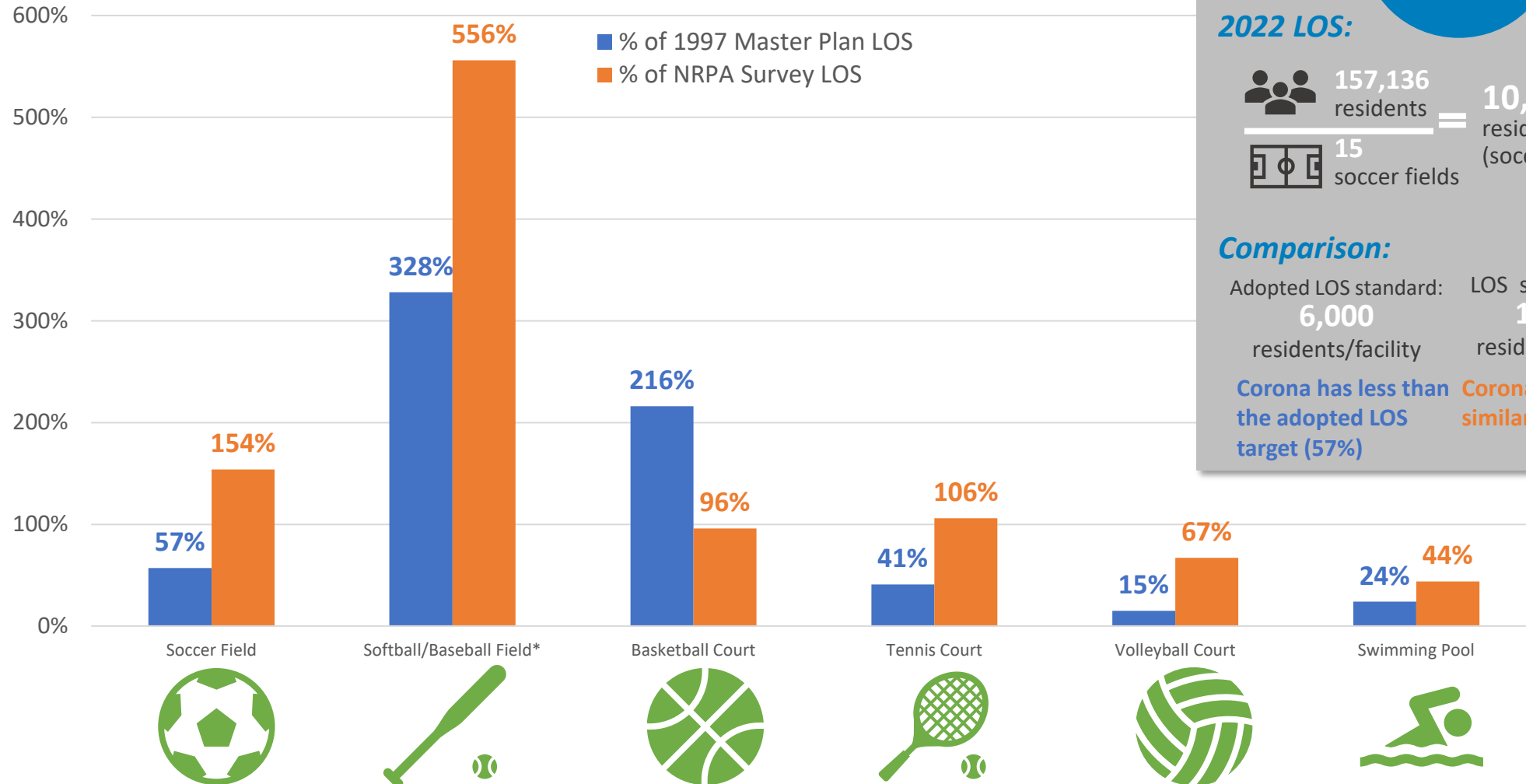
2022 LOS:

$$\begin{array}{r}
 \text{157,136} \\
 \text{residents} \\
 \hline
 \text{15} \\
 \text{soccer fields} \\
 \hline
 \text{10,476} \\
 \text{residents/facility} \\
 \text{(soccer field)}
 \end{array}$$

Comparison:

Adopted LOS standard:	LOS similar cities:
6,000	16,145
residents/facility	residents/facility

Corona has less than the adopted LOS target (57%) Corona has more than similar cities (154%)



Key Themes



What is the Corona Standard?



Values + Outcomes

Foster Community Collaboration

Meaningful community participation and collaboration, through engagement, volunteering, and partnerships.

Promote Recreation for All

Full and equitable access to high-quality parks and recreation resources regardless of location or quadrant.

Enhance Maintenance and Stewardship

Sustainable operations, maintenance, and management.

Support Health and Wellness

A parks and recreation system that fosters community health and wellness and active lifestyles.

Create Resilient Parks

Parks that incorporate green infrastructure, nature, flexible spaces, and a healthy tree canopy.

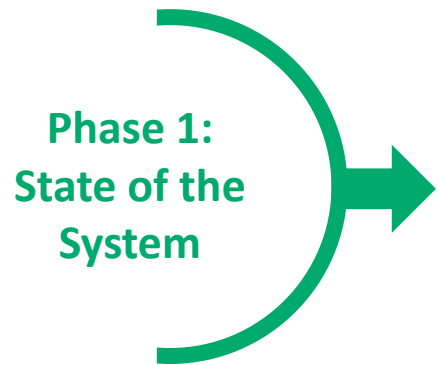
Reflect Culture, History, Heritage

Parks and recreation facilities that create a sense of identity that is reflective of the City's culture, history, heritage, and natural environment.

Ensure Financial Sustainability

Wise allocation of funds to support the common good, economic vitality, and park investment.

Next Steps



Phase 1:
State of the
System

Summer 2022

- Project Kickoff Videoconference
- Background Review
- Key Leaders Interviews
- Park Tour and Site Visits
- GIS Base Map and Inventory
- Cost Recovery Education & Training
- Public Engagement Plan
- Project Branding and Identity
- State of the System Summary
- Commission Meeting #1
- City Council Check In #1



Phase 2:
Needs,
Opportunities,
& Standards

Fall 2022

- Cost Recovery Service Category Development
- Bilingual Park and Recreation Questionnaire
- Pop-Up or Virtual Outreach Activity
- Cost Recovery Beneficiary of Service Meetings
- Cost of Service Analysis
- Park Access, Gaps, and Opportunities Analysis
- Recreation Facilities, Programs, and LOS Analysis
- Cost Recovery Strategy Alternatives
- Needs Assessment Summary
- Commission Meeting #2
- City Council Check In #2



Phase 3:
Vision &
Recommendations

Spring 2023

- Vision Framework
- Commission Meeting #3
- City Council Check In #3
- Cost Recovery Goal Setting
- Corona Standards, Guidelines, and Metrics
- Cost Recovery Metrics
- Recommendations & Master Plan Toolbox
- Recommended Fees and Charges
- CIP/Capital and Operations Cost Model
- ROI & Economic Model
- Cost Policy Alternatives



Phase 4:
Plan
Development &
Implementation

Summer 2023

- Funding and Implementation Plan
- Staff Education & Training
- The Corona Report Card
- Administrative Draft Master Plan
- Public Review Draft Master Plan
- Commission Meeting #4
- City Council Meeting #4
- Final Master Plan

= complete

= in progress

= final steps



Discussion

- The Corona Standard and Values + Outcomes:
 - Did we get it right? Did we miss anything?
- Questions?



City of Corona Parks and Recreation Master Plan

Parks and Recreation Commission Meeting
 May 9, 2023

