

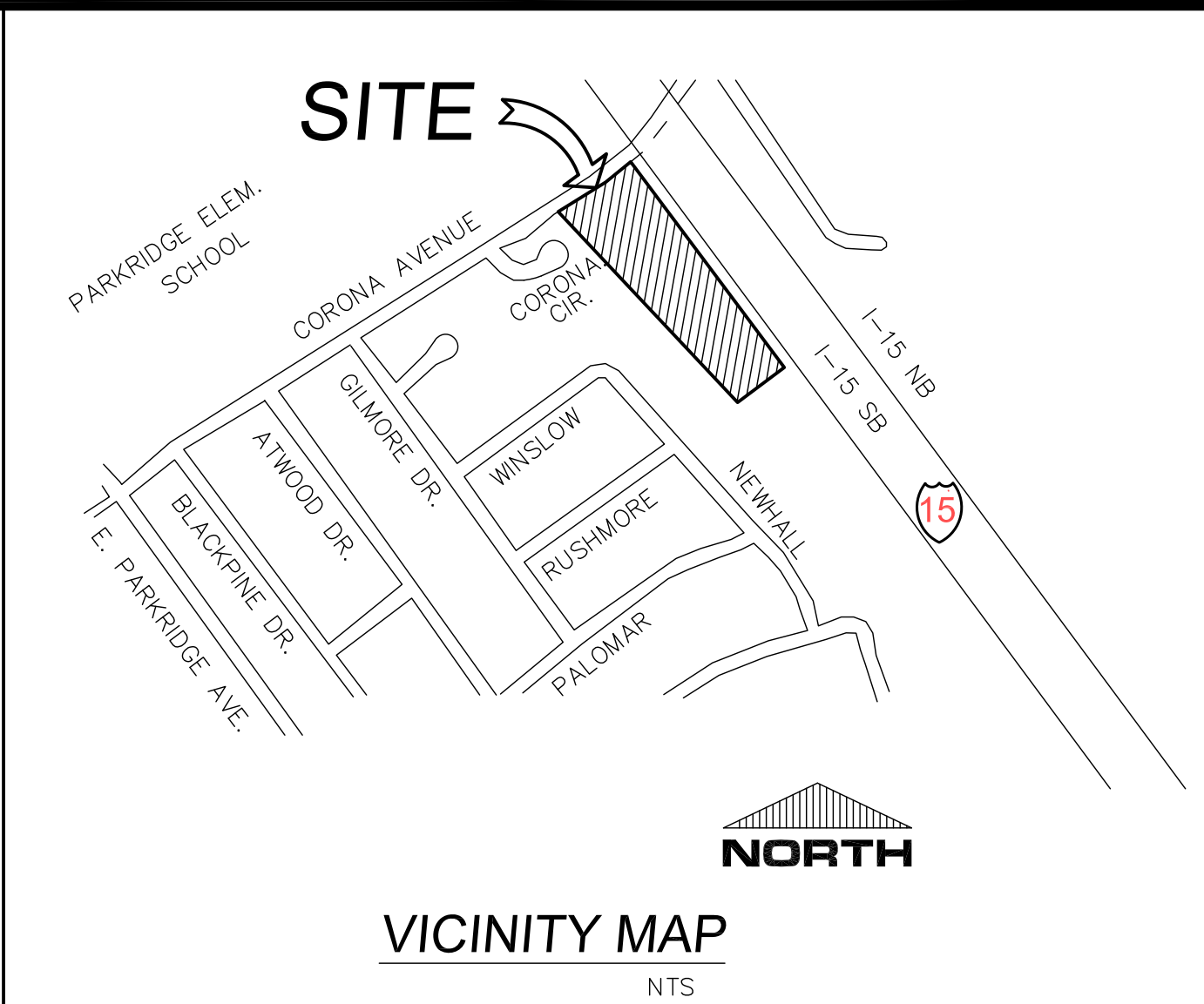
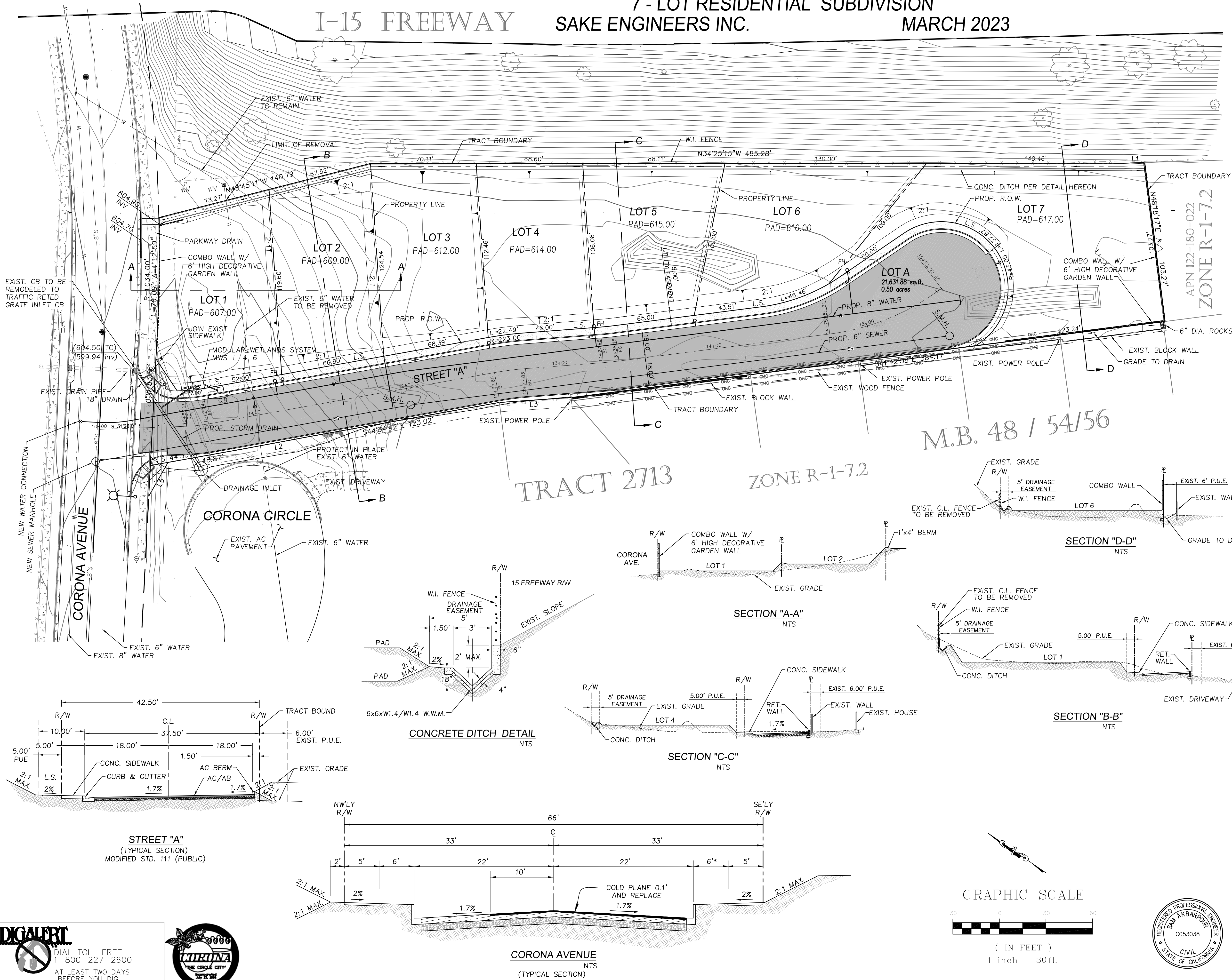
TENTATIVE TRACT 36864

APN. 122-180-027

7 - LOT RESIDENTIAL SUBDIVISION

SAKE ENGINEERS INC.

MARCH 2023



OWNER:

FATHI MANASRAH, P.E.
AL-WAFA FAMILY TRUST
9319 ALTA CRESTA AVENUE
RIVERSIDE, CA 92508
TEL. (951) 581-2330

CIVIL ENGINEER:

SAKE ENGINEERS, INC.
400 S. RAMONA AVE. STE. 202
CORONA, CA 92879
TEL. (951) 279-4041

SOIL ENGINEER:

HAYTHAM NABILSI, GE 2375
GEOMAT TESTING LABORATORIES, INC.
9980 INDIANA AVENUE, SUITE 14
RIVERSIDE, CA 92503

BENCH MARK

CITY OF CORONA BENCH MARK C-105
A 2-1/2" BRASS DISK STAMPED "C-105" SET IN THE TOP OF CURB, LOCATED 5' WEST OF THE B.C.R. OF THE SOUTHWESTERLY CURB RETURN OF THE INTERSECTION OF RIVER ROAD AND MAIN STREET.

ELEVATION = 587.437 FEET (NGVD 88)

BASIS OF BEARING

NEWHALL DRIVE N42°19'50"W (BASIS OF BEARING TRACT 2713 MB AB/54/56)

EARTHWORK QUANTITIES:

CUT = 3084 ± C.Y.
FILL = 1955 ± C.Y.
NET CUT = 1129 ± C.Y.

DISTURBED AREA:

TOTAL DISTURBED AREA: 90,853 SQFT = 2.09 ACRES

LINE	BEARING	DISTANCE
L1	N36°11'34"W	13.56'
L2	S44°57'53"E	45.10'
L3	S38°20'13"E	48.00'
L4	N26°45'45"E	28.72'
L5	N85°14'46"E	25.04'

EXHIBIT 4

TENTATIVE TRACT 36864

CONCEPTUAL GRADING PLAN CITY OF CORONA

SCALE 1" = 30'
DATE 8-24-2022
DRAWN: RL
DESIGNED: SA
CHECKED: SA
PLN. CK REF:

SAKE ENGINEERS, INC.
ENGINEERING • SURVEYING • LAND DEVELOPMENT
400 S. RAMONA AVE., STE. 202
CORONA, CALIFORNIA 92879
TEL. (951) 279-4041 FAX. (951) 279-2830

PREPARED BY: *SAKE* DATE:

J.N. 3360
SHEET
1
OF 1 SHEETS
DWG. NO.