

SCALE: 1" = 200'

SCHEDULE A - EXISTING 8-INCH STEEL WATER - INSTALL NEW 8" DUCTILE IRON PIPE INSIDE 16" STEEL CASING, AND (2) NEW 8-INCH DOUBLE BALL FLEX-TEND CONNECTORS PER DETAILS ON DRAWING C-2

SCHEDULE B - EXISTING 4-INCH SEWER FORCEMAIN - RELOCATE PER DRAWING C-3 BY INSTALLING 4-INCH HDPE PIPE INSIDE EXISTING 12-INCH PVC PIPE TO BE ABANDONED (SCHEDULE D).

SCHEDULE C - EXISTING 4-INCH WATER - TO BE ABANDONED AND CAPPED PER DRAWING C-3.

SCHEDULE D - EXISTING 12-INCH PVC RECYCLED WATER - RELOCATE BY INSTALLING 14-INCH HDPE PIPE INSIDE THE ABANDONED 24-INCH EFFLUENT (SCHEDULE E). SEE DRAWING C-4 FOR DETAILS.

SCHEDULE E - EXISTING ABANDONED 24-INCH EFFLUENT - TO BE USED AS CASING PER DRAWING C-4.

SCHEDULE F - EXISTING 24-INCH EFFLUENT - INSTALL (2) 24-INCH DOUBLE BALL FLEX-TEND CONNECTORS. SEE DRAWING C-4 FOR DETAILS.

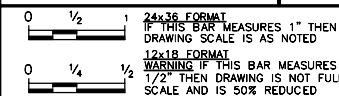
SCHEDULE G - EXISTING 42-INCH RCP TREATED SEWER - INSTALL (2) 42-INCH REDFLEX SLIP-ON SERIES SL-53 TRIPLE ARCH EXPANSION JOINTS, REPLACE 80-FEET OF RCP PIPE W/ CML&C STEEL PIPE AND CONCRETE ENCASEMENT. SEE DRAWING C-5 FOR DETAILS.

SCHEDULE H - EXISTING 12-INCH C-900 PVC WATER - REPLACE WITH 12-INCH DUCTILE IRON PIPE, 20" CASING, AND (2) NEW DOUBLE BALL FLEX-TEND CONNECTORS PER DRAWING C-6.

SCHEDULE I - EXISTING 18-INCH VCP SEWER - REPLACE WITH CONTINUOUSLY WELDED 18-INCH HDPE BETWEEN MANHOLES PER PLAN AND PROFILE ON DRAWING C-7.

SCHEDULE J - EXISTING 12-INCH STEEL WATER - RELOCATE TO AUBURNDALE STREET PER DRAWINGS C-8 THROUGH C-12. ABANDON EXISTING PIPELINE, REMOVE EXISTING VALVES AT BOTH ENDS WHERE INDICATED AND INSTALL BLIND FLANGES.

TWO WORKING DAYS BEFORE YOU DIG



Designed by SAFA KAMANGAR	Drawn by RALPH URIBE	Checked by GARY HOBSON
PLANS PREPARED UNDER SUPERVISION OF GARY HOBSON		
Date FEBRUARY 2007	R.C.E. No. 40779	

Date FEBRUARY 2007 GARY HOBSON
R.C.E. No. 40779

Reference Plans for
these Improvements

Date	By
------	----

REVISIONS

	App



AKM CONSULTING ENGINEERS
553 WALD
IRVINE, CA. 92618
(949) 753-7333

Engineering

Approved _____

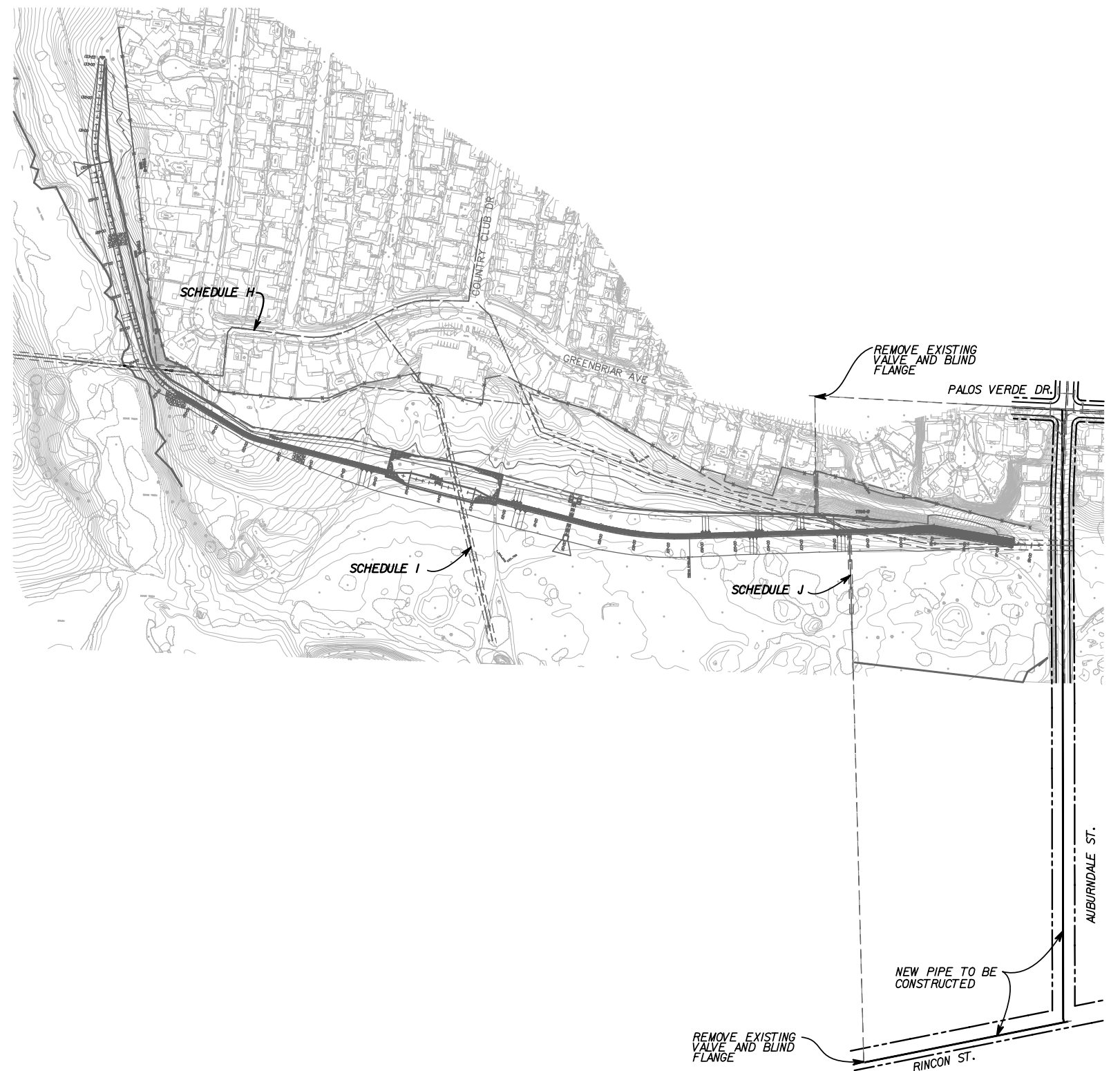
____ Approved

GENERAL MAPS

Drawing No.

C-1

ht. 3 of 14



SCALE: 1" = 200'