

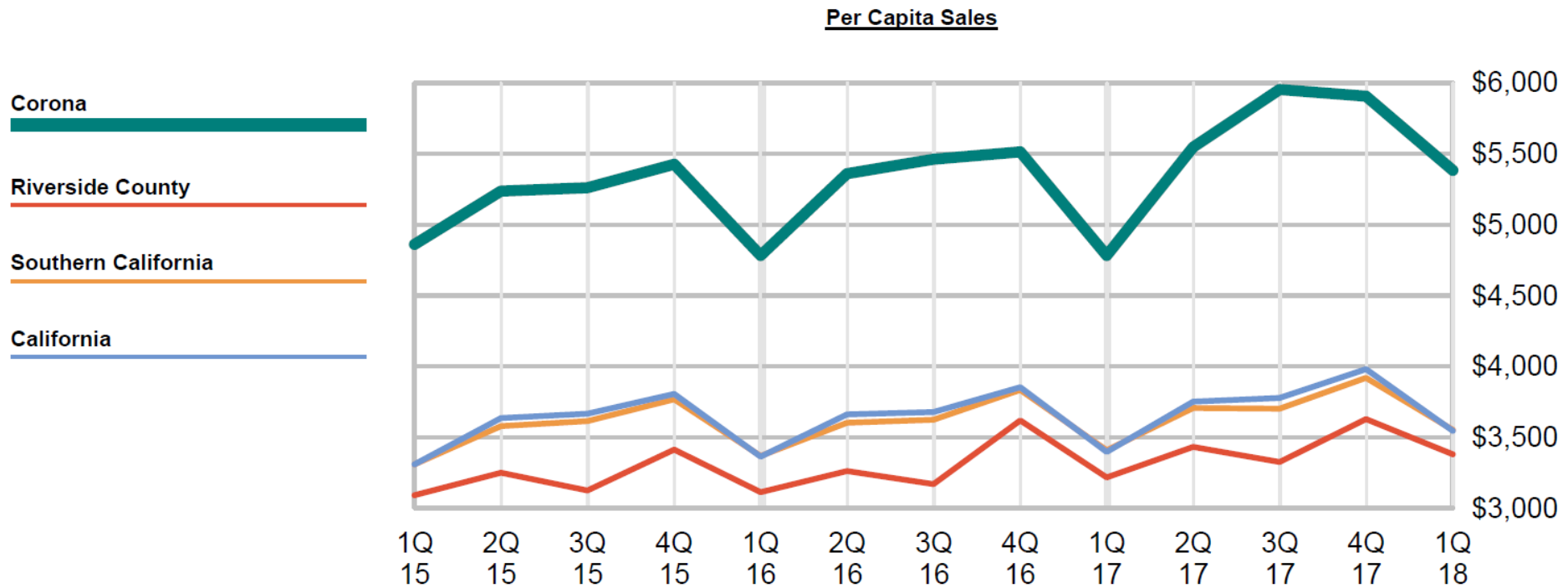
SUPREME COURT DECISION: *South Dakota vs. Wayfair*

- Out-of-state retailers must now collect sales tax
- State regulatory actions and legislative changes may be needed to implement in California
- Many internet retailers already collect tax here
- League of California Cities estimate for incremental City 1% Bradley-Burns: \$122-\$211 million/year

REGIONAL REPORT *Adjusted Sales Tax Growth*

Region	1st Quarter 2018 % Change
Corona	14.8%
Riverside County	7.9%
California	5.9%

REGIONAL REPORT *Adjusted Sales Tax Growth*



Periods shown reflect the period in which the sales occurred - Point of Sale

Per Capita Sales

Corona

Count: 4,786

Riverside

Count: 10,427

Ontario

Count: 8,482

Lake Elsinore

Count: 1,657

Temecula

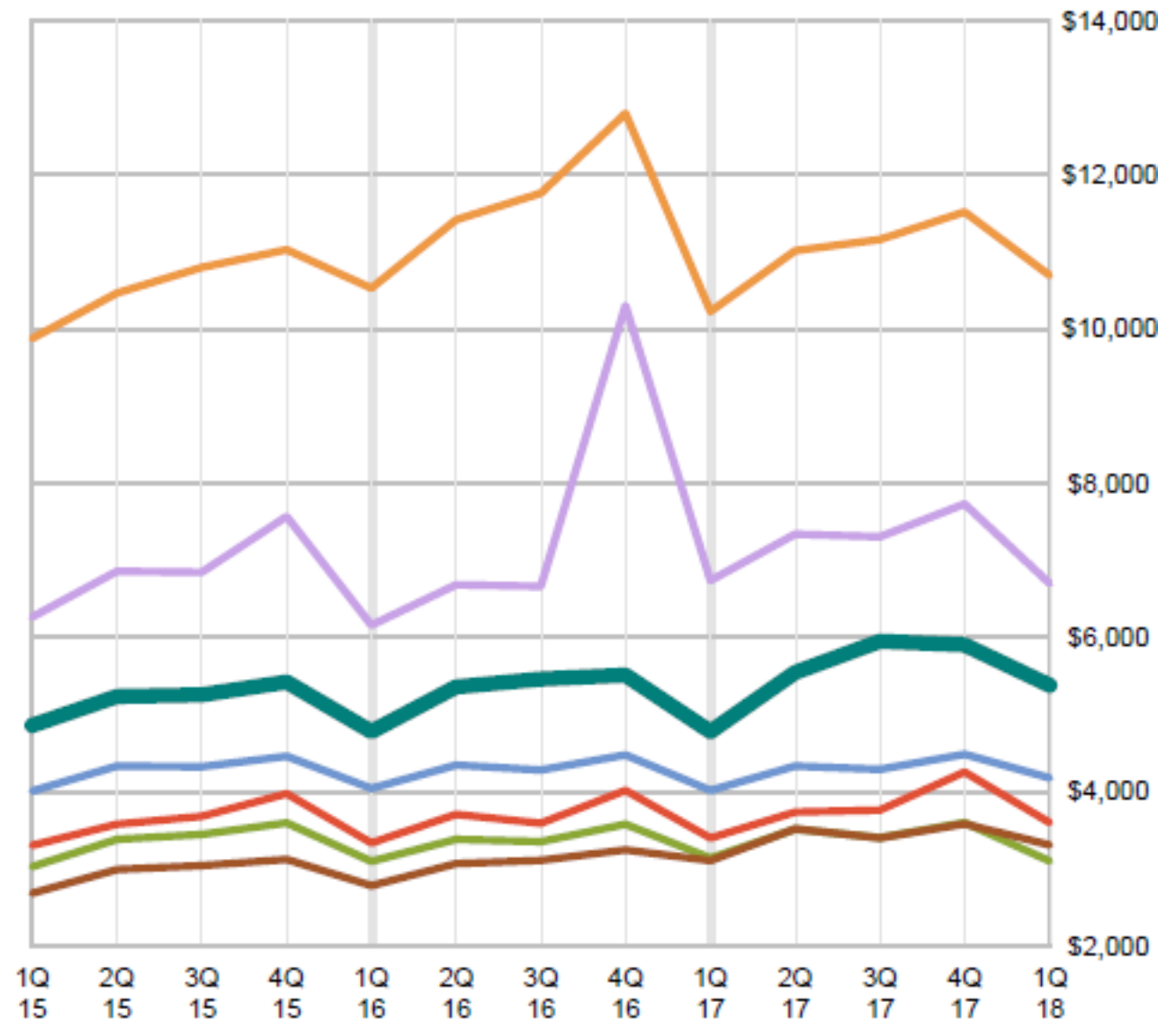
Count: 4,352

Rancho Cucamonga

Count: 5,239

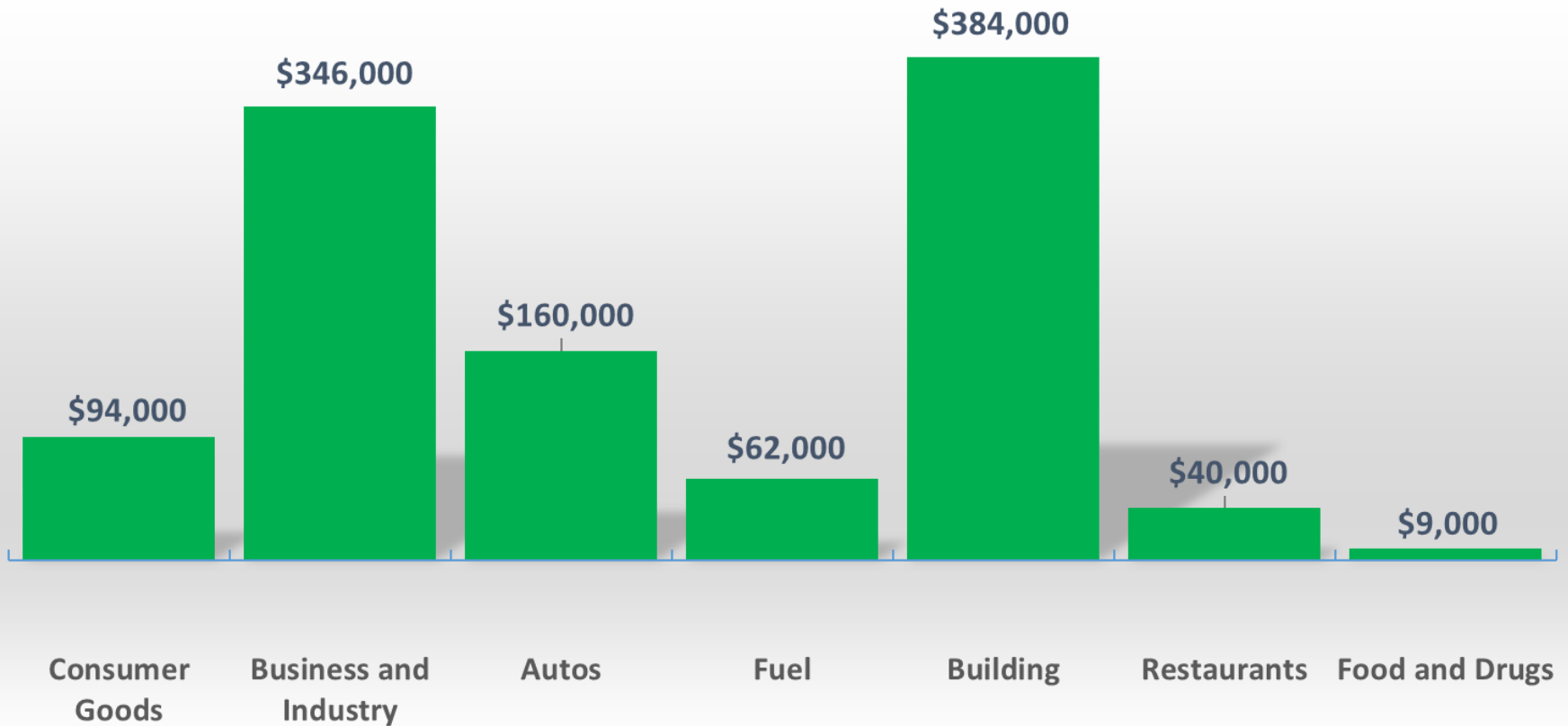
Murrieta

Count: 3,011



CORONA MAJOR GROUPS-1Q18

Adjusted for Payment Aberrations
\$ Increase (or Decrease) by Category



CORONA MAJOR INDUSTRY GROUPS (Top 3)

Building And Construction

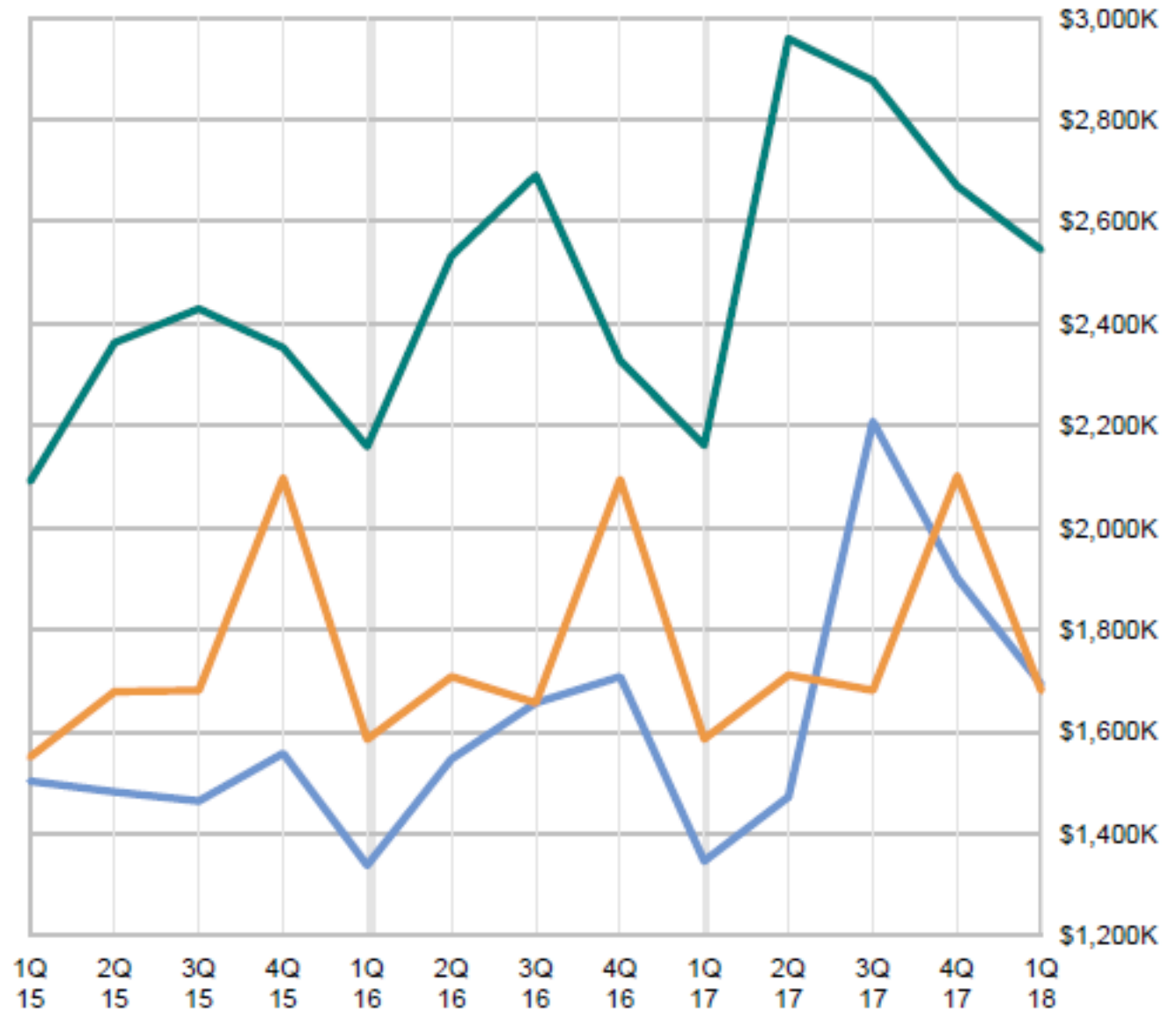
Count: 298

Business And Industry

Count: 1,574

General Consumer Goods

Count: 1,886



CORONA MAJOR INDUSTRY GROUPS (Final 5)

Autos And Transportation

Count: 412

State & County Pools

Restaurants And Hotels

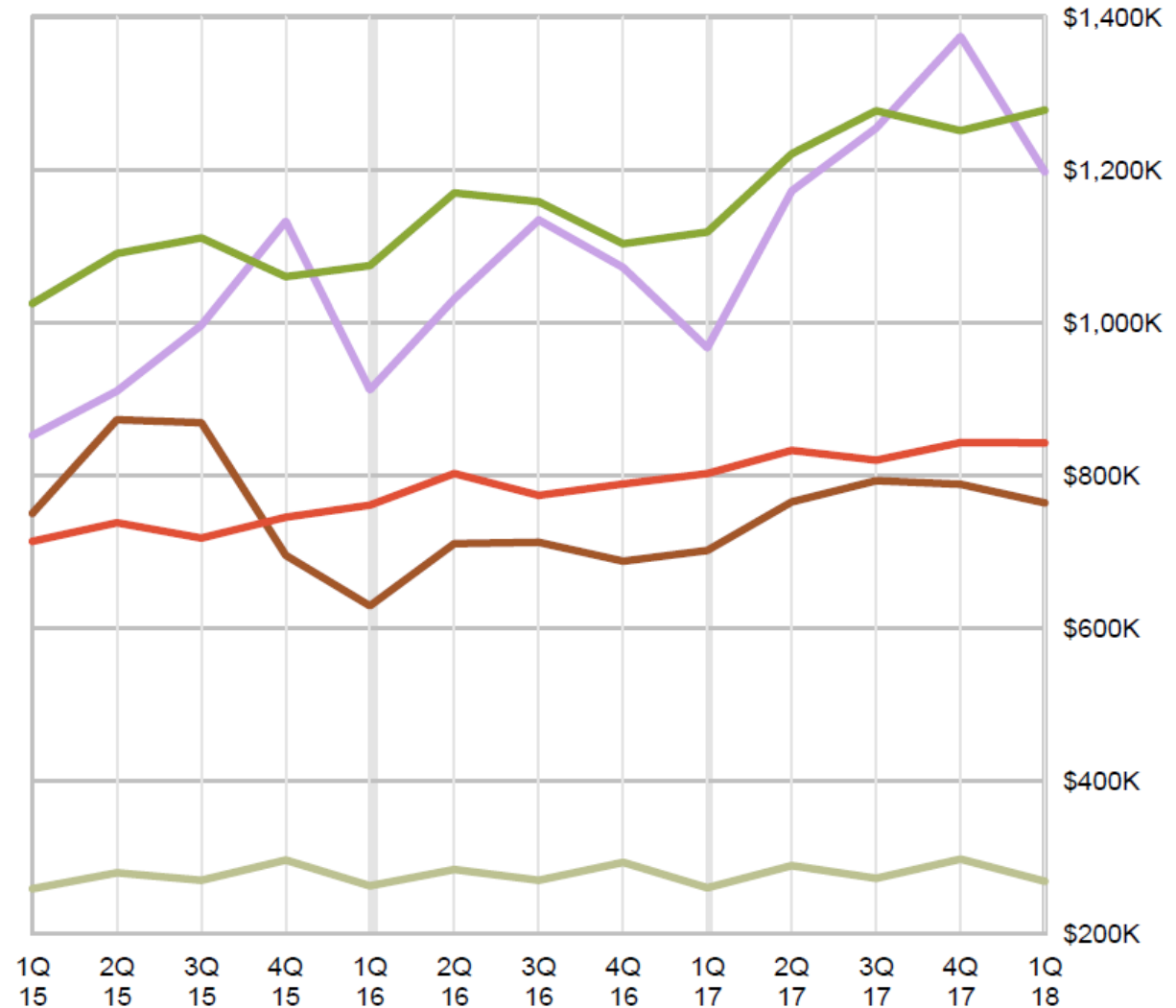
Count: 402

Fuel And Service Stations

Count: 49

Food And Drugs

Count: 157



CORONA

ADJUSTED POINT-OF-SALE - SALES TAX TREND

13 QTR Trend: +19.8%

