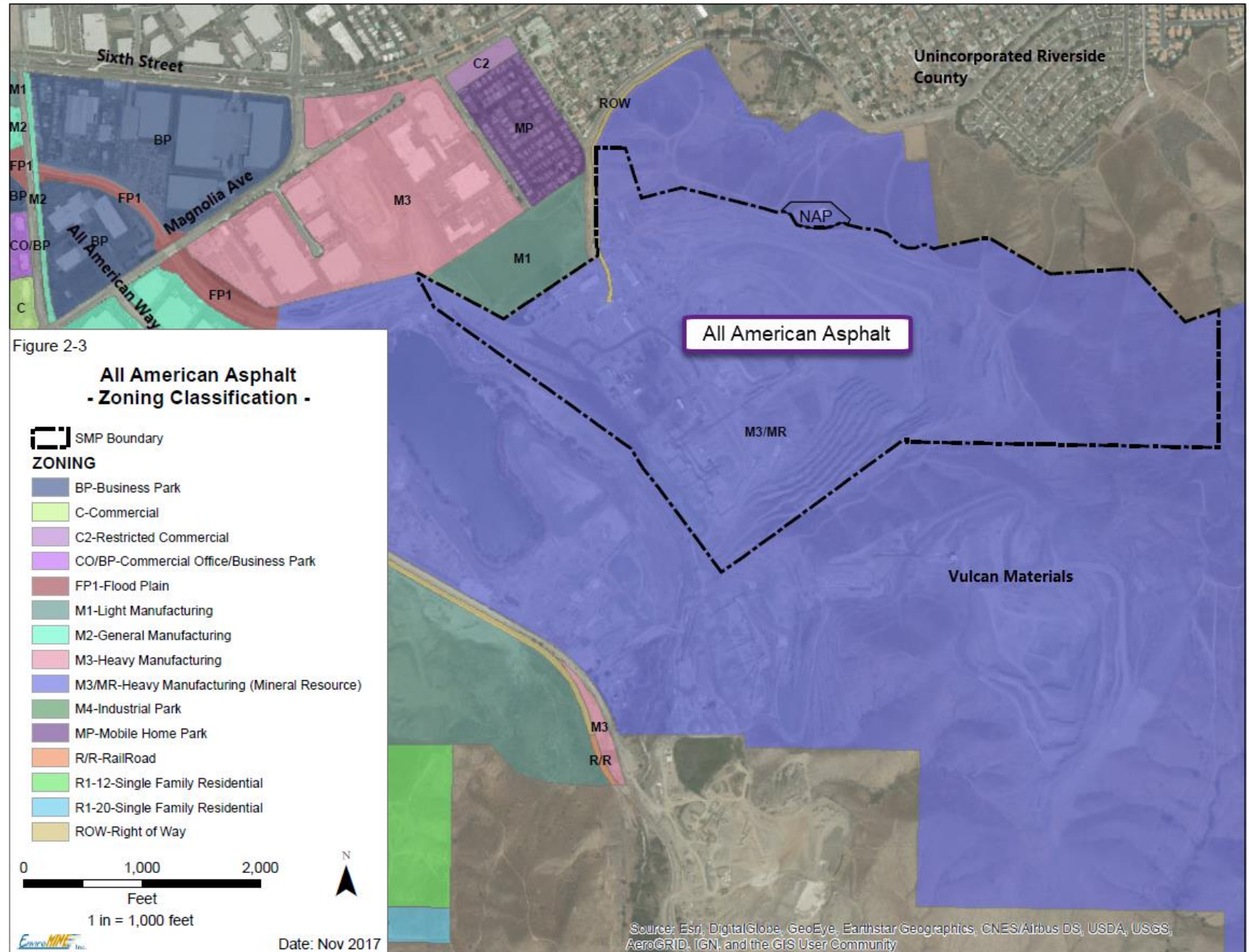


Applications for All American Asphalt

- Development Agreement
(DA2018-0002)
- Surface Mine Permit
Amendment
(SMP2017-0101)
- Surface Mine Reclamation
Plan Amendment
(SMRP2018-0001)



Mining History (All American Asphalt Site)

Riverside County

- ❖ Mining dates back to 1930's
- ❖ Permit history started in 1979 in Riverside County
 - SMP115, SMP151 & SMP158
 - Environmental Review: Negative Declaration

City of Corona

- ❖ Property annexed to city in 1991
- ❖ City issued a Surface Mine Permit 1991
 - SMP90-01
 - Environmental Review: Mitigated Negative Declaration
- ❖ Surface Mine Permit Amendment 1995
 - SMP95-1 (operate an inert debris landfill)
 - Environmental Review: Subsequent Negative Declaration
- ❖ Surface Mine Permit Amendment 2002
 - SMP95-1M (increase depth from 614' to 500' amsl)
 - Environmental Review: Exempt
 - Permit Expiration: 2021

**UPDATE OF MINERAL LAND CLASSIFICATION
FOR PORTLAND CEMENT CONCRETE-GRADE
AGGREGATE IN THE TEMESCAL VALLEY
PRODUCTION AREA, RIVERSIDE COUNTY,
CALIFORNIA**

2014



CALIFORNIA GEOLOGICAL SURVEY
Department of Conservation

THE NATURAL RESOURCES
AGENCY
JOHN LAIRD
SECRETARY FOR RESOURCES

STATE OF CALIFORNIA
EDMUND G. BROWN JR.
GOVERNOR

DEPARTMENT OF CONSERVATION
MARK NECHODOM
DIRECTOR

MINERAL RESOURCE ZONES

As set forth in Section 2761 (b) of SMARA, "... the State Geologist shall classify, on the basis solely of geologic factors, and without regard to existing land use..." Areas subject to mineral land classification are divided by the State Geologist into various Mineral Resource Zone (MRZ) categories that reflect varying degrees of mineral resource potential.

- MRZ-1:** Areas where available geologic information indicates that little likelihood exists for the presence of significant mineral resources.
- MRZ-2:** Areas where adequate information indicates that significant mineral deposits are present, or where it is judged that a high likelihood for their presence exists. This zone shall be applied to known mineral deposits or where well-developed lines of reasoning, based upon economic-geologic principles and adequate data, demonstrate that the likelihood for occurrence of significant mineral deposits is high.
- MRZ-3:** Areas containing mineral occurrences of undetermined mineral resource significance.
- MRZ-4:** Areas where available information is inadequate for assignment to any other MRZ category (No areas were classified MRZ-4 in this report).

**UPDATE OF MINERAL LAND CLASSIFICATION
FOR PORTLAND CEMENT CONCRETE-GRADE
AGGREGATE IN THE TEMESCAL VALLEY
PRODUCTION AREA, RIVERSIDE COUNTY,
CALIFORNIA**

2014

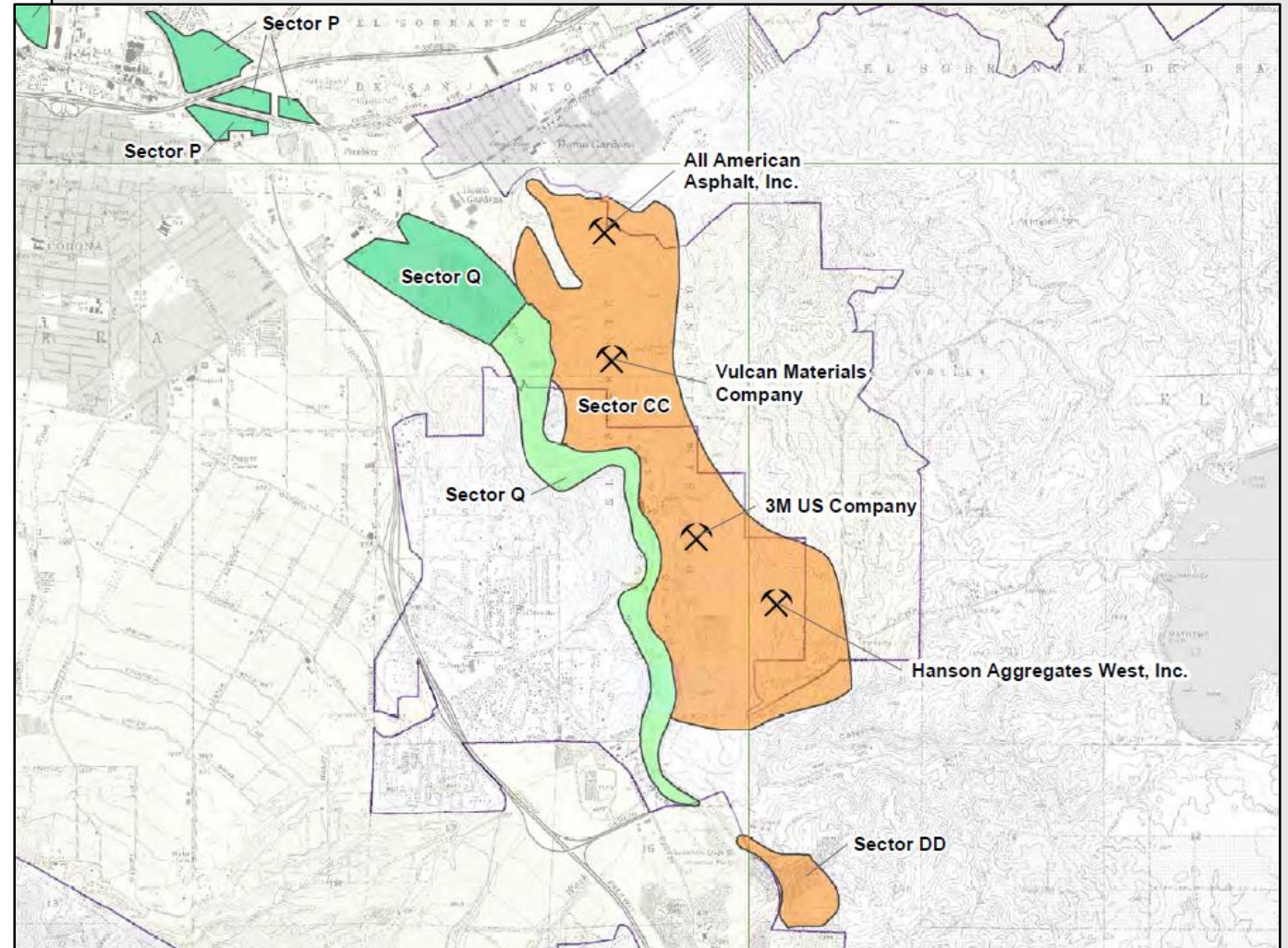


CALIFORNIA GEOLOGICAL SURVEY
Department of Conservation

**THE NATURAL RESOURCES
AGENCY**
JOHN LAIRD
SECRETARY FOR RESOURCES

STATE OF CALIFORNIA
EDMUND G. BROWN JR.
GOVERNOR

DEPARTMENT OF CONSERVATION
MARK NECHODOM
DIRECTOR



**UPDATE OF MINERAL LAND CLASSIFICATION
FOR PORTLAND CEMENT CONCRETE-GRADE
AGGREGATE IN THE TEMESCAL VALLEY
PRODUCTION AREA, RIVERSIDE COUNTY,
CALIFORNIA**

2014

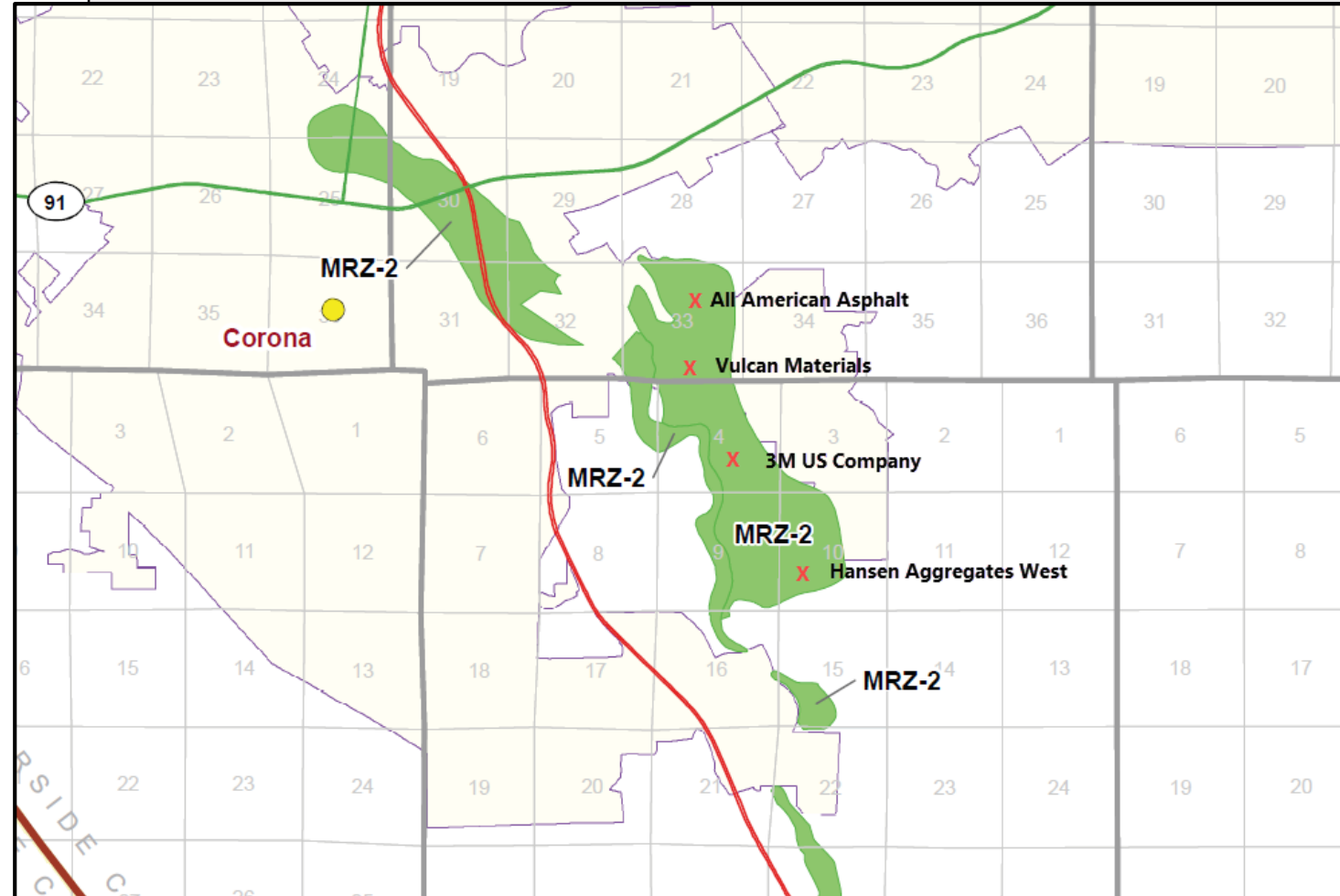


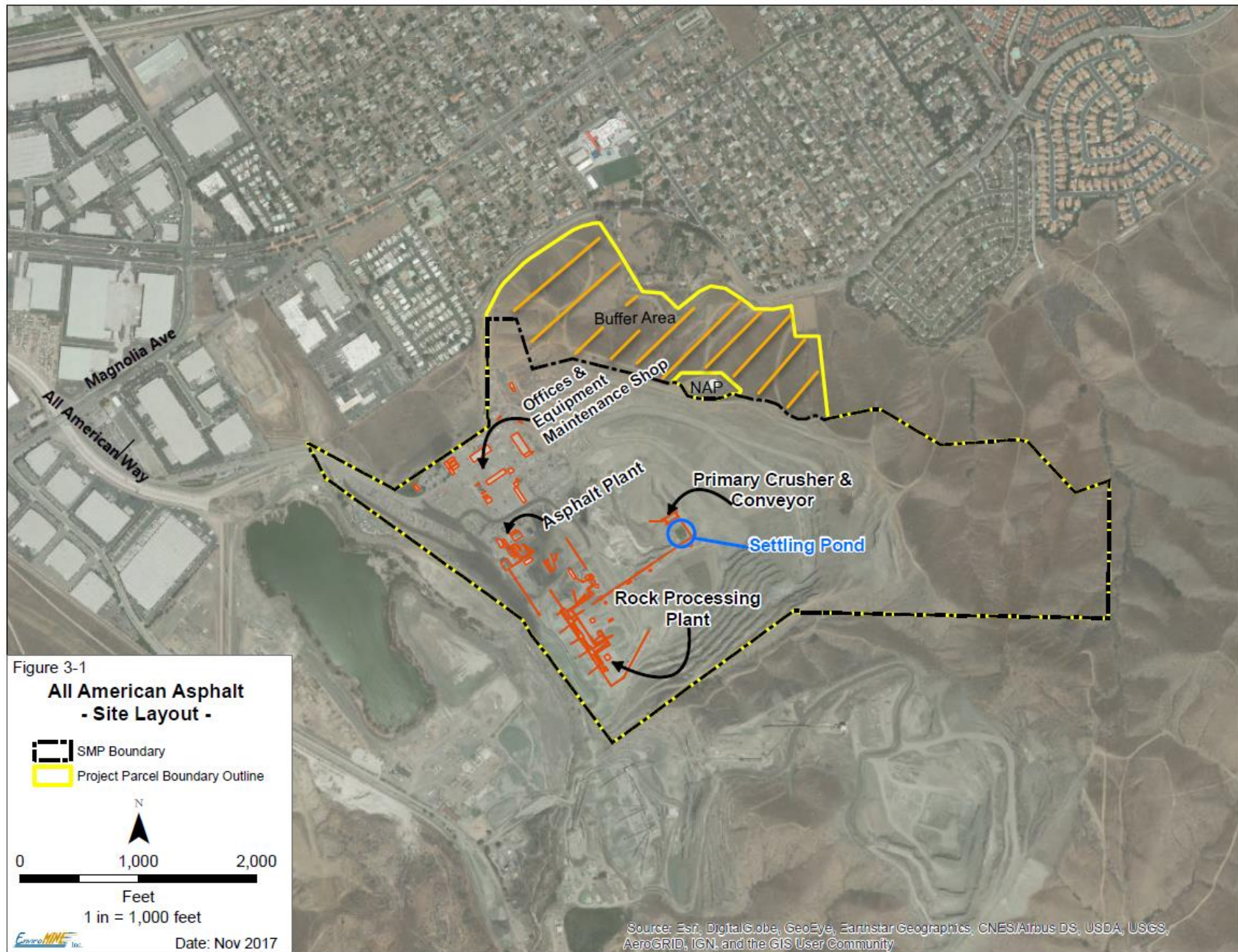
CALIFORNIA GEOLOGICAL SURVEY
Department of Conservation

**THE NATURAL RESOURCES
AGENCY**
JOHN LAIRD
SECRETARY FOR RESOURCES

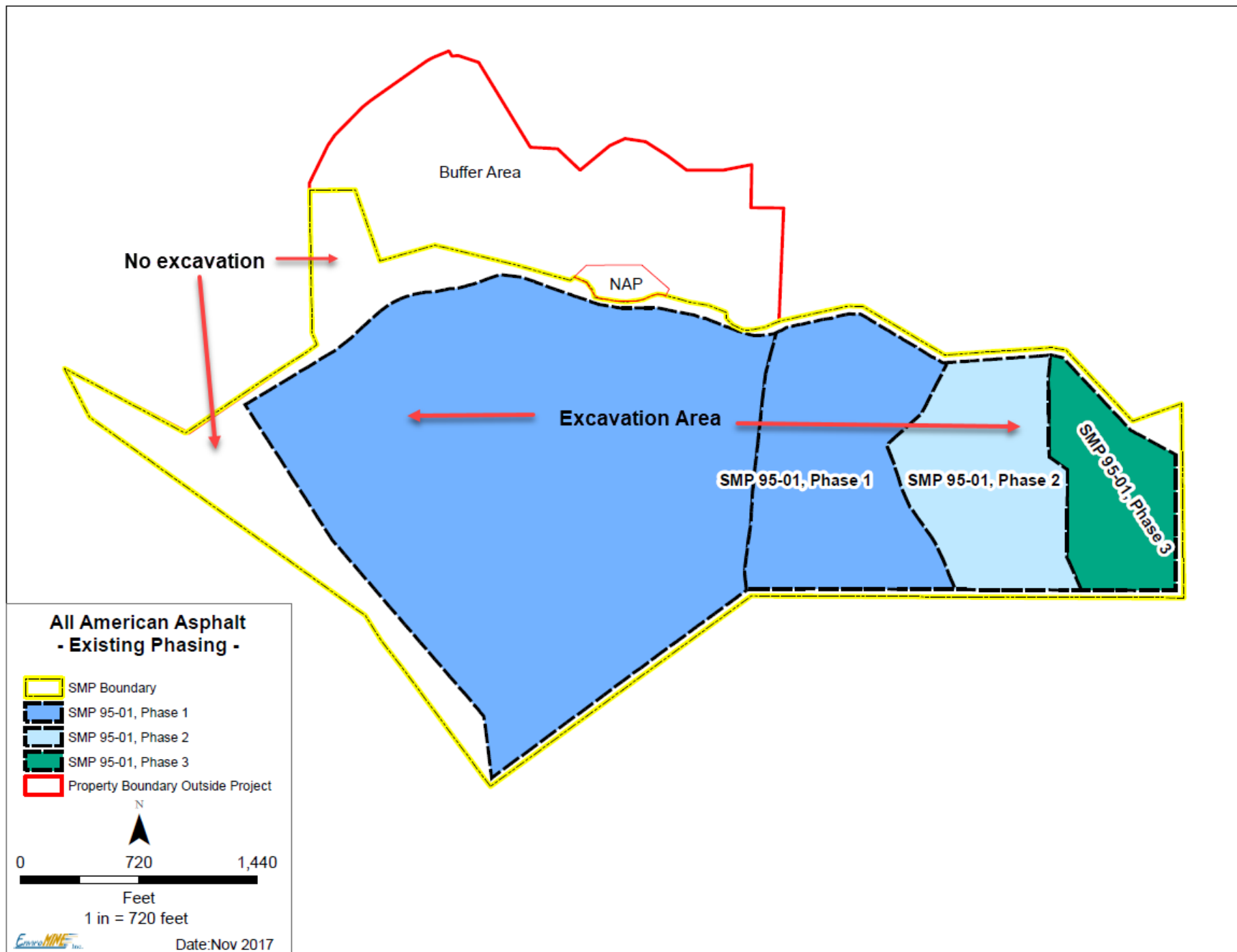
STATE OF CALIFORNIA
EDMUND G. BROWN JR.
GOVERNOR

DEPARTMENT OF CONSERVATION
MARK NECHODOM
DIRECTOR





Existing Phasing



Phase 1 and 2

Buffer Area

NAP

Processing Plant

Phase 2 - Fill

Phase 1-Extraction

This map illustrates the layout of Phase 1 and Phase 2. The Processing Plant is located on the left side. Phase 2 - Fill is the central light blue area, and Phase 1-Extraction is the darker blue area to its right. A Buffer Area is indicated by a dashed line, and the NAP (National Antiquities Act) boundary is shown as a red outline. The map is titled 'Phase 1 and 2'.

Phase 2 - Fill

Processing Plant

Phase 2 - Fill

Phase 1-Extraction

CY CUT = 50,960,000 (Down to 500')
CY CUT = 56,300,000 (Down to 400')
AREA = 165.9 Ac

AMENDMENT NO. 2 JULY 2017

Buffer Area

SMP BOUNDARY

Revised Phase 1

No excavation

ALL AMERICAN ASPHALT

- (3) USED ASPHALT STORAGE AREA
- (7) LANDFILL MATERIAL STORAGE AREA
- (8) EXISTING TRUCK SCALE
- (A) FINISHED AGGREGATE STORAGE AREA
- (N) FUEL STATION
- (V) FILLING POND

SMP BOUNDARY



ROCK PLANT

SEE SHEET NO. 1 FOR SECTIONS

PROBABILITY AND TARIFFS IN INTERNATIONAL TRADE

TABLE 1. A. PETERLIN, 1954a

REC

**Civil Engineering-Environmental
Land Surveying**
2443 Second Ave. S.
San Diego, CA 92101
619/594-5000 (inland) 619/594-1100

ALL AMERICAN ASPHALT
CORONA PLANT
S.M.P. 95-1
AMENDMENT NO. 2

2
ca. 7

ALL AMERICAN ATHLETIC

Phase 1 and 2

Buffer Area

NAP

Processing Plant

Phase 2 - Fill

Phase 1-Extraction

The map shows a site layout with a white area labeled 'Processing Plant' on the left. To its right is a light blue area labeled 'Phase 2 - Fill'. Further right is a darker blue area labeled 'Phase 1-Extraction'. A dashed black line labeled 'Buffer Area' separates the Processing Plant from the other areas. A red line outlines the perimeter of the site. A small red circle labeled 'NAP' is located near the Buffer Area.

Phase 2 - Fill



Processing Plant

Phase 1-Extraction

CY FILL = 14,416,000 (Up to 580' from 400' Base)

ALL AMERICAN ASPHALT
S.M.P. 95-1
COMPREHENSIVE MINING PLAN
AMENDMENT NO. 2 JULY 2017



Buffer Area

NAP

SMP BOUNDARY

[illegible]

... ..

EXCAVATION/PROPERTY
BOUNDARY 220 AC.

— 307 —

940 LITVAK

SMP BOUNDARY

EXCAVATION/PROPERTY
BOUNDARY 229 AC.

Figure 1

ASPHALT PLANT

ROCK PLANT

SEE SHEET NO. 1 FOR SECTIONS

Revised Phase 2

No excavation



REC Civil Engineering-Environmental
Land Surveying
2440 Second Avenue
San Diego, CA 92104
(619) 594-9000 • (619) 594-9001

ALL AMERICAN ASPHALT
CORONA PLANT
S.M.P. 95-1
AMENDMENT NO. 2

3

ALL AMERICAN ASPHALT

The map illustrates the proposed industrial development site, divided into three main phases. Phase 1 is the largest area, colored light blue, and contains the Processing Plant. Phase 2 is a smaller area, colored green, located adjacent to Phase 1. Phase 3 is the smallest area, colored dark green, located adjacent to Phase 2. A Buffer Area is shown as a dashed black line surrounding the site. The NAP (National Aquifer Protection) boundary is indicated by a red line. The map also shows the location of the Processing Plant and the Phase 3 Extraction area.

e 2

Processing Plant

Phase


CY CUT = 11,200,000 (Down to 500')
CY CUT = 15,850,000 (Down to 400')
AREA = 49.8 Ac

SCALE: 1" = 100'

UNDARY-
53.2 AC.

EXCAVATION
BOUNDARY 22B AC

U.S. WATER TREATMENT



SMP BOUNDARY

CC BY-NC-ND 4.0 International license.

EXCAVATION/PROPERTY
BOUNDARY 220 AC.

PROCESSING
PLANT
LOCATION

5MP HIGHWAY
26.3.2 AC.

SMP BOUNDARY-

EXCAVATION/PROPER
BOUNDARY 229 AC.

\SMF BOUNDARY

SEE SHEET NO. 1 FOR SECTIONS



PREPARED UNDER THE SUPERVISION OF

TABLE 4. PRESENTATION

REC

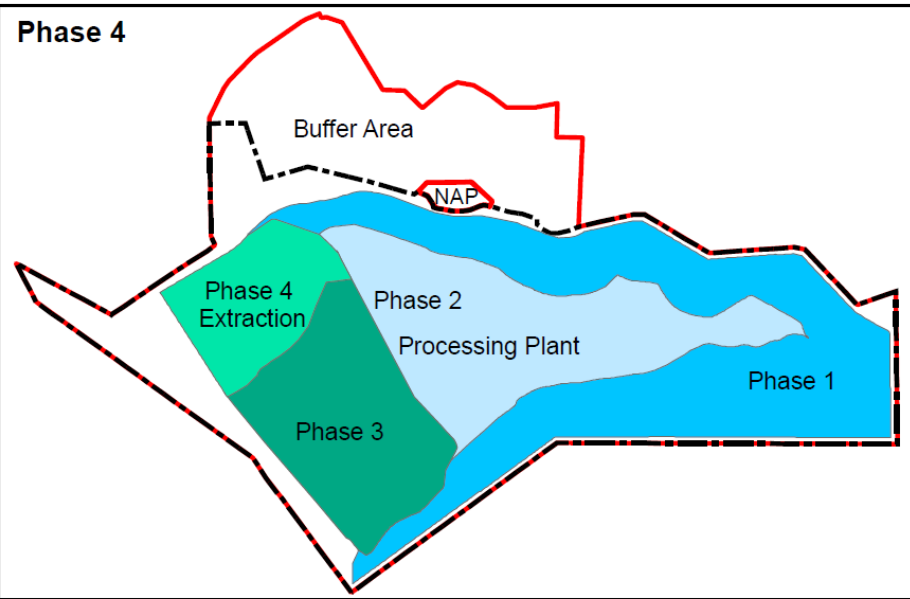
**Civil Engineering-Environmental
Land Sampling**
2442 Second Avenue
San Diego, CA 92103
(619) 521-8189 • (619) 523-5240 Fax

ALL AMERICAN ASPHALT
CORONA PLANT
S.M.P. 95-1
AMENDMENT NO. 2

4

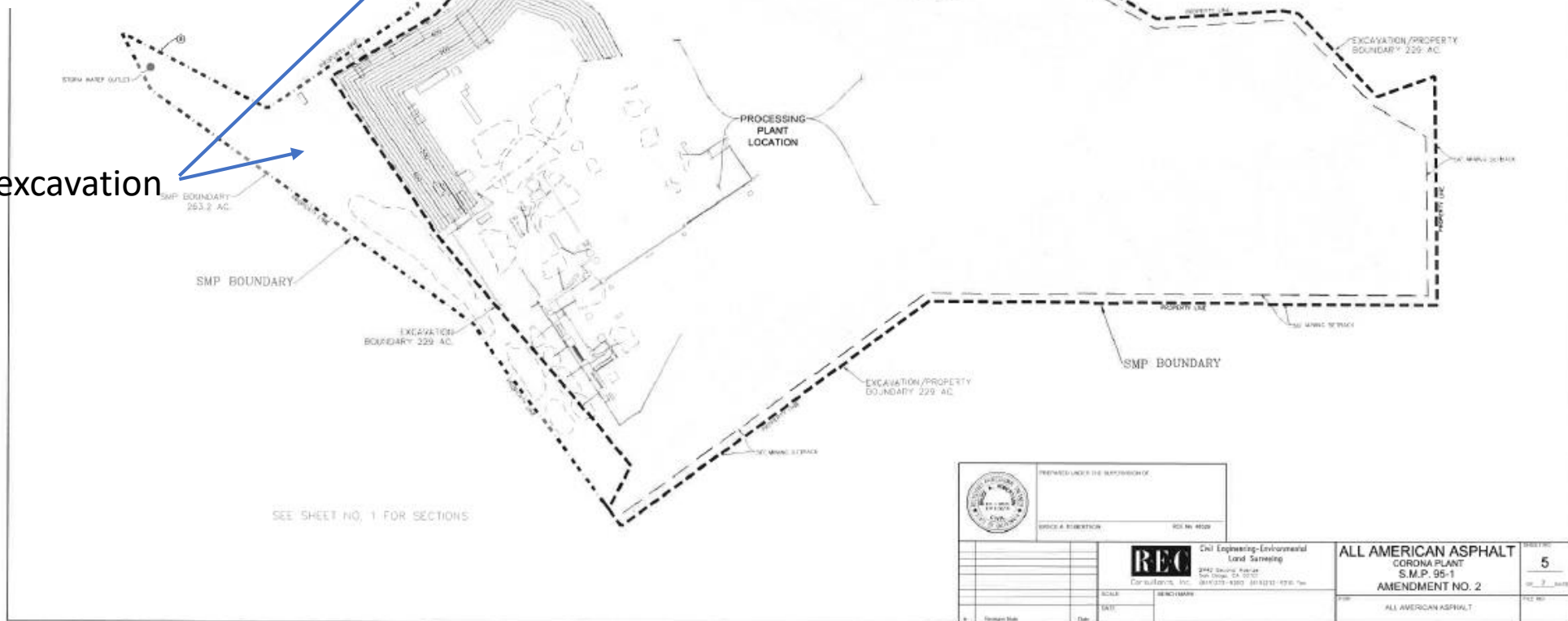
ALL AMERICAN ASPHALT

Phase 4

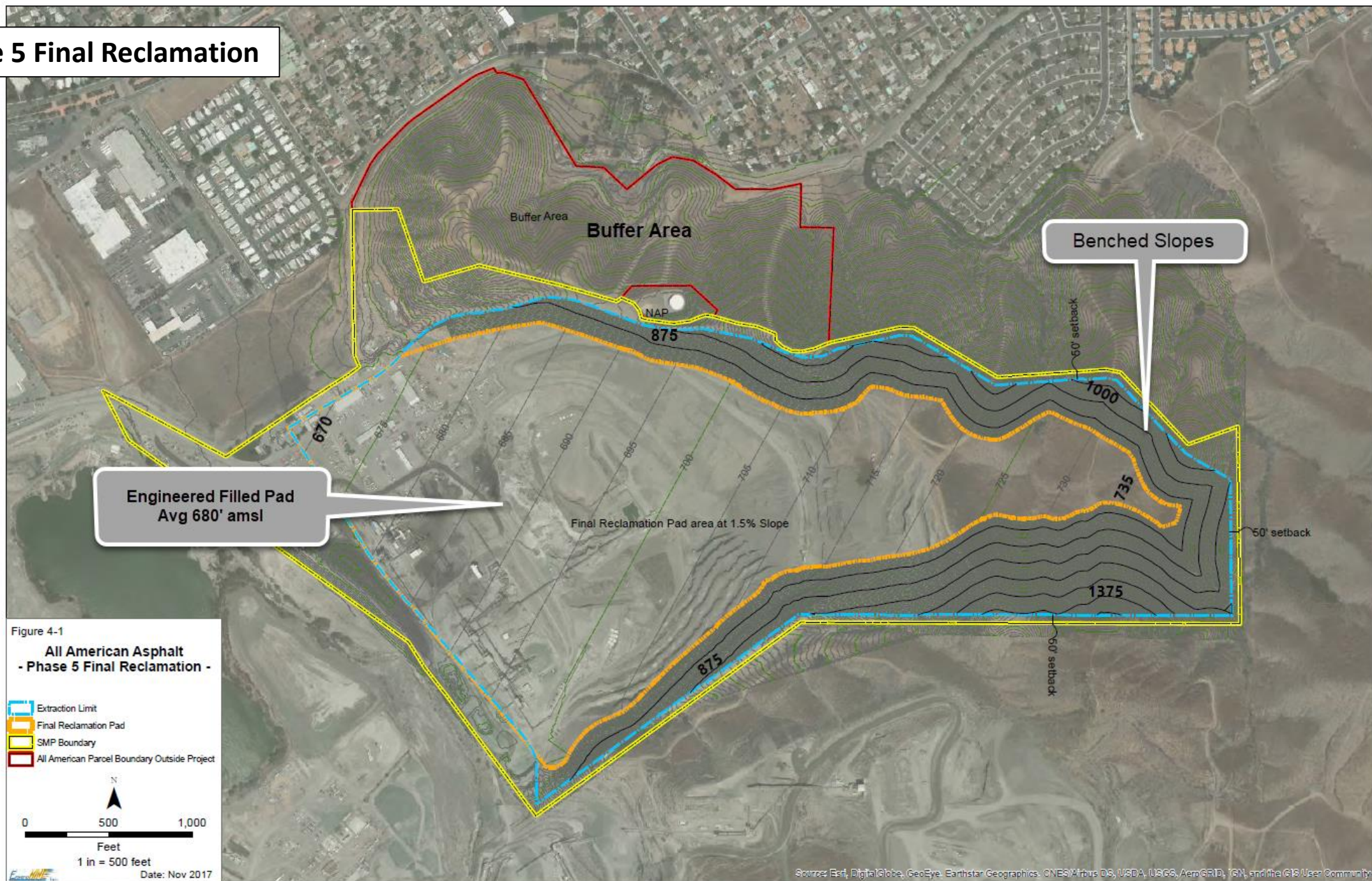


Revised Phase 4

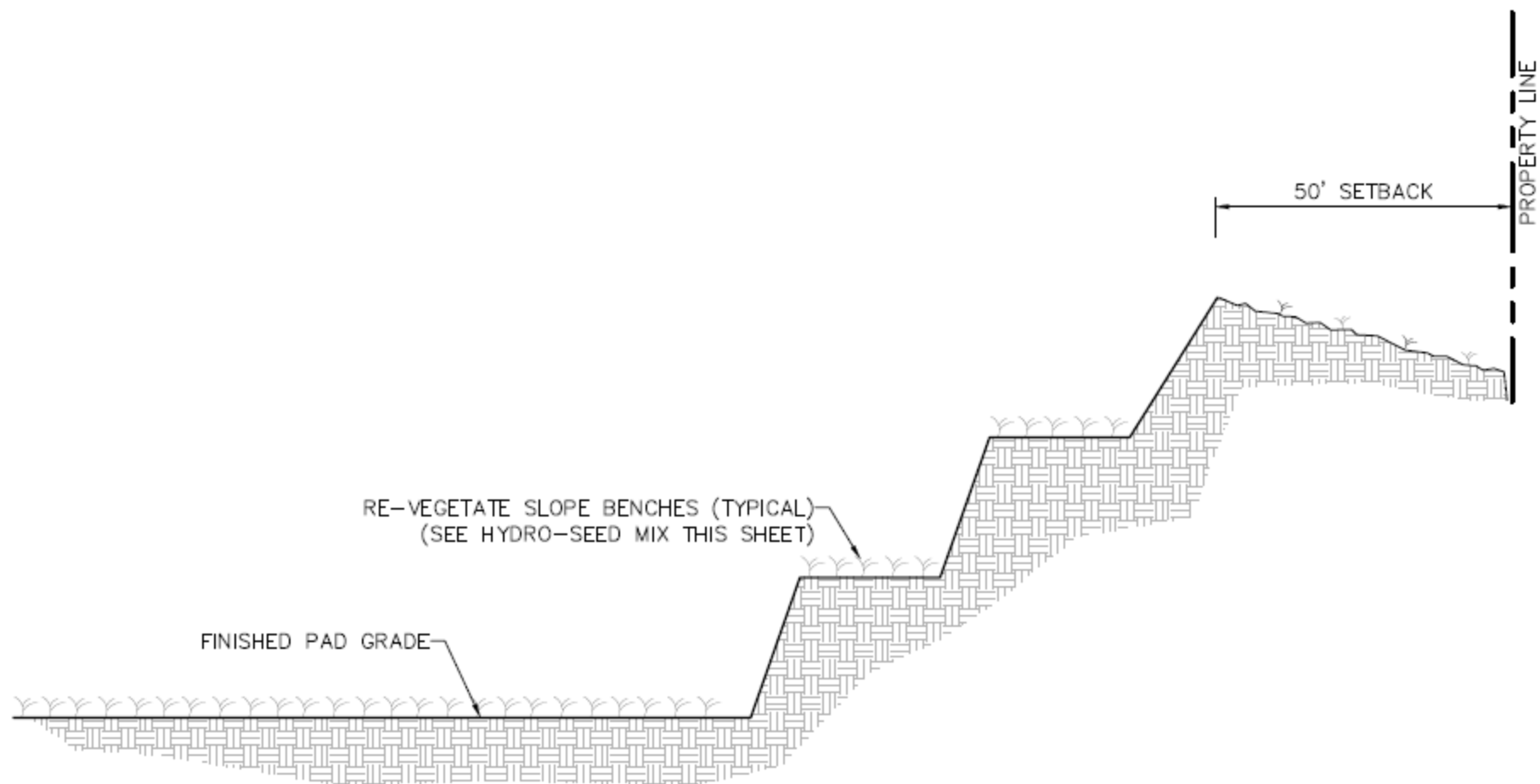
No excavation



Phase 5 Final Reclamation



Slope Cross Section at Reclamation



SECTION 1

QUARRY SLOPE

Development Agreement

Private Benefit



**Vested Right to Operate
100 years or
Sooner of exhaustion of reserves**

Public Benefit



Extraction Royalty Payment to City

Portland Cement Concrete (PCC)
\$0.05/ton

Non PCC
\$0.03/ton

- Development Agreement is in addition to an existing Operating Covenant Agreement between AAA and City
 - City also receives the sales revenue from their sales outside the city
 - City will share sales revenue with AAA after a certain threshold
 - AAA agrees to maintain 596 full time jobs in the city

CORONA, CA

Financial Plan: Fiscal Years 2018-2019 and 2019-20
Adopted Budget: Fiscal Year 2018-19



Cherishing our Past, Planning our Future.



ABOUT THE CITY OF CORONA

TOP 25 SALES TAX PRODUCERS

Alphabetical order, FY 2016-17

Agile Sourcing Partners	Home Depot
All-American Asphalt	Honda Cars of Corona
American Electric Supply	Kohls
Anixter	Larry H Miller Toyota
Best Buy	Proparts
Cardinale Volkswagen, Hyundai, Mazda	Robertsons Ready Mix
Chevron	Ross
Costco	Sams Club
Culver Newlin	Stater Brothers
Downs Commercial Fueling	Target
Ganahl Lumber	Vulcan Materials
Guest Supply	Walmart
Hansen Beverage	



TOP 10 LARGEST EMPLOYERS, 2017

Employer	Sector	# Jobs
Corona-Norco Unified School District	Education	5,098
Corona Regional Medical Center	Health Services	1,113
Kaiser Permanente	Health Services	995
All-American Asphalt	Construction	842
City of Corona	Government	749
Fender USA	Manufacturing	600
TWR Framing Enterprises	Construction	600
Monster Energy	Distribution	544
CoreMark International	Manufacturing	421
Dart Container	Manufacturing	420

Based on information from Hinderliter, de Llamas & Associates

- AAA operates in compliance with all required permits
 - State Industrial Activities Storm Water General Permit & General De Minimis Permit.
 - monitoring on-site water quality
 - Industrial Storm Water Pollution Prevention Plan – data submitted to Santa Ana Regional Water Quality Control Board.
 - General De Minimis Permit by SARWQB for discharge water.
 - monthly monitoring of groundwater processing water collected in the pit
 - Permit from Dept. Environmental Health for Inert Debris Landfill on the site.
 - Permit from AQMD for equipment operation.
- Maintain regular annual surface mine inspections with the city and submittals to DOC.

Mitigate Impacts to Less Than Significant

- Geologic Conditions during excavation
- Hydrology and Water Quality
- Biological Resources
- Tribal Cultural Resources

State Clearinghouse Review:

August 23, 2018 through September 25, 2018

- One Comment Letter
 - AQMD

**Department of Conservation, Division of
Mining and Reclamation**

- Reviewed Reclamation Plan Amendment
- Conference Call with DMR staff on Oct. 1, 2018
- Received DMR comments on Reclamation Plan Amendment
- City responses resubmitted to DMR

