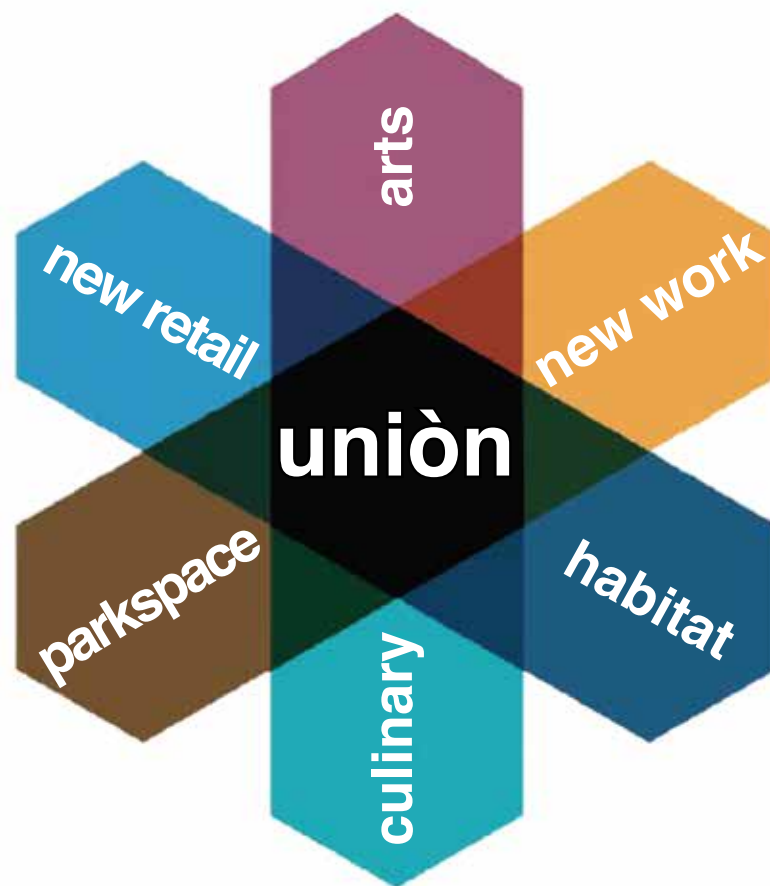


uniòn



project principles

districtwide planning
layered experience
park as place
music space
repurpose
local



create the element of surprise through layered experience and hidden elements.



layered

activate open space:

- outdoor dining
- community gathering
- performance
- outdoor market
- recreation



park as place

multiple venues for
performance infused
into project:

- music venue
- community bandshell
- speakeasy jazz club
- district music festivals
- mini stages



music space



esodjrnpoe
reporpoes

represent the best of
what Corona is and
what makes it unique
from surrounding cities.



local

uniòn



1

SOUTH MALL

- speakeasy shops
- events venue
- main street services
- brewery

2

NORTH MALL

- garden mall
- culinary hub
- market
- maker space
- education/office
- retail alleys

3

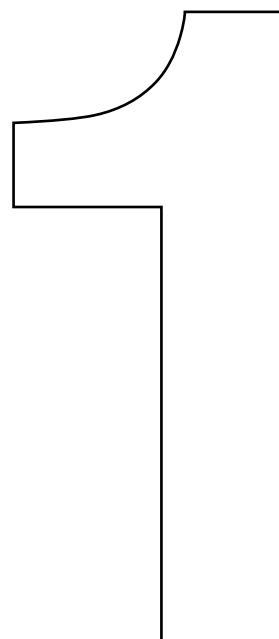
EAST PARKING LOT

- mixed use residential
- 6th street activation

4

DISTRICT

- expand development
- offsite parking
- addt. mixed use housing
- activate edges



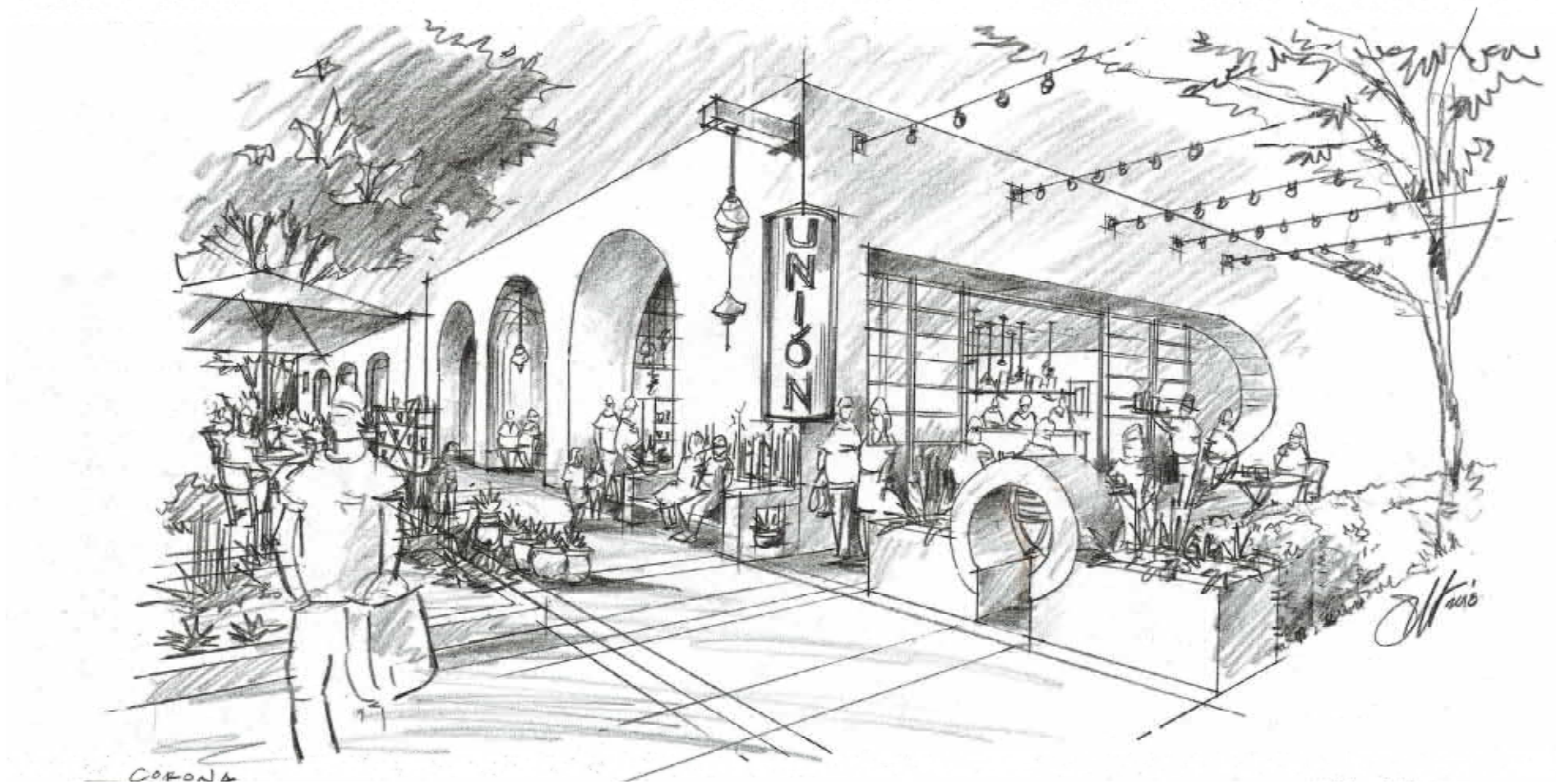


SOUTH MALL





NORTH MALL

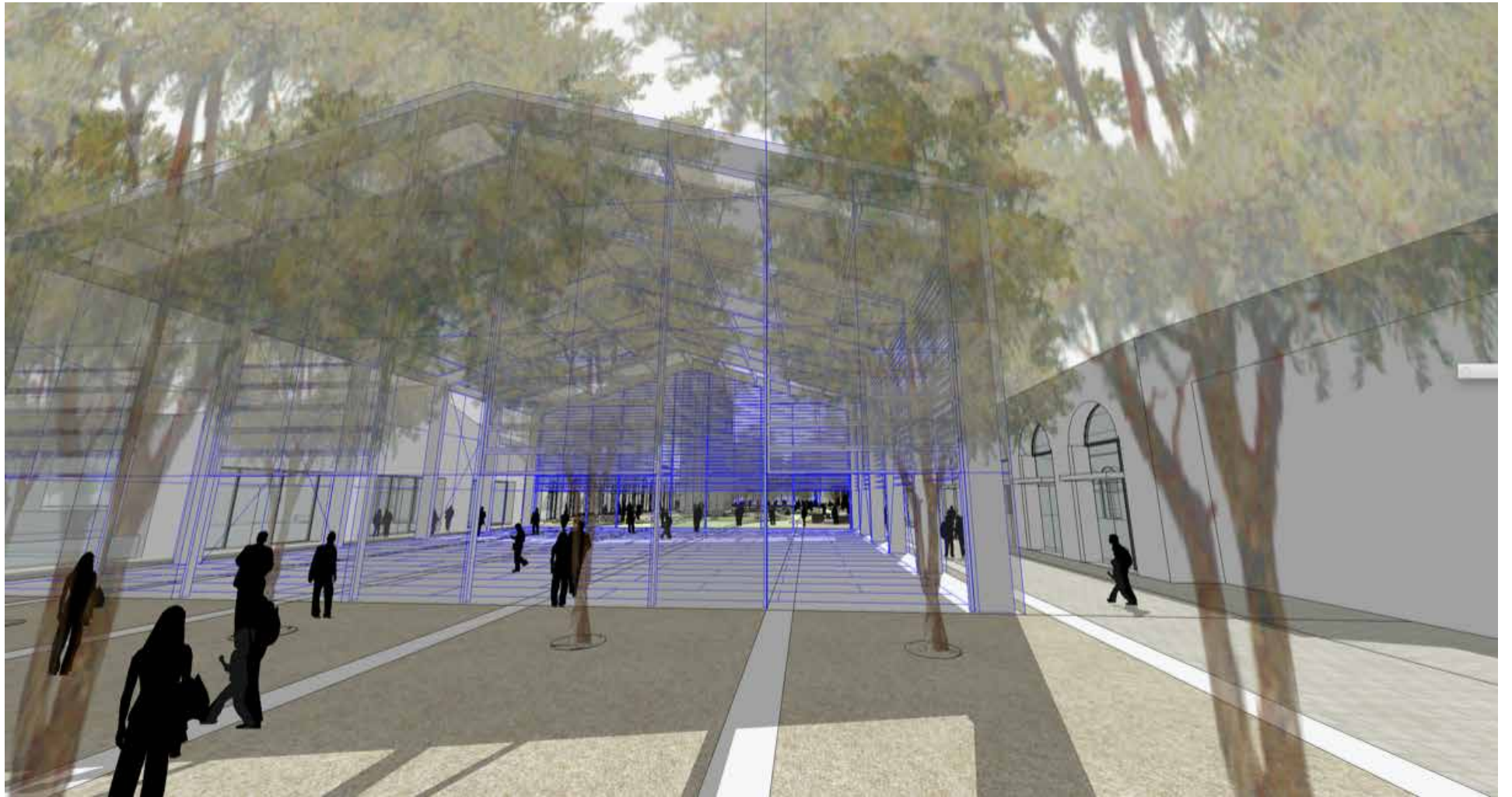








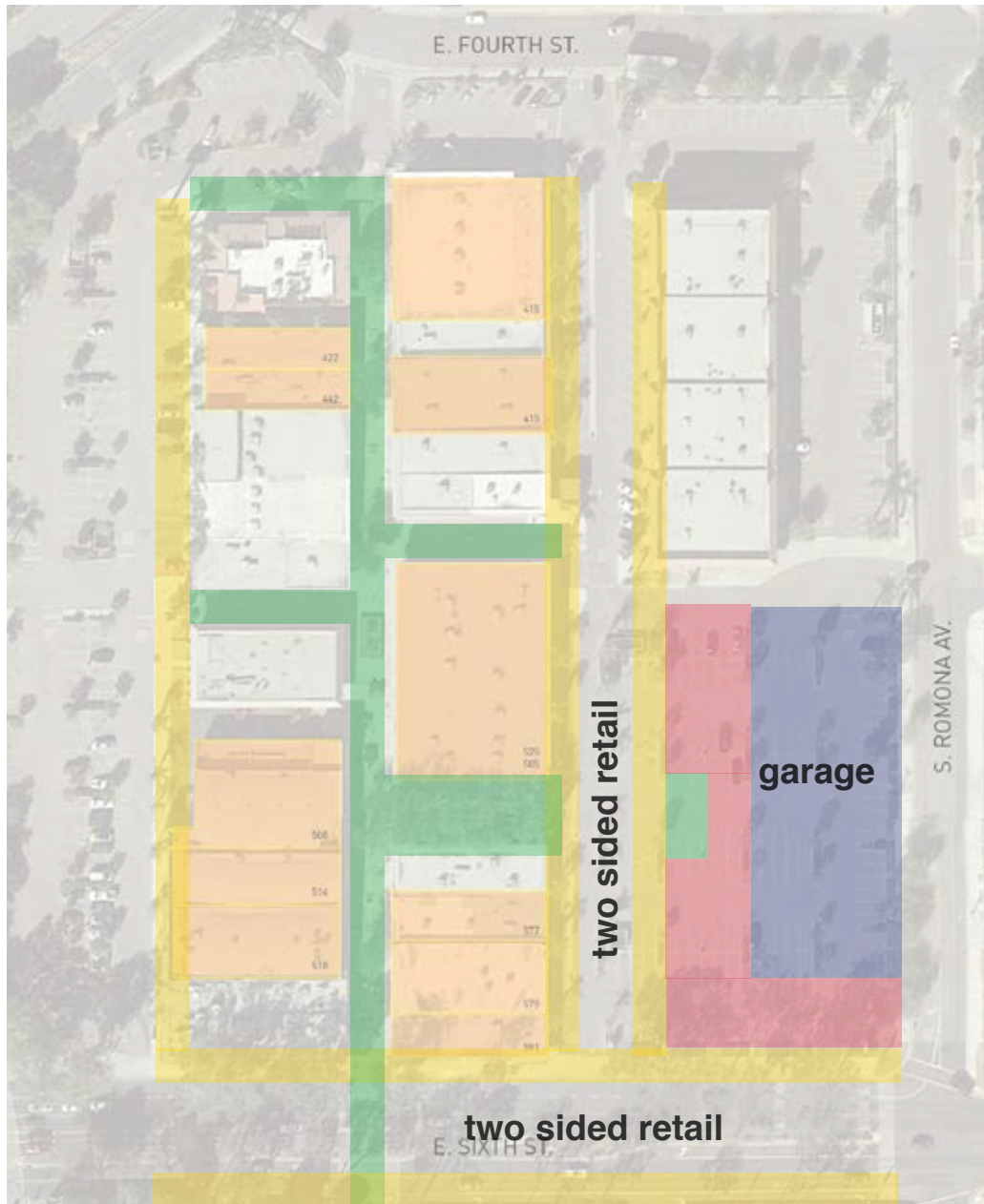
GREENHOUSE





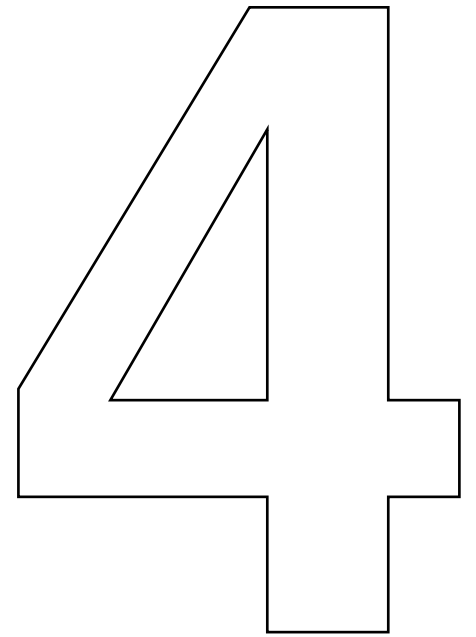


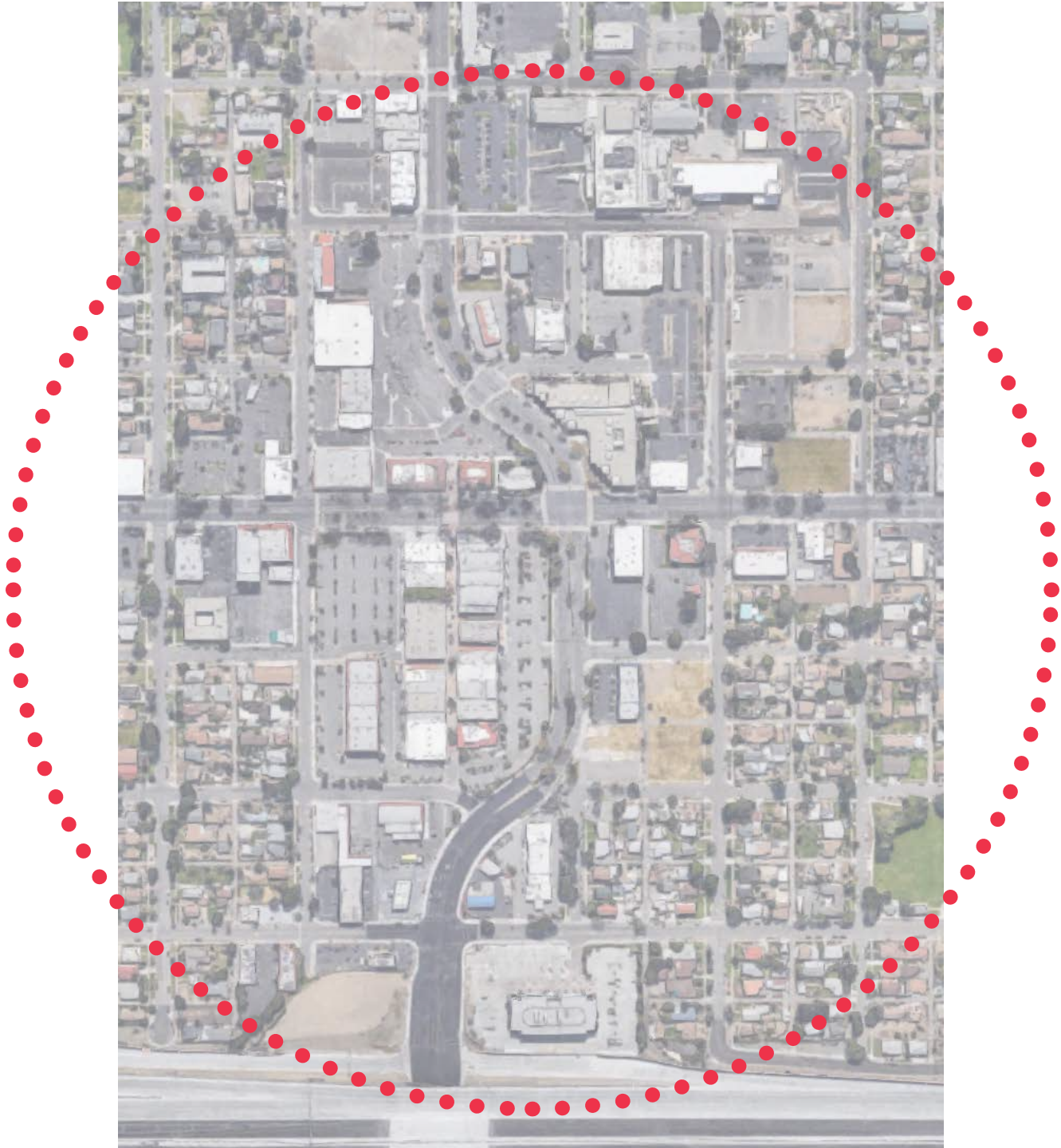
3



EAST PARKING LOT







DISTRICT



thank you

The LAB Holding rights in certain property: Design concept, design drawings, renderings, models, specifications, electronic files, “SPRING” branding and brand development (including, but not limited to, CAD, databases and spreadsheets), and other derivations that are part of the Project are the intellectual property of The LAB Holding, LLC, are intended for use solely with respect to this Project, and unless otherwise provided, The LAB Holding, LLC will be deemed the author of these documents and will retain all common law, statutory and other reserved rights, including the copyright. Client will be permitted to retain copies, including reproducible copies, of The LAB Holding, LLC’s drawings, specifications or other documents, including such expressed on electronic media; however, such copies will not be used by Client or others on other projects, for additions to this Project, or for completion of this Project by others, unless The LAB Holding, LLC is adjudged to be in default under this Agreement, except by agreement in writing and with appropriate compensation to The LAB Holding, LLC. Reuse without The LAB Holding, LLC’s professional involvement will be at Client’s sole risk and without liability to The LAB Holding, LLC. Client will indemnify and hold harmless The LAB Holding, LLC, The LAB Holding, LLC’s consultants and agents and employees or any of them from and against claims, damages, losses and expenses, including but not limited to reasonable attorneys’ fees, arising out of unauthorized reuse of drawings, specifications, electronic data and other instruments that are part of the Project.