



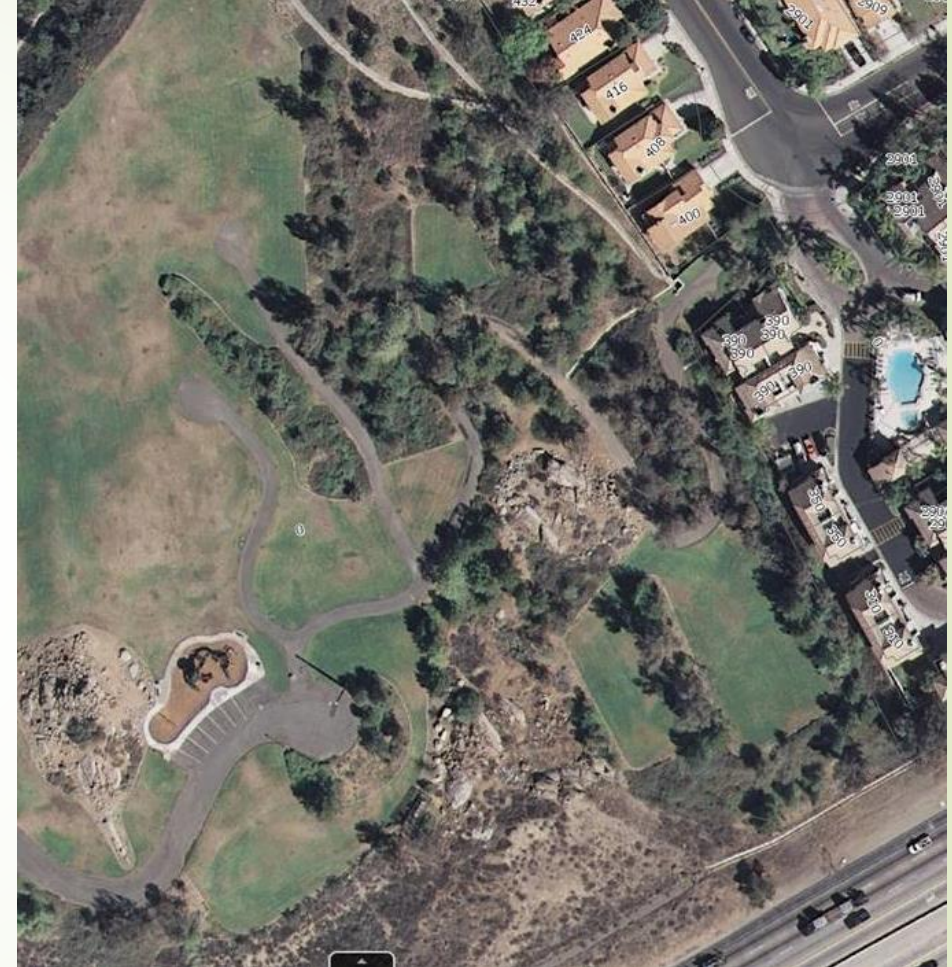
Griffin Park Update

Tom Moody

General Manager

History

- ▶ Park had basic amenities (playground, parking locations and open space)
- ▶ In Fiscal Years 2006-07 and 2007-08, operating costs were \$55,451 and \$48,993. *This is not all inclusive
- ▶ Per June 4, 2008 Budget Workshop meeting minutes, revenue projections were worse than anticipated. As such, a 5% reduction to all general fund departments was proposed in order to present Council with a balanced budget
 - ▶ Presentation included mention of closing Griffin Park
- ▶ Although not specifically mentioned in the Council Agenda, the final Fiscal Year 2008-09 budget was adopted on June 16, 2008, at a regularly scheduled Council meeting
 - ▶ Griffin Park was closed thereafter (specific date unknown)
- ▶ Facility has remained closed since 2008



Current Services

- Regular routine maintenance
 - Mowing and maintenance of the front entry – Mariposa Landscapes, Inc.
 - Trimming of shrubs along Griffin and east slopes – Mariposa Landscapes, Inc.
 - Weed abatement semi-annually on the park interior – L.R. Landscaping
 - Allied Pest Control
- Annual expenses approximately \$11,500 (FY 2017-18)



Actions

- In 2016, in response to residents, the City began developing a plan to re-open the park.
- The initial scope of the project was to meet with residents to determine what use would be of the most interest.
- In April 2016, staff conducted a community meeting as well as distributed a community survey to solicit for desired uses; from that outreach - four main desired uses emerged and conceptual plans were developed.
 - Walking Track – Exercise
 - Nature Walk
 - Hiking
 - Dog Park



Desired Uses

Walking
Track

Hiking

Nature
Preserve
Walk

Dog Park

Actions

- Applied for grant in October 2016
 - Grantor – Habitat Conservation Fund Program
 - Spring 2017 - Received notice grant was not awarded
- Continue to monitor for funding sources that would apply
- Concurrently, based on the desired uses of the residents in the surrounding area, four conceptual plans were developed. Estimates in 2016 ranged from \$1.2M to \$1.7M for the options below:
 - Puppies and Playgrounds
 - Trail Blazers
 - Proving grounds
 - Blended plan



Potential Resources

- Prop 68
- BSA Regional Council
 - Met onsite summer of 2018
 - Continuing Relationship
 - Potential for Eagle Scouts to do projects
 - Would they maintain for certain access and use
- Church Groups
 - Would they maintain for certain access and use
 - Service project locations
 - Helping hands
 - Others
- Would uses like this be acceptable?



Puppies & Playgrounds



Trail Blazer



Proving Grounds



Puppies, Playgrounds & Trails



Re-Opening Challenges

Challenge 1

- Start up costs
 - Grants
 - Matching funds

Challenge 2

- ADA

Challenges 3-5

- Staff
- Services
- Ongoing costs

Funding

- Fund 110 is the general fund for the City and is used in support of all departments
- Fund 217 is a developer impact fund
 - This fund cannot be used to retro-fit existing park amenities; but, can potentially be used to add new amenities
- Resolution 2017-057 outlines the repayment of existing loan going forward
- Determination needed on availability of Fund 217

DEPT REQ	PROJECT NUMBER	PROJECT DESCRIPTION
MS	68690217	CITYWIDE ADA IMPROVEMENTS
MS	68900217	PARKS HARDSCAPE IMPROVEMENTS
MS	68960217	PARKS BASIC AMENITIES
MS	68980217	PARKS ENHANCED AMENITIES
MS	68990217	PARKS LIGHTING IMPROVEMENTS
MS	69010217	PARKS FACILITY IMPROVEMENTS

Cell Tower Revenue at Griffin Park

- Parks 2 contract
 - MonoPole
 - \$2,257.63/month
 - *\$27,091.56 / Annually
- Park 19 contract
 - MonoPine
 - \$2,807.66 / monthly
 - *\$33,691.92 / Annually
- All revenue is part of the general fund

*Annual numbers are estimates only. Numbers are based on current monthly fee. Fees have escalators that hit at various times and are not factored in to estimates above

