



Department of Water & Power Electric Utility

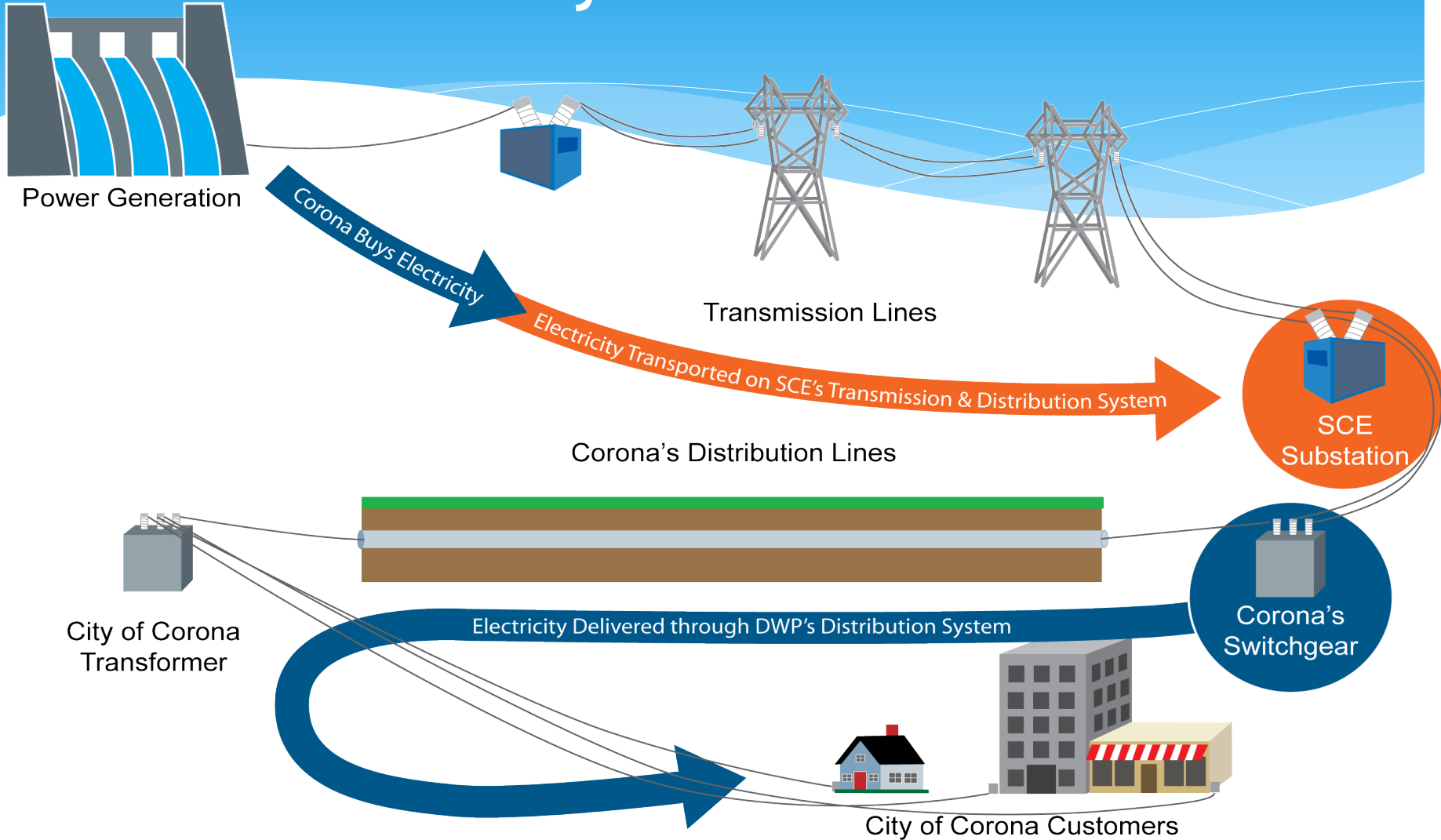
Presented by:
Tom Moody
General Manager

Electric Utility

- Established on April 4, 2001
- Serves approximately 2,800 customers
- 2017 – currently at 29% renewables



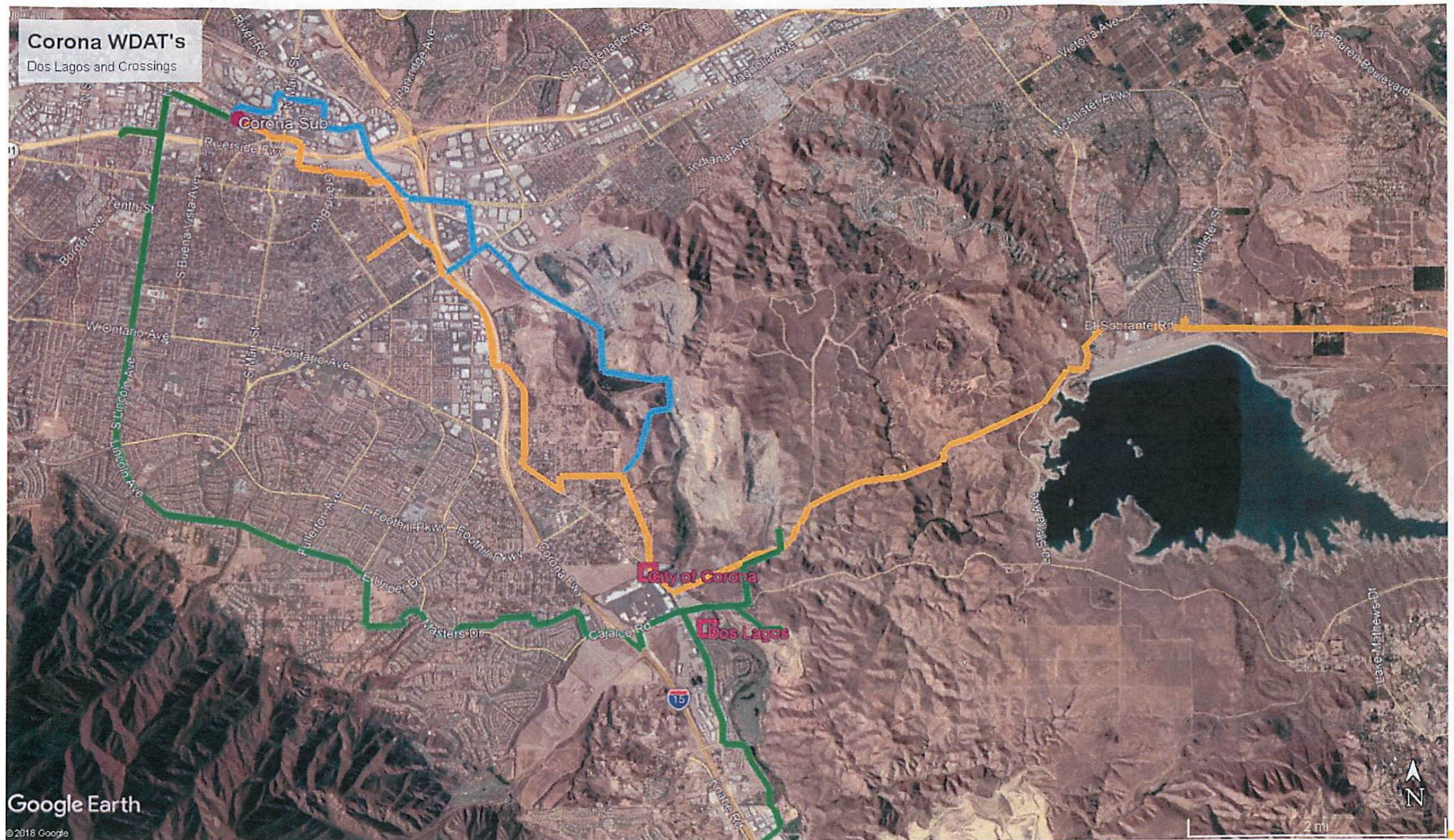
Electric System Overview



Corona's Distribution



Electric Utility SCE To City Distribution Lines



Electric Utility Concerns Identified

- Single Source
- Switches and Reclosers
- RFIs (Remote Fault Indicators)
- Pole Replacements
- Potential Cabling replacements
- Resistance/Excessive Heat Related Concerns
- Communications (SCE \leftrightarrow City)

Current concerns posed to energy provider

- Number of outages
- Duration of outages
- Overall delivery system reliability



Questions ?



Current options and recommendation

- 66 kV substation: \$10 million +, 3-5 years No PSPS concerns
- * 33 kV Option 1: 5 million, 18 months, 5 second switching.
- * **33 kV Option 2: 2.5 million, 18 months, 5 minute switching**



Corona DWP Domestic Rates

Energy Charge \$/kWh/Meter

Tier 1 – Baseline Quantities	0.11808
Tier 2 - 101% to 130% of Baseline	0.13741
Tier 3 – 131% to 200% of Baseline	0.22696
Tier 4 – Over 200% of Baseline	0.32337

Customer Charge - \$/Meter/Day

Single-Family Residence	0.029
-------------------------	-------

<https://www.coronaca.gov/government/departments-divisions/departments-of-water-and-power/residents/electric-services-rates>

Rates

Southern California Edison Rates

