



KEYNOTES - SITE PLAN

1. PROPERTY LINE
2. ACCESSIBLE ROUTE OF TRAVEL SHALL BE A MINIMUM OF 48" WIDE EXCEPT AT DOORS. ROUTE MUST ALWAYS BE STABLE, FIRM AND SLIP RESISTANT SURFACE. IRREGULAR SURFACES SUCH AS COBBLESTONE, BRICK or CONCRETE PAVERS, STAMPED CONCRETE ARE UNACCEPTABLE ON THE ACCESSIBLE ROUTE. SLOPE SHALL NOT EXCEED THE FOLLOWING: SIDEWALK 1:20 (5%), CROSS SLOPE 1:50 (2%), RAMPS 1:12 (8.33%)
3. PARKING STALLS, REFER TO CIVIL DWGS.
4. ACCESSIBLE PARKING STALLS, REFER TO CIVIL DWGS.
5. VAN ACCESSIBLE PARKING STALLS, REFER TO CIVIL DWGS.
6. 'TO-GO' PARKING STALLS
7. 'TO GO' SIGN, SUPPLIED BY LAZY DOG, MOUNTED AND INSTALLED BY G.C., SEE DTL. 4/A1.2
8. ACCESSIBLE PARKING SIGN, REFER TO CIVIL DWGS.
9. NEW CONC. SIDEWALK, MAX. 5% SLOPE W/ MAX. 2% CROSS SLOPE, REFER TO CIVIL DWGS.
10. LANDSCAPE AREA, REFER TO LANDSCAPE DWGS.
11. MENU BOARD SUPPLIED BY LAZY DOG & INSTALLED BY G.C., SEE DTL. 1/A1.2, REFER TO ELEC. DWGS.
12. ADA CURB RAMP, REFER TO CIVIL DWGS.
13. EXISTING LOCAL BUS STOP LOCATION
14. WHEEL STOP, REFER TO CIVIL DWGS.
15. TRANSFORMER, APPROXIMATE LOCATION, REFER TO CIVIL and ELEC. DWGS.
16. GREASE INTERCEPTOR, APPROXIMATE LOCATION, REFER TO PLUMB. DWGS.
17. 12' x 25' LOADING ZONE
18. EXISTING EV PARKING STALLS, REFER TO ELEC. DWGS.
19. BIKE RACK, REFER TO LANDSCAPE DWGS.

SITE PREPARATION NOTES

1. GC TO STRIP and REMOVE ALL VEGETATION, DEBRIS, UNCONTROLLED FILL and LOOSE SOFT, MEDIUM or DISTURBED NATURAL SOILS and OTHER DELETERIOUS MATERIALS PRIOR TO COMMENCING CONSTRUCTION
2. THE CLEARED AREA MUST INCLUDE THE BUILDING AREA, ADJACENT WALKS, SLABS and AREAS TO BE PAVED
3. REFER TO SOIL REPORT FOR EXTENT OF EXCAVATION and PAD PREPARATION
4. GC TO FILL and COMPACT THE SOIL and PREPARE THE PAD FOR CONSTRUCTION ACCORDINGLY W/ CIVIL DRAWINGS and SOIL REPORT

GENERAL SITE PLAN NOTES

1. CONTRACTOR TO VERIFY ALL EXISTING FIELD CONDITIONS and REPORT ANY DISCREPANCIES TO THE ARCHITECT PRIOR TO COMMENCING WORK.
2. PARKING DIMENSIONS ARE PROVIDED FOR REFERENCE ONLY. THE LAZY DOG and THEIR GENERAL CONTRACTOR ARE IN NO WAY RESPONSIBLE FOR THE ACCURACY OF THESE DIMENSIONS.
3. ALL PARKING and EXTERIOR LANDSCAPE AREAS, INCLUDING ACCESSIBLE PARKING STALLS and PATHS ARE BY THE LANDLORD.

LEGEND

- ACCESSIBLE PATH OF TRAVEL
- - - - - PROPERTY LINE
- PROJECT SCOPE
- EXISTING ADJACENT BUILDING, NOT IN SCOPE

Architect

**JGA**  
JAMES GARTNER & ASSOCIATES,  
ARCHITECTS, INC.

ARCHITECTURE  
PLANNING / INTERIORS  
PROJECT MANAGEMENT

2036 North Broadway  
Santa Ana, CA 92706  
Phone: 714.560.9210  
www.jgartner.com

EXCEPT WHERE SHOWN OR SHOWN BY THE PROPERTY OF THE ARCHITECT, NO PART THEREOF SHALL BE REPRODUCED, COPIED, ADAPTED, EITHER WHOLLY OR PARTIALLY, OR USED WITHOUT FIRST WRITTEN CONSENT OF THE ARCHITECT. THE ARCHITECT'S LIABILITY IS LIMITED TO THE DESIGN AND CONSTRUCTION OF THE PROJECT. THE ARCHITECT SHALL NOT BE RESPONSIBLE FOR THE ACCURACY OF THE INFORMATION PROVIDED BY THE CLIENT OR ANY OTHER SOURCE. THE ARCHITECT SHALL NOT BE RESPONSIBLE FOR THE ACCURACY OF THE INFORMATION PROVIDED BY THE CLIENT OR ANY OTHER SOURCE.

Stamp and Signature

| Issuance    | Description          |
|-------------|----------------------|
| 15 FEB 2019 | PLAN CHECK SUBMITTAL |
| 20 FEB 2019 | ISSUED FOR BID       |

| Revision | No. | Description |
|----------|-----|-------------|
|          | 1   |             |
|          | 2   |             |
|          | 3   |             |
|          | 4   |             |
|          | 5   |             |
|          | 6   |             |
|          | 7   |             |
|          | 8   |             |
|          | 9   |             |
|          | 10  |             |
|          | 11  |             |
|          | 12  |             |
|          | 13  |             |
|          | 14  |             |
|          | 15  |             |
|          | 16  |             |
|          | 17  |             |
|          | 18  |             |
|          | 19  |             |
|          | 20  |             |
|          | 21  |             |
|          | 22  |             |
|          | 23  |             |
|          | 24  |             |
|          | 25  |             |
|          | 26  |             |
|          | 27  |             |
|          | 28  |             |
|          | 29  |             |
|          | 30  |             |
|          | 31  |             |
|          | 32  |             |
|          | 33  |             |
|          | 34  |             |
|          | 35  |             |
|          | 36  |             |
|          | 37  |             |
|          | 38  |             |
|          | 39  |             |
|          | 40  |             |
|          | 41  |             |
|          | 42  |             |
|          | 43  |             |
|          | 44  |             |
|          | 45  |             |
|          | 46  |             |
|          | 47  |             |
|          | 48  |             |
|          | 49  |             |
|          | 50  |             |
|          | 51  |             |
|          | 52  |             |
|          | 53  |             |
|          | 54  |             |
|          | 55  |             |
|          | 56  |             |
|          | 57  |             |
|          | 58  |             |
|          | 59  |             |
|          | 60  |             |
|          | 61  |             |
|          | 62  |             |
|          | 63  |             |
|          | 64  |             |
|          | 65  |             |
|          | 66  |             |
|          | 67  |             |
|          | 68  |             |
|          | 69  |             |
|          | 70  |             |
|          | 71  |             |
|          | 72  |             |
|          | 73  |             |
|          | 74  |             |
|          | 75  |             |
|          | 76  |             |
|          | 77  |             |
|          | 78  |             |
|          | 79  |             |
|          | 80  |             |
|          | 81  |             |
|          | 82  |             |
|          | 83  |             |
|          | 84  |             |
|          | 85  |             |
|          | 86  |             |
|          | 87  |             |
|          | 88  |             |
|          | 89  |             |
|          | 90  |             |
|          | 91  |             |
|          | 92  |             |
|          | 93  |             |
|          | 94  |             |
|          | 95  |             |
|          | 96  |             |
|          | 97  |             |
|          | 98  |             |
|          | 99  |             |
|          | 100 |             |

Project Name and Location

**Lazy Dog**  
CORONA HILLS PLAZA  
380 N. MCKINLEY STREET  
CORONA, CA 92879

Sheet Title

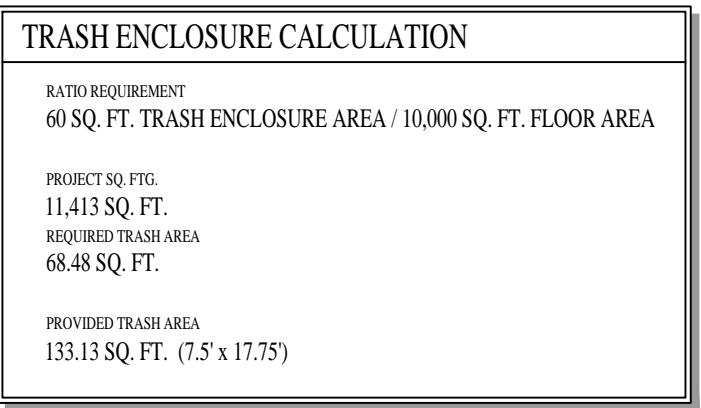
OVERALL SITE PLAN  
KEYNOTES  
SITE PLAN NOTES  
LEGEND

Project No.: ..

Sheet No.: **A1.0**

Print Date: 13 March 2019





ENLARGED SITE PLAN

SCALE  
1/16" = 1'-0"

1

← - - - - - ACCESSIBLE PATH OF TRAVEL.

— | — | — PROPERTY LINE

▭ PROJECT SCOPE

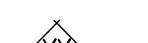

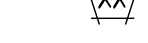




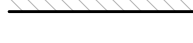
▭ EXISTING ADJACENT BUILDING, NOT IN SCOPE

Print Date: 13 March 2019

## A1.1





- |   |  |
|---|--|
|  | NEW WALLS, REFER TO VTS-3 FOR PARTITION TYPE DETAILS |
|  | DOOR NUMBER, REFER TO SHEET A7.0 FOR DOOR SCHEDULE.  |
|  | NEW WINDOWS, REFER TO SHEET A7.1 FOR WINDOW TYPES    |
|  | RAILING ELEVATION, REFER TO DETAIL 1/A&6             |
|  | AREA WITH EQUIPMENT PLATFORM ABOVE, SEE 1/A2.3       |
|  | NEW WOOD FRAMED WALL                                 |
|  | NEW METAL FRAMED WALL                                |
|  | NEW CHU WALL   |

## EXHIBIT C



FINISH SCHEDULE

- ST-1

STONE VENEER LAZY DOG CUSTOM BLEND
- ST-3A

STONE COLUMN CAPS LAZY DOG CUSTOM BLEND
- ST-3B

STONE SILLS LAZY DOG CUSTOM BLEND
- MTL-5

BERRIDGE STANDING SEAM METAL ROOF 'CEE-LOCK' 24 GAUGE SMOOTH, OR APPROVED EQUAL, COLOR: DEEP RED. PAINT METAL FLASHING/ METAL GUTTER/ DOWNSPOUT TO MATCH 'DEEP RED' COLOR
- MTL-6

US ALUMINUM STOREFRONT WINDOWS, OR APPROVED EQUAL, COLOR: DEEP RED
- ND-1

EXTERIOR WOOD TIMBERS, OLYMPIC ELITE WOODLAND OIL, SATIN 'MOUNTAIN CEDAR'
- ND-2

EXTERIOR WOOD CASING AT DOORS, WINDOWS AND NICHES
- ND-3

EXTERIOR 2x12 DOUGLAS FIR WOOD SIDING. BEAR PREMIUM WEATHER PROOFING ALL-IN-ONE TRANSPARENT, SATIN, 'CORDOVAN BROWN' T-104
- ND-5

EXTERIOR WOOD FASCIA, OLYMPIC ELITE WOODLAND OIL, SATIN, 'MOUNTAIN CEDAR'
- ND-6

EXTERIOR GLU-LAM FASCIA: OLYMPIC ELITE WOODLAND OIL, SATIN, 'MOUNTAIN CEDAR'

PT-8B

DUNN EDWARDS PAINT, SATIN FINISH. COLOR: DE 187 BLACK

PT-9

SHERWIN WILLIAMS PAINT, FLAT FINISH. COLOR: SW-7580 CARNELIAN

PT-10

BENJAMIN MOORE PAINT, FLAT FINISH. COLOR: HC-87 ASHLEY GRAY

PT-15

BENJAMIN MOORE PAINT, FLAT FINISH. COLOR: 999 RUSTIC TAUPÉ

PT-16

BENJAMIN MOORE PAINT, FLAT FINISH. COLOR: 1652 NAVY MASTERPIECE

PT-17

BENJAMIN MOORE PAINT, FLAT FINISH. COLOR: HC-75 MARTVILLE BROWN

GENERAL ELEVATION NOTES

1.

A SEPARATE SIGN PERMIT IS REQUIRED FOR ALL EXTERIOR SIGNS INCLUDING AWNING SIGNS. SIGNS ARE EXCLUDED FROM THE BUILDING PERMIT.

KEYNOTES - EXTERIOR ELEVATION

- 1

3/4" THICK 3-COAT PORTLAND CEMENT PLASTER (STUCCO) O/ METAL LATH. LIGHT SAND TEXTURE, SEE DTL. 1 and 23/AB.0
2.

STUCCO CONTROL JOINT #XJ-15 CLARK DIETRICH BUILDING SYSTEM or EQUAL, SEE DTL. 22/AB.0
3.

STONE VENEER CLADDING, RUN HORIZONTALLY. GROUT COLOR PER 10' DWG5. SEE DTL5. 2 or 3/AB.0
4.

NOT USED
5.

WOOD SIDING, SEE DTL. 4/AB.0
6.

WOOD DOOR BY MILLWORK CONTRACTOR, PER DOOR SCHEDULE A7.0
7.

DOOR PER DOOR SCHEDULE A7.0
8.

WEATHER RESISTANT PUSH PLATE DOOR SWITCH, "PUSH TO OPEN". MOUNT at 36" A.F.F
9.

TRASH GATE, PER DOOR SCHEDULE A7.0
10.

ALUMINUM STOREFRONT, PER STOREFRONT SCHEDULE A7.1
11.

WOOD TRIM at STOREFRONT WINDOWS, SEE DTL5. 31 or 37/A7.1
12.

GLU-LAM BEAM at STOREFRONT WINDOWS, SEE DTL5. 25 or 37/A7.1
13.

WOOD PILASTER, SEE DTL. 35/A7.1

14.

DECORATIVE GLU-LAM COLUMN STRADDLING STRUCTURAL COLUMNS, REFER TO STRUCT. DWGS. SEE DTL5. 29 or 29/A7.1

15.

STRUCTURE COLUMN, REFER TO STRUCT. DWGS.

16.

WOOD KICKER and OUTRIGGER, REFER TO STRUCT. DWGS., SEE DTL5. 16 or 25/AB.3

17.

WOOD KICKERS, SEE DTL. 1/AB.1

18.

STANDING SEAM METAL ROOF

19.

STUCCO CORNICE w/ MTL COPING, SEE DTL. 3/AB.0

20.

METAL COPING at PARAPET, SEE DTL5. 31, 33 or 35/AB.0

21.

SHEET METAL FLASHING, PAINTED TO MATCH ADJACENT MATERIAL

22.

RESLET FLASHING, PAINTED TO MATCH ADJACENT MATERIAL, SEE DTL. 17/AB.2

23.

ROOF EAVE, SEE DTL. 6 or 12/AB.1

24.

ROOF EAVE at SERVICE YARD, SEE DTL. 19, 23 or 35/AB.1

25.

STONE SILL, SEE DTL5. 15 or 15/AB.0

26.

BUILD-IN STONE BENCH, SEE DTL. 1/A7.2

27.

STEEL AWNING and RODS, SEE DTL. 32/AB.1

28.

METAL RAILING, SEE DTL. 1/AB.6

29.

NON-LATCHING METAL PATIO GATE WITH PAN PATTERN and WIRE MESH. SUPPLIED and INSTALLED BY G.C., SEE DTL. 1/AB.6

30.

2" THICK STONE CAP, SEE DTL. 16/AB.6

31.

CONCRETE BASE WITH STONE VENEER CLADDING, SEE DTL. 16/AB.6

32.

ROLL-UP CURTAIN and RAIL COVERS PER LAZY DOG VENDOR. REFER TO MANUFACTURER'S SHOP DRAWINGS, SEE DTL. 19/AB.6

33.

PATIO ROOF BEAM, REFER TO STRUCT. DWGS., SEE DTL. 19, 31 and 34/AB.6

34.

DOUBLE STEEL BRACES, REFER TO STRUCT. DWGS., SEE DTL. 19/AB.6

35.

METAL GUTTER and DOWNSPOUT BY G.C., SIZE PER PLUMB. DWGS. SEE DTL. 1/AB.1

36.

METAL GUTTER and DOWNSPOUT BY G.C., SIZE PER PLUMB. DWGS. SEE DTL. 19/AB.6

37.

LOUVERS, CSI MODEL 2252, CONTACT: 408.272.5200, www.c-sigroup.com. SEE DTL. 19 or 23/AB.1

38.

ROOFLINE BEYOND

39.

POTTED PLANT BY OWNER

40.

LIGHT FIXTURE PER ELEC. DWGS.

41.

ILLUMINATED SIGNS BY OWNER. G.C. TO PROVIDE ELEC. POWER and WALL BACKING. SEPARATE PERMIT REQUIRED (NOT PART OF THIS PERMIT). ALL SIGNAGE IS ALSO COORDINATED UNDER SEPARATE SIGN DWGS.
42.

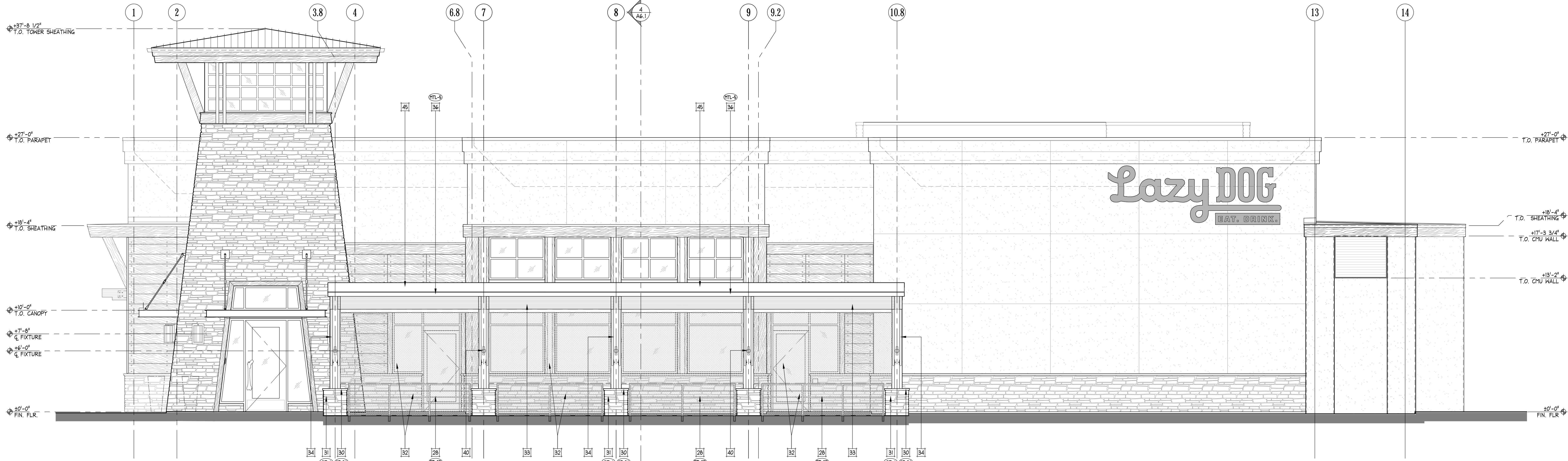
INTERNALLY ILLUMINATED STREET ADDRESS NUMBER BY OWNER. ON LIGHTING CIRCUIT POWERED FROM DUSK TO DAWN and OF CONTRASTING COLOR TO BACKGROUND. HEIGHT OF NUMBERS TO BE 12 INCHES MIN. G.C. TO INSTALL PER FIRE DEPARTMENT GUIDELINE. SEPARATE PERMIT REQUIRED (NOT PART OF THIS PERMIT)
43.

KNOX VAULT, 4400 SERIES - BLACK, RECESSED MOUNTED WITH HINGED DOOR. MOUNT at +8'-0" A.F.F. TO CENTER OF VAULT. A KEY TO THE FIRE CONTROL ROOM SHALL BE LOCATED WITHIN AN APPROVED FIRE DEPARTMENT KNOX COMPANY MODEL NO. 4400 or LARGER. KEY BOX LOCATED ADJACENT TO THE ACCESS DOOR ON THE EXTERIOR OF THE BUILDING. CONTACT THE KNOX COMPANY DIRECTLY at (866) 629-6662 FOR CUSTOMER SERVICE and COST
44.

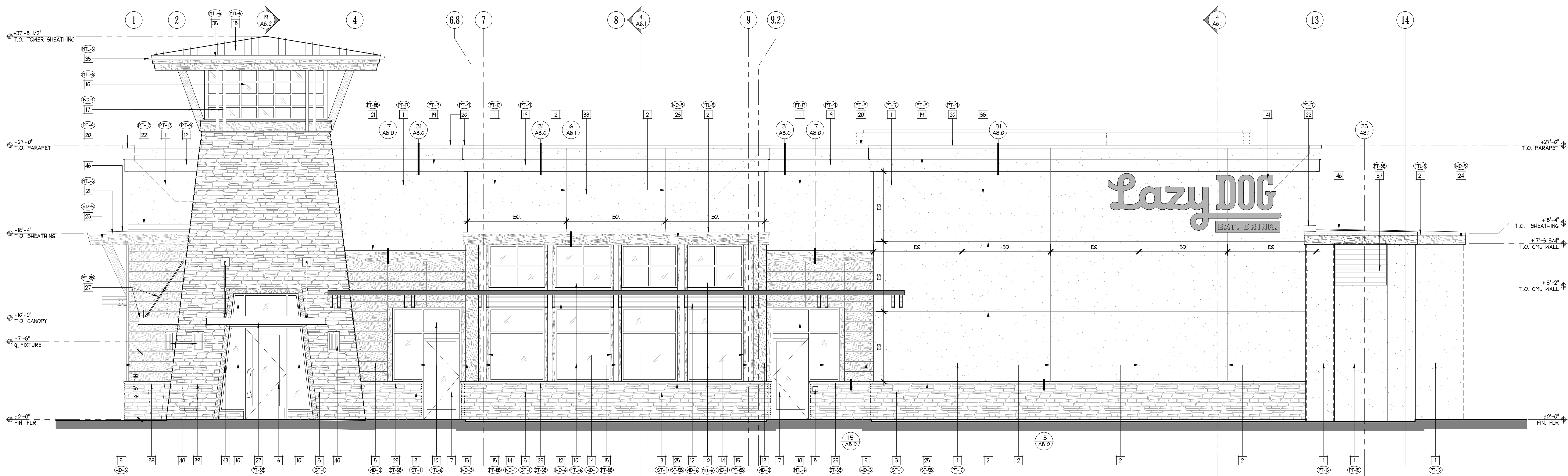
KNOX VAULT, 4400 SERIES - BLACK, SURFACE MOUNTED WITH HINGED DOOR. MOUNT at +8'-0" A.F.F. TO CENTER OF VAULT. A KEY TO THE FIRE CONTROL ROOM SHALL BE LOCATED WITHIN AN APPROVED FIRE DEPARTMENT KNOX COMPANY MODEL NO. 4400 or LARGER. KEY BOX LOCATED ADJACENT TO THE ACCESS DOOR ON THE EXTERIOR OF THE BUILDING. CONTACT THE KNOX COMPANY DIRECTLY at (866) 629-6662 FOR CUSTOMER SERVICE and COST
45.

CARLISE SURE WELD, 60 MIL TPO CLASS 'A' ROOFING O/ ROOF SHEATHING, REFER TO STRUCT. DWGS., SLOPE 1/2" PER FOOT MIN. TAN TYP. INSTALL PER MANUFACTURER'S INSTRUCTIONS
46.

CARLISE SURE WELD, 60 MIL TPO CLASS 'A' ROOFING O/ PROTECTION BOARD O/ TAPERED RIGID INSULATION O/ ROOF SHEATHING, REFER TO STRUCT. DWGS., SLOPE 1/4" PER FOOT MIN. WHITE TYP. INSTALL PER MANUFACTURER'S INSTRUCTIONS



WEST PATIO ELEVATION SCALE 1/4" = 1'-0" 3



WEST ELEVATION SCALE 1/4" = 1'-0" 1

Architect

JGA

JAMES GARTNER & ASSOCIATES, ARCHITECTS, INC.

ARCHITECTURE PLANNING / INTERIORS PROJECT MANAGEMENT

2036 North Broadway  
Santa Ana, CA 92706  
Phone: 714.560.9210  
www.jgartner.com

DESIGNED THESE ARE AND SHALL REMAIN THE PROPERTY OF THE ARCHITECT. NO PART THEREOF SHALL BE REPRODUCED, COPIED, ADAPTED, MODIFIED, REVERSE ENGINEERED OR USED WITHOUT PRIOR WRITTEN CONSENT OF AND APPROPRIATE COMPENSATION TO THE ARCHITECT. YOUR CONSENT WITH THE ABOVE PARAGRAPH OR SPECIFICATIONS SHALL CONSTITUTE CONCLUSIVE EVIDENCE OF ACCEPTANCE OF THESE INSTRUCTIONS.

Stamp and Signature

REGISTERED ARCHITECT  
JAMES G. GARTNER  
STATE OF CALIFORNIA  
No. C-17489  
EXPIRY: 11-30-19

*James G. Gartner*

Issuance Date Description

15 FEB 2019

PLAN CHECK SUBMITTAL

☒ PLAN CHECK SUBMITTAL

20 FEB 2019

ISSUED FOR BID

☒ ISSUED FOR CONSTRUCTION

Revision Date No. Description

1

1

2

1

3

1

4

1

5

1

6

1

7

1

8

1

9

1

10

1

11

1

12

1

13

1

14

1

15

1

16

1

17

1

18

1

19

1

20

1

21

1

22

1

23

1

24

1

25

1

26

1

27

1

28

1

29

1

30

1

31

1

32

1

33

1

34

1

35

1

36

1

37

1

38

1

39

1

40

1

41

1

42

1

43

1

44

1

45

1

46

1

47

1

48

1

49

1

50

1

51

1

52

1

53

1

54

1

55

1

56

1

57

1

58

1

59

1

60

1

61

1

62

1

63

1

64

1

65

1

66

1

67

1

68

1

69

1

70

1

71

1

72

1

73

1

74

1

75

1

76

1

77

1

78

1

79

1

80

1

81

1

82

1

83

1

84

1

85

1

86

1

87

1

88

1

89

1

90

1

91

1

92

1

93

1

94

1

95

1

96

1

97

1

98

1

99

1

100

1

101

1

102

1

103

1

104

1

105

1

106

1

107

1

108

1

109

1

110

1

111

1

112

1

113

1

114

1

115

1

116

1

117

1

118

1

119

1

120

1

121

1

122

1

123

1

124

1

125

1

126

1

127

1

128

1

129

1

130

1

131

1

132

1

133

1

134

1

135

1

136

1

137

1

138

1

139

1

140

1

141

1

142

1

143

1

144

1

145

1

146

1

147

1

148

1

149

1

150

1

151

1

152

1

153

1

154

1

155

1

156

1

157

1

158

1

159

1

160

1

161

1

162

1

163

1

164

1

165

1

166

1

167

1

168

1

169

1

170

1

171

1

172

1

173

1

174

1

175

1

176

1

177

1

178

1

179

1

180

1

181

1

182

1

183

1

184

1

185

1

186

1

187

1

188

1

189

1

190

1

191

1

192

1

193

1

194

1

195

1

196

1

197

1

198

1

199

1

200

1

201

1

202

1

203

1

204

1

205

1

206

1

207

1

208

1

209

1

210

1

211

1

212

1

213

1

214

1

215

1

216

1

217

1

218

1

219

1

220

1

221

1

222

1

223

1

224

1

225

1

226

1

227

1

228

1

229

1

230

1

231

1

232

1

233

1

234

1

235

1

236

1

237

1

238

1

239

1

240

1

241

1

242

1

243

1

244

1

245

1

246

1

247

1

248

1

249

1

250

1

251

1

252

1

253

1

254

1

255

1

256

1

257

1

258

1

259

1

260

1

261

1

262

1

263

1

264

1

265

1

266

1

267

1

268

1

269

1

270

1

271

1

272

1

273

1

274

1

275

1

276

1

277

1

278

1

279

1

280

1

281

1

282

1

283

1

284

1

285

1

286

1

287

1

288

1

289

1

290

1

291

1

292

1

293

1

294

1

295

1

296

1

297

1

298

1

299

1

300

1

301

1

302

1

303

1

304

1

305

1

306

1

307

1

308

1

309

1

310

1

311

1

312

1

313

1

314

1

315

1

316

1

317

1

318

1

319

1

320

1

321

1

322

1

323

1

324

1

325

1

326

1

327

1

328

1

329

1

330

1

331

1

332

1

333

1

334

1

335

1

336

1

337

1

338

1

339

1

340

1

341

1

342

1

343

1

344

1

345

1

346

1

347

1

348

1

349

1

350

1

351

1

352

1

353

1

354

1

355

1

356

1

357

1

358

1

359

1

360

1

361

1

362

1

363

1

364

1

365

1

366

1

367

1

368

1

369

1

370

1

371

1

372

1

373

1

374

1

375

1

376

1

377

1

378

1

379

1

380

1

381

1

382

1

383

1

384

1

385

1

386

1

387

1







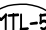



388

1

<



## FINISH SCHEDULE

|   |  |
|---|--|
|    | STONE VENEER LAYZ DQ CUSTOM BLEND  |
|    | STONE COLUMNS CAPS LAYZ DQ CUSTOM BLEND  |
|   | STONE SILLS LAYZ DQ CUSTOM BLEND   |
|  | BERRIDGE STANDING SEAM METAL ROOF "ICE-LOCK" 24 GAUGE SMOOTH, OR APPROVED EQUAL, COLOR: DEEP RED, SATIN METAL FLASHING/ METAL RUTTER: DOWNSTAP TO MATCH RED, COLOR: DEEP RED |
|  | US ALUMINUM STOREFRONT WINDOWS, OR APPROVED EQUAL, COLOR: DEEP RED   |
|  | EXTERIOR WOOD TIMBERS, OLYMPIC ELITE WOODLAND OIL, SATIN 'MOUNTAIN CEDAR'  |
|  | EXTERIOR WOOD CASING AT DOORS, WINDOWS AND NICHES  |
|  | EXTERIOR 2X2 DOUGLAS FIR WOOD SIDING, BEAR PREMIUM WEATHER PROOFING AND/ OR TRANSPARENT SATIN 'CORVADO' WOOD FINISH  |
|  | EXTERIOR WOOD FASCIA: OLYMPIC ELITE WOODLAND OIL, SATIN, 'MOUNTAIN CEDAR'  |
|  | EXTERIOR GULF-LAM FASCIA: OLYMPIC ELITE WOODLAND OIL, SATIN, 'MOUNTAIN CEDAR'  |

|       |  |
|-------|--|
| PT-8B | DUNN EDWARDS PAINT, SATIN FINISH. COLOR: DE 187 BLACK            |
| PT-9  | SHERWIN WILLIAMS PAINT, FLAT FINISH. COLOR: SW-7580 CARMELIAN    |
| PT-10 | BENJAMIN MOORE PAINT, FLAT FINISH. COLOR: HC-87 ASHLEY GRAY      |
| PT-6  | BENJAMIN MOORE PAINT, FLAT FINISH. COLOR: 999 RUSTIC TAUPE       |
| PT-16 | BENJAMIN MOORE PAINT, FLAT FINISH. COLOR: 1652 NAVY MASTERPIECE  |
| PT-11 | BENJAMIN MOORE PAINT, FLAT FINISH. COLOR: HC-75 MARTYVILLE BROWN |

## GENERAL ELEVATION NOTES

1. A SEPARATE SIGN PERMIT IS REQUIRED FOR ALL EXTERIOR SIGNS INCLUDING AWNING SIGNS. SIGNS ARE EXCLUDED FROM THE BUILDING PERMIT.

## KEYNOTES - EXTERIOR ELEVATION

- |    |   |    |   |    |   |
|----|---|----|---|----|---|
| 1  | W/ THICK 3-COAT PORTLAND CEMENT PLASTER (STUCCO) OF METAL LATH. LIGHT SAND TEXTURE. SEE DTL. 1 and 23/A/8.0 | 14 | DEGRADATIVE GLU-LAM COLUMN STRADDLING STRUCTURAL COLUMNS, REFER TO STRUCT. DWGS. SEE DTLs. 23 or 29/A/1 | 28 | METAL RAILING, SEE DTL. 1/A/8.0                             |
| 2  | STUCCO CONTROL JOINT #XJ-15 CLARK DIETRICH BUILDING SYSTEM or EQUAL, SEE DTL. 22/A/8.0                      | 15 | STRUCTURE COLUMN, REFER TO STRUCT. DWGS.  | 29 | NON-LATHING METAL PATIO G/ SUPPLIED AND INSTALLED BY G.C.O. |
| 3  | STONE VENEER CLADDING, RUN HORIZONTALLY. GROUT COLOR PER '1D' DWGS. SEE DTLs. 2 or 3/A/8.0                  | 16 | WOOD KICKER AND OUTRIGGER, REFER TO STRUCT. DWGS., SEE DTLs. 16 or 25/A/6.3                             | 30 | 2" THICK STONE CAP, SEE DTL.                                |
| 4  | NOT USED  | 17 | WOOD KICKERS, SEE DTL. 1/A/8.1  | 31 | CONCRETE BASE WITH STONE VENEER                             |
| 5  | WOOD SIDING, SEE DTL. 4/A/8.0   | 18 | STANDING SEAM METAL ROOF  | 32 | ROLL-UP CURTAIN AND RAIL COVER MANUFACTURER'S SHOP DRAWING  |
| 6  | WOOD DOOR BY MILLHORN CONTRACTOR, PER DOOR SCHEDULE A/7.0   | 19 | STUCCO CORNICE W/ MTL. COPING, SEE DTL. 31/A/8.0  | 33 | PATIO ROOF BEAM, REFER TO S/                                |
| 7  | DOOR PER DOOR SCHEDULE A/7.0  | 20 | METAL COPING AT PARAPET, SEE DTLs. 31, 33 or 35/A/8.0   | 34 | DOUBLE STEEL BRACES, REFER TO S/                            |
| 8  | WEATHER RESISTANT PUSH PLATE DOOR SWITCH, "PUSH TO OPEN". MOUNT AT 36" A.F.F.                               | 21 | SHEET METAL FLASHING, PAINTED TO MATCH ADJACENT MATERIAL  | 35 | METAL GUTTER AND DOWNSPOUT 1/A/8.1                          |
| 9  | TRASH GATE, PER DOOR SCHEDULE A/7.0   | 22 | REGLET FLASHING, PAINTED TO MATCH ADJACENT MATERIAL, SEE DTL. 17/A/8.2                                  | 36 | METAL GUTTER AND DOWNSPOUT 19/A/8.6                         |
| 10 | ALUMINUM STOREFRONT, PER STOREFRONT SCHEDULE A/7.1  | 23 | ROOF EAVE, SEE DTL. 6 or 12/A/8.1   | 37 | LOUVERS, C/1 QUITTER MODEL 2252, CONT. DTL. 19 or 23/A/8.1  |
| 11 | WOOD TRIM AT STOREFRONT WINDOWS, SEE DTLs. 31 or 37/A/7.1   | 24 | ROOF EAVE AT SERVICE YARD, SEE DTL. 19, 23 or 35/A/8.1  | 38 | ROOFLINE BEYOND   |
| 12 | GLU-LAM BEAM AT STOREFRONT WINDOWS, SEE DTLs. 25 or 37/A/7.1  | 25 | STONE SILL, SEE DTLs. 13 or 15/A/8.0  | 39 | POTTED PLANT BY OWNER                                       |
| 13 | WOOD PILASTER, SEE DTL. 35/A/7.1  | 26 | BUILD-IN STONE BENCH, SEE DTL. 1/A/7.2  | 40 | LIGHT FIXTURES PER ELEC. DWGS.                              |
|    |   | 27 | STEEL ANNING AND ROOF, SEE DTL. 32/A/8.1  |    |   |

- WITH PAIN PATTERN AND KIRE MESH. SEE DTL. 19/A/6.6
- 6.6
- CLADDING, SEE DTL. 16/A/6.6
- PER LAZY DOG VENDOR. REFER TO SEE DTL. 19/A/6.6
- DTL. DWGS., SEE DTL. 19. 31 and 34/A/6.6
- STRUCT. DWGS. SEE DTL. 19/A/6.6
- 6.6, SIZE PER PLUMB. DWGS. SEE DTL. 19/A/6.6
- G.C., SIZE PER PLUMB. DWGS. SEE DTL. 19/A/6.6
- 908.275.0200, [www.c-sgroup.com](http://www.c-sgroup.com). SEE
41. ILLUMINATED SIGNS BY OWNER. G.C. TO PROVIDE ELEC. POWER AND WALL BACKING. SEPARATE PERMIT REQUIRED (NOT PART OF THIS PERMIT). ALL SIGNAGE IS ALSO COORDINATED UNDER SEPARATE SIGN DWGS.
42. INTERNALLY ILLUMINATED STREET ADDRESS NUMBER BY OWNER. ON LIGHTING CIRCUIT POWERED FROM DUSK TO DAWN AND OF CONTRASTING COLOR TO BACKGROUND. HEIGHT OF NUMBERS TO BE 12 INCHES MIN. G.C. TO INSTALL PER FIRE DEPARTMENT GUIDELINE. SEPARATE PERMIT REQUIRED (NOT PART OF THIS PERMIT)
43. KNOX VAULT, 4400 SERIES - BLACK, RECESSED MOUNTED WITH HINGED DOOR. MOUNT  $\pm$  +5'-0" A.F.F. TO CENTER OF VAULT. A KEY TO THE FIRE CONTROL ROOM SHALL BE LOCATED WITHIN AN APPROVED FIRE DEPARTMENT KNOX COMPANY MODEL NO. 4400 or LARGER. KEY BOX LOCATED ADJACENT TO THE ACCESS DOOR ON THE EXTERIOR OF THE BUILDING. CONTACT THE KNOX COMPANY DIRECTLY AT (866) 620-6662 FOR CUSTOMER SERVICE AND COST
44. KNOX VAULT, 4400 SERIES - BLACK, SURFACE MOUNTED WITH HINGED DOOR. MOUNT  $\pm$  +5'-0" A.F.F. TO CENTER OF VAULT. A KEY TO THE FIRE CONTROL ROOM SHALL BE LOCATED WITHIN AN APPROVED FIRE DEPARTMENT KNOX COMPANY MODEL NO. 4400 or LARGER. KEY BOX LOCATED ADJACENT TO THE ACCESS DOOR ON THE EXTERIOR OF THE BUILDING. CONTACT THE KNOX COMPANY DIRECTLY AT (866) 620-6662 FOR CUSTOMER SERVICE AND COST
45. CARLISLE SURE WELD, 60 MIL TPO CLASS 'A' ROOFING OR ROOF SHEATHING, REFER TO STRUCT. DWGS, SLOPE 1/4" PER FOOT MIN., TAN TYP. INSTALL PER MANUFACTURER'S INSTRUCTIONS
46. CARLISLE SURE WELD, 60 MIL TPO CLASS 'A' ROOFING OR PROTECTION BOARD OR TAPERED RIGID INSULATION OR ROOF SHEATHING, REFER TO STRUCT. DWGS, SLOPE 1/4" PER FOOT MIN., WHITE TYP. INSTALL PER MANUFACTURER'S INSTRUCTIONS

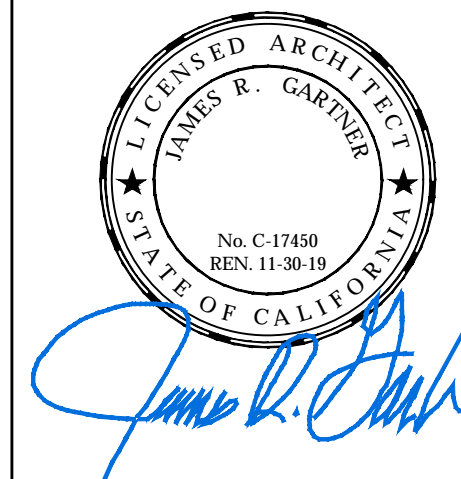
Architect

**JGA**  
JAMES GARTNER & ASSOCIATES,  
ARCHITECTS, INC.  
ARCHITECTURE  
PLANNING / INTERIORS  
PROJECT MANAGEMENT

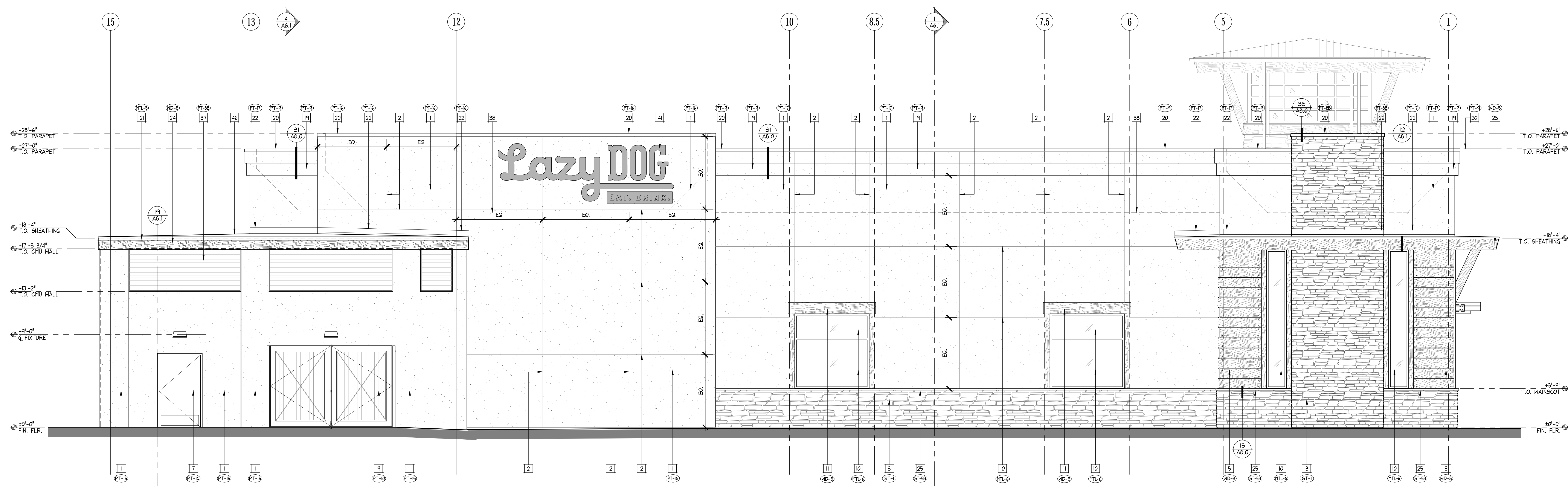
2036 North Broadway  
Santa Ana, CA 92706  
Phone 714.560.9210  
[www.jgartner.com](http://www.jgartner.com)

DRAWINGS, SPECIFICATIONS, IDEAS, DESIGNS, AND ARRANGEMENTS REPRESENTED HEREIN ARE AND SHALL REMAIN THE PROPERTY OF THE ARCHITECT. NO PART THEREOF SHALL BE REPRODUCED, COPIED, ADAPTED, DISCLOSED, DISTRIBUTED, SOLD, PUBLISHED OR USED WITHOUT PRIOR WRITTEN CONSENT OF AND APPROPRIATE COMPENSATION TO THE ARCHITECT. VISUAL CONTACT WITH THE ABOVE DRAWINGS OR SPECIFICATIONS SHALL CONSTITUTE CONCLUSIVE EVIDENCE OF ACCEPTANCE OF THESE EXHIBITIONS.

Stamp and Signature



| Issuance    |                                     | Description             |
|-------------|-------------------------------------|-------------------------|
| Date        |                                     |                         |
| 15 FEB 2019 | <input checked="" type="checkbox"/> | PLAN CHECK SUBMITTAL    |
|             | <input type="checkbox"/>            | PLAN CHECK RESUBMITAL   |
| 20 FEB 2019 | <input checked="" type="checkbox"/> | ISSUED FOR BID          |
|             | <input type="checkbox"/>            | ISSUED FOR CONSTRUCTION |
|             | <input type="checkbox"/>            |                         |

[illegible]

Project Name and Location

**Lazy Dog**  
EAT. DRINK.

Sheet Title

EXTERIOR ELEVATIONS  
KEYNOTES  
NOTES  
FINISH SCHEDULE

Project No. \_\_\_\_\_

Sheet No.:

## A5.2

Print Date: 13 March 2019

EAST LEVATION

SCALE  
1/4" = 1'-0"

 $1/4'' = 1'-0''$