



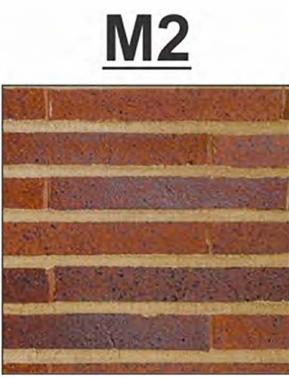
1 | SOUTH ELEVATION
1/4"= 1'-0"



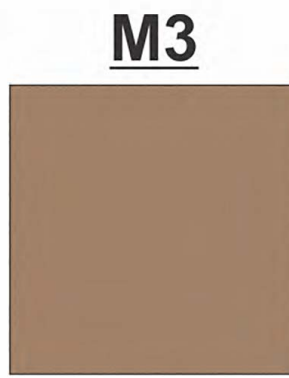
2 | WEST ELEVATION
1/4"= 1'-0"



RECLAIMED METAL
PANEL: CAR HOOD.



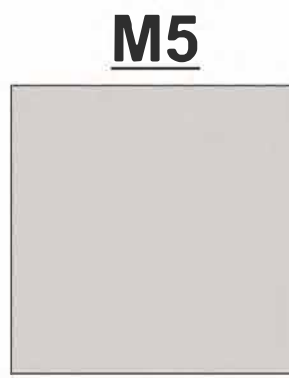
BELDEN, ROMAN BRICK
MEDIUM RANGE, SMOOTH
IRON SPOT. HORIZONTAL
MORTAR TO MATCH
LATICRETE "HEMP"
WEATHERED STRIKE JOINTS.
VERTICAL MORTAR TO MACH
TERRA COTTA. JOINTS FLUSH
WITH FACE.



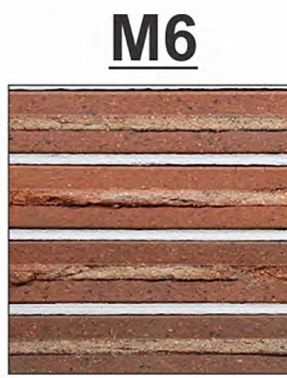
STUCCO FINISH -
TO MATCH DRYVIT "HONEY
TWIST" 383.



GC'S STEEL
FABRICATORS: RAW
STEEL SANDBLASTED
W/EXPOSED WELDS
CLEAR COAT FLAT
FINISH.



"132 MOUNTAIN FOG
APPLIED OVER PORTLAND
CEMENT STUCCO.



BELDEN, ROMAN BRICK
MEDIUM RANGE, SMOOTH
IRON SPOT. FINISH:
SHADOW-TEK- MORTAR TO
MATCH LATICRETE
"HEMP" WEATHERED
STRIKE JOINTS. VERTICAL



"456" OYSTER SHELL
PLASTER OVER
SUBSTRATE.



KAWNEER - ALUMINUM
STOREFRONT SYSTEM
FINISH: #40 BLACK
ANODIZED AA-M10C21A44 /
AAM45C22A44
ARCHITECTURAL CLASS



PATIO STEEL PAINT:
LOW LUSTRE BLACK



METAL PANEL WITH
KYNAR FINISH
PAINT MATTE BLACK



Restaurant Support Office
6800 Fishpond Road, Plano, TX 75024
Tele: 972 769-3557 Fax: 972 769-3101

Store: **Raising Cane's**
1219 E. Ontario Ave.
Corona, CA 92881
Store #RC382
Prototype 2 CA-HC
ERD 4.0

Architect Information:



Architectural
Solutions Group

38 EXECUTIVE PARK
SUITE 310
IRVINE, CA 92614
Contact: Jeff Liederman
(949) 430-7051
jliederman@pridginc.com
Jeff Liederman, Architect

Prototype Update Phase: ERD 4.0

Initial Setup Date: 11/09/18

Project Manager: R.G.

Conceptual Design

Revisions:

#	Date	Description
	08.16.2018	Development Plan Review
	01.10.2019	PPM & CZ Submittal

Sheet Title:

EXTERIOR ELEVATIONS

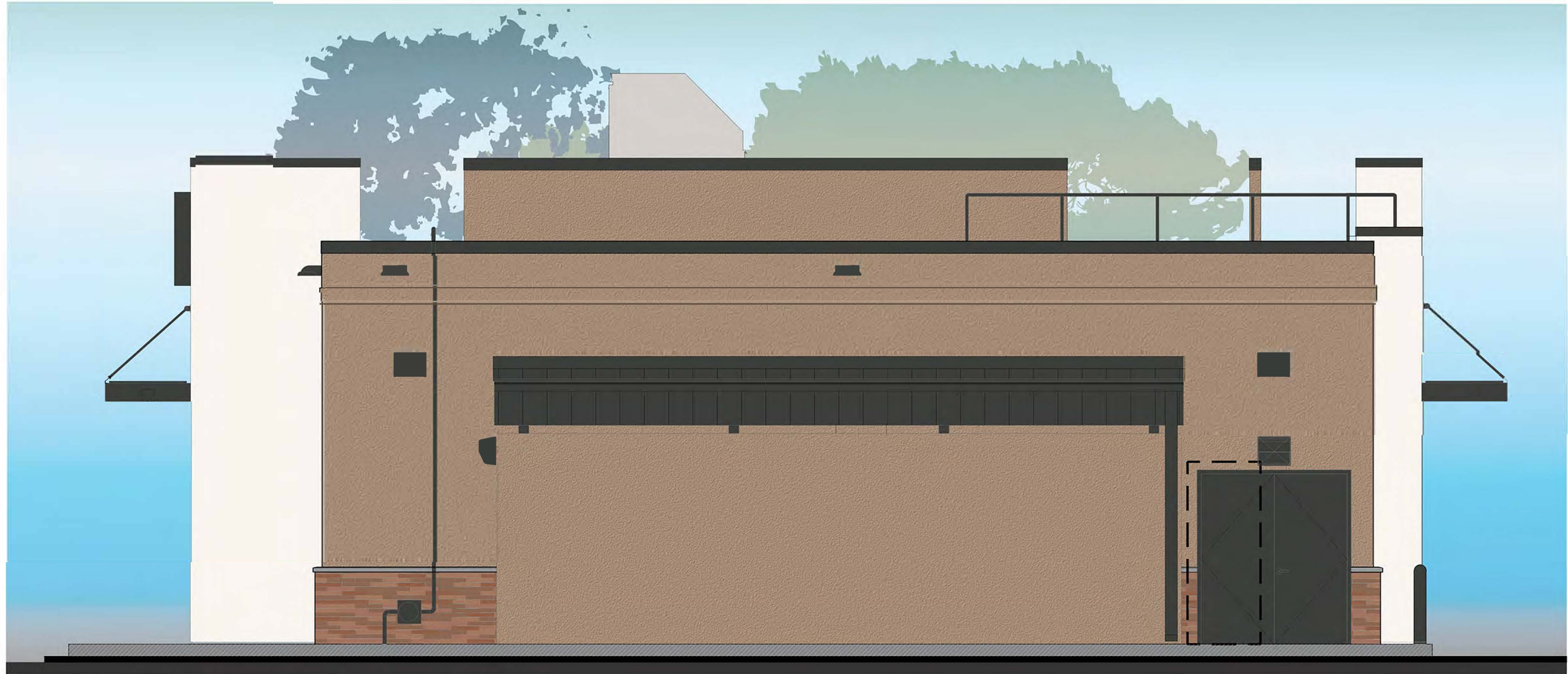
Project Number: RAC17027.0

Drawn By: IRVINE

Sheet Number:

A4.10

EXHIBIT E1



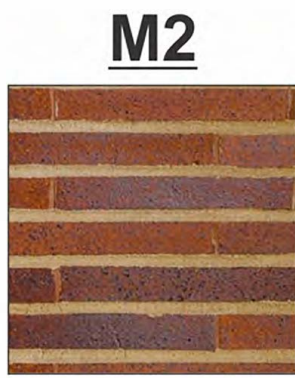
1 | NORTH ELEVATION
1/4"= 1'-0"



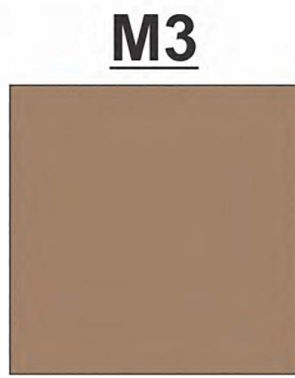
2 | EAST ELEVATION
1/4"= 1'-0"



RECLAIMED METAL
PANEL: CAR HOOD.



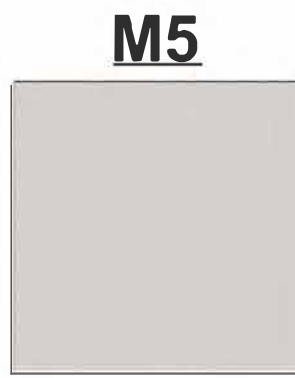
BELDEN. ROMAN BRICK
MEDIUM RANGE. SMOOTH
IRON SPOT. HORIZONTAL
MORTAR TO MATCH
LATICRETE "HEMP"
WEATHERED STRIKE JOINTS.
VERTICAL MORTAR TO MATCH
TERRA COTTA. JOINTS FLUSH
WITH FACE.



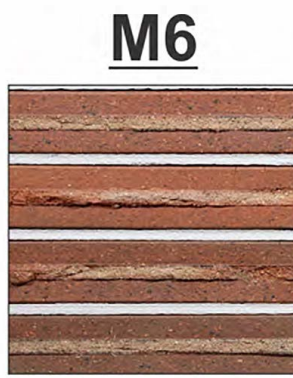
STUCCO FINISH -
TO MATCH DRYVIT "HONEY
TWIST" 383.



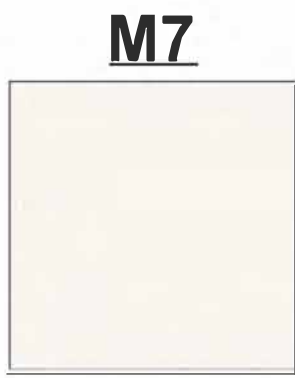
GC'S STEEL
FABRICATORS: RAW
STEEL SANDBLASTED
W/EXPOSED WELDS
CLEAR COAT FLAT
FINISH.



"132 MOUNTAIN FOG"
APPLIED OVER PORTLAND
CEMENT STUCCO.



BELDEN. ROMAN BRICK
MEDIUM RANGE. SMOOTH
IRON SPOT. FINISH:
SHADOW-TEX- MORTAR TO
MATCH LATICRETE
"HEMP" WEATHERED
STRIKE JOINTS. VERTICAL



"456" OYSTER SHELL
PLASTER OVER
SUBSTRATE.



KAWNEER - ALUMINUM
STOREFRONT SYSTEM
FINISH: #40 BLACK
ANODIZED AA-M10C21A44 /
AAM45C22A44
ARCHITECTURAL CLASS



PATIO STEEL PAINT:
LOW LUSTRE BLACK



METAL PANEL WITH
KYNAR FINISH
PAINT MATTE BLACK



Restaurant Support Office
6800 Bishop Road, Plano, TX 75024
Tel: 972 769-3557 Fax: 972 769-3101

Store: **Raising Cane's**
1219 E. Ontario Ave.
Corona, CA 92881
Store #RC382
Prototype 2 CA-HC
ERD 4.0

Architect Information:



38 EXECUTIVE PARK
SUITE 310
IRVINE, CA 92614
Contact: Jeff Liedeman
(949) 430-7051
jliedeman@ppmarch.com
Jeff Liedeman, Architect

Prototype Update Phase: ERD 4.0
Initial Setup Date: 11/09/18
Project Manager: R.G.

Conceptual Design

Revisions:

#	Date	Description
	08.16.2018	Development Plan Review
	01.10.2019	PPM & CZ Submittal

Sheet Title:

**EXTERIOR
ELEVATIONS**

Project Number: RAC17027.0
Drawn By: IRVINE

Sheet Number:

A4 20

EXHIBIT E2