

**Petition to the City Council, Planning and Housing Commission, and  
Infrastructure Committee of the City of Corona, California**

Renegade Towers, LLC is seeking a conditional use permit for a cell phone tower (also known as a “wireless communications tower” or “macro site”) near 3298 Skyline Drive in Corona, California.

We, the undersigned, oppose the construction of this cell phone tower because it will cause significant risks and provide little benefit to those who live near the tower. Here are our reasons:

1. The proposed cell phone tower provides little benefit to the area:

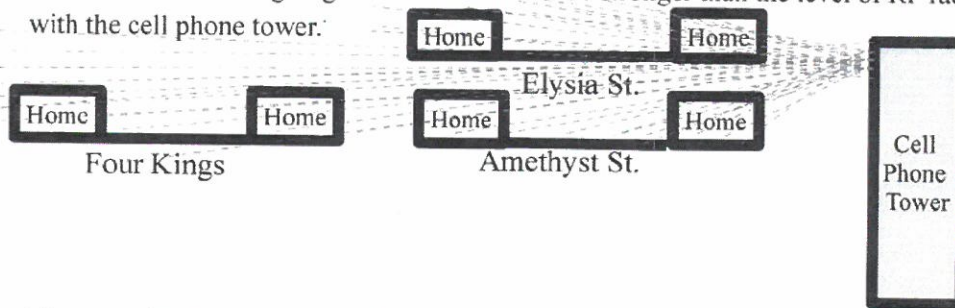
- The tower will be sited below the hills in the area. This means that the surrounding hills will absorb much of the signal produced by tower. This, in turn, reduces the purported benefit of the tower:
  - Drivers on Foothill Pkwy. between W. Chase Dr. and Paseo Grande will still have poor cell phone service.
  - Hikers on Foothill Pkwy. between W. Chase Dr. and Paseo Grande will still have poor cell phone service.
  - Hikers in Hagador Canyon south of Burrero Way will still have poor cell phone service.
  - Hikers in the mountains of the Cleveland National Forest will still have poor cell phone service.

2. The “dead zones” (of very limited or no cell phone service) on Foothill Pkwy will still be there.

- Due to the location of the tower, approximately 2.5 miles of Foothill Parkway between W. Chase Dr. and Paseo Grande would remain without coverage. This, in turn, would result in several more cell phone towers needing to be placed along Foothill Parkway to achieve the desired level of cell phone coverage.

3. The proposed tower will reduce the property values of our homes:

1. Studies have shown decreases in price of 7% - 21% for homes within 330 yards/300 meters of a cell phone tower<sup>3</sup>. There are approximately 154 homes in a 330 yard/300 meter radius of the site<sup>4</sup>.
2. Potential home buyers will search the internet and learn that the World Health Organization (WHO) has identified cell phone tower emissions as a carcinogen<sup>5</sup>.
3. These home buyers will also see that these carcinogens will be transmitted directly into the homes:
  1. The transmitters of the cell phone tower will be pointed directly at the homes on Amethyst<sup>6</sup>.
  2. The transmitters of the cell phone tower will be at a height that will transmit RF radiation into homes. The level of RF radiation going into the homes will be stronger than the level of RF radiation at ground level with the cell phone tower.



3. These carcinogens will also be transmitted into the homes in the surrounding area.

4. There are 13 homes on Amethyst that will suffer the largest drop in property value, since the cell phone tower will be directly behind the backyards of these homes<sup>7</sup>.

4. The proposed tower will put our health at risk:

- Pacemaker users: Cell phone towers present a health risk to pacemaker users<sup>1</sup>. There are at least two pacemaker users; one is a young child.
- The residents of the neighborhood east of the proposed tower will not be at ground level with this tower. Instead, residents will be level with the transmitters. This means that residents will be absorbing high levels of RF radiation all day, every day.
- Multiple studies have found that cell phone towers cause health risk.<sup>2</sup>

**Petition to the City Council, Planning and Housing Commission, and  
Infrastructure Committee of the City of Corona, California**

5. The proposed tower will obstruct our heretofore clear views of the mountains and hillsides:
  - The cell phone tower in question will be 76 feet tall<sup>8</sup>.
    - The homes to the east of Skyline Drive will have their view of the mountains obstructed.
    - The homes to the west of Skyline Drive will have their view of the hillside above Skyline Drive obstructed.
  - This means that our homes will suffer two (2) decreases in property value:
    - Decrease #1: Property value will decrease due to the proximity to the cell phone tower.
    - Decrease #2: Property value will decrease due to our heretofore unobstructed view becoming obstructed.
6. The proposed tower is a large commercial structure in the middle of a residential area.
  - The lot in question is zoned for low-density residential development<sup>9</sup>. The surrounding lots are also zoned for low-density residential development.
  - The properties to the west of Skyline Drive, including the homes adjacent to the lot for the planned cell phone tower, are ranches<sup>10</sup>. A cell phone tower will be out-of-character with these ranches.
7. The proposed cell phone tower will not improve our ability to make or receive calls. Residents use wifi or other solutions to make or receive calls from cell phones while at home.
8. The proposed cell phone tower is a technology that is becoming outdated and is out-of-character with Corona's image as an innovative city. There is a strong trend away from "traditional" cell phone towers, like the proposed cell phone tower. For example, Anaheim, San Francisco, and other cities are deploying other solutions such as Small Cells.

**Alternatives:**

We, the undersigned, instead propose that The City of Corona select one of these options instead:

- #1) Build the cell phone tower in a commercial lot along Foothill Parkway, such as Quality Growers Nursery. Benefits of this type of location:
  - Minimal impact to health of residents: At this location, no homes would be at the level of the transmitters.
  - Not out-of-character with the area: The property is already zoned for commercial use.
  - No obstruction of views: The tower would be on a hill.
  - Larger area of cell phone service: The signal from a tower at this location would cover at least twice the area that would be covered by the proposed site on Skyline. This, in turn, would likely reduce the number of additional towers that would be needed to be built along Foothill Parkway.
- #2) Create a more comprehensive solution that would benefit the City, its residents, and the commuters on Foothill Parkway. Specifically, we propose a Small Cell (also known as "micro cell") solution. Small Cells are a proven technology that has been implemented in other cities, including Anaheim and San Francisco. We believe Small Cells to be a better solution:
  - Revenue for the City of Corona: The city could charge rent to providers who mount Small Cells on street lights and traffic lights.
  - Aesthetics: Small Cells are about the size of a large duffel bag and could be installed atop street lights and traffic signals.
  - Reduced Health Risks: Due to their lower power consumption, the health risk to those near a small cell is significantly lower than those near a "traditional" cell phone tower.

**Conclusion:**

Due to the risks described in this petition, we, the undersigned, strongly recommend that the City Council, Planning and Housing Commission, and Infrastructure Committee deny the conditional use permit sought by Renegade Towers for a cell phone tower near 3298 Skyline Drive in Corona, California.

**Petition to the City Council, Planning and Housing Commission, and  
Infrastructure Committee of the City of Corona, California**

**Notes**

1 – An email explaining the risk that cell phone towers present to pacemaker users has been sent to the City, by one of the residents who lives with one of the pacemaker users in question.

2 – Multiple studies on the health risks caused by living in proximity to cell phone towers are listed here:  
<http://electromagnetichealth.org/wp-content/uploads/2014/07/Cell-tower-studies-re-cancer.pdf>

3 – The 21% decrease in property value: [http://www.prrs.net/papers/Bond\\_Squires\\_Using\\_GIS\\_to\\_Measure.pdf](http://www.prrs.net/papers/Bond_Squires_Using_GIS_to_Measure.pdf):  
Page 4, Section 2.3, second paragraph

A 15% decrease in property value was found by a different study; these results can be found in the same document on  
Page 4, Section 2.4, second paragraph

The 7% decrease in property value:  
<http://www.ic.gc.ca/eic/site/smt-gst.nsf/eng/sf08353.html>, Section C, final paragraph

4 – Refer to Appendix B for a map showing the homes within 330 yards/300 meters of the planned cell phone tower.

5 – The World Health Organization (WHO) has identified cell phone tower emissions as a carcinogen:  
<http://www.who.int/mediacentre/factsheets/fs193/en/>, Long Term Effects section, 4<sup>th</sup> paragraph

6 – In the meeting on Saturday, September 30, 2017, the staff from Renegade Towers stated these facts about the positioning of the transmitters and the height at which the transmitters would be positioned.

7 – Refer to Appendix D for a photograph showing the proximity of the homes to the cell phone tower. The photograph was taken at the fence of the lot on which the planned cell phone tower is to be built.

8 – The height of the planned tower is taken from the illustration of the planned cell phone tower in the documents distributed by Renegade Towers in meeting on Saturday, September 30, 2017. A scan of this page of the handout can be found in Appendix C.

9 – City of Corona General Plan, Section B3. <https://www.coronaca.gov/home/showdocument?id=218>

10 – Refer to the satellite photograph on the next page to see the ranches.

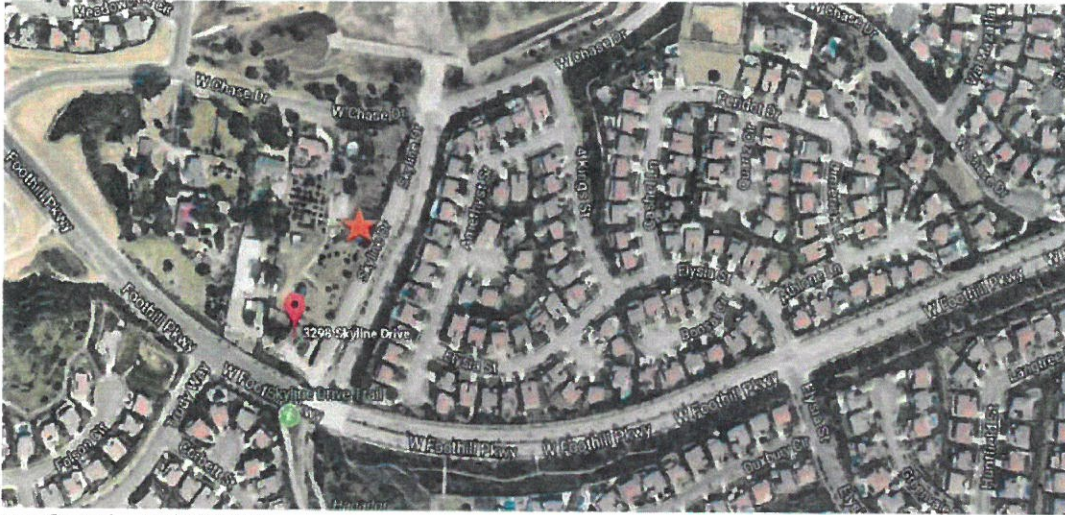


**Petition to the City Council, Planning and Housing Commission, and  
Infrastructure Committee of the City of Corona, California**

**Appendix A – Satellite View of Homes and Ranches Impacted Neighborhood**

Satellite view of homes and ranches near 3298 Skyline Drive (planned site for cell phone tower):

★ = Approximate location of planned cell phone tower



Source of image: Google, 10/16/2017

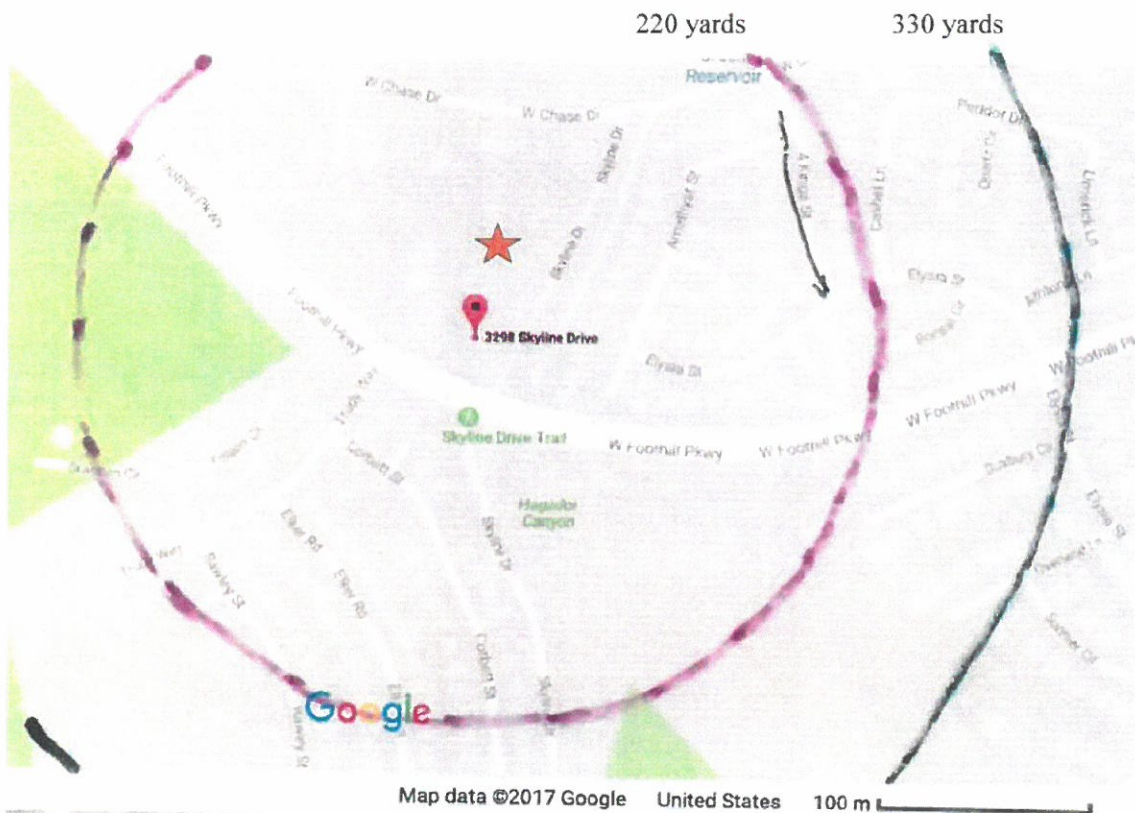
**Petition to the City Council, Planning and Housing Commission, and  
Infrastructure Committee of the City of Corona, California**

**Appendix B – Map showing homes within a 220 yard/200 meter radius and a 330 yard/300 meter radius**

★ = Approximate location of planned cell phone tower

Reddish-Purple line: 220 yard/200 meter radius of the planned cell phone tower. There are approximately 97 homes within this radius<sup>1</sup>.

Black line: 330 yard/300 meter radius of the planned cell phone tower. There are approximately 154 homes within this radius<sup>2</sup>.



Source of image: Scan of printout of Google map. Printout printed on 10/8/2017.

**Notes**

1 – Impact of cell phone towers on property values within a 220 yard/200 meter radius:

[http://www.prrs.net/papers/Bond\\_Squires\\_Using\\_GIS\\_to\\_Measure.pdf](http://www.prrs.net/papers/Bond_Squires_Using_GIS_to_Measure.pdf):

Page 11, first paragraph

2 – Impact of cell phone towers on property values within a 330 yard/300 meter radius:

[http://www.prrs.net/papers/Bond\\_Squires\\_Using\\_GIS\\_to\\_Measure.pdf](http://www.prrs.net/papers/Bond_Squires_Using_GIS_to_Measure.pdf):

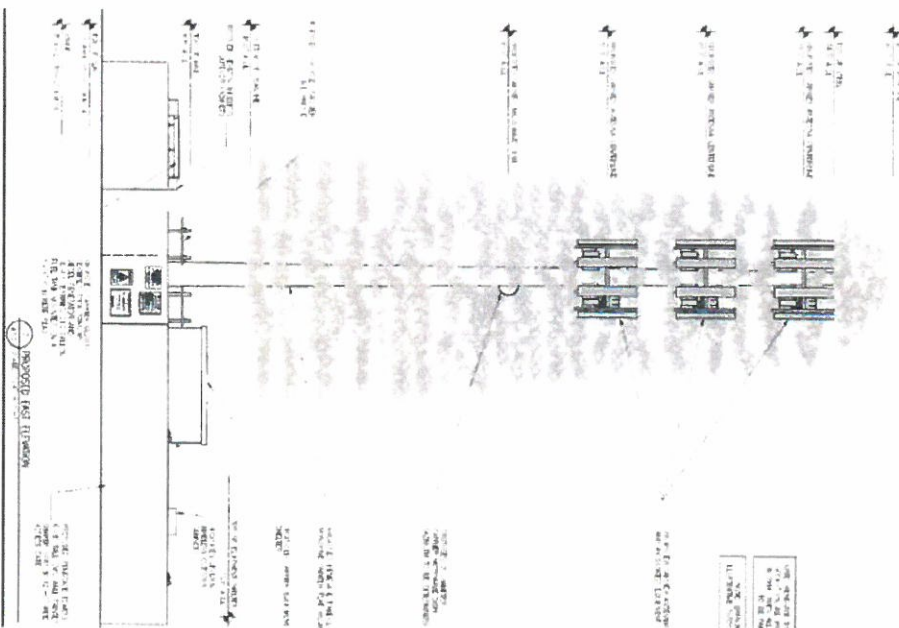
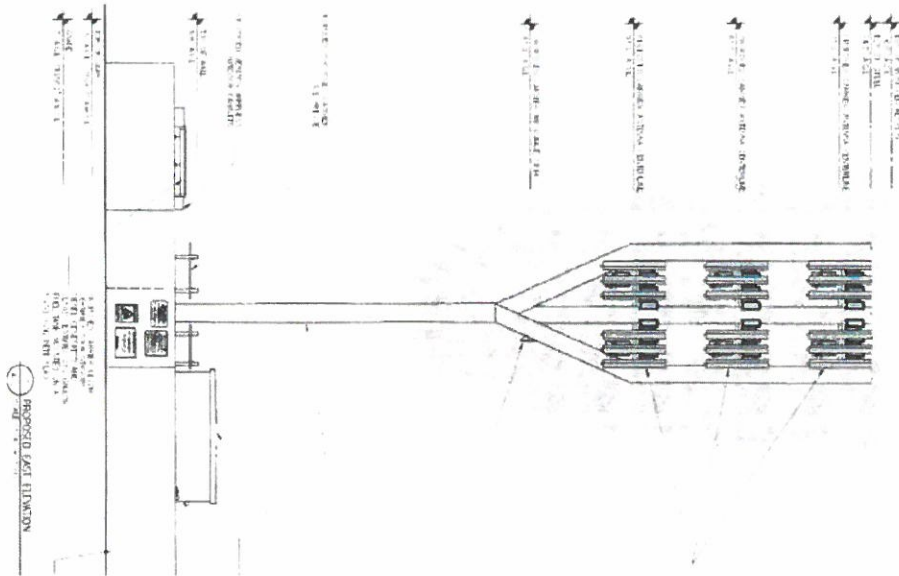
Page 7, Section 2.5.4, first paragraph

**Petition to the City Council, Planning and Housing Commission, and  
Infrastructure Committee of the City of Corona, California**

**Appendix C – Height of Planned Cell Phone Tower = 76 feet**



Preliminary Designs – New Wireless Tower





Petition to the City Council, Planning and Housing Commission, and  
Infrastructure Committee of the City of Corona, California

Appendix D – Photo showing proximity of homes to site of planned cell phone tower



*Picture was taken by standing next to fence beside proposed site of cell phone tower.*

Petition to the City Council, Planning and Housing Commission, and  
Infrastructure Committee of the City of Corona, California

[illegible]



**Petition to the City Council, Planning and Housing Commission, and  
Infrastructure Committee of the City of Corona, California**

[illegible]

minors  
out  
their  
prison  
counts  
too!

**Petition to the City Council, Planning and Housing Commission, and  
Infrastructure Committee of the City of Corona, California**

[illegible]

**Petition to the City Council, Planning and Housing Commission, and  
Infrastructure Committee of the City of Corona, California**

[illegible]



**Petition to the City Council, Planning and Housing Commission, and  
Infrastructure Committee of the City of Corona, California**

[illegible]

Petition to the City Council, Planning and Housing Commission, and  
Infrastructure Committee of the City of Corona, California

[illegible]

**Petition to the City Council, Planning and Housing Commission, and  
Infrastructure Committee of the City of Corona, California**

[illegible]



**Petition to the City Council, Planning and Housing Commission, and  
Infrastructure Committee of the City of Corona, California**

[illegible]

**Petition to the City Council, Planning and Housing Commission, and  
Infrastructure Committee of the City of Corona, California**

[illegible]

**Petition to the City Council, Planning and Housing Commission, and  
Infrastructure Committee of the City of Corona, California**

[illegible]



**Petition to the City Council, Planning and Housing Commission, and  
Infrastructure Committee of the City of Corona, California**

[illegible]

Petition to the City Council, Planning and Housing Commission, and  
Infrastructure Committee of the City of Corona, California

[illegible]

**Petition to the City Council, Planning and Housing Commission, and  
Infrastructure Committee of the City of Corona, California**

[illegible]

**Petition to the City Council, Planning and Housing Commission, and  
Infrastructure Committee of the City of Corona, California**

[illegible]

**Petition to the City Council, Planning and Housing Commission, and  
Infrastructure Committee of the City of Corona, California**

[illegible]



**Petition to the City Council, Planning and Housing Commission, and  
Infrastructure Committee of the City of Corona, California**

[illegible]