



# Citywide Park ADA Improvements

PARKS AND RECREATION COMMISSION

MAY 8, 2019

# What is ADA?

2

- ▶ Americans with Disabilities Act (ADA) 1990
- ▶ Effective 1992
- ▶ Civil rights law
- ▶ Prohibits discrimination against individuals with disabilities in all areas of public life, including:
  - ▶ Jobs
  - ▶ Schools
  - ▶ Transportation
  - ▶ Public and private places open to the general law
- ▶ Purpose: ensure all people with disabilities have the same rights and opportunities as everyone else



Parks ADA Improvement Projects

# Update to Corona's Transition Plan

3

- ▶ 09/07/11 - City Council adopts Resolution designating ADA Coordinator and adopting ADA Non-discrimination Policy and Grievance Procedure
- ▶ 03/06/13 - City Council adopts Resolution updating the ADA Transition Plan
  - ▶ ADA Self-Evaluation and Transition Plan
    - ▶ Policies, Programs and Procedures
    - ▶ Buildings, Facilities and Parks
      - ▶ Facility Reports
      - ▶ Prioritization of Barrier Removal
      - ▶ Sidewalk and Curb Ramp Programs



**CITY OF CORONA  
ADA COORDINATOR  
(951) 739-4823**

# ADA Park Issues for Remediation

4

## ► Signage

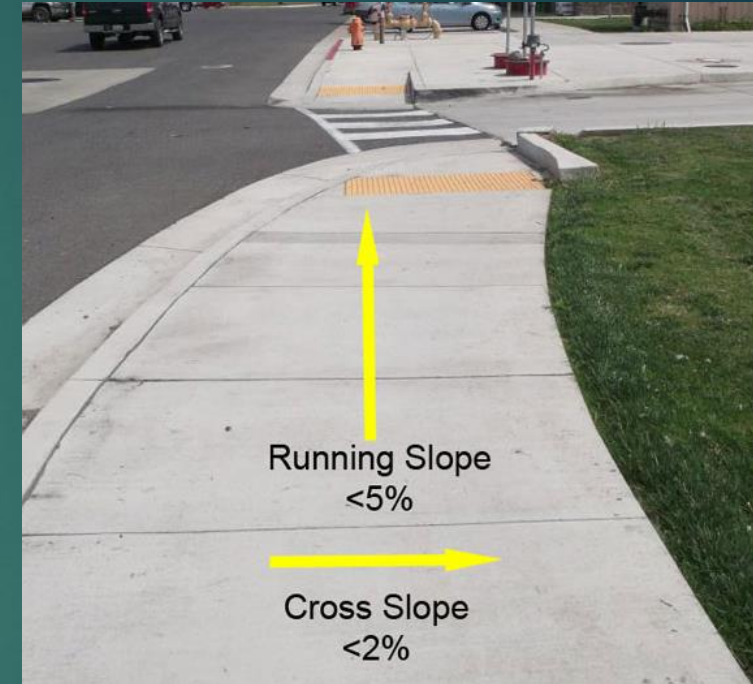
- Appropriate signage
- Installed at required heights

## ► Sidewalk and Parking Lots

- Slope and cross-slopes
- Reduce to 2% maximum
- Appropriate number of accessible stalls
- Restriping per current standards

## ► Play areas

- Provide accessible routes and surfaces to ground play elements
- Appropriate ground clearance



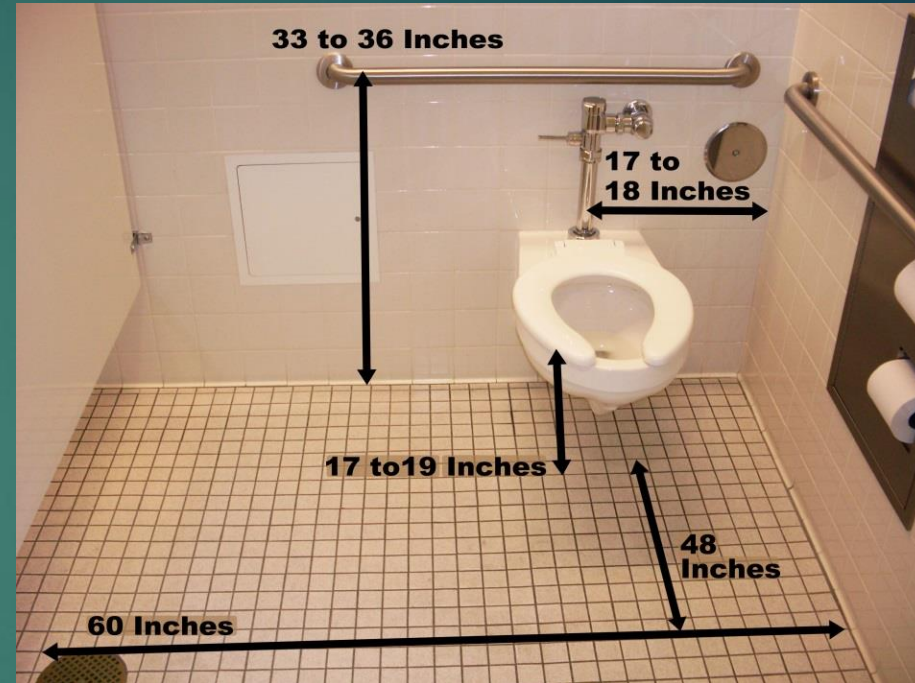


# ADA Park Issues for Remediation

5

## ► Restrooms

- Signage
- Height of fixtures, including dispensers and grab bars
- Faucet run time
- Clearance areas
- Hardware on stall doors
- Door closing speed and opening force



Parks ADA Improvement Projects

# 5-Year Schedule

2019	2020	2021	2022	2023
Citrus Mountain Gate Promenade Santana	Auburndale Contreras Cresta Verde Ontario Ridgeline Victoria	Border Brentwood Fairview Kellogg Sheridan Tehachapi	Husted Lincoln Mangular Rimpau Serfas Club Spyglass Stagecoach Village	Buena Vista Butterfield Chase City Eagle Glen Jameson Parkview River Road Rock Vista

# Upcoming Improvements

7

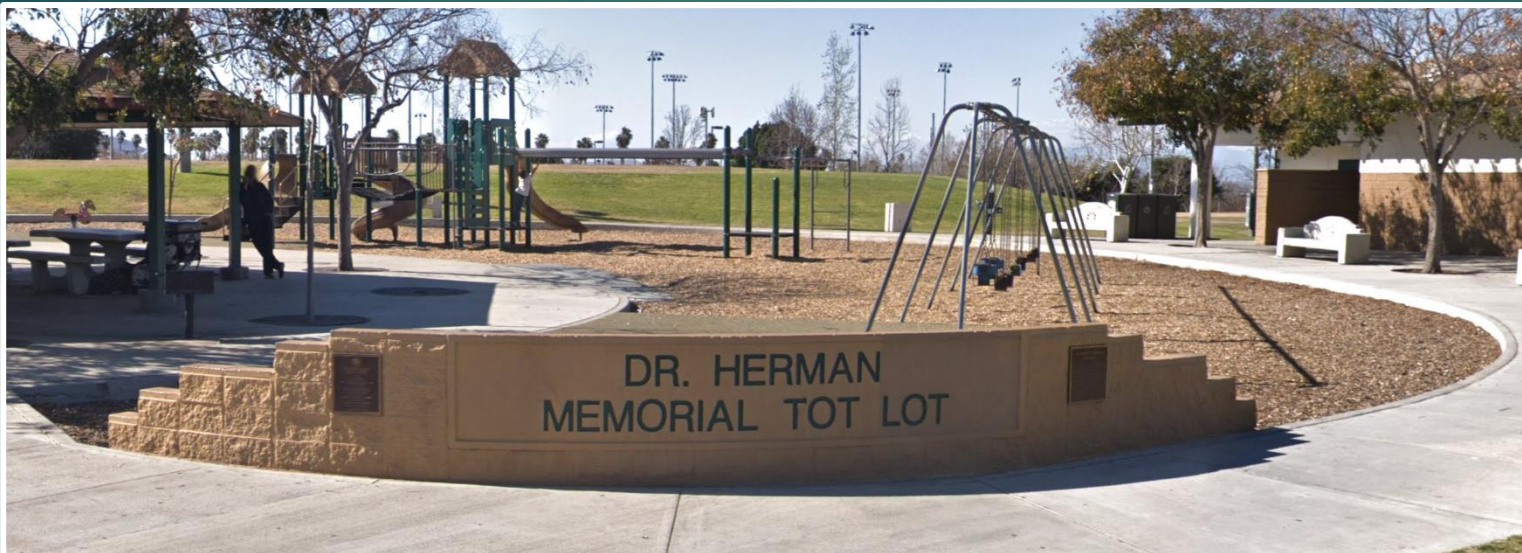
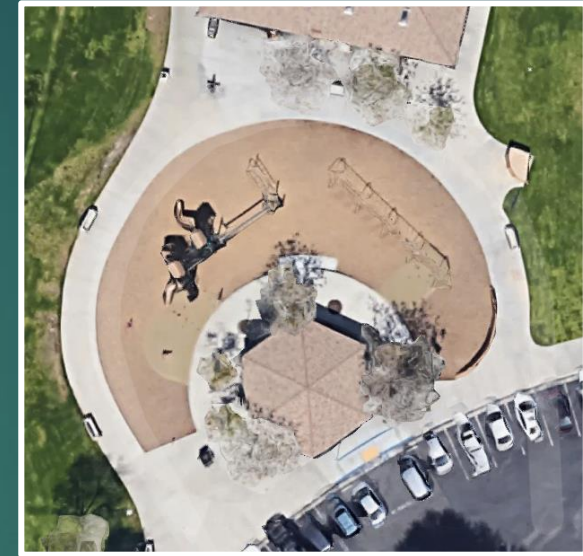
Item	Citrus Park	Mountain Gate Park	Promenade Park	Santana Park	Parks ADA Improvement Projects
ADA parking stall modifications	★	★	★	★	
Rubberized surfacing to play components	★	★	★	★	
Minor modifications to restroom fixtures/signage	★	★	★	★	
Installation of new playground equipment		★		★	
Modifications to sidewalks and ramps			★	★	
Additional accessible picnic tables (complete)		★	★		



*Additional funding requested for new playground equipment in FY 19/20 budget*

# New Playground

- ▶ Existing Playground:
  - ▶ 6,400 SF footprint
  - ▶ 8 swings, 2 spring toys and playground set
- ▶ Emphasize inclusiveness and accessibility
- ▶ Conduct survey for community input
- ▶ Provide update to Commission





# Timeline

9

Parks ADA Improvement Projects

## Playground Survey & Design

Complete by  
June 2019

## Bid

June to July 2019

## Noticing for Construction

July to August  
2019

## Construction

August to  
December 2019

# Questions?

10

Parks ADA Improvement Projects

ADA Coordinator  
Public Works Director  
(951) 739-4823