



Library and Recreation, Maintenance Services & Public Works

PROP 68 GRANT PROGRAM

David Montgomery-Scott

OVERVIEW

- Proposition 68 Grant
 - Statewide Park Program (SPP)
 - Per Capita
- Proposed Projects
 - City Park
 - Early History
 - Recent History
 - Master Plan
 - Vision
 - Butterfield Park Playground
 - Tehachapi Park Playground
- Timeline and Next Steps



www.parks.ca.gov

PROPOSITION 68

- Parks and Water Bond Act of 2018
 - SB 5 (De León) California Drought, Water, Parks, Climate, Coastal Protection and Outdoor Access for All Act of 2018
- Authorized the sale of \$4.1B in general obligation bonds
- Funding for various programs related to:
 - Habitat conservation
 - Parks
 - Water-related projects
- Approved by voters on June 5, 2018 ballot election
- Two components:
 - Statewide Park Program (SPP)
 - Per Capita Program



www.parks.ca.gov

PROP 68 – STATEWIDE PARK PROGRAM (SPP)

- Competitive grant for critically underserved communities
- Eligible projects:
 - Create a new park
 - Expand an existing park
 - **Renovate an existing park**
- Grant amount per application:
 - **\$8,500,000 – maximum grant request**
 - \$200,000 – minimum grant request
- No match required for critically underserved areas
 - 20% may be required if population requirements not met
- Points awarded for community-based planning and outreach



www.parks.ca.gov

PROP 68 – PER CAPITA PROGRAM

- Not competitive – based on population
- \$185,000,000 allocated to program
- Funds available for park:
 - Rehabilitation
 - Creation
 - Improvement
- Apply by submitting questionnaire
- Match required if park not located in severely disadvantaged community
- Preliminary estimates of available funds:
 - \$200,000 per City
 - \$400,000 per County



www.parks.ca.gov

PROPOSED PROJECTS



- Statewide Park Program (SPP)
 - City Park
- Per Capita
 - Butterfield Park Playground
 - Tehachapi Park Playground

PROPOSED CITY PARK PROJECT



- Early History
- Recent History
- Reutilization Plan
- Vision

CITY PARK - EARLY HISTORY

- Public grounds park since 1913
- 20.5 Acres
- Community gathering area, regional destination and way stop for travelers:
 - Grand Prix Race
 - Wading Pools
 - Municipal Plunge
 - Baseball Diamond
 - Picnics and Art Shows



Staff photo by Iris Hayward

A few spectators stroll among painting and exhibits on display in City Park. The Corona Art Association art fes-

tival drew large crowds Sunday. More than 100 paintings were on display for judging. June 3, 1975

Corona picnic and art show draws hundreds

CORONA — Several hundred people flowed through City Park Sunday in balmy sunny weather to enjoy a community picnic, art show and city-sponsored recreational activities.

The spring art festival, sponsored by the Corona Art Association, attracted several dozen artists who displayed more than a hundred works of art.

The sweepstakes winner was Carl Marshall, a member of the

Arlington Art Guild, who won the best-of-show award with a portrait painting of Clarence Muse, a prominent Riverside County composer and actor.

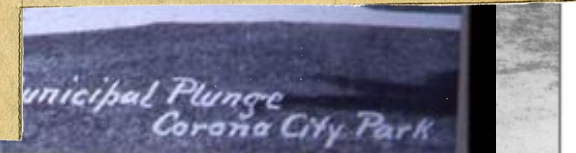
Marshall, a Riverside artist having his first showing in Corona, won a total of six ribbons, including a first place in oils and a first place in graphics. Among the Marshall works on display were a large portrait of an Indian

and several studies of black people.

The Old-Timers Association sponsored the community picnic, which drew former residents

from as far away as San Francisco, Portersville and Fresno.

The picnic has been an annual event in Corona since 1929, held the first Sunday in June.



CITY PARK - RECENT HISTORY

- Renovations and transformations
 - 1960's – City Pool
 - 1970's – Armory Lease
 - 1980's – Bandshell
 - 1990's – Skate Park
 - 2010's – Basketball and Volleyball Courts



CITY PARK – REUTILIZATION PLAN

- Developed in 2012
- Not adopted
- Framework
- Unify park elements and purpose

CORONA CITY PARK REUTILIZATION PLAN

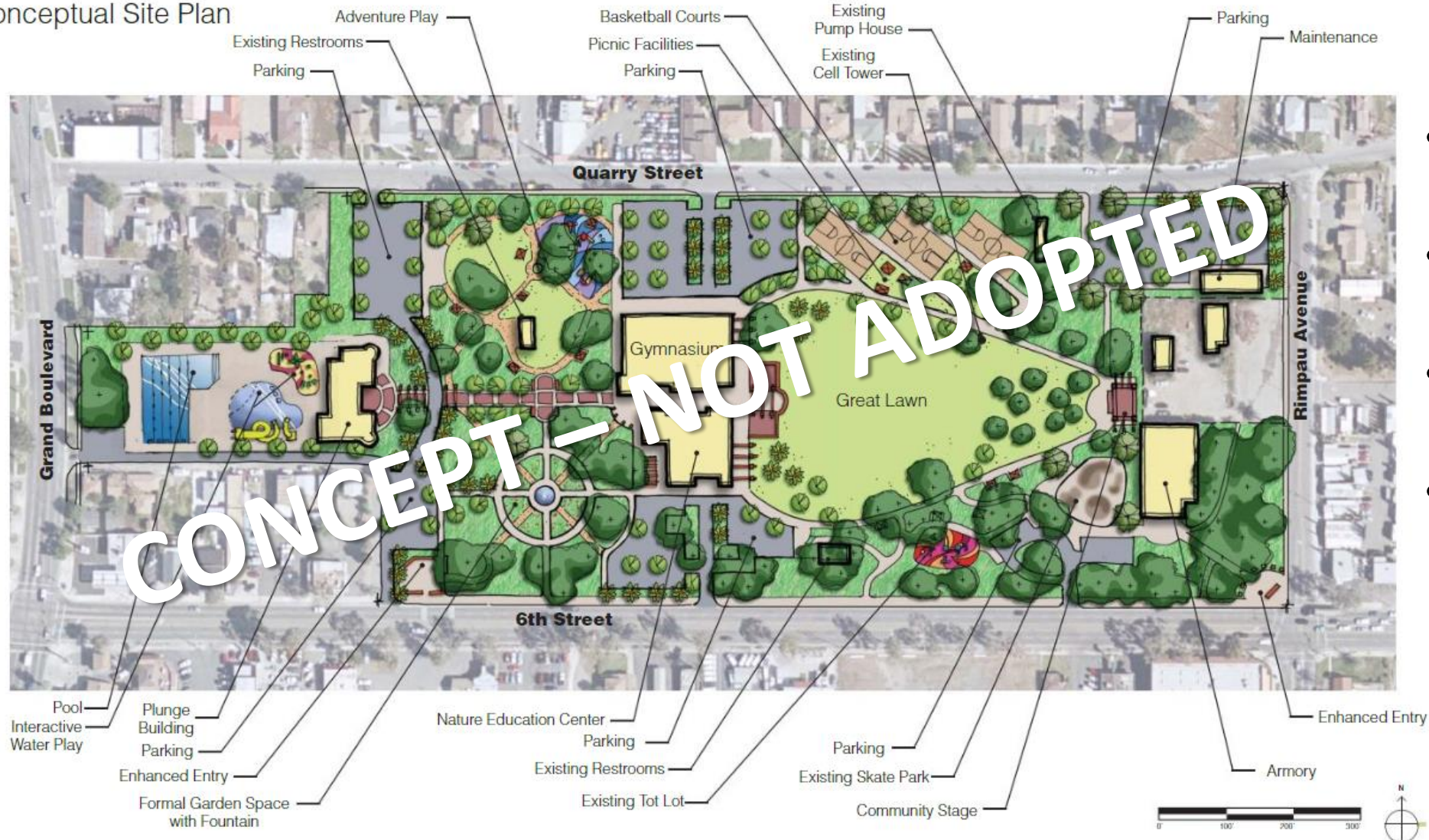


ANALYSIS – Bringing Families Back to City Park



CITY PARK - VISION

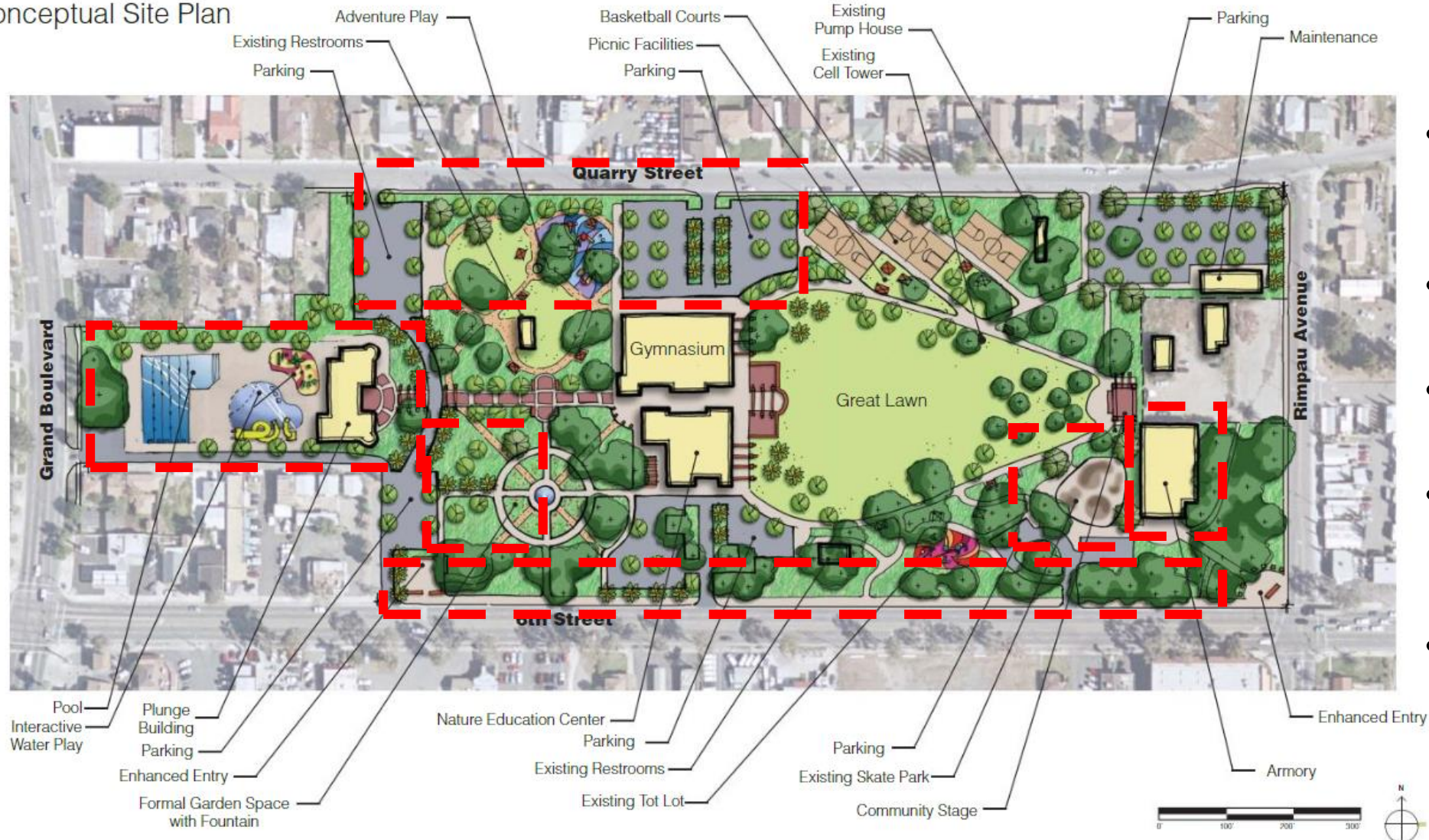
Conceptual Site Plan



- New epicenter of Corona
- Regular events and activities
- Cohesive purpose
- Spark for downtown revitalization efforts

CITY PARK – PROPOSED GRANT PROJECTS

Conceptual Site Plan



- Development of Community/Senior Center
- New Aquatic Center
- Increase parking and flow
- Remove or relocate skate park
- Expand playground area

PER CAPITA GRANT – PLAYGROUND REPLACEMENTS



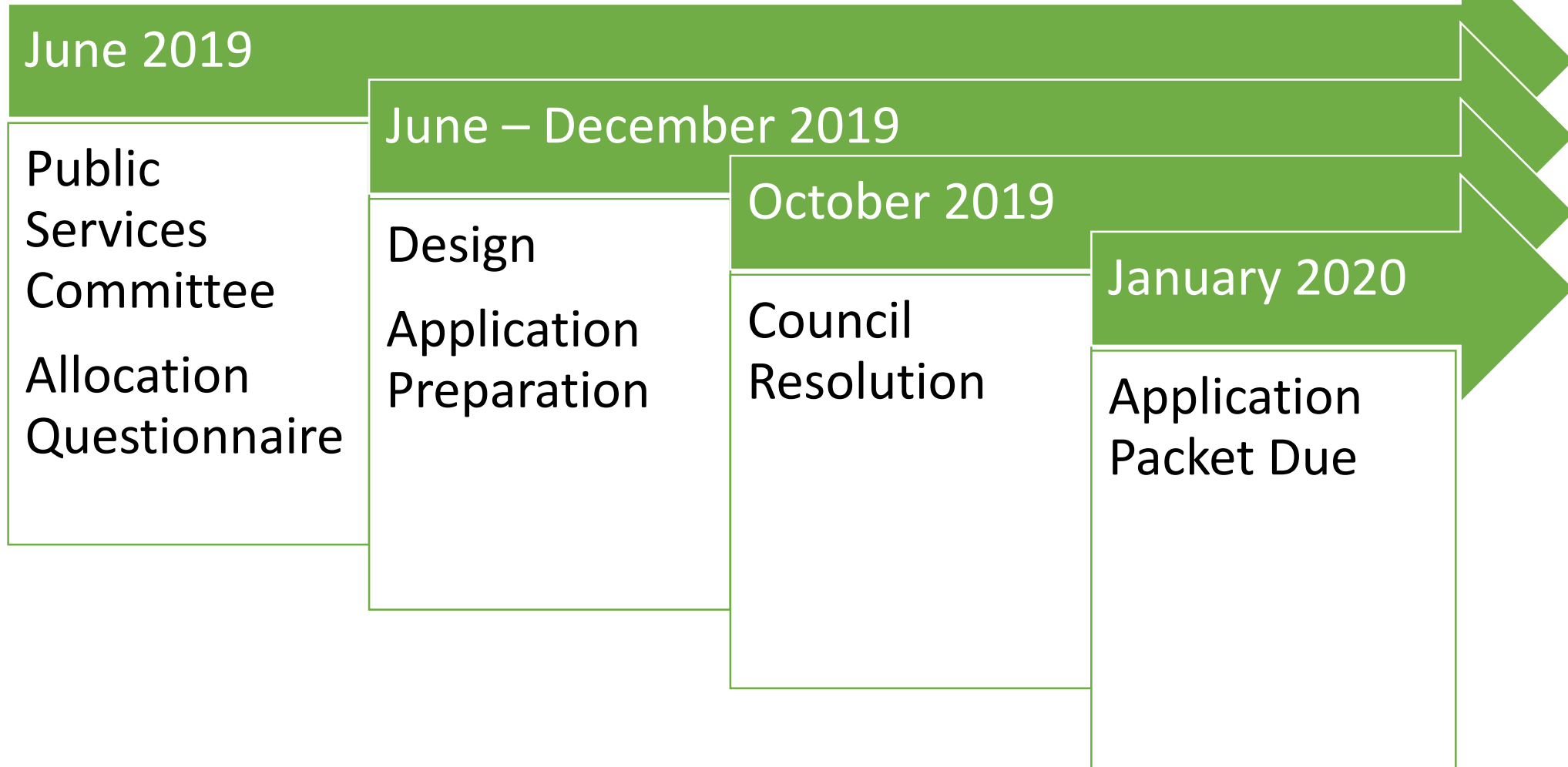
TIMELINE AND NEXT STEPS

Statewide Park Program



TIMELINE AND NEXT STEPS

Per Capita Program



QUESTIONS?



(951) 739-4985



David.Montgomery-Scott@CoronaCA.gov



www.CoronaCA.gov



www.CoronaCA.gov



Get the info you want straight to your inbox, sign up for eNotifications at www.CoronaCA.gov/Subscribe