



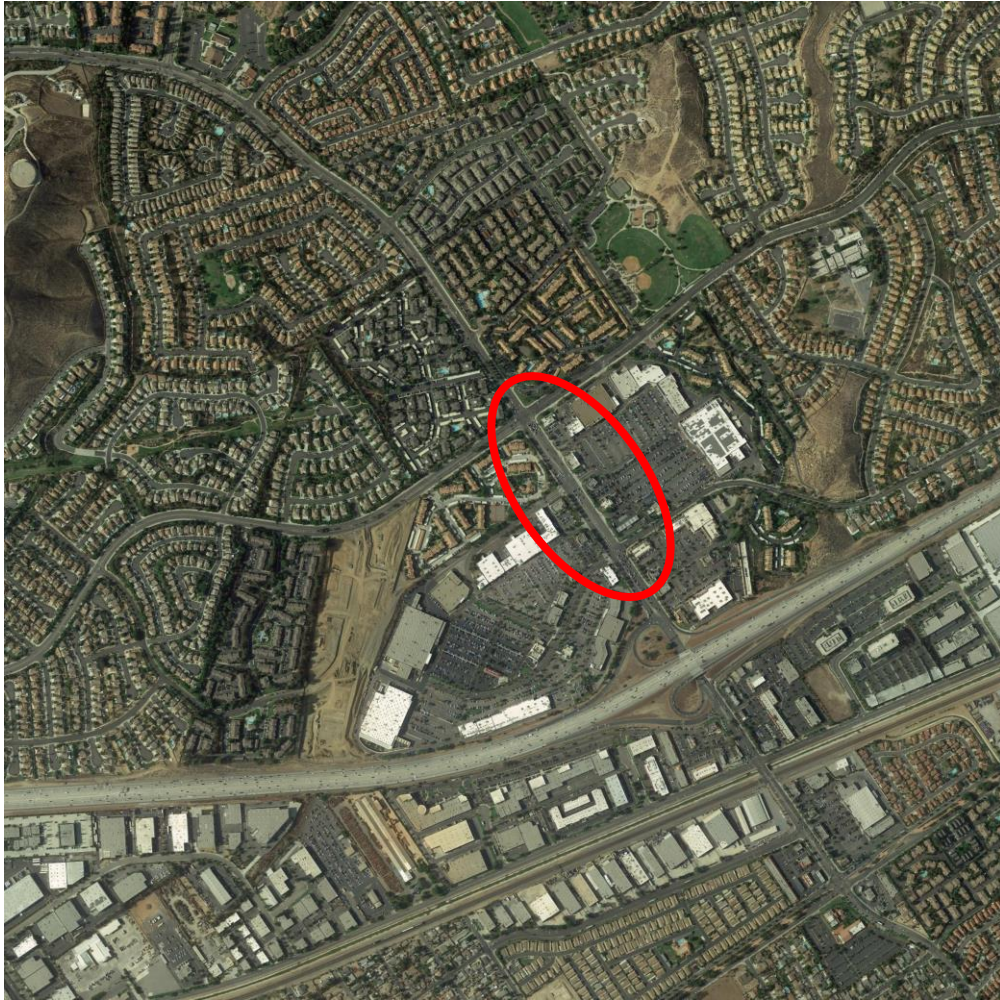
Planning Commission
May 20, 2019

Public Works Department

LOS on McKinley near Shopping Centers

Dennis Ralls, T.E. – PW Program Manager

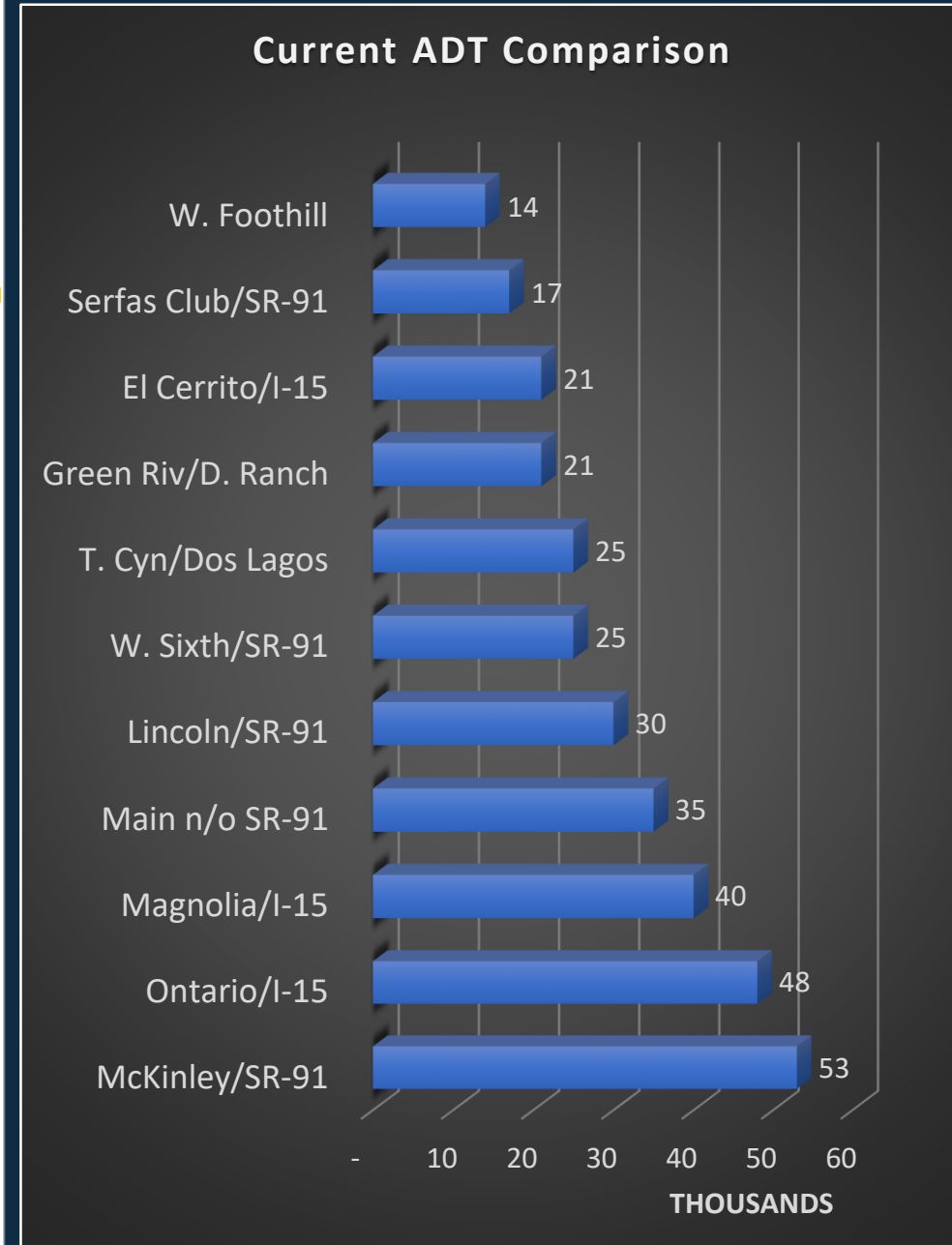
Level of Service (LOS) at McKinley Shopping Centers



- McKinley Traffic Statistics
- What is Level of Service (LOS)?
- Current McKinley LOS
- McKinley Signal Operations

McKinley Traffic Statistics

- Highest Average Daily Traffic in Corona (Griffin to SR-91)
 - Nearly 56,000 (2015)
 - 53,000 (2018)
- Only at McKinley Signals:
 - Costco Center (Enter / Exit)
 - 1,800 / 1,500 VPH
 - Walmart Center (Enter / Exit)
 - 1,100 / 1,100 VPH



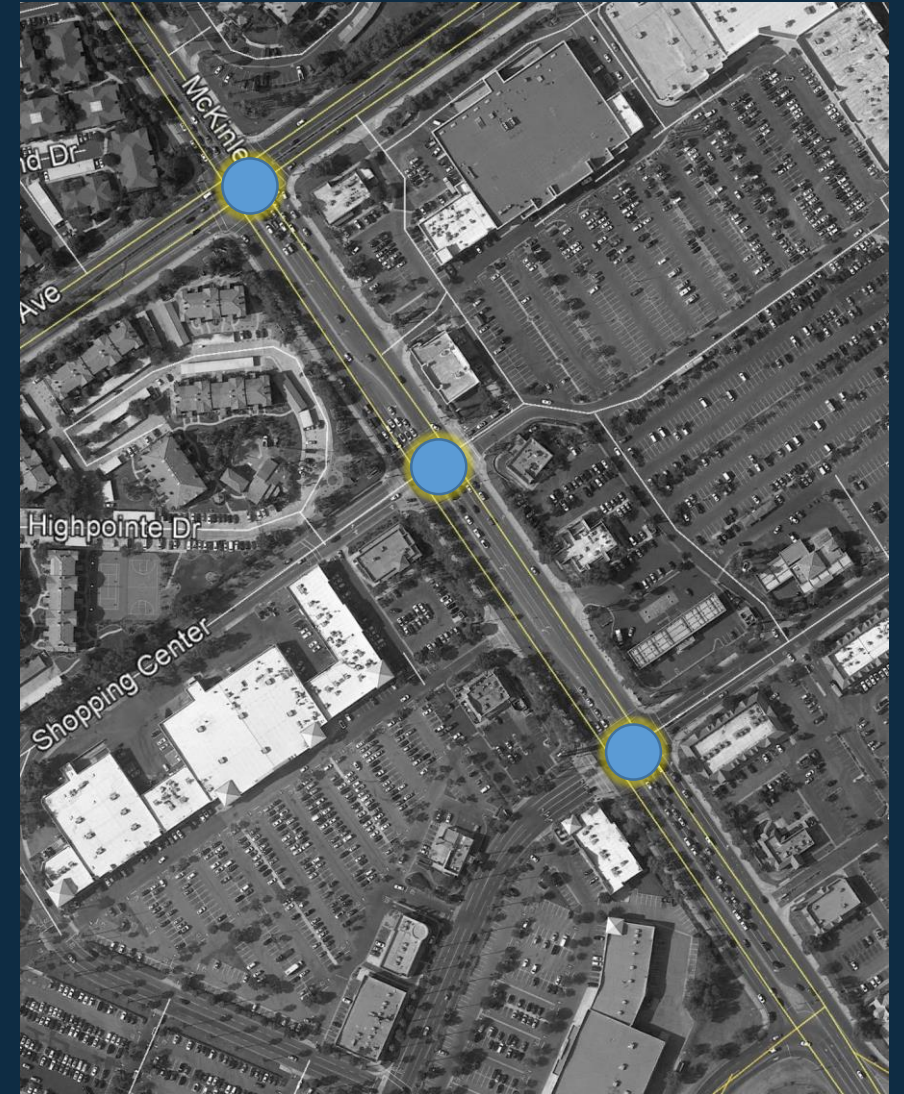
Intersection Level of Service Definitions			
LOS	Interpretation	Signalized Intersection Delay (s/v)	Stop-Controller Intersection Average Stop Delay (sec)
A	<u>Excellent</u> operation. All approaches to the intersection appear quite open, turning movement are easily made, and nearly all drivers find freedom of operation.	≤ 10	≤ 10
B	<u>Very good</u> operation. Many drivers begin to feel somewhat restricted within platoons of vehicles. This represents stable flow. An approach to an intersection may occasionally be fully utilized and traffic queues start to form.	>10 and ≤ 20	>10 and ≤ 15
C	<u>Good</u> operation. Occasionally backups may develop behind turning vehicles. Most drivers feel somewhat restricted.	>20 and ≤ 35	>15 and ≤ 25
D	<u>Fair</u> operation. There are no long-standing traffic queues. This level is typically associated with design practice for peak periods.	>35 and ≤ 55	>25 and ≤ 35
E	<u>Poor</u> operation. Some long-standing vehicular queues develop on critical approaches.	>55 and ≤ 80	>35 and ≤ 50
F	<u>Forced flow</u> . Represents jammed conditions. Backups from locations downstream or on the cross street may restrict or prevent movements of vehicles out of the intersection approach lanes; therefore, volumes carried are not predictable. Potential for stop-and-go-type traffic flow.	> 80	> 50

What is Level of Service?

- Categorical measurement simplifying the quality of operation at an intersection related to time.
- Units: Seconds / Vehicle
- “A” through “F” Letter Grade
- Signals and Stop Signs are different.
- Average of all movements and lanes

Current McKinley LOS (2017)

INTERSECTION	AM	Noon	PM	Sat
McKinley / Promenade	C	D	D	D
McKinley / Shopping Ctr	B	C	C	C
McKinley / Griffin	C	D	D	E





McKinley Signal Operations

- Our Methodology
- Challenges
- Traffic Video



QUESTIONS?



(951) 279-3664



Dennis.Ralls@CoronaCA.gov



www.CoronaCA.gov



www.CoronaCA.gov



Get the info you want straight to your inbox, sign up for eNotifications at www.CoronaCA.gov/Subscribe