



## Agenda Report

---

File #: 19-0598

---

### AGENDA REPORT REQUEST FOR CITY COUNCIL ACTION

DATE: 06/19/2019

TO: Honorable Mayor and City Council Members

FROM: Police Department

SUBJECT:

City Council consideration of an Exception to Bidding to Watson Furniture for Public Safety Dispatch furniture utilizing National Association of State Procurement Officials (NASPO) Valuepoint Contract #5715.

**RECOMMENDED ACTION:**

That the City Council:

1. Authorize an Exception to Bidding pursuant to Municipal Code Section 3.08.140 (c) which states, "**Competitive Bidding Already Completed**, purchases shall be submitted to the Purchasing Division on a requisition form signed by the Department Director, accompanied by the approved Department Memorandum that certifies that a competitive bid procedure has been conducted by another public agency such as CMAS, GSA, or WSCA and that the price to the City is equal to or better than the price to that public agency. The approval thresholds of such transactions are governed by the same amounts outlined in Corona Municipal Code (CMC) Sections 3.08.060, 3.08.070, or 3.08.080 as applicable," to Watson Furniture in the amount of \$197,955.73 for the design, product and installation of furniture in the Public Safety Dispatch Center.
2. Authorize the Purchasing Manager to issue a Purchase Order to Watson Furniture through the NASPO Contract #5715 to purchase Public Safety Dispatch furniture in the amount of \$197,955.73 and approve any necessary change orders up to the amount provided by (CMC) 3.08.070(i) which states, "**Dollar Limits and Change Orders or Amendments**. The dollar limits indicated herein shall apply to the original contract and to any amendments or change orders. To this end, therefore, unless an exception provided in Section 3.08.140 below applies, any contract amendment or change order which would increase the contract amount above any threshold stated herein shall comply with the requirements applicable to the increased contract amount. For professional service agreements awarded by the City Council, unless a lower or higher amount is stated in the City Council staff report for the project or

directed by the City Council, the City Manager, or his designee, shall have authority to approve contract amendments or change orders up to the lesser of either \$100,000 or 10% of the original contract amount.”

**ANALYSIS:**

The 911 Dispatch Communication Center provides twenty-four (24) hours a day, seven (7) days a week service in the answering of all emergency and non-emergency police, fire, and medical calls. The center is staffed by a team of twenty-one (21) full-time Public Safety Dispatchers, two (2) part-time Public Safety Dispatchers, and four (4) Dispatch Supervisors, each of whom are committed to providing exceptional services to the public. The Communication Center utilizes state-of-the-art technology to provide fast and effective emergency communication services, they use sophisticated radio communication, and a Computer Aided Dispatch and Records Management system.

The furniture that is currently in the Police Department Public Safety Dispatch Communications Center was purchased for approximately \$180,000 in 2008. The furniture has a 10-year life cycle based on a twenty-four (24) hours a day, seven (7) days a week usage. The current furniture has reached its end of life and continues to have problems with various parts breaking, causing a loss in functionality and needed repairs within the operational budget.

A Capital Improvement Project of \$250,000 was approved in the Fiscal Year 2018 - 2019 budget to replace the furniture. On January 9, 2019 the City of Corona issued Request for Proposals (RFP) No. 19-014HC for replacement of the Public Safety Dispatch furniture consisting of eleven (11) custom-made 911 Dispatch workstations. Standard office furniture is not acceptable for the dispatch center. The furniture must be made of durable materials that has proven sustainability in the 24-hour use environment of a 911 Dispatch Center. The request for proposals closed on February 20, 2019 and the City received three (3) proposals. Those proposals were all rejected by Purchasing because of licensing requirements that were not met on any of the proposals. After further review and research performed, it was discovered that the licensing that was requested on the RFP is not required and confirmed by the California Contractor State License Board. It was determined the “sale of installation of finished products that do not become a fixed part of the structure” is exempt from the licensing requirement. During this time, Public Safety Dispatch determined that the Watson Furniture specifications met their needs and expectations best and identified a competitive bid was performed, resulting in an award of the NASPO Contract #5715 with a 47.5% discount applicable to municipalities. The NASPO Contract #5715 is in effect until June 30, 2021. NASPO is a non-profit cooperative purchasing program that utilizes a competitive bid program for multiple award contracts and is led by US State Procurement Officers. It works similarly to General Services Administration (GSA), which is a government agency that develops multiple award schedule contracts. Watson Furniture provided the City with better than or equal pricing to NASPO Contract #5715. Taking into consideration the aforementioned information, we request approval of the Exception to Bid for the design, product and installation of the Dispatch Center’s furniture in the amount of \$197,955.73. Budget has been approved in the amount of \$250,000 for the Dispatch furniture project.

**COMMITTEE ACTION:**

Not applicable.

**STRATEGIC PLAN:**

This item supports the City Strategic Plan goal to Promote Public Safety: Protect our Residents and Businesses (a). Ensure adequate funding for police and fire services, (b). Ensure adequate funding

for facilities and equipment needed to support timely delivery of police and fire services to our community and (c). Ensure adequate funding for investments and improvement in infrastructure that support public safety.

**FISCAL IMPACT:**

Funding for the replacement of the Public Safety Dispatch furniture is available in the General Fund FY 2018-19 Capital Improvement Project, Replacement Dispatch Furniture.

Account Name	Fund	Account	Amount
Replacement of Dispatch Furniture	110	72570	\$ 250,000.00

**ENVIRONMENTAL ANALYSIS:**

No environmental review is required because the proposed action is not a project governed by the California Environmental Quality Act.

**PREPARED BY:** MICHELLE ADAMS, MANAGEMENT ANALYST II

**REVIEWED BY:** JERRY RODRIGUEZ, POLICE CAPTAIN

**REVIEWED BY:** GEORGE JOHNSTONE, CHIEF OF POLICE

**REVIEWED BY:** CITA LONGSWORTH, PURCHASING MANAGER

**REVIEWED BY:** KERRY D. EDEN, ASSISTANT CITY MANAGER/ADMINISTRATIVE SERVICES DIRECTOR

**REVIEWED BY:** MICHELE NISSEN, ASSISTANT CITY MANAGER

**SUBMITTED BY:** MITCHELL LANSDELL, ACTING CITY MANAGER

**Attachments:**

1. Watson Furniture Quote
2. NASPO ValuePoint Contract 5715

00015865

Corona 911 Dispatch Comm Center



**Watson Factory Rep** EDDIE CREEGAN  
**Address Line 1:**

**Specified For:** City of Corona  
**Address Line 1:** 400 S. Vicentia Ave. Suite 320

**City:**  
**State:**

**City:** Corona  
**State:** CA

**Sales Person:** Eddie Creegan  
**Phone Number:** 6023307091

**Contact Name:**  
**Phone Number:**  
**Email Address:**

**Project Summary:**

**\*\*NASPO CONTRACT: 5715, FREIGHT INCLUDED\*\***

Mercury Pro Consoles - 90" Primaires - 42" Screens (42" AFF), As Per Drawing + Optional Items

**Each Console Includes:**

Environmental Controls & In-Dash Power

Height Adjustable Monitor Array with Fully Articulating Monitor Arms

(1) USB Charger

(2) USB-A

Performance & Payment Bond is 2.5% of order total.

Installation based on live cut-over, one trip, 1st floor and includes prevailing wage requirements.

1. State and Local Taxes will apply unless proof of exemption is provided with the Purchase Order.
2. Deposit may be required with order; Net 30 days of Shipment of Product.
3. Chairs are for representational purposes only.
4. Completed Order consists of a signed Contract or Purchase Order, Signed Drawings, Signed Color Selection Sheet, and Deposit.
5. Change Order Fee (minimum \$500) may be applicable for changes after 5 business days of submission.
6. Pricing will be valid for four (4) months after receipt of Purchase Order. Any orders that have not been manufactured within this time frame may be subject to a price change.

<b>Quote Date</b> 6/10/2019	<b>Expiration Date</b> 9/10/2019	<b>Watson Account Manager:</b> Natalie Thorne
Watson Consoles 26246 Twelve Trees Lane NW Poulsbo WA 98370		<b>Watson Factory Rep Firm:</b> EDDIE CREEGAN
This Document is Confidential & Proprietary (C) 2017 Watson Furniture Group, Inc. All Rights Reserved		<b>Prepared By:</b> Grace Nieland
		<b>File Name:</b> Corona.01.cmdrw

# Mercury Quote + Optional Items

Project: Corona 911 Dispatch Comm Center

## Sold to

Company name: City of Corona  
Contact Person:  
Contact Phone:  
Contact Fax:

## Distributor

Company name: EDDIE CREEGAN  
Salesman: Eddie Creegan  
Salesman Phone: 6023307091  
Salesman Fax: 602-330-7091

# watson

26246 Twelve Trees Lane NW Poulsbo, WA 98370  
360.394.1300 watsonfurniture.com

#	Qty	Part Number	Description	Sell	Ext. Sell
1	11	149550-KIT	GROUNDING BAR, 1/4" x 2" 6", 10 HOLE KIT WITH INSULATORS AND MTG BRACKET	\$67.65	\$744.15
2	1	BICYCLE	MAGNE TRAINER DESK BIKE	\$210.00	\$210.00
3	1	HD6H153918L-N	MERCURY PRO HUB, 15"D x 39"W x 18"H, LEFT HAND, NO GROMMET	\$1,340.70	\$1,340.70
4	1	HD6H153918R-N	MERCURY PRO HUB, 15"D x 39"W x 18"H, RIGHT HAND, NO GROMMET	\$1,340.70	\$1,340.70
5	5	HD6H245118C	MERCURY PRO HUB, 24"D x 51"W x 18"H, CENTER	\$2,476.40	\$12,382.00
6	5	HD6H245118L-N	MERCURY PRO HUB, 24"D x 51"W x 18"H, LEFT HAND, NO GROMMET	\$1,525.20	\$7,626.00
7	5	HD6H245118R-N	MERCURY PRO HUB, 24"D x 51"W x 18"H, RIGHT HAND, NO GROMMET	\$1,525.20	\$7,626.00
8	11	HD6W3690D	MERCURY PRO WORKSURFACE WITH DEPTH ADJUSTMENT, 36"D x 90"W x 24-50"H, WITH CONTOUR EDGE, DUAL MONITOR ARRAY	\$5,202.90	\$57,231.90
9	2	HG6CD90	MERCURY CABLE BRIDGE, DOUBLE SIDED 23" D X 18"H, FOR A 90"W CONSOLE	\$750.30	\$1,500.60
10	7	HG6CS90N	MERCURY CABLE BRIDGE, SINGLE SIDED 12" D X 18"H, FOR A 90"W CONSOLE, NO GROMMET	\$414.10	\$2,898.70
11	22	HGA	MERCURY ARRAY	\$1,037.30	\$22,820.60
12	1	HGBS1518S-L	MERCURY BRIDGE SPACER, 15"D x 18"H SINGLE, LEFT HAND	\$34.44	\$34.44
13	1	HGBS1518S-R	MERCURY BRIDGE SPACER, 15"D x 18"H SINGLE, RIGHT HAND	\$34.44	\$34.44
14	1	HGBS2418D-C	MERCURY BRIDGE SPACER, 24"D x 18"H DUAL, CENTER	\$45.10	\$45.10
15	2	HGBS2418D-L	MERCURY BRIDGE SPACER, 24"D x 18"H DUAL, LEFT HAND	\$45.10	\$90.20
16	3	HGBS2418S-C	MERCURY BRIDGE SPACER, 24"D x 18"H SINGLE, CENTER	\$45.10	\$135.30
17	3	HGBS2418S-L	MERCURY BRIDGE SPACER, 24"D x 18"H SINGLE, LEFT HAND	\$45.10	\$135.30
18	3	HGBS2418S-R	MERCURY BRIDGE SPACER, 24"D x 18"H SINGLE, RIGHT HAND	\$45.10	\$135.30
19	5	HGSOCBKT42L	MERCURY OUTSIDE CORNER BRACKET, 42"H	\$17.22	\$86.10
20	5	HGSOCBKT42R	MERCURY OUTSIDE CORNER BRACKET, 42"H	\$17.22	\$86.10
21	2	HGSR3942F	MERCURY RETURN SCREEN, 39"W x 42"H, ALL FABRIC PANEL	\$328.00	\$656.00
22	15	HGSR5142F	MERCURY RETURN SCREEN, 51"W x 42"H, ALL FABRIC PANEL	\$344.40	\$5,166.00
23	9	HGSS9042F	MERCURY SPINE SCREEN, 90"W x 42"H, ALL FABRIC PANEL	\$533.00	\$4,797.00
24	5	HGSWIBKT42	MERCURY INSIDE CORNER BRACKET, 42"H	\$13.53	\$67.65
25	2	HHC1518	MERCURY HUB COVER, 15"D x 18"H	\$20.50	\$41.00
26	4	HMBOBD243024	MERCURY TEAM BASE, OPEN BOX DOOR, 24"D x 30"W x 24"H	\$852.80	\$3,411.20
27	1	HPPD244208R	MERCURY PERSONAL PALLET, WITH DRAWER, 24"D x 42"W x 8"H, RIGHT HAND	\$381.30	\$381.30
28	1	HPSDOB244218L	MERCURY PERSONAL STACKER, DOOR, OPEN BOX, 24"D x 42"W x 18"H, LEFT HAND	\$561.70	\$561.70
29	1	HPSDOB244218R	MERCURY PERSONAL STACKER, DOOR, OPEN BOX, 24"D x 42"W x 18"H, RIGHT HAND	\$561.70	\$561.70
30	5	HTB244224L	MERCURY TECHNOLOGY BASE, 24"D x 42"W x 24"H, LEFT HAND	\$1,238.20	\$6,191.00
31	6	HTB244224R	MERCURY TECHNOLOGY BASE, 24"D x 42"W x 24"H, RIGHT HAND	\$1,238.20	\$7,429.20
32	1	SNREC2983-7Z	SEVEN DESK, RECTANGLE, 29"D x 83"W	\$955.30	\$955.30
33	11	TGAHM-F	WATSON ACCESSORY MARKERBOARD (FOR FABRIC PANEL)	\$36.90	\$405.90
34	1	TREADMILL	LIFESPAN UNDER DESK TREADMILL	\$1,000.00	\$1,000.00
35	11	TXXTECHUSB-CHG	TECH LINK, USB CHARGER INSERT	\$62.32	\$685.52
36	22	TXXTECHUSB15	TECH LINK, USB INSERT (TYPE A), FEMALE / FEMALE WALL PLATE COUPLER - Black, 15Ft	\$18.04	\$396.88
37	3	ZS3LF203642	ZO STORAGE, 3 LATERAL, 20"D x 36"W x 42"H	\$824.10	\$2,472.30

Subtotal Product \$151,683.28  
INSTALL-WAT \$22,996.00  
Live Cutover \$5,519.00  
Sales Tax (7.75 %) \$13,965.37  
Total \$194,163.65  
Performance & Payment Bond (2.5 %) \$3,792.08

# Mercury Quote + Optional Items

Project: Corona 911 Dispatch Comm Center

## Sold to

Company name: City of Corona  
Contact Person:  
Contact Phone:  
Contact Fax:

## Distributor

Company name: EDDIE CREEGAN  
Salesman: Eddie Creegan  
Salesman Phone: 6023307091  
Salesman Fax: 602-330-7091

# watson

26246 Twelve Trees Lane NW Poulsbo, WA 98370  
360.394.1300 [watsonfurniture.com](http://watsonfurniture.com)

#	Qty	Part Number	Description	Sell.	Ext. Sell.
---	-----	-------------	-------------	-------	------------

Grand Total \$197,955.73

# Project: Corona 911 Dispatch Comm Center

**watson**  
consoles

# Eddie Creegan

Natalie Thorne

Grace Nieland

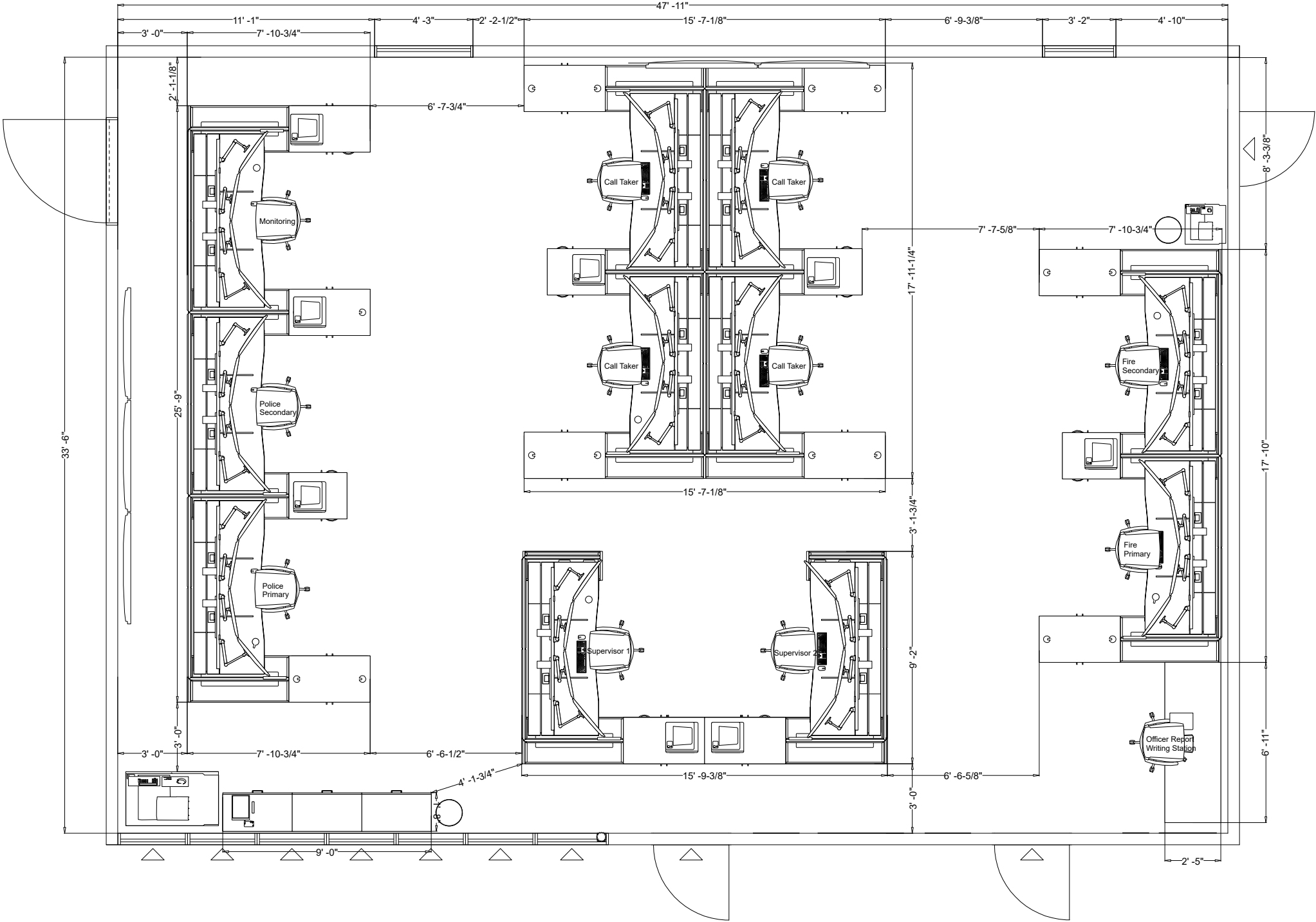
T123

REV 00: GN 02/06/2019  
Preliminary Drawings  
REV 01: NT 05/02/2019  
Removed Cup Holders  
from Optional Quote

# CP 01

## Full Room 2D

26246 Twelve Trees Lane NW  
Poulsbo, WA 98370  
www.watsondispatch.com  
800.426.1202 360.394.1300  
© 2016 Watson Furniture Group, Inc. All Rights Reserved



Scale:  $\frac{3}{16}" = 1'$

NOTE: Verify all building dimensions on-site prior to purchase or installation of product.  
Watson agrees to provide product Symbols that are correct. In turn, the agent or customer is responsible for providing accurate building plans, including dimensions, features, and information required for space planning and installation.

Approved By:

Name \_\_\_\_\_

Date \_\_\_\_\_

Title



Sales Rep:

Eddie Creegan

Account Manager:

Natalie Thorne

Project Designer:

Grace Nieland

T123

REV 00: GN 02/06/2019  
Preliminary Drawings  
REV 01: NT 05/02/2019  
Removed Cup Holders from  
Optional Quote

CP 01  
Full Room  
Rendering 1

NOTE: Verify all building dimensions on-site prior to purchase or installation of product. Watson agrees to provide product Symbols that are correct. In turn, the agent or customer is responsible for providing accurate building plans, including dimensions, features, and information required for space planning and installation.

Approved By:

Name

Date

Title



Mercury Pro Consoles - 90" Primaires - 42" Screens (42" AFF)

Project:Corona 911 Dispatch Comm Center

Corona.00.cmdrw



Sales Rep:

Eddie Creegan

Project Manager:

Natalie Thorne

Project Designer:

Grace Nieland

T23

REV 00: GN 02/06/2019  
Preliminary Drawings  
REV 01: NT 05/02/2019  
Removed Cup Holders  
from Optional Quote

CP 01  
Full Room  
Rendering 2

26246 Twelve Trees Lane NW  
Poulsbo, WA 98370  
www.watsondispatch.com  
800.426.1202 360.394.1300  
2016 Watson Furniture Group, Inc.; All Rights Reserved

NOTE: Verify all building dimensions on-site prior to purchase or installation of product.  
Watson agrees to provide product Symbols that are correct. In turn, the agent or customer is responsible for providing accurate building plans, including dimensions, features, and information required for space planning and installation.

Approved By:

Name

Date

Title



Sales Rep:

Eddie Creegan

Project Manager:

Natalie Thorne

Project Designer:

Grace Nieland

T23

REV 00: GN 02/06/2019  
Preliminary Drawings  
REV 01: NT 05/02/2019  
Removed Cup Holders from  
Optional Quote

CP 01  
Full Room  
Rendering 3

NOTE: Verify all building dimensions on-site prior to purchase or installation of product.  
Watson agrees to provide product Symbols that are correct. In turn, the agent or customer is responsible for providing accurate building plans, including dimensions, features, and information required for space planning and installation.

Approved By:

Name

Date

Title

26246 Twelve Trees Lane NW  
Poulsbo, WA 98370  
www.watsondispatch.com  
800.426.1202 360.394.1300  
2016 Watson Furniture Group, Inc. All Rights Reserved





Mercury Pro Consoles - 90" Primaires - 42" Screens (42" AFF)

Project: Corona 911 Dispatch Comm Center

Corona.00.cmdrw

**Watson Consoles**

**Sales Rep:**  
Eddie Creegan

**Project Manager:**  
Natalie Thorne

**Project Designer:**  
Grace Nieland

T23

REV 00: GN 02/06/2019  
Preliminary Drawings  
REV 01: NT 05/02/2019  
Removed Cup Holders from Optional Quote

CP 01  
Full Room  
Rendering 4



Sales Rep:

Eddie Creegan

Project Manager:

Natalie Thorne

Project Designer:

Grace Nieland

T23

REV 00: GN 02/06/2019  
Preliminary Drawings  
REV 01: NT 05/02/2019  
Removed Cup Holders  
from Optional Quote



CP 01  
Full Room  
Rendering 5

NOTE: Verify all building dimensions on-site prior to purchase or installation of product.  
Watson agrees to provide product Symbols that are correct. In turn, the agent or customer is responsible for providing accurate building plans, including dimensions, features, and information required for space planning and installation.

Approved By:

Name

Date

Title

26246 Twelve Trees Lane NW  
Poulsbo, WA 98370  
www.watsondispatch.com  
800.426.1202 360.394.1300  
2016 Watson Furniture Group, Inc.; All Rights Reserved



Sales Rep:

Eddie Creegan

Project Manager:

Natalie Thorne

Project Designer:

Grace Nieland

T23

REV 00: GN 02/06/2019

Preliminary Drawings

REV 01: NT 05/02/2019

Removed Cup Holders from  
Optional Quote



CP 01  
Full Room  
Rendering 6

NOTE: Verify all building dimensions on-site prior to purchase or installation of product. Watson agrees to provide product Symbols that are correct. In turn, the agent or customer is responsible for providing accurate building plans, including dimensions, features, and information required for space planning and installation.

Approved By:

Name

Date

Title

26246 Twelve Trees Lane NW  
Poulsbo, WA 98370  
www.watsondispatch.com  
800.426.1202 360.394.1300  
2016 Watson Furniture Group, Inc.; All Rights Reserved



Mercury Pro Consoles - 90" Primaires - 42" Screens (42" AFF)

Project:Corona 911 Dispatch Comm Center

Corona.00.cmdrw



Sales Rep:

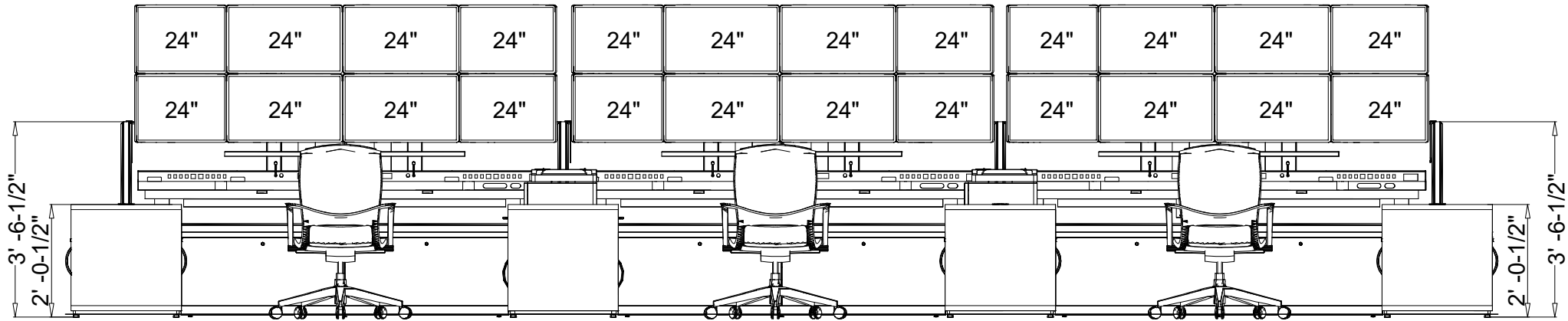
Eddie Creegan

Project Manager:

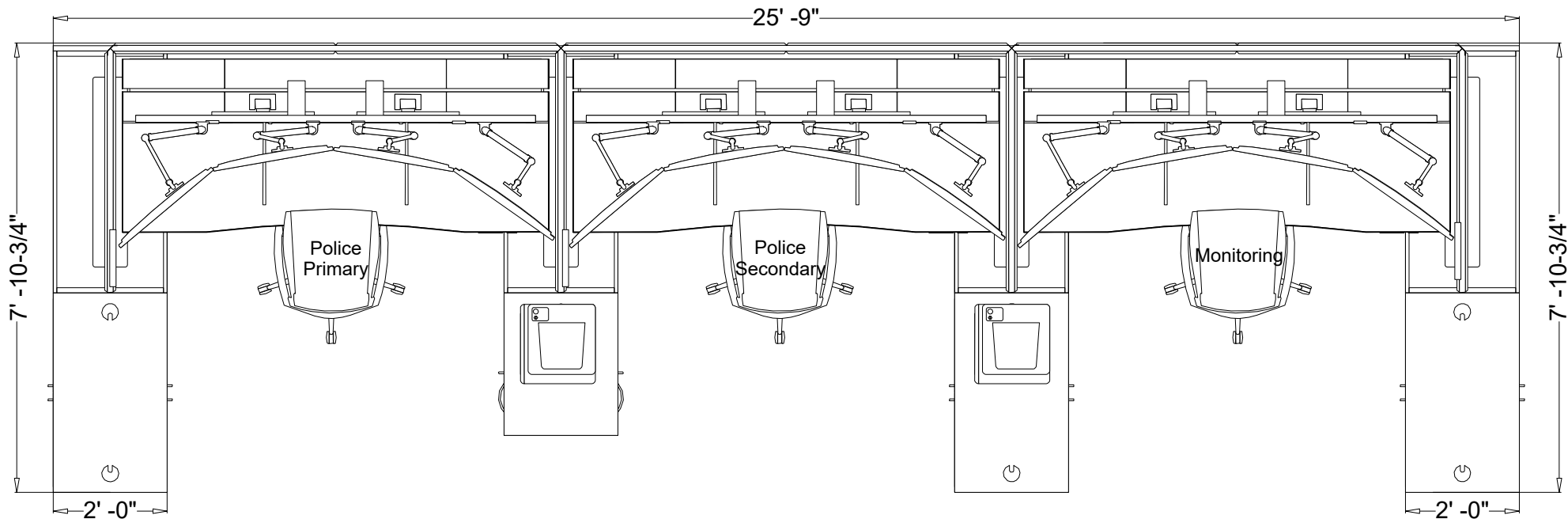
Natalie Thorne

Project Designer:

Grace Nieland



Scale: 3/8" = 1'



Scale: 3/8" = 1'

T123

REV 00: GN 02/06/2019  
Preliminary Drawings  
REV 01: NT 05/02/2019  
Removed Cup Holders  
from Optional Quote

CP 01  
Police Primary  
& Secondary  
Typical

NOTE: Verify all building dimensions on-site prior to purchase or installation of product.  
Watson agrees to provide product Symbols that are correct. In turn, the agent or customer is responsible for providing accurate building plans, including dimensions, features, and information required for space planning and installation.

Approved By:

Name

Date

Title

26246 Twelve Trees Lane NW  
Poulsbo, WA 98370  
www.watsondispatch.com  
800.426.1202 360.394.1300  
2016 Watson Furniture Group, Inc. All Rights Reserved

Mercury Pro Consoles - 90" Primaires - 42" Screens (42" AFF)

Project:Corona 911 Dispatch Comm Center

Corona.00.cmdrw



Sales Rep:

Eddie Creegan

Project Manager:

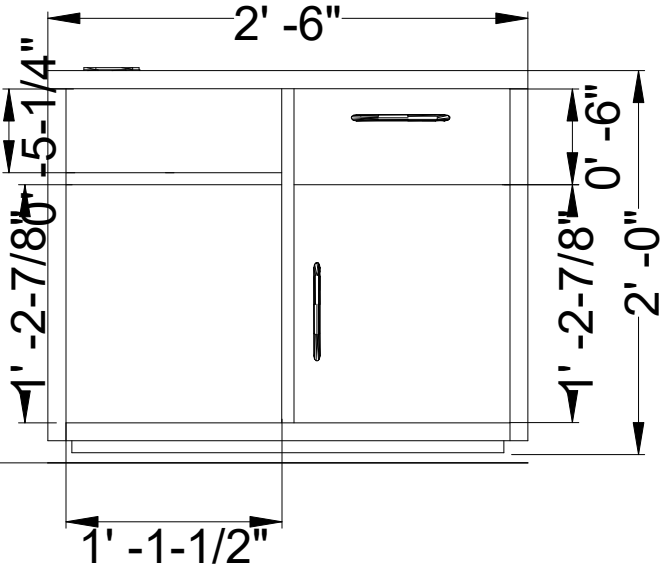
Natalie Thorne

Project Designer:

Grace Nieland

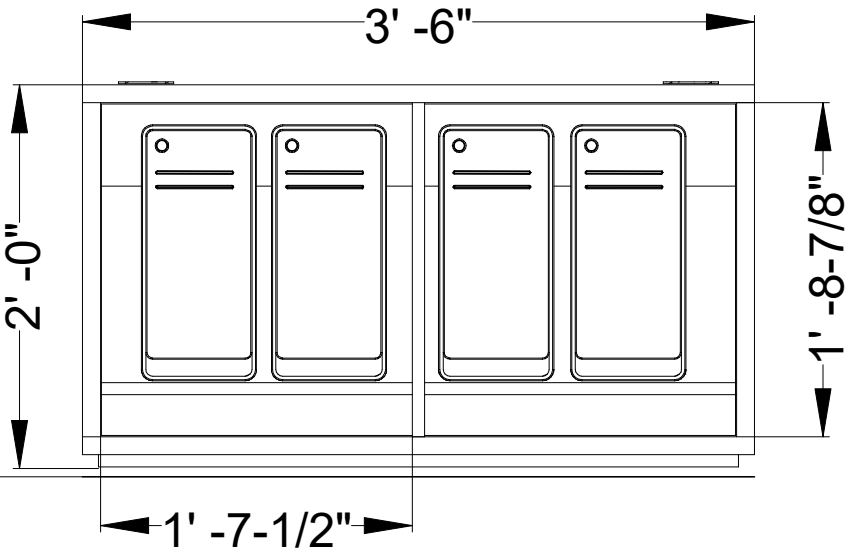
T3

REV 00: GN 02/06/2019  
Preliminary Drawings  
REV 01: NT 05/02/2019  
Removed Cup Holders  
from Optional Quote



Mercury 30" Open Box Door Team Storage Base

Scale: 1" = 1'



Mercury 42" Technology Base

Scale: 1" = 1'

CP 01  
Police Primary  
& Secondary  
Typical

NOTE: Verify all building dimensions on-site prior to purchase or installation of product. Watson agrees to provide product Symbols that are correct. In turn, the agent or customer is responsible for providing accurate building plans, including dimensions, features, and information required for space planning and installation.

Approved By:

Name

Date

Title

26246 Twelve Trees Lane NW  
Poulsbo, WA 98370  
www.watsondispatch.com  
800.426.1202 360.394.1300  
2016 Watson Furniture Group, Inc. All Rights Reserved



Sales Rep:

Eddie Creegan

Project Manager:

Natalie Thorne

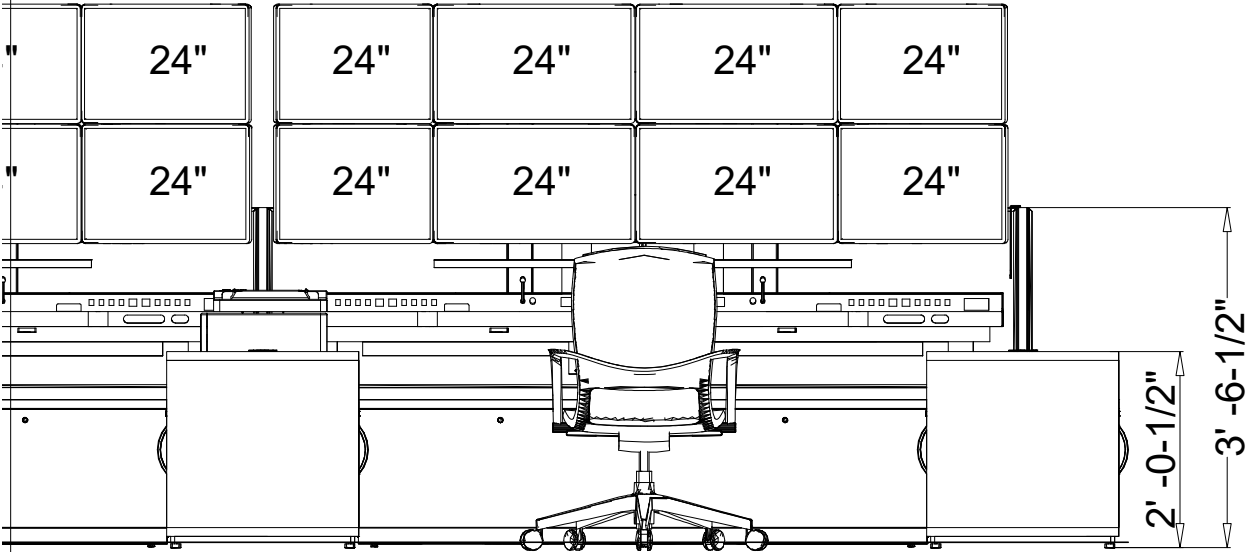
Project Designer:

Grace Nieland

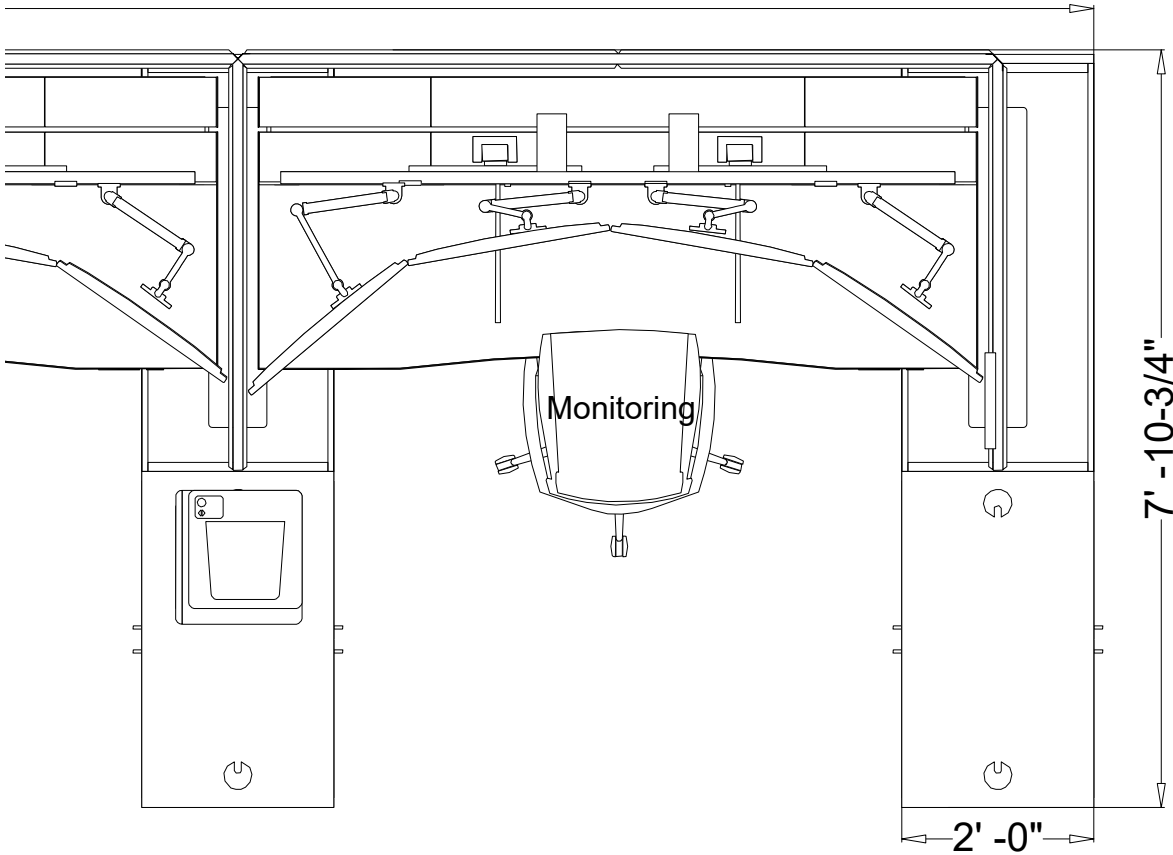
T123

REV 00: GN 02/06/2019  
Preliminary Drawings  
REV 01: NT 05/02/2019  
Removed Cup Holders  
from Optional Quote

CP 01  
Monitoring  
Typical



Scale: 1/2" = 1'



Scale: 1/2" = 1'

NOTE: Verify all building dimensions on-site prior to purchase or installation of product. Watson agrees to provide product Symbols that are correct. In turn, the agent or customer is responsible for providing accurate building plans, including dimensions, features, and information required for space planning and installation.

Approved By:

Name

Date

Title



Mercury Pro Consoles - 90" Primaires - 42" Screens (42" AFF)

Project:Corona 911 Dispatch Comm Center



Corona.00.cmdrw

Sales Rep:

Eddie Creegan

Project Manager:

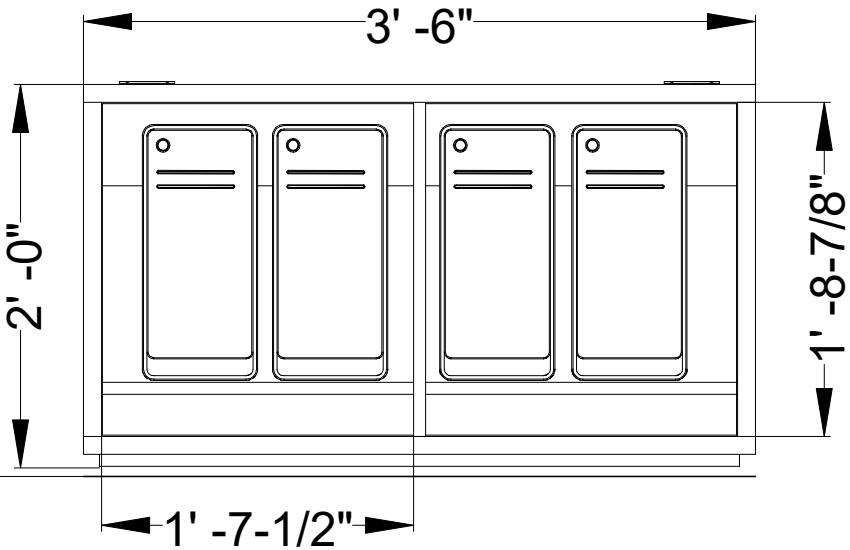
Natalie Thorne

Project Designer:

Grace Nieland

T3

REV 00: GN 02/06/2019  
Preliminary Drawings  
REV 01: NT 05/02/2019  
Removed Cup Holders  
from Optional Quote



Scale: 1" = 1'

CP 01  
Monitoring  
Typical  
Detail

NOTE: Verify all building dimensions on-site prior to purchase or installation of product.  
Watson agrees to provide product Symbols that are correct. In turn, the agent or customer is responsible for providing accurate building plans, including dimensions, features, and information required for space planning and installation.

Approved By:

Name

Date

Title

26246 Twelve Trees Lane NW  
Poulsbo, WA 98370  
www.watsondispatch.com  
800.426.1202 360.394.1300  
2016 Watson Furniture Group, Inc. All Rights Reserved

Mercury Pro Consoles - 90" Primaires - 42" Screens (42" AFF)

Project:Corona 911 Dispatch Comm Center



Corona.00.cmdrw

Sales Rep:

Eddie Creegan

Project Manager:

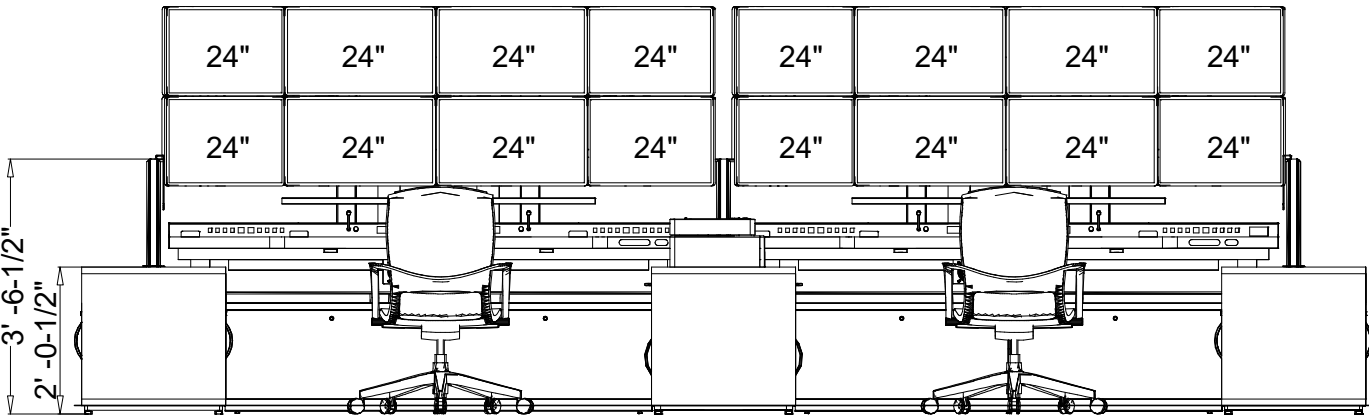
Natalie Thorne

Project Designer:

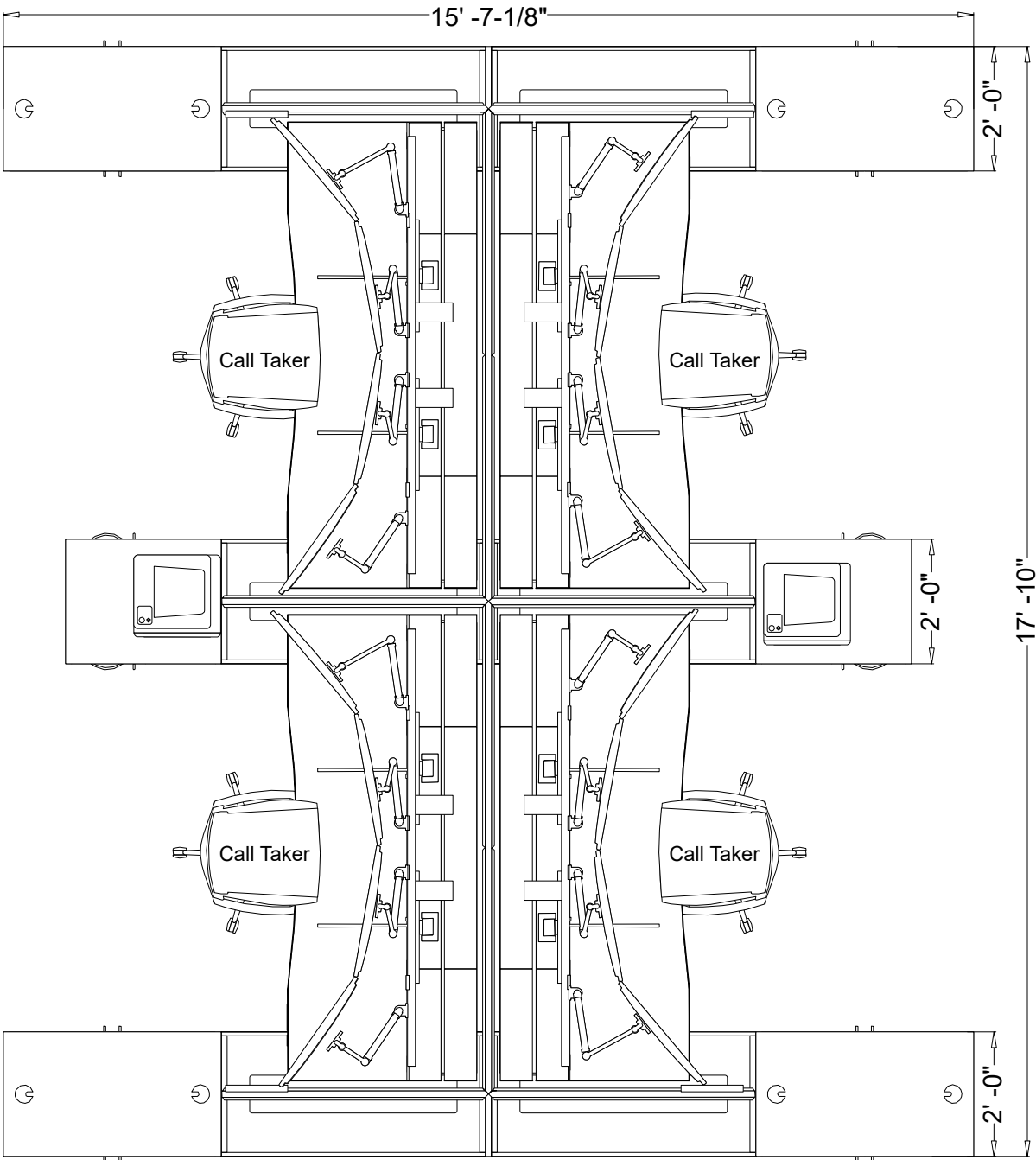
Grace Nieland

T123

REV 00: GN 02/06/2019  
Preliminary Drawings  
REV 01: NT 05/02/2019  
Removed Cup Holders  
from Optional Quote



Scale: 3/8" = 1'



Scale: 3/8" = 1'

CP 01  
Call Taker  
Typical

NOTE: Verify all building dimensions on-site prior to purchase or installation of product. Watson agrees to provide product Symbols that are correct. In turn, the agent or customer is responsible for providing accurate building plans, including dimensions, features, and information required for space planning and installation.

Approved By:

Name

Date

Title

26246 Twelve Trees Lane NW  
Poulsbo, WA 98370  
www.watsondispatch.com  
800.426.1202 360.394.1300  
2016 Watson Furniture Group, Inc. All Rights Reserved

Sales Rep:

Eddie Creegan

Project Manager:

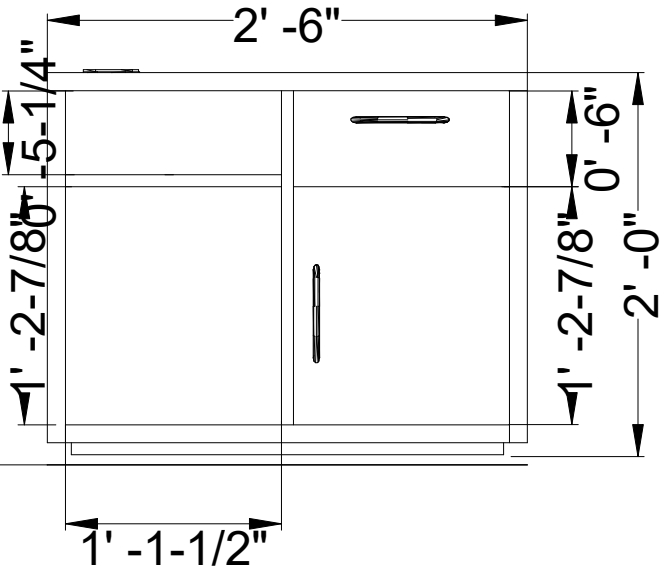
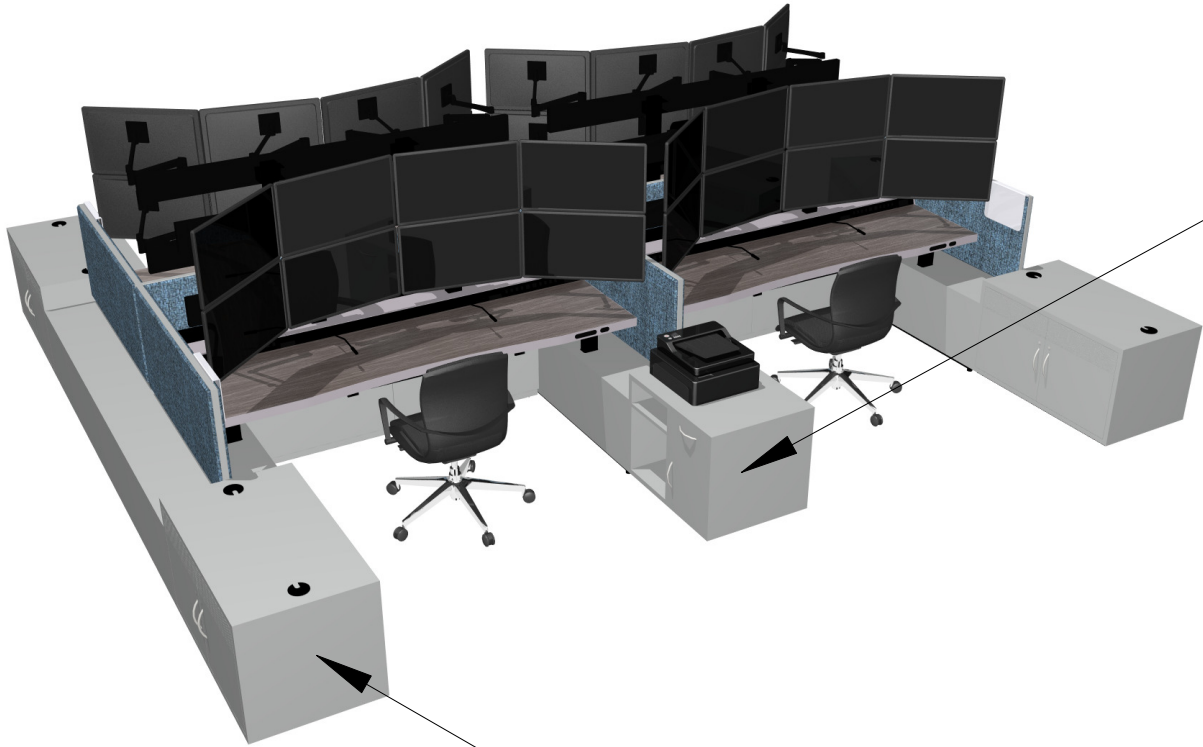
Natalie Thorne

Project Designer:

Grace Nieland

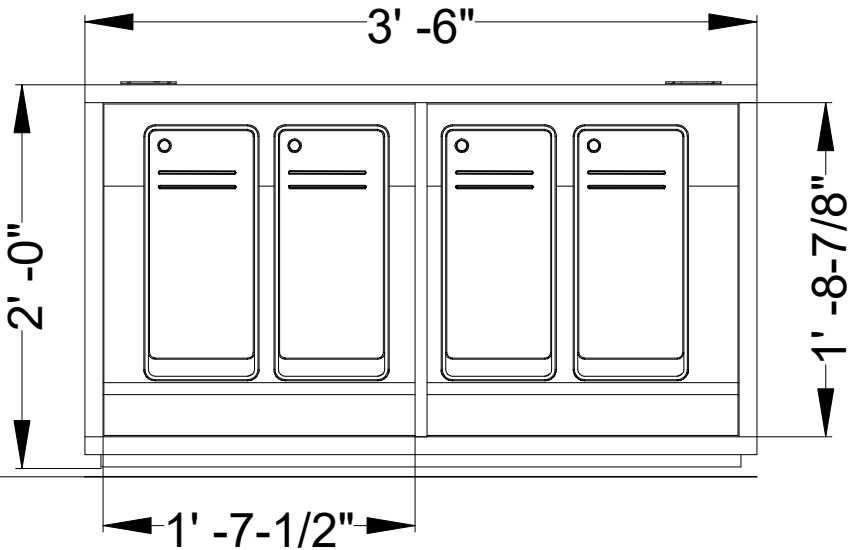
T3

REV 00: GN 02/06/2019  
Preliminary Drawings  
REV 01: NT 05/02/2019  
Removed Cup Holders  
from Optional Quote



Scale: 1" = 1'

Mercury 30" Open Box Door Team Storage Base



Scale: 1" = 1'

Mercury 42" Technology Base

CP 01  
Call Taker  
Typical  
Detail

NOTE: Verify all building dimensions on-site prior to purchase or installation of product. Watson agrees to provide product Symbols that are correct. In turn, the agent or customer is responsible for providing accurate building plans, including dimensions, features, and information required for space planning and installation.

Approved By:

Name

Date

Title

Mercury Pro Consoles - 90" Primaires - 42" Screens (42" AFF)

Project:Corona 911 Dispatch Comm Center



Sales Rep:

Eddie Creegan

Project Manager:

Natalie Thorne

Project Designer:

Grace Nieland

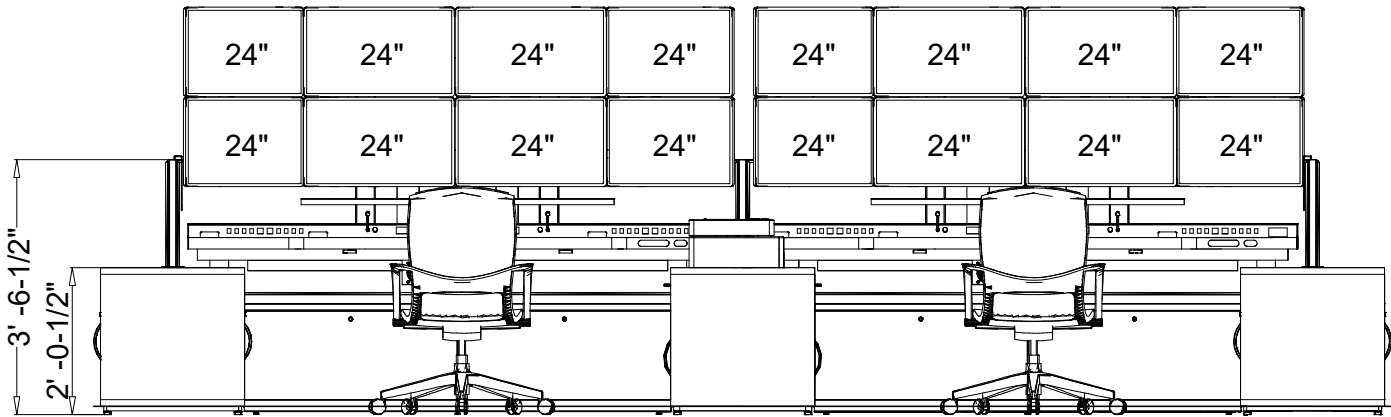
T123

REV 00: GN 02/06/2019  
Preliminary Drawings  
REV 01: NT 05/02/2019  
Removed Cup Holders  
from Optional Quote

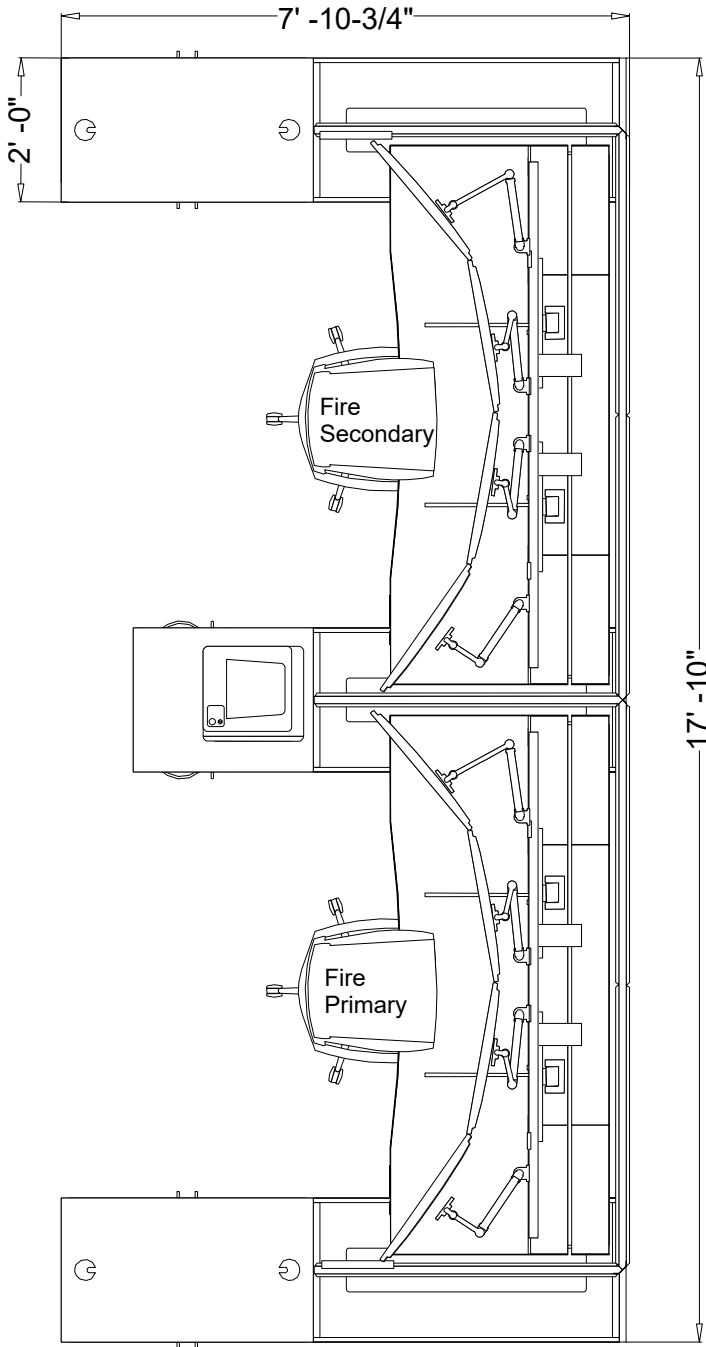
CP 01  
Fire Primary &  
Secondary  
Typical

26246 Twelve Trees Lane NW  
Poulsbo, WA 98370  
www.watsondispatch.com  
800.426.1202 360.394.1300  
2016 Watson Furniture Group, Inc. All Rights Reserved

Corona.00.cmdrw



Scale: 3/8" = 1'



Scale: 3/8" = 1'

NOTE: Verify all building dimensions on-site prior to purchase or installation of product.  
Watson agrees to provide product Symbols that are correct. In turn, the agent or customer is responsible for providing accurate building plans, including dimensions, features, and information required for space planning and installation.

Approved By:

Name

Date

Title



Mercury Pro Consoles - 90" Primaires - 42" Screens (42" AFF)

Project:Corona 911 Dispatch Comm Center

Corona.00.cmdrw



Sales Rep:

Eddie Creegan

Project Manager:

Natalie Thorne

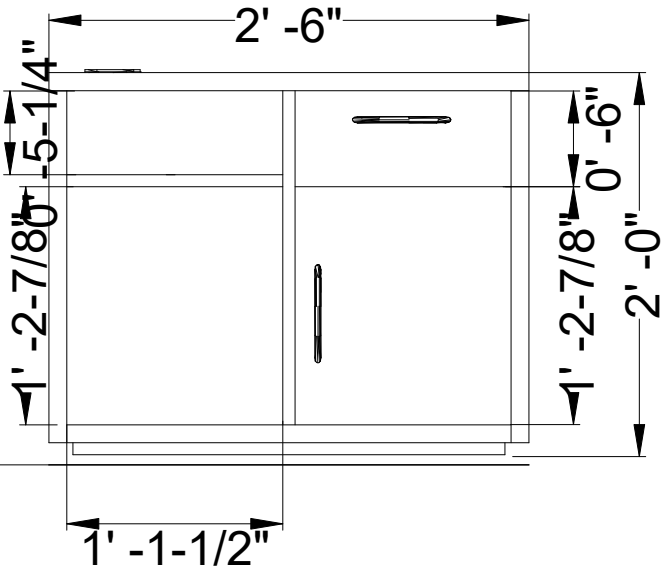
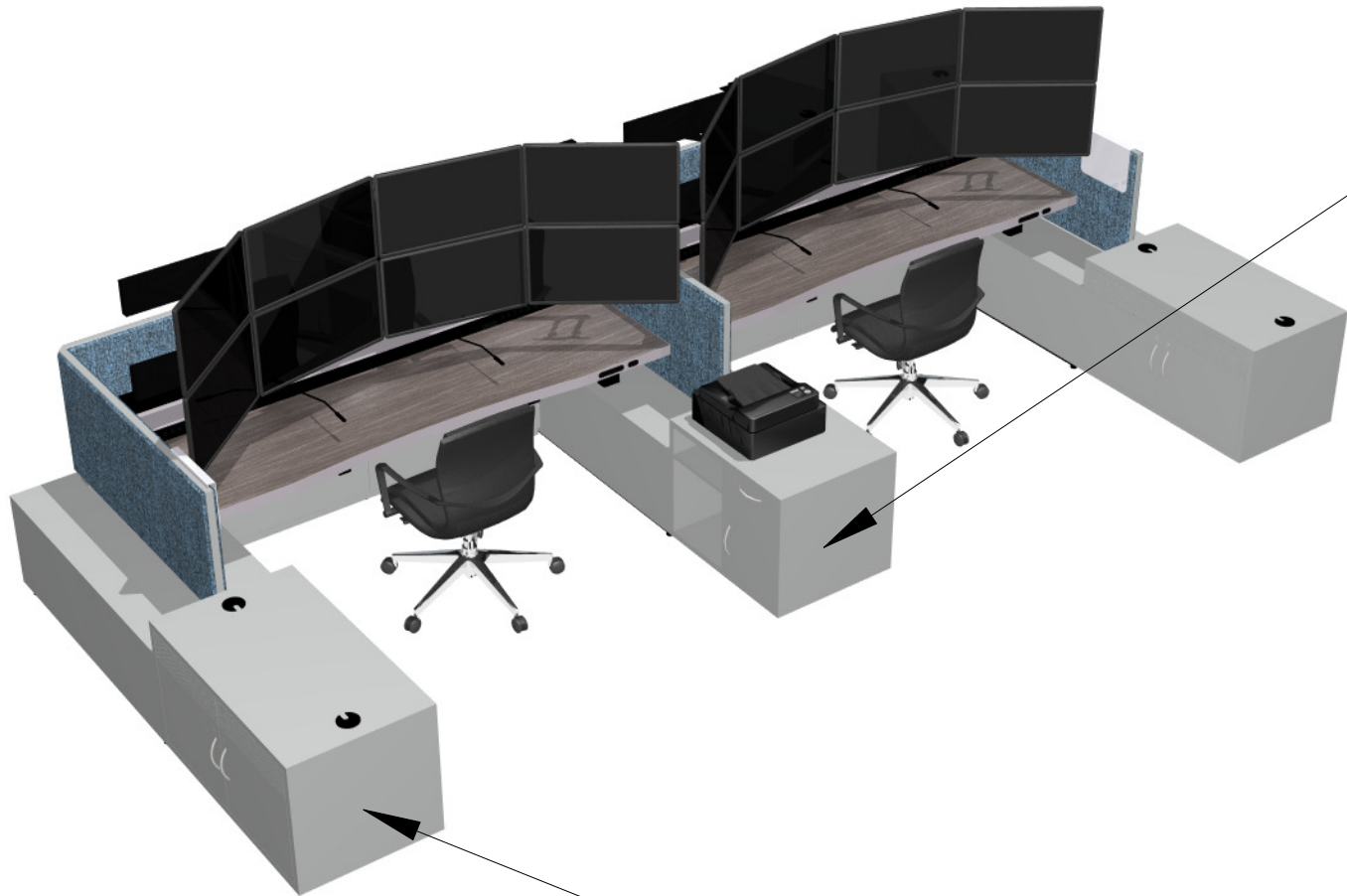
Project Designer:

Grace Nieland

T3

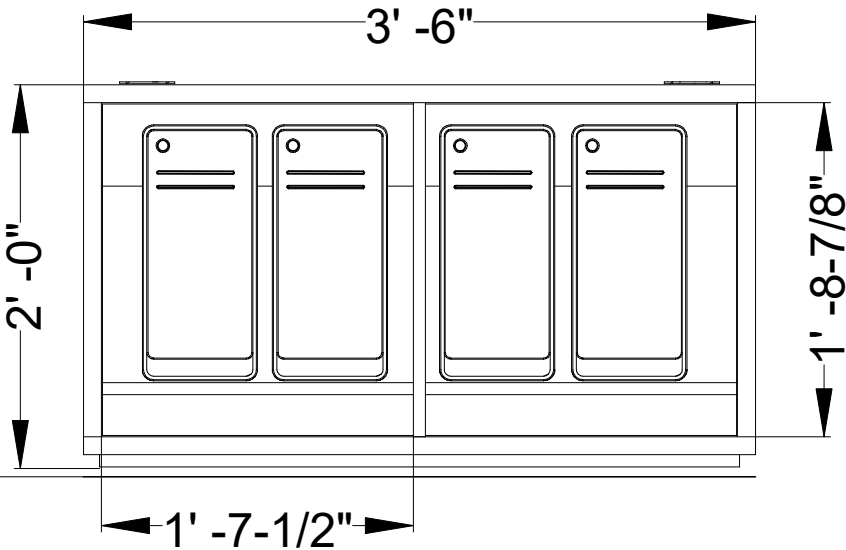
REV 00: GN 02/06/2019  
Preliminary Drawings  
REV 01: NT 05/02/2019  
Removed Cup Holders  
from Optional Quote

CP 01  
Fire Primary &  
Secondary  
Typical  
Detail



Scale: 1" = 1'

Mercury 30" Open Box Door Team Storage Base



Scale: 1" = 1'

Mercury 42" Technology Base

NOTE: Verify all building dimensions on-site prior to purchase or installation of product. Watson agrees to provide product Symbols that are correct. In turn, the agent or customer is responsible for providing accurate building plans, including dimensions, features, and information required for space planning and installation.

Approved By: \_\_\_\_\_  
Name \_\_\_\_\_ Date \_\_\_\_\_ Title \_\_\_\_\_

Sales Rep:

Eddie Creegan

Project Manager:

Natalie Thorne

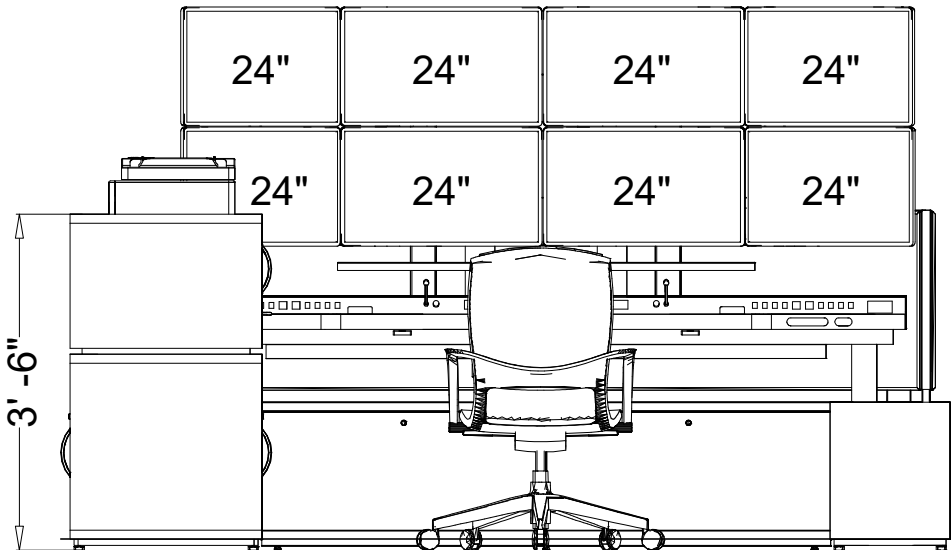
Project Designer:

Grace Nieland

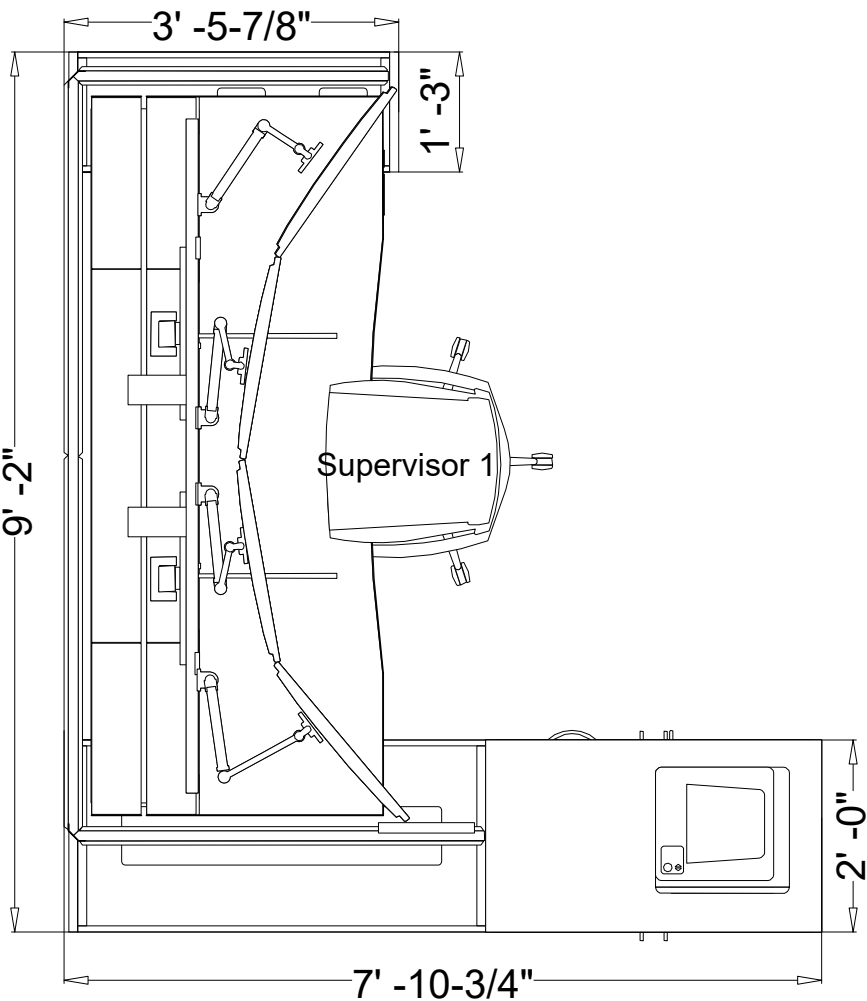
T123

REV 00: GN 02/06/2019  
Preliminary Drawings  
REV 01: NT 05/02/2019  
Removed Cup Holders  
from Optional Quote

CP 01  
Supervisor



Scale: 1/2" = 1'



Scale: 1/2" = 1'

NOTE: Verify all building dimensions on-site prior to purchase or installation of product. Watson agrees to provide product Symbols that are correct. In turn, the agent or customer is responsible for providing accurate building plans, including dimensions, features, and information required for space planning and installation.

Approved By:

Name

Date

Title

Mercury Pro Consoles - 90" Primaires - 42" Screens (42" AFF)

Project:Corona 911 Dispatch Comm Center

Corona.00.cmdrw



Sales Rep:

Eddie Cregan

Project Manager:

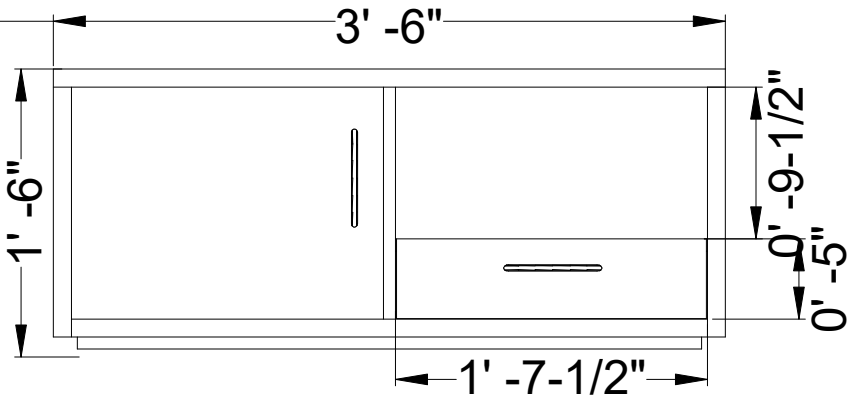
Natalie Thorne

Project Designer:

Grace Nieland

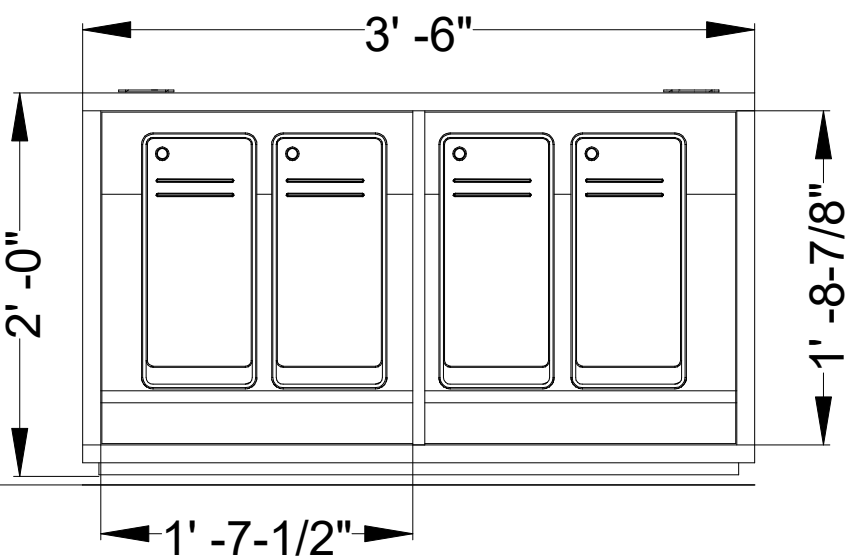
T3

REV 00: GN 02/06/2019  
Preliminary Drawings  
REV 01: NT 05/02/2019  
Removed Cup Holders  
from Optional Quote



Scale: 1" = 1'

Mercury 42" Door Open Box Personal Storage Stacker



Scale: 1" = 1'

Mercury 42" Technology Base

CP 01  
Supervisor  
Typical  
Detail

NOTE: Verify all building dimensions on-site prior to purchase or installation of product. Watson agrees to provide product Symbols that are correct. In turn, the agent or customer is responsible for providing accurate building plans, including dimensions, features, and information required for space planning and installation.

Approved By: \_\_\_\_\_  
Name \_\_\_\_\_ Date \_\_\_\_\_ Title \_\_\_\_\_

Stationary 29"D x 83"W Seven Desk

Project:Corona 911 Dispatch Comm Center

Corona.00.cmdrw



Sales Rep:

Eddie Creegan

Project Manager:

Natalie Thorne

Project Designer:

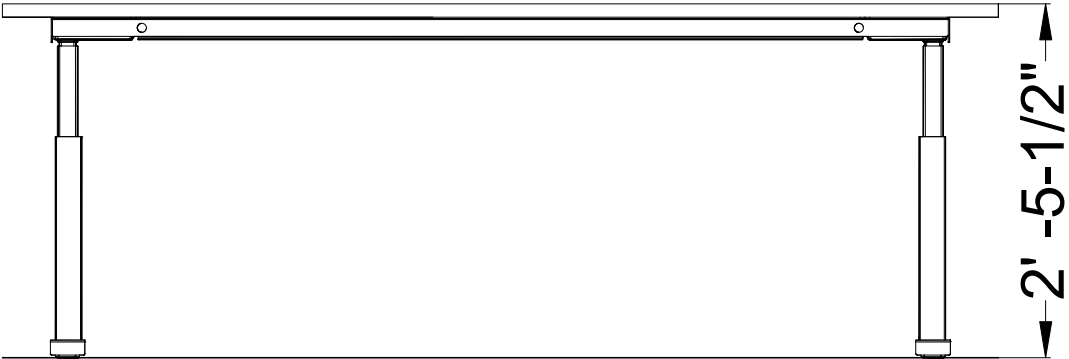
Grace Nieland

T3

REV 00: GN 02/06/2019  
Preliminary Drawings  
REV 01: NT 05/02/2019  
Removed Cup Holders  
from Optional Quote

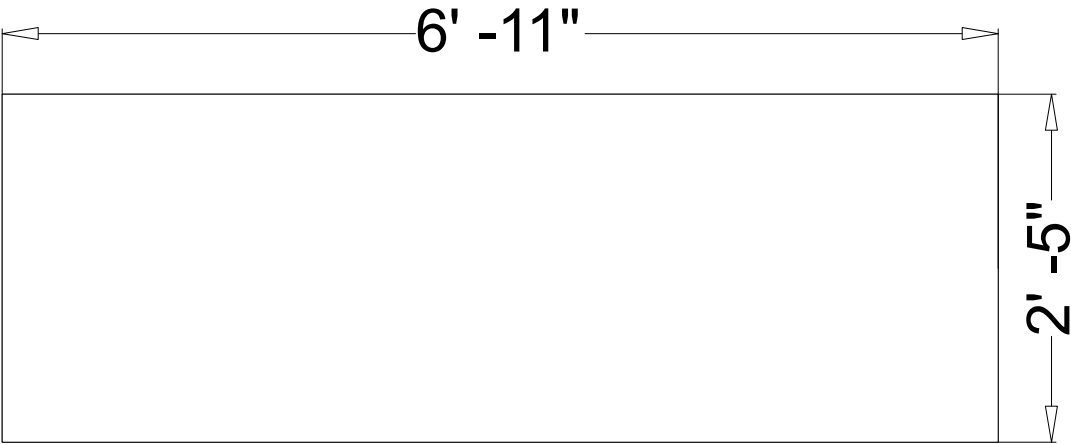
CP 01  
Officer Report  
Writing Station  
Typical  
Detail

26246 Twelve Trees Lane NW  
Poulsbo, WA 98370  
www.watsondispatch.com  
800.426.1202 360.394.1300  
2016 Watson Furniture Group, Inc. All Rights Reserved



Scale: 3/4" = 1'

Elevation View



Scale: 3/4" = 1'

Plan View



NOTE: Verify all building dimensions on-site prior to purchase or installation of product. Watson agrees to provide product Symbols that are correct. In turn, the agent or customer is responsible for providing accurate building plans, including dimensions, features, and information required for space planning and installation.

Approved By:

Name Date Title



ZO 4 Drawer Lateral File (OPTIONAL)



Project:Corona 911 Dispatch Comm Center

Corona.00.cmdrw



Sales Rep:

Eddie Creegan

Project Manager:

Natalie Thorne

Project Designer:

Grace Nieland

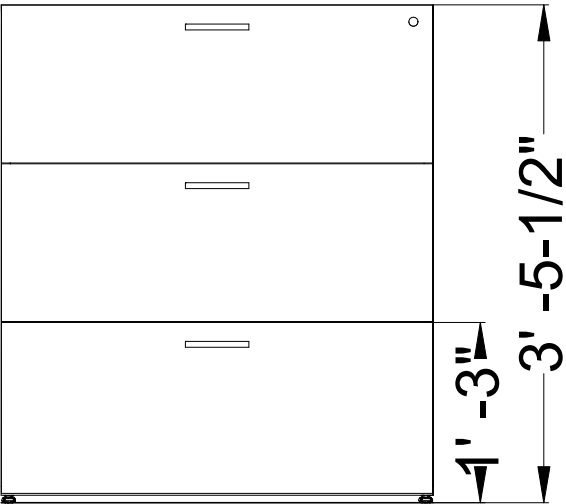
T3

REV 00: GN 02/06/2019  
Preliminary Drawings  
REV 01: NT 05/02/2019  
Removed Cup Holders  
from Optional Quote

CP 01  
Lateral File  
Typical  
Detail

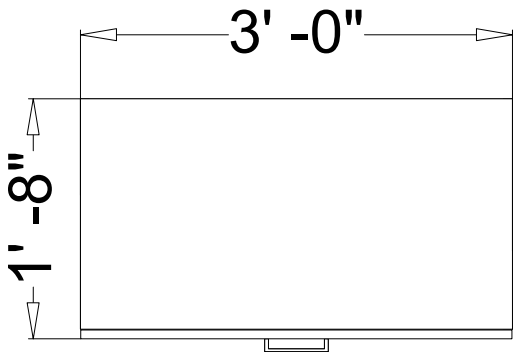
NOTE: Verify all building dimensions on-site prior to purchase or installation of product.  
Watson agrees to provide product Symbols that are correct. In turn, the agent or customer is responsible for providing accurate building plans, including dimensions, features, and information required for space planning and installation.

Elevation View



Scale: 3/4" = 1'

Plan View



Scale: 3/4" = 1'

Approved By:

Name \_\_\_\_\_ Date \_\_\_\_\_ Title \_\_\_\_\_

Mercury Pro Consoles - 90" Primaires - 42" Screens (42" AFF)

Project:Corona 911 Dispatch Comm Center



Corona.00.cmdrw

Sales Rep:

Eddie Creegan

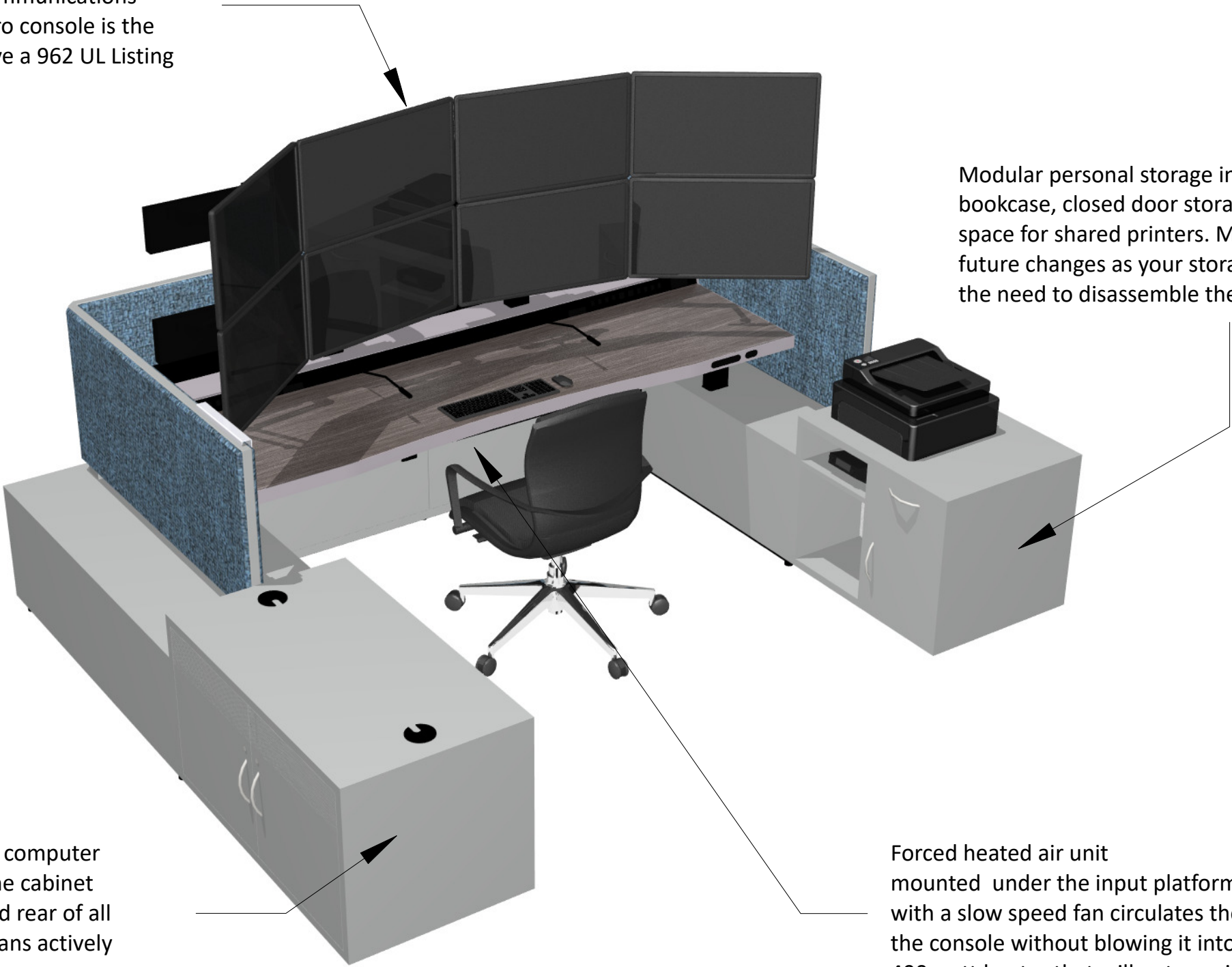
Project Manager:

Natalie Thorne

Project Designer:

Grace Nieland

Mercury Pro Dispatch Console designed specifically for 24/7 operations in an Emergency Communications Center environment. The Mercury Pro console is the only console on the market to achieve a 962 UL Listing as a complete assembly.



Modular personal storage includes drawer, open bookcase, closed door storage and additional work space for shared printers. Modular design allows for future changes as your storage needs change without the need to disassemble the complete console.

Outboard technology cabinets store computer technology. Doors on both side of the cabinet allow for easy access to the front and rear of all technology. Door mounted cooling fans actively cool technology. Technology cabinet is modular in design for ease of reconfiguration and upgrading as your technology needs change.

Forced heated air unit mounted under the input platform. Ceramic heater with a slow speed fan circulates the heated air under the console without blowing it into the room. This is a 400 watt heater that will not require a separate electrical circuit to operate all the console heaters in the room.

T23

REV 00: GN 02/06/2019  
Preliminary Drawings  
REV 01: NT 05/02/2019  
Removed Cup Holders  
from Optional Quote

CP 01  
Mercury  
Console

NOTE: Verify all building dimensions on-site prior to purchase or installation of product. Watson agrees to provide product Symbols that are correct. In turn, the agent or customer is responsible for providing accurate building plans, including dimensions, features, and information required for space planning and installation.

Approved By:

Name

Date

Title

26246 Twelve Trees Lane NW  
Poulsbo, WA 98370  
www.watsondispatch.com  
800.426.1202 360.394.1300  
2016 Watson Furniture Group, Inc. All Rights Reserved

Sales Rep:

Eddie Creegan

Project Manager:

Natalie Thorne

Project Designer:

Grace Nieland

(4) Lifting columns with a dual directional anti-collusion system insure smooth, stable and stable operation.

(2) gooseneck mounted LED task lights mounted on the console dashboard directly in front of the user. Each light has an independent dimmer switch and a red light option for night shifts.



Sit-to-stand input surface is connected to the console undercarriage with 4 lifting columns to insure maximum stability. Input surface is adjustable independent of the monitor system. Input surface is mounted to a tubular steel frame to insure no surface warping.

Electronic console controls are flush mounted on the front edge of the input platform to insure compliance with the ADA requirements. Any console controls mounted to or located on the top of the surface do not meet this requirement.

T23

REV 00: GN 02/06/2019  
Preliminary Drawings  
REV 01: NT 05/02/2019  
Removed Cup Holders  
from Optional Quote

CP 01  
Mercury  
Console

NOTE: Verify all building dimensions on-site prior to purchase or installation of product. Watson agrees to provide product Symbols that are correct. In turn, the agent or customer is responsible for providing accurate building plans, including dimensions, features, and information required for space planning and installation.

Approved By:

Name

Date

Title

26246 Twelve Trees Lane NW  
Poulsbo, WA 98370  
www.watsondispatch.com  
800.426.1202 360.394.1300  
2016 Watson Furniture Group, Inc. All Rights Reserved



Sales Rep:

Eddie Creegan

Project Manager:

Natalie Thorne

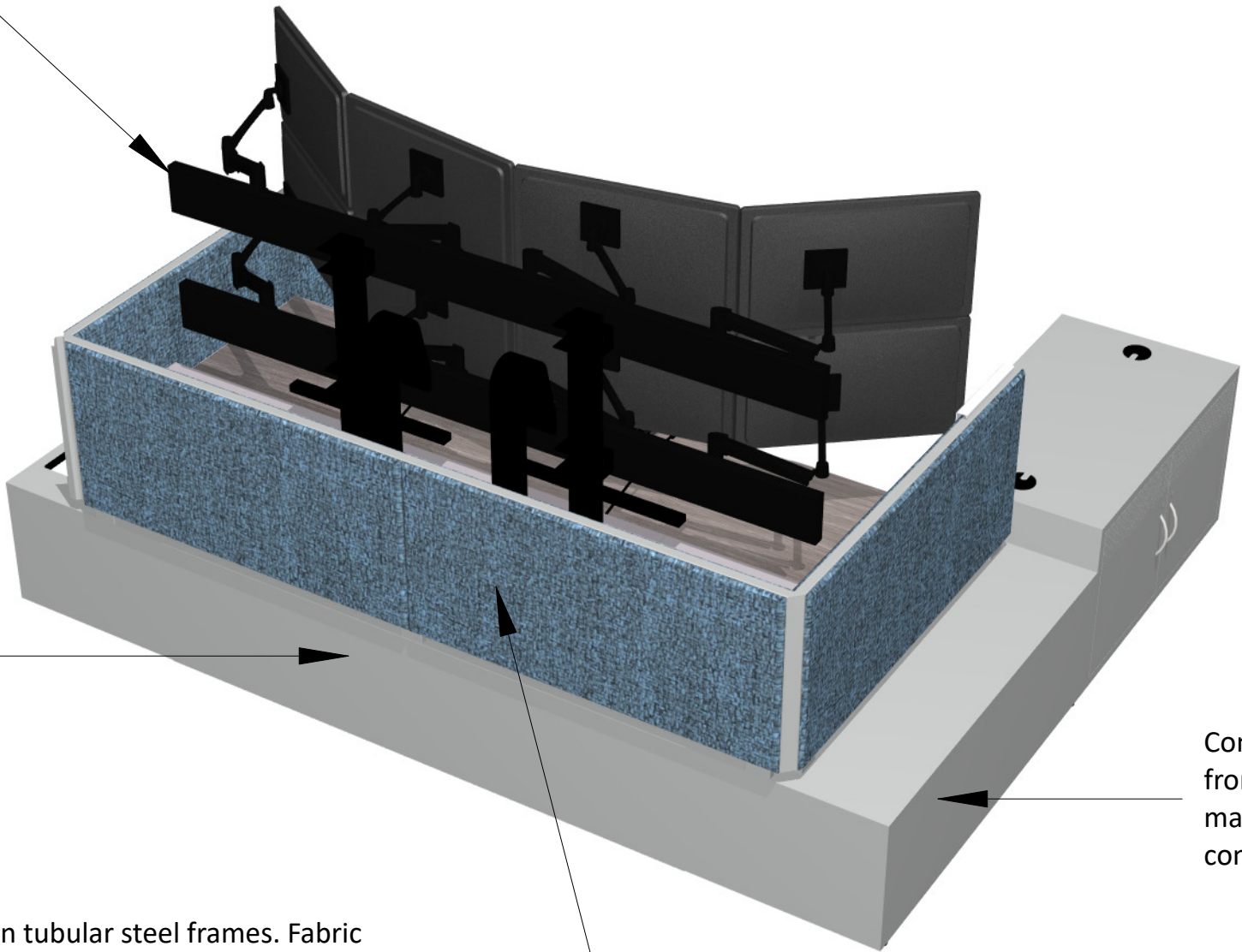
Project Designer:

Grace Nieland

T23

REV 00: GN 02/06/2019  
Preliminary Drawings  
REV 01: NT 05/02/2019  
Removed Cup Holders  
from Optional Quote

Monitor array system provides electronic height adjustability independent of the input surface. Cable management is provided for all monitor cables. Monitor power is provided at the desktop level eliminating the need for running cables to floor power locations.



Cable bridge connects the console hubs to allow for cable management from one side of the console to the other

Acoustic fabric covered solid core panels on tubular steel frames. Fabric panels are designed for ease of future color upgrading as your room colors change. This can be accomplished without the need to dis-assemble the consoles. Panels are available in 36", 42", 48" 54" and 60" heights. Mixed panel heights are also available.

Console hubs provide power/data access from the floor or wall to the cable management system in the foundation of console.

CP 01  
Mercury  
Console

NOTE: Verify all building dimensions on-site prior to purchase or installation of product. Watson agrees to provide product Symbols that are correct. In turn, the agent or customer is responsible for providing accurate building plans, including dimensions, features, and information required for space planning and installation.

Approved By:

Name

Date

Title



Mercury Pro Consoles - 90" Primaires - 42" Screens (42" AFF)

Project:Corona 911 Dispatch Comm Center



Corona.00.cmdrw

Sales Rep:

Eddie Creegan

Project Manager:

Natalie Thorne

Project Designer:

Grace Nieland

T23

REV 00: GN 02/06/2019  
Preliminary Drawings  
REV 01: NT 05/02/2019  
Removed Cup Holders  
from Optional Quote

CP 01  
Mercury  
Console

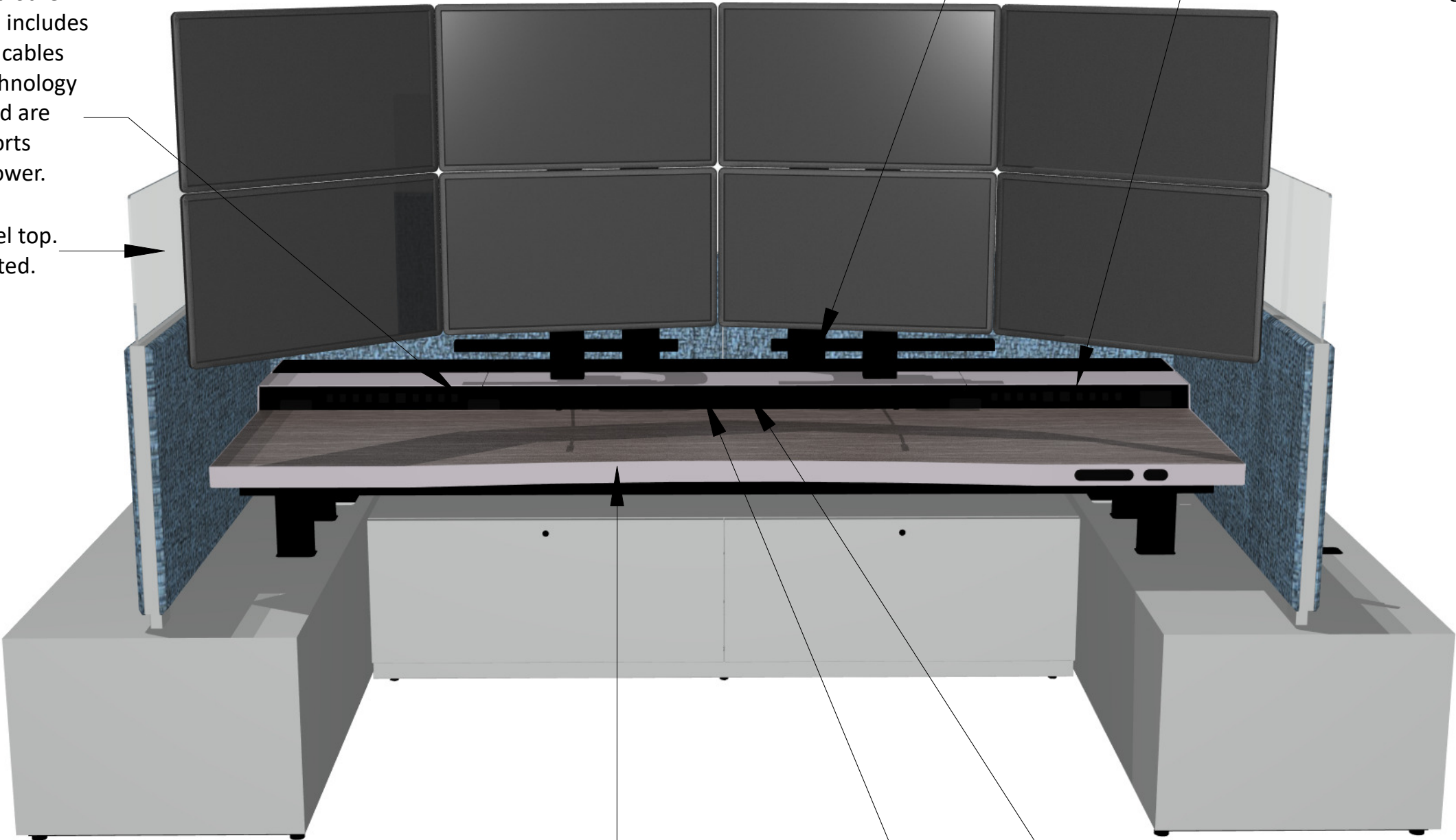
26246 Twelve Trees Lane NW  
Poulsbo, WA 98370  
www.watsondispatch.com  
800.426.1202 360.394.1300  
2016 Watson Furniture Group, Inc. All Rights Reserved

10 user defined technology ports provide quick disconnect access for keyboard, mouse and other technology. Proposal includes (2) USB-A ports with cables that reach to the technology cabinet. Also included are dual USB charging ports connected to only power.

Optional Acrylic panel top. Available clear or tinted.

(2) 18" LED strip lights mounted behind the monitors provide ambient light to the desktop without causing glare on computer screens.

Dual 110 power outlets provide power for desktop items such as wireless headset chargers and laptops.



Input platform can be moved in/out to allow for monitor focal adjustment. Pull the (2) Locks under the front edge of the input platform to move the surface and release the locks to lock the surface at the desired monitor focal depth.

Cooling fans mounted in front of the user and off the desktop to maximize cooling without blowing papers on the desktop.

Environment controls mounted in reach of the user but out of the way to provide a clear work space for the user.

NOTE: Verify all building dimensions on-site prior to purchase or installation of product. Watson agrees to provide product Symbols that are correct. In turn, the agent or customer is responsible for providing accurate building plans, including dimensions, features, and information required for space planning and installation.

Approved By:

Name

Date

Title

# WATSON FURNITURE GROUP



## NASPO ValuePoint Contract

Contract Number: 5715

Contract Period: 07/01/2016 – 06/30/2021

Socio-Economics: Small Business

Price List: Mercury & Relay Catalogs 10/2015

Synergy Catalog 11/2015

Watson Comprehensive Catalog 4/2016

Watson Furniture Group  
26246 Twelve Trees Lane NW  
Poulsbo, WA 98370  
Phone: 360-394-1300  
Fax: 360-394-1322

## ORDERING INFORMATION

### WATSON DISPATCH

Watson Dispatch includes:

Mercury, Relay, Relay Bench, Synergy 1, Synergy 2, Synergy 3

---

## DISCOUNT FROM LIST PRICE

### WATSON DISPATCH PRODUCTS

47.5% Discount: \$1 and up

### INSTALLATION

Quoted per job (site and conditions vary)

### CLEANING SERVICES BI-ANNUAL

Service NET \$546.00 / Console (31.75% discount off list)

---

## GEOGRAPHIC COVERAGE:

48 Contiguous States, Washington DC and Port of  
Exportation for Alaska, Hawaii and Puerto Rico

---

## POINT OF PRODUCTION:

Poulsbo, Washington

---

## PAYMENT TERMS:

Net 30

---

## GOVERNMENT CREDIT CARDS:

Accepted For All Purchase Thresholds

---

## FOREIGN ITEMS:

None

---

## TIME OF DELIVERY:

45-60 Days ARO

---

## EXPEDITED DELIVERY:

N/A

---

## OVERNIGHT & 2-DAY DELIVERY

N/A

---

## URGENT REQUIREMENTS:

Inquire with Watson Factory at (800) 426-1202.

---

**watson**

26246 Twelve Trees Lane NW, Poulsbo, Washington 98370  
360.394.1300 [www.watsonfurniture.com](http://www.watsonfurniture.com)

<b>F.O.B. POINT (Freight):</b>	FOB Destination for all points within the contiguous United States, Washington DC and Port of Exportation for Alaska, Hawaii, and Puerto Rico.
<b>Freight Charges Apply:</b>	No
<b>Small Order Handling Fee:</b>	No
<b>ORDERING ADDRESS:</b>	Watson Furniture Group 26246 Twelve Trees Lane NW Poulsbo, WA 98370
<b>ORDERING PROCEDURES:</b>	All orders must be submitted in writing. Watson does not accept an order until the order is verified complete by a Watson Project Manager, which will include price information and anticipated arrival date. The Order Confirmation of the contract between the customer and Watson Furniture Group.
<b>REMIT TO ADDRESS:</b>	Watson Furniture Group 26246 Twelve Trees Lane NW Poulsbo, WA 98370
<b>WARRANTY PROVISIONS:</b>	Lifetime (contact Watson Factory for more details)
<b>EXPORT PACKAGING CHARGES:</b>	Contact Contractor for Export Packaging
<b>TERMS &amp; CONDITIONS OF GOVERNMENT PURCHASE CARD ACCEPTANCE:</b>	None
<b>TERMS &amp; CONDITIONS OF RENTAL MAINTENANCE AND REPAIR:</b>	None
<b>TERMS &amp; CONDITIONS OF INSTALLATION:</b>	All units are shipped KD (disassembled). Contact Contractor for pricing and scheduling of Installation.
<b>TERMS &amp; CONDITIONS OF REPAIR PARTS:</b>	N/A – Contact Contractor
<b>LIST OF SERVICES:</b>	N/A
<b>LIST OF PARTICIPATING DEALERS:</b>	Please contact Watson factory at (800) 426-1202.
<b>PREVENTATIVE MAINTANENCE:</b>	N/A
<b>ENVIRONMENTAL ATTRIBUTES:</b>	Yes. Please contact Watson factory at (800) 426-1202.
<b>YEAR 2000 COMPLIANT:</b>	N/A
<b>FEDERAL TAX ID NUMBER:</b>	91-0836983
<b>DUNS NUMBER:</b>	009479296
<b>CAGE CODE:</b>	7N051
<b>SAM REGISTRATION:</b>	Yes
<b>TERMS &amp; CONDITIONS:</b>	Standard unless noted above
<b>PRICE INCREASES:</b>	Exempt
<b>CONTRACT RENEWAL:</b>	2 additional 1 year periods



26246 Twelve Trees Lane NW, Poulsbo, Washington 98370  
360.394.1300 [www.watsonfurniture.com](http://www.watsonfurniture.com)

---

**NASPO ValuePoint**

- The NASPO ValuePoint Cooperative Purchasing Organization is led by State Procurement Officers from member States elected by their peers.
- All new products developed and introduced by Watson will be offered at the above discounting.
- This agreement is for Colleges and Universities, Counties, Municipalities, School Districts, and other Governmental Agencies and Political Subdivisions (non-Federal), and Nonprofits within the United States.

---

**WATSON DISPATCH**

- Purchase Orders are issued by NASPO ValuePoint members directly to Watson.
  - Watson's shall submit invoices, in duplicate, directly to NASPO ValuePoint member at the appropriate location(s) specified by NASPO ValuePoint member, and will send a copy to NASPO ValuePoint.
  - NASPO ValuePoint members will make payments directly to Watson.
  - Watson Dispatch Installation will be Quoted per job (site and conditions vary).
  - Watson Dispatch Installation provided by Watson or Watson Dispatch Certified installers
-