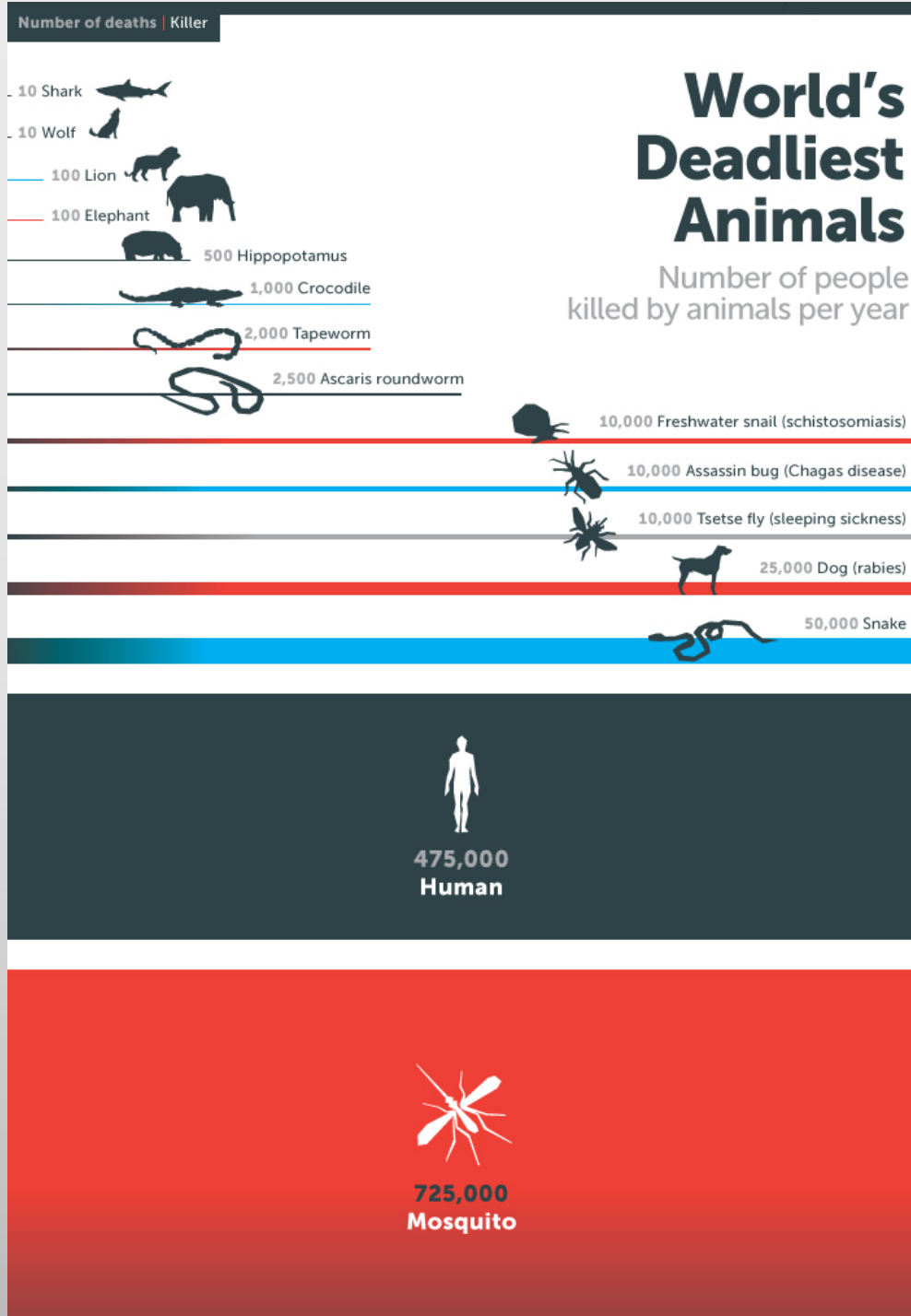




# Northwest Mosquito & Vector Control District

*Protecting northwest Riverside County  
since 1959*



# "Epidemic conditions" a possibility due to historic mosquito season

"Epidemic conditions" a possibility due

COACHELLA VALLEY, Calif.- - A historic season has opened to door to possible "epidemic conditions" when it comes to the presence of virus-positive mosquitos in the Coachella Valley, according to a Coachella Valley Mosquito and Vector Control District (CVMVCD) news release.

District testing has revealed that the mosquito population in the valley is especially high and that there has been an unprecedented number of samples coming up positive for both West Nile Virus (WNV) and Saint Louis Encephalitis Virus (SLEV).

More than 180 mosquito samples have tested positive for the diseases in the valley this year. That's up from only about 25 positive samples detected last year.

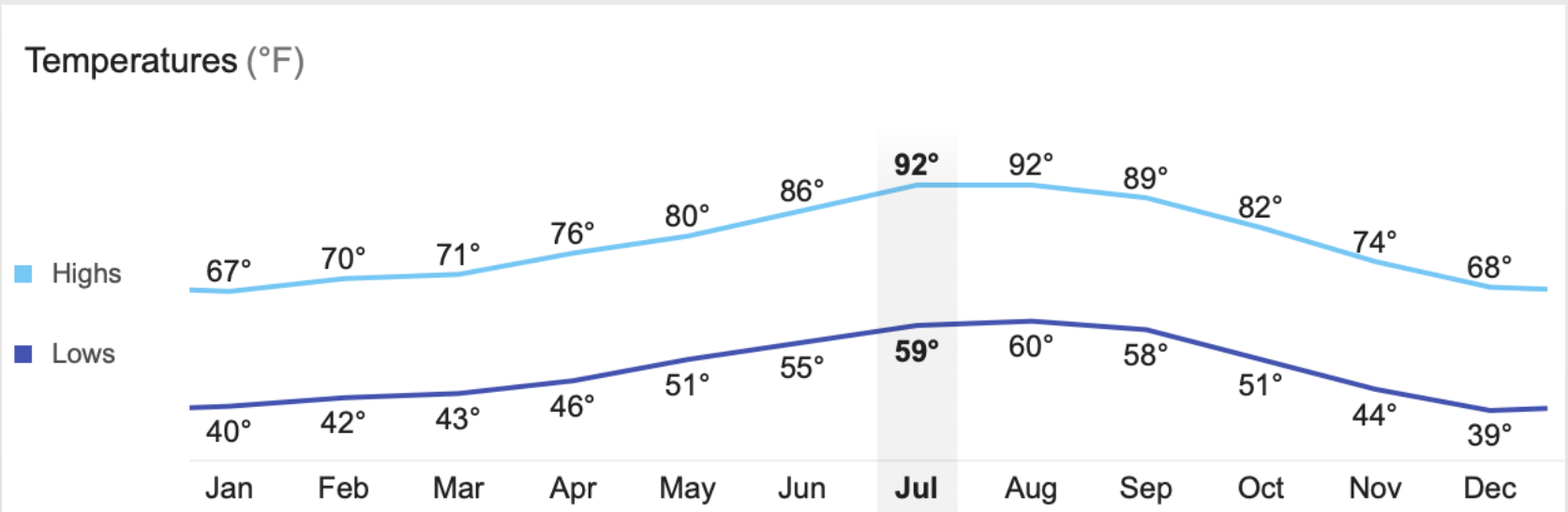
"We have the conditions that are right for having people becoming sick,"

# 2019 Positive Mosquito Pools

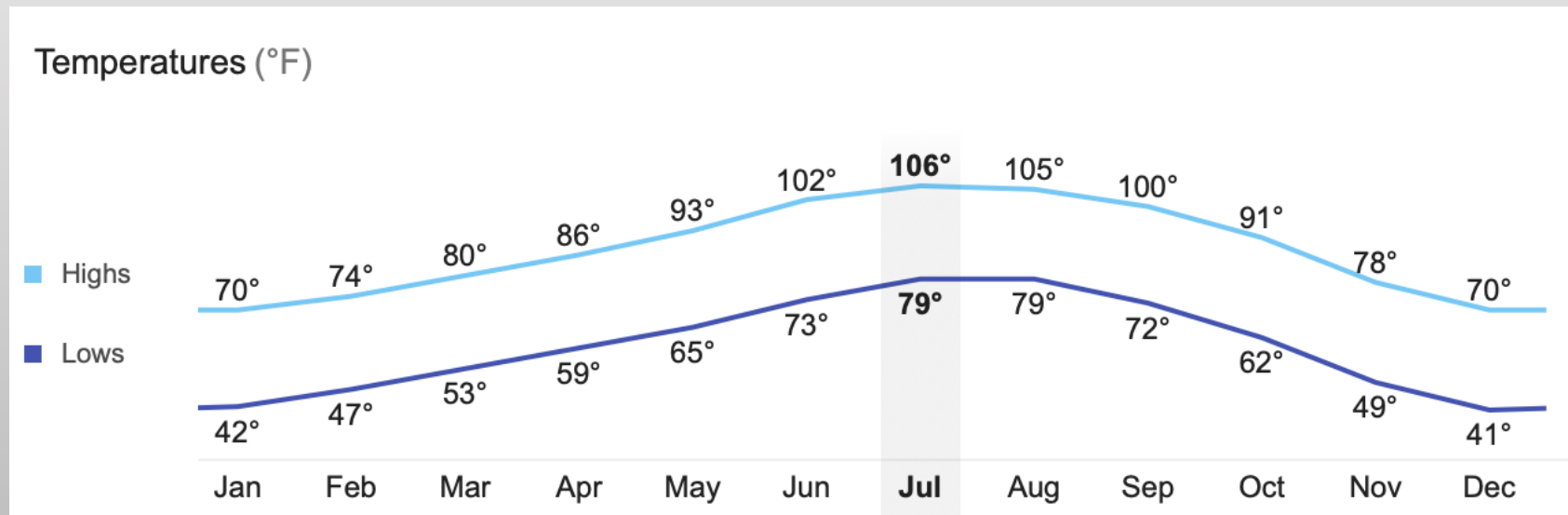
	Northwest Mosquito & Vector Control District	Coachella Valley Mosquito & Vector Control District
West Nile virus	0	316
Saint Louis encephalitis	0	5

\*As of July 15,2019

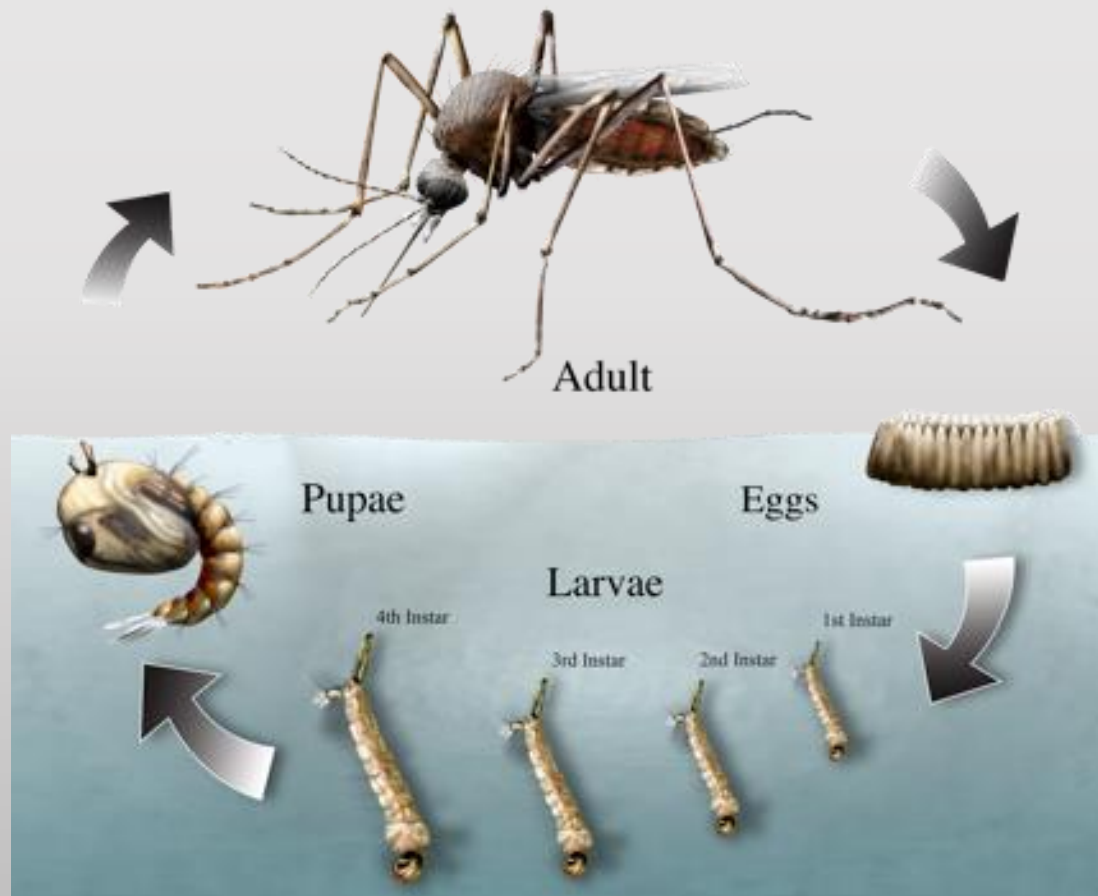
# Corona Average Temperature



# Coachella Valley Average Temperature



# Mosquito Life Cycle



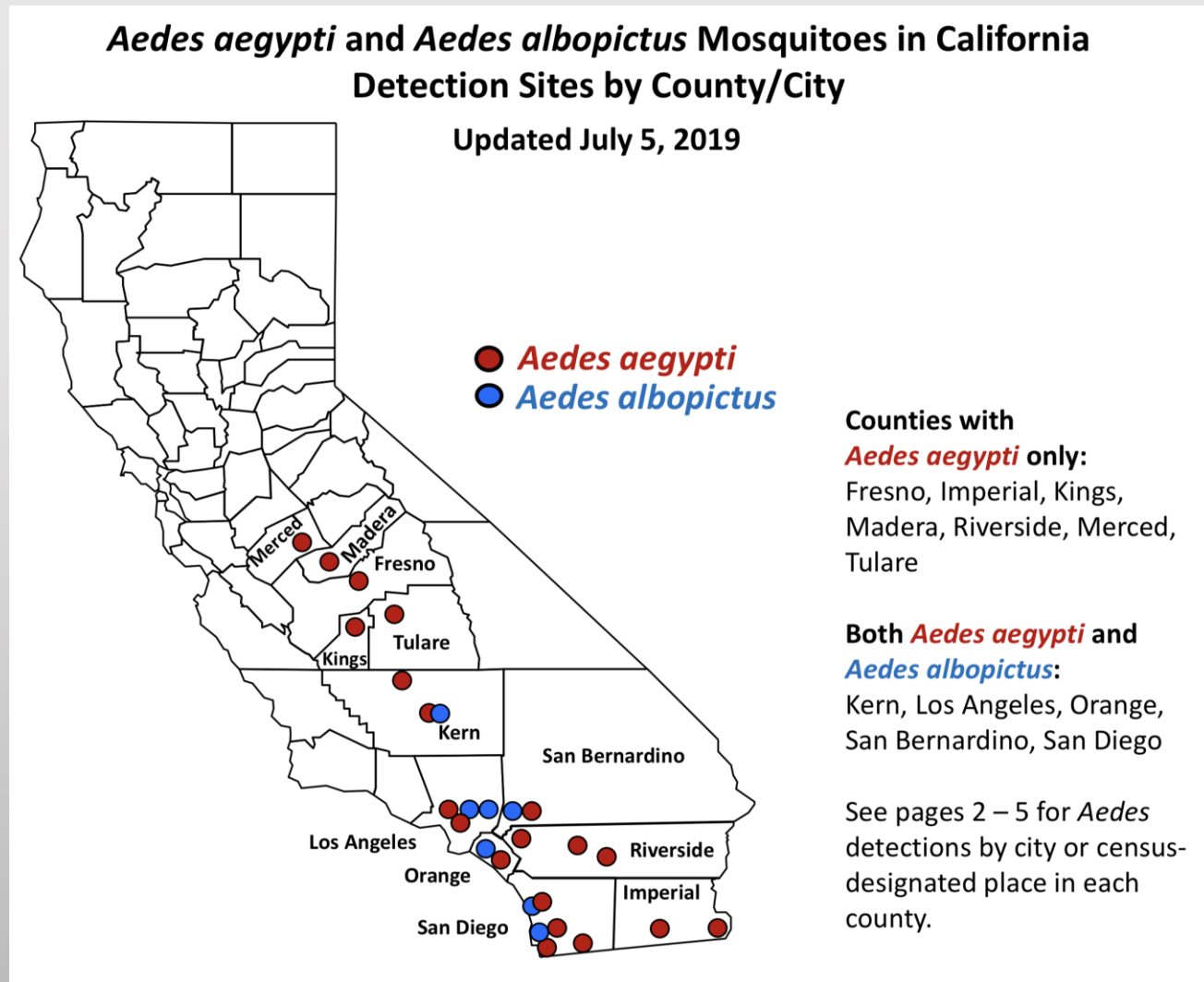


*Aedes aegypti*, Yellow Fever Mosquito



# Cities where the Yellow fever mosquito has *been detected in NWMVCD District*

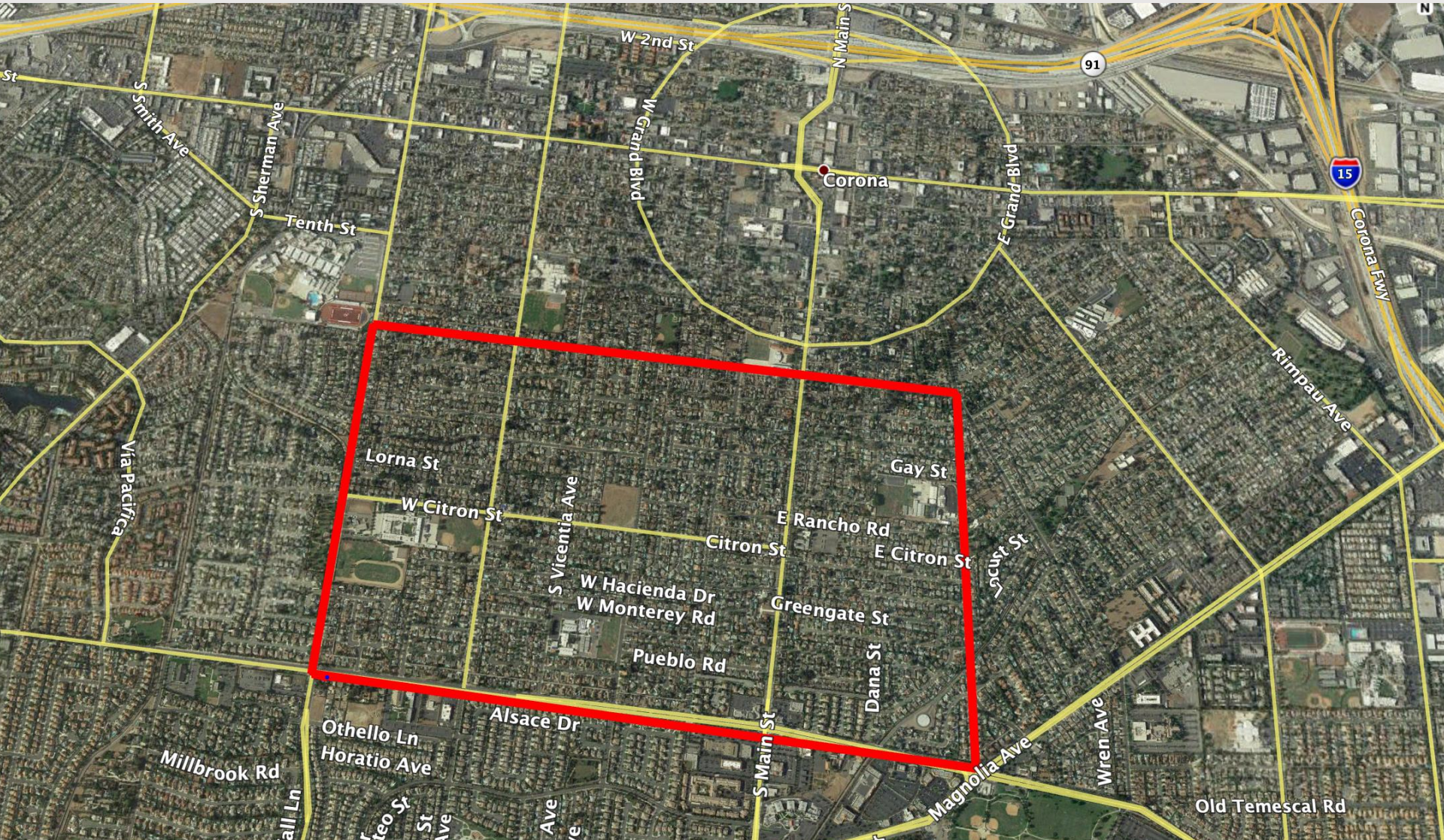
- Corona
- Riverside
- Eastvale
- Norco





# Yellow fever mosquito in Corona

\*July 19, 2019





# Breeding Sources for *Aedes*



**ELIMINATION OF AEADES  
AEGYPTI  
BREEDING SITES---  
THE INITIATIVE  
MOSTLY LIES WITH  
INDIVIDUALS/COMMUNITY**



# Control Methods (IVM)

- Public Education
- Adulticiding
- Larval Source Management





*Thank you*  
*Any Questions*



*Contact the District*

Telephone: 951-340-9792

Website: [www.northwestmvcd.org](http://www.northwestmvcd.org)

Email: [eballejos@northwestmvcd.org](mailto:eballejos@northwestmvcd.org)

Address: 1966 Compton Avenue Corona,  
CA 92881