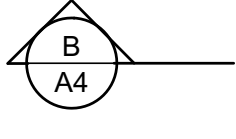


EQUIPMENT SCHEDULE					GAS	WATER		DRAIN
NUMBER	DESCRIP	MODEL	SIZE	COMMENT	BTU / HOUR	HOT	COLD	DIRECT
1	STAINLESS TABLE	-	24" TO 36" DEEP	NSF APPROVED				
2	DEEP FRYER (3)	FRYMASTER J-2-X	40" WIDE	11,000 BTU EA.	33,000 BTU			
3	REFG. BASE	CUSTOM FABRICATED BY	15'-6" LONG	SEE ELEV. FOR DOORS				
4	JADE CHAR BROILER	JADE RANGE JB-32	32" WIDE		90,000 BTU			
5				REFG PART OF REFG BA				INDIRECT
6	JADE 4 BURNER	JADE RANGE JHP4-12	24"		72000 BTU			
7	GRIDDLE	JADE RANGE JGT2460	60"		120000 BTU			
8	STEAM TABLE	CUSTOM FABRICATION	42"		15000 BTU		1/2"	1/2"
9	HANDSINK			WITH SOAP AND TOWEL		1/2"	1/2"	INDIRECT DIRECT
10	METAL STORAGE SHELVES	CUSTOM FABRICATION	36	NSF				
11	CASH REGISTER	BY OWNER						
11	CASH REGISTER	BY OWNER						
11	CASH REGISTER	BY OWNER						
12	DRINK AND ICE DISPENSER						1/2"	INDIRECT
13	METAL STORAGE SHELVES	CUSTOM FABRICATION		NSF				
14	DRINK AND ICE DISPENSER						1/2"	INDIRECT
15	ICE TEA DISPENSER							
16	COFFEE DISPENSER							
17	COFFEE MAKER						1/2"	
18	HEAT LAMPS							
19	FREEZER UNDER COUNT	SILVER KING SKUC-7	30x30					
20	EXHAUST HOOD	NON-CANOPY HOOD	22'-0" LONG	6600 CFM				
21	DISHWASHING SINK		20" WIDE E	NSF APPROVED			1/2"	1/2"
22	SCRAP SINK		20" WIDE	GARBAGE DISPOSAL			1/2"	1/2"
23	DISH WASHER	ENERGY MISER	30" WIDE				3/4"	1/2"
24	JADE 6 BURNER WITH O	JADE RANGE	48"		120000 BTU			
25	REFG. UNDER COUNTER			NSF APPROVED				
26	FOOD PREP SINK	-	34" WIDE	NSF APPROVED			1/2"	1/2"
27	WORK BENCH	-	10'-0" W	NSF APPROVED				
28	WORK BENCH	-	10'-0" W	NSF APPROVED				
29	STAINLESS TABLE	-	30" WIDE	NSF APPROVED				
30	SLICER		1-1/3 HP	NSF APPROVED				
31	ICE MAKER	HOSUZAKY KM1200	25 AMP/208	WATER FILTER			1/2"	1/2"
32	MOP SINK		20x20	NSF APPROVED			1/2"	1/2"
33	JANITORIAL STORAGE			NSF APPROVED				DIRECT
34	AIR CURTAIN			ACTIVATED BY DOOR				
35	WALK-IN FREEZER	MARS AIR FLY	28 IN. / 1'					
36	WALK-IN REFG							
37	STORAGE CAB							
38	STORAGE CAB							
39	PANTRY SHELVING	PANTRY SHELVING	38 LF.					
40	DRIVE THRU WINDOW			OPENABLE AREA 215 SQ. IN.				
41	FLOOR SINKS							
42	WORK SHELF							
43	TOASTERS			ON STAINLESS STEEL SHELF				
44	MICRO WAVE OVEN			ON STAINLESS STEEL SHELF				
45	WATER HEATER	RHEEM/RUUD G100-75						
46	LOCKERS			8 COMPARTMENT				
M1	EXHAUST BLOWER		2200 CFM					
M2	EXHAUST BLOWER		2200 CFM					
M3	EXHAUST BLOWER		2200 CFM					
M5	VAP. COOLER						1/2"	
M9	VAP. COOLER		1800 CFM				1/2"	
M10	EXHAUST BLOWER		1800 CFM					
M11	REFG BASE COMPRESSOR		1-1/3 HP		75,000 BTU			
M12	WATER HEATER		100 GAL.					
M13	AIR DOOR	MARS #28						
M14	FREEZER COMPRESSOR		2-1/4 HP					
M15	REFG. COMPRESSOR		2-1/4 HP					
M16	BATHROOM EXHAUST FAN		110 CFM					
M17	BATHROOM EXHAUST FAN		110 CFM					
M18	DINING AC UNIT #1		5 TON					
M19	DINING AC UNIT #2		5 TON					
M20	MISC. ROOMS AC UNIT #3		1.5 TON					
M21	DINING FAU UNIT #1		2000 CFM		100,000 BTU			
M22	DINING FAU UNIT #2		2000 CFM		100,000 BTU			
M23	MISC. ROOMS FAU #3		800 CFM		20000 BTU			

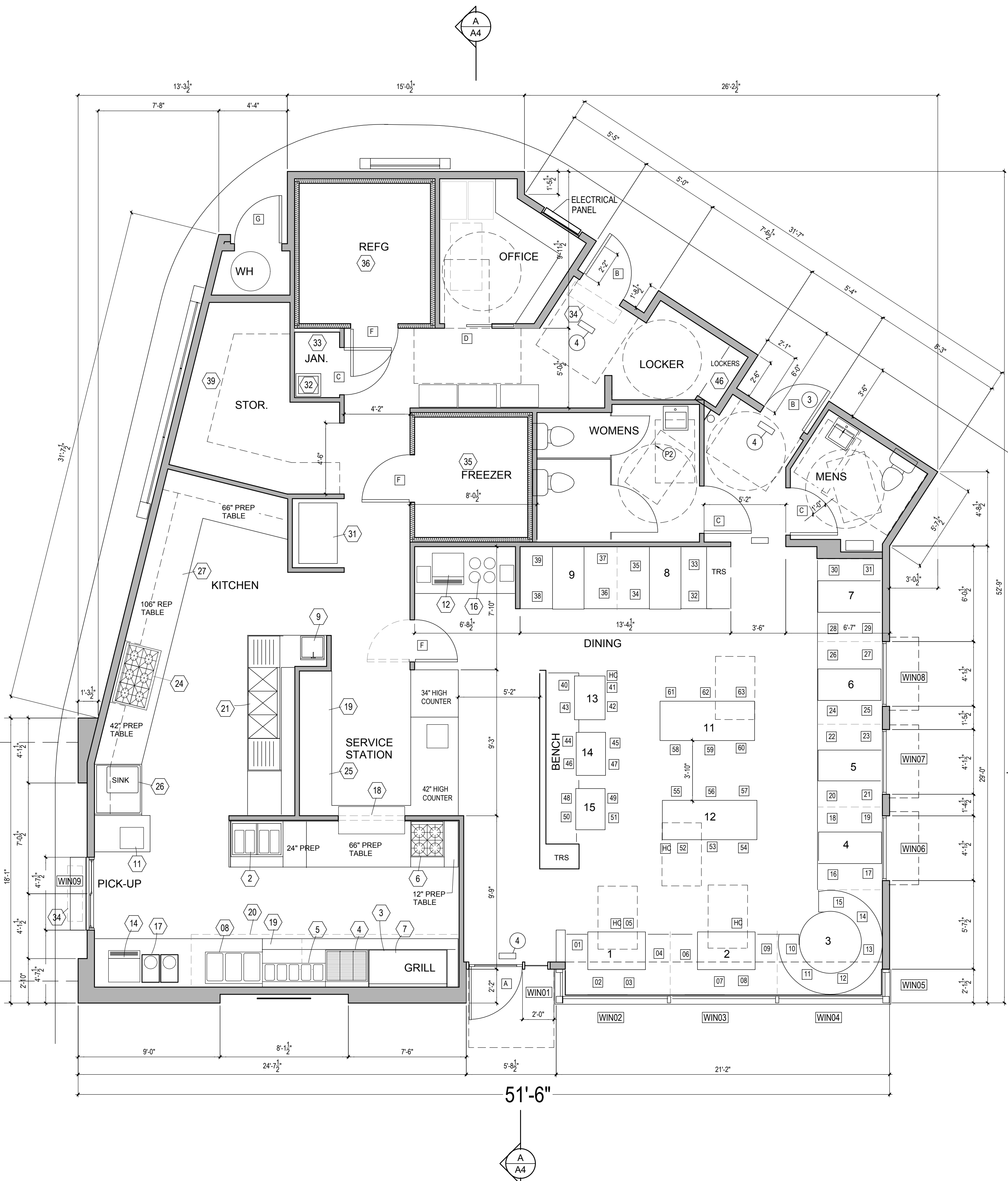
DOOR SCHEDULE				
SYM	SIZE	DOOR	LEVER	
A	40x96	GLASS/ALUMINUM	2, 4	UNLOCKED-HANDLE
B	36x96	STEEL DOOR (18 GAUGE)	3, 1	UNLOCKED-HANDLE
C	36x96	OAK VENNER SOLID PANEL	1	PAMEX PENDLETON (F75)
D	36x84	OAK VENNER SOLID PANEL	PAMEX F134 (LOCK)	5 POCKET DOOR SLIDING HARDWARE HAGER 9631
E	36x84	REFG-FREEZE DOOR	NO LATCH	EXEMPT FROM ADA
F	36x96	OAK VENNER W/ GLASS PANEL	7	DOUBLE SWING PUSH DOOR SELF CLOSING
G	36x96	STEEL DOOR (18 GAUGE)	3	EXISTING - 2- 12x12 VENTS

1. OAK VENNER SOLID PANEL, 20 MIN CAT-B 1-3/4" THICK, PBC CORE, FRAME, 90 MINUTE STEEL FRAME WITH 3/4"x10" KICK PLATE PER ANSI A107.1
2. ENTRY DOOR: ALUMINUM FRAME WITH 10" BOTTOM RAIL AND TEMPERED GLASS PANEL
3. STEEL DOOR, 90 MIN RATED, 1-3/4" THICK, FRAME, 90 MINUTE STEEL FRAME WITH 3/4"x10" SINGLE PANEL SMOOTH
4. SELF CLOSER PAMEX GC8700
5. FULLY OPEN DOOR HARDWARE SHALL BE FULLY EXPOSED AND USABLE FROM BOTH SIDES
6. HANDLES, PULLS, LATCHES, LOCKS AND OTHER OPERABLE PARTS ON DOORS AND GATES SHALL COMPLY WITH CBC 11B-309.4
7. KITCHEN DOOR: VENNER PANEL DOOR WITH 10"x12" GLASS PANEL, DOUBLE SWING SELF CLOSING HARDWARE
- REQUIRED EXIT DOOR CLEARANCES SHALL CONFORM TO TABLE 11B-404.2.4.1, AND FIG 11B-404.2.4.1, FIG 11B-404.2.4.2

WIN SCHEDULE					
SYM	SIZE	FRAME	AREA	USHCS	DIR
WIN01	24x96	GLASS/ALUMINUM	14	.5 / .3	W
WIN02	79x96	GLASS/ALUMINUM	53	.5 / .3	S
WIN03	79x96	GLASS/ALUMINUM	53	.5 / .3	S
WIN04	79x96	GLASS/ALUMINUM	53	.5 / .3	S
WIN05	24x96	GLASS/ALUMINUM	14	.5 / .3	E
WIN06	48x96	GLASS/ALUMINUM	28	.5 / .3	E
WIN07	48x96	GLASS/ALUMINUM	28	.5 / .3	E
WIN08	48x96	GLASS/ALUMINUM	28	.5 / .3	E
WIN10	54x48	GLASS/ALUMINUM	18	.5 / .3	N



ROOF SOFFIT



- OCCUPANCY SIGN: POST A SIGN WHICH STATES THE OCCUPANCY LOAD IN MIN. 1.5" CHARACTERS SIGN SHALL BE POSTED IN OBSERVANT PLACE
- LANDING: A CLEAR, LEVEL AND UNOBSTRUCTED MANEUVERING CLEARANCE SHALL BE PROVIDED THRESHOLD HEIGHT SHALL NOT EXCEED 3/4" FOR SLIDING DOORS AND 1/2" FOR ALL OTHER DOORS. (CBC 1010.1.7) FLOOR ELEVATION CHANGES GREATER THAN 1/4" SHALL BE PER CBC SECTION 11B-303.3 AND FIGURE 11B-303.3
- EXIT DOORS: EXIT DOORS SHALL BE MIN. 36" WIDE WITH MIN. 32" CLEAR OPENING PER CBC 1010.1 DOOR CLEARANCES SHALL CONFORM TO TABLE 11B-404.2.4.1, AND FIGURE 11B-404.2.4.1
- EXIT SIGNS: PROVIDE EXIT SIGN PER CBC SECTION 1013 ABOVE EXIT DOORS INTERNALLY ILLUMINATED THE WORK "EXIT" SHALL BE HAVE MIN. 6" HIGH X 3/4" STROKE LETTERS, LISTED AND LABELED IN ACCORDANCE WITH UL 924, EXIT LIGHT COMPANY COMBORJ2
- MEANS OF EGRESS ILLUMINATION PER CBC SECT 1008.2 EXIT CORRIDORS SHALL BE ILLUMINATED AT ALL TIMES THAT THE SPACE IS OCCUPIED. ILLUMINATION LEVEL SHALL BE NOT LESS THAN 1 FOOT CANDLE AT THE WALKING SURFACE. PER CBC SECT 1008.2.1. EMERGENCY BATTERY BACK UP SHALL BE PROVIDED PER CBC SECT. 1008.3.5
- FLOORING:
 - A. KITCHEN AND FOOD/STORAGE AREAS: QUARRY TILE 6x6 WITH COVE BASE MIN. 3/8" RADIUS EXTENDING MIN. 4" UP WALL. TILE SHALL BE MIN. 1/4" THICK IMPACT RESISTANT. COMMERCIAL KITCHEN GRADE IMPERVIOUS TO WATER, GREASE AND ACID RESISTANT. PER ANSI A137.1
 - B. DINING AND REST ROOMS: CERAMIC TILE WOOD PLANKING PATTERN WITH SMOOTH COVE BASE EXTENDING MIN. 4" UP WALL. TILE SHALL BE MIN. 1/4" THICK IMPACT RESISTANT. COMMERCIAL GRADE IMPERVIOUS TO WATER, GREASE AND ACID RESISTANT. PER ANSI A137.1
- WALLS IN ALL AREAS EXCEPT DINING WALL BE DURABLE, SMOOTH AND NONABSORBENT, WITH A LIGHT COLORED GLOSS ENAMEL PAINT. DRY WALL IN KITCHEN AND BATH AREAS TO BE WATER RESISTANT
- WALL AREAS ABOVE SINKS, FOOD PREPARATION AND COOKING AREAS TO HAVE METAL CLADDING STAINLESS STEEL GRADE 304 22 GAUGE TO 8" ABOVE COVE, ALL GAPS AND VOIDS BETWEEN PANELS, CONNECTOR STRIP OR ADJACENT SURFACES ARE TO BE SEALED
- CEILINGS IN ALL AREAS EXCEPT DINING ROOM AREA SHALL BE WATER RESISTANT DRYWALL SMOOTH FINISH (NO TEXTURE) WITH GLOSS ENAMEL PAINT FINISH
- KITCHEN TABLES-COUNTER TOPS TO BE STAINLESS STEEL 304, 16 GAUGE CUSTOM MADE WITH STAINLESS STEEL BASE AND DRAWERS AND DOORS ON SIX INCH HIGH LEGS
- SERVICE STATION: COUNTER TOPS TO BE GRANITE WITH SEALER, BASE CABINET TO BE STAINLESS STEEL BASE ON SIX INCH HIGH LEGS, WITH WOOD PANEL DOOR FACES
- DINING SURFACES: PROVIDE 5% OF THE SEATING AND STANDING SPACES SHALL COMPLY TO CBC SECTION 11B-302 WITH 30x48 CLEAR FLOOR SPACE PER CBC 11B-305 AND KNEE SPACE PER CBC 11B-306, DINING SURFACE AND WORK SURFACE SHALL BE 28 IN MIN. AND 34" MAX CBC 11B-902.4 SEATING 68x55 = 3.4, PROVIDE 4 ACCESSIBLE SPACES
- TURNING SPACE SHALL BE PROVIDE PER 304.3.1, A 60" DIA. CIRCLE DOOR SWING WAY ENCRATCH 12" INTO SWING CBC 11B-304.4

DEFERRED SUBMITTALS FOR:
FIRE SPRINKLERS, SIGNS, STORAGE RACKS, KITCHEN SUPPRESSION SYSTEM.

OCCUPANCY LOAD
DINING AREA 618 SF. SEATED = 63
WAITING AREA 90 SF. = 4
KITCHEN-OFFICE 1117 SF/ 200 SF = 6
TOTAL OCCUPANCY 73
REQUIRED EXITS = 2
CBC TABLE 1008.3.1
EXITS PROVIDED = 3

REQUIRED TOILETS 73/2, MALE/FEMALE = 36.5
TABLE 422.1 CPC,
PROVIDE: MALE 1 TOILET, AND 1 URINALS, ONE LAVA
FEMALE 2 TOILET, ONE LAVA
TOTAL INTERIOR AREA = 2243 SF

WALL LEGEND
NEW WALLS
WOOD BEAMS

ARCHITECT:
DAVID YORK, ARCHITECT
403 CALLE CAMPANERO
SAN CLEMENTE, CA. 92673
(949) 887-8034 YORKARCH@YAHOO.COM

OWNER:
MILTON ECONOMY
1052 FLAGER CAMPANERO
CORONA CA., 92881
(949) 929-2651

DRIVE THRU
RESTAURANT
4300 GREEN RIVER RD
CORONA, CA. 92882

FLOOR PLAN

SCALE 1/4"=1'-0"

EXHIBIT D

5-2-19

1

1 OF