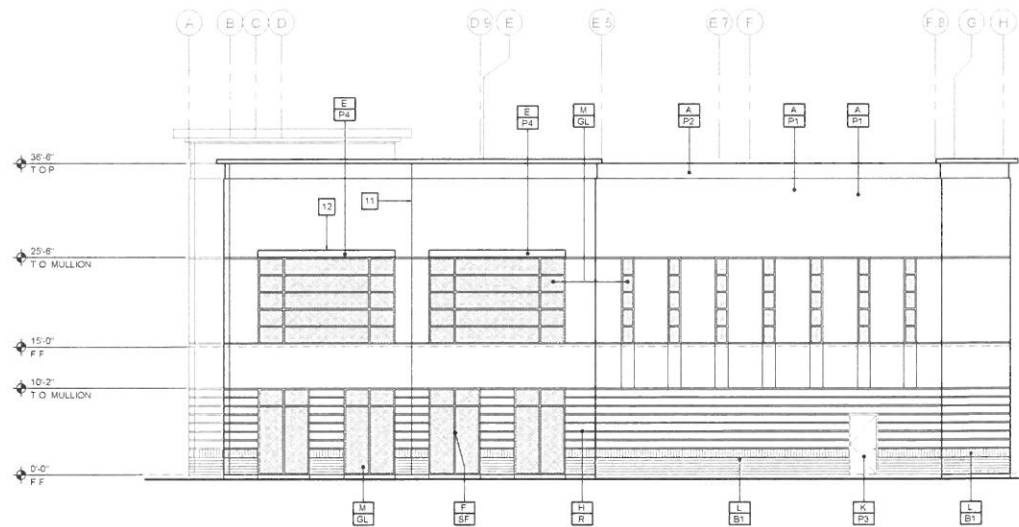


'B' - EAST ELEVATION

SCALE 1/8" = 1'-0"



'D' - WEST ELEVATION

SCALE 1/8" = 1'-0"

EXT. ELEVATION KEYNOTES

1. PLASTER FINISH
2. 0.5 M PARAPET FLASHING
3. WEEP SCREED. SEE DTL D1, D2/A6.1 AND DTL E1, E2/A6.1 AT WALK CONDITIONS
4. ROOF DRAIN LINE DOWN COLUMN - DAYLIGHT AT GRADE - SEE DTL D2/A6.0
5. DASHED LINE INDICATES LINE OF ROOF DECK
6. PROPOSED SIGNAGE
7. PROPOSED ADDRESS SIGNAGE (12" HIGH LETTERS AT FRONT AND 12" HIGH ON SIDE OF BUILDING)
8. ROOF DRAIN LINE IN WALL - TIE INTO STORM DRAIN SYSTEM
9. PRE-FAB STONE TRIM CAP
10. PLASTER FINISH OF FOAM TRIM - SEE REF. DETAILS
11. EXPANSION JOINTS - SEE DTL E3/A6.0 AND E4/A6.0
12. ACCENT TRIM
13. FIRE SPRINKLER RISER
14. GAS METER LOCATION - SEE PLUMBING
15. ELECTRICAL MAIN PANEL - SEE ELECTRICAL

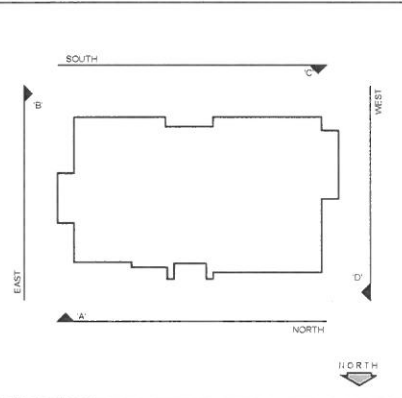
MATERIAL / FINISH SCHEDULE

NO.	ITEM	MANUF.	COLOR
A	TILT-UP CONCRETE PANEL	-	TO BE SELECTED
B	METAL PANEL	-	TO BE SELECTED
C	STOREFRONT - CURTAINWALL	-	TO BE SELECTED
D	EXPANSION JOINTS	-	TO BE SELECTED
E	METAL TRIM	-	TO BE SELECTED
F	STOREFRONT	-	TO BE SELECTED
G	METAL ENTRY CANOPY	-	TO BE SELECTED
H	PANEL REVEAL	-	TO BE SELECTED
I	ARCHITECTURAL METAL PANEL	-	TO BE SELECTED
J	HOLLOW METAL DOOR/FRAME	-	TO BE SELECTED
K	BRICK VENEER	-	TO BE SELECTED
L	GLAZING	-	TO BE SELECTED
M	SPANDREL GLAZING	-	TO BE SELECTED
N	SPANDREL GLAZING	-	TO BE SELECTED

GENERAL NOTES

- NOTE 1 PER SPECIFICATION SECTION 09100 PROVIDE 2 LAYERS OF TYPE 'D' OR EQUIVALENT WATER-RESISTANT VAPOR-PERMEABLE BARRIER AT ALL LOCATIONS OF WOOD SHEATHING THAT IS TO RECEIVE A PLASTER FINISH PER CBC 2510.6
- NOTE 2 PER SPECIFICATIONS SECTION 09100 PROVIDE A HIGH RIB LATH PRODUCT AT ALL HORIZONTAL APPLICATIONS

KEY PLAN



EXTERIOR ELEVATIONS

SCALE 1/8" = 1'-0"



6121 North Tressa #301, Fresno, CA 93710  
(P) 559-439-0700, (F) 559-439-0708  
www.pings.com

THE FIRM OF ANTHONY C. PINGS AND ASSOCIATES, A LIMITED LIABILITY COMPANY, IS THE ARCHITECT OF RECORD FOR THE PROJECT. THE FIRM HAS PREPARED THE ARCHITECTURAL DRAWINGS AND SPECIFICATIONS FOR THE PROJECT. THE FIRM HAS NOT CONDUCTED A VISUAL QUALITY REVIEW OF THE PROJECT. THE FIRM HAS NOT CONDUCTED A VISUAL QUALITY REVIEW OF THE PROJECT. THE FIRM HAS NOT CONDUCTED A VISUAL QUALITY REVIEW OF THE PROJECT.



Project Architect Approval

Consultant:

Project Name:

Shell Building for  
Corona Medical Center  
Medical Office Building  
Building B  
Sixth Street and Belle Ave.  
Corona, Ca

Sheet Title:

Exterior Elevations

Project Number:

422.0

Project Contact:

ANTHONY PINGS

Scale:

AS NOTED

Issue Date: 3-8-17 Issue Description: PRELIMINARY

Revisions	Revision Date
No.	

Drawing  
A3.2  
Sheet of