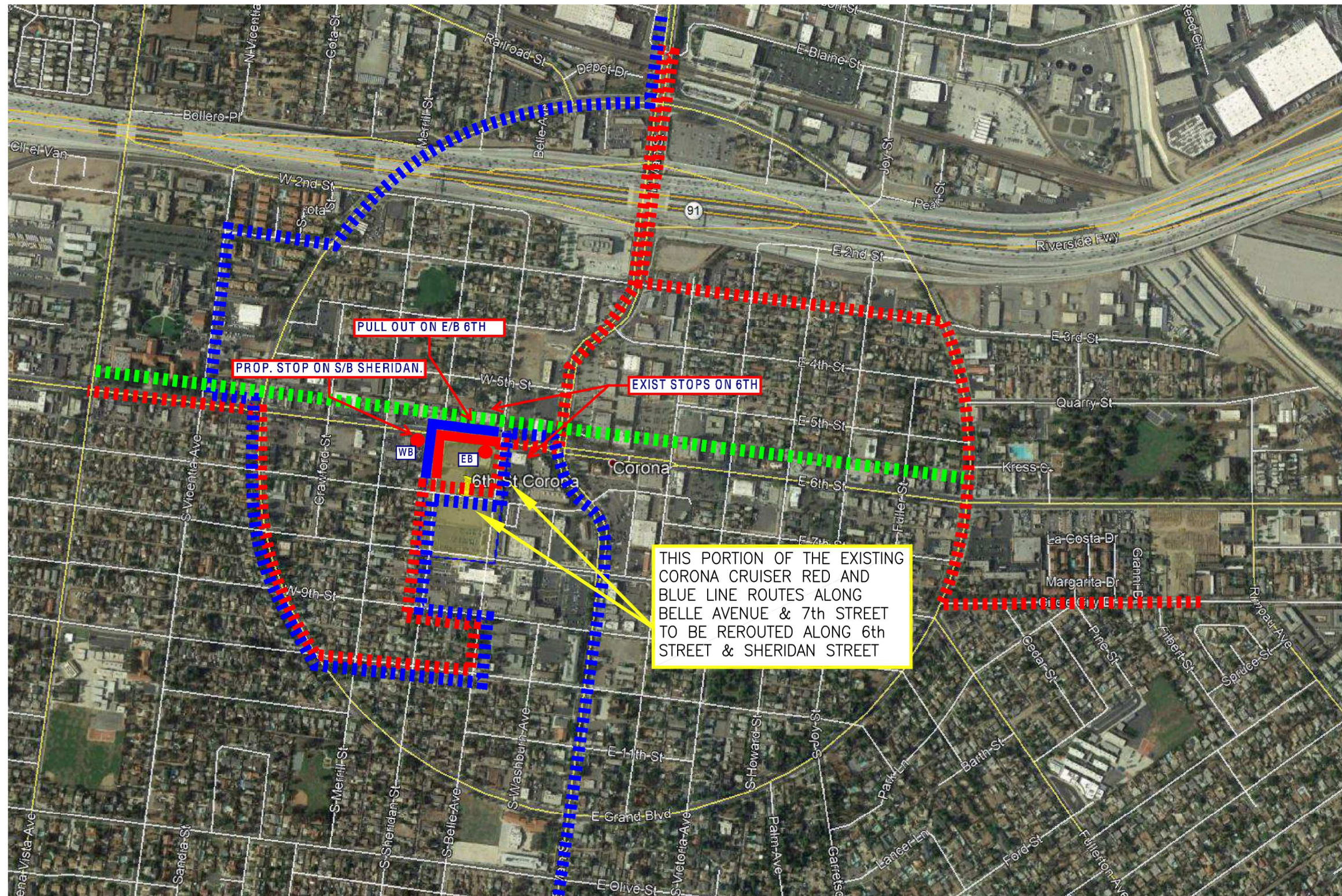


# PROPOSED CORONA CRUISER BUS ROUTE CHANGE

CITY OF CORONA, CA



## LEGEND

- EXISTING CORONA CRUISER RED LINE ROUTE
- PROPOSED CORONA CRUISER RED LINE ROUTE
- PROPOSED CORONA CRUISER RED LINE BUS STOP
- EXISTING CORONA CRUISER BLUE LINE ROUTE
- PROPOSED CORONA CRUISER BLUE LINE ROUTE
- EXISTING RTA ROUTE 1 (THIS ROUTE WILL BE UNAFFECTED)



16795 Von Karman, Suite 100, Irvine, California 92606  
tel 949.474.1960 • fax 949.474.5315 • www.fusco.com



NOT TO SCALE  
08/13/2019

# EXHIBIT L