

BUILDING S.F.	
FIRST FLOOR	16,650 S.F.
SECOND FLOOR	15,650 S.F.
THIRD FLOOR	12,500 S.F.

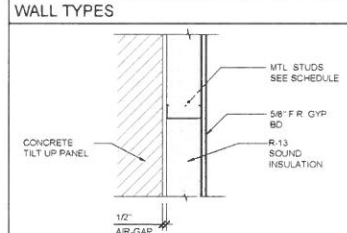
OVERALL FLOOR PLAN - GROUND FLOOR - BUILDING "A"
SCALE: 1/8" = 1'-0"

- FLOOR PLAN KEYED NOTES**
1. CURTAINWALL / GLAZING SYSTEM - VERIFY ALL CONDITIONS
 2. PROVIDE 18" CLEAR BETWEEN DOOR JAMB AND ADJACENT WALL AT PULL SIDE OF DOOR AT INTERIOR DOORS. PER DTL. E3A6.0
 3. PROVIDE 12" CLEAR BETWEEN DOOR JAMB AND ADJACENT WALL PUSH SIDE OF DOOR. PER DTL. E3A6.0
 4. PROVIDE 24" CLEAR BETWEEN DOOR JAMB AND ADJACENT WALL AT PULL SIDE OF DOOR. PER DTL. E3A6.0
 5. MAINTAIN 60" CLEAR IN FRONT AND 48" BEHIND DOOR. PER DETAIL E3A6.0
 6. NEW CONCRETE SLAB AND WALK AT DOOR - SEE SITE PLAN A1.0
 7. INDICATES FIRE SPRINKLER RISER
 8. INDICATES PROPOSED GAS METER LOCATION
 9. INDICATES ELECTRICAL PANELS - SEE ELECTRICAL
 10. LINE OF ENTRY CANOPY
 11. INDICATES ROOF DRAIN DOWN WALL - DAYLIGHT AT GRADE - SEE DTL. C5A1.2 AND C1A6.3
 12. INDICATES ROOF OVERFLOW DRAIN DOWN WALL - DAYLIGHT AT WALL - SEE DTL. A5A6.5 AND C1A6.3
 13. CONCRETE SLAB ON GRADE @ SAND AND VAPOR BARRIER
 14. INDICATES STRUCTURAL COLUMNS
 15. STAIRWELL COLUMNS (IN THIS PERMIT) - SEE STRUCTURAL
 16. INDICATES ELEVATOR EQUIPMENT
 17. INDICATES SCHEMATIC LAYOUT OF CONTROL ROOM (LAYOUT PER T.I. DOCUMENTS)
 18. INDICATES LOCATION OF MECHANICAL SHAFT PENETRATIONS THROUGH FLOOR DECK (COORDINATE EXACT LOCATION WITH T.I. DOCUMENTS)
 19. LOCATIONS OF WET UTILITIES AT COLUMNS - SEE PLUMBING
 20. INDICATES LINE OF CONCRETE VAULT BELOW - NO PENETRATIONS ALLOWED
 21. CONCRETE SLAB @ METAL DECK - SEE STRUCTURAL
 22. INDICATES LINE OF ARCHITECTURAL CANOPIES AT WINDOWS
 23. CONCRETE VAULT - (SEE T.I. DOCUMENTS FOR BUILD-OUT)

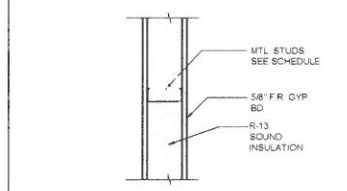
- LEGEND**
- | SYMBOL | DESCRIPTION |
|--------|-------------------------------------------|
| | SEE FLOOR PLAN KEYED NOTES - THIS SHEET |
| | DETAIL CUT - SEE DETAIL SHITS A6.0-A6.6 |
| | DOOR - SEE DOOR SCHEDULE - SHEET A1.4 |
| | WINDOW - SEE WINDOW SCHEDULE - SHEET A1.4 |

- EXITING GENERAL NOTES**
- A. EACH GRADE LEVEL EXTERIOR EXIT SHALL BE IDENTIFIED BY A TACTILE EXIT SIGN WITH THE WORD "EXIT"
 - B. EACH EXIT DOOR THAT LEADS TO A GRADE LEVEL EXTERIOR EXIT BY MEANS OF A STAIRWAY OR RAMP SHALL BE IDENTIFIED BY A TACTILE EXIT SIGN WITH THE FOLLOWING WORDS AS APPROPRIATE: 1. "EXIT STAIR DOWN", 2. "EXIT RAMP DOWN", 3. "EXIT STAIR UP", 4. "EXIT RAMP UP"
 - C. EACH EXIT DOOR THAT LEADS DIRECTLY TO A GRADE LEVEL EXTERIOR EXIT BY MEANS OF AN EXIT ENCLOSURE OR AN EXIT PASSAGEWAY SHALL BE IDENTIFIED BY A TACTILE EXIT SIGN WITH THE WORDS "EXIT ROUTE"
 - D. EACH EXIT ACCESS DOOR FROM AN INTERIOR ROOM OR AREA TO A CORRIDOR OR HALLWAY THAT IS REQUIRED TO HAVE A VISUAL EXIT SIGN SHALL BE IDENTIFIED BY A TACTILE EXIT SIGN WITH THE WORDS "EXIT ROUTE"
 - E. EACH EXIT DOOR THROUGH A HORIZONTAL EXIT SHALL BE IDENTIFIED BY A TACTILE EXIT SIGN WITH THE WORDS "TO EXIT"

- GENERAL NOTES**
1. FOR TYPICAL WALL FRAMING - SEE DTL. B4A6.4
 2. PARTIAL HEIGHT WALLS PER DTL. D3A6.3
 3. FULL HEIGHT WALLS PER DTL. E2A6.3



W1	INTERIOR WALL		
NO	STUD	SPACING	INSUL
W1-2.5	2 1/2" - 20 GA	16" O.C	R-8
W1-4	4" - 20 GA	16" O.C	R-13



W2	INTERIOR WALL		
NO	STUD	SPACING	INSUL
W2-2.5	2 5" - 20 GA	16" O C	R-8
W2-4	4" - 20 GA	16" O C	R-13
W2-4	6" - 20 GA	16" O C	R-13

- WALL LEGEND**
- | WALL TYPE - THIS SHEET | STUD SIZE |
|--------------------------------------|-----------|
| | W1-4 N1P |
| PARTITION HEIGHT | |
| PARTITION FIRE RATING | |
| NEW (N) OR EXISTING (E) CONSTRUCTION | |
- PARTITION FIRE RATING
0. NON-RATED
1. 1-HOUR PARTITION
- PARTITION HEIGHT
- F. FULL HEIGHT TO ROOF DECK - ATTACH PER DTL. E2A6.3
- P. PARTIAL HEIGHT (MIN. 4' ABOVE ADJACENT HORIZ. CEILING) BRACE TO ROOF DECK - PER DTL. D3A6.3

Anthony C. Pings and Associates
Architecture
Planning and
Interior Design
6121 North Thesta #301, Fresno CA 93710
(P) 559-439-0700, (F) 559-439-0708
www.pings.com

6121 North Thesta #301, Fresno CA 93710
(P) 559-439-0700, (F) 559-439-0708
www.pings.com



Project Architect Approval:
Consultant:

Project Name:

Shell Building for:
Corona Medical Center
Medical Office Building
Sixth Street and Belle Avenue
Corona, Ca

Sheet Title:
Overall Floor Plan -
Ground Floor - Bldg. A

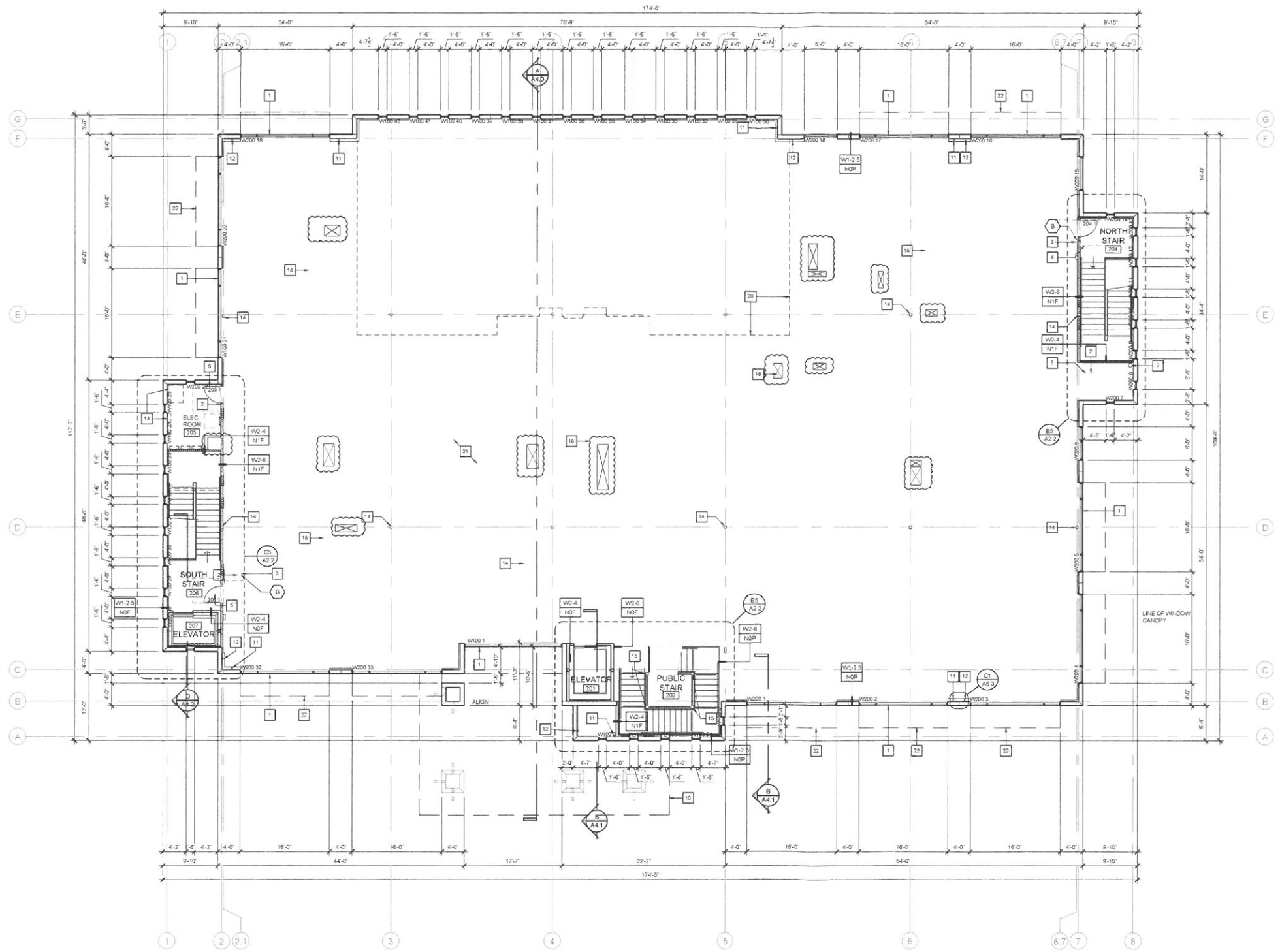
Project Number:
421.0
Project Contact:
ANTHONY PINGS
Scale:
AS NOTED

Issue Date:	Issue Description:
3-8-17	PRELIMINARY
12-13-18	DEVELOPMENT REVIEW
12-27-18	PLAN CHECK

Revisions	Revision Date:
No.	

Drawing:
A2.0

EXHIBIT D1



BUILDING S.F.	
FIRST FLOOR	16,800 S.F.
SECOND FLOOR	15,800 S.F.
THIRD FLOOR	32,500 S.F.

OVERALL FLOOR PLAN - SECOND FLOOR - BUILDING "A"
SCALE: 1/8" = 1'-0"

FLOOR PLAN KEYED NOTES

- 1 CURTAINWALL / GLAZING SYSTEM - VERIFY ALL CONDITIONS
- 2 PROVIDE 18" CLEAR BETWEEN DOOR JAMB AND ADJACENT WALL AT PULL SIDE OF DOOR AT INTERIOR DOORS PER DTL. E3A6.0
- 3 PROVIDE 12" CLEAR BETWEEN DOOR JAMB AND ADJACENT WALL PUSH SIDE OF DOOR PER DTL. E3A6.0
- 4 PROVIDE 24" CLEAR BETWEEN DOOR JAMB AND ADJACENT WALL AT PULL SIDE OF DOOR PER DTL. E3A6.0
- 5 MAINTAIN 60" CLEAR IN FRONT AND 48" BEHIND DOOR, PER DETAIL E3A6.0
- 6 NEW CONCRETE SLAB AND WALK AT DOOR - SEE SITE PLAN A1.0
- 7 INDICATES FIRE SPRINKLER RISER
- 8 INDICATES PROPOSED GAS METER LOCATION
- 9 INDICATES ELECTRICAL PANELS - SEE ELECTRICAL
- 10 LINE OF ENTRY CANOPY
- 11 INDICATES ROOF DRAIN DOWN WALL - DAYLIGHT AT GRADE - SEE DTL. C3A1.2 AND C3A1.3
- 12 INDICATES ROOF OVERFLOW DRAIN DOWN WALL - DAYLIGHT AT WALL - SEE DTL. A3A6.5 AND C3A1.3
- 13 CONCRETE SLAB ON GRADE w/ SAND AND VAPOR BARRIER
- 14 INDICATES STRUCTURAL COLUMNS
- 15 STAIRWELL COLUMNS (IN THIS PERMIT) - SEE STRUCTURAL
- 16 INDICATES ELEVATOR EQUIPMENT
- 17 INDICATES SCHEMATIC LAYOUT OF CONTROL ROOM LAYOUT PER T.I. DOCUMENTS
- 18 INDICATES LOCATION OF MECHANICAL SHAFT PENETRATIONS THROUGH FLOOR DECK (COORDINATE EXACT LOCATION WITH T.I. DOCUMENTS)
- 19 LOCATIONS OF WET UTILITIES AT COLUMNS - SEE PLUMBING
- 20 INDICATES LINE OF CONCRETE VAULT BELOW - NO PENETRATIONS ALLOWED
- 21 CONCRETE SLAB w/ METAL DECK - SEE STRUCTURAL
- 22 INDICATES LINE OF ARCHITECTURAL CANOPIES AT WINDOWS
- 23 CONCRETE VAULT - (SEE T.I. DOCUMENTS FOR BUILD-OUT)

LEGEND

- | SYMBOL | DESCRIPTION |
|--------|-------------------------------------------|
| | SEE FLOOR PLAN KEYED NOTES - THIS SHEET |
| | DETAIL CUT - SEE DETAIL SHTS. A6.0-A6.6 |
| | DOOR - SEE DOOR SCHEDULE - SHEET A1.4 |
| | WINDOW - SEE WINDOW SCHEDULE - SHEET A1.4 |

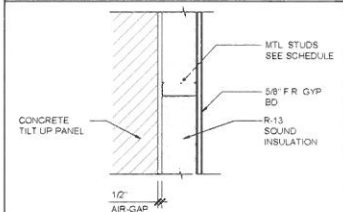
EXITING GENERAL NOTES

- A EACH GRADE LEVEL EXTERIOR EXIT DOOR SHALL BE IDENTIFIED BY A TACTILE EXIT SIGN WITH THE WORD "EXIT"
- B EACH EXIT DOOR THAT LEADS TO A GRADE LEVEL EXTERIOR EXIT BY MEANS OF A STAIRWAY OR RAMP SHALL BE IDENTIFIED BY A TACTILE EXIT SIGN WITH THE FOLLOWING WORDS AS APPROPRIATE: 1 "EXIT STAIR DOWN", 2 "EXIT RAMP DOWN", 3 "EXIT STAIR UP", 4 "EXIT RAMP UP"
- C EACH EXIT DOOR THAT LEADS DIRECTLY TO A GRADE LEVEL EXTERIOR EXIT BY MEANS OF AN EXIT ENCLOSURE OR AN EXIT PASSAGEWAY SHALL BE IDENTIFIED BY A TACTILE SIGN WITH THE WORDS: EXIT ROUTE
- D EACH EXIT ACCESS DOOR FROM AN INTERIOR ROOM OR AREA TO A CORRIDOR OR HALLWAY THAT IS REQUIRED TO HAVE A VISUAL EXIT SIGN SHALL BE IDENTIFIED BY A TACTILE EXIT SIGN WITH THE WORDS: EXIT ROUTE
- E EACH EXIT DOOR THROUGH A HORIZONTAL EXIT SHALL BE IDENTIFIED BY A TACTILE EXIT SIGN WITH THE WORDS: TO EXIT

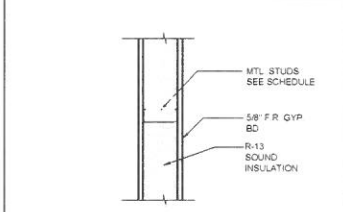
GENERAL NOTES

- 1 FOR TYPICAL WALL FRAMING - SEE DTL. B4A6.4
- 2 PARTIAL HEIGHT WALLS PER DTL. E3A6.3
- 3 FULL HEIGHT WALLS PER DTL. E3A6.3

WALL TYPES

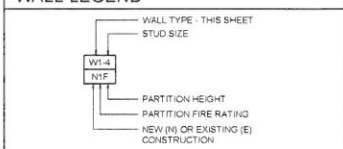


W1 INTERIOR WALL			
NO.	STUD	SPACING	INSUL.
W1-2.5	2 5/8" 20 GA.	16" O.C.	R-8
W1-4	4" 20 GA.	16" O.C.	R-13



W2 INTERIOR WALL			
NO.	STUD	SPACING	INSUL.
W2-2.5	2 5/8" 20 GA.	16" O.C.	R-8
W2-4	4" 20 GA.	16" O.C.	R-13
W2-4	5" 20 GA.	16" O.C.	R-13

WALL LEGEND



PARTITION FIRE RATING	
0	NON-RATED
1	1-HOUR PARTITION
PARTITION HEIGHT	
F	FULL HEIGHT TO ROOF DECK - ATTACH PER DTL. E3A6.3
P	PARTIAL HEIGHT (MIN. 4' ABOVE ADJACENT HORIZ. CEILING) - BRACE TO ROOF DECK - PER DTL. D3A6.3

Anthony C. Pings and Associates
Architecture
Planning and
Interior Design
6121 North Thesta #301, Fresno CA 93710
(P) 559-439-0700, (F) 559-439-0708
www.pings.com

Project Architect Approval:
Consultant:

Project Name:

Shell Building for:
Corona Medical Center
Medical Office Building
Sixth Street and Belle Avenue
Corona, Ca

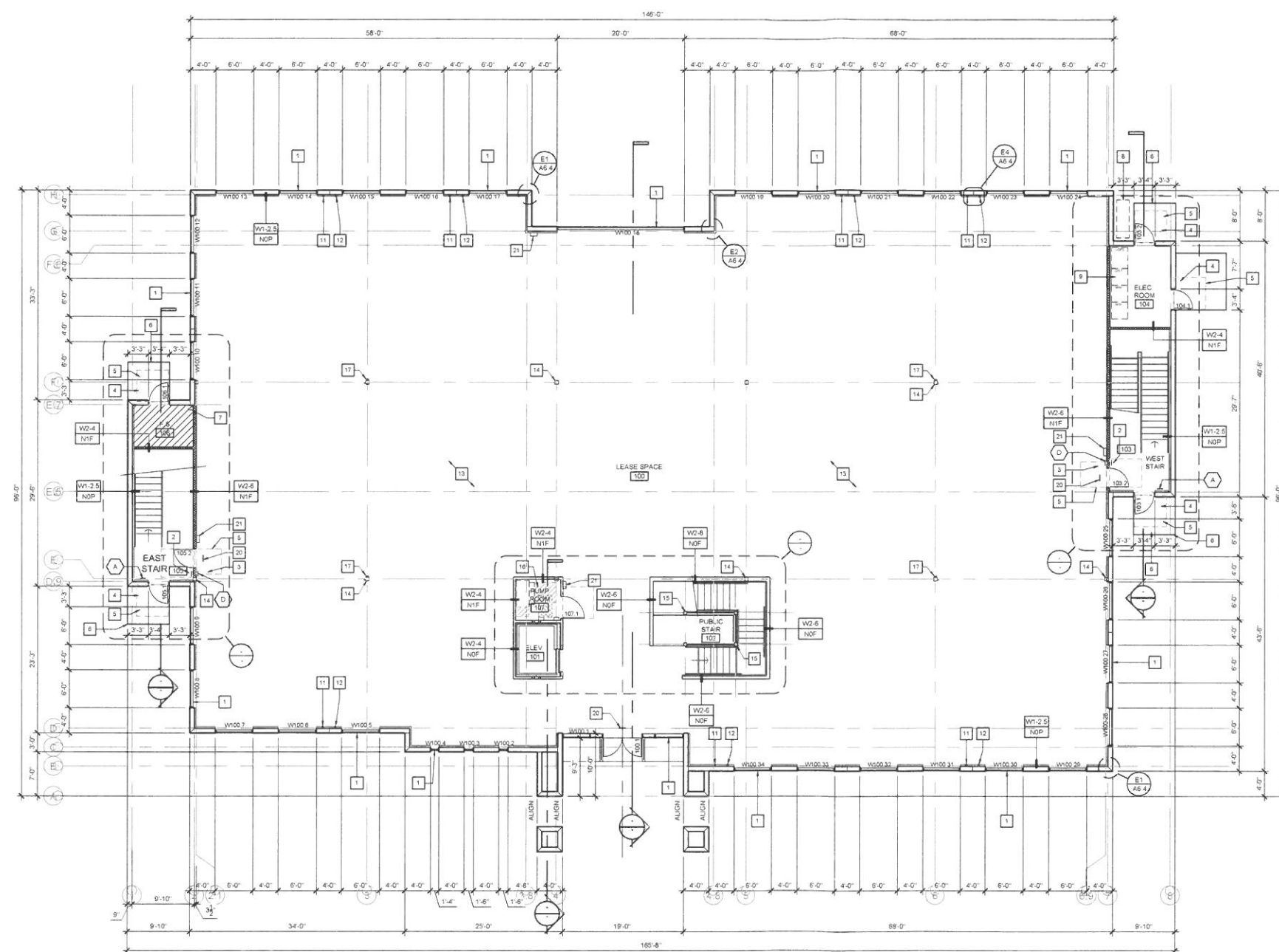
Sheet Title:
**Overall Floor Plan -
Second Floor - Bldg. A**

Project Number:
421.0
Project Contact:
ANTHONY PINGS
Scale:
AS NOTED

Issue Date:	Issue Description:
3-8-17	PRELIMINARY
12-13-18	DEVELOPMENT REVIEW
12-27-18	PLAN CHECK

Revisions	Revision Date
No.	

Drawing
A2.1
Sheet of

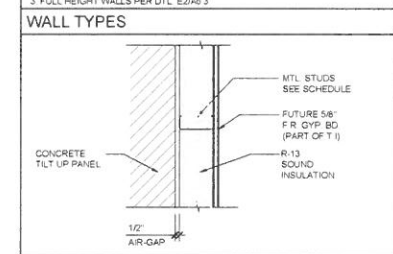


- FLOOR PLAN KEYED NOTES**
- 1 CURTAINWALL / GLAZING SYSTEM. VERIFY ALL CONDITIONS.
 - 2 PROVIDE 18" CLEAR BETWEEN DOOR JAMB AND ADJACENT WALL. AT FULL SIDE OF DOOR AT INTERIOR DOORS. PER DTL. E3/A6.0.
 - 3 PROVIDE 12" CLEAR BETWEEN DOOR JAMB AND ADJACENT WALL. PUSH SIDE OF DOOR. PER DTL. E3/A6.0.
 - 4 PROVIDE 24" CLEAR BETWEEN DOOR JAMB AND ADJACENT WALL. AT FULL SIDE OF DOOR. PER DTL. E3/A6.0.
 - 5 MAINTAIN 60" CLEAR IN FRONT AND 48" BEHIND DOOR. PER DETAIL E3/A6.0.
 - 6 NEW CONCRETE SLAB AND WALK AT DOOR. SEE SITE PLAN A1.0.
 - 7 INDICATES FIRE SPRINKLER RISER.
 - 8 INDICATES PROPOSED GAS METER LOCATION.
 - 9 INDICATES ELECTRICAL PANELS - SEE ELECTRICAL.
 - 10 INDICATES LINE OF ARCHITECTURAL CANOPIES AT WINDOWS.
 - 11 INDICATES ROOF DRAIN DOWN WALL - DAYLIGHT AT GRADE - SEE DTL. C3/A1.2 AND C1/A6.3.
 - 12 INDICATES ROOF OVERFLOW DRAIN DOWN WALL - DAYLIGHT AT WALL - SEE DTL. A3/A6.5 AND C1/A6.3.
 - 13 CONCRETE SLAB ON GRADE w/ SAND AND VAPOR BARRIER.
 - 14 INDICATES STRUCTURAL COLUMNS.
 - 15 STAIRWELL COLUMNS (IN THIS PERMIT) - SEE STRUCTURAL.
 - 16 INDICATES ELEVATOR EQUIPMENT.
 - 17 LOCATIONS OF WET UTILITIES AT COLUMNS - SEE PLUMBING.
 - 18 INDICATES LOCATION OF MECHANICAL SHAFT PENETRATIONS THROUGH FLOOR DECK (COORDINATE EXACT LOCATION WITH T1 DOCUMENTS).
 - 19 CONCRETE SLAB w/ METAL DECK - SEE STRUCTURAL.
 - 20 TEMPORARY EXIT SIGN (ABOVE DOOR) ILLUMINATED (EXIT FOR SHELL SPACE).
 - 21 WALL MOUNTED 2A10BC FIRE EXTINGUISHER (TEMPORARY AT SHELL SPACE).
 - 22 LINE OF 1 HR. WALL BELOW.

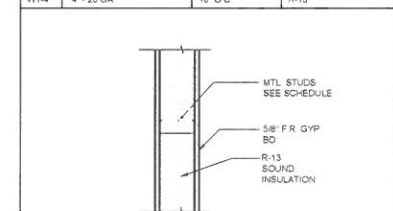
- LEGEND**
- SYMBOL DESCRIPTION
- SEE FLOOR PLAN KEYED NOTES - THIS SHEET
 - DETAIL CUT - SEE DETAIL SHTS. A6.0-A6.6
 - DOOR - SEE DOOR SCHEDULE - SHEET A1.4
 - WINDOW - SEE WINDOW SCHEDULE - SHEET A1.4

- TACTILE EXITING NOTES**
- NO. DESCRIPTION
- A EACH GRADE LEVEL EXTERIOR EXIT SHALL BE IDENTIFIED BY A TACTILE EXIT SIGN WITH THE WORDS "EXIT".
 - B EACH EXIT DOOR THAT LEADS TO A GRADE LEVEL EXTERIOR EXIT BY MEANS OF A STAIRWAY OR RAMP SHALL BE IDENTIFIED BY A TACTILE EXIT SIGN WITH THE FOLLOWING WORDS AS APPROPRIATE: 1. "EXIT STAIR DOWN"; 2. "EXIT RAMP DOWN"; 3. "EXIT STAIR UP"; 4. "EXIT RAMP UP".
 - C EACH EXIT DOOR THAT LEADS DIRECTLY TO A GRADE LEVEL EXTERIOR EXIT BY MEANS OF AN EXIT ENCLOSURE OR AN EXIT PASSAGEWAY SHALL BE IDENTIFIED BY A TACTILE SIGN WITH THE WORDS "EXIT ROUTE".
 - D EACH EXIT ACCESS DOOR FROM AN INTERIOR ROOM OR AREA TO A CORRIDOR OR HALLWAY THAT IS REQUIRED TO HAVE A VISUAL EXIT SIGN SHALL BE IDENTIFIED BY A TACTILE EXIT SIGN WITH THE WORDS "EXIT ROUTE".
 - E EACH EXIT DOOR THROUGH A HORIZONTAL EXIT SHALL BE IDENTIFIED BY A TACTILE EXIT SIGN WITH THE WORDS "TO EXIT".

- GENERAL NOTES**
- 1 FOR TYPICAL WALL FRAMING - SEE DTL. B4/A6.4.
 - 2 PARTIAL HEIGHT WALLS PER DTL. D3/A6.3.
 - 3 FULL HEIGHT WALLS PER DTL. E2/A6.3.



W1	INTERIOR WALL		
NO.	STUD	SPACING	INSUL.
W1-2.5	2 5/8" - 20 GA	16" O.C.	R-8
W1-4	4" - 20 GA	16" O.C.	R-13



W2	INTERIOR WALL		
NO.	STUD	SPACING	INSUL.
W2-2.5	2 5/8" - 20 GA	16" O.C.	R-8
W2-4	4" - 20 GA	16" O.C.	R-13
W2-6	6" - 20 GA	16" O.C.	R-13
W2-8	8" - 20 GA	16" O.C.	R-13

WALL LEGEND

WALL TYPE - THIS SHEET

STUD SIZE

W1-4

PARTITION HEIGHT

PARTITION FIRE RATING

NEW (N) OR EXISTING (E) CONSTRUCTION

PARTITION FIRE RATING

0 UNRATED

1 1-HOUR PARTITION

PARTITION HEIGHT

F FULL HEIGHT TO ROOF DECK - ATTACH PER DTL. E2/A6.3

P PARTIAL HEIGHT (MIN. 4" ABOVE ADJACENT HORIZ. CEILING) BRACE TO ROOF DECK - PER DTL. D3/A6.3

OVERALL FLOOR PLAN - GROUND FLOOR - BUILDING "B"

Anthony C. Pings and Associates

6121 North Thesta #301, Fresno CA 93710
(P) 556-439-0700, (F) 556-439-0708
www.pings.com

Architecture
Planning and
Interior Design

6121 North Thesta #301, Fresno CA 93710
(P) 556-439-0700, (F) 556-439-0708
www.pings.com

Project Architect Approval:
Consultant:

Project Name:
Shell Building for
Corona Medical Center
Medical Office Building

Sixth Street and Belle Ave.
Corona, Ca

Sheet Title:
Overall Floor Plan -
Ground Floor - Bldg. B

Project Number:
422.0

Project Contact:
ANTHONY PINGS

Scale:
AS NOTED

Issue Date:
3-6-17

Issue Description:
PRELIMINARY

Revisions:
No. Revision Date

Drawing:
A20

RELIMINARY

EXHIBIT D2



Sheet of