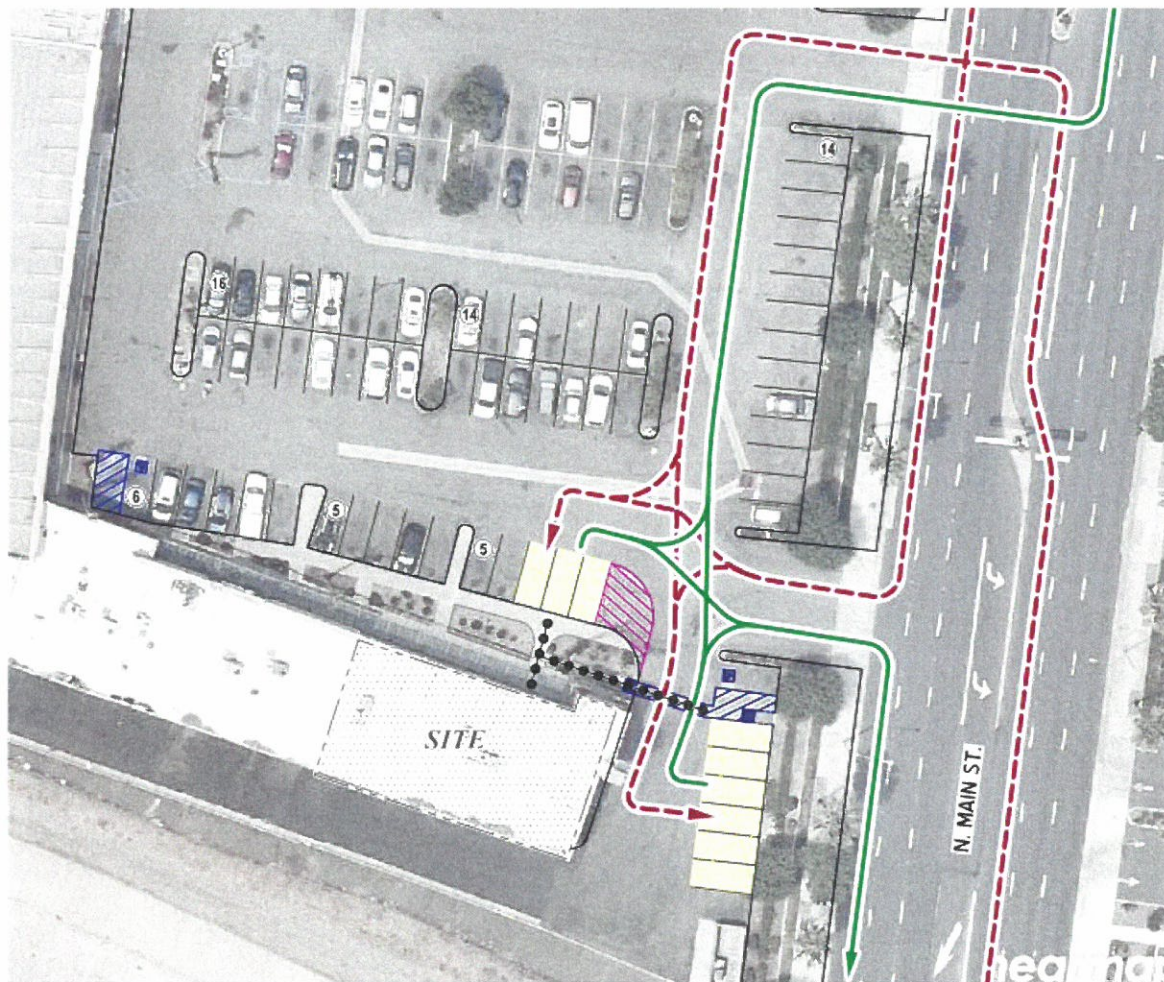




## Pivot Charter School Riverside Parent, Student, and Staff Parking Policy

Parents dropping off and picking up their students are asked to park their vehicles in a parking space to ensure students enter the school safely. Additionally, we ask that parents utilize the parking spaces closest to the entrance of the school so that they are within range of Pivot's staff supervision. If students arrive outside of the designated drop off and pick up times, parents are asked to walk their students in or out of school. This practice will optimize student safety in the parking areas around the school.



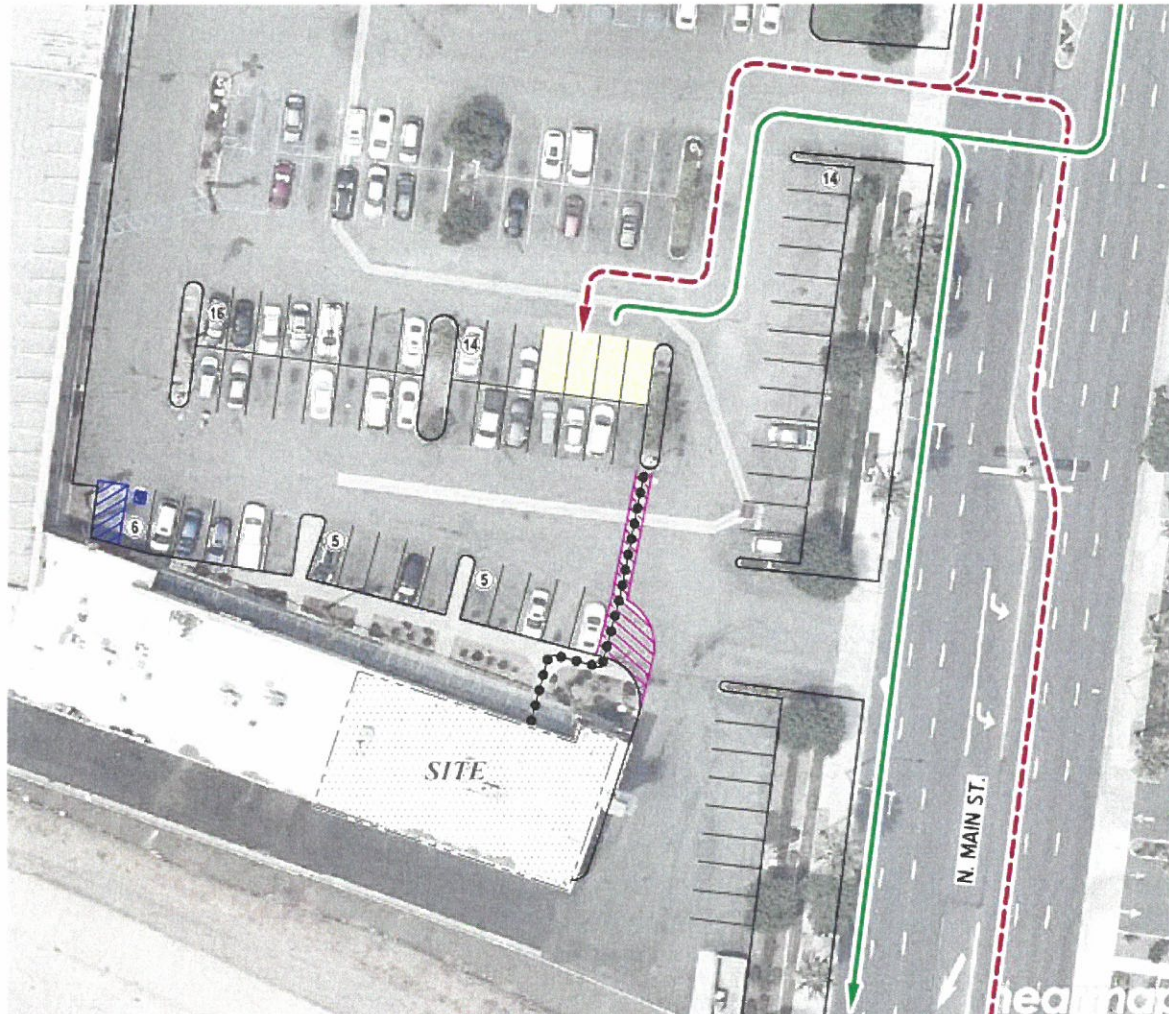
### LEGEND:

- INBOUND TRAFFIC FLOW
- OUTBOUND TRAFFIC FLOW
- DROP-OFF/PICK-UP PARKING SPACES
- 2-WAY PEDESTRIAN ROUTE





Students driving to school are requested to park their cars in the spaces marked below so that the parking spaces closest to the school can be utilized by parents during drop off and pick up, as well as by visitors. Students are also asked to follow the exit path shown below in green in order to ease potential traffic congestion near the school's entrance.

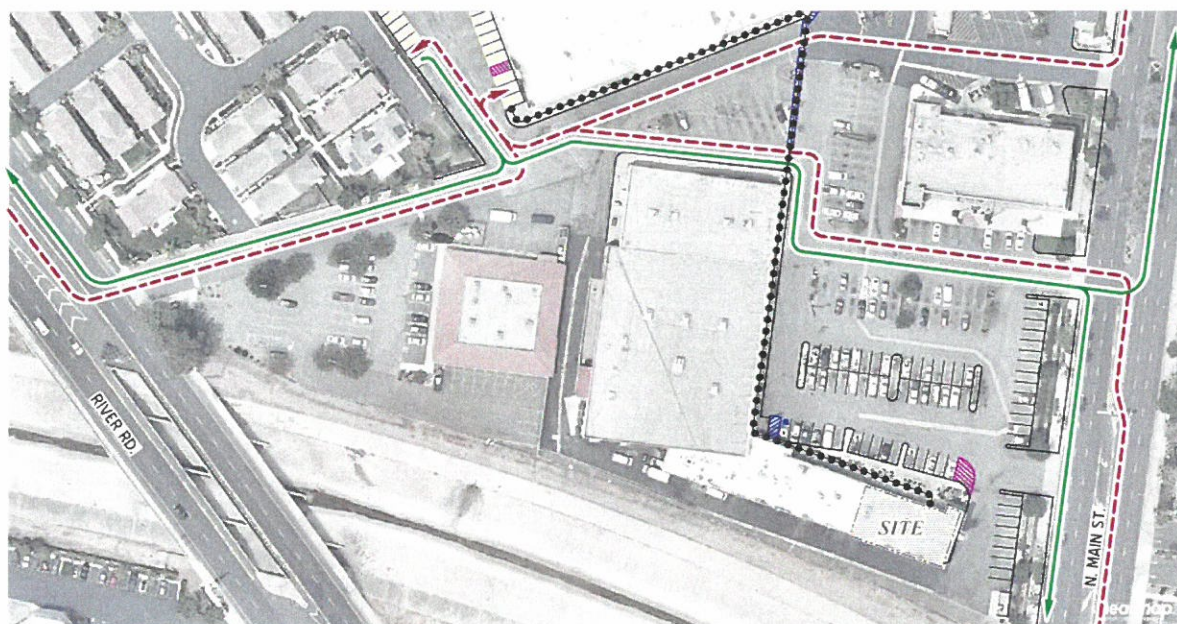


**LEGEND:**

- INBOUND TRAFFIC FLOW
- OUTBOUND TRAFFIC FLOW
- STUDENT PARKING SPACES
- 2-WAY PEDESTRIAN ROUTE



Staff are asked to park their cars behind the Burlington retail store and walk to the Pivot resource center as indicated in the image below. This practice will allow for parking spaces in the more desirable east portion of the parking lot to be utilized by patrons of the local businesses, including families visiting Pivot.



**LEGEND:**

- INBOUND TRAFFIC FLOW
- OUTBOUND TRAFFIC FLOW
- STAFF PARKING SPACES
- 2-WAY PEDESTRIAN ROUTE