

ABBREVIATIONS:

A/C	AIR CONDITIONING	LBS	POUNDS
AGL	ABOVE GRADE LEVEL		
APPROX	APPROXIMATELY	MAX	MAXIMUM
		MECH	MECHANICAL
BLDG	BUILDING	MTL	METAL
BLK	BLOCKING	MFR	MANUFACTURER
		MGR	MANAGER
CLG	CEILING	MIN	MINIMUM
CLR	CLEAR	MISC	MISCELLANEOUS
CONC	CONCRETE		
CONST	CONSTRUCTION	NA	NOT APPLICABLE
CONT	CONTINUOUS	NIC	NOT IN CONTRACT
		NTS	NOT TO SCALE
DBL	DOUBLE	OC	ON CENTER
DIA	DIAMETER	OD	OUTSIDE DIAMETER
DIAG	DIAGONAL		
DN	DOWN	PLYWD	PLYWOOD
DET	DETAIL	PROJ	PROJECT
DWG	DRAWING	PROP	PROPERTY
		PT	PRESSURE TREATED
EA	EACH		
ELEV	ELEVATION	REQ	REQUIRED
ELEC	ELECTRICAL	RM	ROOM
EQ	EQUAL	RO	ROUGH OPENING
EQUIP	EQUIPMENT	RRH	RADIO REMOTE HEAD
EXT	EXTERIOR		
		SHT	SHEET
FIN	FINISH	SIM	SIMILAR
FLUOR	FLUORESCENT	SPEC	SPECIFICATION
FLR	FLOOR	SF	SQUARE FOOT
FT	FOOT	SS	STAINLESS STEEL
		STL	STEEL
GA	GAUGE	STRUCT	STRUCTURAL
GALV	GALVANIZED	STD	STANDARD
GC	GENERAL CONTRACTOR	SUSP	SUSPENDED
GRND	GROUND		
GYP BD	GYP SUM WALL BOARD	THRU	THROUGH
		TMA	TOWER MOUNT
HORZ	HORIZONTAL		
HR	HOUR	TNND	TINNED
HT	HEIGHT	TYP	TYPICAL
HVAC	HEATING		
	VENTILATION	UNO	UNLESS NOTED OTHERWISE
	AIR CONDITIONING		
ID	INSIDE DIAMETER	VERT	VERTICAL
IN	INCH	VIF	VERIFY IN FIELD
INFO	INFORMATION		
INSUL	INSULATION	W/	WITH
INT	INTERIOR	W/O	WITHOUT
IBC	INTERNATIONAL BUILDING CODE	WP	WATER PROOF

LEGEND

---	SUBJECT BOUNDARY LINE
---	RIGHT-OF-WAY CENTERLINE
---	RIGHT-OF-WAY LINE
---	ADJACENT BOUNDARY LINE
—□/H —□/H —□/H —□/H —	OVERHEAD LINE
— U/E — U/E — U/E —	UNDERGROUND ELECTRICAL LINE
— U/T — U/T — U/T —	UNDERGROUND TELCO LINE
— U/F — U/F — U/F —	UNDERGROUND FIBER LINE
— G — G — G —	BURIED GAS LINE
— DHT — DHT — DHT —	OVERHEAD TELEPHONE LINE
— T — T —	BURIED TELEPHONE LINE
— W — W — W — W —	BURIED WATER LINE
— SS — SS — SS — SS —	BURIED SANITARY SEWER
— SD — SD — SD — SD —	BURIED STORM DRAIN
— X — X — X — X — X —	CHAIN LINK FENCE
— □ — □ — □ — □ —	WROUGHT IRON FENCE

△	TRANSFORMER	⊙	FIRE HYDRANT
⊗	LIGHT STANDARD	⊗	GATE VALVE
□	POWER VAULT	⊞	WATER METER
⊞	UTILITY BOX	□	CATCH BASIN, TYPE I
⊙	UTILITY POLE	⊞	CATCH BASIN, TYPE II

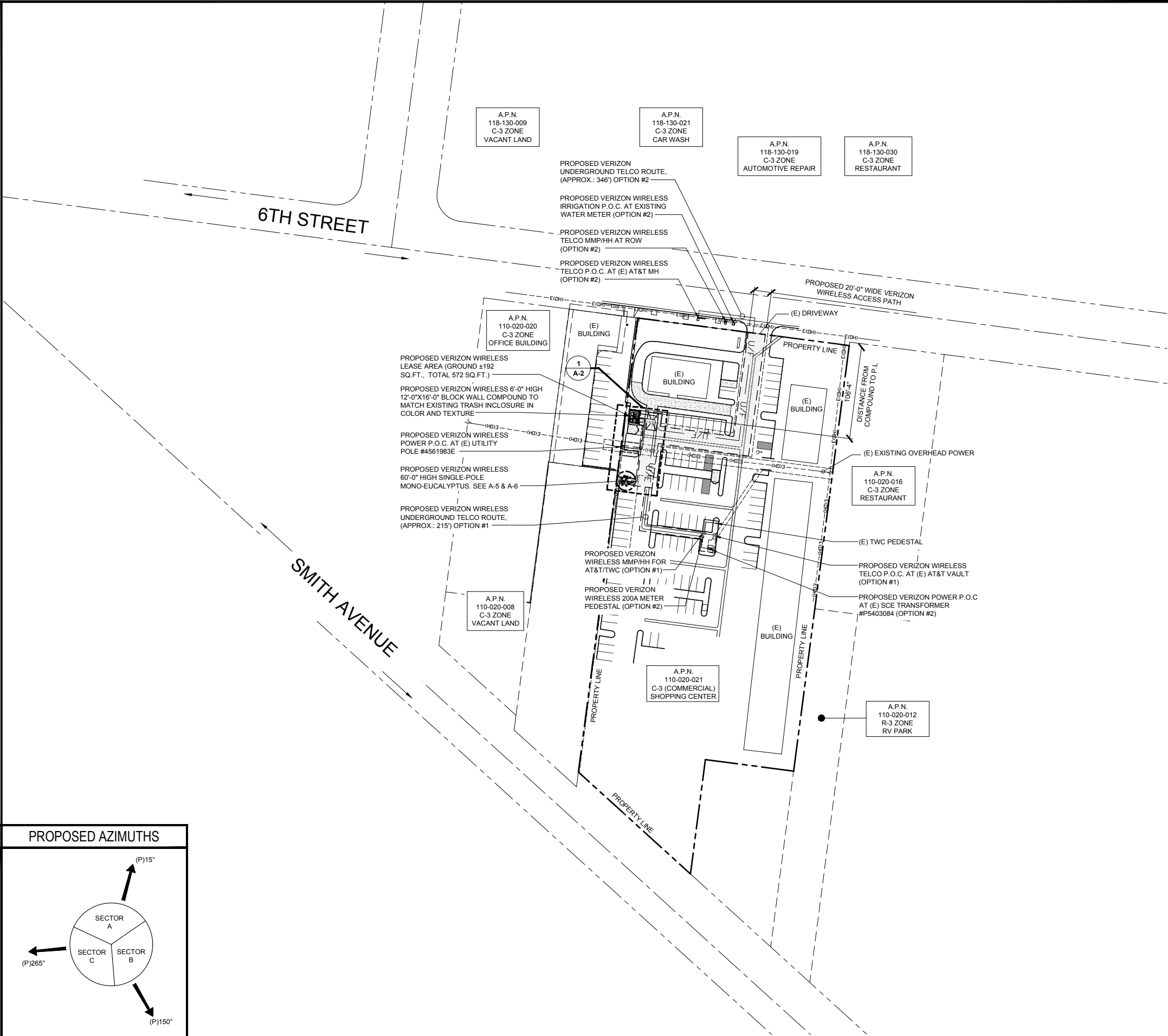
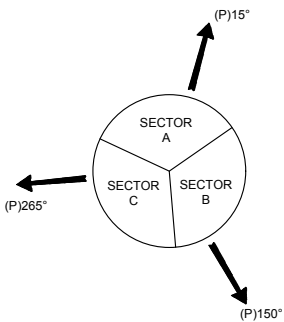
NOTE:
CONTRACTOR TO INSTALL A 17"x30" PULL BOX FOR POWER & TELCO AFTER EVERY 300' OR AFTER EVERY TWO 90° BENDS

NOTE:
REFERENCE SURVEY BY DIAMONDBACK LAND SURVEYING, ON AUGUST 29, 2017, FOR ALL PROPERTY LINES AND EXISTING EASEMENT INFORMATION.

W-T'S SCOPE OF WORK DOES NOT INCLUDE A STRUCTURAL EVALUATION OF THIS TOWER OR STRUCTURE. NEW ANTENNAS SHOWN ON THIS PLAN HAVE NOT BEEN EVALUATED TO VERIFY THE TOWER OR STRUCTURE HAS THE CAPACITY TO ADEQUATELY SUPPORT THESE ANTENNAS. PRIOR TO ANY ANTENNA INSTALLATION, A STRUCTURAL EVALUATION OF THE TOWER OR STRUCTURE, INCLUDING ALL ANTENNA MOUNTING SYSTEMS AND HARDWARE, SHALL BE PERFORMED.

ABBREVIATIONS & SYMBOLS

PROPOSED AZIMUTHS



ISSUE STATUS

REV.	DATE	DESCRIPTION	BY
1	09/21/17	90% ZONING	GC
2	09/29/17	CLIENT COMMENTS	GC
3	10/20/17	100% ZONING	GC
4	11/06/17	AZIMUTH CHANGE	GC
5	04/13/18	PRC STAFF COMMENTS	DYP
6	09/19/18	NEW LOCATION	DYP
7	05/07/19	NEW LOCATION	DYP

W-T

W-T COMMUNICATION
DESIGN GROUP, LLC.

WIRELESS INFRASTRUCTURE
8560 S. Eastern Avenue
Las Vegas, Nevada 89123
PH: (702) 998-1000 FAX: (702) 998-1010
www.wtengineering.com

COPYRIGHT © 2017 W-T COMMUNICATION DESIGN GROUP, LLC
PROJECT#: T1600029

PROPRIETARY INFORMATION

THE INFORMATION CONTAINED IN THIS SET OF DRAWINGS IS PROPRIETARY & CONFIDENTIAL TO VERIZON WIRELESS
ANY USE OR DISCLOSURE OTHER THAN AS IT RELATES TO VERIZON WIRELESS IS STRICTLY PROHIBITED.

verizon

15505 SAND CANYON AVENUE, D1
IRVINE, CA 92618

NOT TO BE USED
FOR CONSTRUCTION

SHERMAN

1380 W. 6TH STREET
CORONA, CA 92882

SHEET TITLE:

OVERALL SITE PLAN

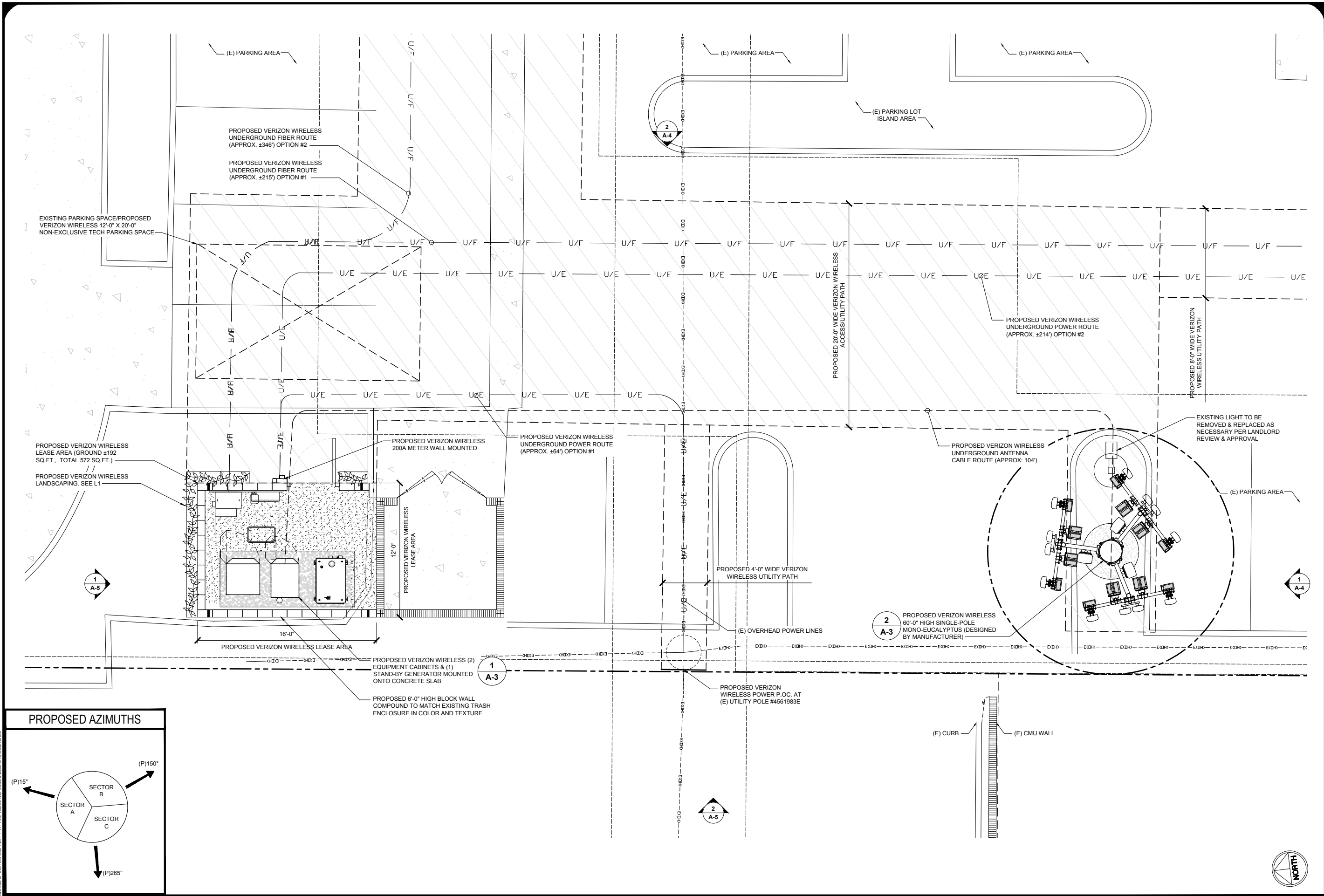
A-1



SCALE: 1" = 60'-0"

EXHIBIT 2

NOTE: THE ORIGINAL SIZE OF THIS PLAN IS 36" X 24". THIS PLOT WILL BE HALF SCALE UNLESS OTHERWISE NOTED.



ENLARGED SITE PLAN

ISSUE STATUS

REV.	DATE	DESCRIPTION	BY
1	09/21/17	90% ZONING	GC
2	09/29/17	CLIENT COMMENTS	GC
3	10/20/17	100% ZONING	GC
4	11/06/17	AZIMUTH CHANGE	GC
5	04/13/18	PRC STAFF COMMENTS	DYP
6	09/19/18	NEW LOCATION	DYP
7	05/07/19	NEW LOCATION	DYP

W-T COMMUNICATION DESIGN GROUP, LLC.
WIRELESS INFRASTRUCTURE
8560 S. Eastern Avenue
Las Vegas, Nevada 89123
PH: (702) 998-1000 FAX: (702) 998-1010
www.wtengineering.com

COPYRIGHT © 2017 W-T COMMUNICATION DESIGN GROUP, LLC
PROJECT#: T1600029

PROPRIETARY INFORMATION
THE INFORMATION CONTAINED IN THIS SET OF DRAWINGS IS PROPRIETARY & CONFIDENTIAL TO VERIZON WIRELESS
ANY USE OR DISCLOSURE OTHER THAN AS IT RELATES TO VERIZON WIRELESS IS STRICTLY PROHIBITED.

15505 SAND CANYON AVENUE, D1
IRVINE, CA 92618

NOT TO BE USED FOR CONSTRUCTION

SHERMAN
1380 W. 6TH STREET
CORONA, CA 92882

SHEET TITLE:
ENLARGED SITE PLAN

A-2