



Library and Recreation Services Department

Prop 68 Per Capita Program – Proposed Projects

Tracy Martin

PROPOSITION 68

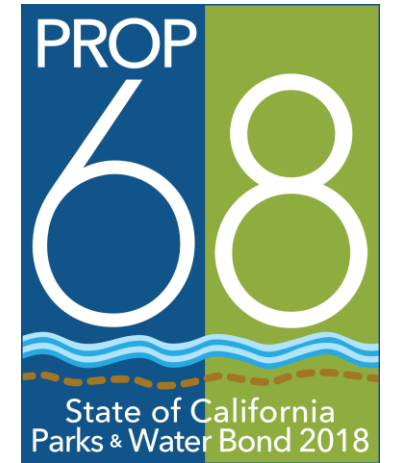
- Parks and Water Bond Act of 2018
- Funding for various programs related to:
 - Habitat conservation
 - Parks
 - Water-related projects
- Approved by voters on June 5, 2018 ballot election
- Two components:
 - Statewide Park Program (SPP)—*application submitted.*
 - Per Capita Program



www.parks.ca.gov

PROP 68 – PER CAPITA PROGRAM

- Non-competitive – based on population
- Funds available for park:
 - Acquisition
 - Improvement
 - Development
- 20% match required if park not located in severely disadvantaged community
- Preliminary estimates of available funds:
 - \$200,000 per City/Park District
 - \$400,000 per County/Regional Park District
 - Supplemental funds (smaller cities in larger counties)
 - Amount unknown



www.parks.ca.gov

CHALLENGES AND UPCOMING ACTIVITIES

- Park inventory and assessment
- Coordinating upgrades with ADA Projects
 - Surfacing to entry/exit points of at least 50% of elevated level play components
- Prioritizing needs vs. Funding availability



PROJECTS FOR CONSIDERATION



- Tehachapi Park Playground
- Creste Verde Park Playground
- Promenade Park Playground
- Butterfield Park Playground
- River Road Park Playground

TEHACHAPI PARK PLAYGROUND

- Neighborhood park (2.98 acres)
- South of McKinley, North of Promenade
- Built in 1994 – 25 years old
- No replacement parts available
- Primary park amenity
- ADA Improvements (Year 3)
- Resident requests for replacement



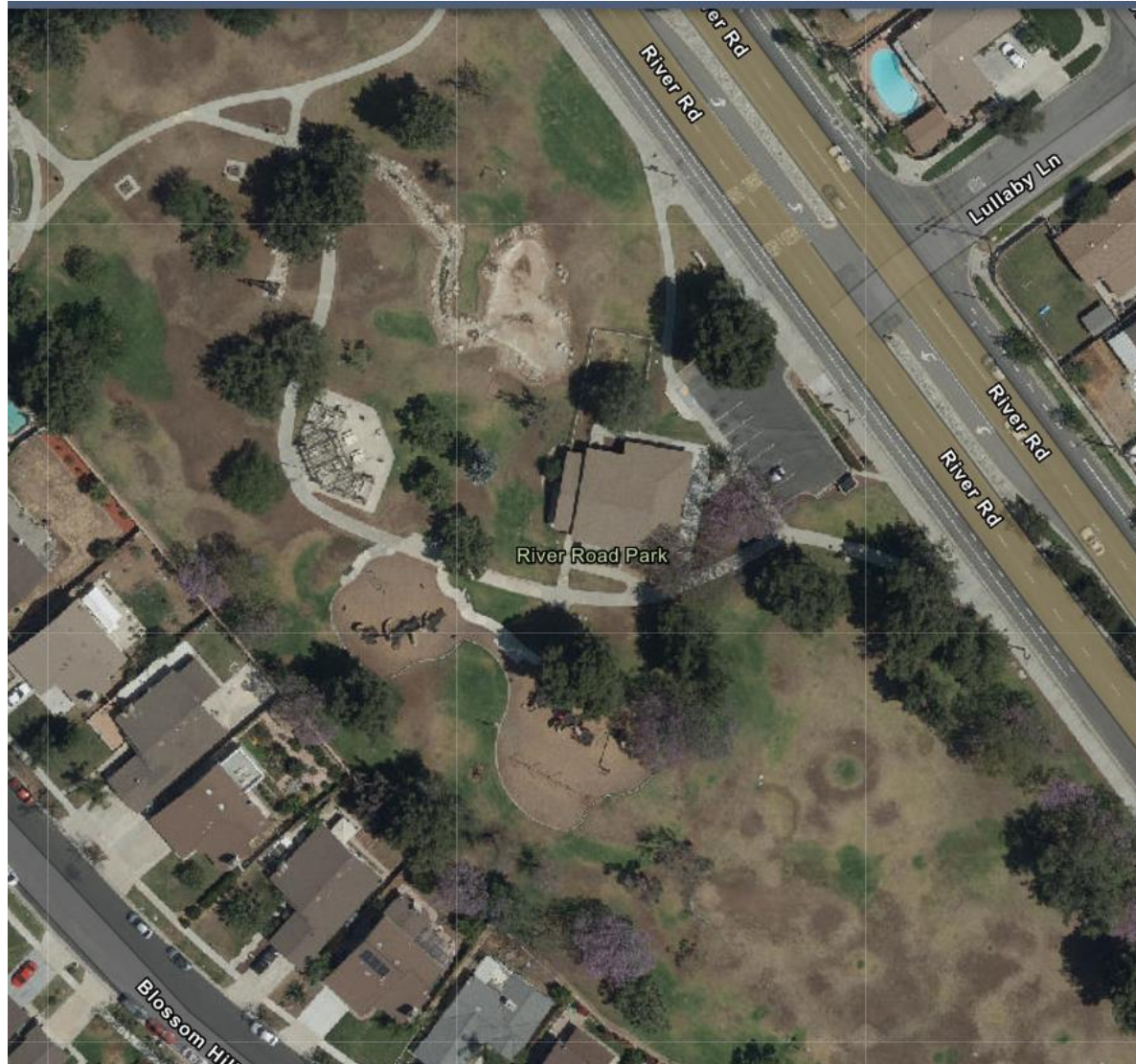
BUTTERFIELD PARK PLAYGROUND



- Regional park (43.50 acres)
- Built in 1997 – 22 years old
- ADA Improvements (Year 5)



RIVER ROAD PARK PLAYGROUND



- Neighborhood park (5.57 acres)
- Built in 1996 – 23 years old
- ADA Improvements (Year 5)



CRESTE VERDE PARK PLAYGROUND



- Neighborhood park (5.07 acres)
- North of Promenade, East of Parkridge
- Built in 1996 – 23 years old
- No replacement parts available
- ADA Improvements (Year 2)



PROMENADE PARK PLAYGROUND



- Community park (18.86 acres)
- Built in 1998 - 21 years old
- ADA Improvements (Year 1)
 - ADA surfacing cost estimate = \$40,000
- Manufacturer recommended replacement 3-5 years

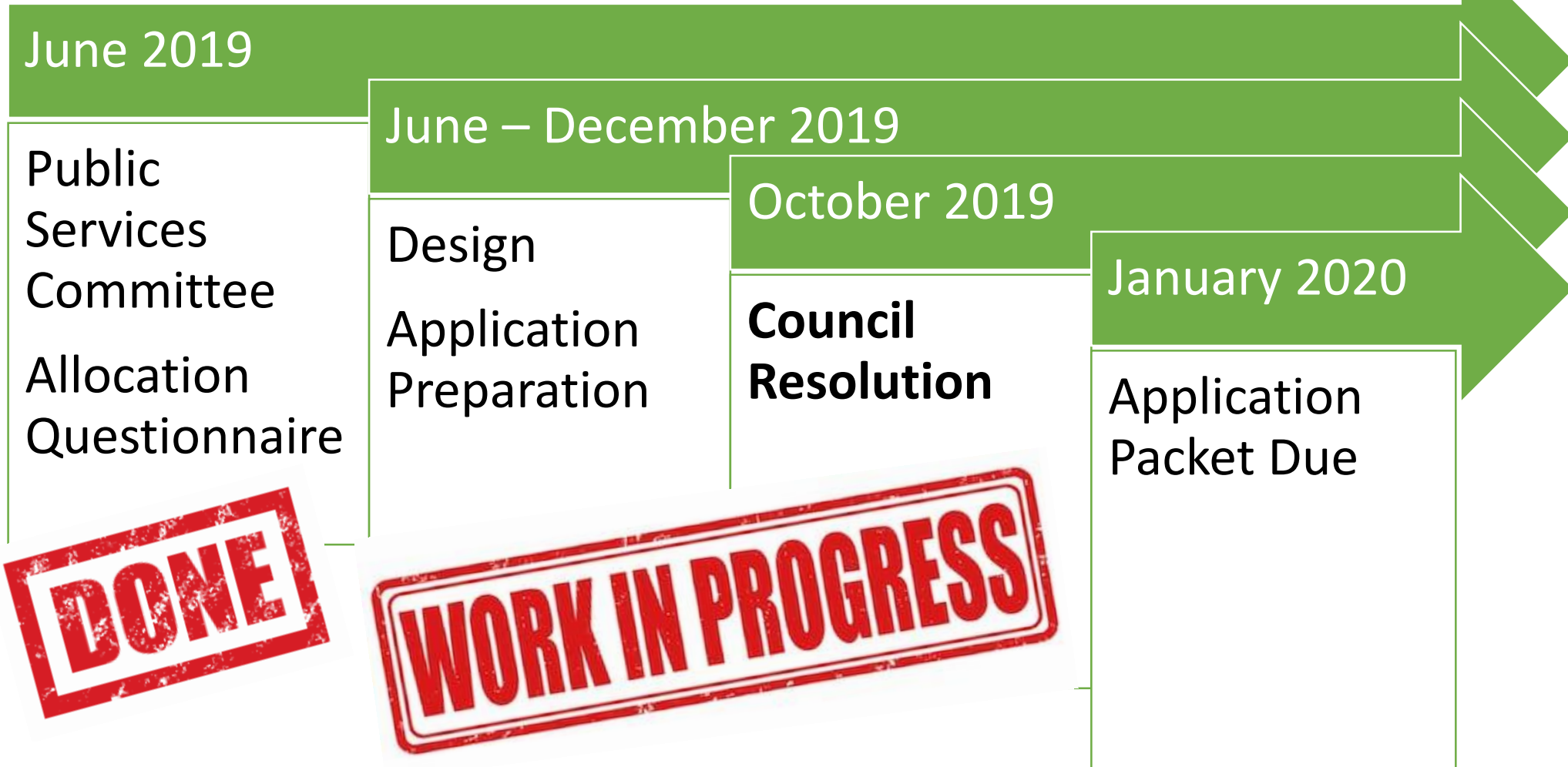


RECOMMENDATION

Priority	Park Site	ADA Year	Age	Cost	Replacement Parts Available?	Park Type
1	Tehachapi	3	25	\$	No	Neighborhood
2	Creste Verde	2	23	\$	No	Neighborhood
3	Promenade	1	21	\$\$\$	No	Community
4	Butterfield	5	22	\$\$	Yes	Regional
5	River Road	5	23	\$\$\$	Yes	Neighborhood

TIMELINE AND NEXT STEPS

Per Capita Program



QUESTIONS?



(951) 817-5880



Tracy.Martin@CoronaCA.gov



www.CoronaCA.gov



www.CoronaCA.gov



Get the info you want straight to your inbox, sign up for eNotifications at www.CoronaCA.gov/Subscribe