

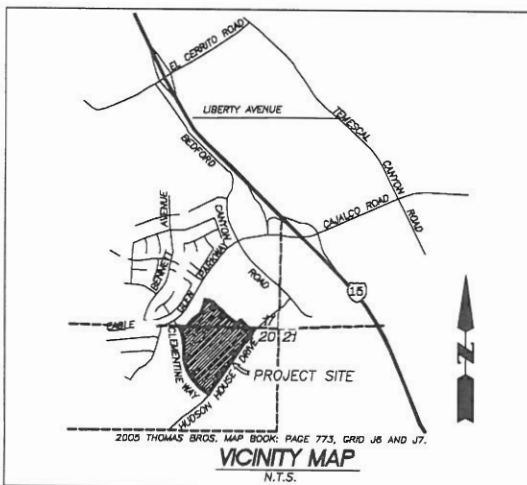
NUMBERED LOTS: 45
 LETTERED LOTS: 17
 ACREAGE IN NUMBERED LOTS: 33.047 AC.
 ACREAGE IN LETTERED LOTS: 20.639 AC.
 TOTAL ACREAGE: 53.746 AC.

SHEET INDEX

- # INDICATES SHEET NUMBER
 --- INDICATES SHEET BOUNDARY

EASEMENT NOTES

- 1 A STORM DRAIN EASEMENT AS SHOWN AND DEDICATED ON TRACT 36294, RECORDED JULY 13, 2017, IN MAP BOOKS 456 PAGES 23 - 38.
- 2 A DRAINAGE EASEMENT AS SHOWN AND DEDICATED ON TRACT 36294, RECORDED JULY 13, 2017, IN MAP BOOKS 456 PAGES 23 - 38.
- 3 AN EASEMENT FOR PUBLIC WATER, RECLAIMED WATER, SEWER, STREET LIGHT, DRAINAGE, AND PUBLIC UTILITY PURPOSES TOGETHER WITH THE RIGHT OF INGRESS AND EGRESS FOR SERVICE AND EMERGENCY VEHICLES AND PERSONNEL AS SHOWN AND DEDICATED ON TRACT 36294, RECORDED JULY 13, 2017, IN MAP BOOKS 456 PAGES 23 - 38.
- 4 AN EASEMENT FOR PUBLIC WATER, RECLAIMED WATER, SEWER, STREET LIGHT, DRAINAGE, AND PUBLIC UTILITY PURPOSES TOGETHER WITH THE RIGHT OF INGRESS AND EGRESS FOR SERVICE AND EMERGENCY VEHICLES AS SHOWN AND DEDICATED HEREON.
- 5 AN EASEMENT FOR PUBLIC UTILITY PURPOSES AS SHOWN AND DEDICATED HEREON.
- 6 A DRAINAGE EASEMENT, AS SHOWN AND DEDICATED TO THE PUBLIC HEREON.
- 7 A STORM DRAIN EASEMENT, AS SHOWN AND DEDICATED TO THE PUBLIC HEREON.
- 8 AN EASEMENT FOR PUBLIC SEWER PURPOSES AS SHOWN AND DEDICATED HEREON.
- 9 AN EASEMENT TO THE PUBLIC FOR ACCESS PURPOSES FOR INGRESS AND EGRESS FOR THE CONSTRUCTION AND MAINTENANCE OF DRAINAGE FACILITIES OVER LOT 12 AND LOTS "C", "L", "N" AND "R", DEDICATED TO THE PUBLIC HEREON.
- 11 A TRAIL EASEMENT FOR PUBLIC USE, AS SHOWN AND DEDICATED HEREON.
- 12 AN EASEMENT FOR PUBLIC WATER PURPOSES SHOWN AND DEDICATED HEREON.
- 13 AN EASEMENT FOR LANDSCAPE PURPOSES, AS SHOWN AND RETAINED HEREON.



NOTES:
 SEE SHEET 2 FOR NOTARY ACKNOWLEDGEMENTS.
 SEE SHEET 3 FOR BOUNDARY INFORMATION AND SURVEYOR'S NOTES.
 SEE SHEET 4 FOR ADDITIONAL BOUNDARY DETAIL INFORMATION, BASIS OF BEARING AND DATUM STATEMENT.
 SEE SHEET 6 THROUGH 16, INCLUSIVE, FOR LOT MAPS.
 SEE SHEET 17 AND 18 FOR LANDSCAPE EASEMENT INFORMATION.

IN THE CITY OF CORONA, COUNTY OF RIVERSIDE, STATE OF CALIFORNIA

TRACT NO. 37030

BEING A SUBDIVISION OF LOTS 2, 3, 4, 5, 6, 7, J AND U AND A PORTION OF LOT 9 OF TRACT MAP NO. 36294, FILED IN BOOK 456, PAGES 23 THROUGH 38, INCLUSIVE, OF MAPS, RECORDS OF RIVERSIDE COUNTY, STATE OF CALIFORNIA

HUNSAKER AND ASSOCIATES, INC. AUGUST, SEPTEMBER & NOVEMBER, 2015.
 FOR CONDOMINIUM PURPOSES



0 75 150 300
 SCALE: 1" = 150'

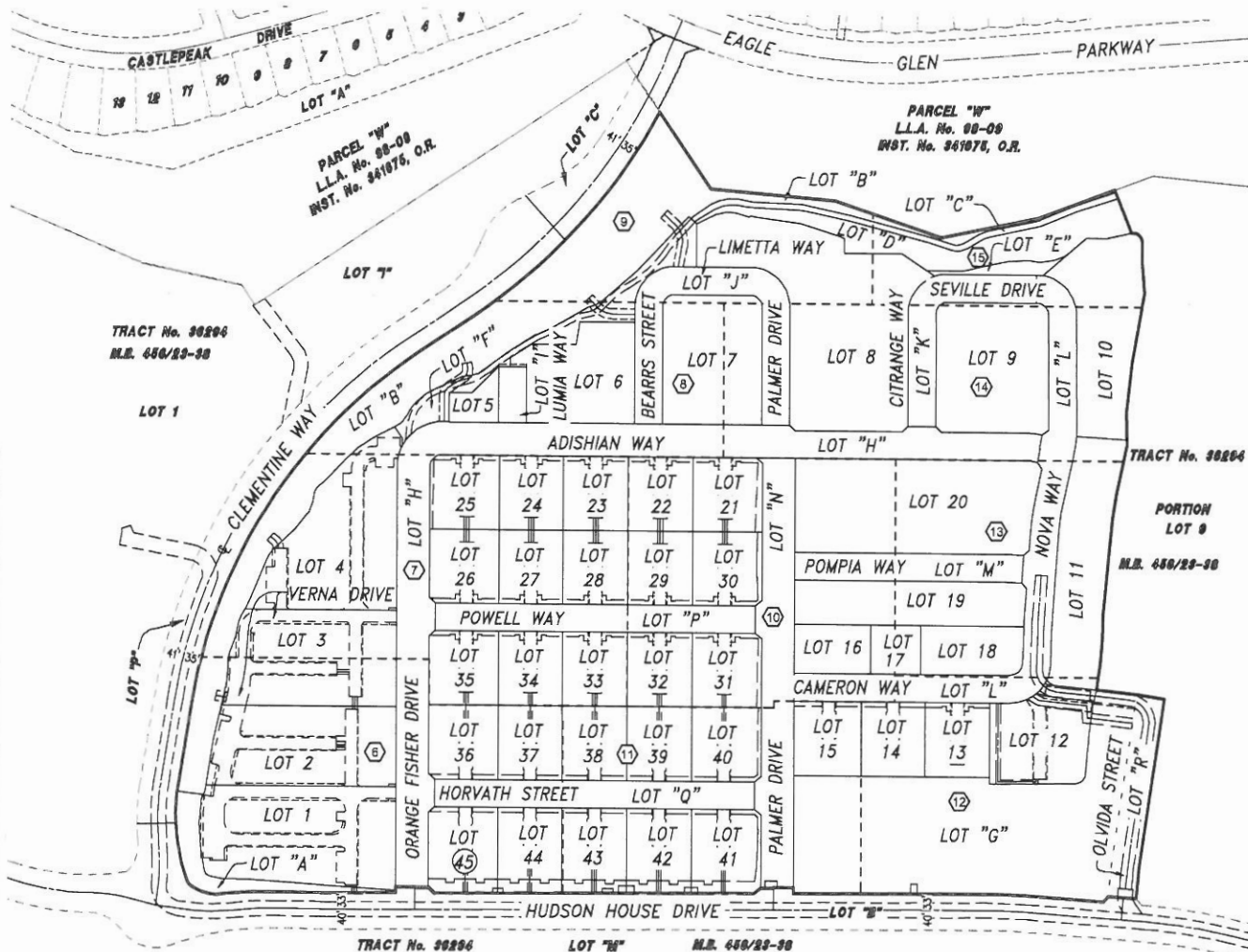


EXHIBIT "A"