

CITY OF CORONA

LINCOLN PARK PLAYGROUND IMPROVEMENTS

S LINCOLN AVE AT CITRON ST, CORONA, CA

CITY OF CORONA

MAINTENANCE SERVICES DEPARTMENT
755 PUBLIC SAFETY WAY
CORONA, CA 92880
PHONE: (951) 817-5880
CONTACT PERSON: TRACY MARTIN

CITY DEPARTMENT

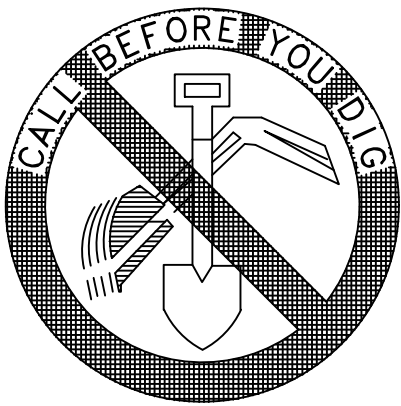


310 NORTH JOY STREET | CORONA, CA 92879
T: 951.737.1124 | F: 951.737.6551



Contact: Shannon Karlson

LANDSCAPE ARCHITECT



DIG ALERT

DIAL TOLL FREE
811

AT LEAST TWO DAYS
BEFORE YOU DIG

UNDERGROUND SERVICE ALERT OF SOUTHERN CALIFORNIA

HOLD HARMLESS & INDEMNIFICATION CLAUSE

Contractor agrees that he shall assume sole responsibility for job site conditions during the course of construction of this project, including safety of all persons and property; that this requirement shall apply continuously and not be limited to normal working hours, and hold the city and the landscape architect harmless from any and all liability real or alleged, in connection with the performance of work on this project, excepting for liability arising from the sole negligence of the owner, city or landscape architect.

TOTAL TURF SQUARE FOOTAGE	TOTAL GROUND COVER & SHRUB SQUARE FOOTAGE	TOTAL HARDSCAPE SQUARE FOOTAGE	TOTAL ROCKSCAPE SQUARE FOOTAGE	TOTAL WORKSITE SQUARE FOOTAGE AND ACREAGE	TREE COUNT TOTAL
0	86,668	6,000	0	6,000	0

PLANTING TOTALS

1. THE CONTRACTOR SHALL OBTAIN A CONSTRUCTION PERMIT FROM THE CITY OF CORONA PRIOR TO CONSTRUCTION.
2. THE CONTRACTOR SHALL CALL FOR A PRE-CONSTRUCTION MEETING WITH MAINTENANCE SERVICES INSPECTION PRIOR TO MOBILIZATION, PHONE (951) 736-2234, 48 HOURS PRIOR TO STARTING WORK.
3. THE CONTRACTOR SHALL CALL UNDERGROUND SERVICE ALERT (811) TWO DAYS PRIOR TO ANY EXCAVATION.
4. ALL GRADING SHALL BE ACCOMPLISHED BY SEPARATE GRADING PLAN AND PERMIT, OBTAINED FROM PUBLIC WORKS DEPARTMENT.
5. HOURS OF OPERATION ARE 8:00AM TO 4:00PM - MONDAY THROUGH FRIDAY, FOR ALL PARK CONSTRUCTION.
6. SEPARATE PERMITS SHALL BE REQUIRED FOR ANY IMPROVEMENT WORK IN THE PUBLIC RIGHT-OF-WAY.
7. REPAIR OR REPLACE ALL DAMAGED OR ALTERED PUBLIC IMPROVEMENTS AS REQUIRED BY THE CITY ENGINEER IN THE FIELD.
8. ALL SURVEY MONUMENTS SHALL BE PROTECTED AND PERPETUATED IN PLACE. ANY DISTURBED OR COVERED MONUMENTS SHALL BE RESET BY A QUALIFIED REGISTERED CIVIL ENGINEER OR A LICENSED SURVEYOR AT THE DIRECTION OF THE CITY ENGINEER.
9. IT SHALL BE THE CONTRACTOR'S RESPONSIBILITY TO VERIFY THE LOCATION OF ALL UTILITIES OR STRUCTURE ABOVE OR BELOW GROUND, SHOWN OR NOT SHOWN ON THESE PLANS. INCLUDING BUT NOT LIMITED TO: LIGHTING, ELECTRICAL WIRING, CATCH BASINS/DRAINS, DRAIN PIPES AND SLEEVES. CONTRACTOR WILL BE HELD RESPONSIBLE FOR ALL DAMAGE TO ANY UTILITIES OR STRUCTURES CAUSED BY HIS OPERATION.
10. CONTRACTOR TO REPAIR AND OR REPLACE DAMAGE TO EXISTING FACILITIES NOT SCHEDULED FOR REMOVAL TO THE SATISFACTORY OF THE CITY REPRESENTATIVE.
11. IRRIGATION IS SHOWN SCHEMATICALLY CONTRACTOR TO VERIFY LOCATION OF MAINLINE, VALVES, LATERALS, AND EMITTERS IN FIELD PRIOR TO COMMENCEMENT OF DEMOLITION.

GENERAL NOTES

DEMOLITION:
THE CITY OF CORONA WILL DEMO THE EXISTING PLAYGROUND, CURB AND CONCRETE.

INSTALLATION:
THE CITY WILL COMPACT SUBGRADE, INSTALL SUMP, FOOTINGS AND THE PLAYGROUND EQUIPMENT

THE CONTRACTOR IS RESPONSIBLE FOR NEW PLAYGROUND CURB, AGGREGATE BASE FOR PLAYGROUND SURFACING, PLAYGROUND SURFACING, ADA ACCESSIBLE CONCRETE PAD FOR THE DRINKING FOUNTAIN, INSTALLATION OF THE DRINKING FOUNTAIN*, CONCRETE PATCH TO EXISTING PATH OF TRAVEL TO THE PLAYGROUND AND IMPACTED LANDSCAPE REPAIR

* THE CITY OF CORONA WILL PROVIDE THE DRINKING FOUNTAIN FOR CONTRACTOR INSTALLATION.

SCOPE OF WORK

Sheet List Table		
Sheet Number	Sheet Title	Sheet Description
1	TITLE SHEET	LT-1
2	NOTE AND DETAILS	LD-1
3	HARDSCAPE SURFACING	LH-1

SHEET INDEX



310 NORTH JOY STREET | CORONA, CA 92879
T: 951.737.1124 | F: 951.737.6551
PROJECT NUMBER: 00010517

Designed by	Drawn by	Checked by
XH,SK	XH	SK,SLs
PLANS	PREPARED	UNDER SUPERVISION OF
8/9/2019		
Date		

Reference Plans for these Improvements	Date	By	REVISIONS	App'd

BENCH MARK
Scale

Engineering
Parks

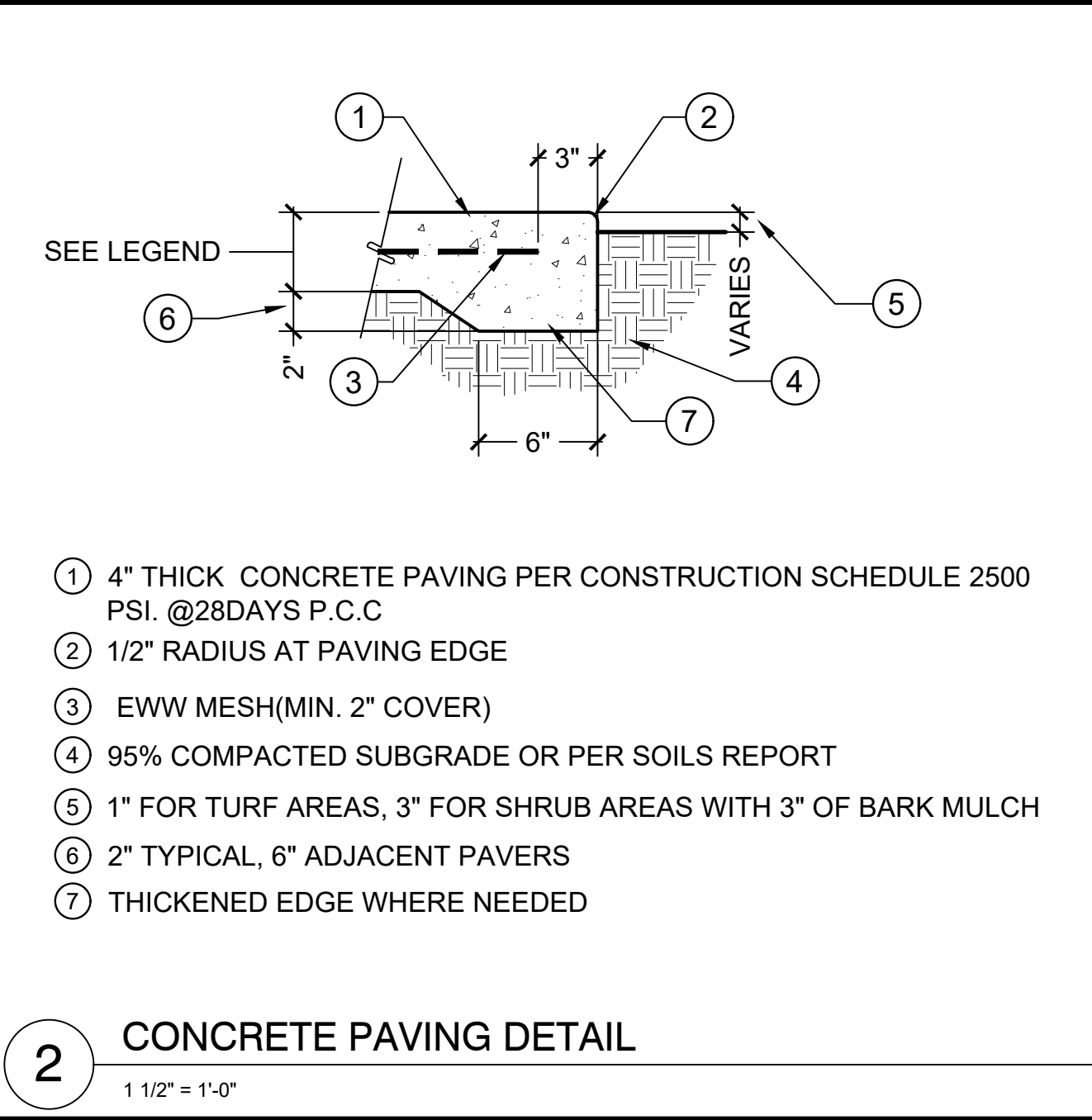
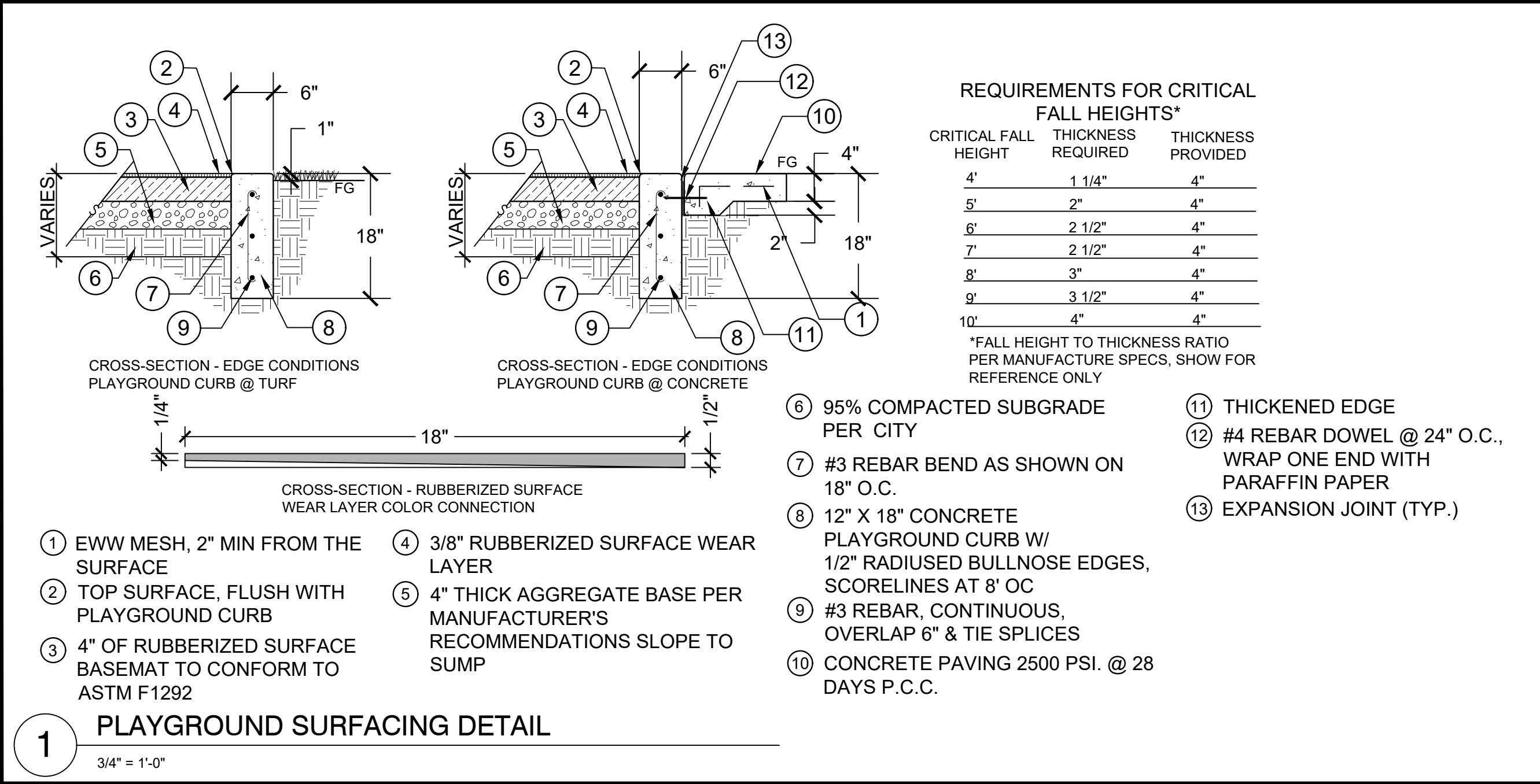
DocuSigned by:
Tom Koper
Tom Koper
Acting Public Works Director
City Engineer
RCE No. 50258

Date
10/30/2019

CITY OF CORONA
LANDSCAPE MAINTENANCE DISTRICT
LANDSCAPE PLANS

PROJECT: LINCOLN PARK
PLAYGROUND IMPROVEMENTS
SHEET TITLE: TITLE SHEET

Drawing No.
LT-1
Sh 1 of 3



Halsey Taylor
SPECIFICATIONS

Halsey Taylor Endura II Tubular Outdoor Fountain
Tri-Level Pedestal Non-Filtered Non-Refrigerated
Model 4430

PRODUCT SPECIFICATIONS

Halsey Taylor Endura II Tubular Outdoor Fountain, Tri-Level Pedestal Non-Filtered Non-Refrigerated. Features shall include 316 Stainless, Heavy Duty Vandal Resistant. Furnished with Vandal Resistant bubbler. Front Button activation. Product shall be Floor Mount/Freestanding, for Outdoor applications, serving 3 station(s). Unit shall be lead-free design which is certified to NSF/ANSI 61 & 372 (lead free) and meets Federal and State low-lead requirements.

Special Features: 316 Stainless, Heavy Duty Vandal Resistant
Finish: Beige (BGE), Black (BLK), Blue (BLU), Brown (BRN), Evergreen (EVG), Gray (GRY), Orange (ORN), Purple (PUR), Red (RED), Terracotta (TER), White (WHT), Yellow (YLW)
Bubbler Style: Vandal Resistant
Activation by: Front Button
Mounting Type: Floor Mount/Freestanding
Chilling Option: Non-refrigerated
Approx. Shipping Weight: 230 lbs.
Installation Location: Outdoor
No. of Stations Served: 3

Base material constructed from marine-grade 316 stainless steel provides the ultimate corrosion protection from even the most corrosive elements.

AMERICAN PRIDE - A LIFETIME TRADITION.
Like your family, the Elgay family has values and traditions that endure. For almost a century, Elgay has been a family-owned and operated company, providing thousands of jobs that support our families and communities.

PRODUCT COMPLIANCE
ADA & ICC A117.1
ASME A112.19.3/CSA B45.4
Buy American Act
NSF/ANSI 61 & 372 (lead free)

Installation Instructions (PDF)
Warranty (PDF)

OPTIONAL ACCESSORIES
4471LHB - Locking Hose Bib
97890C - Accessory - Direct Bury Adaptor

Part: _____ QTY: _____
Project: _____
Contact: _____
Date: _____
Notes: _____
Approval: _____

In keeping with our policy of continuing product improvement, Halsey Taylor reserves the right to change product specifications without notice. Please visit HalseyTaylor.com for the most current version of Halsey Taylor product specification sheets. This specification describes a Halsey Taylor product with design, quality, and functional benefits to the user. When making a comparison of other producers' offerings, be certain these features are not overlooked.

Halsey Taylor REV 07192019 4430 © 2019 Page 1
2222 Camden Court Oak Brook, IL 60523 4430_spec.pdf

Halsey Taylor
SPECIFICATIONS

Halsey Taylor Endura II Tubular Outdoor Fountain
Tri-Level Pedestal Non-Filtered Non-Refrigerated
Model 4430

MOUNTING INSTRUCTIONS and PLUMBING CONNECTIONS
Provide solid, well-drained surface to mount pedestal fountain (concrete pad recommended) with adequate support (300lb. load minimum). (6) 3/8 minimum fasteners (not included) should be attached firmly to mounting surfaces in order to secure unit. (Refer to rough-in diagram)

Locate and install plumbing through ground as required.
NOTE: Unit is not furnished with service valve.

Position pedestal over plumbing and secure base to fasteners. Remove access panels and connect supply and water lines. Turn on water supply and check for leaks. Reassemble access panels to pedestal.

Trap and service not included.

OPERATING PRESSURES:
Supply water 20 - 105 psi maximum.

TOP VIEW

BACK VIEW

SIDE & FRONT VIEWS

A = 3/8" O.D. Unplated copper tube connect shut off valve by others
B = Access Panel (8" X 10")
C = Removable bottom cover

* ADA Requirement.

In keeping with our policy of continuing product improvement, Halsey Taylor reserves the right to change product specifications without notice. Please visit HalseyTaylor.com for the most current version of Halsey Taylor product specification sheets. This specification describes a Halsey Taylor product with design, quality, and functional benefits to the user. When making a comparison of other producers' offerings, be certain these features are not overlooked.

Halsey Taylor REV 07192019 4430 © 2019 Page 2
2222 Camden Court Oak Brook, IL 60523 4430_spec.pdf

4430_FTN_A LK4430_FTN_A

ITEMIZED PARTS LIST

ITEM NO.	PART NO.	DESCRIPTION
1	98694C	Kit - Drain Elbow/Gasket/Nut/Washer
2	29467C	Basin
3	0000000325	Kit - Drain Plug & Gasket
4	99530C	Kit - Regulator/Holder/Nut
5	97446C	Kit - Bubbler (VR)
6	55996C	In - Line Strainer
7	66346C	Drain Tube
8	40551C	Tailpipe
9	98693C	Kit - Drain Adapter/Gasket/Nut/Washer
10	70852C	Tee - 3/8"
11	97247C	Kit - VR Torx Screws/Bit
12	1000003812"	Access Panel
13	1000003813"	Bottom Cover
14	45734C	Drain Tube
15	98692C	Kit - Push Button w/Blank Nameplate
16	1000003894	Kit - Push Button w/LK4430 Nameplate
	1000003895	Kit - Push Button w/LK4430 Nameplate
	56092C	Poly Tubing (Cut To Length)

*select color option to complete part number

***FINISH COLOR OPTIONS - Choose color option to complete your model number, add as suffix example: 4430EVG**

Matte finish: ☐ Evergreen = EVG

Gloss finish: ☐ Beige = BGE ☐ Gray = GRY ☐ Terracotta = TER
☐ Black = BLK ☐ Orange = ORN ☐ White = WHT
☐ Blue = BLU ☐ Purple = PUR ☐ Yellow = YLW
☐ Brown = BRN ☐ Red = RED

Vandal-Resistant Bubbler FIG. 4

FOR PARTS CONTACT YOUR LOCAL DISTRIBUTOR OR CALL 1.800.834.4616

PRINTED IN U.S.A.

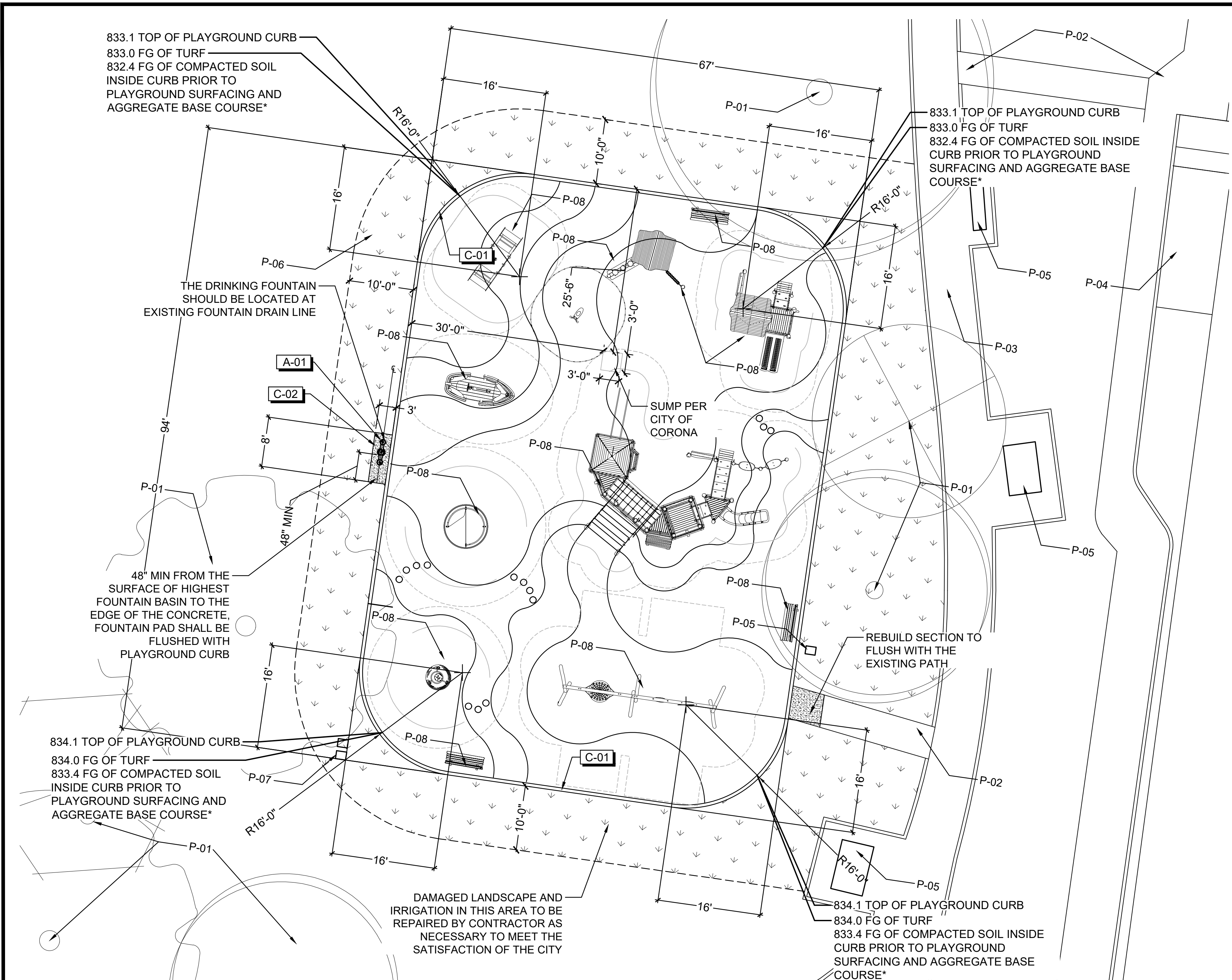
1000004244 (Rev. B - 01/18) PAGE 4

3 DRINKING FOUNTAIN DETAIL

NTS

UNDERGROUND SERVICE ALERT
CALL 1-800-834-4616
TOLL FREE 811
TWO WORKING DAYS BEFORE YOU DIG





PLAYGROUND CURB, FOUNTAIN PAD AND SIDEWALK REPAIR LAYOUT

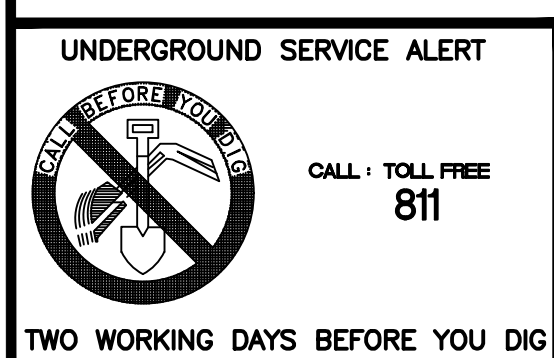
THE PLAYGROUND LAYOUT IS SHOWN FOR REFERENCE ONLY.

AMENITIES SCHEDULE						
SYMBOL	DESCRIPTION	QTY	MODEL #	MANUFACTURER	COLOR	REMARKS
A-01	HALSEY TAYLOR ENDURA II TUBULAR OUTDOOR FOUNTAIN, TRI-LEVEL PEDESTAL NON-FILTERED NON-REFRIGERATED	1	4430BLU	HALSEY TAYLOR DRINKING FOUNTAIN	BLUE	CONNECT THE FOUNTAIN TO EXISTING DRAIN LINE

CONSTRUCTION SCHEDULE					
CODE	DESCRIPTION	DETAIL	MATERIAL	COLOR/FINISH	REMARKS
C-01	12"WIDE X18" DEEP PLAYGROUND CURB	1/LD-1	CONCRETE	NATURAL GRAY/ SMOOTH	SCORE JOINTS AT 8' O.C.
C-02	4" THICK CONCRETE PAD	2/LD-1	CAST IN PLACE CONCRETE	NATURAL GRAY WITH MEDIUM BROOM FINISH	

HARDSCAPE NOTES:

1. ALL CONCRETE CONSTRUCTION SHALL BE 2,500 PSI AT 28 DAYS CONCRETE
2. ALL PAVING SHALL BE SLOPED TO DRAIN AT A MIN. 1% AWAY FROM STRUCTURES. THE THE CONTRACTOR IS RESPONSIBLE FOR ALL PERMITS AND INSPECTION SCHEDULES
3. THE PLANS ARE DIAGRAMMATIC, THE CONTRACTOR SHALL NOTIFY THE LANDSCAPE ARCHITECT OF CONFLICTS BETWEEN THE PLANS AND THE SITE CONDITIONS
4. INSTALL ALL AMENITIES PER MANUFACTURER INSTRUCTIONS AND SPECIFICATIONS
5. PLAYGROUND SURFACING QUANTITIES LISTED ARE FOR REFERENCE ONLY.



* GRADING NOTES

1. ROUGH GRADE OF COMPACTED SOIL AND INSTALLATION OF PLAYGROUND AND FOOTINGS TO BE PROVIDED BY CITY PRIOR TO CONSTRUCTION OF PLAYGROUND CURB AND SURFACING BY CONTRACTOR.

2. ALLOW FOR 4-3/8" PLAYGROUND SURFACING AND WEAR COURSE AND 4" FOR COMPACTED AGGREGATE BASE COURSE MINIMUM.

3. CONTRACTOR TO ALLOW FOR FINISH GRADING OF SOIL AS NECESSARY TO ACHIEVE 2% MAXIMUM SLOPE AND 2% MAXIMUM CROSSGRADE FINISH SURFACE OF PLAYGROUND SURFACING.

4. PLAYGROUND SURFACING AND ANY ADJACENT
CONCRETE WORK TO BE FLUSH WITH PLAYGROUND CURB.
TURF TO BE 1" BELOW TOP OF PLAYGROUND CURB.

5. INCREASE DEPTH OF AGGREGATE BASE COURSE AS NECESSARY TO ALLOW FOR FINISH GRADE OF NATIVE SOIL AT 1% MINIMUM TOWARDS SUMP. PLAYGROUND SURFACING AND WEAR COURSE SHALL BE A CONSISTENT 4-3/8".

6. ALL GRADES SHOWN ARE FOR REFERENCE ONLY BASED ON AS- BUILT PLANS DATED FEB. 1990. ANY GRADES SHOWN ARE INTENDED FOR CONCEPTUAL GUIDANCE ONLY. ACTUAL GRADING AND ELEVATIONS SHALL BE BASED ON FIELD CONDITIONS AND SURVEY DATA.

PROTECT IN PLACE

CODE	DESCRIPTION
P-01	EXISTING TREE PROTECT IN PLACE
P-02	EXISTING CONCRETE PATHWAY
P-03	EXISTING DECOMPOSED GRANITE PATHWAY WITH CONCRETE MOW CURB
P-04	EXISTING ADA STALL AND STRIPING
P-05	EXISTING EXERCISE EQUIPMENT AND SITE FURNISHING
P-06	EXISTING LANDSCAPE
P-07	EXISTING IRRIGATION EQUIPMENT
P-08	PLAYGROUND EQUIPMENT AND BENCHES, INSTALLED BY CITY

PROTECT IN PLACE NOTE:

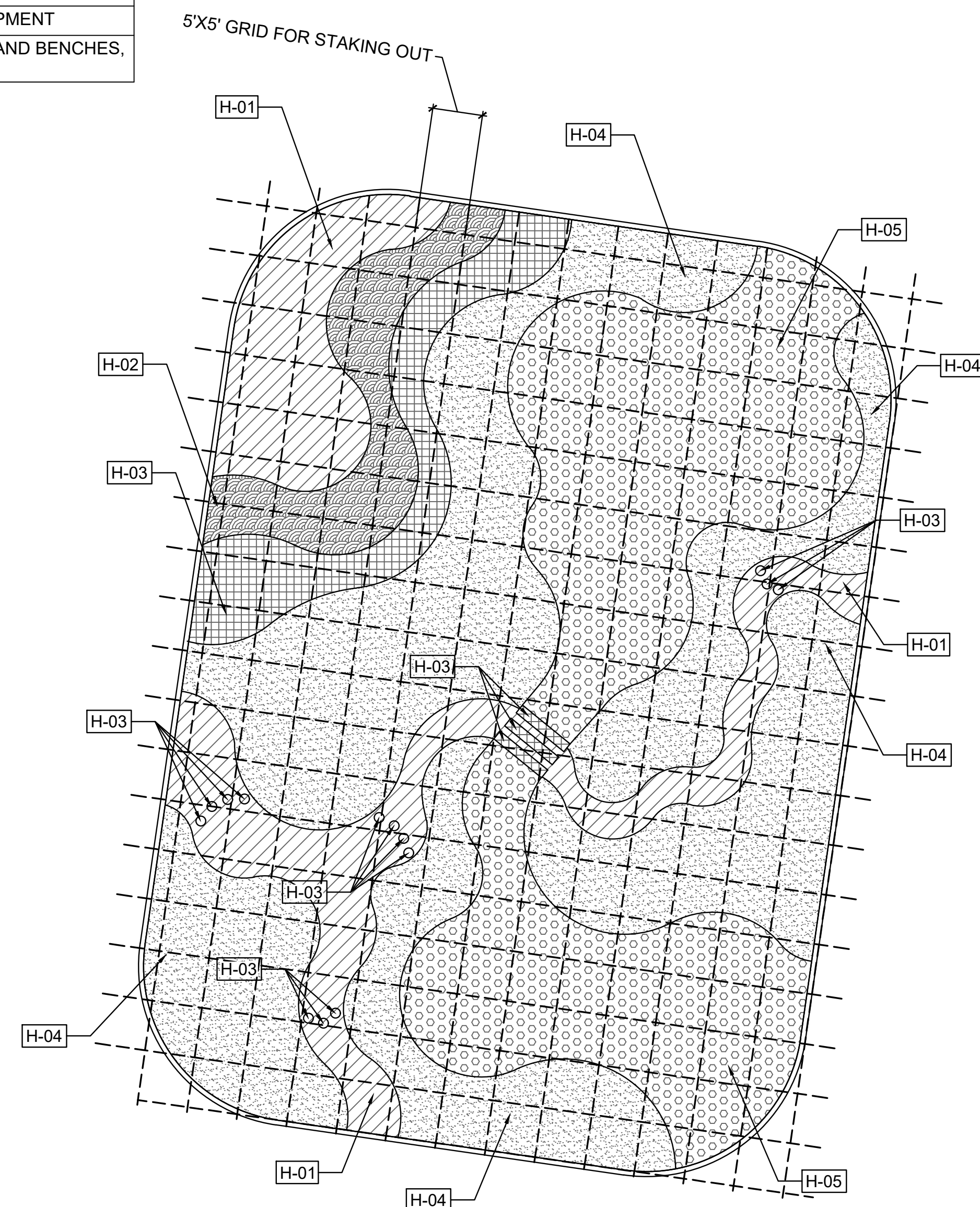
1. ANY DAMAGE RESULTING FROM THE CONSTRUCTION PROCESS OR PROCEDURES SHALL BE REPAIRED OR REPLACED TO THE SATISFACTION OF THE LANDSCAPE ARCHITECT OR CITY REPRESENTATIVE.

EXISTING HARDSCAPE NOTES:

1. ALL EXISTING HARDSCAPE SHALL BE PROTECTED IN PLACE UNLESS OTHERWISE NOTED.

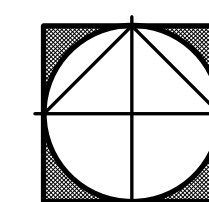
EXISTING TREE NOTES:

1. ALL EXISTING TREES SHALL BE PROTECTED IN PLACE.
2. NO MECHANICAL EQUIPMENT IS PERMITTED WITHIN 5' OF EXISTING TREES.

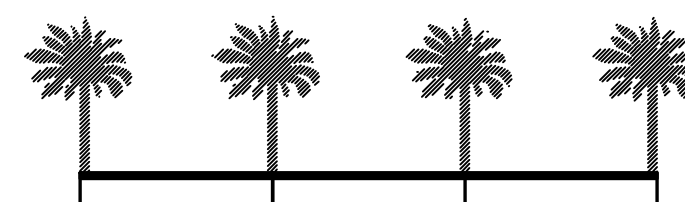


PLAYGROUND SURFACING LAYOUT

HARDSCAPE_SURFACING_SCHEDULE						
	CODE	DESCRIPTION	QTY	DETAIL	COLOR	MANUFACTURER
	H-01	4" THICK PLAY SURFACE "SEA & MOAT" (ALIPHATIC URETHANE BINDER)	914 SF	1/LD-1	75% ROYAL BLUE + 25% SKY BLUE MIX	SURFACE AMERICA OR APPROVED EQUAL
	H-02	4" THICK PLAY SURFACE "SEASIDE" (ALIPHATIC URETHANE BINDER)	288 SF	1/LD-1	75% SKY BLUE + 25% TEAL MIX	SURFACE AMERICA OR APPROVED EQUAL
	H-03	4" THICK PLAY SURFACE "BEACH" (ALIPHATIC URETHANE BINDER)	340 SF	1/LD-1	75%EGGSHELL + 25%BEIGE	SURFACE AMERICA OR APPROVED EQUAL
	H-04	4" THICK PLAY SURFACE "LAND" (ALIPHATIC URETHANE BINDER)	2,625 SF	1/LD-1	75%HUNTERGREEN + 25%BRIGHT GREEN	SURFACE AMERICA OR APPROVED EQUAL
	H-05	4" THICK PLAY SURFACE "PATH" (ALIPHATIC URETHANE BINDER)	1,777 SF	1/LD-1	75%BROWN + 25%BEIGE	SURFACE AMERICA OR APPROVED EQUAL




NORTH



0' 10' 20' 30'



Designed by	Drawn by	Checked by
XH,SK	XH	SK,SLS
PLANS PREPARED UNDER SUPERVISION OF		
8/9/2019		
Date		

Reference Plans for
these Improvements

Date	Rv	REVISIONS	App'd

BENCH MARK
Scale

Engineering _____

Parks _____

Tom Koper 10/30/2019
 Acting Public Works Director
 City Engineer
 RCE No. 50258

CITY OF CORONA
LANDSCAPE MAINTENANCE DISTRICT
LANDSCAPE PLANS

PROJECT: LINCOLN PARK
PLAYGROUND IMPROVEMENTS
SHEET TITLE: HARDSCAPE
SURFACING

Drawing No.
LH-1
Sh 3 of 3

