

## DID YOU KNOW?

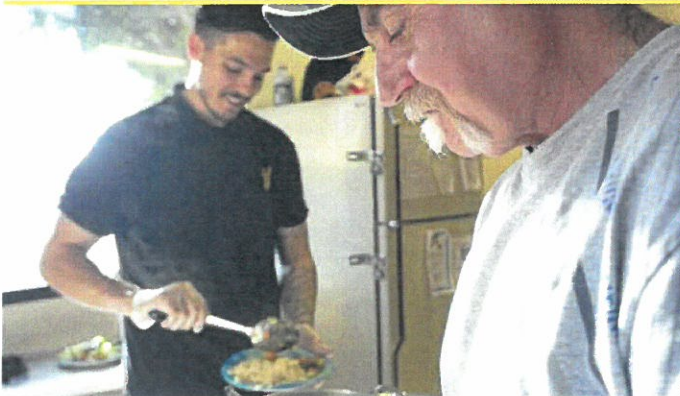
There are 64,478 homeless people living in Southern California (Point-In-Time Count, 2015). An average hospital stay in California is 4.6 days, but homeless patients generally stay twice as long. Each extra day at the hospital costs approximately \$3,000 per day. Homeless patients who are discharged to Recuperative Care experience 50% fewer hospital readmissions than patients who are discharged to their own care.

## WHAT WE DO

Since pioneering Illumination Foundation (IF) Recuperative Care in Orange County in 2008, the program has served more than 3,000 homeless individuals.

Hospitals face the challenge of discharging homeless patients who are too ill or injured to recover on the streets, but not ill enough to stay in the hospital. Recuperative Care ensures that patients have a safe environment and place to stay to properly recover and prevent a return to the emergency room.

Patients are provided interim housing with daily meals, integrated medical oversight, intensive case management, mental health counseling, and the opportunity to end their cycle of homelessness as they work towards a life of self-sufficiency.



**if**

**BREAKING THE CYCLE  
OF HOMELESSNESS**

**WWW.IFRECURP.ORG**  
**LA AND ORANGE COUNTY REFERRAL LINE — (888) 505-0855**  
**LA/OC FAX — (888) 382-9551**  
**INLAND EMPIRE REFERRAL LINE — (951) 708-6000**  
**IE FAX — (951) 801-5112**  
**EMAIL — RECUP@IFHOMELESS.ORG**

IF Main Office: 2691 Richter Ave., Suite 107, Irvine, CA 92606  
(949) 273-0555 | info@ifhomeless.org | www.ifhomeless.org  
All donations are tax deductible as allowed by law. 501(c)(3) ID#71-1047686



**if** ILLUMINATION FOUNDATION  
**RECUPERATIVE CARE**

**A SAFE DISCHARGE PLAN  
FOR THE HOMELESS PATIENT.**

Visit [www.ifrecup.org](http://www.ifrecup.org) or call our Referral Lines:  
Los Angeles & Orange County — (888) 505-0855  
Inland Empire — (951) 708-6000





## HOW THE PROGRAM WORKS

- 1 The hospital or agency refers a homeless patient to IF Recuperative Care.
- 2 The hospital or agency discharge planning team works with IF Recuperative Care referral team to determine needed length of stay for each patient.
- 3 Upon approval, the hospital transports the patient to the Recuperative Care facility.
- 4 The patient is assessed and connected to medical and supportive services to facilitate long-term stabilization making for a successful transition back into the community.

## WHAT HOSPITALS ARE SAYING ABOUT IF RECUPERATIVE CARE:

*"It's wonderful for our hospital to have this program available to our homeless patients. It's made a huge difference in how we approach discharge planning for the homeless, and it has certainly helped these patients stay healthier and lessen the need for readmission."*

— Clinical Social Worker | **St. Joseph Hospital**

*"These were some difficult patients that we referred to you, but you all stepped up and did all that you could to provide support, structure and assistance. Please let the staff know how much we appreciate their efforts and encourage them to consider that we not only measure their success by the outcomes, but also by their valiant efforts."*

— Social Worker | **Mission Hospital**



## Recuperative Care Client Story

Stewart faced many obstacles as he lost his housing and struggled to keep up his health and his job. Eventually, his deteriorating health would prevent him from working. With the help of Recuperative Care staff, Stewart was able to properly heal, obtain a housing subsidy, and move into his own apartment to begin his life again. **"The scariest thing is – what happened to me could happen to anyone, but I'm grateful to you all for helping me get back on my feet."**

## A MUTUALLY BENEFICIAL RELATIONSHIP

### BENEFITS FOR YOUR PATIENT

IF Recuperative Care focuses on client-centered services with the priority of having a safe and supportive environment for each patient's recovery.

All patients receive medical coordination to appropriate primary care and specialists as needed, and intensive case management for crucial social services.

Other benefits include daily meals, connections to mental health services, financial literacy training, health education, job readiness training, and skills for community re-engagement.

### BENEFITS FOR YOUR AGENCY

The novelty in IF's Recuperative Care lies in a safe discharge plan combined with cost savings. Our program lowers the daily cost of care by 90% with a tiered pricing structure.

Agencies can refer patients 7 days a week through an easy process. Additionally, direct communication with the service provider allows improved care coordination between agencies and IF Recuperative Care staff.

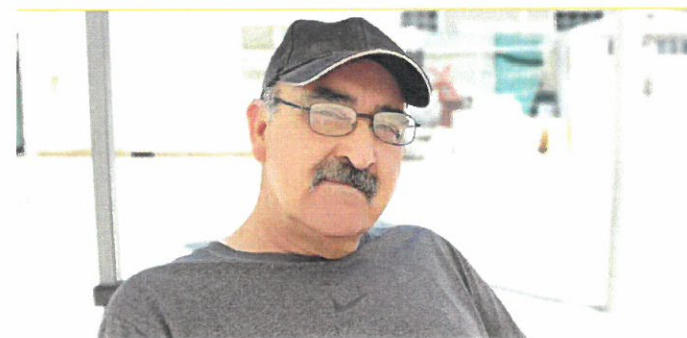
Recuperative Care reduces readmissions to the hospital of homeless patients by 50%. This is possible through continuous advocacy for patients with connections to medical and social services.



#### To All Persons of the Illumination Foundation:

*"I want to thank everyone at the Illumination Foundation for being very kind and supportive. The staff is very hard-working and I want to thank you all for what you've done. This was a very difficult time for me and I was appreciative for all that you have been able to do. To be able to go into a facility and receive such kindness during this difficult time meant the world to me. Thank you very much."*

— Lyn S. | **Former Patient & Success Story**





## THE FACTS



Estimated homeless population  
in LA & Orange counties

**\$6.7 Million**

in hospital dumping fines  
since 2007 for **12** hospitals  
in LA County



Estimated cost of  
**1.5 days in  
the hospital**

APPROXIMATELY EQUALS



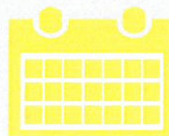
**152**  
LA & OC  
hospitals



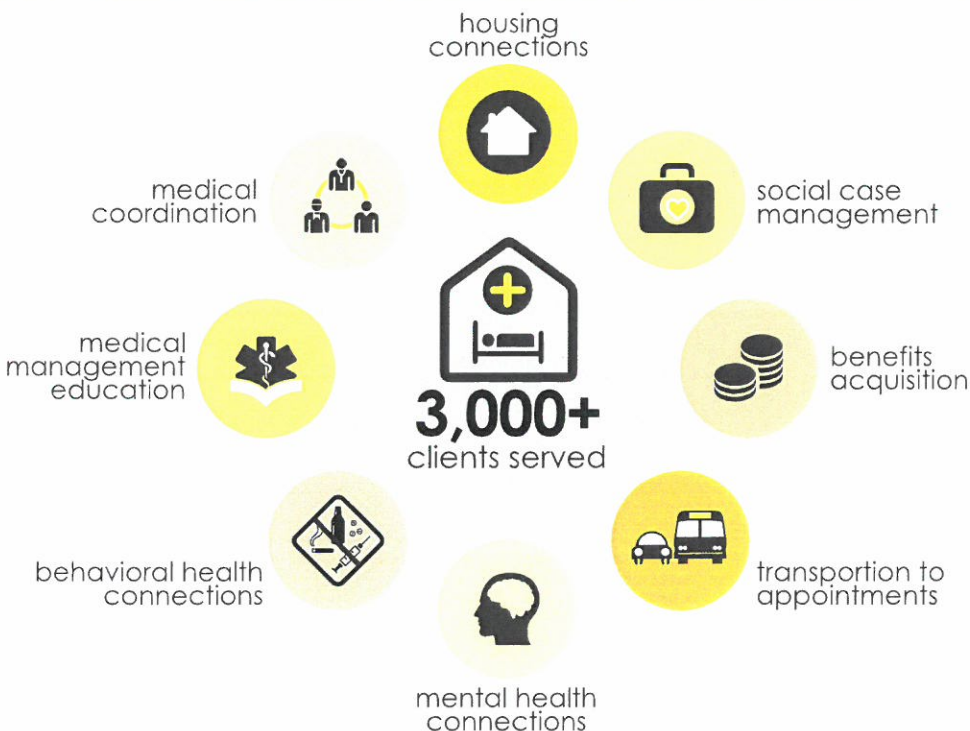
**40%**

have used  
Recuperative Care  
at least once

Cost for  
**1 month**  
of Recuperative Care



## THE BENEFITS



**33%**

Connected to  
transitional or  
permanent  
housing  
(Jan 2015 - June 2015)



**\$19.0M**  
in Cost Savings



Improved medical  
outcomes  
**50%**  
Reduced Recidivism

## THE PROGRAM



**Hospital Refers  
No walk-ins**



EMTALA Compliant  
Acute Recovery  
Medical Stabilization  
Mental Health Management

### CRITERIA

- ✓ Homeless
- ✓ Independent
- ✓ AOx4

**LOCATION:** RIVERSIDE, CA

**WHY AM I GOING TO RECUPERATIVE CARE?**

The goal of recuperative care is to provide a safe, clean place for you to rest and recover while you get connected to medical and social services

**HOW LONG WILL I BE THERE?**

Your length of stay will be determined by the hospital or facility/ or insurance plan, as it is based on your medical condition and at times social service needs.

**HOW MUCH WILL IT COST ME?**

You will not be charged for your stay in our program so that you can focus on your recovery and your exit destination at the end of your stay

**WHAT CAN I EXPECT?**

- A clean, safe, supportive dormitory setting. We have female and male dorm areas, designated smoking area, Dining/lounge area with 24 hour staff for your essential needs.
- Breakfast, Lunch and Dinner
- On site nurses will help you follow a medical plan of care, including morning and evening wellness checks, and medication reminders when needed (pill organizers will be provided).
- On site Case Managers will help you get connected to social services and to identify possible housing opportunities
- Support & transportation to attend your follow-up social, medical and mental health appointments that may be provided by staff, or with bus passes for transport.

**WHAT DO WE EXPECT FROM YOU, WHILE IN THE PROGRAM?**

- To follow our compliancy contract, in order to reach the optimal results in your current situation.
- To take charge and fully participate in your own care plan, in order to be the most independent, and able continue improving your medical and social service needs.

**Please note:** We are not open to the public. All of our clients are homeless, recovering from a medical event and have been sent here directly from a contracted hospital/facility or insurance plan.