

EXHIBIT B

PROPERTY TO BE GRANTED BY THE CITY TO THE DEVELOPER



INDICATES AREA BEING DESCRIBED
AREA: 32,849 S.F. (0.75 AC)

SEE DETAIL ON
SHEET 2.

S48°21'48"W
RAD
 $\Delta=02°06'24"$
 $R=970.00'$
 $L=35.67'$

S46°15'24"W
RAD

SW'LY LINE OF LLA98-10
INST. NO. 389326, REC.
9/14/98

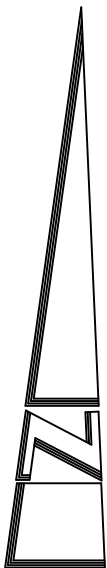
RADIO ROAD
(PARKRIDGE ROAD)
N44°44'47"E 329.11'

SW'LY LINE OF DEED
REC. 4/29/64 AS INST.
NO. 52724 O.R.

N53°54'31"W
24.73'

POB

40.24'
S33°41'48"W



SCALE: 1"=80'



LAND
DEVELOPMENT
DESIGN
COMPANY

2313 E. Philadelphia St., Ste. F
ONTARIO, CA 91761
(909) 930-1466
FAX (909) 930-1468

PLANNING • CIVIL • SURVEYING

| DATE: | SCALE: | SHEET: | JOB NO. | |
|---------|--------|--------|---------|-------------|
| 3/24/20 | 1"=50' | 1 OF 2 | 5878 | EXHIBIT "B" |

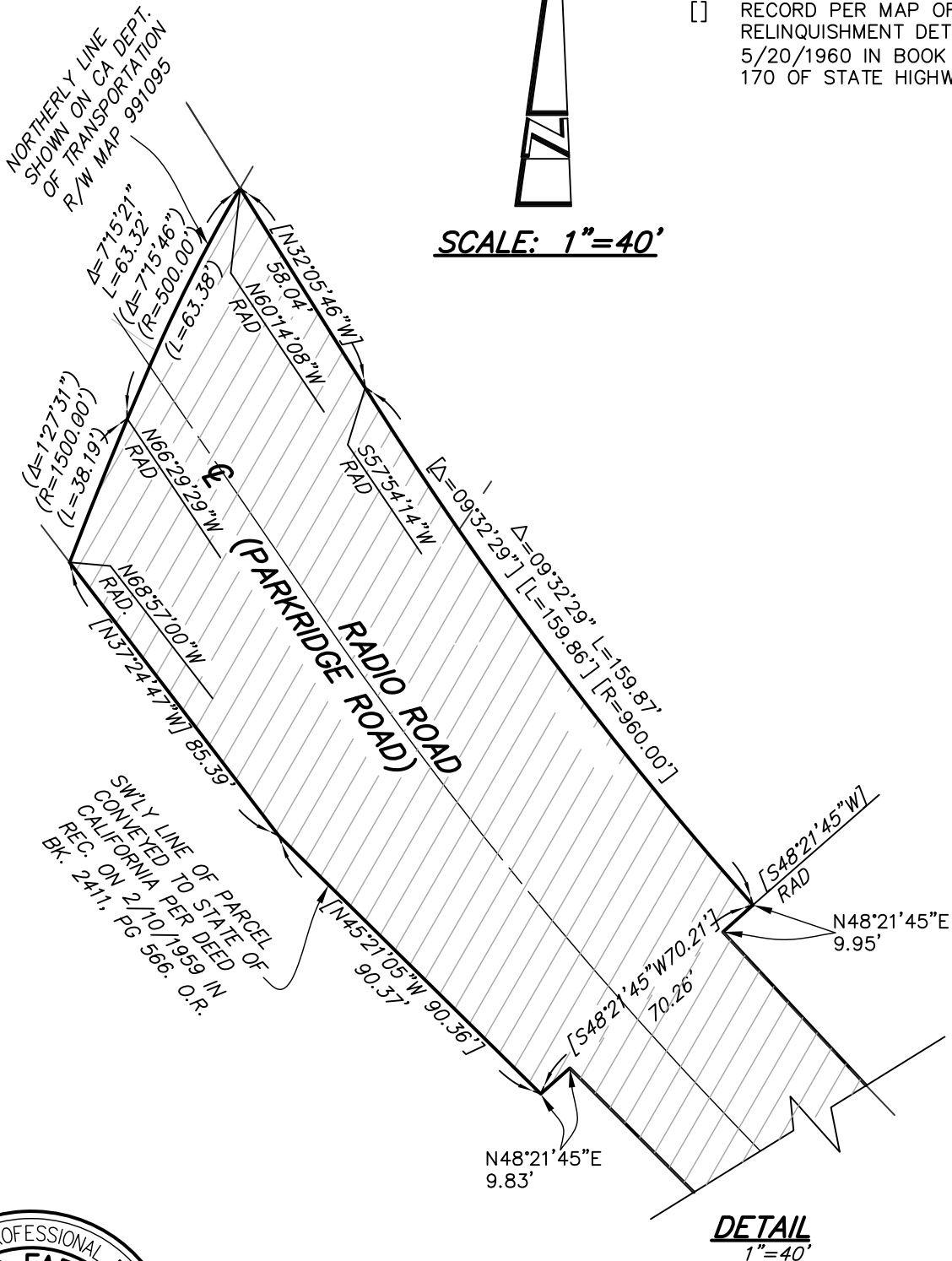
EXHIBIT 'B'

LEGEND

- () RECORD DATA PER CALIFORNIA DEPT. OF TRANS. R/W MAP 991095
- [] RECORD PER MAP OF RELINQUISHMENT DETAIL #4 RE. 5/20/1960 IN BOOK 2. PAGE 170 OF STATE HIGHWAY MAP.



SCALE: 1"=40'



DETAIL
1"=40'



**LAND
DEVELOPMENT
DESIGN
COMPANY**

2313 E. Philadelphia St., Ste. F
ONTARIO, CA 91761
(909) 930-1466
FAX (909) 930-1468

PLANNING • CIVIL • SURVEYING

| DATE: | SCALE: | SHEET: | JOB NO. | |
|---------|----------|--------|---------|-------------|
| 3/24/20 | AS NOTED | 2 OF 2 | 5878 | EXHIBIT "B" |