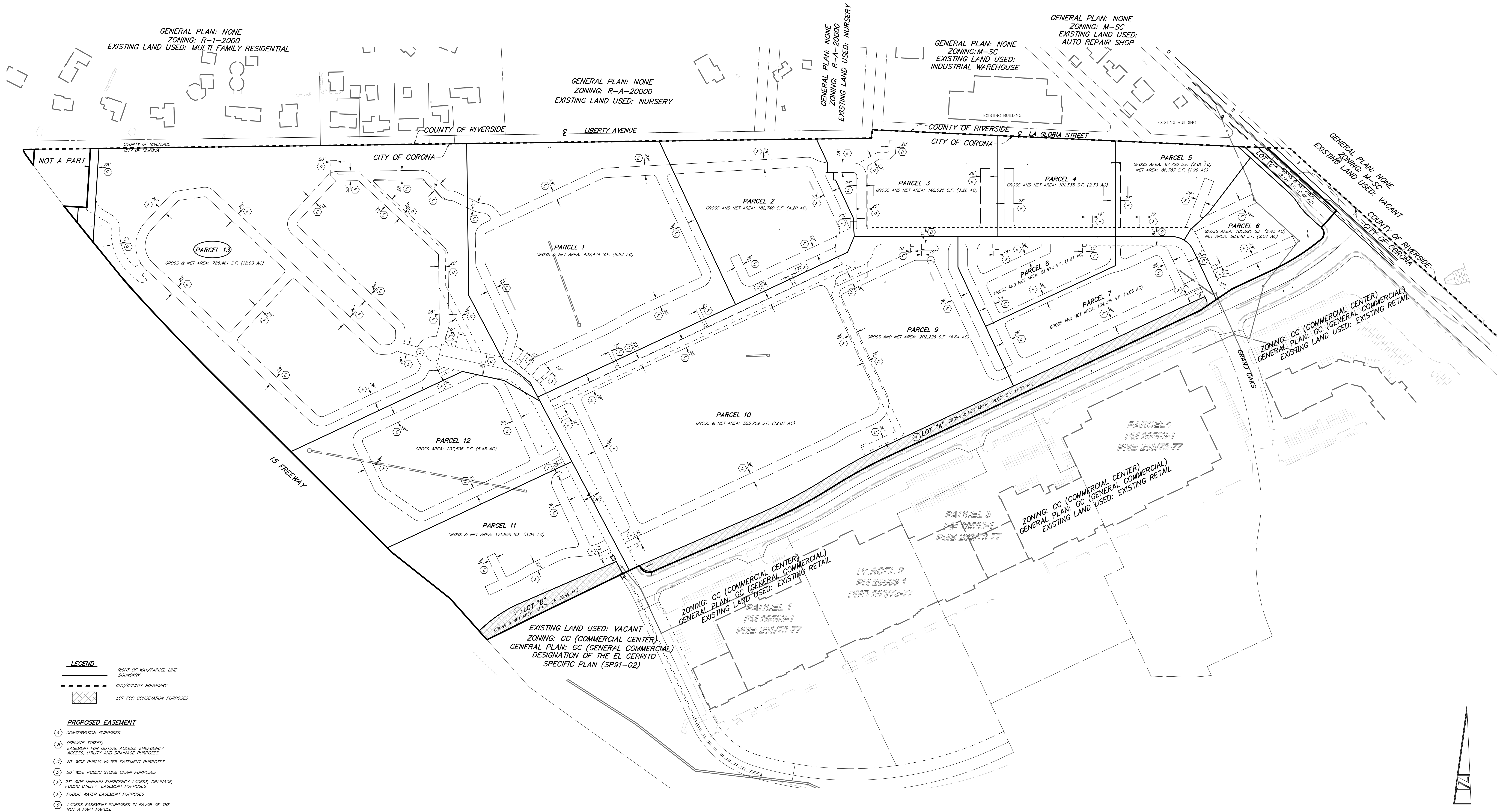






PROPOSED EASEMENTS



LEGEND

RIGHT OF WAY/PARCEL LINE
BOUNDARY

CITY/COUNTY BOUNDARY

LOT FOR CONSERVATION PURPOSES

PROPOSED EASEMENT

(A) CONSERVATION PURPOSES

(B) PRIVATE STREET

(C) EASEMENT FOR MUTUAL ACCESS, EMERGENCY ACCESS, UTILITY AND DRAINAGE PURPOSES

(D) 20' WIDE PUBLIC WATER EASEMENT PURPOSES

(E) 20' WIDE PUBLIC STORM DRAIN PURPOSES

(F) 20' WIDE MINIMUM EMERGENCY ACCESS, DRAINAGE, PUBLIC UTILITY EASEMENT PURPOSES

(G) PUBLIC WATER EASEMENT PURPOSES

(H) ACCESS EASEMENT PURPOSES IN FAVOR OF THE NOT A PART PARCEL

100 0 100 200 300
SCALE: 1"=100'

DIGALERT
DIAL TOLL FREE
811
AT LEAST TWO DAYS
BEFORE YOU DIG
UNDERGROUND SERVICE ALERT OF SOUTHERN CALIFORNIA



BENCHMARK

REVISIONS:

1. REVISED PER DPR	2/11/19
2. REVISED PER DPR	5/5/19
3. REVISED PER DPR	6/20/19
4. REVISED PER DPR	9/17/19

DATE: 9/19/19
PREPARED UNDER THE SUPERVISION OF:
Dennis C. Farnsworth
P.E. No. 31653, Lic. Exp. 12/31/2020
APPROVED BY:

DPR2018-0015 AND DPR 2018-0016

PARCEL MAP 37608
FOR CONDOMINIUM PURPOSES

SITE
TOM BARNES STREET
CORONA, CALIFORNIA

PREPARED FOR:
ARCCO DEVELOPMENT
2518 NORTH SANTIAGO BLVD.
ORANGE, CA 92667

DATE: 9/19/19
JOB NO. 3657
DRAWN BY: VAP
SCALE: 1"=80'
DESIGNED BY: KJR
SHEET J
CHECKED BY: KJR
OF 3 SHEETS

2313 E. Philadelphia St., Ste. F
Ontario, CA 91761
(909) 930-1466
FAX (909) 930-1468
PLANNING
CIVIL
SURVEYING
COMPANY, LLC