

Project Location



Parcel Map 37588





WASTE

SEWE
— POWL
GAS.

PHON

CABL

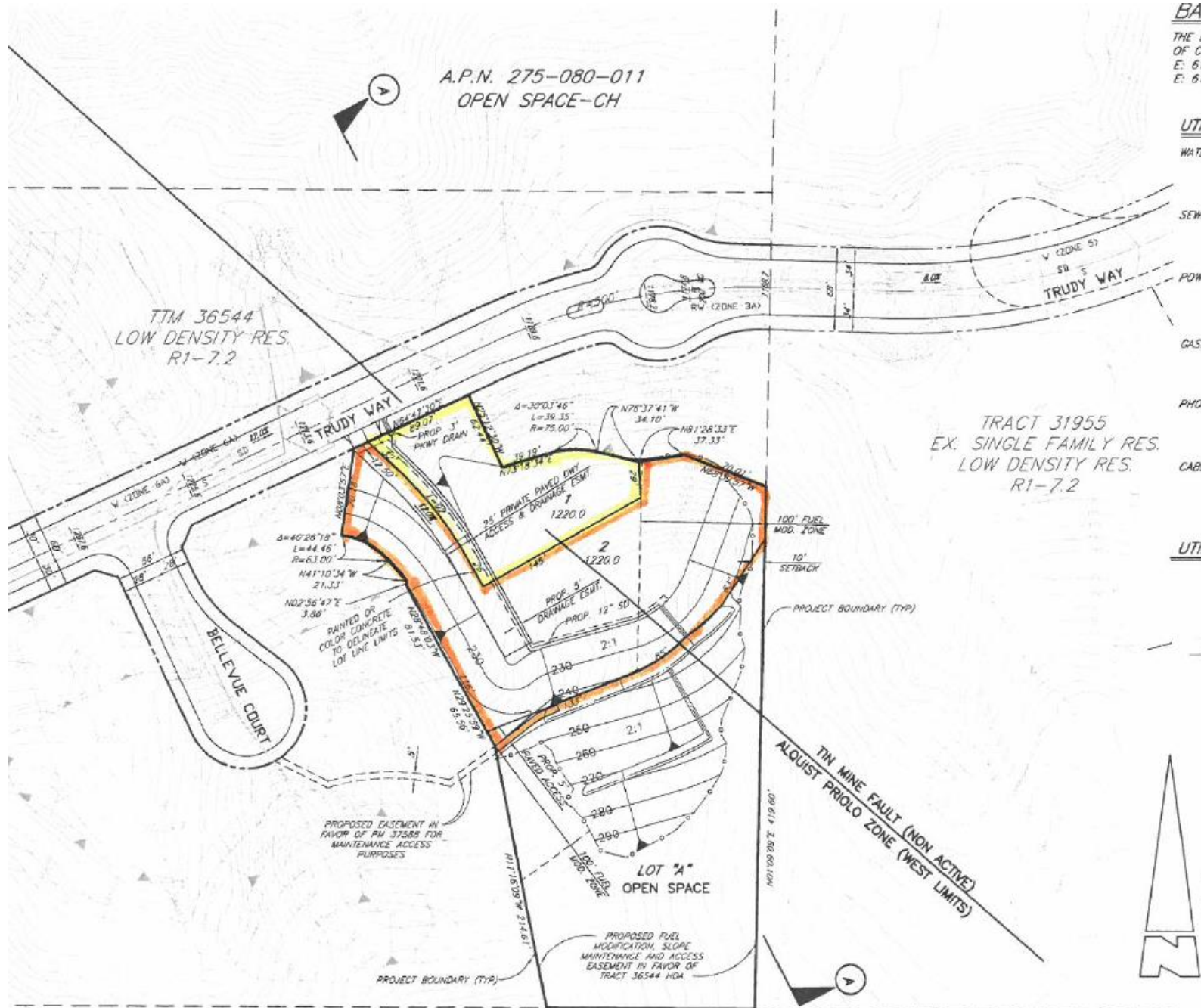
- 1) USEABLE AREA IS DEFINED ARE AREA OF PAD AND EXCLUDES EXCLUDES SLOPE & DRIVEWAY ACCESS.
- 2) LOT DEPTH EXCLUDES 25' PRIVATE PAVED DRIVEWAY.

2) LOT DEPTH EXCLUDES 25' PRIVATE PAVED DRIVEWAY.

UTIL

A

LETTERED LOTS ARE TO BE MAINTAINED
BY H.O.A. UNLESS OTHERWISE
ACCOUNTED FOR.



Project Location

- Part of TTM 36544 (Skyline Heights)
- 270.9 acres total
- 292 dwelling units approved
- EIR certified February 1, 2017
- Project Site zoned R-1-7.2

