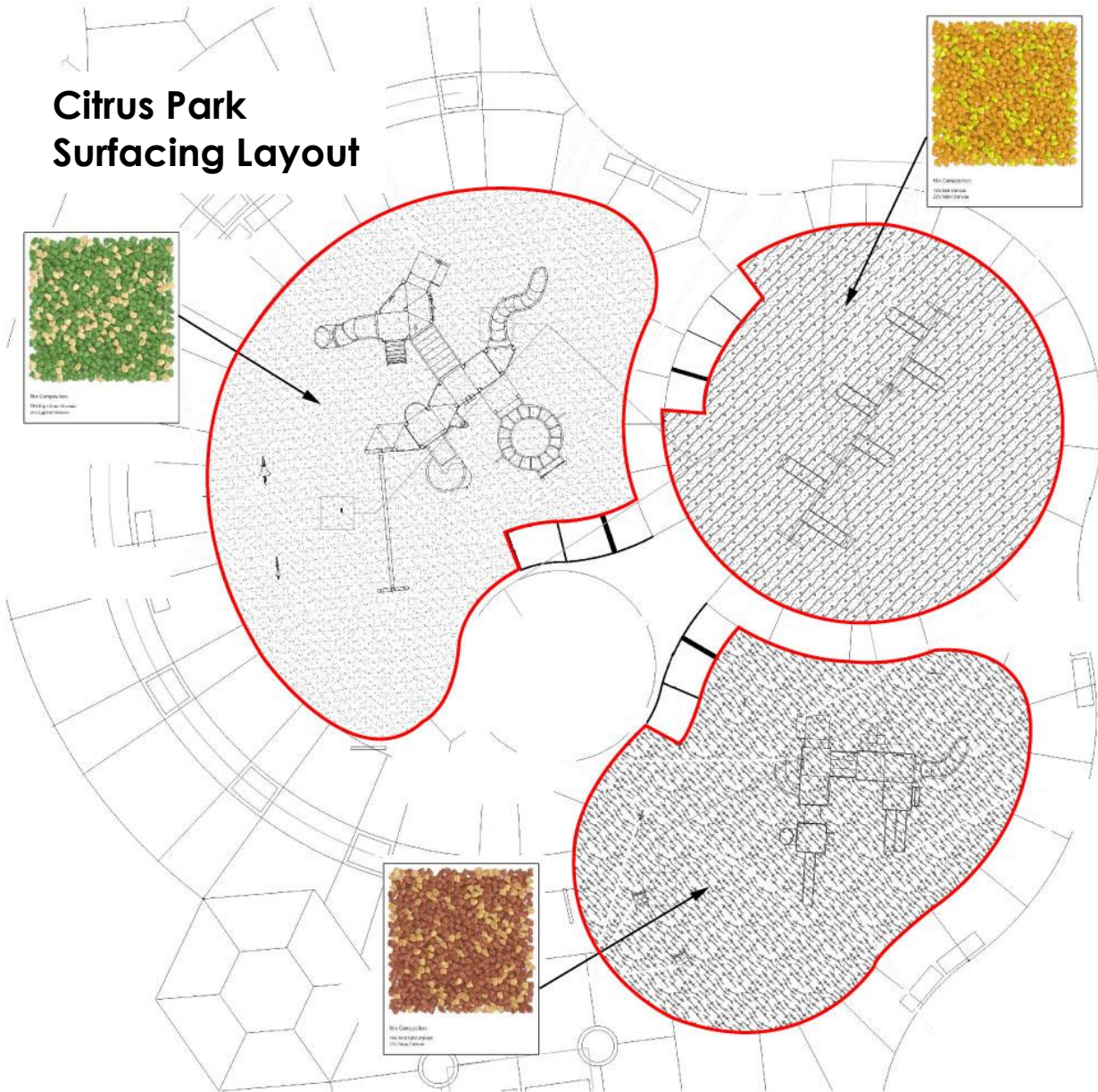


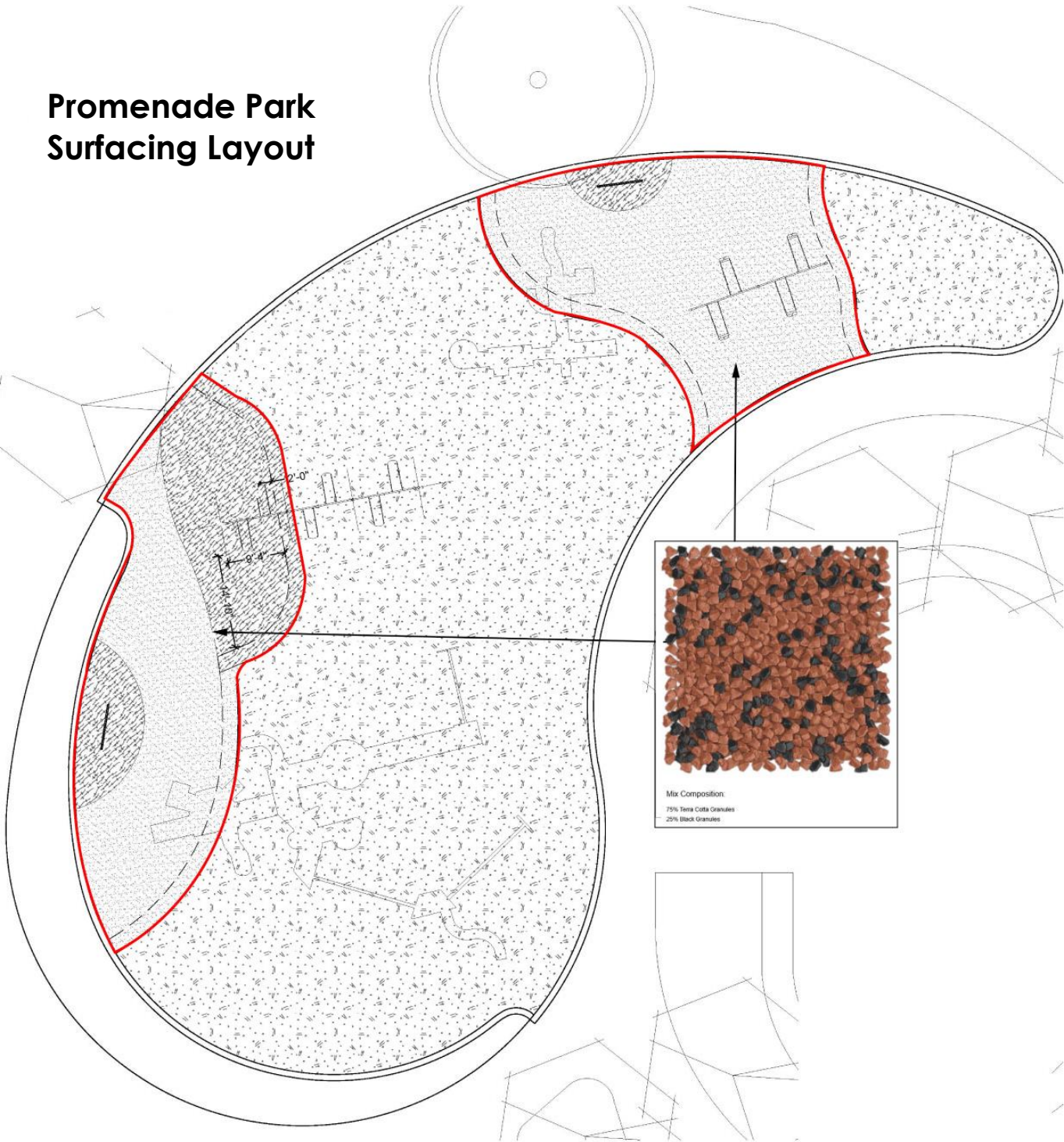
EXHIBIT A SURFACING LAYOUTS

Citrus Park Surfacing Layout





Promenade Park
Surfacing Layout



Victoria Park
Surfacing Layout

The drawing consists of two views of a playground area, likely a sandpit or a specific play structure base, with dimensions in feet and inches. The top view is a plan view showing a rectangular area with a red outline. Dimensions include 9'-8" on the left, 5'-0" on the top, 3'-0" on the right, and 3'-8" on the bottom. A red outline highlights a specific area within the plan. The bottom view is a side elevation showing a sloped area with a red outline. Dimensions include 5'-0" on the left, 5'-0" on the right, 5'-0" on the bottom, and 9'-8" on the top. A red outline highlights a specific area within the elevation. A central rectangular area is shaded with a stippled pattern. A legend box in the center shows a cross-section of the surfacing material, which is a mix of red and black granules. A line connects the legend box to the shaded area in both views.

